



Count on it.

Operator's Manual

Trencher Drive

Pro Sneak 360 and 365 Vibratory Plow

Model No. 25410—Serial No. 313000001 and Up

Model No. 25410E—Serial No. 313000001 and Up

Model No. 25411—Serial No. 314000001 and Up

Model No. 25411E—Serial No. 314000001 and Up



⚠ WARNING

CALIFORNIA Proposition 65 Warning

This product contains a chemical or chemicals known to the State of California to cause cancer, birth defects, or reproductive harm.

⚠ DANGER

There may be buried power, gas, and/or telephone lines in the work area. A shock or an explosion may occur if you dig into them.

Have the property or work area marked for buried lines and do not dig in marked areas. Contact your local marking service or utility company to have the property marked (for example, in the United States, call 811 for the nationwide marking service).

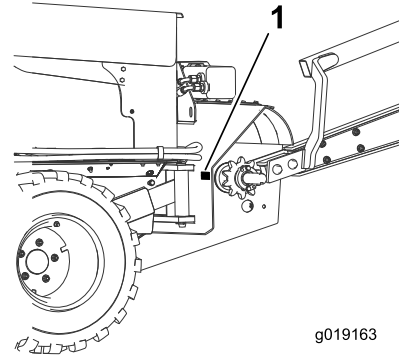
Introduction

The trencher heads are attachments designed for use on Toro compact utility machines with a variety of booms and chains to dig trenches in soil to facilitate the burying of cabling and piping. They are not intended for use in cutting hard materials such as wood or concrete.

Read this information carefully to learn how to operate and maintain your product properly and to avoid injury and product damage. You are responsible for operating the product properly and safely.

You may contact Toro directly at www.Toro.com for product and accessory information, help finding a dealer, or to register your product.

Whenever you need service, genuine Toro parts, or additional information, contact an Authorized Service Dealer or Toro Customer Service and have the model and serial numbers of your product ready. [Figure 1](#) identifies the location of the model and serial numbers on the product. Write the numbers in the space provided.



g019163

Figure 1

1. Model and serial number location

Model No. _____

Serial No. _____

This manual identifies potential hazards and has safety messages identified by the safety alert symbol ([Figure 2](#)), which signals a hazard that may cause serious injury or death if you do not follow the recommended precautions.



Figure 2

1. Safety alert symbol

This manual uses 2 words to highlight information.

Important calls attention to special mechanical information and **Note** emphasizes general information worthy of special attention.

Contents

Safety	3
Safety and Instructional Decals	4
Setup	6
1 Installing the Trencher	6
2 Installing the Control Valve	6
3 Installing the Trencher Lever and Valve	7
4 Installing the Hydraulic Hoses	10
5 Installing the Boom and Digging Chain (Sold separately)	14
6 Installing the Safety Bar	15
7 Testing the Installation.....	16
Product Overview	17
Specifications	17
Attachments/Accessories.....	17
Operation	18
Selecting the Proper Components for the Trencher.....	18
Digging a Trench.....	19
Operating Tips	20
Maintenance	21
Recommended Maintenance Schedule(s)	21
Greasing the Trencher.....	21
Servicing the Trencher Digging Chain	22
Checking and Adjusting the Sensor Switch (ProSneak 360 only)	23
Adjusting the Trencher Drive Chain	23
Storage	24
Troubleshooting	25

Safety

Improper use or maintenance by the operator or owner can result in injury. To reduce the potential for injury, comply with these safety instructions and those in the machine *Operator's Manual*. Always pay attention to the safety alert symbol, which means *Caution, Warning, or Danger*—personal safety instruction. Failure to comply with the instruction may result in personal injury or death.

⚠ DANGER

The moving teeth and auger will severely cut hands, feet, or other body parts.

- Keep hands, feet, and any other part of your body or clothing away from moving teeth, auger, or other parts.
- Before adjusting, cleaning, repairing, or inspecting the trencher, lower the trencher to the ground, stop the engine, wait for all moving parts to stop, and remove the key.

⚠ WARNING

When the engine is off, attachments in the raised position can gradually lower. Someone nearby may be pinned or injured by the attachment as it lowers.

Always lower the attachment lift each time you shut off the machine.

⚠ WARNING

Lightning can cause severe injury or death. If lightning is seen or thunder is heard in the area, do not operate the machine; seek shelter.

⚠ CAUTION

Hydraulic couplers, hydraulic lines/valves, and hydraulic fluid may be hot and can burn you if you touch them.

- Wear gloves when operating the hydraulic couplers.
- Allow the machine to cool before touching hydraulic components.
- Do not touch hydraulic fluid spills.
- Keep your body and hands away from pin hole leaks or nozzles that eject high pressure hydraulic fluid.
- Use cardboard or paper to find hydraulic leaks, never use your hands.

Safety and Instructional Decals



Safety decals and instructions are easily visible to the operator and are located near any area of potential danger. Replace any decal that is damaged or lost.

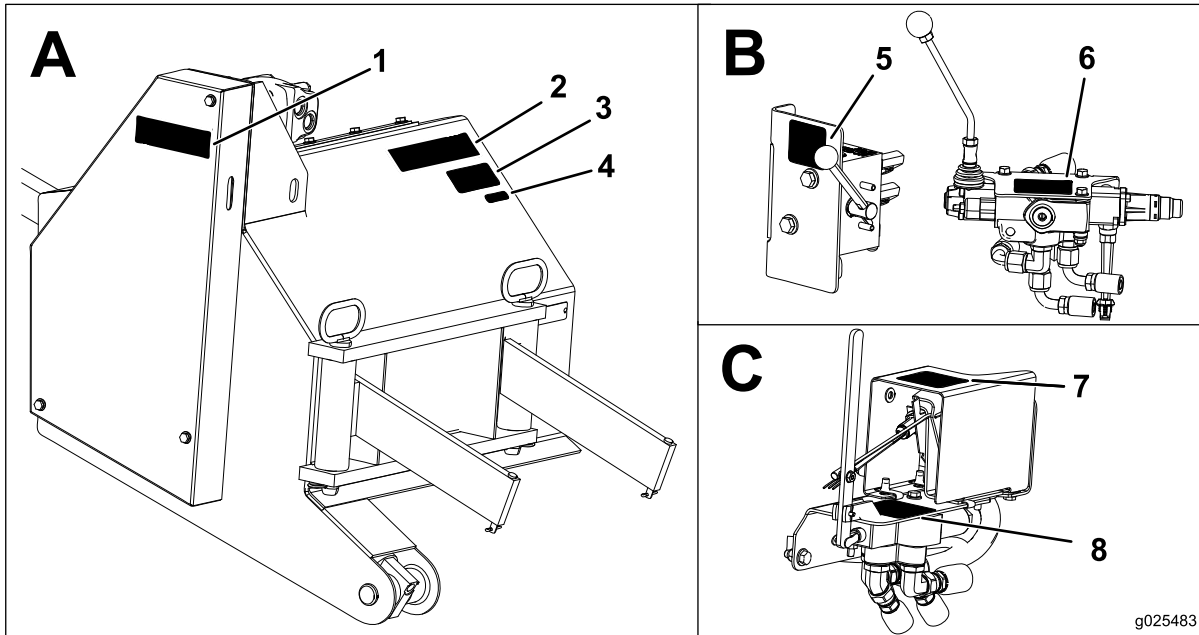
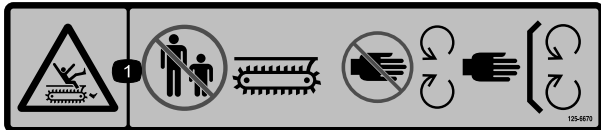


Figure 3

- | | | |
|-------------------|--|--|
| 1. Decal 125-6686 | 4. Decal 125-8175 | 7. Decal 125-6676 (Pro Sneak 360 only) |
| 2. Decal 125-6670 | 5. Decal 127-1826 (Pro Sneak 365 only) | 8. Decal 125-6678 (Pro Sneak 360 only) |
| 3. Decal 125-6671 | 6. Decal 125-6678 (Pro Sneak 365 only) | |



125-6670

1. Cutting/dismemberment hazard, trencher—keep bystanders away from the trencher; keep away from moving parts; keep all guards and safeties in place.



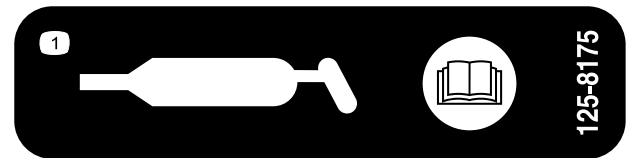
125-6686

1. Cutting/dismemberment hazard of hand, trencher—keep away from moving parts; keep all guards and safeties in place.



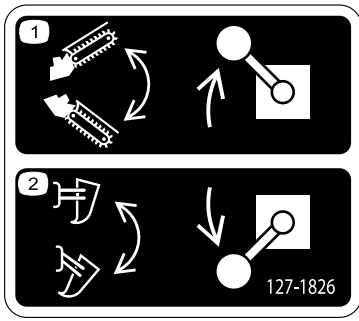
125-6671

1. Explosion hazard; electric shock hazard—call local utilities before digging.



125-8175

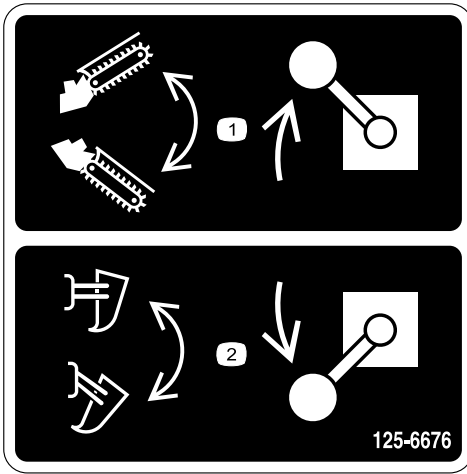
1. Read the *Operator's Manual* for information on greasing the machine.



127-1826

Model 25411

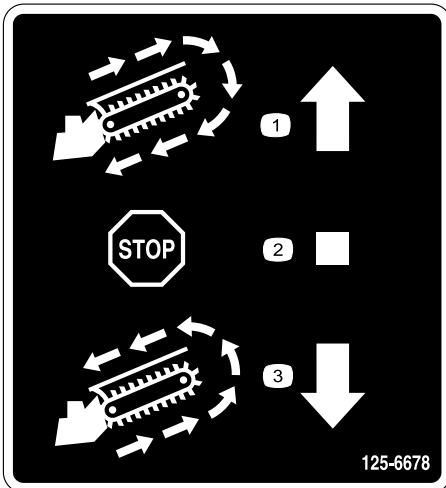
1. Move the lever up to control the trencher.
2. Move the lever down to control the plow.



125-6676

Model 25410 only

1. Raise/lower the trencher.
2. Raise/lower the plow.



125-6678

1. Turn the trencher chain clockwise.
2. Stop the trencher.
3. Turn the trencher chain counterclockwise.

Setup

1

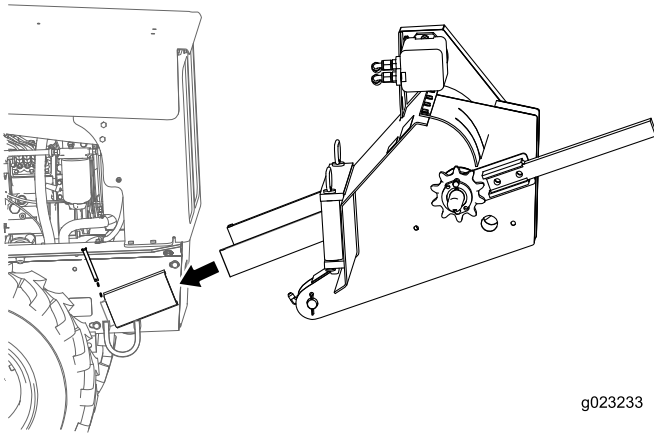
Installing the Trencher

Parts needed for this procedure:

1	Trencher assembly
2	Clevis pin

Procedure

Slide the trencher assembly into the slots on the machine and secure with a clevis pin on each side (Figure 4).



g023233

Figure 4

2

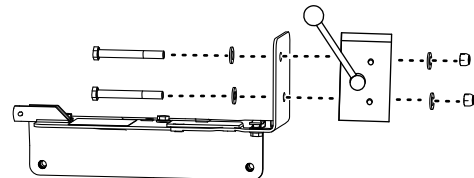
Installing the Control Valve

Parts needed for this procedure:

4	Bolt (3/8 x 3-1/4 inch)
8	Washer (3/8 inch)
4	Nut (3/8 inch)
1	Pro Sneak 360 control valve
1	Pro Sneak 365 control valve
1	Pro Sneak 360 control-valve bracket
1	Pro Sneak 365 control-valve bracket
8	90-degree short drop adaptor
4	90-degree long drop adaptor

Installing the Selector Valve on the Pro Sneak 360

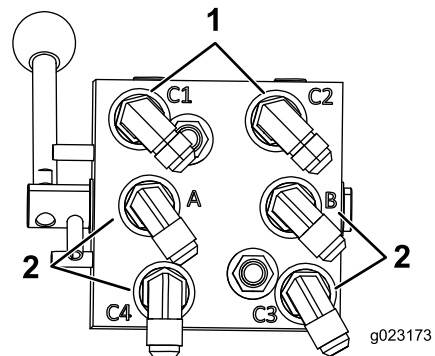
1. Insert 2 bolts and 2 washers inside the trencher switch bracket and through the selector valve and secure the valve using 2 washers and 2 nuts (Figure 5); torque the fasteners to 51 to 65 N-m (38 to 48 ft-lb).



g023174

Figure 5

2. Install the fittings and adaptors as shown in Figure 6; torque the fittings on the port side to 36 to 44 N-m (27 to 33 ft-lb).



g023173

Figure 6

1. 90-degree long drop adaptor
2. 90-degree short drop adaptor

Installing the Control Valve on the Pro Sneak 365

1. Attach the bracket to the valve (Figure 7).

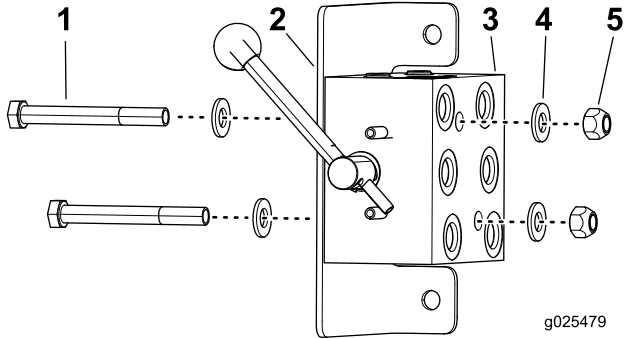


Figure 7

- | | |
|------------|------------|
| 1. Bolts | 4. Washers |
| 2. Bracket | 5. Nuts |
| 3. Valve | |

2. Attach the valve fittings to the valve as shown in Figure 8.

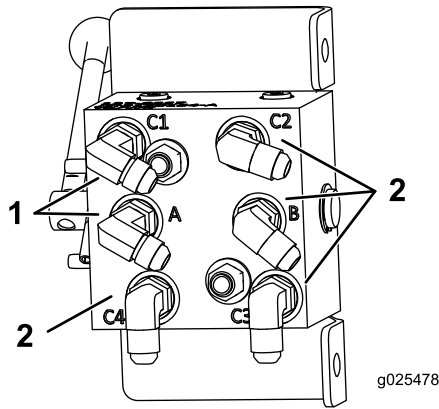


Figure 8

- | | |
|--------------------------------|---------------------------------|
| 1. 90-degree long drop adapter | 2. 90-degree short drop adapter |
|--------------------------------|---------------------------------|

3. Torque the fittings on the port side to 36 to 44 N-m (27 to 33 ft-lb).
4. Remove the panel from the machine as shown in Figure 9.

Note: Do not remove the hoses attached to the side panel.
Set the bolts aside.

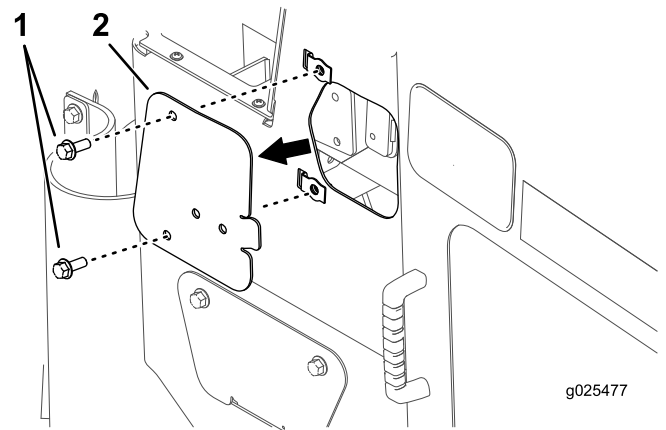


Figure 9

- | | |
|----------|----------|
| 1. Bolts | 2. Panel |
|----------|----------|

5. Attach the bracket to the machine using the bolts previously removed from the panel (Figure 10).

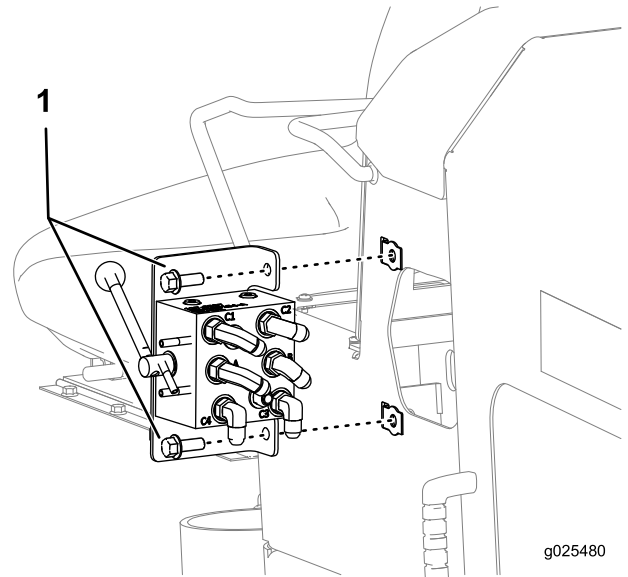


Figure 10

- | |
|--|
| 1. Bolts previously removed from panel |
|--|

3

Installing the Trencher Lever and Valve

Parts needed for this procedure:

2	Nut (3/8 inch / Pro Sneak 360)
2	Switch assembly (Pro Sneak 360)
1	Cover (Pro Sneak 360)
1	Pro Sneak 360 valve bracket
1	Link assembly (Pro Sneak 360)
1	Bolt (5/16 x 2-1/4 inches / Pro Sneak 360)
2	Bolt (3/8 inch / Pro Sneak 360)
5	Bolt (5/16 x 1 inch / Pro Sneak 360)
1	Bolt (5/16 x 2-1/2 inches / Pro Sneak 360)
8	Washer (5/16 inch / Pro Sneak 360)
4	Washer (3/8 inch / Pro Sneak 360)
1	Cotter pin (Pro Sneak 360)
1	Nut (Pro Sneak 360)
2	Locknut (Pro Sneak 360)
1	Valve lever (Pro Sneak 360)
1	Rod switch (Pro Sneak 360)
5	U-Nut (5/16 inch / Pro Sneak 360)
1	Clevis pin (Pro Sneak 360)
1	Ball joint (Pro Sneak 360)
1	Pro Sneak 360 Valve
4	90-degree elbow fitting
3	45-degree elbow fitting
1	Pro Sneak 365 valve
1	Pro Sneak 365 bracket
1	Pro Sneak 365 switch
3	Bolts (5/16 x 1-1/4 inch / Pro Sneak 365)
3	Nuts (5/16 x 1-1/4 inch / Pro Sneak 365)
1	Handle assembly (Pro Sneak 365)
1	Long straight fitting (Pro Sneak 365)
2	Short straight fitting (Pro Sneak 365)

Installing the Trencher Switch and Valve Assembly on the Pro Sneak 360

1. Install the fittings as shown in [Figure 11](#).
2. Torque the fittings on the port side to 104 to 127 N-m (77 to 94 ft-lb).

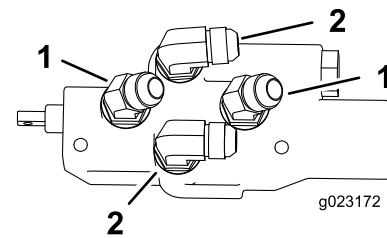


Figure 11

1. 45-degree elbow fitting
2. 90-degree elbow fitting

3. Secure the valve to the bracket using 2 bolts (5/16 x 2-1/4 and 5/16 x 2-1/2 inch), 2 washers (5/16 inch), and 2 locknuts ([Figure 12](#)).

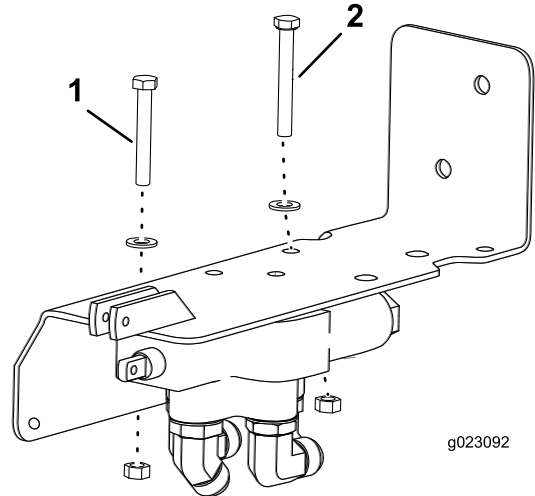


Figure 12

1. Bolt (5/16 x 2-1/4 inch)
2. Bolt (5/16 x 2-1/2 inch)

4. Torque the fasteners to 31 to 37 N-m (270 to 330 in-lb).
5. Place the lever in between the guides on the bracket and secure with the clevis and cotter pin.
6. Secure the lever to the valve using the link assembly on the bottom hole of the lever ([Figure 13](#)).

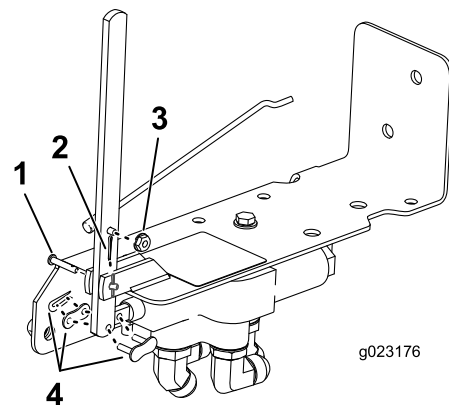


Figure 13

1. Clevis pin
2. Cotter pin
3. Nut
4. Link assembly

- Attach the ball joint and switch rod on the top hole of the lever.

Note: Assemble the rod so that the switch assembly is centered between the Forward and Reverse positions. Add thread locking adhesive to the nut and tighten onto the rod assembly (Figure 13).

- Secure the switch assembly to the bracket using the 2 bolts (5/16 inch), 2 washers (5/16 inch), and 2 U-nuts (5/16 inch) (Figure 14).

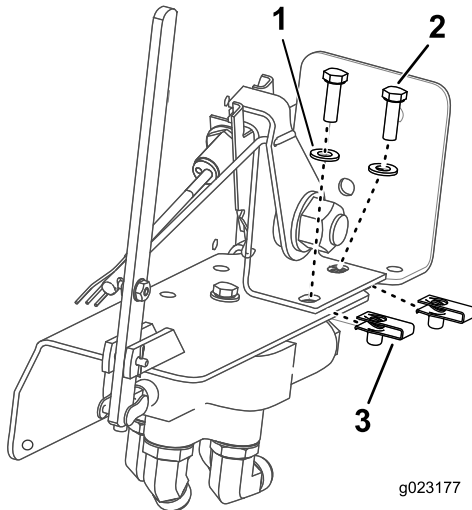


Figure 14

- Washer
- Bolt
- U-nut

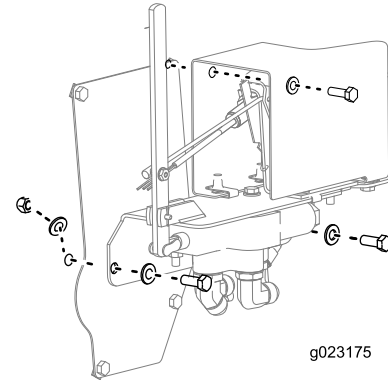


Figure 16

- Torque the fasteners to 19 to 25 N-m (175 to 225 in-lb).
- Place the U-nuts onto the cover and place the cover onto the assembly as shown in Figure 15; Box A.

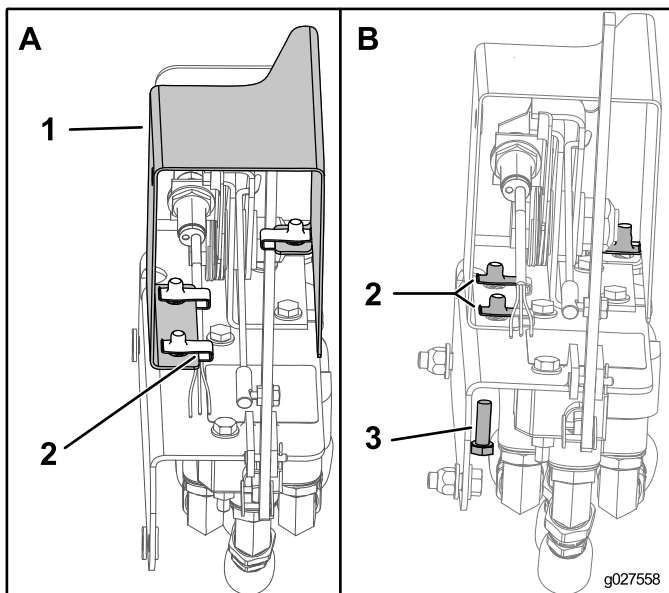


Figure 15

- Cover
- U-nuts
- Bolts (5/16 inch)

- Secure the cover to the assembly with the 3 bolts (5/16 inch) as shown in Figure 15; box B.
- Torque the fasteners to 19 to 25 N-m (175 to 225 in-lb).
- Remove the nut and bolt on the top right of the access panel on the machine (Figure 16).

Note: Use the bolt and washer to secure the cover of the assembly to the machine.

- Insert 2 bolts (3/8 inch) and 2 washers (3/8 inch) through the assembly and secure with 2 washers (3/8 inch) and 2 nuts (3/8 inch) on the inside of the machine panel (Figure 16).
- Torque the fasteners to 37 to 45 N-m (27 to 33 ft-lb).
- Locate the single wire loop on the wiring harness located in the machine near the side panel that was just removed.
- Connect the single wire loop to the sensor switch.

Note: Do not operate the machine without the sensor switch attached.

Installing the Trencher Switch and Valve Assembly on the Pro Sneak 365

1. Attach the bracket to the valve and attach the handle assembly as shown in [Figure 17](#).

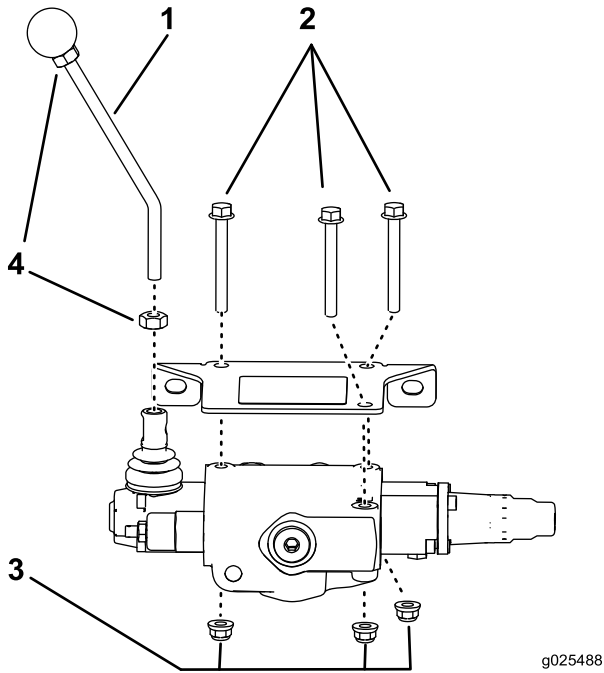


Figure 17

- | | |
|-------------------------|------------------------|
| 1. Handle assembly | 3. Nuts (5/16 x 1-1/4) |
| 2. Bolts (5/16 x 1-1/4) | 4. Hex nut |

2. Attach the valve fittings to the valve ([Figure 18](#)).

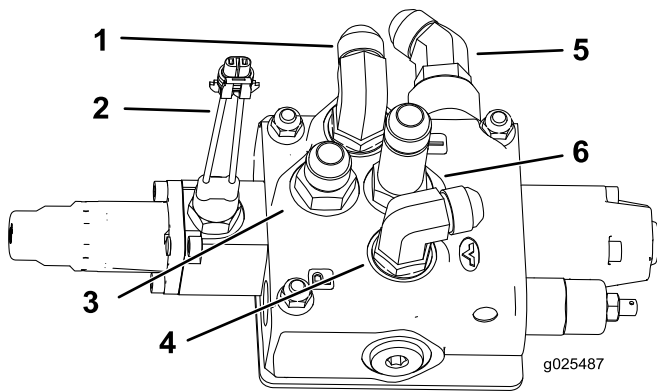


Figure 18

- | | |
|---------------------------|--------------------------|
| 1. 90-degree fitting | 4. 90-degree fitting |
| 2. Sensor switch | 5. 45-degree fitting |
| 3. Short straight fitting | 6. Long straight fitting |

3. Torque the fittings on the port side to 104 to 127 N-m (77 to 94 ft-lb).

4. Remove the panel from the machine as shown in [Figure 19](#).

Note: Use the bolts to attach the valve assembly and bracket to the machine.

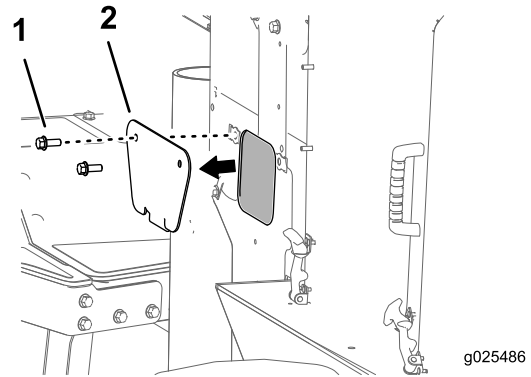


Figure 19

- | | |
|----------|----------|
| 1. Bolts | 2. Panel |
|----------|----------|

5. Attach the valve assembly and bracket to the machine using the bolts that were holding the panel onto the machine ([Figure 20](#)).

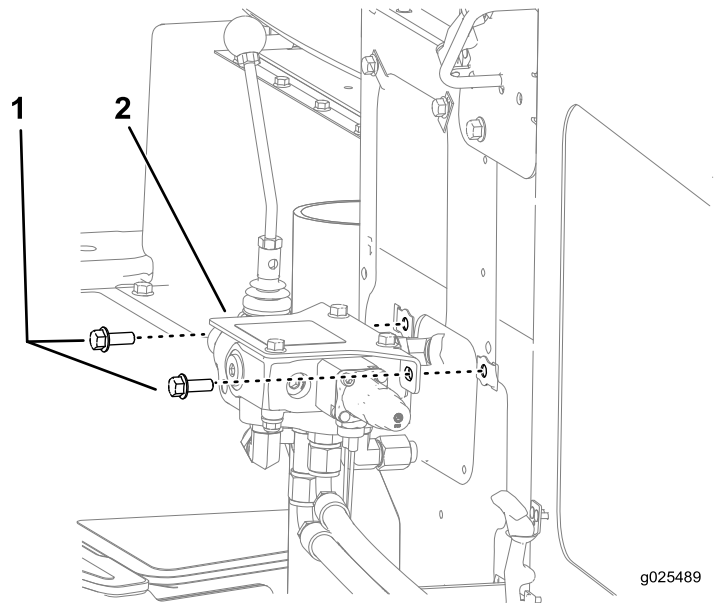


Figure 20

- | | |
|--|-------------------|
| 1. Bolts previously removed from panel | 2. Valve assembly |
|--|-------------------|

6. Locate the single wire loop on the wiring harness located in the machine near the side panel that was just removed.
7. Connect the single wire loop to the sensor switch ([Figure 18](#)).

Note: Do not operate the machine without the sensor switch connected.

4

Installing the Hydraulic Hoses

Parts needed for this procedure:

1	90-degree adapter fitting (Pro Sneak 365)
3	90-degree fitting (Pro Sneak 365)
1	Straight fitting (Pro Sneak 365)
6	Cable ties
1	Hydraulic tube
1	Hydraulic tube cap
2	Hose (15 inches)
4	Hose (82 inches)
2	Hose (88 inches)
1	Hose (28 inch / Pro Sneak 365)
1	Hose (36 inches / Pro Sneak 360)
1	Hose (80 inches / Pro Sneak 360)
1	Hose (21 inches / Pro Sneak 360)
1	Hose (18 inches / Pro Sneak 360)
1	Hose (26 inches / Pro Sneak 360)
1	Hose (31 inches / Pro Sneak 360)

Installing the Hydraulic Hoses on the Pro Sneak 360

Use an appropriate container to catch the hydraulic fluid coming from disconnected hoses.

1. Remove the hose that is currently installed onto the first port of the hydraulic gear pump, add a connector to the hose fitting, and connect the hose and connector to the 15-inch hose (Figure 26).
2. Connect the other end of the 15-inch hose to the Out port on the trencher valve.

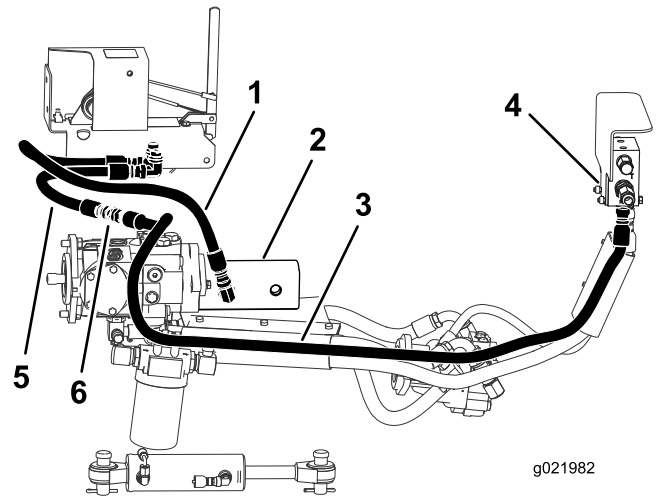


Figure 21

- | | |
|---|---------------------|
| 1. Hose (36 inches) | 4. Valve |
| 2. Hydraulic gear pump | 5. Hose (15 inches) |
| 3. Hose (previously connected to hydraulic gear pump) | 6. Connector |

3. Torque the hose fittings to 74 to 88 N-m (55 to 65 ft-lb).
4. Connect the 36-inch hose to the hydraulic gear pump to the pressure (P/IN) port on the valve (Figure 26).
5. Torque the hose fittings to 74 to 88 N-m (55 to 65 ft-lb).
6. Connect 1 hose (82 inches) from port A on the valve to port A on the hydraulic motor assembly (Figure 22).

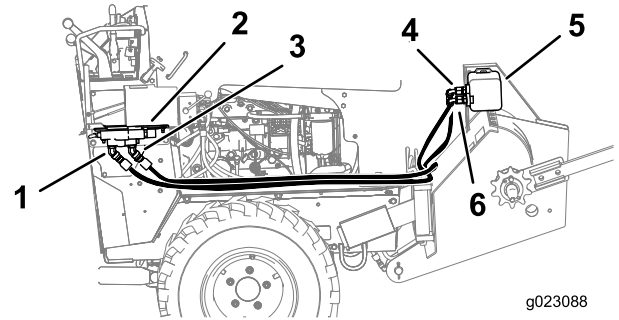


Figure 22

- | | |
|-----------|-----------------------------|
| 1. Port A | 4. Port B |
| 2. Valve | 5. Hydraulic motor assembly |
| 3. Port B | 6. Port A |

7. Torque the hose fittings to 74 to 88 N-m (55 to 65 ft-lb).
8. Connect the other 82 inch hose from port B on the valve to port B on the hydraulic motor assembly (Figure 22).
9. Torque the hose fittings to 74 to 88 N-m (55 to 65 ft-lb).
10. Remove the 2 plow hose ends that are connected to the attachment lift (Figure 23).

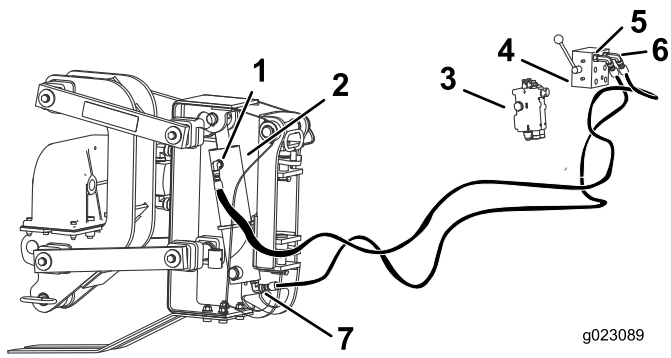


Figure 23

g023089

- | | |
|-----------------------|------------|
| 1. Port A | 5. Port C1 |
| 2. Plow lift cylinder | 6. Port C2 |
| 3. Attachment lift | 7. Port B |
| 4. Control valve | |

11. Connect the 21-inch hose to port C2 on the control valve to the hose connected to port A on the plow lift cylinder, located near the top of the plow lift cylinder (Figure 23).
12. Torque the hose fittings to 27 to 32 N-m (20 to 24 ft-lb).
13. Connect the 18-inch hose to port C1 on the control valve, located closest to the handle, to the hose connected to port B on the plow lift cylinder, located near the bottom of the plow lift cylinder (Figure 23); torque the hose fittings to 27 to 32 N-m (20 to 24 ft-lb).
14. Connect the 26-inch hose to port B on the control valve to port A on the attachment lift (Figure 24).

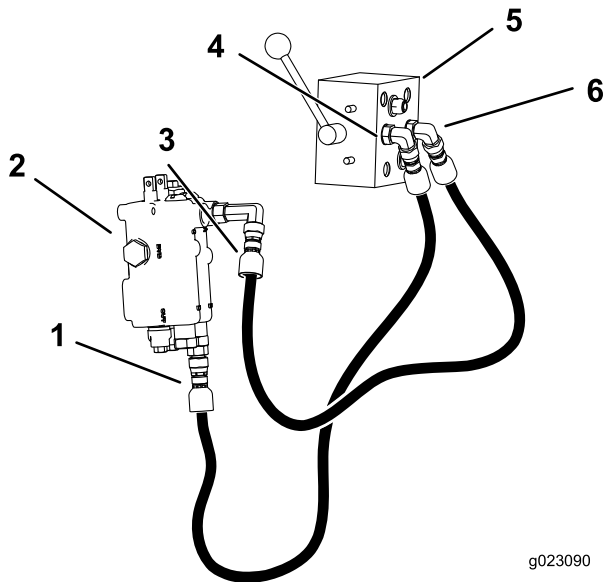


Figure 24

g023090

- | | |
|--------------------|------------------|
| 1. Port B | 4. Port A |
| 2. Attachment lift | 5. Control Valve |
| 3. Port A | 6. Port B |

15. Torque the hose fittings to 27 to 32 N-m (20 to 24 ft-lb).

16. Connect the 31-inch hose to port A on the control valve to port B on the attachment lift (Figure 24).
17. Torque the hose fittings to 27 to 32 N-m (20 to 24 ft-lb).
18. Connect the 88-inch hose to port C3 on the control valve, the bottom hole closest to the handle, to port A on the hydraulic cylinder assembly (Figure 25).

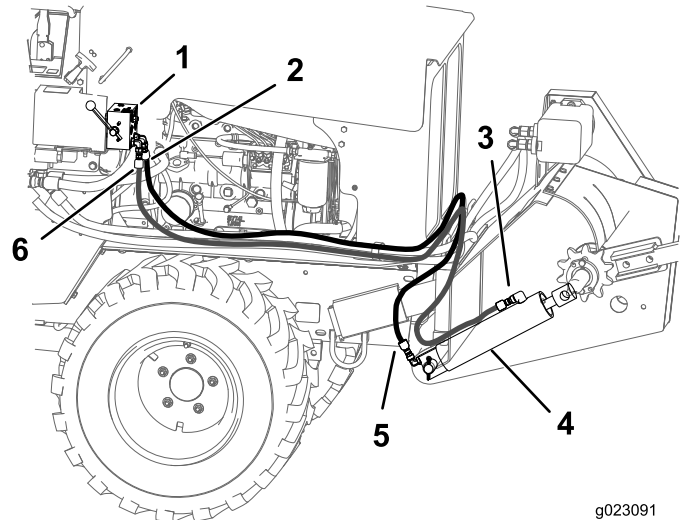


Figure 25

g023091

- | | |
|------------------|--------------------------------|
| 1. Control valve | 4. Hydraulic cylinder assembly |
| 2. Port C3 | 5. Port A |
| 3. Port B | 6. Port C4 |

19. Torque the hose fittings to 27 to 32 N-m (20 to 24 ft-lb).
20. Connect the 80-inch hose to port C4 on the control valve, the bottom hole closed to the machine, to port B on the hydraulic cylinder assembly (Figure 25).
21. Torque the hose fittings to 27 to 32 N-m (20 to 24 ft-lb).

Installing the Hydraulic Hoses on the Pro Sneak 365

1. Remove the hose that is currently installed onto the first port of the hydraulic gear pump, add a 90-degree connector to the hose fitting, and connect the hose and connector to the 15-inch hose (Figure 26).

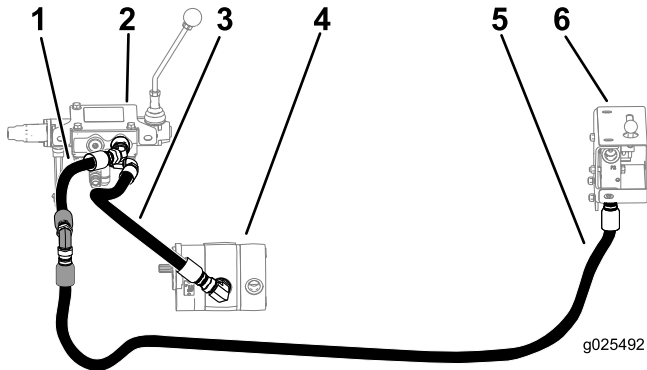


Figure 26

- | | |
|-------------------|---|
| 1. Hose (15 inch) | 4. Hydraulic gear pump |
| 2. Valve | 5. Hose (previously connected to hydraulic gear pump) |
| 3. Hose (28 inch) | 6. Plow valve |
2. Connect the 15-inch hose to side T-port on the valve
 3. Torque the hose fittings to 74 to 88 N-m (55 to 65 ft-lb).
 4. Use a cable tie to secure the adapter to the existing hose under the hydraulic tank.
 5. Connect the 28-inch hose to the hydraulic gear pump and to the P-port on the valve (Figure 26).
 6. Torque the hose fittings to 74 to 88 N-m (55 to 65 ft-lb).
 7. Connect 1 hose (82 inches) from the valve to the hydraulic motor assembly (Figure 27).

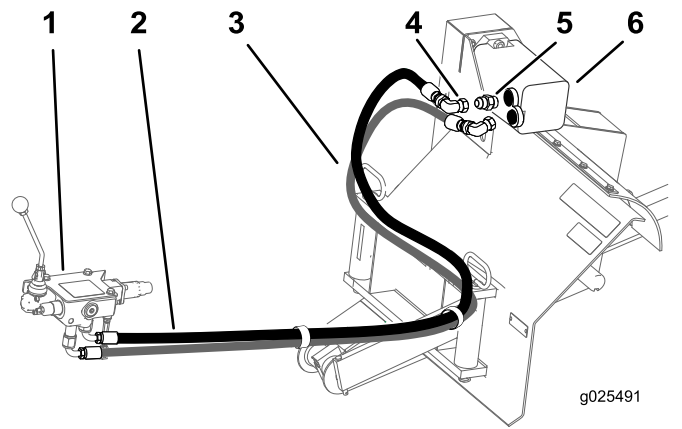


Figure 27

- | | |
|-------------------|-------------------------------------|
| 1. Valve | 4. 90-degree swivel adaptor fitting |
| 2. Hose (82 inch) | 5. Straight fitting |
| 3. Hose (82 inch) | 6. Hydraulic motor assembly |

8. Torque the hose fittings to 74 to 88 N-m (55 to 65 ft-lb).
9. Connect the other 82 inch hose from the other fitting on the valve to the hydraulic motor assembly as shown in Figure 27.
10. Torque the hose fittings to 74 to 88 N-m (55 to 65 ft-lb).
11. Remove the 2 plow hoses that are connected to the bulkhead plate located behind the panel that was removed from the machine and attach them to the fittings on the top row of the valve as shown in Figure 28.

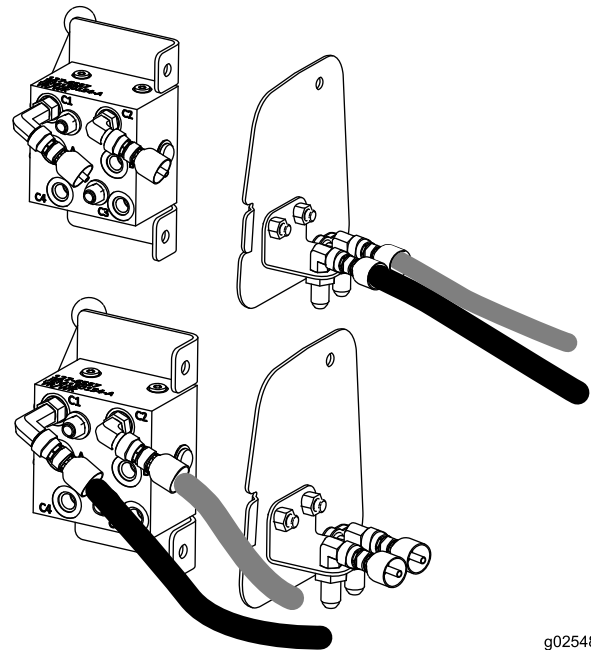
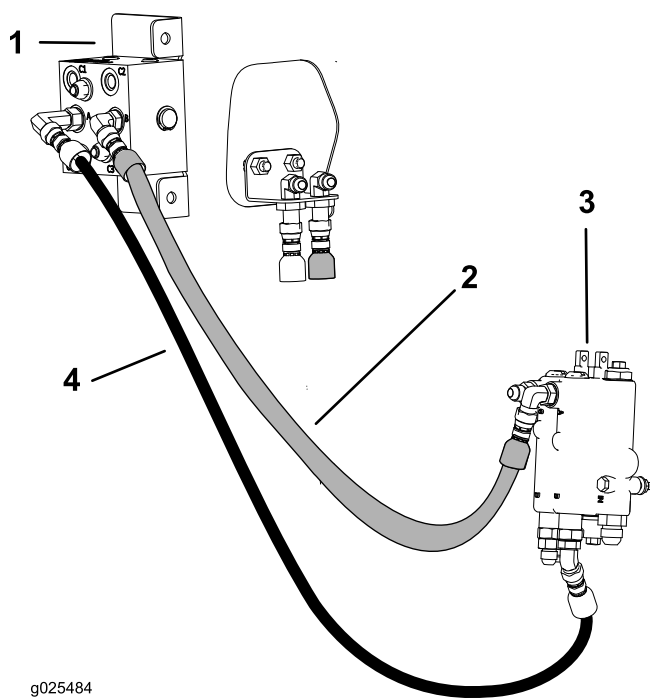


Figure 28

12. Torque the hose fittings to 27 to 32 N-m (20 to 24 ft-lb).

- Remove the 2 hoses that are connected to the under side of the bulkhead plate located behind the panel that was removed from the machine and attach them to the fittings on the middle row of the valve as shown in [Figure 29](#).



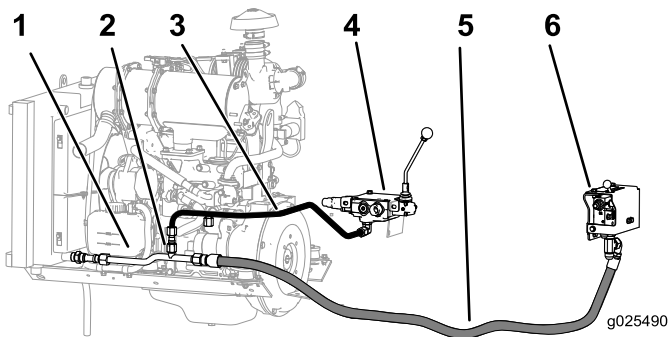
g025484

Figure 29

- | | |
|----------|--------------------------|
| 1. Valve | 3. Attachment lift valve |
| 2. Hose | 4. Hose |

- Torque the hose fittings to 27 to 32 N-m (20 to 24 ft-lb).
- Remove the cap on the oil cooler line ([Figure 30](#)).

Note: Use an appropriate pan to catch the hydraulic fluid.



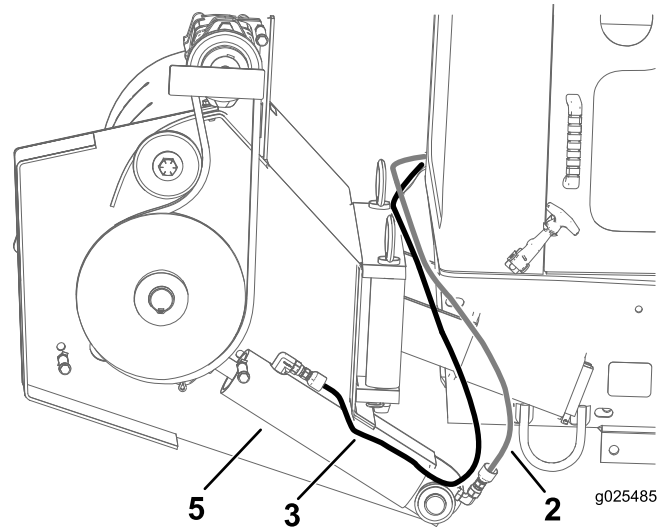
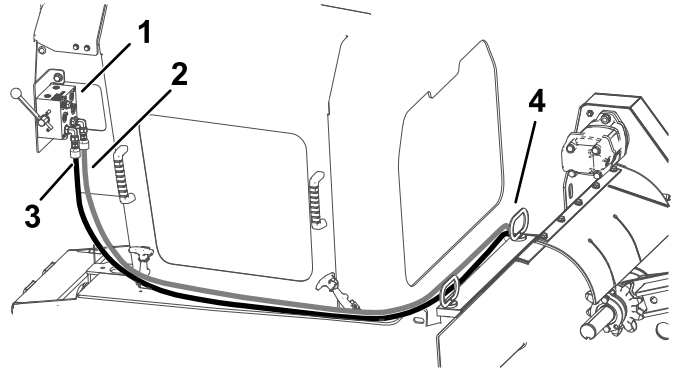
g025490

Figure 30

- | | |
|-----------------------|---|
| 1. Oil cooler line | 4. Trencher valve |
| 2. Hydraulic tube cap | 5. Hose coming from the plow valve to the oil cooler line |
| 3. Hydraulic tube | 6. Plow valve |

- Connect the hydraulic tube to the lower port on the oil cooler line as shown in [Figure 30](#).

- Connect 1 of the 88-inch hoses to the inside fitting on the bottom row of the control valve (port C3) to the bottom of the hydraulic cylinder assembly using a 90-degree fitting ([Figure 30](#)).



g025485

Figure 31

- | | |
|--|--|
| 1. Control valve | 3. Hose (connected to the inside fitting on the control valve to the bottom of the hydraulic cylinder) |
| 2. Hose (connected to the outside fitting on the control valve to the top of the hydraulic cylinder) | 4. Hydraulic cylinder |

- Torque the hose fittings to 27 to 32 N-m (20 to 24 ft-lb).
- Connect the other 88-inch hose to the outside fitting on the bottom row of the control valve (port C4) ([Figure 31](#)).
- Torque the hose fittings to 21 to 28 N-m (15 to 21 ft-lb).

5

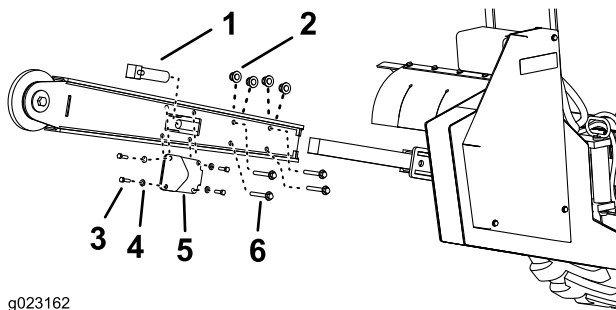
Installing the Boom and Digging Chain (Sold separately)

Parts needed for this procedure:

1	Boom assembly (sold separately)
1	Chain (sold separately)

Procedure

1. Raise the trencher about 15 cm (6 inches) off of the ground.
2. Stop the engine and remove the key.
3. Slide the boom over the arm on the drive head (Figure 32).



g023162

Figure 32

- | | |
|-----------------------------|----------------------------|
| 1. Piston | 4. Washer |
| 2. Nut | 5. Cover plate |
| 3. Bolt (5/16 x 1-1/4 inch) | 6. Bolt (1/2 x 3-1/4 inch) |

4. Place the piston inside the boom housing and install the cover plate with the 4 bolts (5/16 x 1-1/4 inch) and 4 washers.
5. Secure the boom assembly to the trencher drive with the 4 bolts (1/2 x 3-1/4 inch) and 4 nuts.
6. Raise the trencher about 6 inches (15 cm) off of the ground.
7. Stop the engine and remove the key.
8. If the chain is not connected, connect the links by pressing or hammering the clevis pin supplied with the chain through the links.

Important: To avoid bending the chain links, place blocks under and between the links when hammering the clevis pin through.

9. Secure the clevis pin with the cotter pin supplied with the chain.

10. Loop the digging chain over the auger drive shaft and onto the drive sprocket, ensuring that the digging teeth point forward on the upper span.
11. Set the upper span of the chain into place on the trencher boom, then wrap the chain around the roller at the end of the boom.

Refer to [Servicing the Trencher Digging Chain \(page 22\)](#) to adjust the chain tension.

6

Installing the Safety Bar

Parts needed for this procedure:

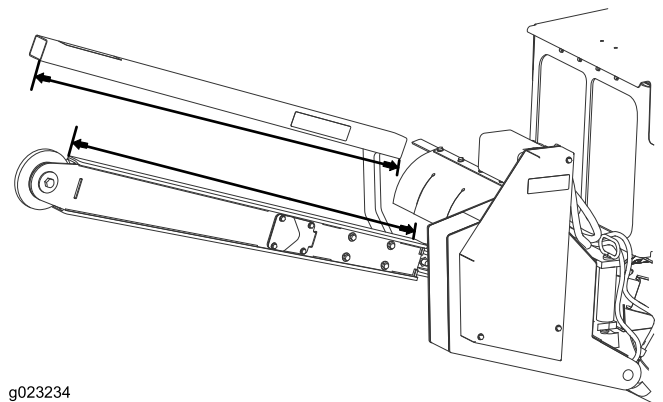
1	Safety bar
2	Bolts (5/8 inch)
2	Locknuts (5/8 inch)

Procedure

Ensure that you install the correct size safety bar for the size of boom you are using.

Trencher Boom Size	Safety Bar Size
61 cm (24 inches)	92 cm (36 inches)
92 cm (36 inches)	122 cm (48 inches)

See [Figure 33](#) as a guide on how to measure the boom and safety bar.



g023234

Figure 33

Install the safety bar using the 2 bolts and 2 locknuts (Figure 34).

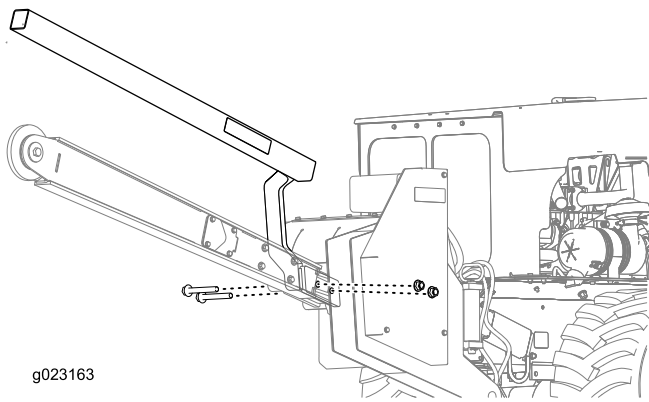


Figure 34

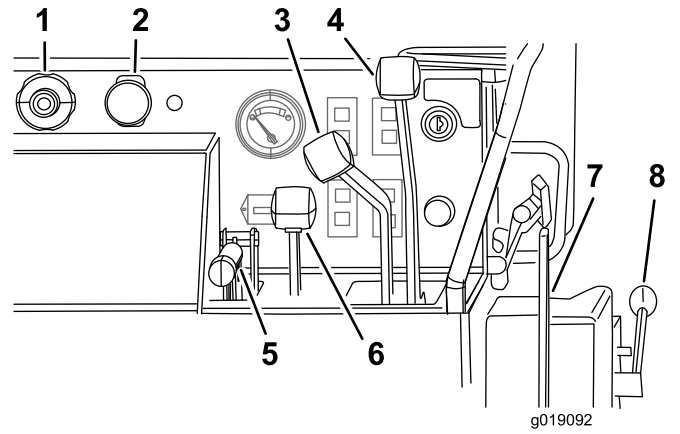


Figure 35
ProSneak 360

- | | |
|------------------------------|------------------------------|
| 1. Throttle | 5. Parking brake |
| 2. PTO | 6. Attachment control lever |
| 3. Creep control | 7. Trencher control lever |
| 4. Directional control lever | 8. Attachment selector lever |

7

Testing the Installation

Parts needed for this procedure:

1	Trencher boom and chain kit
---	-----------------------------

Procedure

Use the following procedure to test the operation of the machine. If anything does not work as described, stop the machine and fix the problem before continuing.

1. Acquire and install a boom and chain onto your trencher as required for your application.

Note: There are several boom and chain options available from your Authorized Toro Dealer.

Follow the instructions supplied with the boom for proper assembly.

2. Sit in the operator seat and start the machine.
3. Move the attachment selector lever down to the plow position then move the attachment control lever back and forth ([Figure 36](#)).

Note: The plow should move up and down.

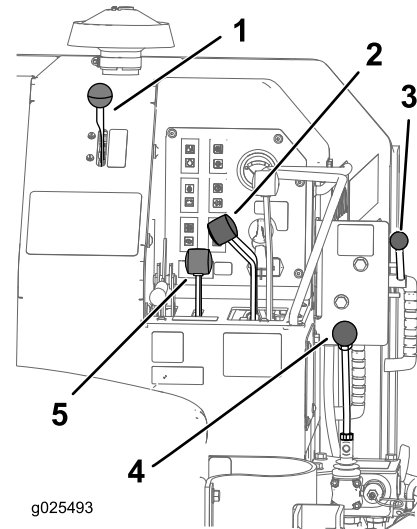


Figure 36
ProSneak 365

- | | |
|------------------------------|-----------------------------|
| 1. Throttle | 4. Trencher control valve |
| 2. Creep control lever | 5. Attachment control lever |
| 3. Attachment selector lever | |

4. Move the attachment selector lever up to the trencher position then move the attachment control lever back and forth ([Figure 36](#)).

The trencher head should move up and down.

5. Pull the attachment control lever toward you to raise the trencher off the ground.
6. Push the trencher control lever away from you ([Figure 36](#)).

The trencher should rotate forward in a clockwise direction, pulling the teeth back towards the machine along the bottom of the trencher boom.

7. Pull the trencher control lever toward you (Figure 36).

The trencher should rotate backward in a counterclockwise direction, pulling the teeth back toward the machine along the top of the trencher boom.

8. With the trencher running, stand up, removing your weight from the operator seat.

The engine should stop within 1 second. If it does not, ensure that the sensor switch, on the trencher valve, is connected.

If the switch is connected and the engine does not stop, contact your Authorized Toro Dealer for repairs before using the machine.

Product Overview

Specifications

Note: Specifications and design are subject to change without notice.

	Machine with plow, ROPS, and trencher with 24-inch boom	Machine with plow, ROPS, and trencher with 36-inch boom
Width	92 cm (36 inches) wheels mounted narrow / 117 cm (46 inches) wheels mounted wide	92 cm (36 inches) wheels mounted narrow / 117 cm (46 inches) wheels mounted wide
Length	450 cm (177 inches)	482.6 cm (190 inches)
Height	210.82 cm (83 inches)	210.82 cm (83 inches)
Weight	1492.32 kg (3290 lb)	1519.53 kg (3350 lb)
Maximum trench depth	61 cm (24 inches)	92 cm (36 inches)

Attachments/Accessories

A selection of Toro approved attachments and accessories is available for use with the machine to enhance and expand its capabilities. Contact your Authorized Service Dealer or Distributor or go to www.Toro.com for a list of all approved attachments and accessories.

Operation

Refer to your traction unit *Operator's Manual* for more information on installing and removing attachments on your traction unit.

Important: Always use the machine to lift and move the attachment.

Selecting the Proper Components for the Trencher

Using the correct trencher components helps to increase the trenching speed and extending the life of the trencher. Contact an Authorized Toro Service Dealer for more information on parts for your trencher.

Selecting the Proper Chain

It is important to have the correct chain for the job. The soil conditions will determine the type of chain that has the strength and tension that you need. A chain that is too light wears fast or breaks; a chain that is too heavy increases the load on the machine and reduces the trencher digging speed; however, a heavy chain has a longer wear life than a lighter chain.

Important: Maintain the correct chain tension. If the chain is too tight or too loose, the digging efficiency decreases and the parts wear more quickly.

Note: Trencher chains are rated by their tensile strength; for example, a 22,680 kg (50,000 lb) chain takes a minimum of 22,680 kg (50,000 lb) of pull to break the chain.

Selecting the Proper Digging Teeth

The most important components of the trencher are the digging teeth; the type of teeth that you select and the arrangement of teeth that you use greatly affects the digging efficiency and tooth wear.

1. Choose the teeth (cupped, rock and frost carbide cutters, or a combination of both).
2. Choose the tooth width and arrangement.

Types of Digging Teeth

The types of digging teeth are as follows:

- **Cupped teeth (Figure 37)** are the best for cutting through light to medium soil. The cupped design of the tooth cuts through the soil and then moves it up and out of the trench.

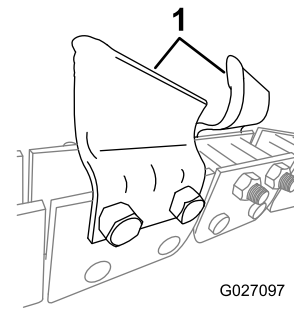


Figure 37

1. Cupped teeth

- **Shark teeth (Figure 38) or Rock and Frost teeth (Figure 39)** are best for cutting ground that is very hard, rocky, or frozen; it is also used for cutting through asphalt.

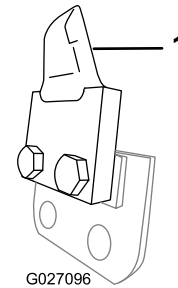


Figure 38

1. Shark tooth

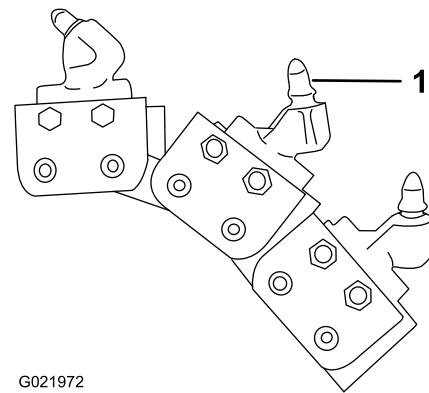


Figure 39

1. Rock and frost tooth

Arrangements of Digging Teeth

The arrangement of digging teeth involves both where and how each tooth is attached to the digging chain. Use the following guidelines when you select the arrangements of teeth:

- Install teeth that are the same width and are spaced equally around the chain.
- Use fewer teeth on the chain when you are operating the trencher in wet clay or gumbo.
- Use more teeth on the chain when you are operating the trencher in sandy loam or rocky ground.

Combinations of Boom, Chain, and Teeth for Various Soil Types and Conditions

Soil Type	Boom Type		Chain Type			Digging Teeth Type			
	Sprocket Boom	Rock Boom	Standard Chain	HD ABF	H-Plate	Cup Cutter	Rock/Frost Mining Bit	Shark	Mixed
Sand	X		X			X			
Sandy Loam	X		X			X			
Loose Shale	X	X	X			X			X
Topsoil	X		X			X			
Caliche (Hard)		X		X		X	X	X	X
Clay (Gumbo)	X			X		X			
Coral		X		X	X		X	X	
Rock (Loose)		X		X	X		X	X	
Asphalt		X		X	X		X	X	
Hard Clay		X		X	X		X	X	X
Frozen Soil		X		X	X		X	X	X

Note: You need a rock wheel to cut solid rock or concrete.

Digging a Trench

Note: To assist in digging a straight trench, stretch a string line along the trench route on the side opposite the auger discharge.

1. Start the engine.
2. Adjust the throttle when the engine is warm by:
 - pulling the throttle out to full throttle (ProSneak 360 only).
 - pushing the throttle lever up (ProSneak 365 only).

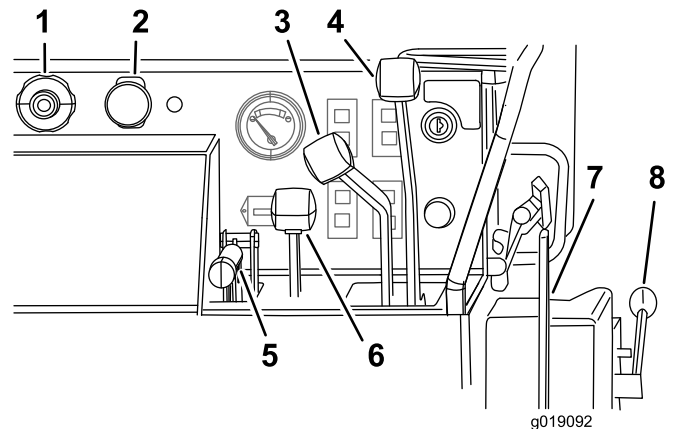


Figure 40
ProSneak 360

- | | |
|------------------------------|------------------------------|
| 1. Throttle | 5. Parking brake |
| 2. PTO | 6. Attachment control lever |
| 3. Creep control lever | 7. Trencher control lever |
| 4. Directional control lever | 8. Attachment selector lever |

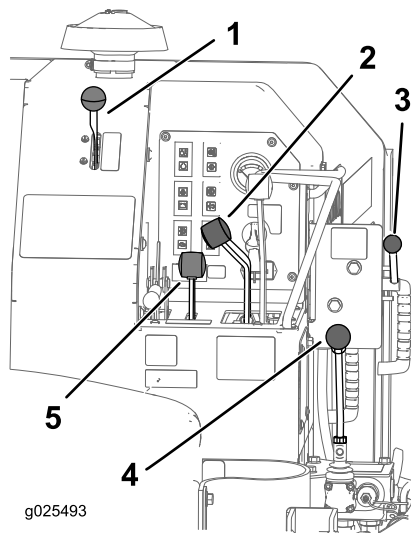


Figure 41
ProSneak 365

- | | |
|------------------------------|-----------------------------|
| 1. Throttle | 4. Trencher control lever |
| 2. Creep control lever | 5. Attachment control lever |
| 3. Attachment selector lever | |

3. Move the machine so that the trencher boom is several feet beyond the starting point of the trench.
4. Move the attachment selector lever to the trencher lift position.
5. Align the machine to the center line of the new trench.
6. Slowly lower the trencher to the ground so that the boom and chain are parallel to the ground.
7. Move the trencher control lever to the trench position.
8. Slowly move the attachment control lever to lower the boom to the necessary depth.
9. Release the parking brake.
10. Move the creep control lever to the reverse position.
11. Ensure that all parts of the trencher are functioning correctly.
12. Slowly move the traction unit rearward to extend the trench.

Note: If you move too fast, the trencher will stall. If it stalls, raise it slightly, slowly drive forward, or reverse the chain direction momentarily.

13. When finished with the trench operation, move the creep control lever to the neutral position and slowly move the attachment control lever to the raise position until the boom is out of the trench.
14. Move the trencher control lever to the stop position.
15. Raise the boom to the transport position.
16. Apply the parking brake.
17. Move the throttle to the idle position, stop the engine, and remove the key.

Operating Tips

- Clean the area of trash, branches, and rocks before digging to prevent damage to the equipment.
- Always begin digging with the slowest ground speed possible. Increase the speed if conditions allow for safe operation.
- Always use full throttle (maximum engine speed) when trenching.
- Always trench backwards (i.e., in reverse).
- Trench at a 45 to 60-degree angle for best results.
- If the trencher binds in the soil, stop the machine and reverse the chain direction. Once the chain is loose, resume forward chain operation and continue trenching.
- If you need the finished trench to be cleaner than what is possible with the trencher, you can purchase a crumber from your Authorized Toro Dealer. The crumber mounts onto the trencher and scrapes the trench clean as you run the trencher.
- To improve the quality of trenches less than 61 cm (24 inches) deep, use a 61 cm (24-inch) boom on the trencher.

Maintenance

Recommended Maintenance Schedule(s)

Maintenance Service Interval	Maintenance Procedure
After the first 8 hours	<ul style="list-style-type: none">• Check the chain tension.
Before each use or daily	<ul style="list-style-type: none">• Grease the trencher.• Check the chain tension.
Every 25 hours	<ul style="list-style-type: none">• Adjust the trencher drive chain.
Before storage	<ul style="list-style-type: none">• Grease the trencher.• Paint chipped surfaces.
Monthly	<ul style="list-style-type: none">• Check the sensor switch; adjust as needed.

Greasing the Trencher

Service Interval: Before each use or daily

Before storage

Grease the fittings, as shown in [Figure 42](#) and [Figure 43](#) every day and immediately after every washing.

Grease Type: General-purpose grease

1. Stop the engine and remove the key.
2. Clean the grease fittings with a rag.
3. Connect a grease gun to each fitting.
4. Pump grease into the fittings until grease begins to ooze out of the bearings.
5. Wipe up any excess grease.

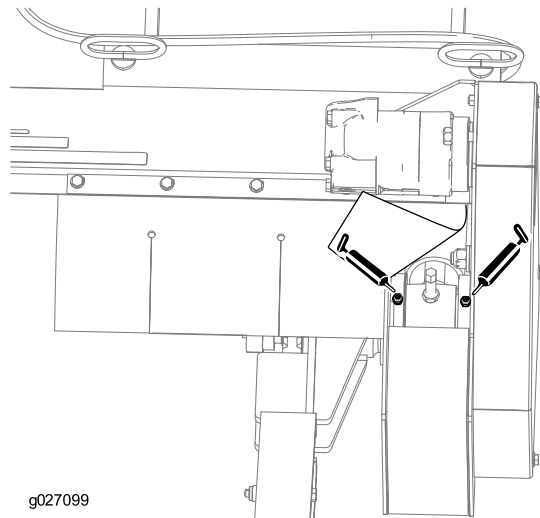


Figure 42

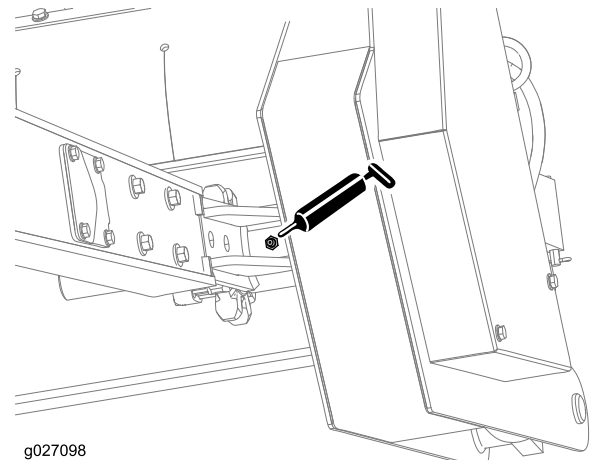


Figure 43

Servicing the Trencher Digging Chain

Checking the Chain Tension

Service Interval: After the first 8 hours

Before each use or daily

1. Start the engine and make a trench about 3 m (10 ft) long.
2. Stop the trencher chain and lift the boom out of the trench.
3. Move the boom to the horizontal position .

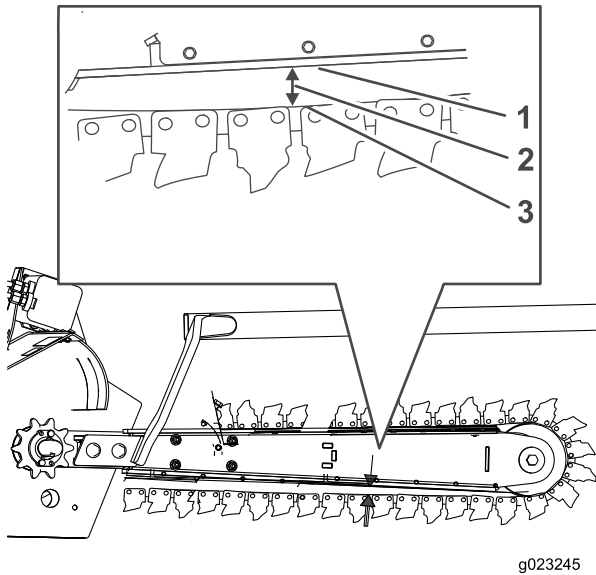


Figure 44

1. Lower wear strip
2. Gap
3. Chain

4. Stop the engine and remove the key.
5. Measure the distance between the chain and the bottom of the lower wear strip ([Figure 44](#)).
 - If the gap between the lower wear strip and the chain is 25 to 38 mm (1 to 1-1/2 inch), the chain tension is correct ([Figure 44](#)).
 - If the gap is smaller than 25 mm (1 inch), the chain tension is too tight; refer to [Decreasing the Chain Tension](#) ([page 22](#)).
 - If the gap is larger than 38 mm (1-1/2 inch), the chain tension is too loose; refer to [Increasing the Chain Tension](#) ([page 22](#)).

Note: The chain tension has a significant effect on the productivity of the machine; set the chain tension as loose as possible.

Increasing the Chain Tension

Grease Type: Lithium-based grease

1. Remove the top access cover plate on the trencher boom to access the piston ([Figure 45](#)).

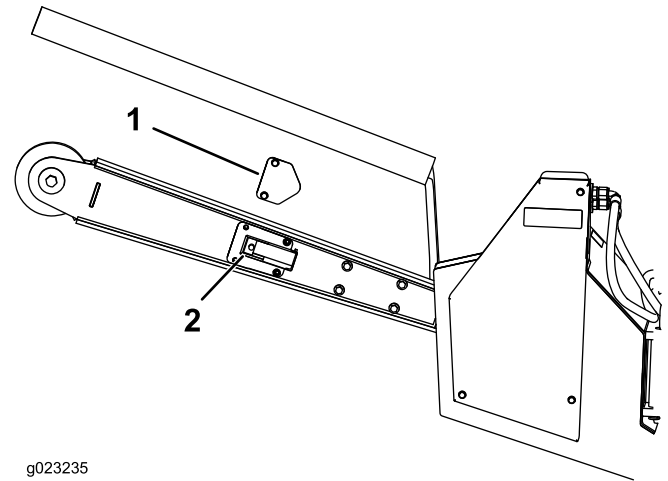


Figure 45

1. Top access cover plate
2. Piston

2. Loosen the bottom 4 bolts on the boom and remove the cap from the grease fitting.
3. While observing the chain gap, pump the grease gun until the gap between the wear strip and the chain is 25 to 38 mm (1 to 1-1/2 inches).
4. Tighten the bottom 4 bolts on the boom.
5. Install the top access cover plate.

Decreasing the Chain Tension

1. Remove the top access cover plate on the trencher boom to access the piston ([Figure 45](#)).
2. Loosen the bottom 4 bolts on the boom and remove the cap from the grease fitting.
3. Slowly rotate the bleed plug counterclockwise 2 or 3 revolutions, and allow the grease to flow from around the plug.
4. When you achieve a 25 to 38 mm (1 to 1-1/5 inch) gap between the chain and the wear strip, tighten the plug.
5. Tighten the bottom 4 bolts on the boom.
6. Install the top access cover plate.

Checking and Adjusting the Sensor Switch (ProSneak 360 only)

Service Interval: Monthly

1. Measure the gap in between the back of the sensor and the bracket. The gap should be 0.3175 cm (0.125 inch).

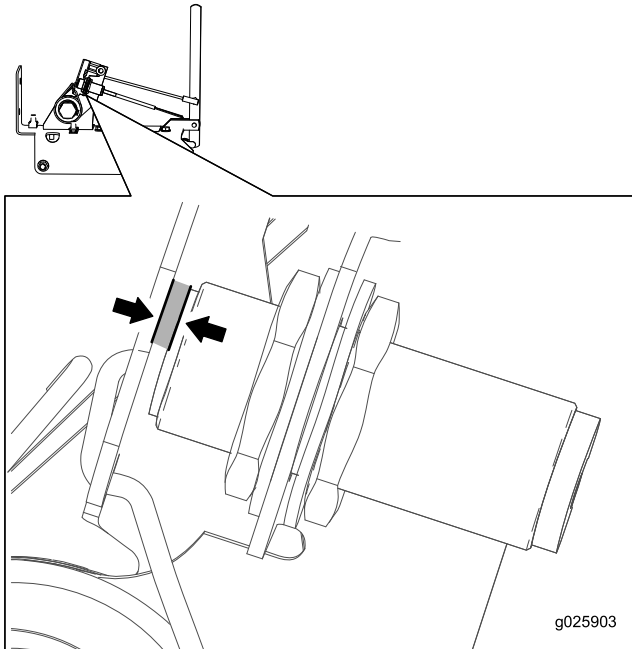


Figure 46

2. Loosen the nuts to adjust the switch and move the switch to obtain the correct gap length.
3. Tighten the nuts.

Adjusting the Trencher Drive Chain

Service Interval: Every 25 hours

Important: Do not over-tighten the chain. Excess chain tension may damage drive components.

1. Remove the chain guard from the trencher.
2. Adjust the tension sprocket so the drive chain has approximately 13 mm (1/2 inch) deflection at the position shown.

Note: Hold the tension sprocket in position and tighten the bolt and self-locking nut for the tension sprocket to a torque of 108 to 136 N-m (80 to 100 ft-lb) (Figure 47).

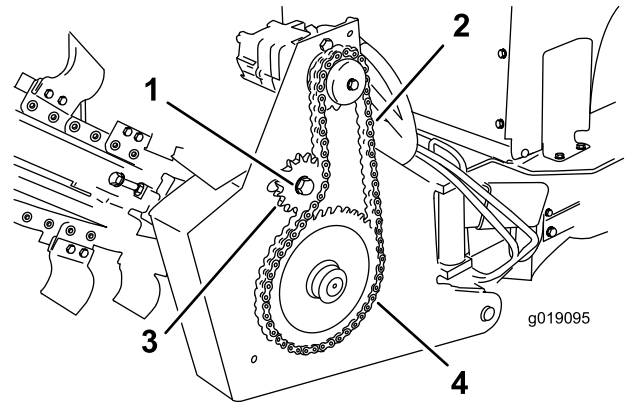


Figure 47

- | | |
|---------------------------|---------------------|
| 1. Bolt | 3. Tension sprocket |
| 2. Tension check location | 4. Drive chain |

3. Apply chain and cable lubricant to the drive chain.
4. Install the chain guard on the trencher.

Storage

1. Before long term storage, brush the dirt from the attachment.
2. Check the condition of the digging chain. Adjust and lubricate the chain. Replace any worn or damaged teeth.
3. Check and tighten all bolts, nuts, and screws. Repair or replace any part that is damaged or worn.
4. Ensure that all hydraulic couplers are connected together to prevent contamination of the hydraulic system.
5. Paint all scratched or bare metal surfaces. Paint is available from your Authorized Service Dealer.
6. Store the machine in a clean, dry garage or storage area. Cover the machine to protect it and keep it clean.

Troubleshooting

Problem	Possible Cause	Corrective Action
The chain does not turn.	<ol style="list-style-type: none"> 1. A hydraulic coupler is not completely connected. 2. A hydraulic coupler is damaged. 3. There is an obstruction in a hydraulic hose 4. An auxiliary valve on the machine is not opening. 5. The boom end bearing failed. 6. The digging chain is too tight. 7. There is sand buildup in tooth root of the drive sprocket. 8. There is a hydraulic motor or chain drive failure. 9. The sensor switch needs to be replaced (Pro Sneak 365) or adjusted (Pro Sneak 360). 	<ol style="list-style-type: none"> 1. Check and tighten all couplers. 2. Check/replace the coupler(s). 3. Find and remove the obstruction. 4. Repair the valve. 5. Replace the bearing. 6. Adjust the digging chain. 7. Raise the trencher and run the chain backwards, then reduce the chain tension. 8. Contact your Authorized Service Dealer. 9. Replace or adjust the sensor switch. To adjust the switch refer to Checking and Adjusting the Sensor Switch.
The trencher does not dig fast enough.	<ol style="list-style-type: none"> 1. The teeth are worn. 2. There is a restriction in a quick coupler or hose. 3. The hydraulic system is too hot. 4. The relief valve is set below specifications. 	<ol style="list-style-type: none"> 1. Replace any worn teeth. 2. Check the hoses and couplers and repair any problems found. 3. Shutdown the machine and allow the system to cool. 4. Contact your Authorized Service Dealer.
The chain turns in the wrong direction.	<ol style="list-style-type: none"> 1. The hydraulic hoses are installed incorrectly. 	<ol style="list-style-type: none"> 1. Disconnect the hoses and install them in the correct positions.
The bearing case lube is contaminated.	<ol style="list-style-type: none"> 1. The fill plug is leaking. 2. There is an o-ring failure on the motor. 3. There is a seal failure. 	<ol style="list-style-type: none"> 1. Look for moisture around the fill plug. If present, change the oil, and replace the plug and the plug O-ring. 2. Contact your Authorized Service Dealer. 3. Contact your Authorized Service Dealer.

Notes:

Notes:



Toro Compact Utility Equipment Warranty

A One-Year Limited Warranty

Compact Utility Equipment
(CUE) Products

Conditions and Products Covered

The Toro Company and its affiliate, Toro Warranty Company, pursuant to an agreement between them, jointly warrant your Toro Compact Utility Equipment ("Product") to be free from defects in materials or workmanship. The following time periods apply from the date of purchase:

Products	Warranty Period
Pro Sneak Compact Utility Loaders, Trenchers, Stump Grinders, and Attachments	1 year or 1000 operating hours, whichever occurs first
Kohler Engines	3 years*
All other Engines	2 years*

Where a warrantable condition exists, we will repair the Product at no cost to you including diagnosis, labor, and parts.

*Some engines used on Toro Products are warranted by the engine manufacturer.

Instructions for Obtaining Warranty Service

If you think that your Toro Product contains a defect in materials or workmanship, follow this procedure:

1. Contact any Authorized Toro Compact Utility Equipment (CUE) Service Dealer to arrange service at their dealership. To locate a dealer convenient to you, access our website at www.Toro.com. You may also call our Toro Customer Care Department toll free at the number below.
2. Bring the product and your proof of purchase (sales receipt) to the Service Dealer.
3. If for any reason you are dissatisfied with the Service Dealer's analysis or with the assistance provided, contact us at:

SWS Customer Care Department
Toro Warranty Company
8111 Lyndale Avenue South
Bloomington, MN 55420-1196
Toll Free: 888-384-9940

Owner Responsibilities

You must maintain your Toro Product by following the maintenance procedures described in the *Operator's Manual*. Such routine maintenance, whether performed by a dealer or by you, is at your expense. Parts scheduled for replacement as required maintenance ("Maintenance Parts"), are warranted for the period of time up to the scheduled replacement time for that part. Failure to perform required maintenance and adjustments can be grounds for disallowing a warranty claim.

Items and Conditions Not Covered

Not all product failures or malfunctions that occur during the warranty period are defects in materials or workmanship. This express warranty does not cover the following:

- Product failures which result from the use of non-Toro replacement parts, or from installation and use of add-on, modified, or unapproved accessories
- Product failures which result from failure to perform required maintenance and/or adjustments
- Product failures which result from operating the Product in an abusive, negligent or reckless manner
- Parts subject to consumption through use unless found to be defective. Examples of parts which are consumed, or used up, during normal product operation include, but are not limited to, belts, wipers, spark plugs, tires, filters, gaskets, wear plates, seals, O-rings, drive chains, clutches.
- Failures caused by outside influence. Items considered to be outside influence include, but are not limited to, weather, storage practices, contamination, use of unapproved coolants, lubricants, additives, or chemicals, etc.
- Normal "wear and tear" items. Normal "wear and tear" includes, but is not limited to, worn painted surfaces, scratched decals, etc.
- Repairs necessary due to failure to follow recommended fuel procedure (consult *Operator's Manual* for more details)
 - Removing contaminants from the fuel system is not covered
 - Use of old fuel (more than one month old) or fuel which contains more than 10% ethanol or more than 15% MTBE
 - Failure to drain the fuel system prior to any period of non-use over one month
- Any component covered by a separate manufacturer's warranty
- Pickup and delivery charges

General Conditions

Repair by an Authorized Toro Compact Utility Equipment (CUE) Service Dealer is your sole remedy under this warranty.

Neither The Toro Company nor Toro Warranty Company is liable for indirect, incidental or consequential damages in connection with the use of the Toro Products covered by this warranty, including any cost or expense of providing substitute equipment or service during reasonable periods of malfunction or non-use pending completion of repairs under this warranty. All implied warranties of merchantability and fitness for use are limited to the duration of this express warranty. Some states do not allow exclusions of incidental or consequential damages, or limitations on how long an implied warranty lasts, so the above exclusions and limitations may not apply to you.

This warranty gives you specific legal rights, and you may also have other rights which vary from state to state.

Except for the engine warranty coverage and the Emissions warranty referenced below, if applicable, there is no other express warranty. The Emissions Control System on your Product may be covered by a separate warranty meeting requirements established by the U.S. Environmental Protection Agency (EPA) or the California Air Resources Board (CARB). The hour limitations set forth above do not apply to the Emissions Control System Warranty. Refer to the California Emission Control Warranty Statement supplied with your Product or contained in the engine manufacturer's documentation for details.

Countries Other than the United States or Canada

Customers who have purchased Toro products outside the United States or Canada should contact their Toro Distributor (Dealer) to obtain guarantee policies for your country, province, or state. If for any reason you are dissatisfied with your Distributor's service or have difficulty obtaining guarantee information, contact the Toro importer. If all other remedies fail, you may contact us at Toro Warranty Company.

Australian Consumer Law: Australian customers will find details relating to the Australian Consumer Law either inside the box or at your local Toro Dealer.