



Form No. 3390-372 Rev A

Count on it.

Parts Catalog

Nail Drag

Sand Pro® 2040Z Traction Unit

Model No. 08717—Serial No. 315000001 and Up



Ordering Replacement Parts

To order replacement parts, please supply the part number, the quantity, and the description of each part desired.

Understanding Reference Numbers

Each identified part in an illustration has a reference number. The reference number for a part also appears in the parts list, along with other information about the part.

This catalog uses two special reference number formats, one to indicate parts in a service assembly and another to indicate the quantity of a given part in an illustration.

Service Assembly Reference Numbers

Parts in service assemblies have reference numbers in the form a:b. The a represents the reference number of the entire service assembly and the b represents a sequential number unique to each part within the service assembly.

For example, a wheel assembly might be identified by reference number 6, the tire by 6:1, the valve by 6:2, and the wheel by 6:3. When you order the assembly identified by reference number 6, you receive all parts identified by reference numbers 6:1, 6:2, and 6:3. However, you may also order any part individually. Reference numbers of this type appear in illustration and in parts lists.

Reference Numbers Indicating Quantity

In an illustration, if a reference number indicates more than one part, the reference number has the form nX y. The n represents the quantity of the part, the X is the multiplication symbol, and the y represents the reference number.

For example, in an illustration, the reference number 2X 37 means that two of the parts identified by reference number 37 are indicated.

List of Abbreviations

AR: as required

ASM: assembly

BBC: blade brake control

BHTF: button head thread forming

CARR: carriage

CCW: counter clockwise

CW: clockwise

DEG: degrees

DPA: Dual Point Adjustment

ECM: electronic control module

EXT: external

FH: flat head

GA: gauge

HD: heavy-duty

HF: hex flange

HH: hex head

HHF: hex head flange

HHFTF: hex head flange thread forming

HJ: hex jam

HLH: hex lag head

HOC: height-of-cut

HP: high pressure

HSBH: hex socket button head

HSFH: hex socket flat head

HSH: hex socket head

HWH: hex washer head

HWHTF: hex washer head thread forming

HYD: hydraulic

LH: left hand

LP: low pressure

LPG: Liquefied Petroleum Gas

NI: nylon insert

NPTF: national pipe thread fine

PFH: phillips flat head

PPH: phillips pan head

PPHTF: phillips pan head thread forming

PRH: phillips round head

PTH: phillips truss head

PTO: power-take-off

RH: right hand

ROPS: roll-over protection system

RRB: rear roller brush

SFH: slotted fillister head

SHH: slotted hex head

SHWH: slotted hex washer head

SPH: slotted pan head

SQH: square head

SRH: slotted round head

STD: standard

TAP: self tapping

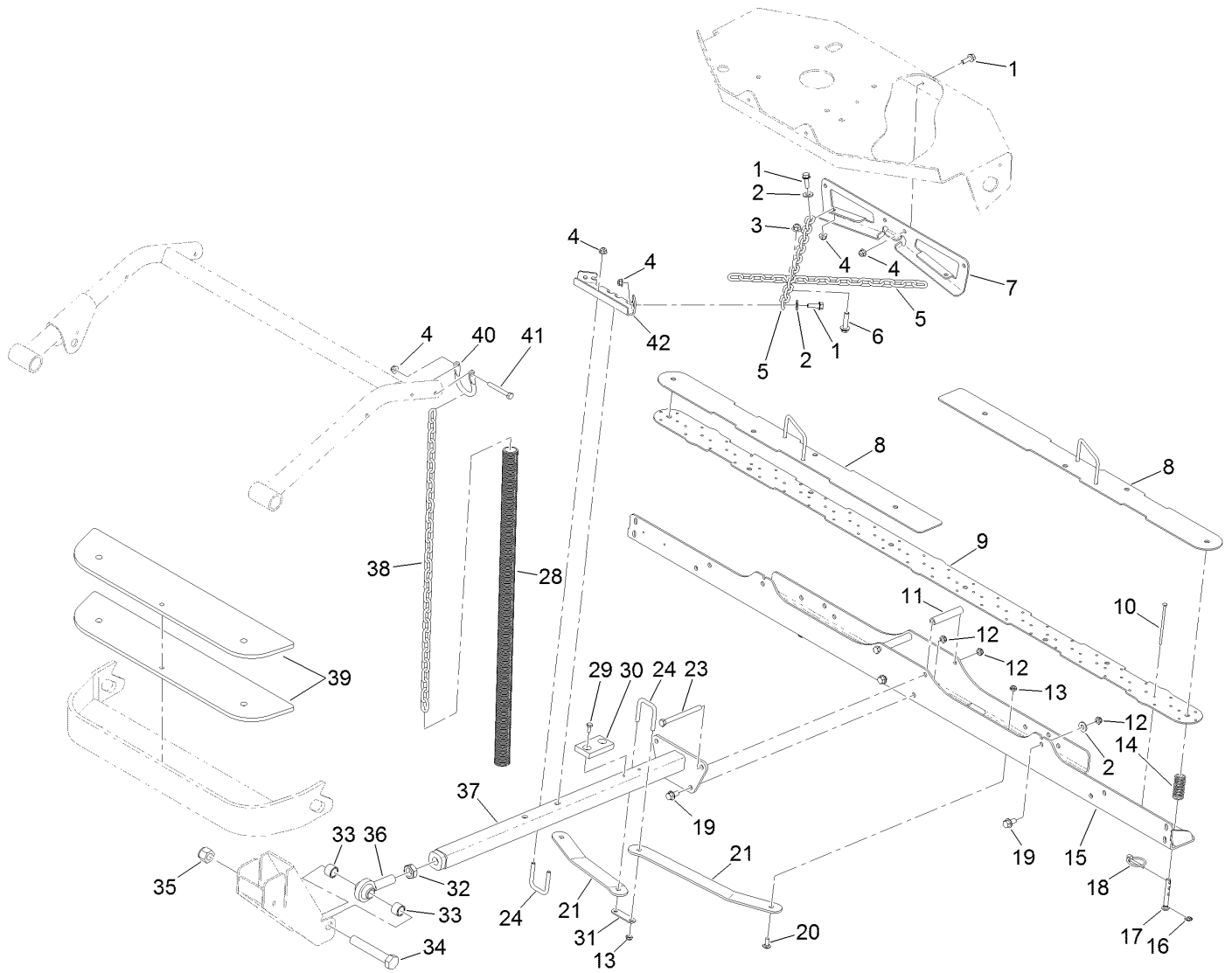
TTH: torx truss head

Contents

Drawbar and Frame Assembly..... 4

Groomer Assembly 6

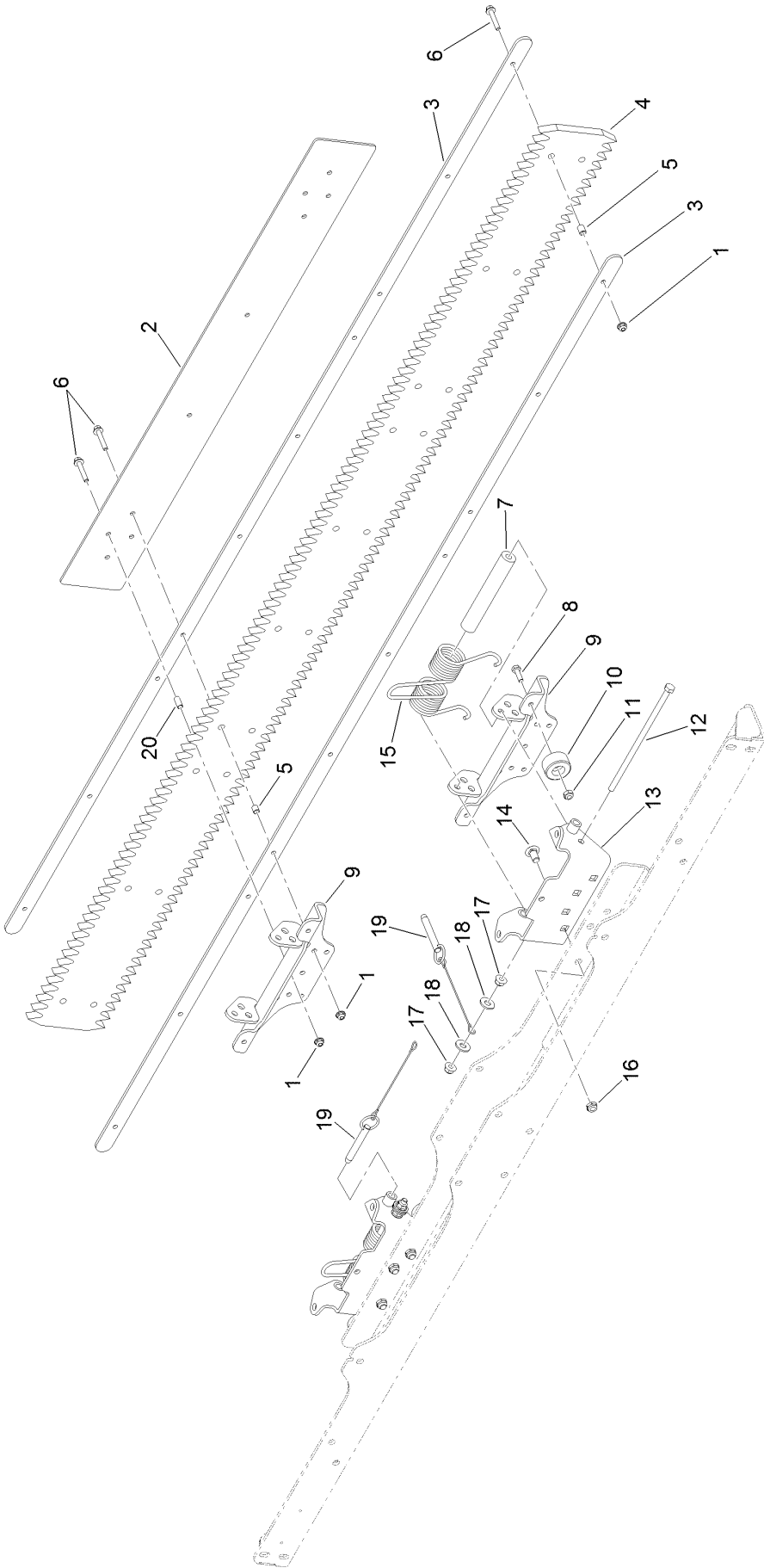
Drawbar and Frame Assembly



Drawbar and Frame Assembly (continued)

<i>Ref.</i>	<i>Part Number</i>	<i>Qty.</i>	<i>Description</i>	<i>Ref.</i>	<i>Part Number</i>	<i>Qty.</i>	<i>Description</i>
1	3234-29	8	Screw-HHF	20	3230-23	2	Screw-CARR
2	3256-3	6	Washer-Flat	21	127-0394-03	2	Bracket-Support
3	104-8301	1	Nut-Flange, NI	23	323-23	2	Screw-HH
4	104-8300	12	Nut-Flange, NI	24	301950	2	U-Bolt-Square
5	125-5127	2	Chain-Proof, 18 Link	28	127-7853	2	Sleeve-Chain
6	3234-18	1	Screw-HHF	29	114-9291	2	Screw-HH, Taptite
7	125-6468-01	1	Bracket-Stop, Hitch	30	93-9719	1	Block-Wear
8	125-5176-03	2	Plate-Top, Nail Drag	31	127-0396	1	Strap
9	125-5140-03	1	Plate-Nail	32	3220-7	1	Nut-Jam
10	114-0676	88	Nail	33	127-4138	2	Spacer
11	27-3680	2	Spacer-Mounting	34	328-8	1	Screw-HH
12	3296-59	6	Nut-Lock, NI	35	3296-51	1	Nut-Lock, NI
13	3296-47	4	Nut-Lock, NI	36	127-4139	1	Bearing-End, Rod
14	114-0677	8	Spring-Compression	37	125-5177-03	1	Drawbar
15	125-6402-03	1	Plate-Bottom	38	125-5122	2	Chain-Proof, 30 Link
16	32120-18	8	E-Ring	39	125-5133-03	2	Bumper-Weight
17	112-7696	8	Pin-Clevis	40	125-2446	2	Shackle
18	92-1298	8	Pin-Lynch	41	322-12	2	Screw-HH
19	3234-1	4	Screw-HHF	42	125-6476-03	1	Bracket-Stop, Tow

Groomer Assembly



Groomer Assembly (continued)

<i>Ref.</i>	<i>Part Number</i>	<i>Qty.</i>	<i>Description</i>	<i>Ref.</i>	<i>Part Number</i>	<i>Qty.</i>	<i>Description</i>
1	104-7201	12	Nut-HF	11	3296-16	4	Nut-Lock, NI
2	125-5142-03	1	Blade-Push, Rear	12	112-9557	2	Screw-HH
3	125-5145-03	2	Strap-Support, Rubber	13	130-7804-03	2	Nail Drag Bracket ASM
4	127-4123	1	Trowel-Rubber	14	3231-21	6	Screw-CARR
5	130-7842	10	Spacer	15	121-2368	2	Spring-Torsion
6	94-5781	12	Screw-HHF	16	3296-59	6	Nut-Lock, NI
7	105-4622	2	Spacer	17	104-8300	4	Nut-Flange, NI
8	321-5	4	Screw-HH	18	3256-3	4	Washer-Flat
9	127-4131-03	2	Bracket-Groomer	19	130-7825	2	Pin-Clevis
10	94-4548	4	Bumper-Recessed	20	108-4705	2	Spacer



Count on it.