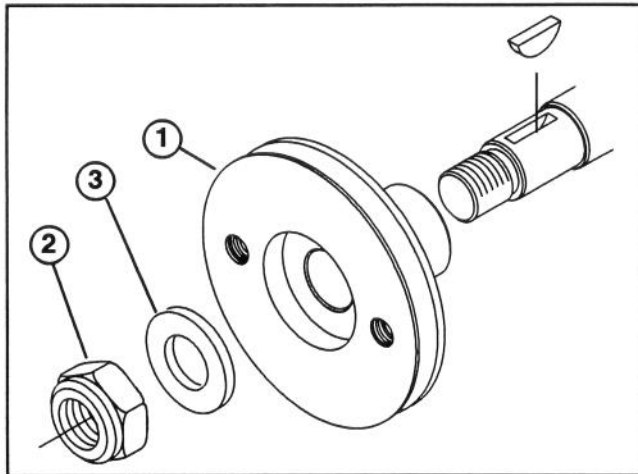


**TORO®**

MODEL NO. 07399

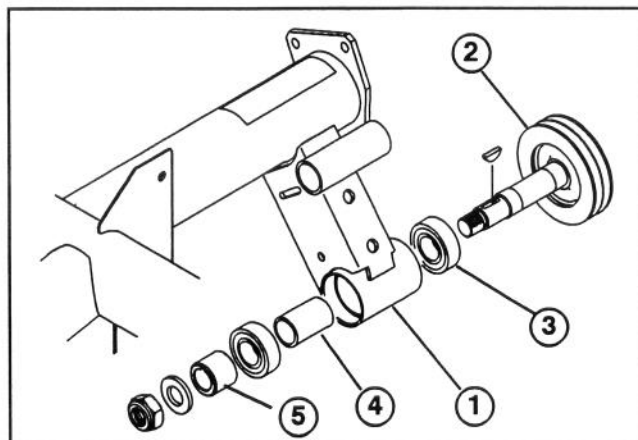
**INSTALLATION  
INSTRUCTIONS****AUXILIARY POWER UNIT KIT  
For Workman 3100**

1. Remove 1/3 bed if unit is so equipped. Raise full bed and secure with safety support.
2. Relieve tension on hydraulic pump drive belt and remove belt from engine pulley.
3. Remove locknut and washer securing engine pulley to crank shaft. Retain washer for reinstallation.

**Figure 1**

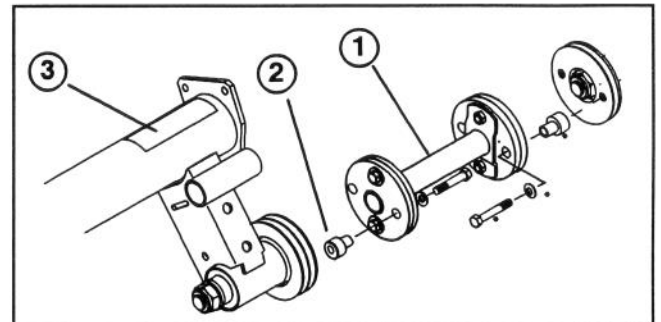
1. Engine pulley      2. Locknut      3. Washer

4. Install new engine pulley to crank shaft. Make sure key is in crank shaft key way.
5. Secure pulley to crank shaft with previously removed flat washer and new locknut.
6. Clean inside of jackshaft support to remove any debris that may have accumulated.

**Figure 2**

1. Jack shaft support      4. Bearing spacer  
2. Drive shaft w/pulley      5. Pulley hub  
3. Bearings

7. Install (2) bearings and bearing spacer into jack shaft support.
8. Apply a light coat of oil or Never Seeze to shaft of drive shaft w/pulley.
9. Insert drive shaft w/pulley into jackshaft support bearings.

**Figure 3**

1. Drive shaft w/ pulley  
2. Drive shaft  
3. Spacer

**Note:** Bearing spacer between jackshaft bearings in jackshaft support may have to be held in place when inserting drive shaft.

**Note:** Do not pound drive shaft into bearings. Drive shaft should slide into place with manual force or wiggling.

10. Install key to drive shaft.
  11. Install pulley hub to drive shaft, or install new generator drive pulley if required.
  12. Secure pulley to drive shaft with flat washer and locknut.
  13. Reinstall hydraulic pump drive belt onto new engine pulley and adjust to achieve correct belt tension..
  14. Install (2) long spacers into drive shaft couplers on each end of new drive shaft.
  15. Place drive belts on drive shaft pulley for installation of kit for which Auxiliary Power Unit (APU) is being installed.
- Note:** Do not operate vehicle with belts installed on APU drive without them being installed on the driven pulley of another attachment or severe damage to vehicle is possible and could cause serious injury.
16. Secure drive shaft couplings to engine pulley and drive shaft pulley with (4) 5/16-18 x 1-3/4" lg. capscrews and flatwashers.
  17. Affix caution decal to top of jackshaft support tube.