



Form No. 3390-560 Rev A

**Count on it.**

# Parts Catalog

## Spiker

### Greensmaster® 3300/3400 Series TriFlex® Traction Unit

Model No. 04723—Serial No. 315000001 and Up



# Ordering Replacement Parts

To order replacement parts, please supply the part number, the quantity, and the description of each part desired.

## Understanding Reference Numbers

Each identified part in an illustration has a reference number. The reference number for a part also appears in the parts list, along with other information about the part.

This catalog uses two special reference number formats, one to indicate parts in a service assembly and another to indicate the quantity of a given part in an illustration.

## Service Assembly Reference Numbers

Parts in service assemblies have reference numbers in the form a:b. The a represents the reference number of the entire service assembly and the b represents a sequential number unique to each part within the service assembly.

For example, a wheel assembly might be identified by reference number 6, the tire by 6:1, the valve by 6:2, and the wheel by 6:3. When you order the assembly identified by reference number 6, you receive all parts identified by reference numbers 6:1, 6:2, and 6:3. However, you may also order any part individually. Reference numbers of this type appear in illustration and in parts lists.

## Reference Numbers Indicating Quantity

In an illustration, if a reference number indicates more than one part, the reference number has the form nX y. The n represents the quantity of the part, the X is the multiplication symbol, and the y represents the reference number.

For example, in an illustration, the reference number 2X 37 means that two of the parts identified by reference number 37 are indicated.

# List of Abbreviations

**AR:** as required

**ASM:** assembly

**BBC:** blade brake control

**BHTF:** button head thread forming

**CARR:** carriage

**CCW:** counter clockwise

**CW:** clockwise

**DEG:** degrees

**DPA:** Dual Point Adjustment

**ECM:** electronic control module

**EXT:** external

**FH:** flat head

**GA:** gauge

**HD:** heavy-duty

**HF:** hex flange

**HH:** hex head

**HHF:** hex head flange

**HHFTF:** hex head flange thread forming

**HJ:** hex jam

**HLH:** hex lag head

**HOC:** height-of-cut

**HP:** high pressure

**HSBH:** hex socket button head

**HSFH:** hex socket flat head

**HSH:** hex socket head

**HWH:** hex washer head

**HWHTF:** hex washer head thread forming

**HYD:** hydraulic

**LH:** left hand

**LP:** low pressure

**LPG:** Liquefied Petroleum Gas

**NI:** nylon insert

**NPTF:** national pipe thread fine

**PFH:** phillips flat head

**PPH:** phillips pan head

**PPHTF:** phillips pan head thread forming

**PRH:** phillips round head

**PTH:** phillips truss head

**PTO:** power-take-off

**RH:** right hand

**ROPS:** roll-over protection system

**RRB:** rear roller brush

**SFH:** slotted fillister head

**SHH:** slotted hex head

**SHWH:** slotted hex washer head

**SPH:** slotted pan head

**SQH:** square head

**SRH:** slotted round head

**STD:** standard

**TAP:** self tapping

**TTH:** torx truss head

# Contents

Frame Assembly..... 4

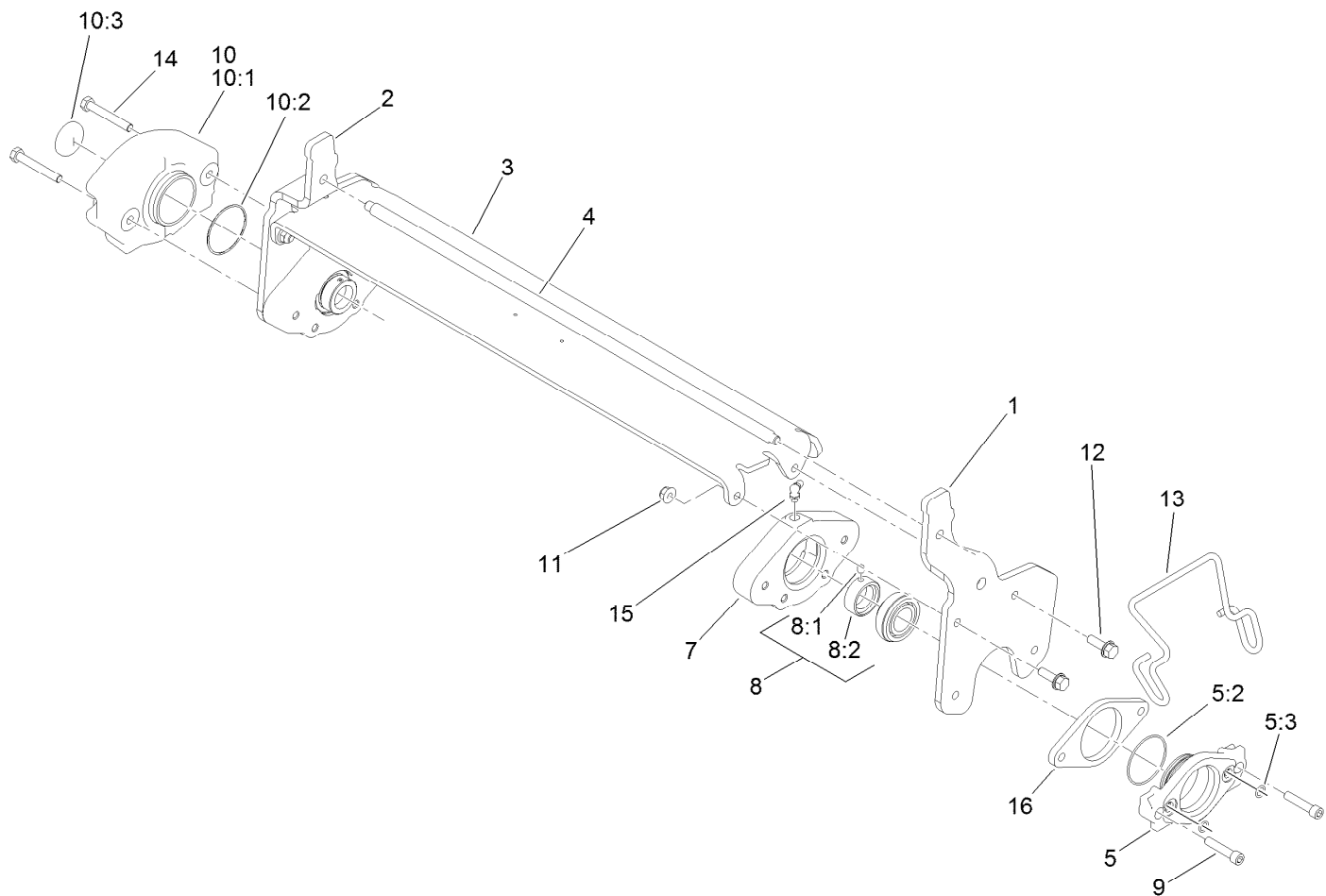
Spiker and Steel Roller Assembly ..... 5

Spiker Assembly No. 121-2245 ..... 6

Steel Roller Assembly No. 107-3509 ..... 7

Roller Seal Rebuild Kit Assembly No. 107-1594 ..... 8

Attachments and Accessories ..... 9



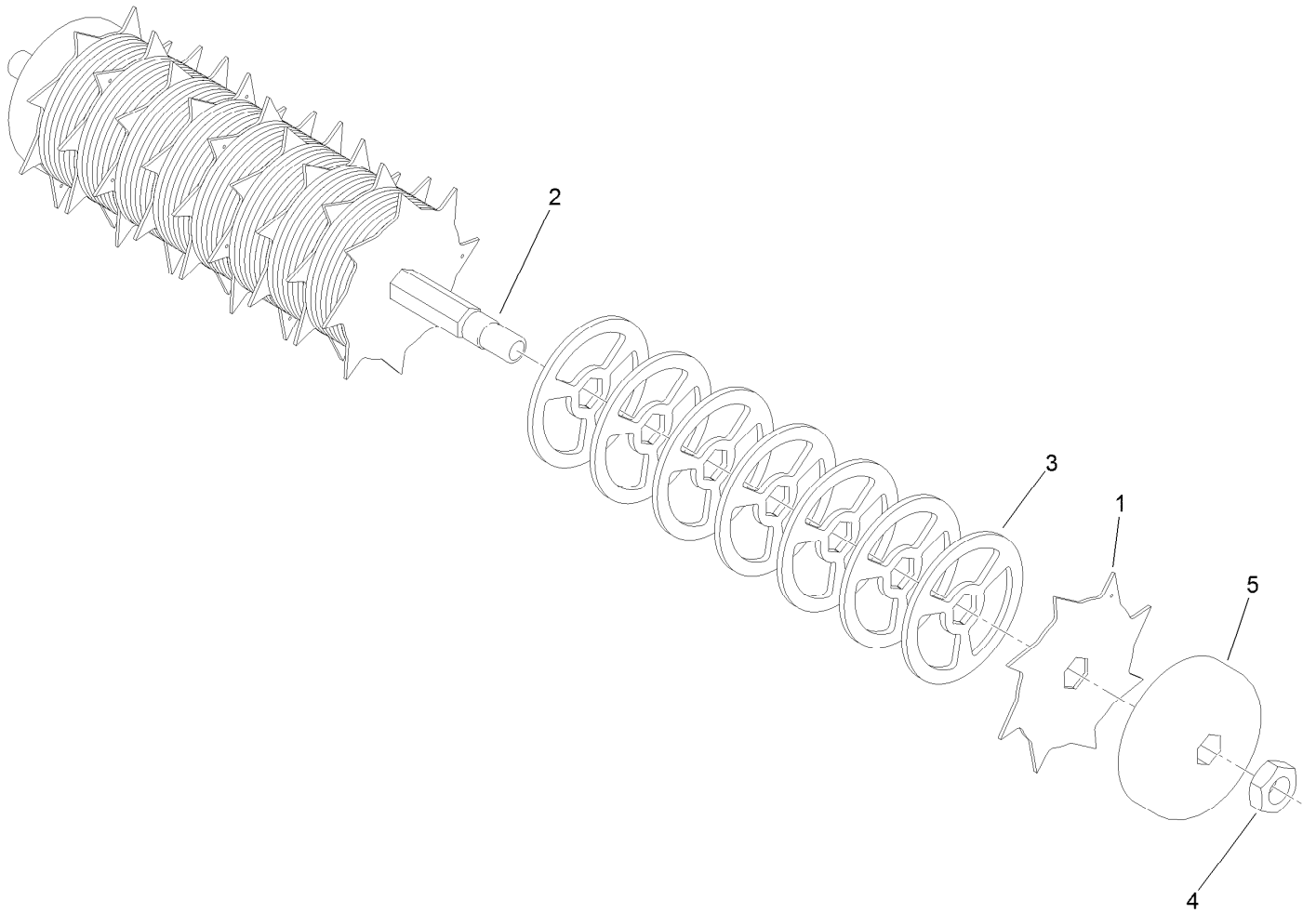
## Frame Assembly

Ref.	Part Number	Qty.	Description
1	131-2033-01	1	Arm-Pitch, LH
2	131-2034-01	1	Arm-Pitch, RH
3	121-2251-01	1	Shield-Top
4	121-2246	1	Brace-Frame
5	115-5227	1	Motor Adapter ASM
5:2	360-0398	1	O-Ring
5:3	237-22	2	O-Ring
7	121-2248	2	Housing-Bearing
8	94-3405	2	Bearing-Ball
8:1	3245-35	1	Screw-Set, HSH
8:2	251-77	1	Collar-Lock, Bearing

Ref.	Part Number	Qty.	Description
9	3274-83	2	Screw-HSH
10	115-3340	1	Weight ASM
10:1		1	Weight-Reel ●
10:2	360-0398	1	O-Ring
10:3	121-4609	1	Plug-Expansion
11	104-8300	4	Nut-Flange, NI
12	3234-29	4	Screw-HHF
13	117-6706	1	Clamp-Motor
14	322-11	2	Screw-HH
15	302-33	2	Fitting-Grease
16	121-5869-03	1	Spacer-Mount

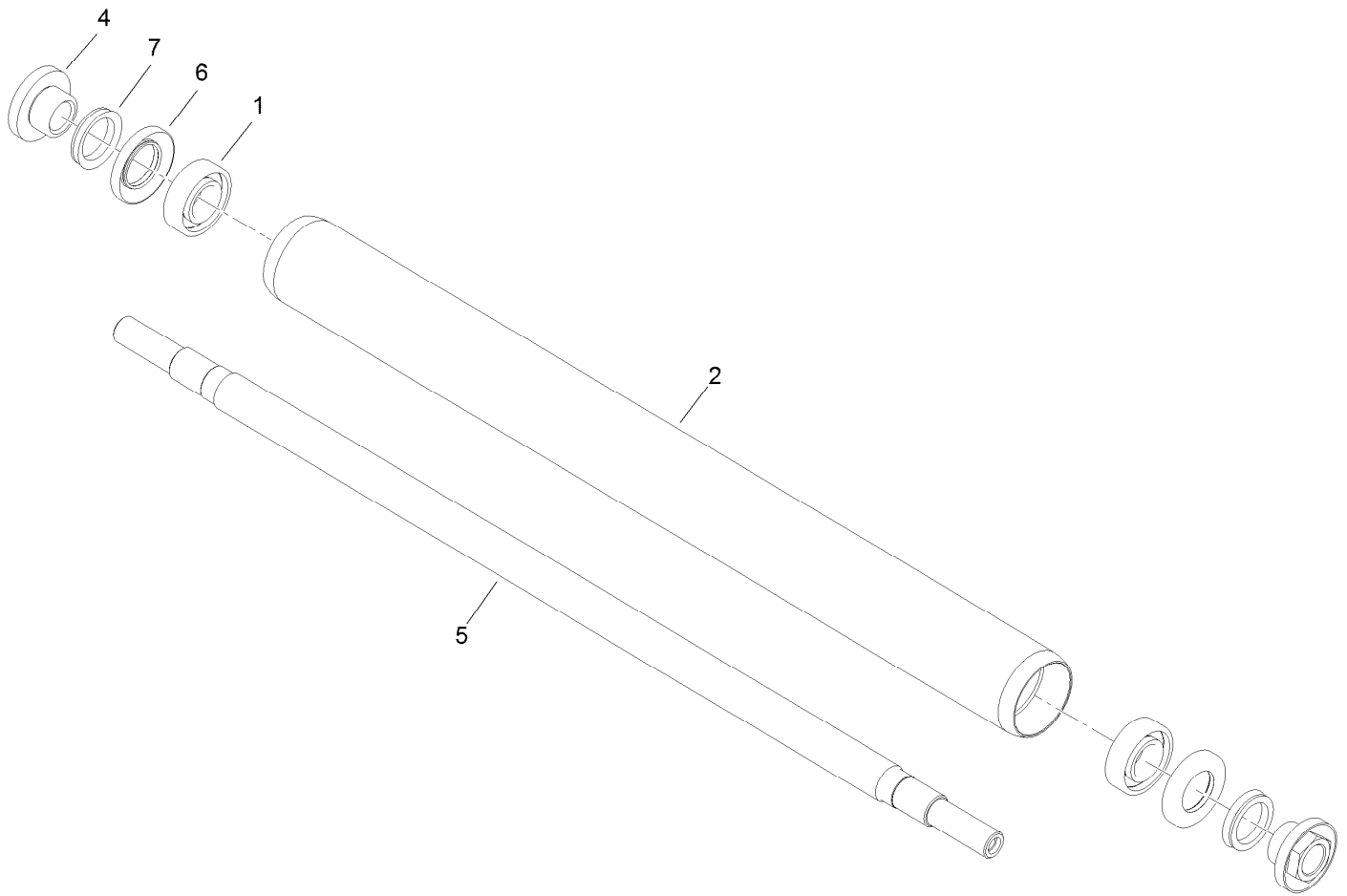
● Not serviced separately

3390-560A



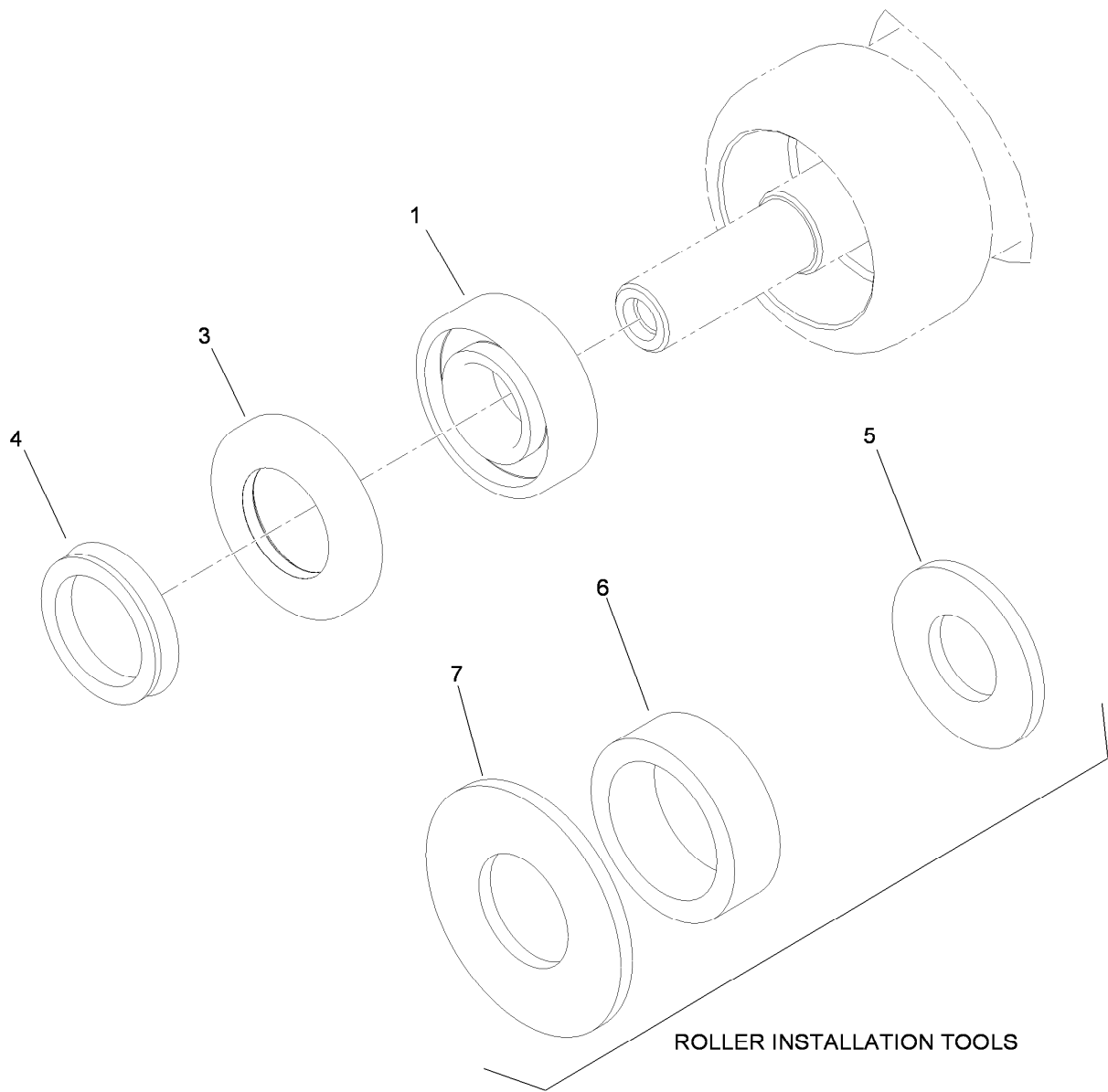
## Spiker Assembly No. 121-2245

Ref.	Part Number	Qty.	Description
1	121-2241	10	Blade
2	99-1611	1	Shaft
3	121-5879-03	63	Spacer-5.75 Diameter
4	67-5840	2	Nut-Jam
5	121-5888-03	2	Cap-End



## Steel Roller Assembly No. 107-3509

<i>Ref.</i>	<i>Part Number</i>	<i>Qty.</i>	<i>Description</i>
1	251-347	2	Bearing-Ball
2	107-3507	1	Roller-Steel
4	106-6939	2	Nut-Lock, Bearing
5	119-4090	1	Shaft-Roller
6	106-6941	2	Seal
7	106-6942	2	V-Ring



## Roller Seal Rebuild Kit Assembly No. 107-1594

<i>Ref.</i>	<i>Part Number</i>	<i>Qty.</i>	<i>Description</i>
1	251-347	2	Bearing-Ball
3	106-6941	2	Seal
4	106-6942	2	V-Ring
5	107-8133	2	Washer-Flat
6	107-3505	2	Spacer-Tool, Roller
7	104-6126	2	Washer-Flat



# Attachments and Accessories

For 04723 Spiker Greensmaster 3300/3400 Series TriFlex Traction Unit

Product Name	Model/Part
Roller Seal Replacement (Qty 1) .....	107-1594

**Notes:**

**Notes:**



**Count on it.**