



CE Kit for 62in and 72in Base Mower Decks

Groundsmaster® 7200, 7210, or 360 Traction Unit

Model No. 30683

Model No. 30685

Installation Instructions

⚠ WARNING

CALIFORNIA Proposition 65 Warning

This product contains a chemical or chemicals known to the State of California to cause cancer, birth defects, or reproductive harm.

Installation

Loose Parts

Use the chart below to verify that all parts have been shipped.

Procedure	Description	Qty.	Use
1	No parts required	–	Prepare the mower.
2	Pulley shield Push nut	1 1	Mount the pulley shield.
3	Drive shaft cover Lock washer, 3/8 inch Hex head screw, 3/8 x 3/4 inch	1 2 2	Mount the drive shaft cover.
4	Pivot bracket Lock washer, 3/8 inch Hex head screw, 3/8 x 3/4 inch	1 2 2	Mount the pivot bracket.
5	Shield support (Groundsmaster 7210) Shield support (Groundsmaster 360) Hex head screw, 5/16 x 4 inch Washer, .391 I.D. Flange nut, 5/16 inch	1 1 1 1 1	Mount the shield support.
6	Drive shaft shield Shoulder screw Flat washer, .469 I.D. Push nut Retainer nut	1 1 1 1 1	Mount the drive shaft shield.
7	Inner deck cover Grommet Hex flange screw, 5/16 x 3/4 inch Push nut	1 2 1 1	Mount the inner deck cover.



Procedure	Description	Qty.	Use
8	Left deck cover	1	Mount the left deck cover.
	Grommet	3	
	Hex flange screw, 5/16 x 3/4 inch	1	
	Push nut	1	
9	Right deck cover	1	Mount the right deck cover.
	Cover support	1	
	Grommet	2	
	Hex flange screw, 5/16 x 3/4 inch	3	
	Flange nut, 5/16 inch	2	
	Push nut	1	

Media and Additional Parts

Description	Qty.	Use
Installation instructions	1	Reference for installation of kit
Parts catalog	1	Use to reference part numbers

1

Preparing the Mower

No Parts Required

Procedure

1. Lower the cutting unit to the 1-inch height-of-cut setting, move the throttle lever to the Slow position, stop the engine, set the parking brake, and remove the ignition key.
2. Remove the 2 belt covers from the top of the cutting unit and discard the covers.
3. Remove any debris from the top of the cutting unit.

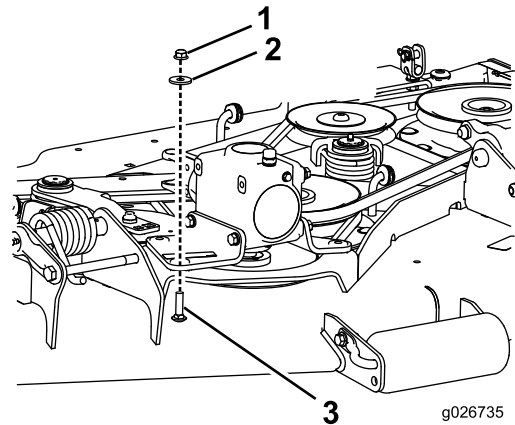


Figure 1

1. Nut (2)
 2. Washer (2)
 3. Carriage bolt
-
2. Using the nuts removed in the previous step, mount the pulley shield to the gear box mounting brackets (Figure 2).

2

Mounting the Pulley Shield

Parts needed for this procedure:

1	Pulley shield
1	Push nut

Procedure

1. Remove the nuts and washers from the carriage bolts that secure the front of the gear box mounting brackets to the mower deck (Figure 1).

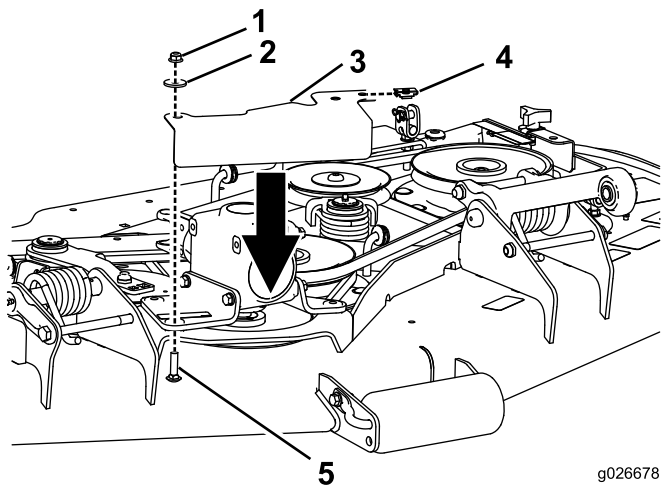


Figure 2

g026678

1. Nut (2)
2. Washer (2)
3. Pulley shield
4. Retainer nut
5. Carriage bolt

3. Install the retainer nut over the empty hole in the pivot pulley shield ([Figure 2](#)).

Note: The retainer nut will be used later in the installation of the center cover.

3

Mounting the Drive Shaft Cover

Not required on Groundsmaster 360

Parts needed for this procedure:

1	Drive shaft cover
2	Lock washer, 3/8 inch
2	Hex head screw, 3/8 x 3/4 inch

Procedure

1. Mount the drive shaft cover to the left side of the gear box with 2 lock washers and hex head screws.
2. Position the drive shaft cover on the gear box as shown in [Figure 3](#).

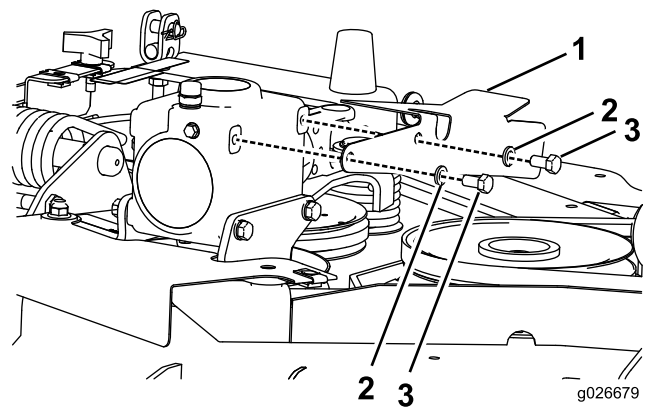


Figure 3

g026679

1. Drive shaft cover
2. Lockwasher (2)
3. Hex head screw (2)

4

Mounting the Pivot Bracket

Parts needed for this procedure:

1	Pivot bracket
2	Lock washer, 3/8 inch
2	Hex head screw, 3/8 x 3/4 inch

Procedure

1. Mount the pivot bracket to the right side of the gear box with 2 lock washers and hex head screws.
2. Position the pivot bracket on the gear box as shown in [Figure 4](#).

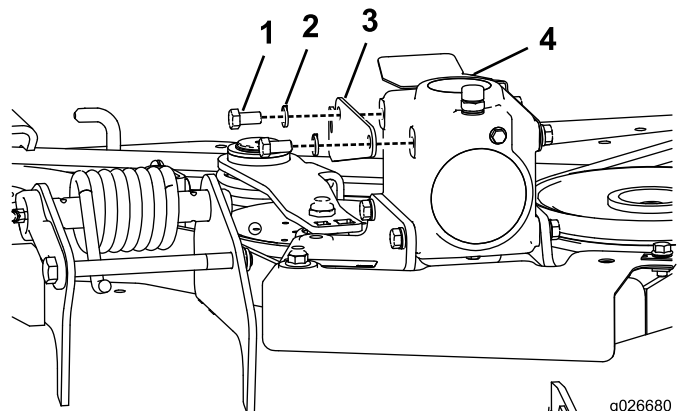


Figure 4

g026680

1. Hex head screw (2)
2. Lockwasher (2)
3. Pivot bracket
4. Gear box

5

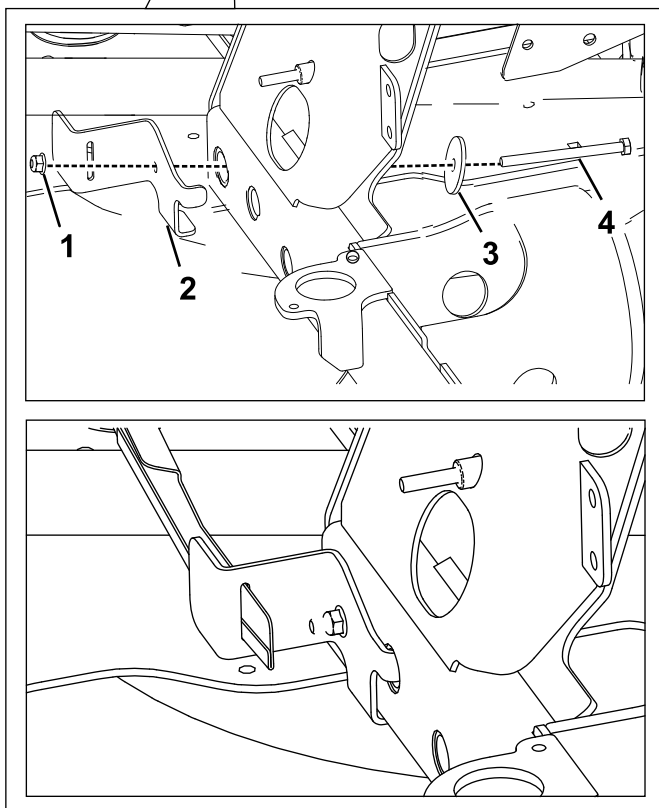
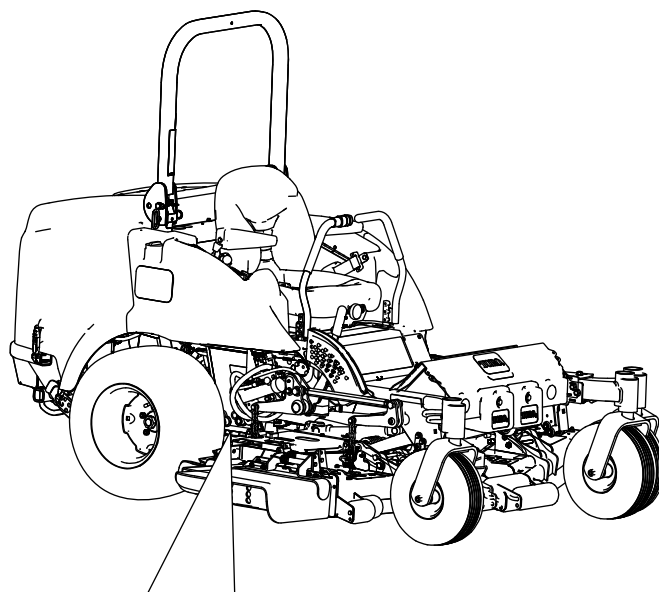
Mounting the Shield Support

Parts needed for this procedure:

1	Shield support (Groundsmaster 7210)
1	Shield support (Groundsmaster 360)
1	Hex head screw, 5/16 x 4 inch
1	Washer, .391 I.D.
1	Flange nut, 5/16 inch

For the Groundsmaster 7210

Install the shield support to the right side of the frame with a hex head screw, washer and flange nut. Use the large hole in the front of the frame for the installation. The tab on the shield goes into the small hole in the frame ([Figure 5](#)).



g026681

Figure 5

- | | |
|-------------------|-------------------|
| 1. Flange nut | 3. Washer |
| 2. Shield support | 4. Hex head screw |

For the Groundsmaster 360

1. On the right side of the machine, remove the nut and bolt securing the rear frame to the front frame ([Figure 6](#)).

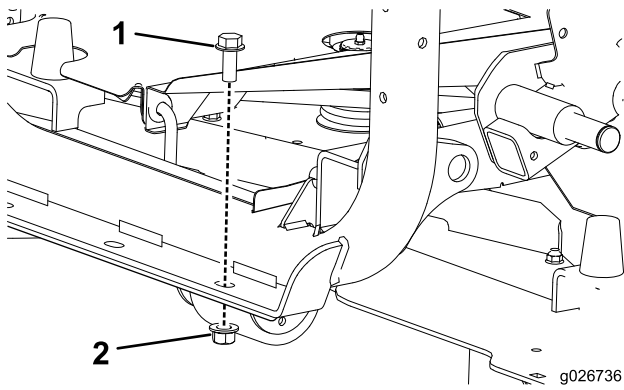


Figure 6

1. Bolt 2. Nut

2. Install the shield support to the right side of the frame with the nut and bolt, removed in the previous step ([Figure 7](#)).

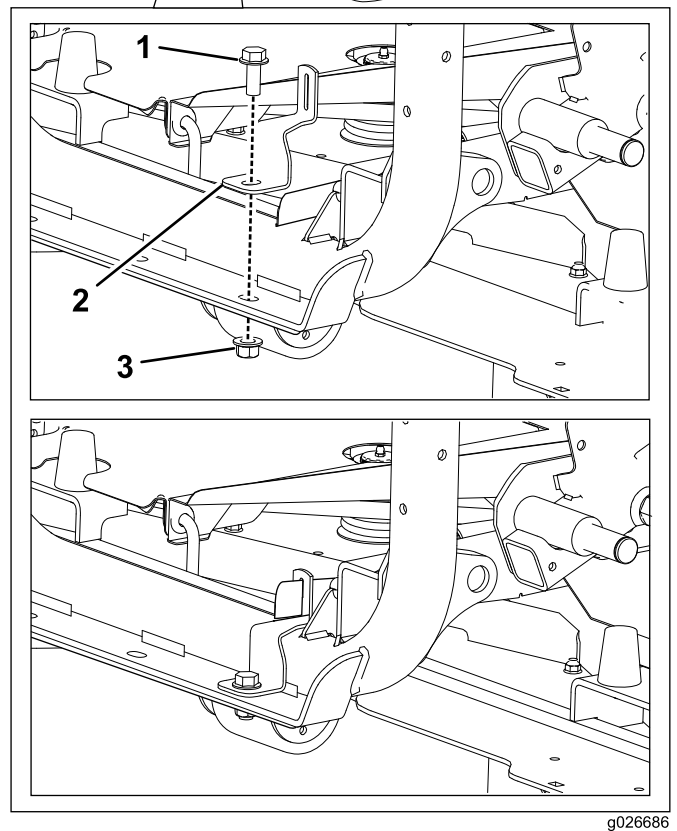
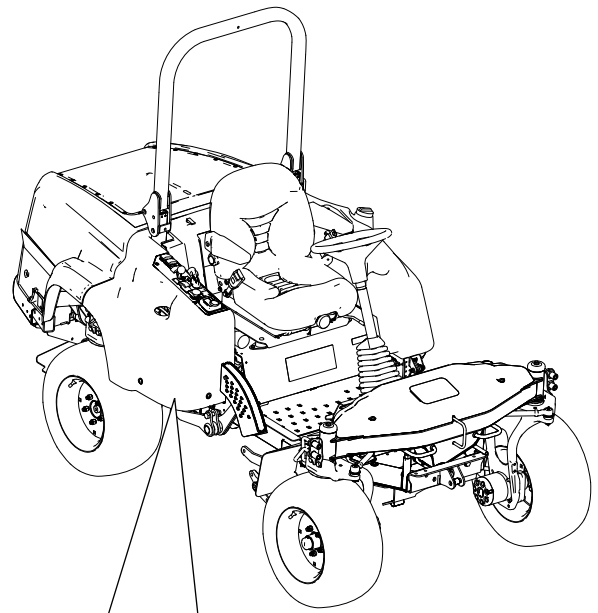


Figure 7

1. Bolt 3. Nut
2. Shield support

6

Mounting the Drive Shaft Shield

Parts needed for this procedure:

1	Drive shaft shield
1	Shoulder screw
1	Flat washer, .469 I.D.
1	Push nut
1	Retainer nut

Procedure

1. Install the retainer nut over the empty hole in the pivot bracket (Figure 8).
2. Install the shoulder screw, flat washer and push nut to the drive shaft shield (Figure 8).

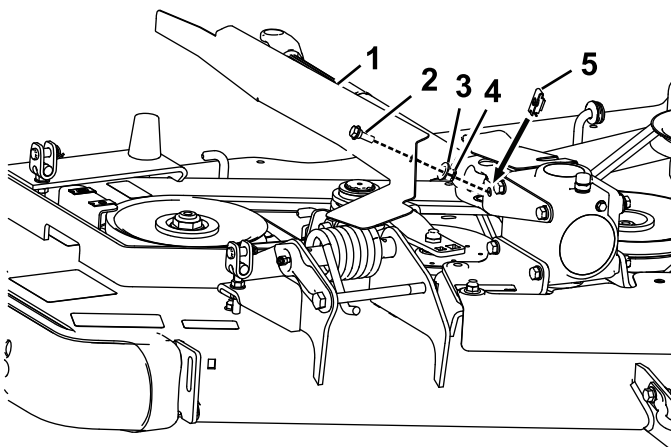


Figure 8

- | | |
|-----------------------|-----------------|
| 1. Drive shaft shield | 4. Push nut |
| 2. Shoulder screw | 5. Retainer nut |
| 3. Flat washer | |

3. While inserting the end of the drive shaft shield into the shield support, which was assembled in procedure 5, secure the other end of the shield to the retainer nut in the pivot bracket with the shoulder screw (Figure 8).

7

Mounting the Inner Deck Cover

Parts needed for this procedure:

1	Inner deck cover
2	Grommet
1	Hex flange screw, 5/16 x 3/4 inch
1	Push nut

Procedure

1. Insert a grommet into each hole in the side of the inner cover (Figure 9).

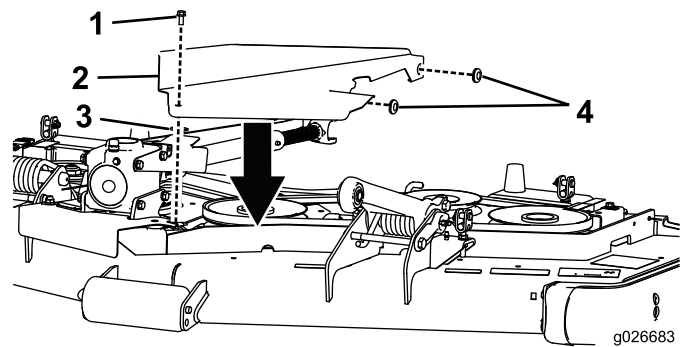


Figure 9

- | | |
|---------------------|----------------|
| 1. Hex flange screw | 3. Push nut |
| 2. Inner cover | 4. Grommet (2) |

2. Install the hex flange screw and push nut to the inner cover (Figure 9).
3. Hook the side of the inner cover over the deck pins while securing the other end of the cover to the retainer nut in the pulley shield with the previously installed hex flange screw (Figure 9).

8

Mounting the Left Deck Cover

Parts needed for this procedure:

1	Left deck cover
3	Grommet
1	Hex flange screw, 5/16 x 3/4 inch
1	Push nut

Procedure

1. Insert a grommet into each of the 3 holes in the left deck cover (Figure 10).

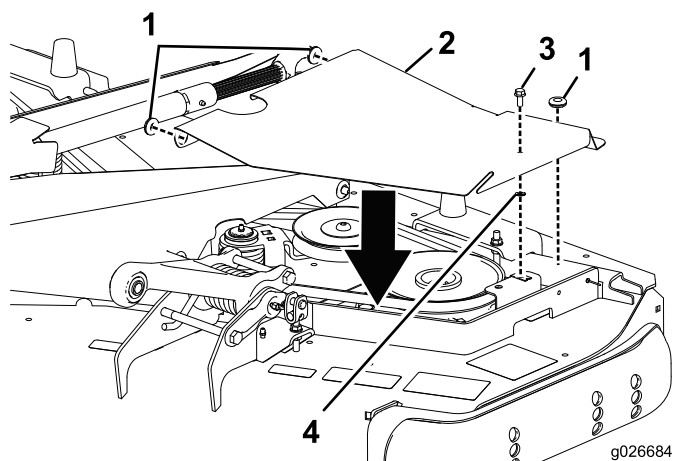


Figure 10

1. Grommet (3)
2. Left deck cover
3. Hex flange screw
4. Push nut

2. Install the hex flange screw and push nut to the cover (Figure 10).
3. Insert the cover onto the deck pins.
4. Secure the cover to the existing retainer nut in the deck with the previously installed hex flange screw (Figure 10).

9

Mounting the Right Deck Cover

Parts needed for this procedure:

1	Right deck cover
1	Cover support
2	Grommet
3	Hex flange screw, 5/16 x 3/4 inch
2	Flange nut, 5/16 inch
1	Push nut

Procedure

1. Insert a grommet into each of the 2 holes in the cover support (Figure 11).

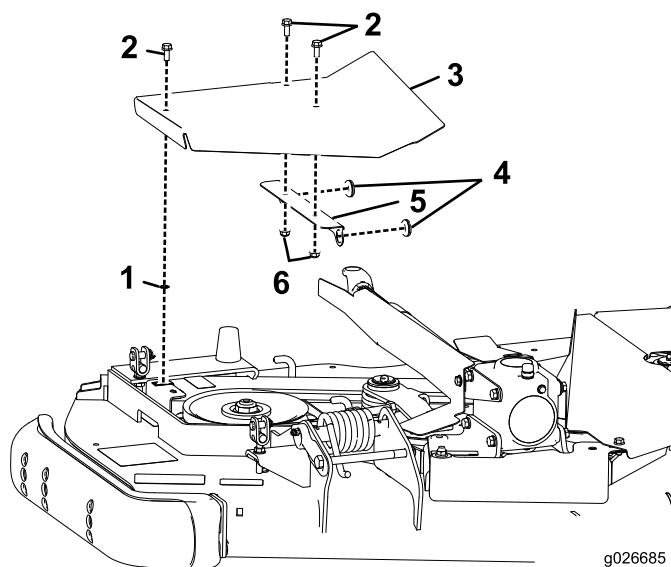


Figure 11

1. Push nut
2. Hex flange screw (3)
3. Right deck cover
4. Grommet (3)
5. Cover support
6. Flange nut

2. Mount the cover support to the right deck cover with 2 hex flange screws and flange nuts (Figure 11).
3. Install the hex flange screw and push nut to the cover (Figure 11).
4. Insert the cover onto the deck pins.
5. Secure the cover to the existing retainer nut in the deck with the previously installed hex flange screw (Figure 11).

Declaration of Incorporation

Model No.	Serial No.	Product Description	Invoice Description	General Description	Directive
30683	None and Up	CE kit for 62" base mower deck	CE KIT 62IN DECK WITH FRENCH GUARDS	Traction Unit	2006/42/EC
30685	None and Up	CE kit for 72" base mower deck	CE KIT 72IN DECK WITH FRENCH GUARDS	Multi-Purpose Machine	2006/42/EC

Relevant technical documentation has been compiled as required per Part B of Annex VII of 2006/42/EC.

We will undertake to transmit, in response to requests by national authorities, relevant information on this partly completed machinery. The method of transmission shall be electronic transmittal.

This machinery shall not be put into service until incorporated into approved Toro models as indicated on the associated Declaration of Conformity and in accordance with all instructions, whereby it can be declared in conformity with all relevant Directives.

Certified:



David Klis
Sr. Engineering Manager
8111 Lyndale Ave. South
Bloomington, MN 55420, USA
September 29, 2014

EU Technical Contact:

Peter Tetteroo
Toro Europe NV
B-2260 Oevel-Westerloo
Belgium

Tel. 0032 14 562960
Fax 0032 14 581911