



Pivoting Hose Reel Finishing Kit

2014 and Before Multi-Pro 5800 Turf Sprayer

Model No. 131-3291

Form No. 3391-541 Rev A

Installation Instructions

The Pivoting Hose Reel Finishing Kit is a dedicated attachment for a turf spray application vehicle and is intended to be used by professional, hired operators in commercial applications. It is primarily designed for spraying on well-maintained lawns in parks, golf courses, sports fields, and on commercial grounds.

This kit is used to install the Pivoting Hose Reel Kit on machine models 41593, 41593N, and 41594 built from 2014 and before.

This product complies with all relevant European directives, for details please see the separate product specific Declaration of Conformity (DOC) sheet.

Read this manual carefully to learn how to operate and maintain your product properly. The information in this manual can help you and others avoid injury and product damage. Although Toro designs and produces safe products, you are responsible for operating the product properly and safely.

You may contact Toro directly at www.Toro.com for product and accessory information, help finding a dealer, or to register your product.

Preparing the Machine

1. Ensure that the machine is empty of all fluids.

Note: If chemicals have been used in the machine, flush the system thoroughly with clean water; refer to your vehicle *Operator's Manual* for instructions.

2. Park the machine on a flat area, set the parking brake, stop the pump, stop the engine, and remove the ignition key.
3. Disconnect the negative battery terminal from the battery.

Installing the Valve Assembly

1. Disconnect the pressure transducer wire from the pressure-gauge port.
2. Remove the 4 long bolts securing the pressure-gauge port to the boom valves and discard them (Figure 1). Retain the flat washers and locknuts.

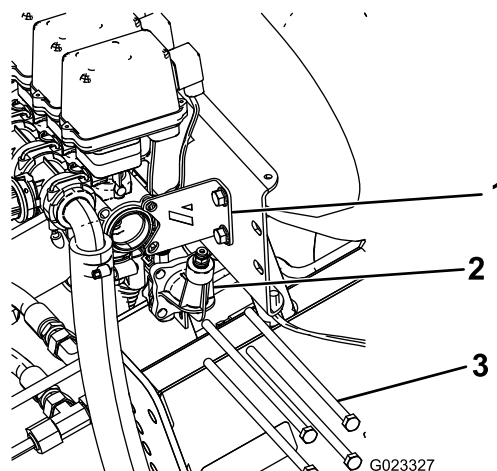


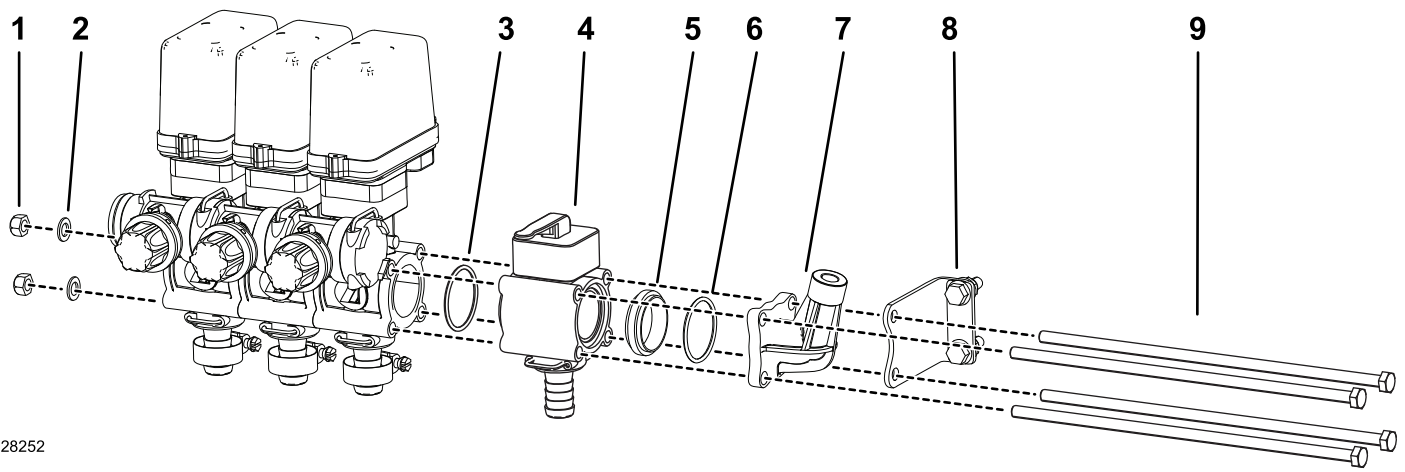
Figure 1

- | | |
|------------------------|--------------|
| 1. Stabilizing bracket | 3. Long bolt |
| 2. Pressure-gauge port | |

3. Remove and retain the 2 bolts and nuts securing the stabilizing bracket to the valve assembly (Figure 1).
4. Install the O-ring, the new control valve, and the previously removed pressure-gauge port, and stabilizing bracket using the 4 long bolts; refer to Figure 2.

Note: The bolts should pass through the valve bodies and through the bracket on the opposing side.



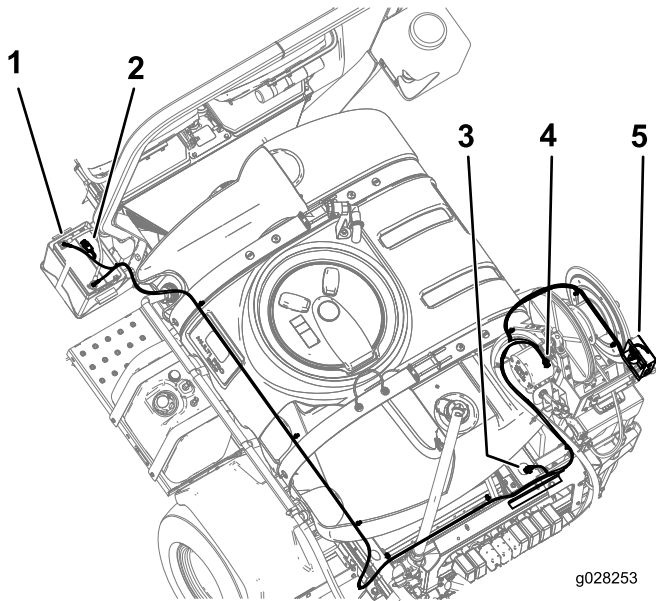


g028252

Figure 2

- | | | |
|-------------|----------------------|------------------------|
| 1. Locknuts | 4. Control valve | 7. Pressure-gauge port |
| 2. Washers | 5. Adapter, existing | 8. Stabilizing bracket |
| 3. O-ring | 6. O-ring, existing | 9. Long bolts (M8) |

-
5. Secure the bolts with the washers and locknuts removed previously.
 6. Torque the long bolts to 272-373 N-cm (24-30 in-lb).
 7. Secure the bolts of the mounting bracket to the mounting rail.
 8. Route the wiring harness as shown in [Figure 3](#).



g028253

Figure 3

- | | |
|----------------------------------|--------------------------------|
| 1. Battery terminals | 4. Connector to the reel motor |
| 2. Fuse connector | 5. Connector to the switch box |
| 3. Connector to the main harness | |