



**Count on it.**

**Parts Catalog**

**Commercial Walk-Behind Mower  
Fixed Deck, T-Bar, Gear Drive with 32in  
Cutting Unit**

Model No. 30672—Serial No. 315000001 and Up



# Ordering Replacement Parts

To order replacement parts, please supply the part number, the quantity, and the description of each part desired.

## Understanding Reference Numbers

Each identified part in an illustration has a reference number. The reference number for a part also appears in the parts list, along with other information about the part.

This catalog uses two special reference number formats, one to indicate parts in a service assembly and another to indicate the quantity of a given part in an illustration.

## Service Assembly Reference Numbers

Parts in service assemblies have reference numbers in the form a:b. The a represents the reference number of the entire service assembly and the b represents a sequential number unique to each part within the service assembly.

For example, a wheel assembly might be identified by reference number 6, the tire by 6:1, the valve by 6:2, and the wheel by 6:3. When you order the assembly identified by reference number 6, you receive all parts identified by reference numbers 6:1, 6:2, and 6:3. However, you may also order any part individually. Reference numbers of this type appear in illustration and in parts lists.

## Reference Numbers Indicating Quantity

In an illustration, if a reference number indicates more than one part, the reference number has the form nX y. The n represents the quantity of the part, the X is the multiplication symbol, and the y represents the reference number.

For example, in an illustration, the reference number 2X 37 means that two of the parts identified by reference number 37 are indicated.

# List of Abbreviations

**AR:** as required

**ASM:** assembly

**BBC:** blade brake control

**BHTF:** button head thread forming

**CARR:** carriage

**CCW:** counter clockwise

**CW:** clockwise

**DEG:** degrees

**DPA:** Dual Point Adjustment

**ECM:** electronic control module

**EXT:** external

**FH:** flat head

**GA:** gauge

**HD:** heavy-duty

**HF:** hex flange

**HH:** hex head

**HHF:** hex head flange

**HHFTF:** hex head flange thread forming

**HJ:** hex jam

**HLH:** hex lag head

**HOC:** height-of-cut

**HP:** high pressure

**HSBH:** hex socket button head

**HSFH:** hex socket flat head

**HSH:** hex socket head

**HWH:** hex washer head

**HWHTF:** hex washer head thread forming

**HYD:** hydraulic

**LH:** left hand

**LP:** low pressure

**LPG:** Liquefied Petroleum Gas

**NI:** nylon insert

**NPTF:** national pipe thread fine

**PFH:** phillips flat head

**PPH:** phillips pan head

**PPHTF:** phillips pan head thread forming

**PRH:** phillips round head

**PTH:** phillips truss head

**PTO:** power-take-off

**RH:** right hand

**ROPS:** roll-over protection system

**RRB:** rear roller brush

**SFH:** slotted fillister head

**SHH:** slotted hex head

**SHWH:** slotted hex washer head

**SPH:** slotted pan head

**SQH:** square head

**SRH:** slotted round head

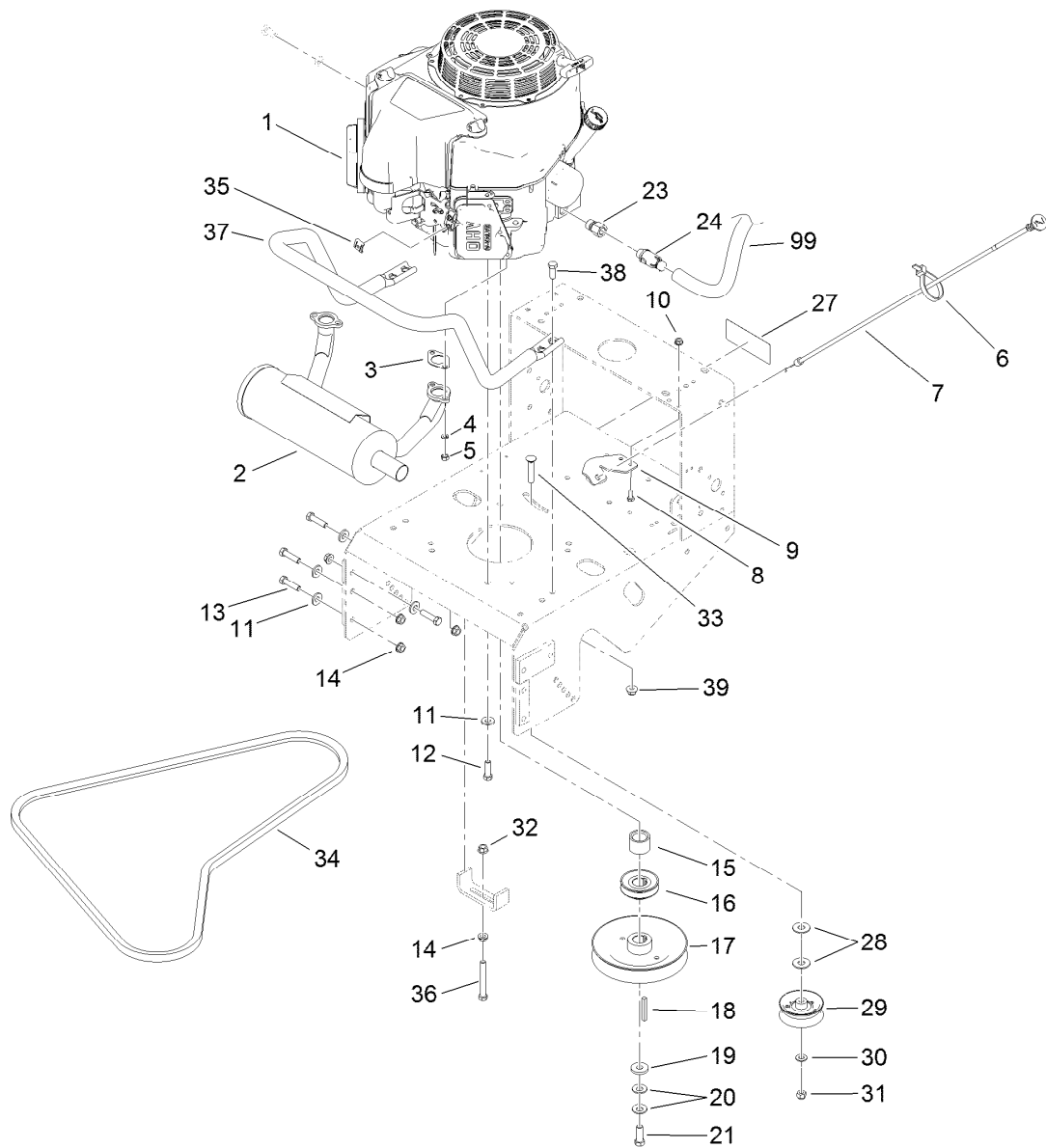
**STD:** standard

**TAP:** self tapping

**TTH:** torx truss head

# Contents

|  |    |
|--|----|
| Engine and Exhaust Assembly.....           | 4  |
| Fuel System Assembly .....                 | 5  |
| Frame and Transmission Assembly .....      | 6  |
| Drive Wheel and Brake Assembly .....       | 7  |
| Handle and Control Assembly .....          | 9  |
| Wire Harness Assembly .....                | 10 |
| Deck and Shield Assembly .....             | 11 |
| Deck Decal Assembly No. 110-6901.....      | 12 |
| Deflector Assembly No. 119-6529.....       | 13 |
| Idler Arm and Caster Wheel Assembly.....   | 14 |
| Spindle and Blade Assembly .....           | 16 |
| Cutter Housing Assembly No. 107-4065 ..... | 17 |
| Attachments and Accessories .....          | 18 |

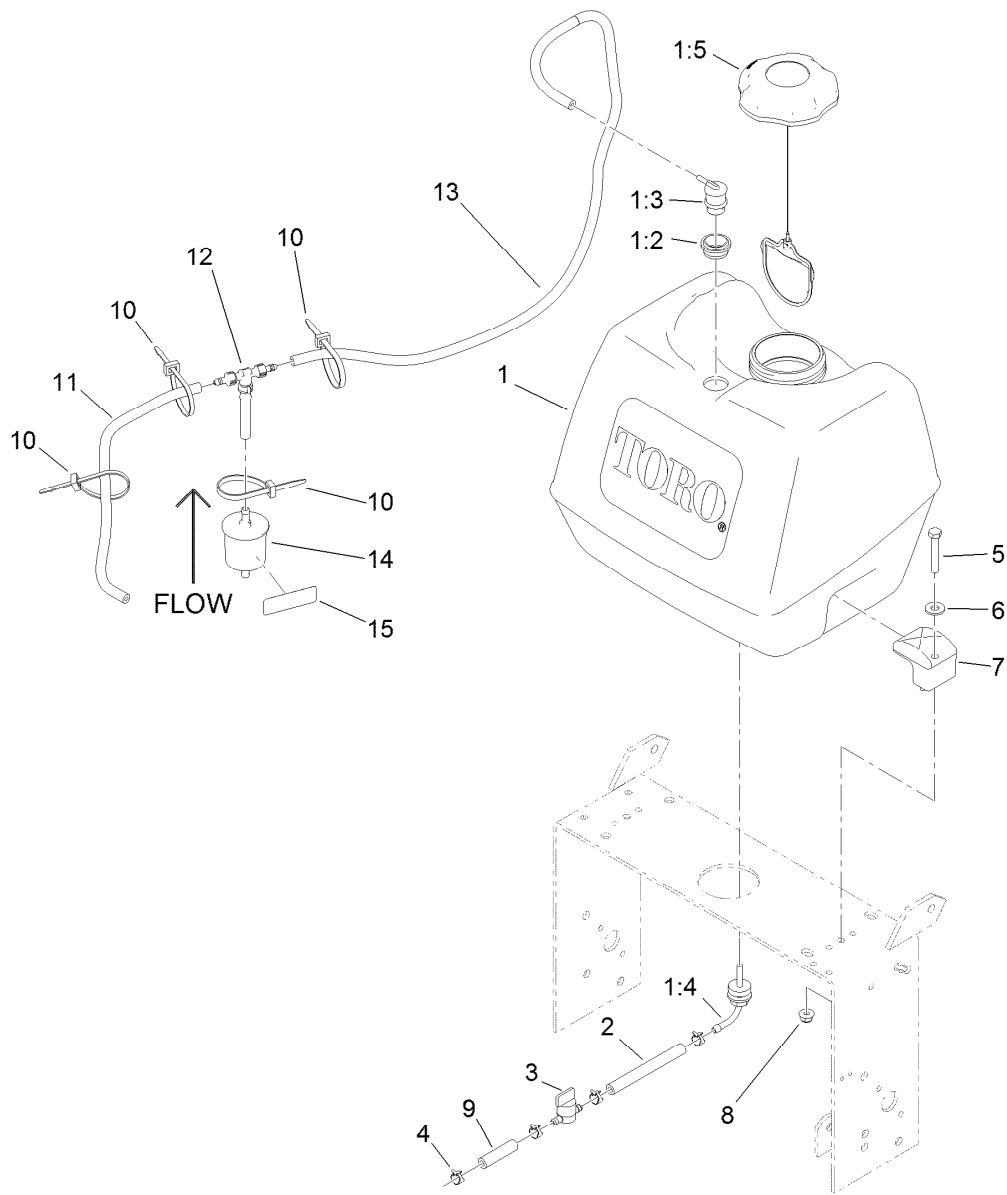


## Engine and Exhaust Assembly

| Ref. | Part Number | Qty. | Description                     | Ref. | Part Number | Qty. | Description          |
|------|-------------|------|---------------------------------|------|-------------|------|----------------------|
| 1    |             | 1    | Engine-Kawasaki, Fs481V-As06 ●■ | 19   | 1-373034    | 1    | Washer               |
| 2    | 116-3734    | 1    | Muffler-Horizontal, Offset      | 20   | 1-603610    | 2    | Washer-Spring        |
| 3    | 1-653313    | 2    | Gasket-Exhaust                  | 21   | 116-3702    | 1    | Screw-HH             |
| 4    | 114-3550    | 4    | Washer-Lock, Spring             | 23   | 103-1966    | 1    | Adapter              |
| 5    | 114-3549    | 4    | Nut                             | 24   | 120-4321    | 1    | Valve-Drain, Oil     |
| 6    | 1-303287    | 1    | Tie-Cable                       | 27   | 126-1400    | 1    | Decal-Warning, Sulky |
| 7    | 103-1796    | 1    | Cable-Choke                     | 28   | 3256-5      | 2    | Washer-Flat          |
| 8    | 321-3       | 2    | Screw-HH                        | 29   | 130-8362    | 1    | Pulley-Idler, Flat   |
| 9    | 103-1797-01 | 1    | Bracket-Cable, Choke            | 30   | 3256-24     | 1    | Washer-Flat          |
| 10   | 32128-33    | 2    | Nut-HF                          | 31   | 3296-39     | 1    | Nut-Lock, NI         |
| 11   | 98-5975     | 12   | Washer-Belleville               | 32   | 32128-21    | 1    | Nut-HF               |
| 12   | 323-7       | 4    | Screw-HH                        | 33   | 3231-6      | 1    | Screw-CARR           |
| 13   | 323-8       | 8    | Screw-HH                        | 34   | 1-323745    | 1    | Belt-V               |
| 14   | 3290-357    | 9    | Nut-HHF, Whiz                   | 35   | 81-1690     | 1    | Clamp-Cable          |
| 15   | 1-633453    | 1    | Spacer-Clutch                   | 36   | 323-14      | 1    | Screw-HH             |
| 16   | 103-1666    | 1    | Sheave-Transmission             | 37   | 116-6278-03 | 1    | Guard-Muffler        |
| 17   | 103-1667    | 1    | Sheave                          | 38   | 323-6       | 4    | Screw-HH             |
| 18   | 103-4177    | 1    | Key                             | 39   | 104-8301    | 4    | Nut-Flange, NI       |
|      |             |      |                                 | 99   | 103-1964    | 1    | Hose-Drain, Oil      |

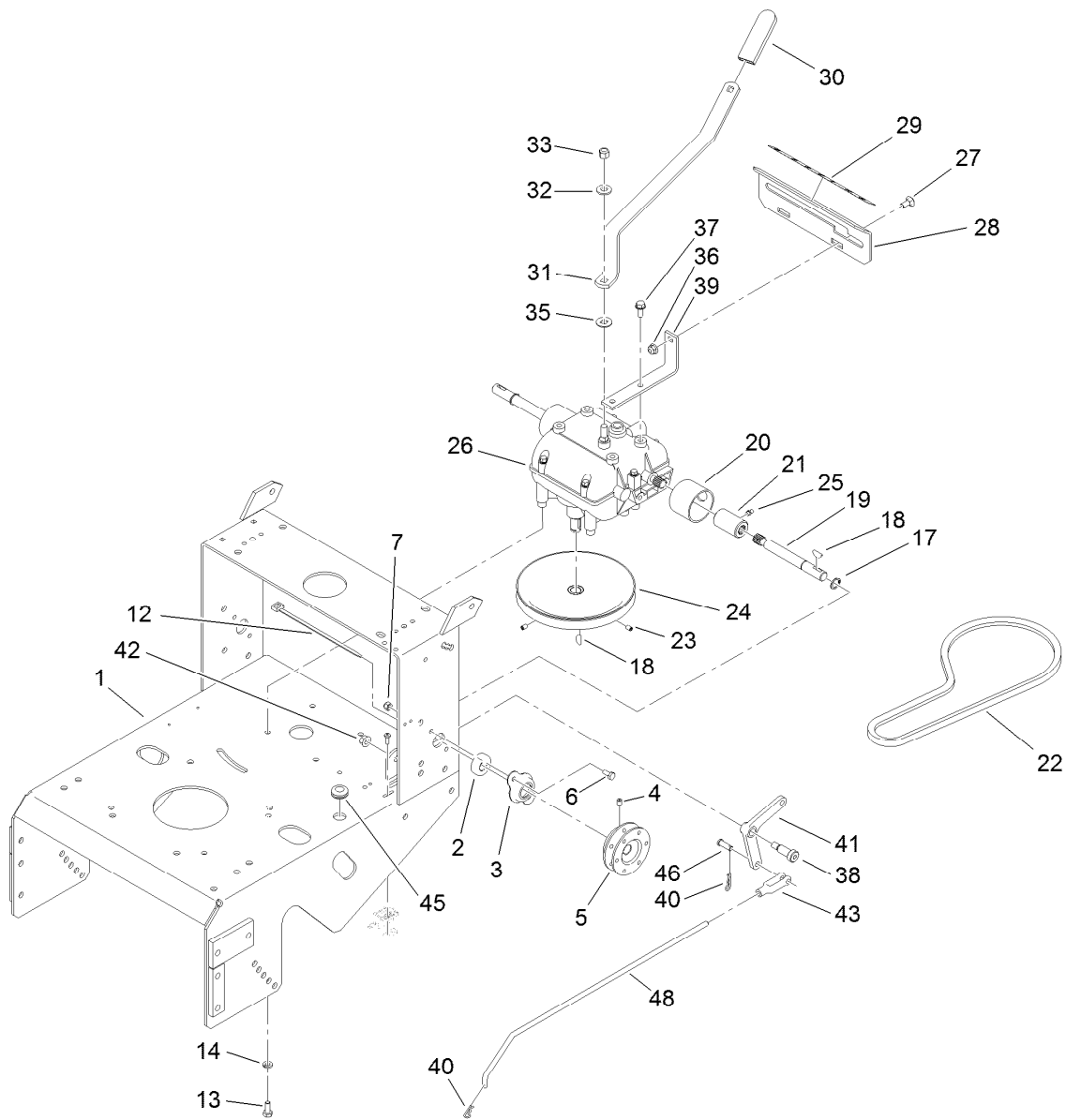
● Not serviced separately

■ Obtain parts from [www.kawpowerpc.com](http://www.kawpowerpc.com)



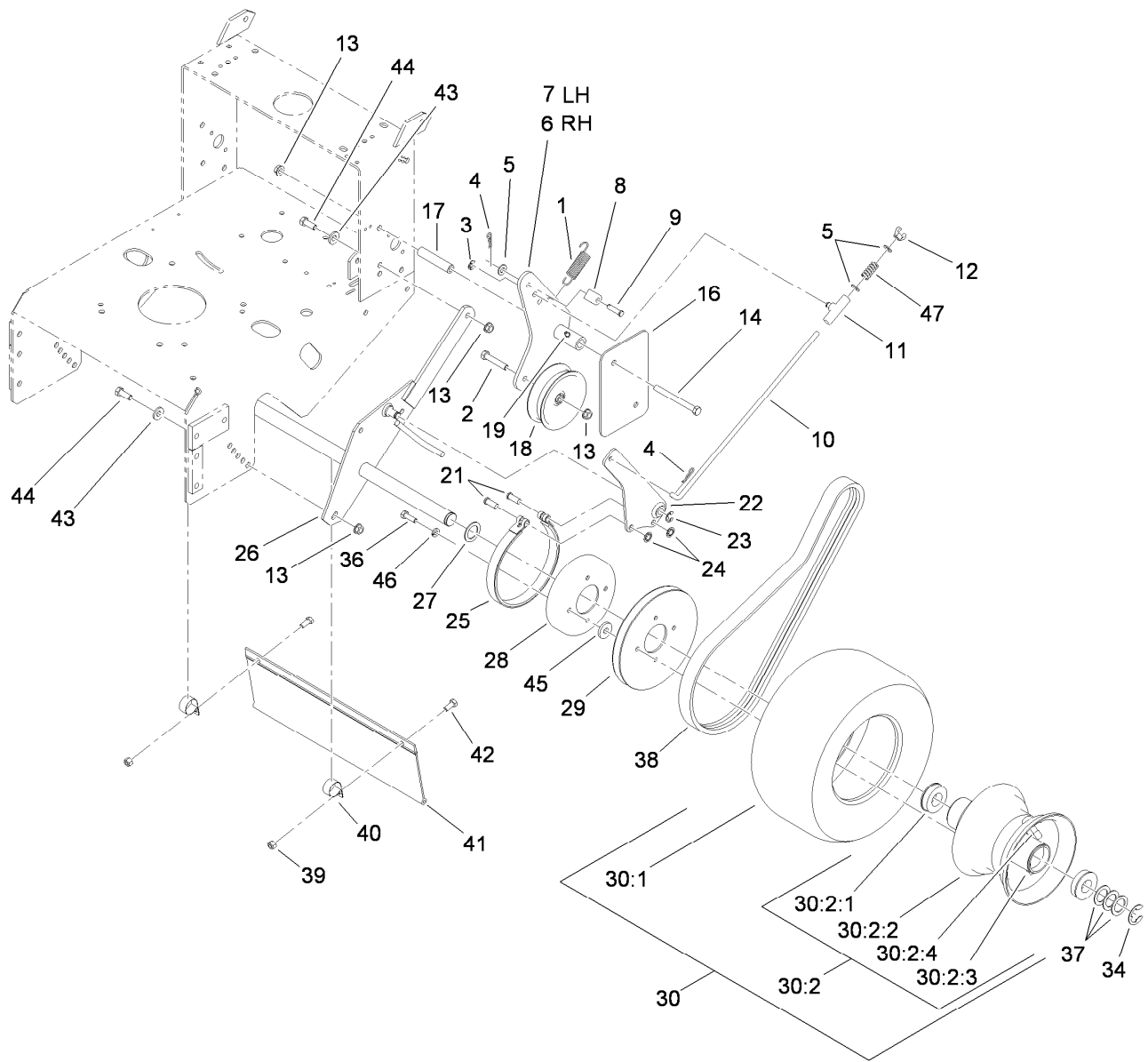
## Fuel System Assembly

| <i>Ref.</i> | <i>Part Number</i> | <i>Qty.</i> | <i>Description</i>     | <i>Ref.</i> | <i>Part Number</i> | <i>Qty.</i> | <i>Description</i>      |
|-------------|--------------------|-------------|------------------------|-------------|--------------------|-------------|-------------------------|
| 1           | 126-1526           | 1           | Fuel Tank ASM          | 7           | 107-4543           | 2           | Clamp                   |
| 1:2         | 114-0284           | 1           | Grommet                | 8           | 104-8300           | 2           | Nut-Flange, NI          |
| 1:3         | 119-3547           | 1           | Valve-Vent, Fuel       | 9           | 99-9415            | 1           | Hose-Fuel               |
| 1:4         | 103-2605           | 1           | Fitting-Fuel, Bulkhead | 10          | 3290-378           | 4           | Tie-Cable               |
| 1:5         | 120-5461           | 1           | Cap-Fuel, Ratcheting   | 11          | 115-7872           | 1           | Hose-Fuel               |
| 2           | 109-0650           | 1           | Hose-Fuel              | 12          | 116-5464           | 1           | Tee And Check           |
| 3           | 1-603770           | 1           | Valve-Fuel             | 13          | 116-4346           | 1           | Hose-Emissions          |
| 4           | 2412-98            | 4           | Clamp-Hose             | 14          | 120-2235           | 1           | Filter-Fuel             |
| 5           | 322-10             | 2           | Screw-HH               | 15          | 116-4769           | 1           | Decal-Filter, Emissions |
| 6           | 3256-3             | 2           | Washer-Flat            |             |                    |             |                         |



## Frame and Transmission Assembly

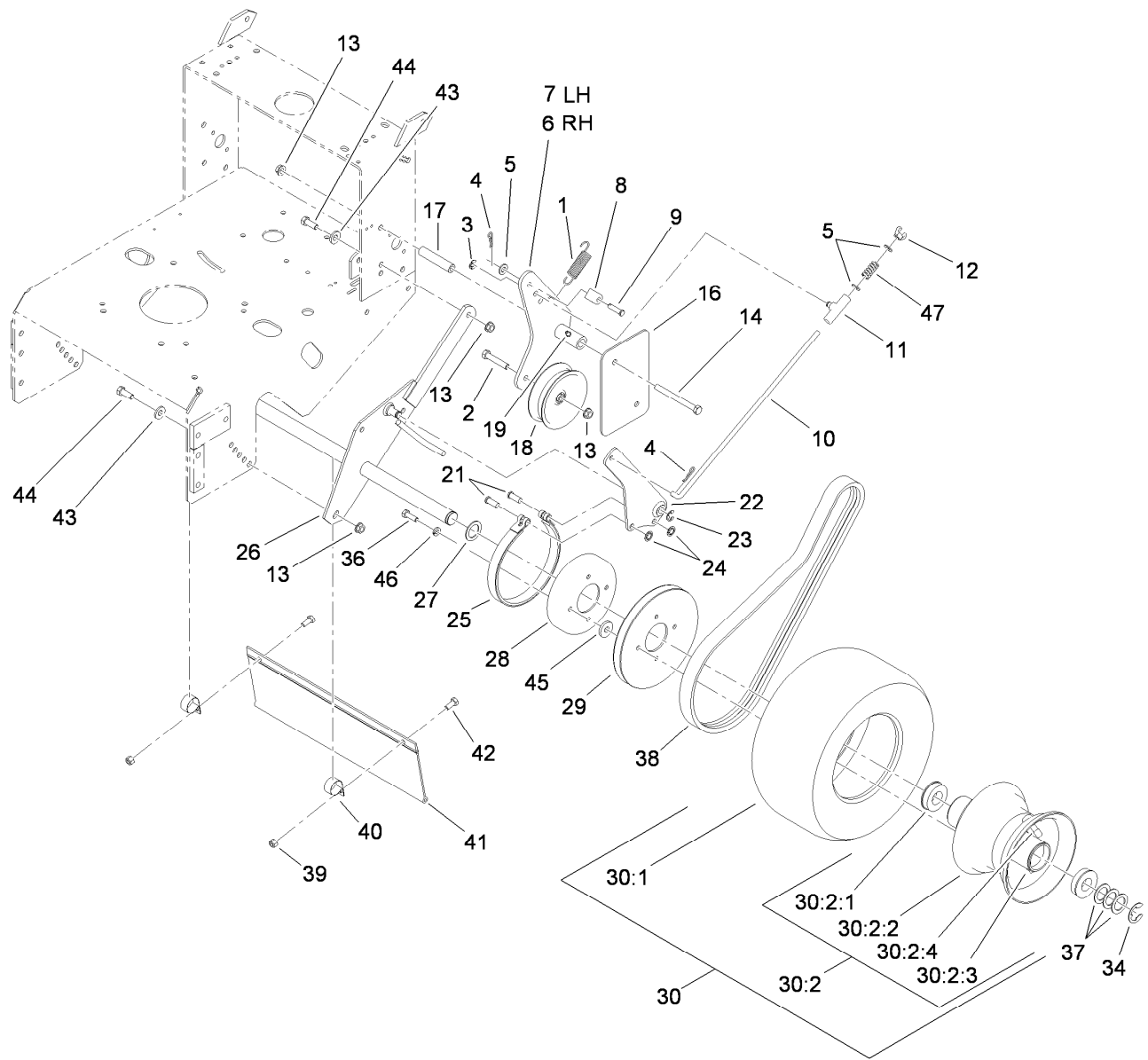
| Ref. | Part Number | Qty. | Description         | Ref. | Part Number | Qty. | Description          |
|------|-------------|------|---------------------|------|-------------|------|----------------------|
| 1    | 116-6084-01 | 1    | Frame-Gear          | 27   | 3230-1      | 2    | Bolt-CARR            |
| 2    | 1-323252    | 2    | Bearing-Shaft       | 28   | 1-323387-03 | 1    | Plate-Shift          |
| 3    | 1-323254    | 2    | Flange-Output       | 29   | 98-3264     | 1    | Decal-Speed, Ground  |
| 4    | 3246-18     | 2    | Setscrew            | 30   | 1-303020    | 1    | Grip-Lever           |
| 5    | 103-6512    | 2    | Sheave-Transmission | 31   | 98-3274-03  | 1    | Lever-Shift          |
| 6    | 321-3       | 4    | Screw-HH            | 32   | 98-5975     | 1    | Washer-Belleville    |
| 7    | 3296-42     | 4    | Nut-Lock, NI        | 33   | 3296-6      | 1    | Nut-Lock             |
| 12   | 1-303287    | 1    | Tie-Cable           | 35   | 1-323379    | 1    | Washer               |
| 13   | 322-3       | 4    | Screw-HH            | 36   | 104-8300    | 2    | Nut-Flange, NI       |
| 14   | 1-805005    | 4    | Washer-Lock         | 37   | 32144-11    | 4    | Screw-HWHTF          |
| 17   | 32151-62    | 2    | Ring-Retaining      | 38   | 1-603403    | 1    | Bolt-Shoulder        |
| 18   | 3257-5      | 3    | Key-Woodruff        | 39   | 1-323389-03 | 2    | Bracket-Plate, Shift |
| 19   | 1-323502    | 2    | Shaft-Transmission  | 40   | 1-806003    | 2    | Pin-Cotter, Hair     |
| 20   | 51-4220     | 2    | Guard-Coupler       | 41   | 1-303186    | 1    | Bellcrank            |
| 21   | 1-323680    | 2    | Coupler             | 42   | 3290-357    | 1    | Nut-HHF, Whiz        |
| 22   | 1-323630    | 1    | V-Belt              | 43   | 1-303105    | 1    | Yoke-Adjustable      |
| 23   | 3245-41     | 2    | Screw-HSH           | 45   | 1-543296    | 1    | Grommet              |
| 24   | 1-323278    | 1    | Sheave-Transmission | 46   | 1-808280    | 1    | Pin-Clevis           |
| 25   | 302-19      | 2    | Fitting-Grease      | 48   | 1-323303    | 1    | Arm-Assist, Linkage  |
| 26   | 1-323500    | 1    | Transmission        |      |             |      |                      |



## Drive Wheel and Brake Assembly

| Ref. | Part Number | Qty. | Description         | Ref.   | Part Number | Qty. | Description              |
|------|-------------|------|---------------------|--------|-------------|------|--------------------------|
| 1    | 98-3273     | 2    | Spring-Extension    | 21     | 1-323307    | 4    | Pin-Clevis               |
| 2    | 323-10      | 2    | Screw-HH            | 22     | 1-322209-03 | 2    | Arm-Brake                |
| 3    | 32151-47    | 2    | Ring-Retaining      | 23     | 32120-47    | 2    | Ring-Retaining, External |
| 4    | 1-806003    | 4    | Pin-Cotter, Hair    | 24     | 1-803051    | 4    | Nut-Push                 |
| 5    | 3256-23     | 4    | Washer-Flat         | 25     | 1-323595    | 2    | Band-Brake               |
| 6    | 110-4925-03 | 1    | Arm-Idler, RH       | 26     | 1-322232-03 | 1    | Axle ASM                 |
| 7    | 110-4926-03 | 1    | Arm-Idler, LH       | 27     | 1-543436    | 2    | Washer-Spacer            |
| 8    | 74-0521     | 2    | Fitting-Rod         | 28     | 1-323261    | 2    | Drum-Brake               |
| 9    | 283-6       | 2    | Pin-Clevis          | 29     | 1-323349    | 2    | Sheave-Wheel, Drive      |
| 10   | 1-323296    | 2    | Rod-Brake           | 30     | 130-8365    | 2    | Wheel And Tire ASM       |
| 11   | 110-5866    | 2    | Swivel-Brake        | 30:1   | 130-8368    | 1    | Tire                     |
| 12   | 1-513959    | 2    | Wingnut-Nylock      | 30:2   | 130-4566    | 1    | Wheel And Hub ASM        |
| 13   | 3290-357    | 10   | Nut-HHF, Whiz       | 30:2:1 | 1-323329    | 2    | Bearing-Flanged          |
| 14   | 323-16      | 4    | Screw-HH            | 30:2:2 |             | 1    | Rim ASM ●                |
| 16   | 98-5131-01  | 2    | Shield-Wheel, Drive | 30:2:3 |             | 1    | Fitting-Grease ●         |
| 17   | 1-323694    | 4    | Spacer-Shield       | 30:2:4 |             | 1    | Valve Stem And Cap ●     |
| 18   | 1-323634    | 2    | Idler-Drive, Wheel  | 34     | 1-808519    | 2    | Ring-Snap                |
| 19   | 302-19      | 2    | Fitting-Grease      | 36     | 322-5       | 8    | Screw-HH                 |

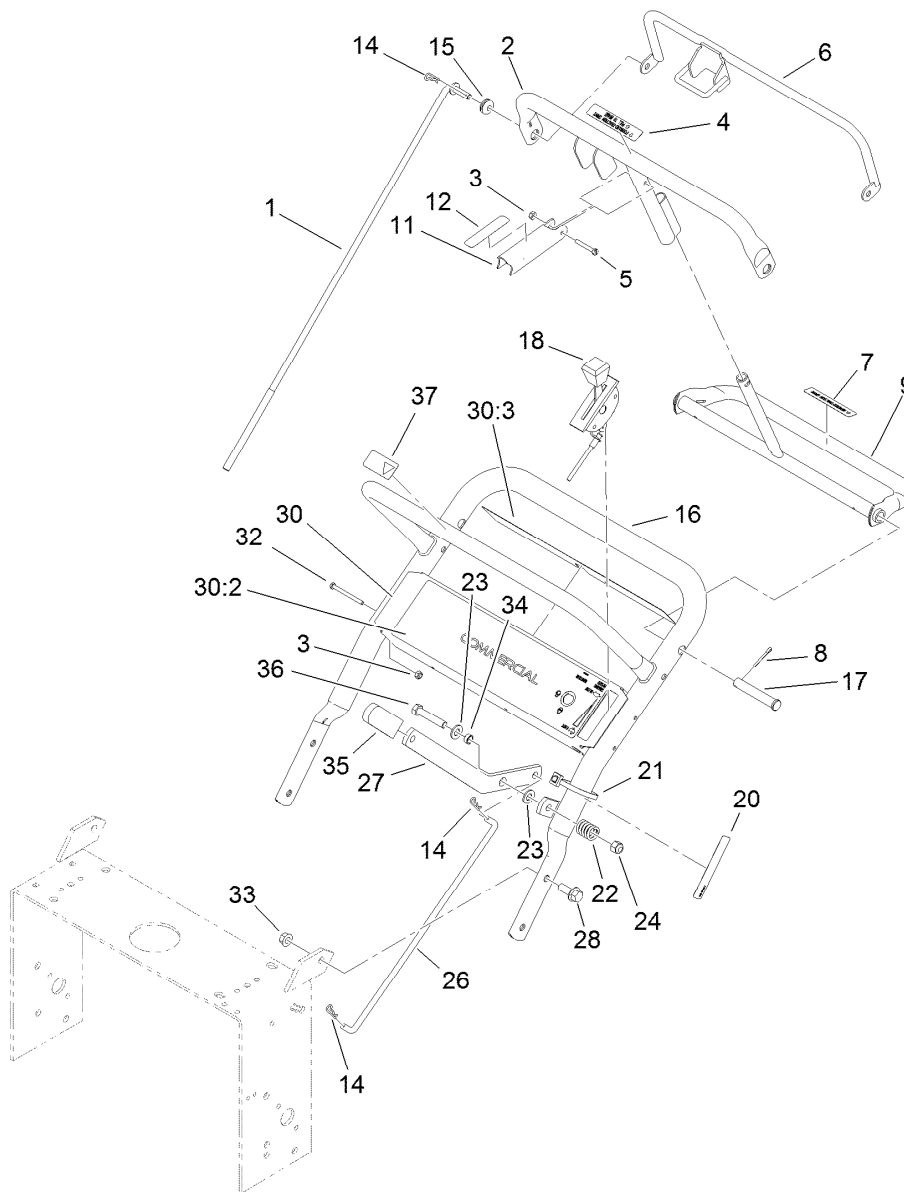
● Not serviced separately



## Drive Wheel and Brake Assembly (continued)

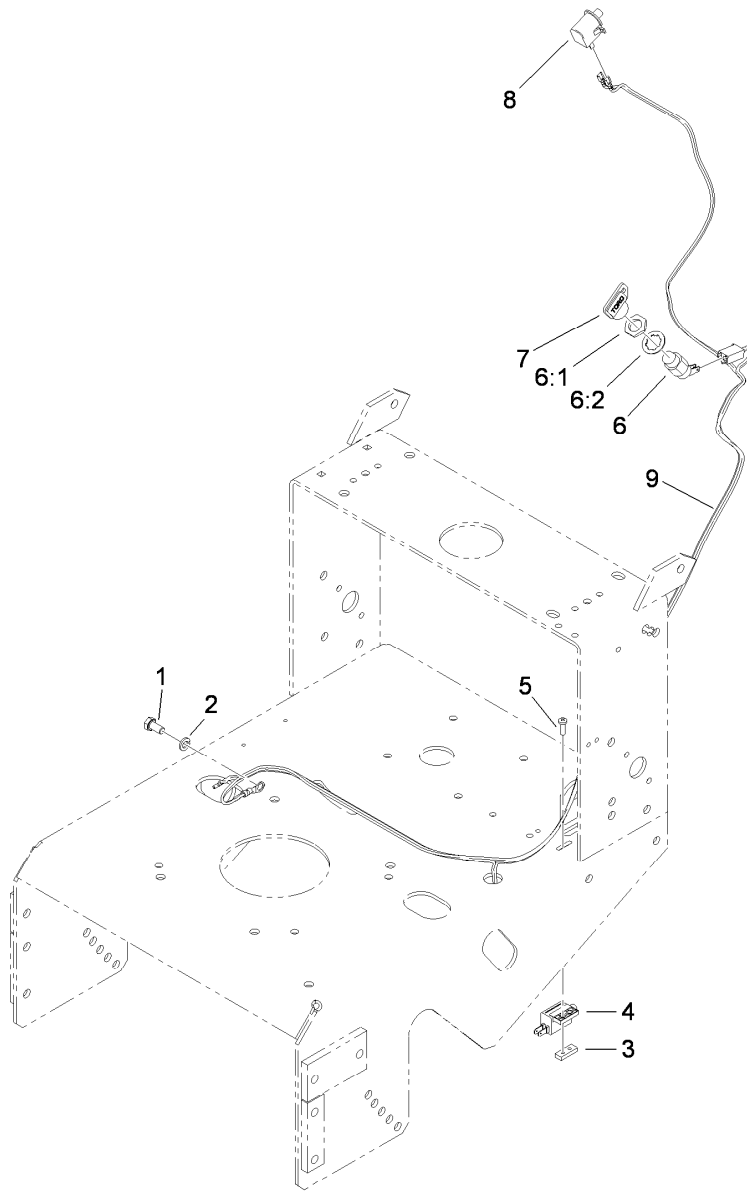
| Ref. | Part Number | Qty. | Description       | Ref. | Part Number | Qty. | Description        |
|------|-------------|------|-------------------|------|-------------|------|--------------------|
| 37   | 1-523157    | 6    | Washer-Spacer     | 43   | 98-5975     | 4    | Washer-Belleville  |
| 38   | 1-323744    | 2    | Belt-Drive, Wheel | 44   | 323-6       | 4    | Screw-HH           |
| 39   | 3296-29     | 2    | Nut-Lock, NI      | 45   | 1-373034    | 8    | Washer             |
| 40   | 2412-104    | 2    | Clamp-R           | 46   | 1-805005    | 8    | Washer-Lock        |
| 41   | 98-3259     | 1    | Shield-Trailing   | 47   | 1-323245    | 2    | Spring-Compression |
| 42   | 322-3       | 2    | Screw-HH          |      |             |      |                    |

● Not serviced separately



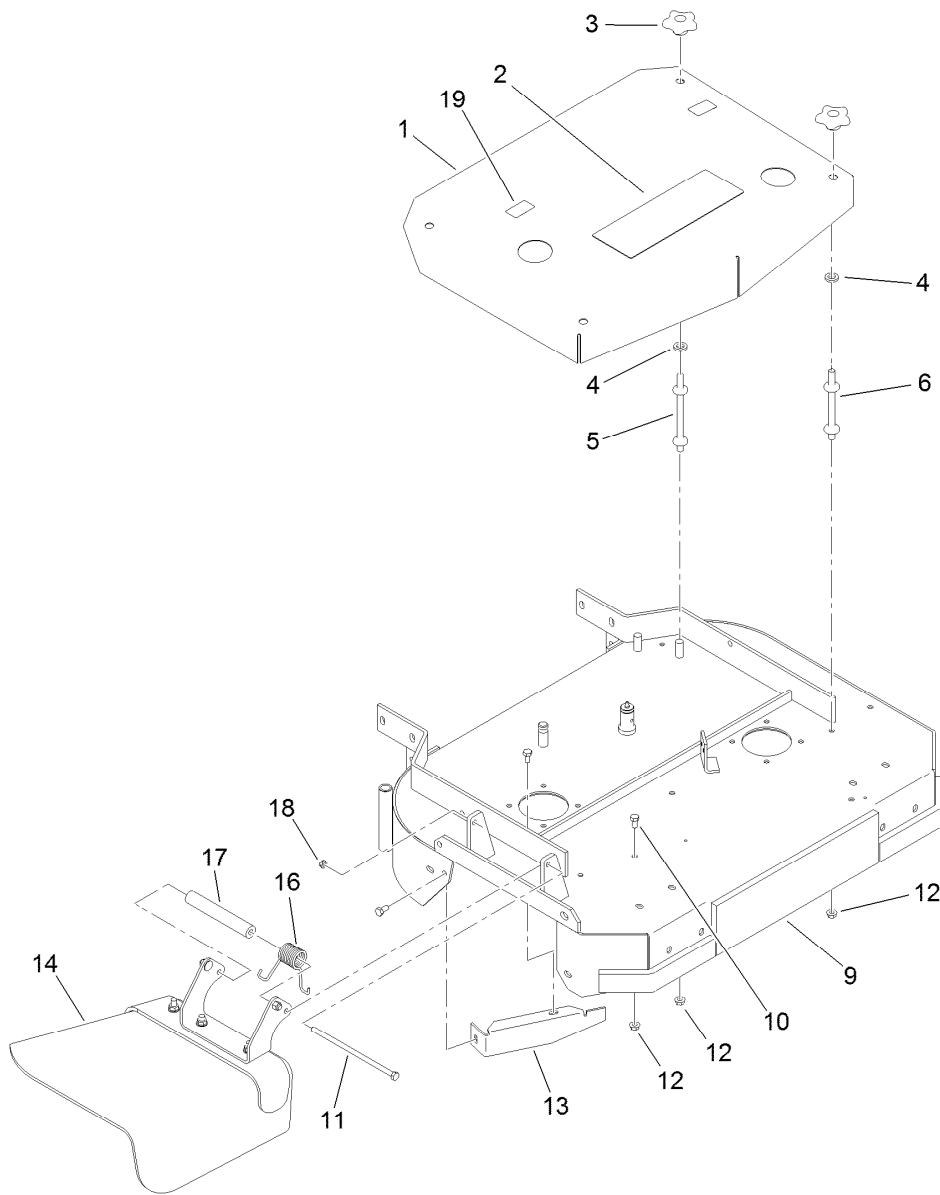
## Handle and Control Assembly

| Ref. | Part Number | Qty. | Description          | Ref. | Part Number | Qty. | Description             |
|------|-------------|------|----------------------|------|-------------|------|-------------------------|
| 1    | 98-3282     | 2    | Rod-Control          | 21   | 1-303335    | 2    | Tie-Plastic             |
| 2    | 95-5522-03  | 1    | Bar-Control          | 22   | 1-303160    | 1    | Spring-Compression      |
| 3    | 3296-2      | 5    | Nut-Lock, NI         | 23   | 3256-24     | 2    | Washer-Flat             |
| 4    | 93-7298     | 1    | Decal-Bar, Control   | 24   | 104-8301    | 1    | Nut-Flange, NI          |
| 5    | 32105-1     | 1    | Screw-SHH            | 26   | 98-3279     | 1    | Linkage-Drive, Blade    |
| 6    | 82-7680-03  | 1    | Bail                 | 27   | 98-3287-03  | 1    | Lever-Engagement, Blade |
| 7    | 93-7299     | 1    | Decal-Reverse        | 28   | 3234-11     | 4    | Screw-HHF               |
| 8    | 3272-11     | 2    | Pin-Cotter           | 30   | 110-6905    | 1    | Control Panel ASM       |
| 9    | 106-5477-03 | 1    | Pivot-Control        | 30:2 | 130-8374    | 1    | Decal-Panel, Control    |
| 11   | 98-3261-03  | 1    | Lever-Brake, Parking | 30:3 | 106-5519    | 1    | Decal-Danger            |
| 12   | 93-7442     | 1    | Decal-Lever, Parking | 32   | 32105-14    | 4    | Screw-SHH               |
| 14   | 1-806003    | 3    | Pin-Cotter, Hair     | 33   | 32128-21    | 4    | Nut-HF                  |
| 15   | 237-141     | 2    | Grommet-Rubber       | 34   | 99-8509     | 1    | Spacer                  |
| 16   | 98-3267-03  | 1    | Handle-Upper         | 35   | 1-303020    | 1    | Grip-Lever              |
| 17   | 283-55      | 2    | Pin-Clevis           | 36   | 323-10      | 1    | Screw-HH                |
| 18   | 119-6539    | 1    | Cable-Throttle       | 37   | 98-4387     | 1    | Decal-Protection, Ear   |
| 20   | 95-5537     | 1    | Decal-Engage, Deck   |      |             |      |                         |



## Wire Harness Assembly

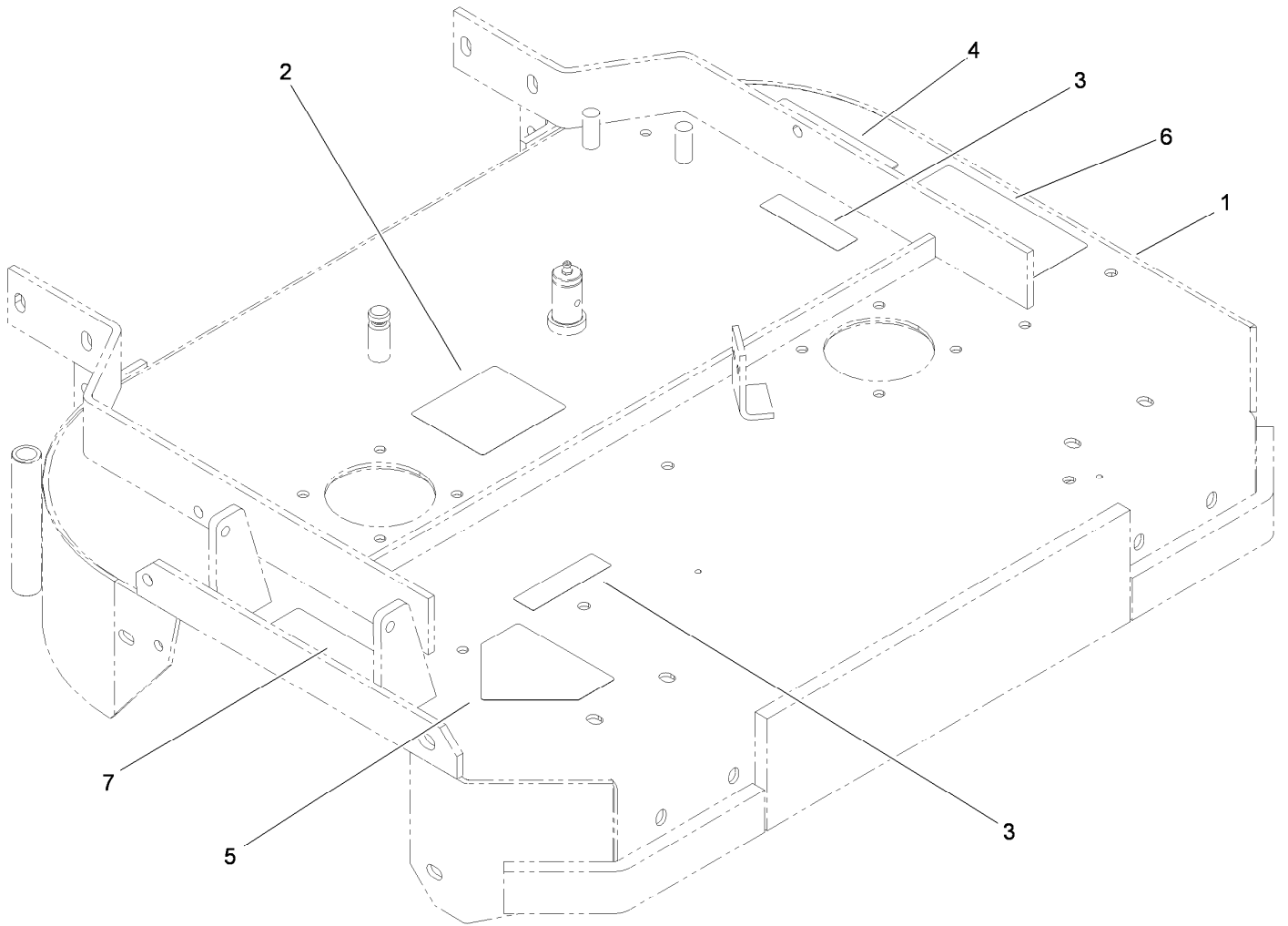
| <i>Ref.</i> | <i>Part Number</i> | <i>Qty.</i> | <i>Description</i>      |
|-------------|--------------------|-------------|-------------------------|
| 1           | 33114-016          | 1           | Screw-HH                |
| 2           | 3253-4             | 1           | Washer-Lock             |
| 3           | 1-633181           | 1           | Plate-Tapped            |
| 4           | 1-513152           | 1           | Switch-Closed, Normally |
| 5           | 3290-500           | 2           | Screw-PPH               |
| 6           | 29-5560            | 1           | Switch-On / Off         |
| 6:1         | 218-461            | 1           | Nut-HH                  |
| 6:2         | 3254-5             | 1           | Washer-Tooth, Internal  |
| 7           | 63-8360            | 1           | Key-Ignition            |
| 8           | 740275             | 1           | Switch                  |
| 9           | 119-6535           | 1           | Harness-Wire            |



## Deck and Shield Assembly

| <i>Ref.</i> | <i>Part Number</i> | <i>Qty.</i> | <i>Description</i>        |
|-------------|--------------------|-------------|---------------------------|
| 1           | 1-322149-01        | 1           | Shield ASM                |
| 2           | 106-0710           | 1           | Decal                     |
| 3           | 106-4161           | 4           | Knob-Handle               |
| 4           | 1-323417           | 4           | Washer                    |
| 5           | 1-303536           | 2           | Stud-Shield, Belt (Long)  |
| 6           | 1-303537           | 2           | Stud-Shield, Belt (Short) |
| 9           | 110-6901           | 1           | 32 Inch Deck ASM          |
| 10          | 322-2              | 7           | Screw-HH                  |

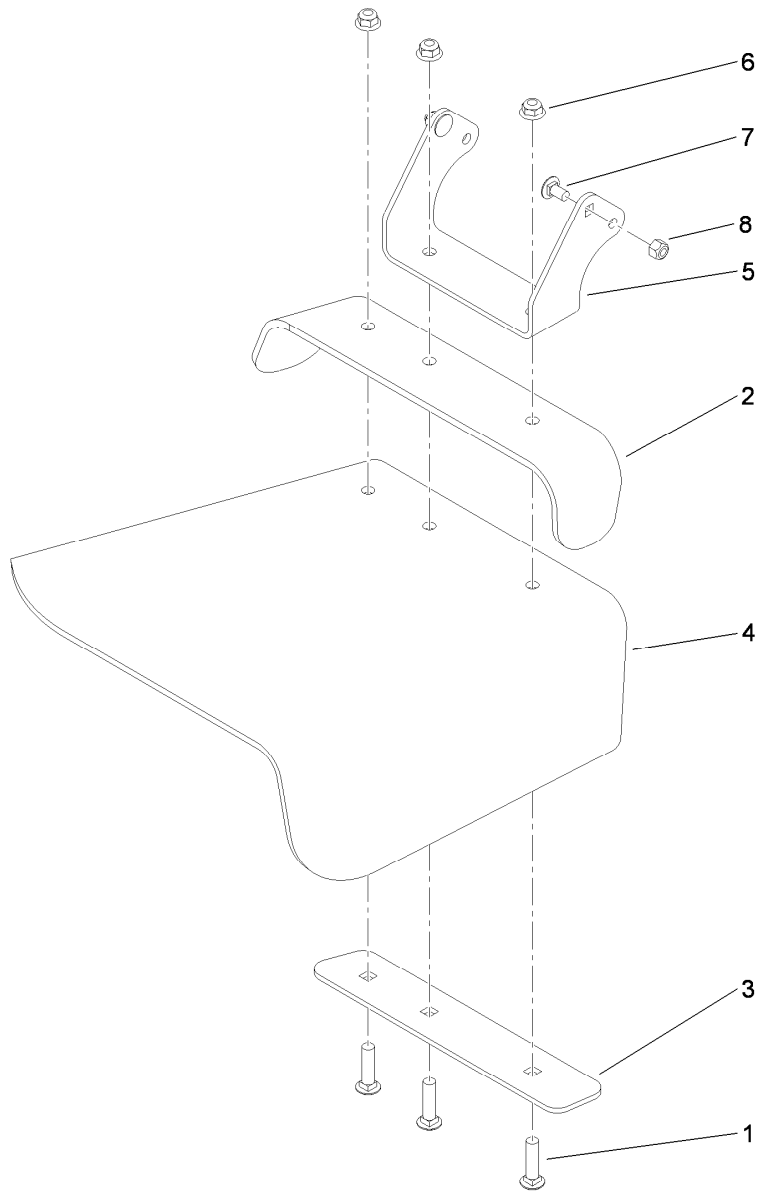
| <i>Ref.</i> | <i>Part Number</i> | <i>Qty.</i> | <i>Description</i>         |
|-------------|--------------------|-------------|----------------------------|
| 11          | 322-50             | 1           | Screw-HH                   |
| 12          | 32128-20           | 11          | Nut-HF                     |
| 13          | 116-1730-01        | 1           | Baffle-Dogleg              |
| 14          | 119-6529           | 1           | Deflector ASM              |
| 16          | 108-4052           | 1           | Spring-Torsion             |
| 17          | 105-4622           | 1           | Spacer                     |
| 18          | 3296-47            | 1           | Nut-Lock, NI               |
| 19          | 106-5517           | 2           | Decal-Warning, Hot Surface |



## Deck Decal Assembly No. 110-6901

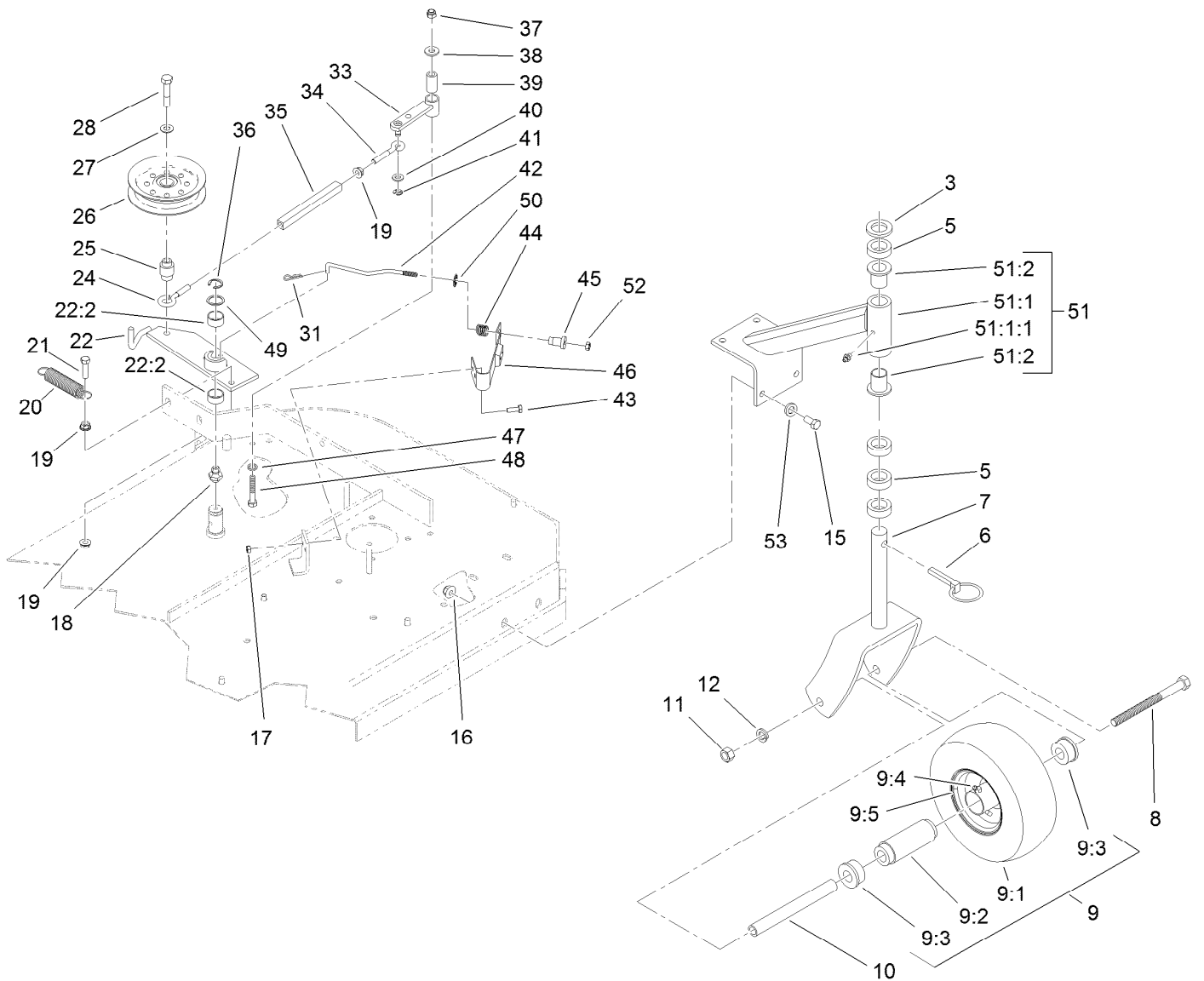
| <i>Ref.</i> | <i>Part Number</i> | <i>Qty.</i> | <i>Description</i>  |
|-------------|--------------------|-------------|---------------------|
| 1           |                    | 1           | Deck ●              |
| 2           | 98-3296            | 1           | Decal-Routing, Belt |
| 3           | 112-9028           | 2           | Decal-Cover Missing |
| 4           | 98-5130            | 1           | Decal-Torque, Bolt  |
| 5           | 112-8760           | 1           | Decal-Danger        |
| 6           | 93-7010            | 1           | Decal-Danger        |
| 7           | 121-6049           | 1           | Decal-Danger        |

● Not serviced separately



## Deflector Assembly No. 119-6529

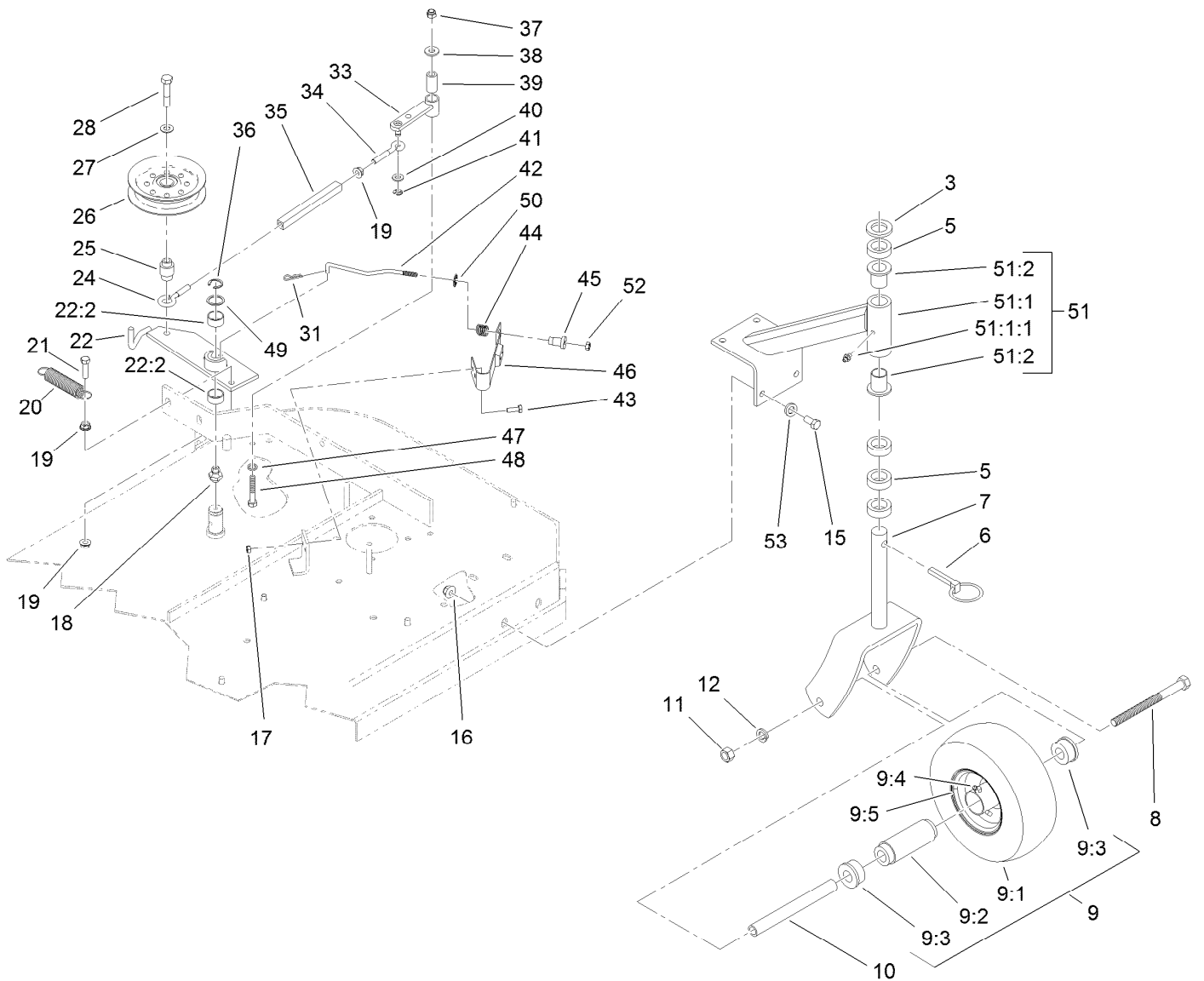
| <i>Ref.</i> | <i>Part Number</i> | <i>Qty.</i> | <i>Description</i>          |
|-------------|--------------------|-------------|-----------------------------|
| 1           | 3231-4             | 3           | Screw-CARR                  |
| 2           | 107-4138-01        | 1           | Strap-Deflector, Top        |
| 3           | 107-4139-01        | 1           | Strap-Discharge             |
| 4           | 107-4137           | 1           | Deflector-Rubber            |
| 5           | 119-6532-01        | 1           | Bracket-Mounting, Deflector |
| 6           | 104-8301           | 3           | Nut-Flange, NI              |
| 7           | 3230-18            | 2           | Screw-CARR                  |
| 8           | 3296-29            | 2           | Nut-Lock, NI                |



## Idler Arm and Caster Wheel Assembly

| Ref. | Part Number | Qty. | Description            | Ref. | Part Number | Qty. | Description         |
|------|-------------|------|------------------------|------|-------------|------|---------------------|
| 3    | 1-513338    | 2    | Washer-Flat            | 19   | 32128-20    | 3    | Nut-HF              |
| 5    | 1-303314    | 8    | Spacer-Caster          | 20   | 1-323071    | 1    | Spring-Extension    |
| 6    | 1-809020    | 2    | Pin                    | 21   | 116-3515    | 1    | Screw-HH, Special   |
| 7    | 116-7942-01 | 2    | Fork-Caster            | 22   | 103-3600    | 1    | Idler Arm ASM       |
| 8    | 325-20      | 2    | Screw-HH               | 22:2 | 1-323729    | 2    | Sleeve-Bearing      |
| 9    | 130-4557    | 2    | Wheel And Tire ASM     | 24   | 1-303348    | 1    | Eyebolt-Thread, LH  |
| 9:1  |             | 1    | Tire ●                 | 25   | 1-303434    | 1    | Bushing-Engagement  |
| 9:2  | 1-513809    | 1    | Bearing                | 26   | 116-3626    | 1    | Pulley-Idler        |
| 9:3  | 1-513810    | 2    | Bushing                | 27   | 98-5975     | 1    | Washer-Belleville   |
| 9:4  | 302-61      | 1    | Fitting-Grease         | 28   | 702809      | 1    | Screw-HH            |
| 9:5  |             | 1    | Wheel ●                | 31   | 1-806003    | 1    | Pin-Cotter, Hair    |
| 10   | 1-513547    | 2    | Spacer                 | 33   | 1-322235    | 1    | Arm-Assist          |
| 11   | 3217-9      | 2    | Nut-HH                 | 34   | 1-303238    | 1    | Eyebolt-Thread, RH  |
| 12   | 3253-7      | 2    | Washer-Lock            | 35   | 1-303236    | 1    | Body-Turnbuckle     |
| 15   | 323-6       | 8    | Screw-HH               | 36   | 32151-103   | 1    | Ring-Retaining, EXT |
| 16   | 104-8301    | 8    | Nut-Flange, NI         | 37   | 3296-29     | 1    | Nut-Lock, NI        |
| 17   | 3296-42     | 2    | Nut-Lock, NI           | 38   | 3256-3      | 1    | Washer-Flat         |
| 18   | 302-40      | 1    | Fitting-Grease, 90 DEG | 39   | 1-403179    | 1    | Tube-Pivot          |

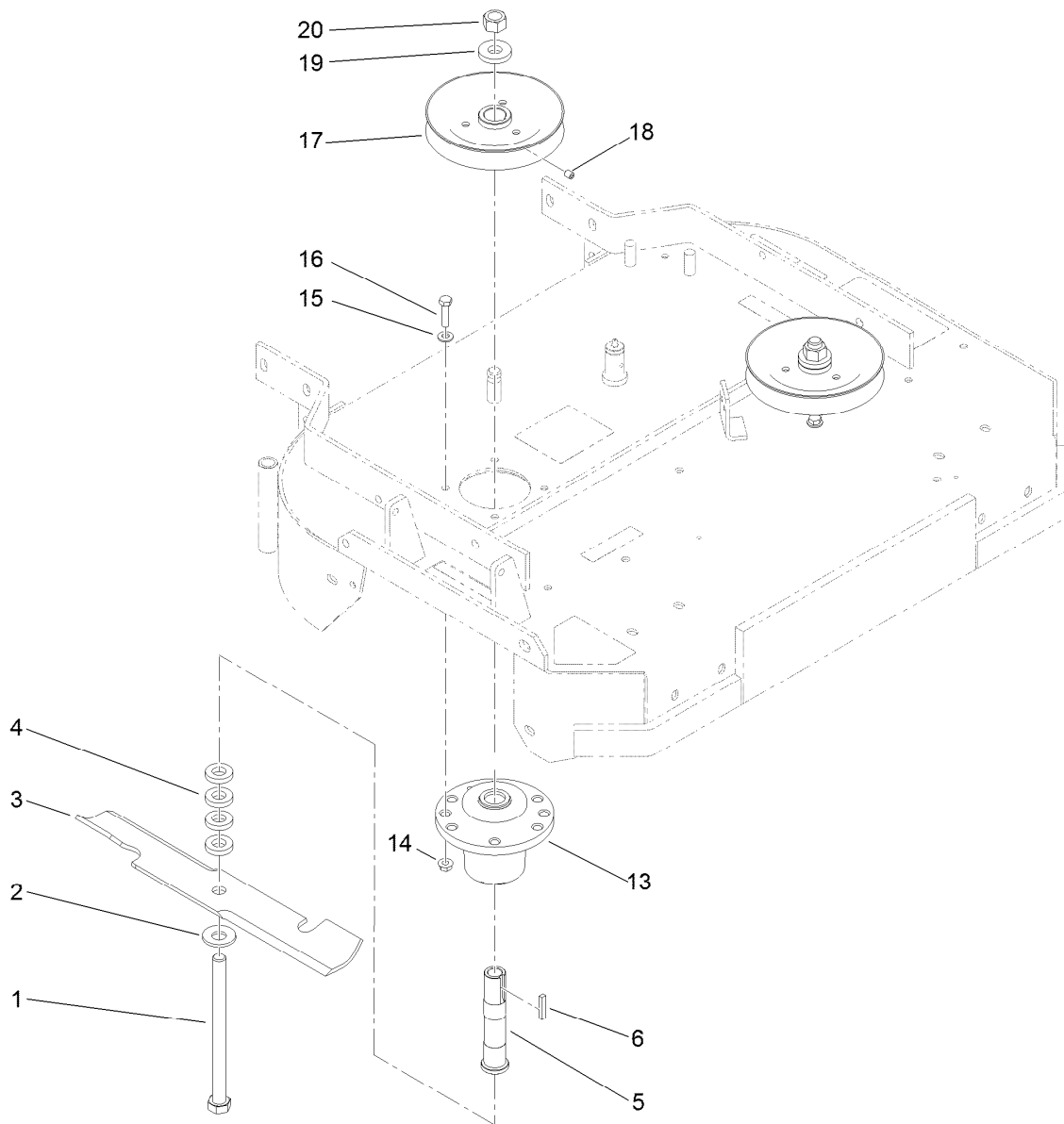
● Not serviced separately



## Idler Arm and Caster Wheel Assembly (continued)

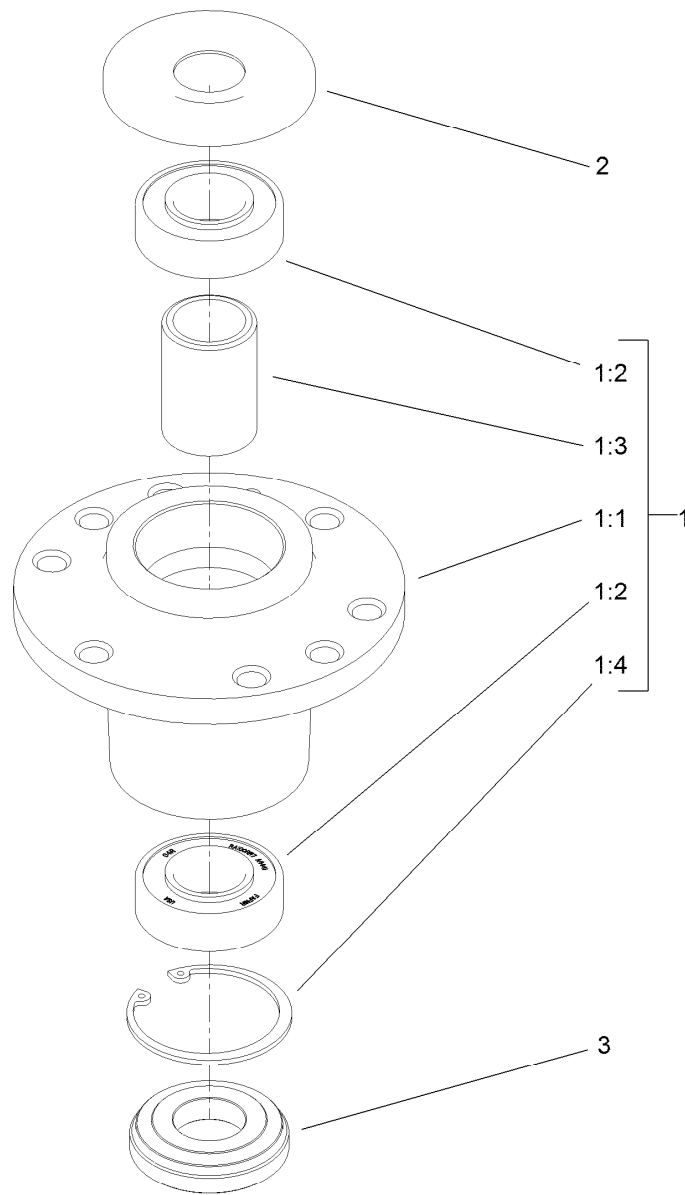
| Ref. | Part Number | Qty. | Description         | Ref.   | Part Number | Qty. | Description      |
|------|-------------|------|---------------------|--------|-------------|------|------------------|
| 40   | 3256-23     | 1    | Washer-Flat         | 49     | 1-303352    | 1    | Washer-Spindle   |
| 41   | 32120-35    | 1    | Ring-Retaining, EXT | 50     | 1-323748    | 1    | Ring-Push On     |
| 42   | 1-323718    | 1    | Rod-Brake           | 51     | 1-302203    | 2    | Support ASM      |
| 43   | 321-4       | 2    | Screw-HH            | 51:1   |             | 1    | Support-Caster ● |
| 44   | 1-323747    | 1    | Spring-Compression  | 51:1:1 | 302-52      | 1    | Fitting-Grease   |
| 45   | 1-323746    | 1    | Spacer-Flanged      | 51:2   | 1-303514    | 2    | Bearing-Flanged  |
| 46   | 1-324372    | 1    | Pad And Spring ASM  | 52     | 3296-56     | 1    | Nut-Lock, NI     |
| 47   | 1-303334    | 1    | Washer-Spring       | 53     | 3256-24     | 8    | Washer-Flat      |
| 48   | 322-10      | 1    | Screw-HH            |        |             |      |                  |

● Not serviced separately



## Spindle and Blade Assembly

| <i>Ref.</i> | <i>Part Number</i> | <i>Qty.</i> | <i>Description</i>      |
|-------------|--------------------|-------------|-------------------------|
| 1           | 1-800861           | 2           | Screw-Cap, HH           |
| 2           | 1-513208           | 2           | Washer-Spring           |
| 3           | 103-2527           | 2           | Blade-Notched           |
| 4           | 1-323539           | 8           | Spacer                  |
| 5           | 1-323529           | 2           | Tube-Spindle, Short     |
| 6           | 1-807267           | 2           | Key                     |
| 13          | 107-4065           | 2           | Cutter Housing ASM      |
| 14          | 32128-20           | 8           | Nut-HF                  |
| 15          | 1-303334           | 8           | Washer-Spring           |
| 16          | 322-6              | 8           | Screw-HH                |
| 17          | 1-403183           | 2           | Sheave                  |
| 18          | 3246-18            | 2           | Setscrew                |
| 19          | 1-323339           | 2           | Washer-Retainer, Sheave |
| 20          | 3219-6             | 2           | Nut-Hex                 |



## Cutter Housing Assembly No. 107-4065

| <i>Ref.</i> | <i>Part Number</i> | <i>Qty.</i> | <i>Description</i>   |
|-------------|--------------------|-------------|----------------------|
| 1           |                    | 1           | Cutter Housing ASM ● |
| 1:1         | 103-7975           | 1           | Housing-Spindle      |
| 1:2         | 103-2477           | 2           | Bearing-Jackshaft    |
| 1:3         | 103-2534           | 1           | Spacer-Bearing       |
| 1:4         | 32120-8            | 1           | Ring-Snap            |
| 2           | 103-1330           | 1           | Guard-Bearing, Top   |
| 3           | 103-2535           | 1           | Spacer-Guard, Bottom |

● Not serviced separately

# Attachments and Accessories

## For 30672 Commercial Walk-Behind Mower Fixed Deck, T-Bar, Gear Drive with 32in Cutting Unit

| <b>Product Name</b>                           | <b>Model/Part</b> |
|---|-------------------|
| Soft Bag (3 Bushel).....                      | 30198             |
| 32in Recycler Kit.....                        | 110-4915          |
| Atomic Blade and Decal Assembly .....         | 104-8595          |
| 32in and 48in Fixed Deck Low Lift Blades..... | 103-2507          |
| Blade-Notched.....                            | 103-2527          |
| Blade-Atomic, 16.25in (6 Pack) .....          | 110-0407          |
| Spring-Extension .....                        | 110-1119          |
| Filter-fuel.....                              | 120-2235          |
| Spark Plug .....                              | 92-2153           |
| Oil Filter .....                              | 119-5852          |
| Element-Filter, Air .....                     | 120-7447          |
| Oil-Synthetic, All Season .....               | 117-0066          |
| Toro 4-cycle Sae 30 Oil (32oz Bottle).....    | 38903             |

**Notes:**



**Count on it.**