



Count on it.

Parts Catalog

Road Light Kit including Brake Lights

CT2120/2140 Mower

Model No. 02916—Serial No. 315000001 and Up



Ordering Replacement Parts

To order replacement parts, please supply the part number, the quantity, and the description of each part desired.

Understanding Reference Numbers

Each identified part in an illustration has a reference number. The reference number for a part also appears in the parts list, along with other information about the part.

This catalog uses two special reference number formats, one to indicate parts in a service assembly and another to indicate the quantity of a given part in an illustration.

Service Assembly Reference Numbers

Parts in service assemblies have reference numbers in the form a:b. The a represents the reference number of the entire service assembly and the b represents a sequential number unique to each part within the service assembly.

For example, a wheel assembly might be identified by reference number 6, the tire by 6:1, the valve by 6:2, and the wheel by 6:3. When you order the assembly identified by reference number 6, you receive all parts identified by reference numbers 6:1, 6:2, and 6:3. However, you may also order any part individually. Reference numbers of this type appear in illustration and in parts lists.

Reference Numbers Indicating Quantity

In an illustration, if a reference number indicates more than one part, the reference number has the form nX y. The n represents the quantity of the part, the X is the multiplication symbol, and the y represents the reference number.

For example, in an illustration, the reference number 2X 37 means that two of the parts identified by reference number 37 are indicated.

List of Abbreviations

AR: as required

ASM: assembly

BBC: blade brake control

BHTF: button head thread forming

CARR: carriage

CCW: counter clockwise

CW: clockwise

DEG: degrees

DPA: Dual Point Adjustment

ECM: electronic control module

EXT: external

FH: flat head

GA: gauge

HD: heavy-duty

HF: hex flange

HH: hex head

HHF: hex head flange

HHFTF: hex head flange thread forming

HJ: hex jam

HLH: hex lag head

HOC: height-of-cut

HP: high pressure

HSBH: hex socket button head

HSFH: hex socket flat head

HSH: hex socket head

HWH: hex washer head

HWHTF: hex washer head thread forming

HYD: hydraulic

LH: left hand

LP: low pressure

LPG: Liquefied Petroleum Gas

NI: nylon insert

NPTF: national pipe thread fine

PFH: phillips flat head

PPH: phillips pan head

PPHTF: phillips pan head thread forming

PRH: phillips round head

PTH: phillips truss head

PTO: power-take-off

RH: right hand

ROPS: roll-over protection system

RRB: rear roller brush

SFH: slotted fillister head

SHH: slotted hex head

SHWH: slotted hex washer head

SPH: slotted pan head

SQH: square head

SRH: slotted round head

STD: standard

TAP: self tapping

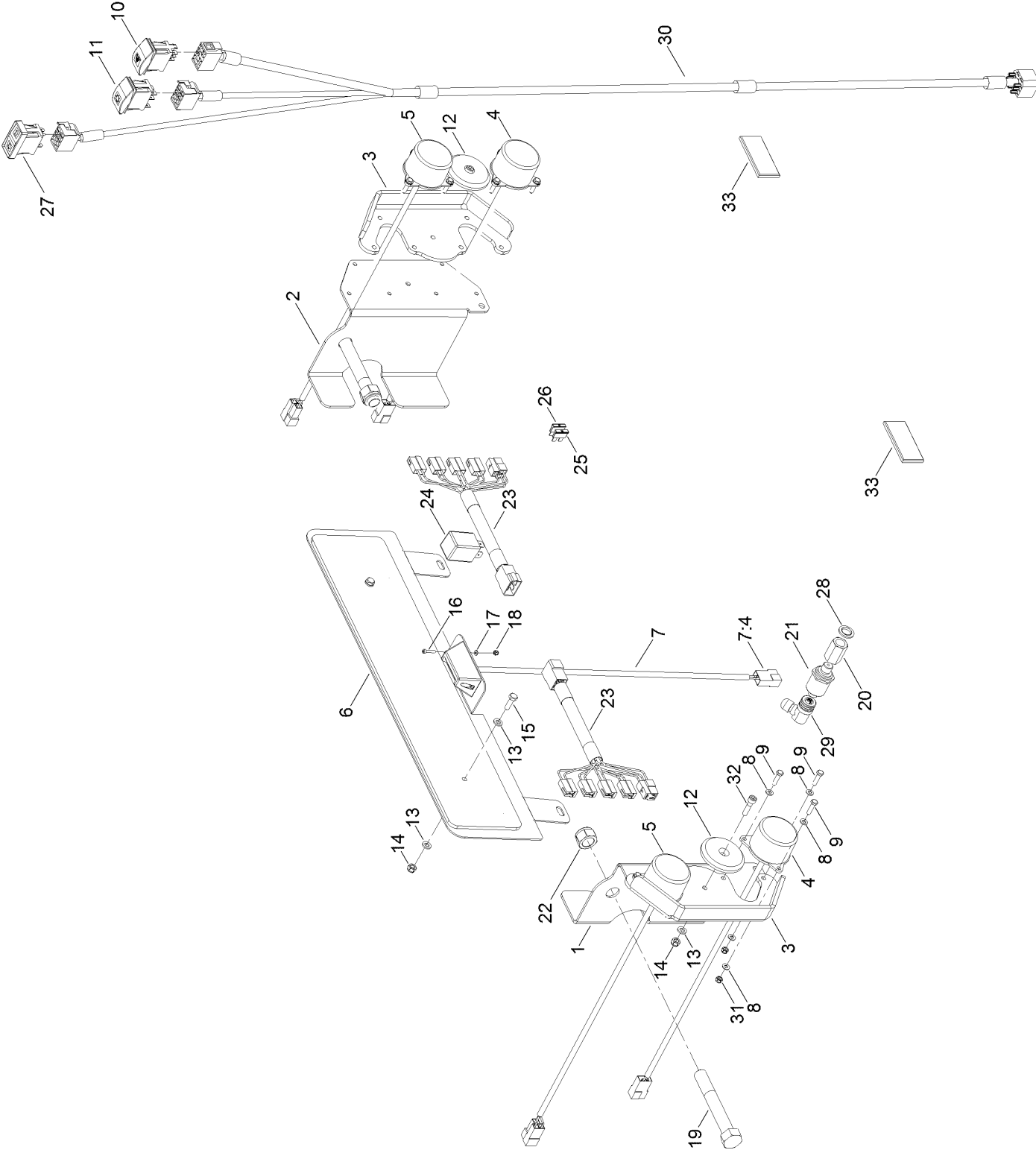
TTH: torx truss head

Contents

Rear Light Bracket Assembly 4

Front Light Bracket Assembly..... 6

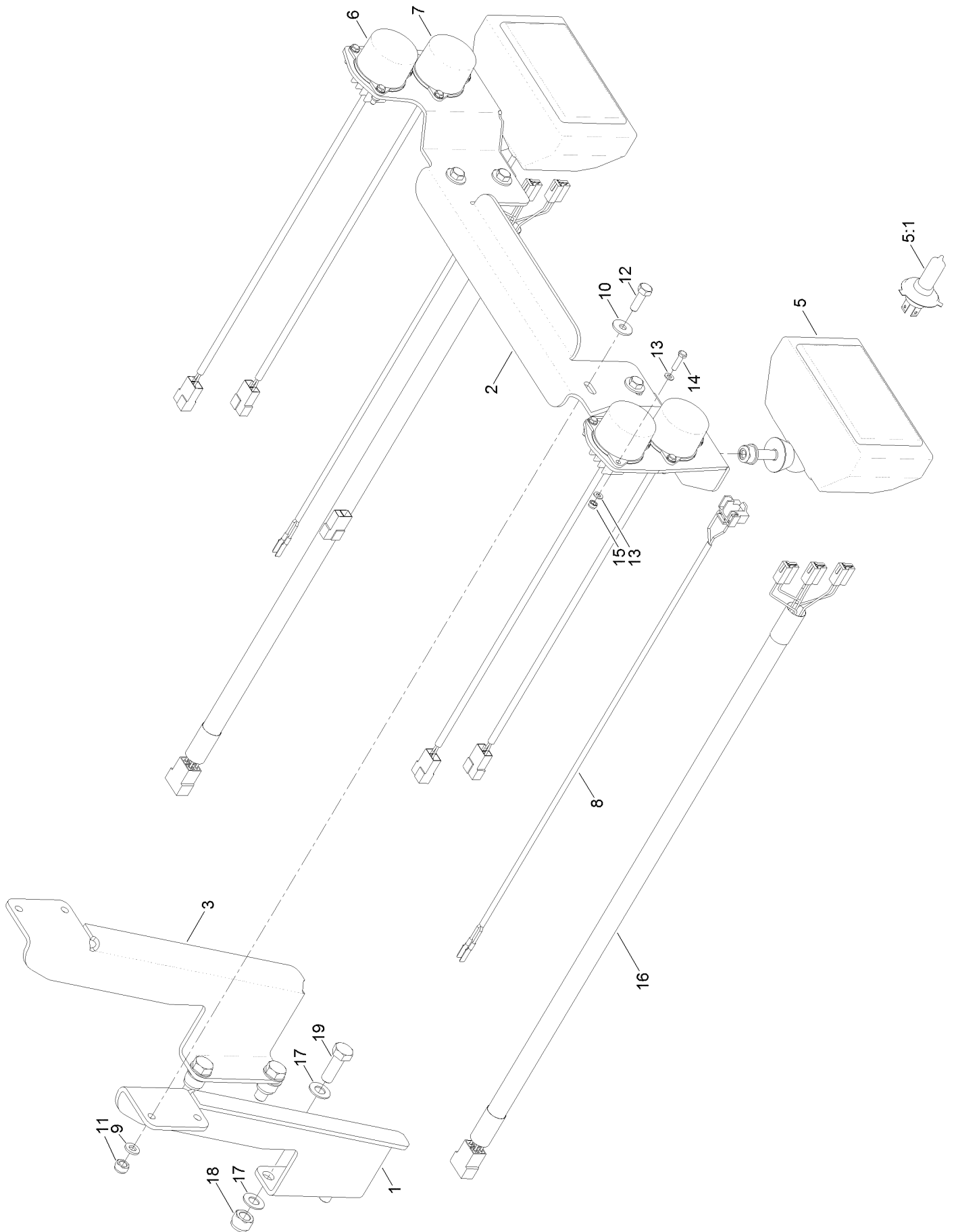
Rear Light Bracket Assembly



Rear Light Bracket Assembly (continued)

<i>Ref.</i>	<i>Part Number</i>	<i>Qty.</i>	<i>Description</i>	<i>Ref.</i>	<i>Part Number</i>	<i>Qty.</i>	<i>Description</i>
1	111-4765-03	1	Light-Bracket, Left	17	HY09697	2	Washer-Plain
2	111-3119-03	1	Light-Bracket, Right	18	HY09698	2	Nut-Nyloc
3	111-3710-03	2	Guard-Light	19	ZBH1P110U	2	Bolt
4	111-6180	2	Light-Indicator, Rear	20	111-3765	1	Adaptor-Switch, Pressure
5	111-6179	2	Light-Stop/Tail	21	111-3759	1	Switch-Pressure
6	111-4710-03	1	Bracket-Number, Plate	22	09456	2	Nut
7	111-6178	1	Plate-Number	23	111-6181	2	Connector-Lights, Rear
7:4	111-6086	1	Housing	24	111-3766	1	Relay-Flasher
8	09470	24	Washer	25	70-09-026	1	Fuse-10A
9	ZDH1E020U	12	Screw-HH	26	70-09-151	1	Fuse-15A
10	111-2223	1	Switch-Warning, Hazard	27	111-2244	1	Switch-Indicator
11	111-2252	1	Switch-Lights	28	10-06-030	1	Seal-Dowty
12	111-3760	2	Reflector-Red	29	111-3921	1	Connector-Switch, Pressure
13	09472	6	Washer-Plain	30	111-3893	1	Lead-Connector
14	09438	4	Nut-Nyloc	31	09430	12	Nut-Nyloc
15	09363	2	Screw-HH	32	ZCS1F025U	2	Screw
16	111-3764	2	Setscrew	33	111-5020	2	Reflector-Adhesive

Front Light Bracket Assembly



Front Light Bracket Assembly (continued)

<i>Ref.</i>	<i>Part Number</i>	<i>Qty.</i>	<i>Description</i>
1	111-5157-03	1	Support-Light, Front
2	111-5156-03	1	Bracket-Light, Front
3	111-5086-03	1	Bracket-Lights, Front
5	924633	2	Headlamp-Dip/Main
5:1	924632	1	Headlamp-Bulb
6	111-6177	2	Indicator-Light, Front
7	111-6176	2	Marker-Light, Front
8	111-8034	2	Cable-Headlamp
9	ZWP1H000U	4	Washer-Plain
10	09267	4	Washer

<i>Ref.</i>	<i>Part Number</i>	<i>Qty.</i>	<i>Description</i>
11	09441	4	Nut-Hex, NI
12	03162	4	Screw-HH
13	09470	24	Washer
14	ZDH1E020U	12	Screw-HH
15	09430	12	Nut-Nyloc
16	111-6174	2	Harness-Light, Front
17	ZWP1L000U	8	Washer-Plain
18	ZNN1L000U	4	Nut-Nyloc
19	ZDH1L035U	4	Screw-HH



Count on it.