

TORO®

PART NO. 93-7745

INSTALLATION INSTRUCTIONS

SHIELD KIT For Greens Aerator Model No. 09110

Helping you put quality into play.™

1. Disconnect spark plug wire from spark plug.
 2. Remove control panel cover.
 3. Release belt tension from V-belt between engine crankshaft and hydraulic pump. Remove belt from pulley.
 4. Loosen set screws securing pulley to engine crankshaft and remove pulley. Note position of pulley hub so that it may be reinstalled outboard on shaft.
 5. Install shield onto crankshaft.
 6. Reinstall pulley onto shaft with hub outboard. Tighten screws.
 7. Reinstall V-belt and align.
- IMPORTANT:** Make sure shield rotates freely on crankshaft with .030-.080" clearance between shield and pulley.
8. Reinstall control panel cover and make sure there is at least .060" clearance between pulley and opening in back of cover. Remove material from cover, if necessary, to attain clearance.
 9. Reinstall spark plug wire onto spark plug.

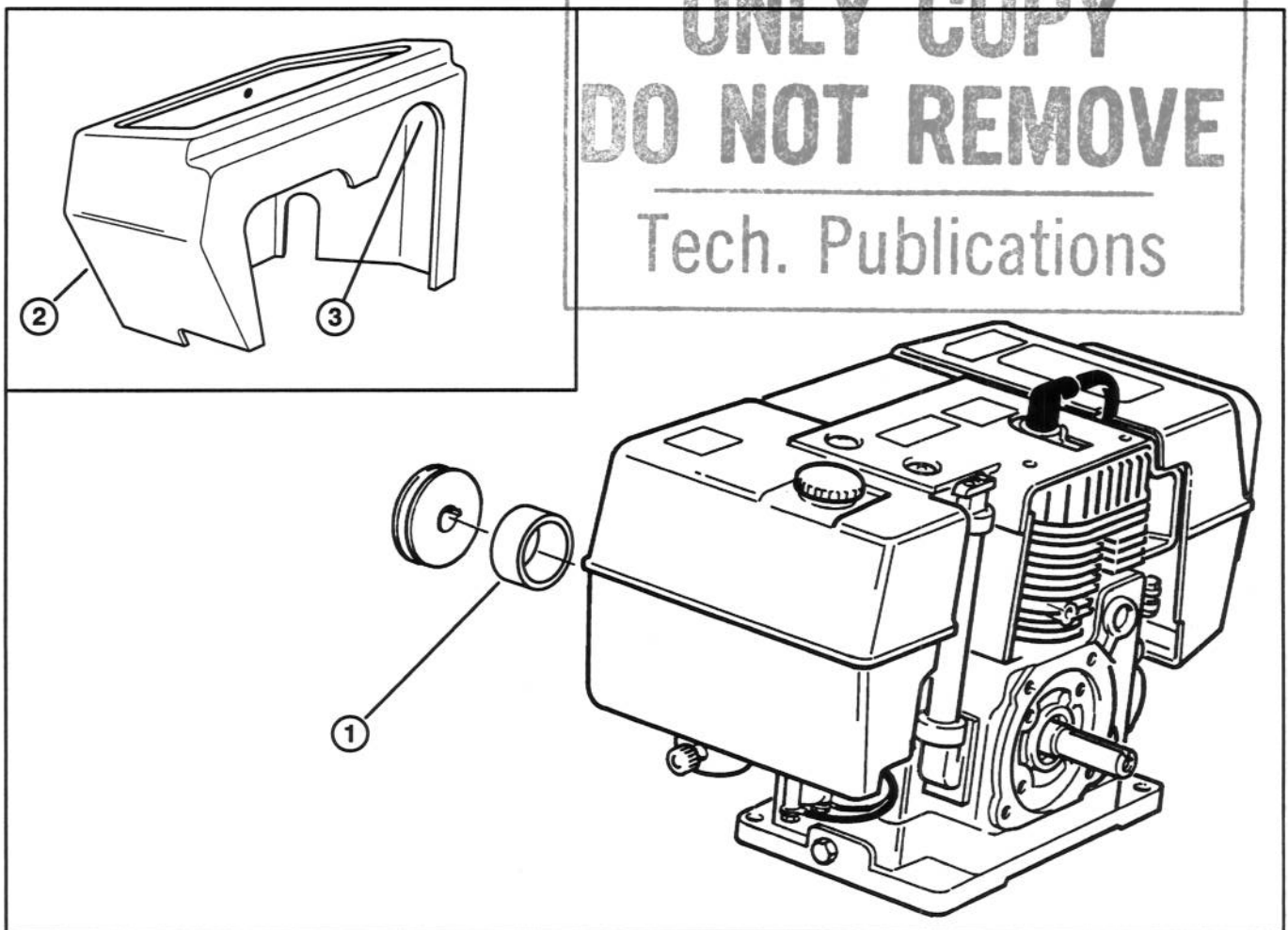


Figure 1

1. Shield
2. Control panel
3. .060 clearance here