



**Count on it.**

**Parts Catalog**

**55cm Recycler<sup>®</sup> SmartStow<sup>®</sup>  
Lawn Mower**

Model No. 20959—Serial No. 315000001 and Up



# Ordering Replacement Parts

To order replacement parts, please supply the part number, the quantity, and the description of each part desired.

## Understanding Reference Numbers

Each identified part in an illustration has a reference number. The reference number for a part also appears in the parts list, along with other information about the part.

This catalog uses two special reference number formats, one to indicate parts in a service assembly and another to indicate the quantity of a given part in an illustration.

## Service Assembly Reference Numbers

Parts in service assemblies have reference numbers in the form a:b. The a represents the reference number of the entire service assembly and the b represents a sequential number unique to each part within the service assembly.

For example, a wheel assembly might be identified by reference number 6, the tire by 6:1, the valve by 6:2, and the wheel by 6:3. When you order the assembly identified by reference number 6, you receive all parts identified by reference numbers 6:1, 6:2, and 6:3. However, you may also order any part individually. Reference numbers of this type appear in illustration and in parts lists.

## Reference Numbers Indicating Quantity

In an illustration, if a reference number indicates more than one part, the reference number has the form nX y. The n represents the quantity of the part, the X is the multiplication symbol, and the y represents the reference number.

For example, in an illustration, the reference number 2X 37 means that two of the parts identified by reference number 37 are indicated.

# List of Abbreviations

**AR:** as required

**ASM:** assembly

**BBC:** blade brake control

**BHTF:** button head thread forming

**CARR:** carriage

**CCW:** counter clockwise

**CW:** clockwise

**DEG:** degrees

**DPA:** Dual Point Adjustment

**ECM:** electronic control module

**EXT:** external

**FH:** flat head

**GA:** gauge

**HD:** heavy-duty

**HF:** hex flange

**HH:** hex head

**HHF:** hex head flange

**HHFTF:** hex head flange thread forming

**HJ:** hex jam

**HLH:** hex lag head

**HOC:** height-of-cut

**HP:** high pressure

**HSBH:** hex socket button head

**HSFH:** hex socket flat head

**HSH:** hex socket head

**HWH:** hex washer head

**HWHTF:** hex washer head thread forming

**HYD:** hydraulic

**LH:** left hand

**LP:** low pressure

**LPG:** Liquefied Petroleum Gas

**NI:** nylon insert

**NPTF:** national pipe thread fine

**PFH:** phillips flat head

**PPH:** phillips pan head

**PPHTF:** phillips pan head thread forming

**PRH:** phillips round head

**PTH:** phillips truss head

**PTO:** power-take-off

**RH:** right hand

**ROPS:** roll-over protection system

**RRB:** rear roller brush

**SFH:** slotted fillister head

**SHH:** slotted hex head

**SHWH:** slotted hex washer head

**SPH:** slotted pan head

**SQH:** square head

**SRH:** slotted round head

**STD:** standard

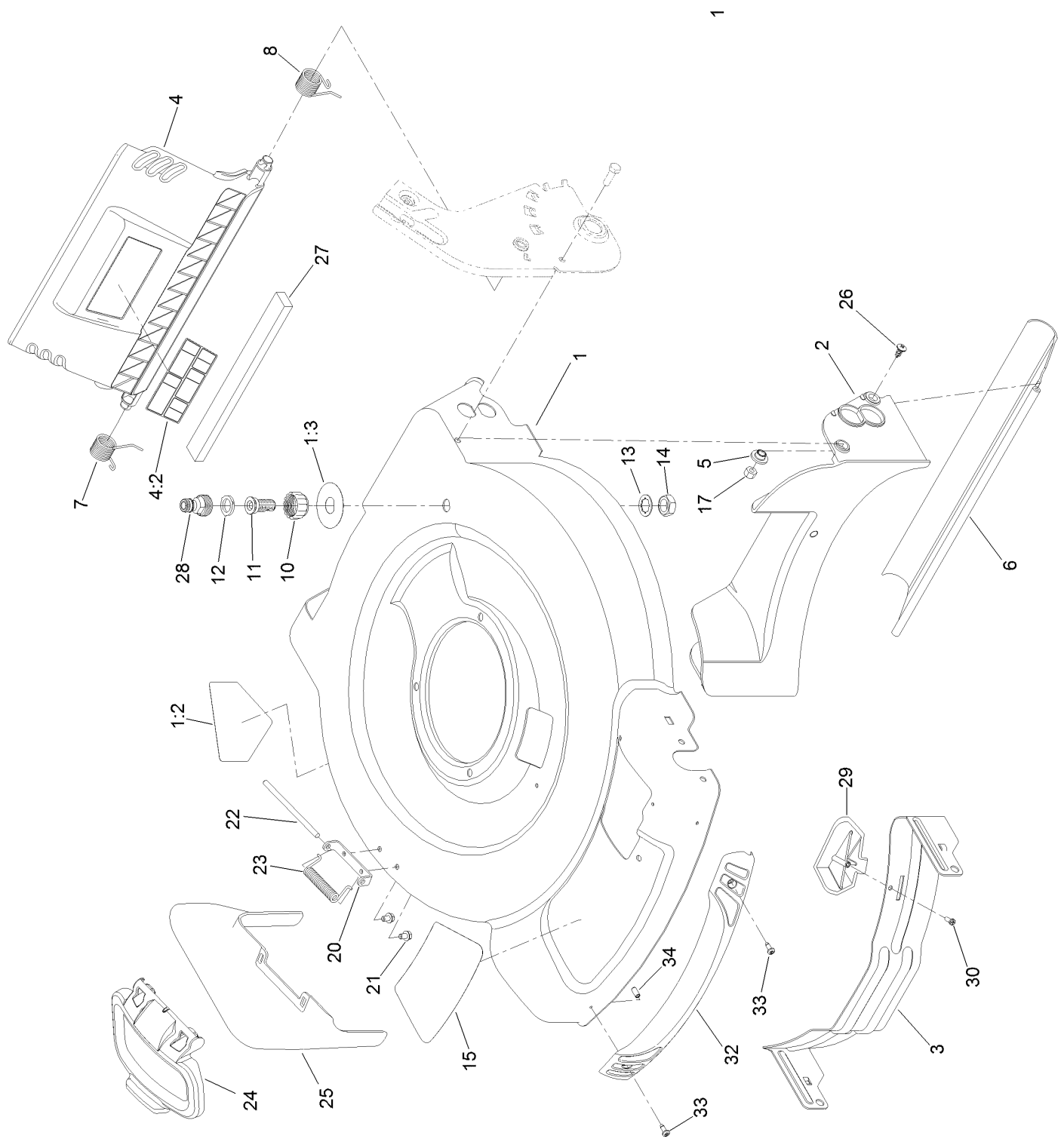
**TAP:** self tapping

**TTH:** torx truss head

# Contents

Deck, Side Chute and Rear Door Assembly .....	4
Rear Bag Assembly .....	6
Engine and Blade Assembly .....	8
Transmission and Front Wheel Drive Assembly .....	10
Height-of-Cut and Rear Wheel Assembly .....	12
Bag Attachment Assembly .....	14
Handle Assembly .....	16
Attachments and Accessories .....	18

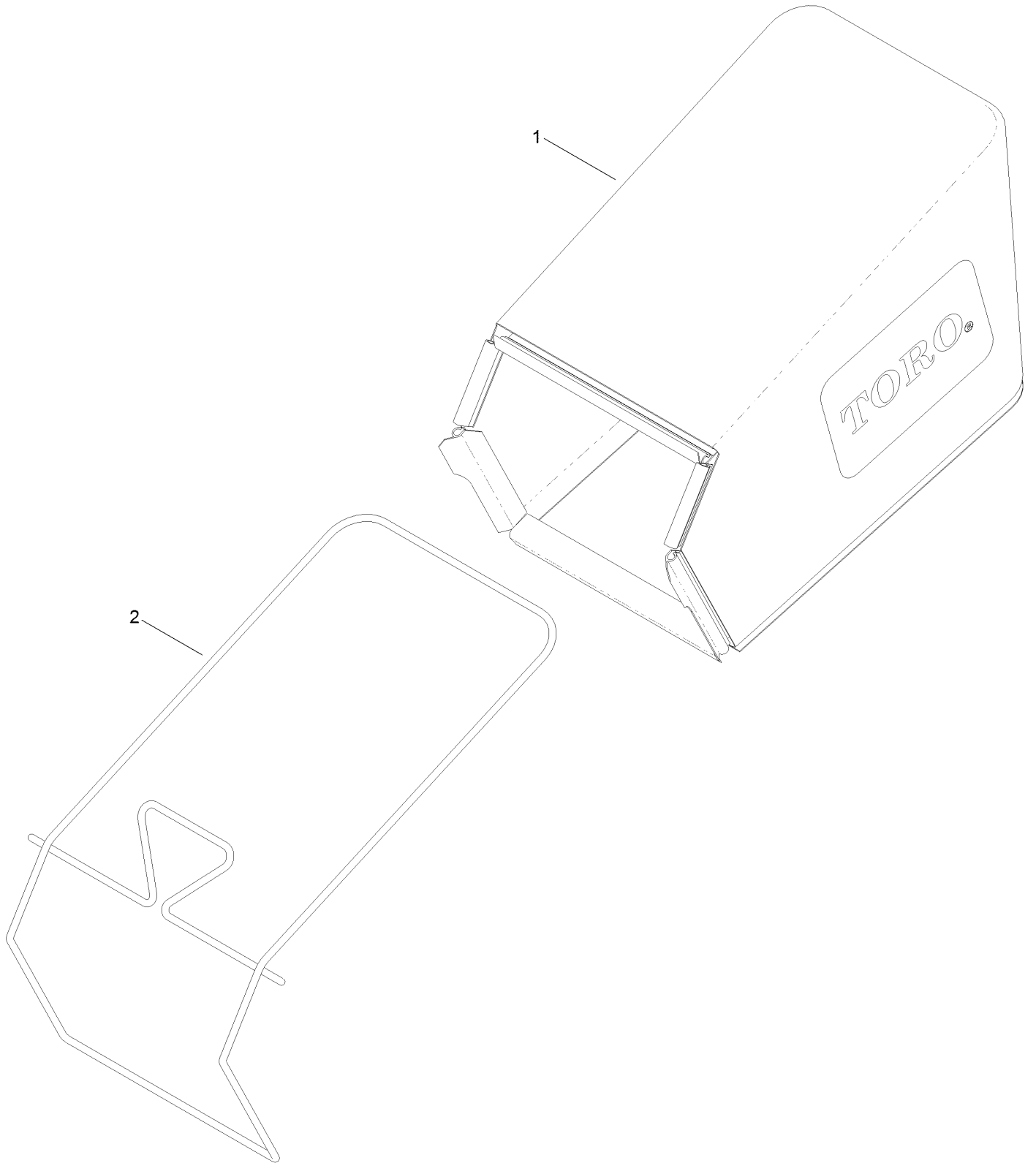
# Deck, Side Chute and Rear Door Assembly



## Deck, Side Chute and Rear Door Assembly (continued)

<i>Ref.</i>	<i>Part Number</i>	<i>Qty.</i>	<i>Description</i>	<i>Ref.</i>	<i>Part Number</i>	<i>Qty.</i>	<i>Description</i>
1	131-9678	1	Housing ASM	15	131-9679	1	Decal-Deck
1:2	112-8760	1	Decal-Danger	17	3296-29	2	Nut-Lock, NI
1:3	112-8867	1	Decal-Port, Washout	20	112-6416	1	Bracket-Cover
2	120-5218	1	Baffle-Rear	21	99-8445	2	Screw-HWH
3	115-4667-01	1	Baffle-Front	22	99-5291	1	Rod-Cover
4	117-4199	1	Rear Deflector ASM	23	99-5293	1	Spring-Torsion
4:2	131-4514	1	Decal-Warning	24	115-8449	1	Deflector-Side
5	117-5991	2	Washer-Stepped, Baffle	25	115-8447	1	Chute-Discharge, Side
6	115-8420	1	Shield-Trailing	26	117-1092	2	Screw-PTH
7	114-7924	1	Spring-Torsion	27	117-5924	1	Foam-Seal
8	115-2859	1	Spring-Torsion	28	112-6437	1	Adapter-Connect, Quick
10	112-6401	1	Coupling-Hose, Washout Port	29	115-4672	1	Kicker-Front
11	112-6400	1	Port-Washout	30	32144-111	1	Screw-PPH
12	112-6438	1	Washer-Seal, Washout Port	32	114-7987	1	Bumper
13	3254-5	1	Washer-Tooth, Internal	33	105-6849	2	Screw-Thread Forming
14	3218-6	1	Nut-Jam	34	130-6660	2	Cap-Plug

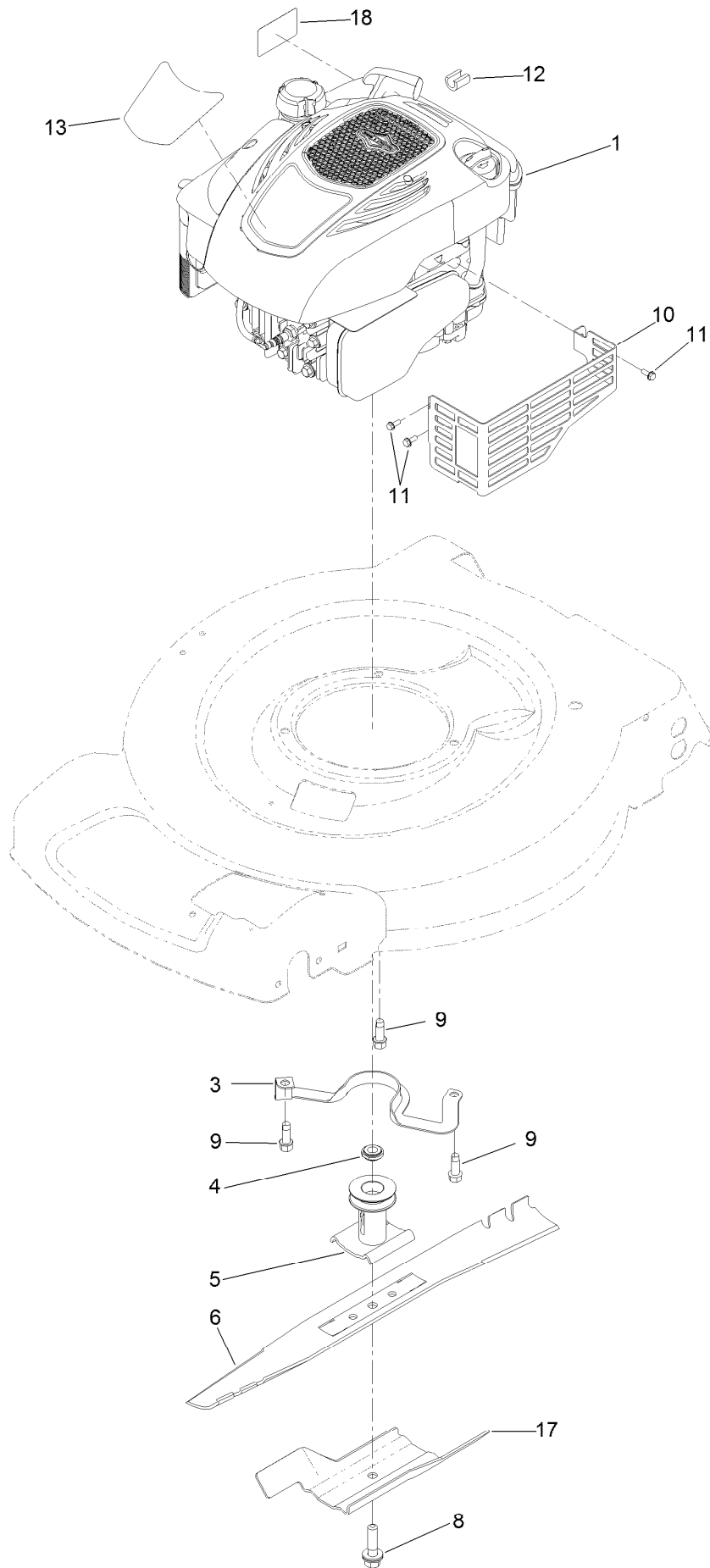
# Rear Bag Assembly



## Rear Bag Assembly (continued)

<i>Ref.</i>	<i>Part Number</i>	<i>Qty.</i>	<i>Description</i>
1	115-4664	1	Grass Bag ASM
2	114-2639-03	1	Frame-Bag

# Engine and Blade Assembly





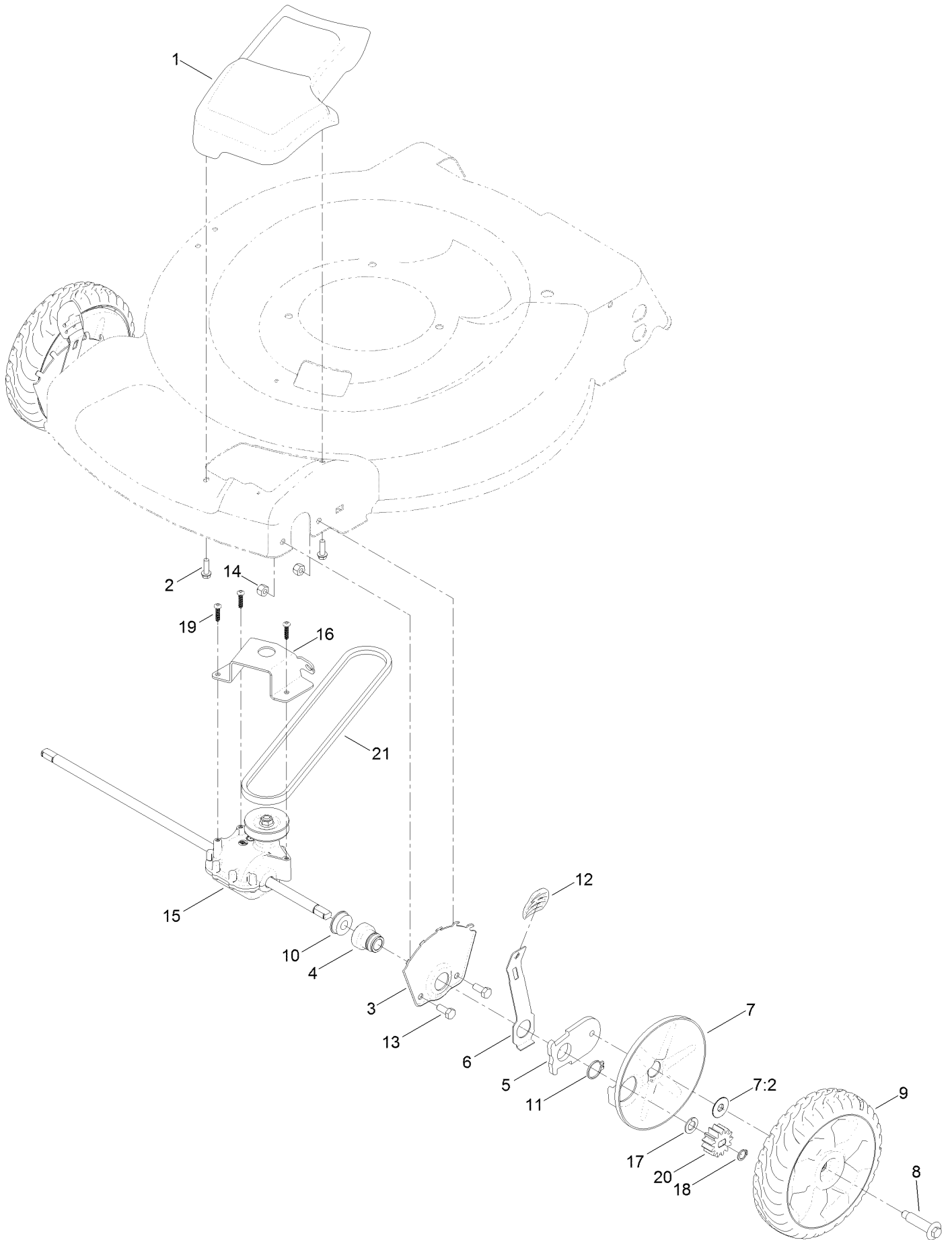
## Engine and Blade Assembly (continued)

<i>Ref.</i>	<i>Part Number</i>	<i>Qty.</i>	<i>Description</i>	<i>Ref.</i>	<i>Part Number</i>	<i>Qty.</i>	<i>Description</i>
1		1	Engine-Briggs, 126M020022F1 ●■	9	95-1726	3	Screw-Taptite
3	105-3031-03	1	Guide-Belt	10	104-7577-03	1	Shield-Muffler
4	106-3999	1	Spacer-Driver	11	32144-1	3	Screw-Taptite
5	106-3987	1	Driver-Blade	12	2210-316	1	Stop-Rope
6	131-4550-03	1	Blade	13	131-9672	1	Decal-Shroud
8	125-2466	1	Bolt-Blade	17	105-6848-03	1	Accelerator-Blade
				18	130-6662	1	Decal-Fuel Level

● Not serviced separately

■ Obtain parts from [www.briggsandstratton.com](http://www.briggsandstratton.com)

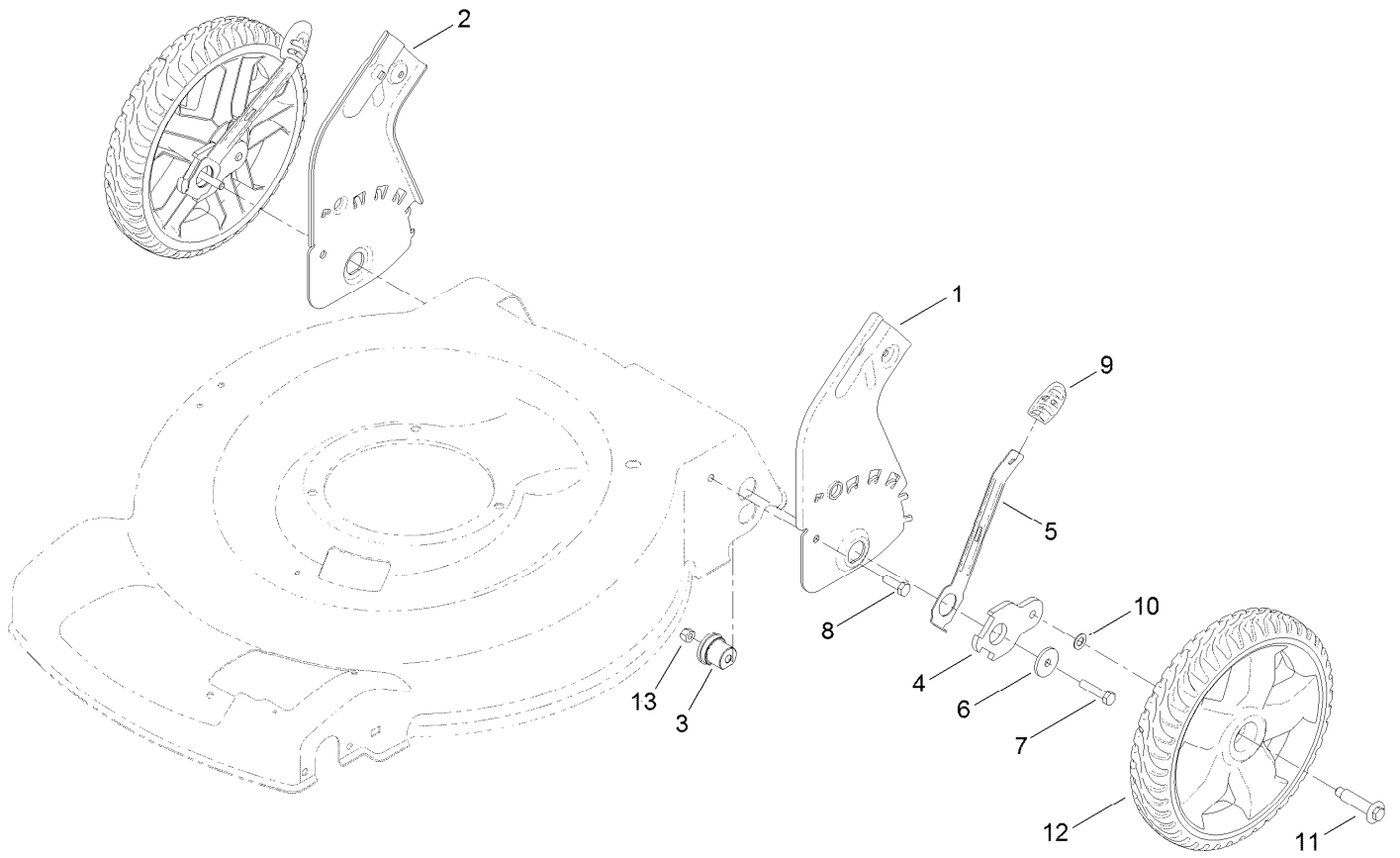
# Transmission and Front Wheel Drive Assembly



## Transmission and Front Wheel Drive Assembly (continued)

<i>Ref.</i>	<i>Part Number</i>	<i>Qty.</i>	<i>Description</i>	<i>Ref.</i>	<i>Part Number</i>	<i>Qty.</i>	<i>Description</i>
1	115-1305	1	Cover-Belt	11	32151-36	2	Ring-Retaining
2	46-8091	2	Screw-HWH	12	105-3042	2	Knob-Lever, HOC
3	115-1956-03	2	Plate-HOC, Front	13	322-3	4	Screw-HH
4	104-8698	2	Retainer-Bearing, HOC	14	3296-29	4	Nut-Lock, NI
5	105-1807	2	Arm-Pivot, Front	15	130-6733	1	Transmission ASM
6	105-1809	2	Arm-Spring	16	114-7978-03	1	Bracket-Transmission
7	110-1792	2	Wheel Cover ASM	17	110-7191	2	Washer-Thrust
7:2	614426	1	Washer-Stepped	18	32151-61	2	Ring-Retaining
8	614650	2	Bolt-Shoulder	19	108-7476	3	Screw-Plastite
9	119-0311	2	8 Inch Wheel ASM	20	115-4665	2	Gear-Pinion, 13T
10	104-8699	2	Bearing-Ball	21	117-1018	1	V-Belt

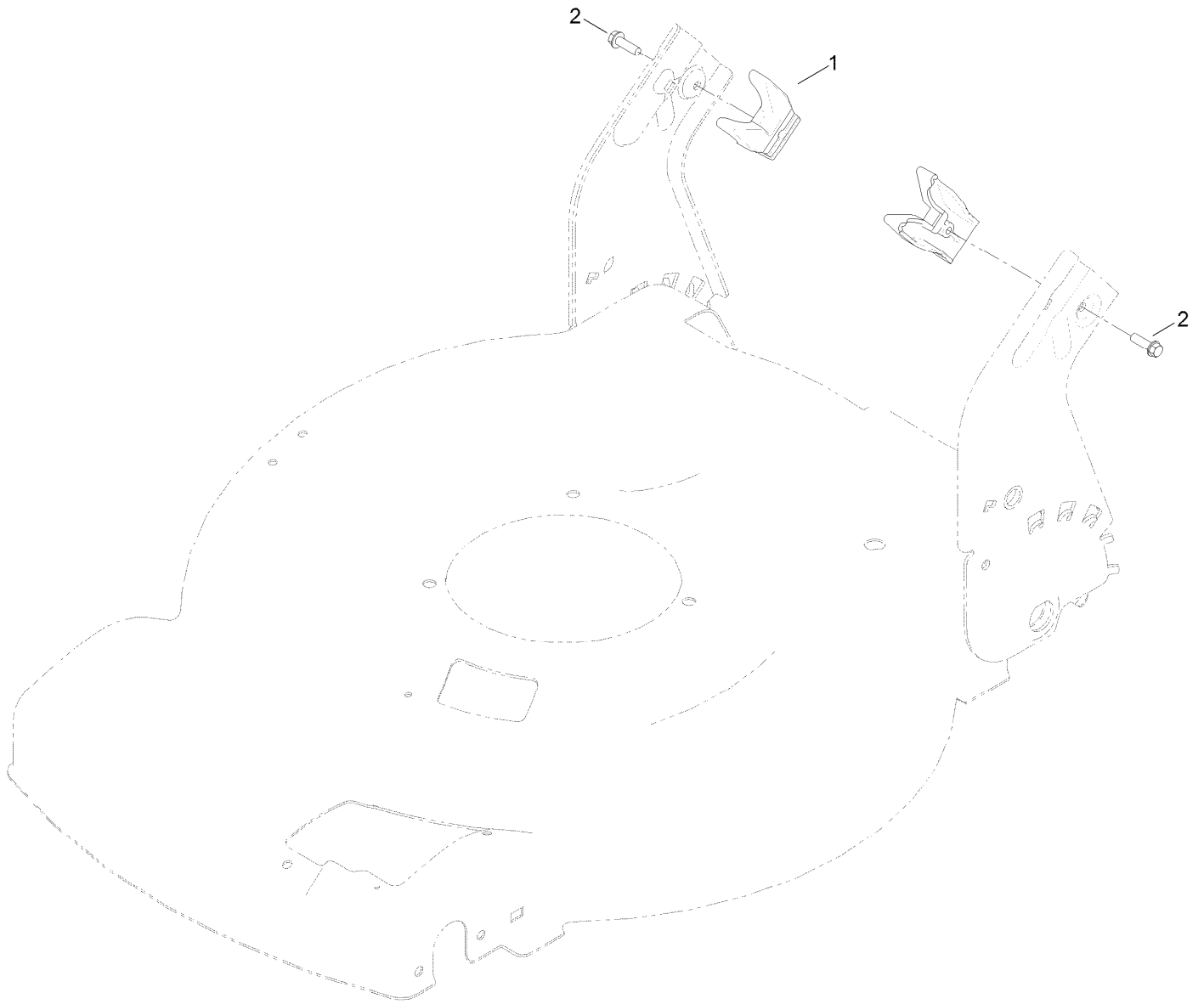
# Height-of-Cut and Rear Wheel Assembly



## Height-of-Cut and Rear Wheel Assembly (continued)

<i>Ref.</i>	<i>Part Number</i>	<i>Qty.</i>	<i>Description</i>	<i>Ref.</i>	<i>Part Number</i>	<i>Qty.</i>	<i>Description</i>
1	114-7993-03	1	Plate-HOC, Rear (LH)	8	322-5	2	Screw-HH
2	114-7994-03	1	Plate-HOC, Rear (RH)	9	105-3042	2	Knob-Lever, HOC
3	115-4651	2	Bushing-Mount, HOC	10	40-1940	2	Washer
4	114-7997	2	Arm-Pivot, Rear	11	614650	2	Bolt-Shoulder
5	115-2899	2	Arm-Spring, Rear	12	119-0313	2	11 Inch Wheel ASM
6	105-3048	2	Washer-Flat	13	3296-29	2	Nut-Lock, NI
7	322-7	2	Screw-HH				

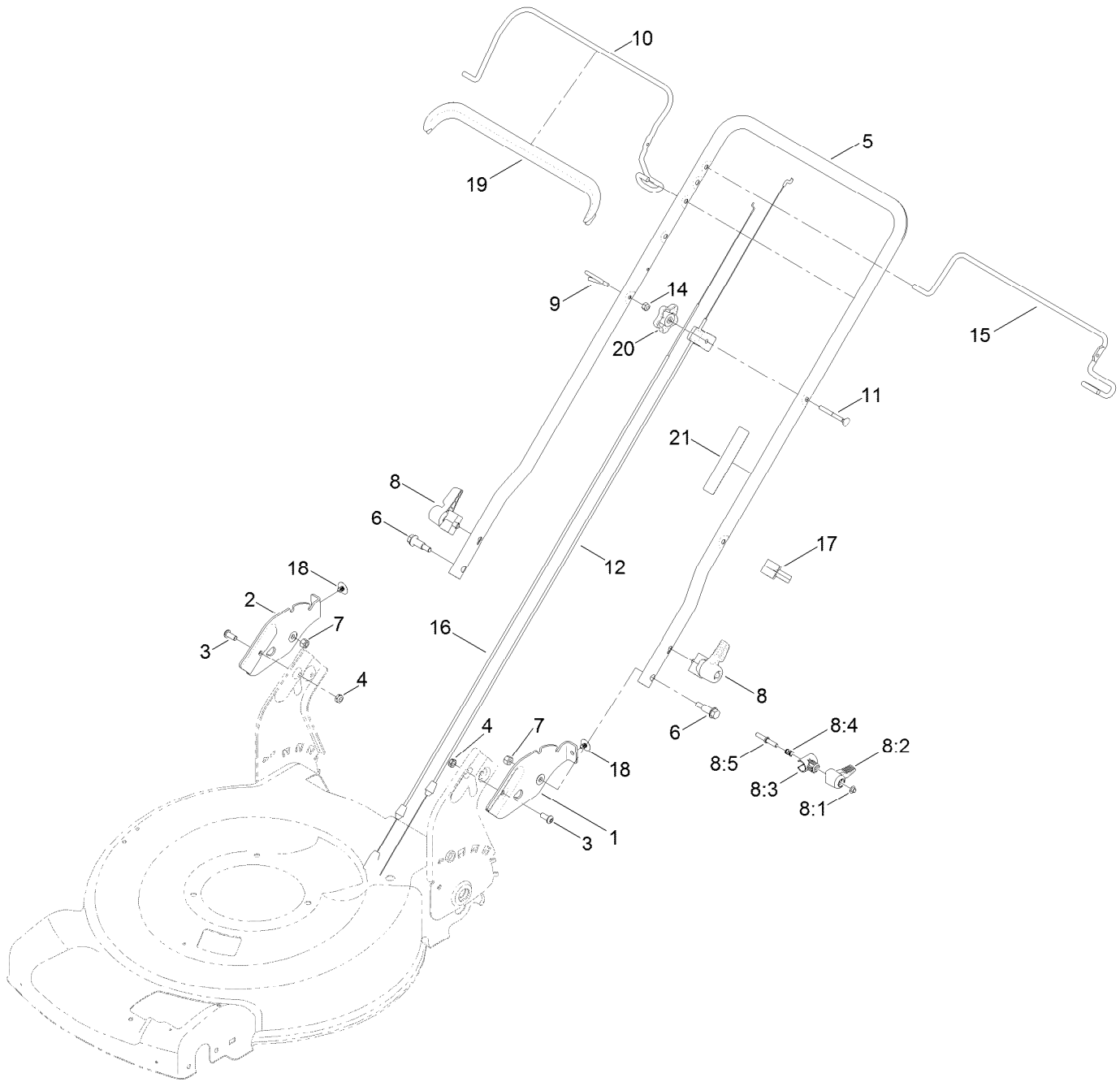
# Bag Attachment Assembly



## Bag Attachment Assembly (continued)

<i>Ref.</i>	<i>Part Number</i>	<i>Qty.</i>	<i>Description</i>
1	115-2866	2	Anchor-Bag
2	46-8091	2	Screw-HWH

# Handle Assembly





## Handle Assembly (continued)

<i>Ref.</i>	<i>Part Number</i>	<i>Qty.</i>	<i>Description</i>	<i>Ref.</i>	<i>Part Number</i>	<i>Qty.</i>	<i>Description</i>
1	127-6813-03	1	Plate-Handle, LH	9	86-9671	1	Guide-Rope
2	127-6814-03	1	Plate-Handle, RH	10	131-0821-03	1	Bail-Brake
3	3274-55	2	Screw-HSBH	11	92-2270	1	Screw-Handle
4	3296-47	2	Nut-Lock, NI	12	112-8818	1	Cable-Brake
5	131-0861-05	1	Handle	14	3296-73	1	Nut-Lock, NI
6	130-2344	2	Bolt-Shoulder	15	131-0835-03	1	Bail-Traction
7	3296-29	2	Nut-Lock, NI	16	119-2379	1	Cable-Traction
8	115-2860	2	Quick Release ASM	17	114-7988	1	Guide-Cable
8:1	109-0917	1	Nut-Push	18	130-6721	2	Clip-Tree
8:2	114-7995	1	Lever	19	127-6847	1	Cover-Bail
8:3	114-7996	1	Anchor-Spring	20	131-0897	1	Knob-Handle, Locking
8:4	115-2858	1	Spring-Compression	21	131-0894	1	Decal-Traction, Adjust
8:5	114-2675	1	Rod-Release				

# Attachments and Accessories

## For 20959 55cm Recycler SmartStow Lawn Mower

Product Name	Model/Part
Replacement Bag .....	59305
Replacement Bag and Frame Kit .....	59307

**Notes:**



**Count on it.**