



**Count on it.**

**Parts Catalog**

**EU Compliance Kit**

**2015 and After Multi Pro® 1750 Turf Sprayer**

Model No. 41155—Serial No. 315000001 and Up



# Ordering Replacement Parts

To order replacement parts, please supply the part number, the quantity, and the description of each part desired.

## Understanding Reference Numbers

Each identified part in an illustration has a reference number. The reference number for a part also appears in the parts list, along with other information about the part.

This catalog uses two special reference number formats, one to indicate parts in a service assembly and another to indicate the quantity of a given part in an illustration.

## Service Assembly Reference Numbers

Parts in service assemblies have reference numbers in the form a:b. The a represents the reference number of the entire service assembly and the b represents a sequential number unique to each part within the service assembly.

For example, a wheel assembly might be identified by reference number 6, the tire by 6:1, the valve by 6:2, and the wheel by 6:3. When you order the assembly identified by reference number 6, you receive all parts identified by reference numbers 6:1, 6:2, and 6:3. However, you may also order any part individually. Reference numbers of this type appear in illustration and in parts lists.

## Reference Numbers Indicating Quantity

In an illustration, if a reference number indicates more than one part, the reference number has the form nX y. The n represents the quantity of the part, the X is the multiplication symbol, and the y represents the reference number.

For example, in an illustration, the reference number 2X 37 means that two of the parts identified by reference number 37 are indicated.

# List of Abbreviations

**AR:** as required

**ASM:** assembly

**BBC:** blade brake control

**BHTF:** button head thread forming

**CARR:** carriage

**CCW:** counter clockwise

**CW:** clockwise

**DEG:** degrees

**DPA:** Dual Point Adjustment

**ECM:** electronic control module

**EXT:** external

**FH:** flat head

**GA:** gauge

**HD:** heavy-duty

**HF:** hex flange

**HH:** hex head

**HHF:** hex head flange

**HHFTF:** hex head flange thread forming

**HJ:** hex jam

**HLH:** hex lag head

**HOC:** height-of-cut

**HP:** high pressure

**HSBH:** hex socket button head

**HSFH:** hex socket flat head

**HSH:** hex socket head

**HWH:** hex washer head

**HWHTF:** hex washer head thread forming

**HYD:** hydraulic

**LH:** left hand

**LP:** low pressure

**LPG:** Liquefied Petroleum Gas

**NI:** nylon insert

**NPTF:** national pipe thread fine

**PFH:** phillips flat head

**PPH:** phillips pan head

**PPHTF:** phillips pan head thread forming

**PRH:** phillips round head

**PTH:** phillips truss head

**PTO:** power-take-off

**RH:** right hand

**ROPS:** roll-over protection system

**RRB:** rear roller brush

**SFH:** slotted fillister head

**SHH:** slotted hex head

**SHWH:** slotted hex washer head

**SPH:** slotted pan head

**SQH:** square head

**SRH:** slotted round head

**STD:** standard

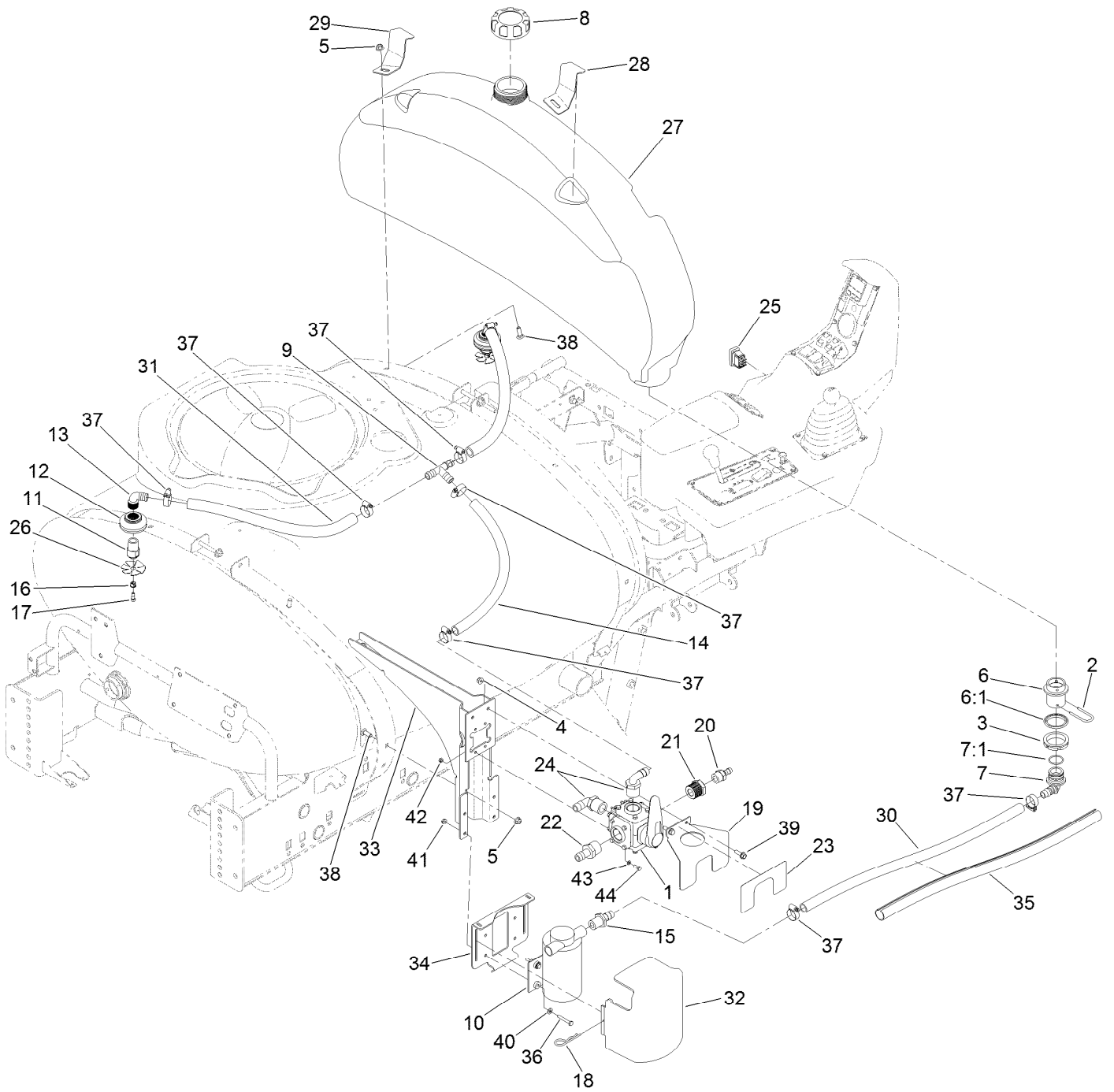
**TAP:** self tapping

**TTH:** torx truss head

# Contents

EU Compliance Kit . . . . . 4  
Spray Gun and Pressure Filter Assembly . . . . . 6  
Spray Gun Assembly No. 120-8610 . . . . . 8  
Pressure Filter Assembly No. 127-9726 . . . . . 10

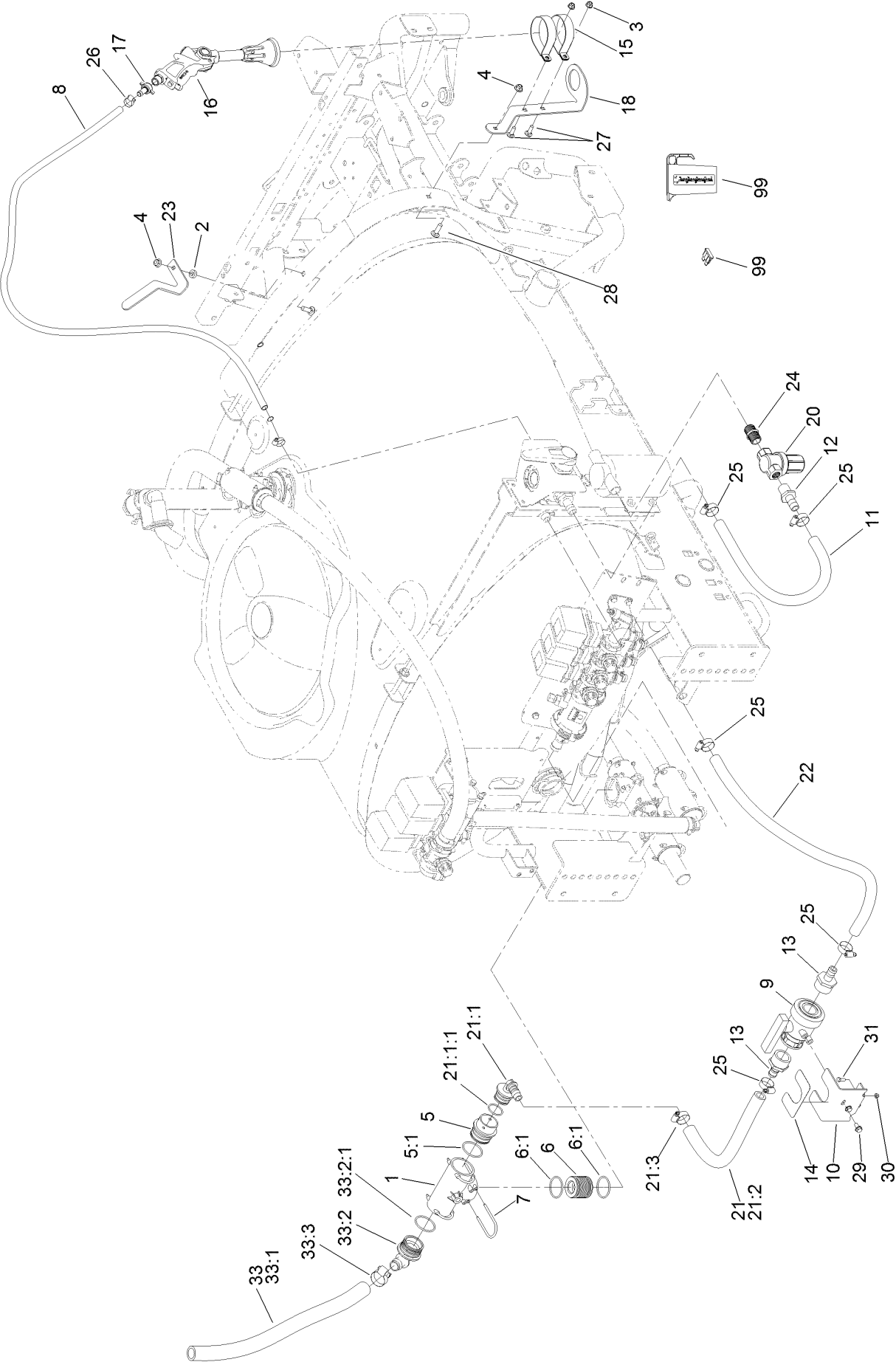
# EU Compliance Kit



## EU Compliance Kit (continued)

<i>Ref.</i>	<i>Part Number</i>	<i>Qty.</i>	<i>Description</i>	<i>Ref.</i>	<i>Part Number</i>	<i>Qty.</i>	<i>Description</i>
1	119-4980	1	Valve, 4-Way	23	120-0673	1	Decal-Selection
2	100-6708	1	Fork	24	120-0688	2	Hosebarb-90 DEG
3	100-6713	1	Nut-Bulkhead	25	120-0695	1	Switch-Rocker, On-Off-(On)
4	104-8300	2	Nut-Flange, NI	26	120-8635	2	Vain-Rinse
5	104-8301	3	Nut-Flange, NI	27	125-4072	1	Tank-Rinse, 17 Gallon
6	106-4896	1	Fitting-Bulkhead	28	125-4074-03	1	Bracket-Hold, Rinse Tank, RH
6:1	100-6710	1	Gasket-Bulkhead	29	125-4075-03	1	Bracket-Hold, Rinse Tank, LH
7	106-4940	1	Hosebarb-90 DEG	30	125-4148	1	Hose-Supply, Rinse
7:1	100-6712	1	O-Ring	31	125-4149	2	Hose-Supply, Rinse
8	107-8641	1	Cap-Water, Fresh	32	125-8085	1	Cover-Pump, Rinse
9	108-3439	1	Tee	33	127-3900-03	1	Valve-Mount, Welded
10	117-7872	1	Pump-Rinse	34	127-9762-03	1	Bracket-Mount, Rinse Pump
11	119-0479	2	Nozzle-Rinse	35	107-8650	1	Conduit-Convolutd
12	119-0489	2	Bulkhead	36	321-10	4	Screw-HH
13	119-0490	2	Elbow-Hosebarb	37	2412-129	8	Clamp-Hose
14	119-0493	1	Hose-Supply, Rinse	38	3231-22	3	Screw-CARR
15	119-0496	1	Hosebarb	39	3234-17	2	Screw-HHF
16	119-0528	2	Bushing	40	3256-22	4	Washer-Flat
17	119-4881	2	Bolt-Shoulder	41	32128-33	4	Nut-HF
18	9335044	2	Pin-Hair	42	33023-00	4	Nut-Lock
19	120-0657-03	1	Bracket	43	33093-00	4	Washer-Flat
20	120-0668	1	Hosebarb	44	33113-016	4	Screw-HH
21	120-0669	1	Reducer				
22	120-0670	1	Hosebarb				

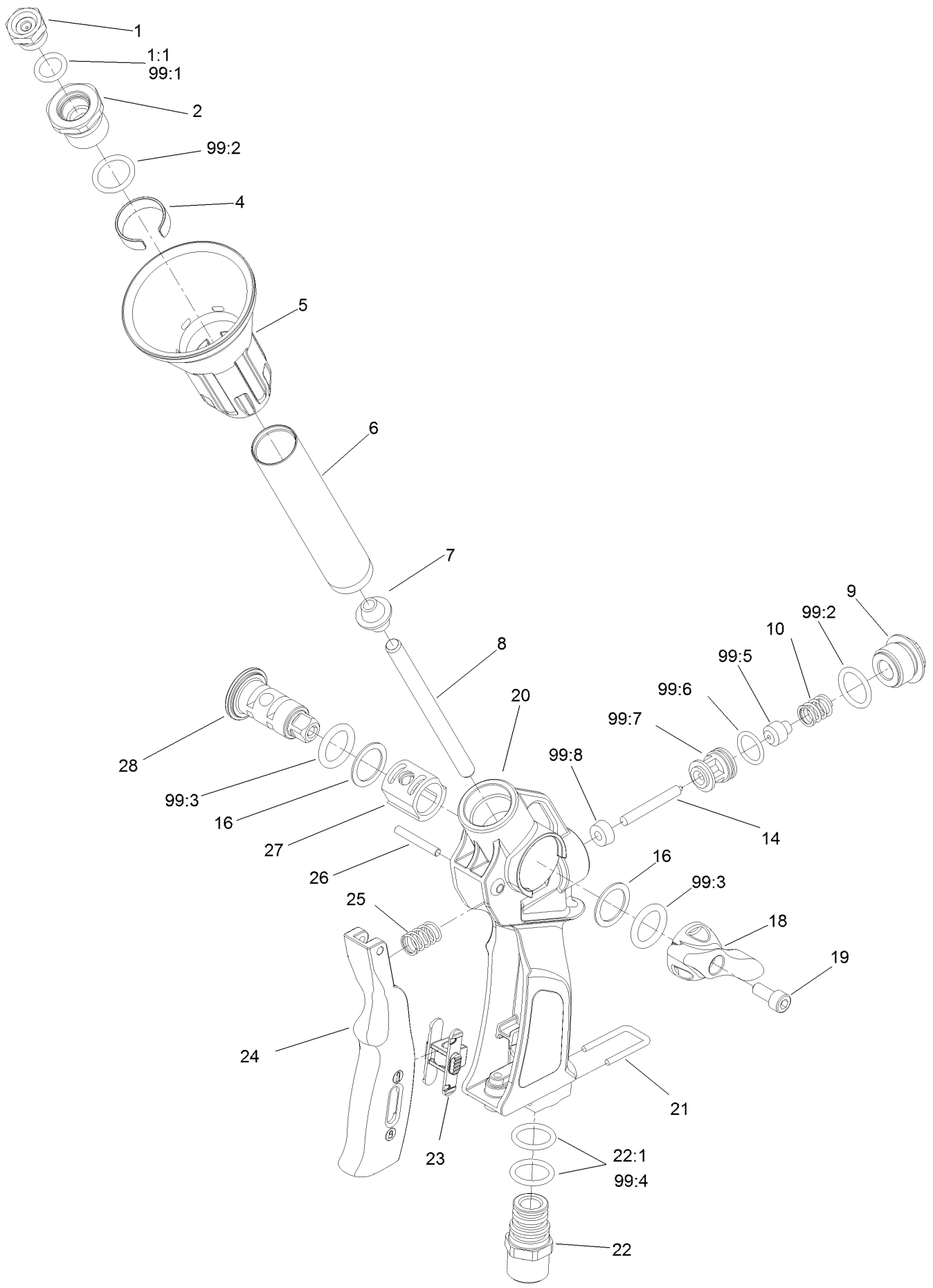
# Spray Gun and Pressure Filter Assembly



# Spray Gun and Pressure Filter Assembly (continued)

<i>Ref.</i>	<i>Part Number</i>	<i>Qty.</i>	<i>Description</i>	<i>Ref.</i>	<i>Part Number</i>	<i>Qty.</i>	<i>Description</i>
1	100-6704	1	Tee	21:1	106-4940	1	Hosebarb-90 DEG
2	104-1156	1	Spacer	21:1:1	100-6712	1	O-Ring
3	104-8300	2	Nut-Flange, NI	21:2	119-0493	1	Hose-Supply, Rinse
4	104-8301	2	Nut-Flange, NI	21:3	2412-129	1	Clamp-Hose
5	106-4938	1	Reducer ASM	22	127-9728	1	Hose, Eu Supply
5:1	100-8637	1	O-Ring	23	127-9729-03	1	Mount-Hose
6	106-4947	1	Connector	24	127-9730	1	Nipple
6:1	100-8637	2	O-Ring	25	2412-129	5	Clamp-Hose
7	100-8635	3	Fork	26	2412-36	2	Clamp-Hose
8	107-8751	1	Hose-Spray Gun	27	3230-2	2	Bolt-CARR
9	108-0069	1	Valve-Ball	28	3231-25	2	Bolt-CARR
10	119-0442-03	1	Bracket-Ball Valve	29	3234-7	2	Screw-HHF
11	119-0493	1	Hose-Supply, Rinse	30	33023-00	2	Nut-Lock
12	119-0496	1	Hosebarb	31	33113-016	2	Screw-HH
13	120-0652	2	Hosebarb	33	131-5835	1	Supply-Hose ASM
14	120-0687	1	Decal-Rinse Flow	33:1	131-5825	1	Hose-Drain
15	120-8592	2	Clamp-R	33:2	106-4933	1	Hosebarb ASM
16	120-8610	1	Spray Gun ASM	33:2:1	100-8637	1	O-Ring
17	121-4982	1	Hosebarb-Spray Gun	33:3	2412-34	1	Clamp-Hose
18	125-8087-03	1	Bracket-Hand Spray Gun	99	112-7929	1	Beaker-Plastic
20	127-9726	1	Pressure Filter ASM	99	99-6124	1	Fuse-40 Amp
21	127-9727	1	Eu Main Hose ASM				

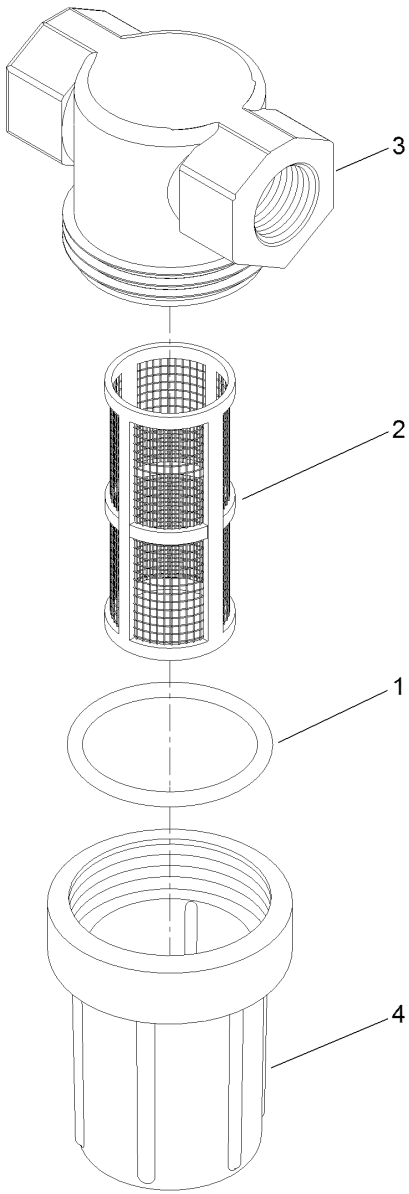
# Spray Gun Assembly No. 120-8610



## Spray Gun Assembly No. 120-8610 (continued)

<i>Ref.</i>	<i>Part Number</i>	<i>Qty.</i>	<i>Description</i>	<i>Ref.</i>	<i>Part Number</i>	<i>Qty.</i>	<i>Description</i>
1	121-4950	1	Nozzle-2.3Mm	22:1	121-4972	2	O-Ring
1:1	121-4951	1	O-Ring	23	121-4974	1	Slide-Lever
2	121-4952	1	Head-Nozzle Holder	24	121-4975	1	Lever-Spraygun
4	121-4954	1	Ring-Spacer	25	121-4977	1	Spring
5	121-4955	1	Spreader-Micro Jet	26	121-4978	1	Pin-Lever
6	121-4956	1	Tube-Spray Gun	27	121-4979	1	Cover-Drum
7	121-4957	1	Conveyor-Inner	28	121-4980	1	Drum-Regulation
8	121-4958	1	Tube-Spray Gun, Inner	99	121-4981	1	Spray Gun Seal Kit ●
9	121-4959	1	Drum-Regulation	99:1	121-4951	1	O-Ring
10	121-4960	1	Spring-Spray Gun	99:2	121-4953	2	Gasket
14	121-4964	1	Pin-Hinge	99:3	121-4967	2	O-Ring
16	121-4966	2	Washer-Teflon	99:4	121-4972	2	O-Ring
18	121-4968	1	Lever-Drum, Spray Gun	99:5	121-4962	1	Plunger-Cone
19	121-4969	1	Screw	99:6	121-4961	1	O-Ring
20	121-4970	1	Grip-Spray Gun	99:7	121-4963	1	Box And Seat
21	121-4971	1	Fork	99:8	121-4965	1	Seal
22	121-4973	1	Hose-Tail				

● Not illustrated



## Pressure Filter Assembly No. 127-9726

<i>Ref.</i>	<i>Part Number</i>	<i>Qty.</i>	<i>Description</i>
1	127-9722	1	Seal-Filter
2	127-9723	1	Screen-Filter
3	127-9724	1	Head-Filter
4	127-9725	1	Body-Filter

**Notes:**



**Count on it.**