



Hand Spray Gun Kit

2014 and Before Multi-Pro 5800 Turf Sprayer

Model No. 41605—Serial No. 315000001 and Up

Installation Instructions

The hand spray gun kit is an attachment for a turf spray application vehicle and is intended to be used by professional, hired operators in commercial applications. It is primarily designed for spraying on well-maintained lawns in parks, golf courses, sports fields, and on commercial grounds.

This product complies with all relevant European directives. For details, please see the Declaration of Incorporation (DOI) at the back of this publication.

⚠ WARNING

CALIFORNIA Proposition 65 Warning

This product contains a chemical or chemicals known to the State of California to cause cancer, birth defects, or reproductive harm.

Use of this product may cause exposure to chemicals known to the State of California to cause cancer, birth defects, or other reproductive harm.

Read this manual carefully to learn how to operate and maintain your product properly. The information in this manual can help you and others avoid injury and product damage. Although Toro designs and produces safe products, you are responsible for operating the product properly and safely.

You may contact Toro directly at www.Toro.com for product safety and operation training materials, accessory information, help finding a dealer, or to register your product.

Whenever you need service, genuine Toro parts, or additional information, contact an Authorized Service Dealer or Toro Customer Service and have the model and serial numbers of

your product ready. [Figure 1](#) illustrates the location of the model and serial numbers on the product.

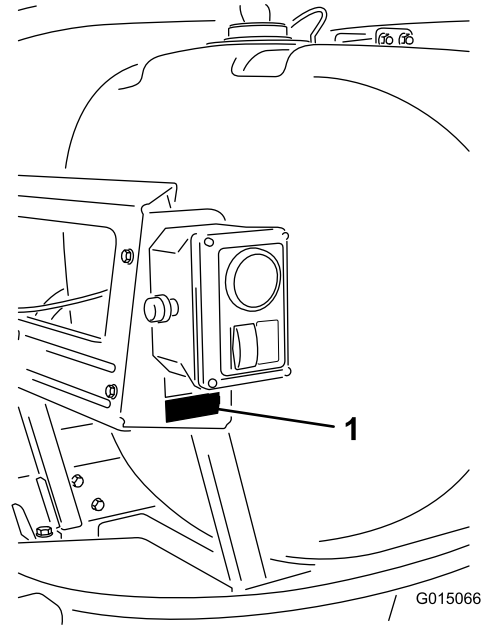


Figure 1

1. Model and serial number plate

Model No. _____

Serial No. _____

Safety

This manual identifies potential hazards and has safety messages identified by the safety alert symbol ([Figure 2](#)), which signals a hazard that may cause serious injury or death if you do not follow the recommended precautions.



Figure 2

1. Safety alert symbol

This manual uses 2 words to highlight information. **Important** calls attention to special mechanical information



and **Note** emphasizes general information worthy of special attention.

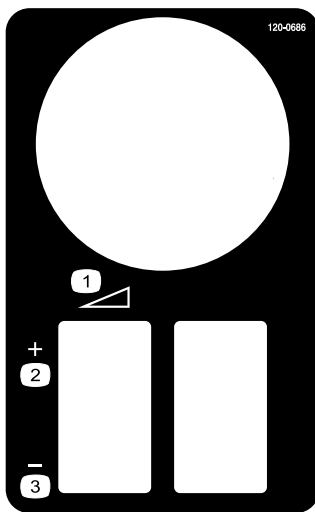
Read also the safety and operation instructions in the vehicle *Operator's Manual*.

- Do not aim the hand sprayer at any person or animal. Fluids under high pressure can penetrate skin and cause severe injury, possibly resulting in amputation or death. Hot liquids and chemicals can also cause burns or injury. If any part of the body comes in contact with the spray stream, immediately consult a physician familiar with injected fluid injuries.
- Do not place your hand or any other part of your body in front of the spray nozzle.
- Do not leave the equipment under pressure when you are not present.
- Do not use the hand sprayer if the hose, trigger lock, nozzle, or any other part is damaged or missing.
- Do not use the hand sprayer if there are any leaks in any hoses, fittings, or other components.
- Do not spray near power lines; the spray stream could contact the power lines and give you a potentially fatal electrical shock.
- Do not drive while spraying with a hand sprayer.
- Wear rubber gloves, safety goggles, and a full-body protective suit when spraying chemicals with the hand sprayer.
- Lightning can cause severe injury or death. If lightning is seen or thunder is heard in the area, do not operate the machine; seek shelter.

Safety and Instructional Decals



Safety decals and instructions are easily visible to the operator and are located near any area of potential danger. Replace any decal that is damaged or lost.



120-0686

1. Continuous variable setting
2. Increase
3. Decrease

Installation

Loose Parts

Use the chart below to verify that all parts have been shipped.

Procedure	Description	Qty.	Use
1	No parts required	–	Prepare the machine.
2	Hose hook Spray-gun bracket assembly Washer (3/8 inch) Locknut (5/16 inch) Carriage bolt	1 1 2 2 2	Installing the hose hooks.
3	Manual valve assembly Threaded rod Locknut Washer Jam nut	1 4 8 6 8	Install the valve assembly.
4	Control box and bracket assembly Bolt (1/4 x 5/8 inch) Locknut (1/4 inch)	1 3 3	Install the control box.
5	Hose Hose clamp	1 2	Install the supply hose.
6	Long hose with fitting Spray gun Hose clamp, small	1 1 1	Connect the spray hose.

Note: Determine the left and right sides of the machine from the normal operating position.

Note: Thread sealing tape is used in the installation of this kit.

1

Preparing the Machine

No Parts Required

Procedure

1. Ensure that the machine is empty of all fluids. If chemicals have been used in the machine, flush the system thoroughly with clean water and drain the water; refer to your vehicle *Operator's Manual* for instructions.
2. Disconnect the negative battery terminal from the battery.

2

Installing the Hose Hook and Spray-Gun Bracket Assembly

Parts needed for this procedure:

1	Hose hook
1	Spray-gun bracket assembly
2	Washer (3/8 inch)
2	Locknut (5/16 inch)
2	Carriage bolt

Procedure

1. Loosen the front tank strap on the right hand side (Figure 3).

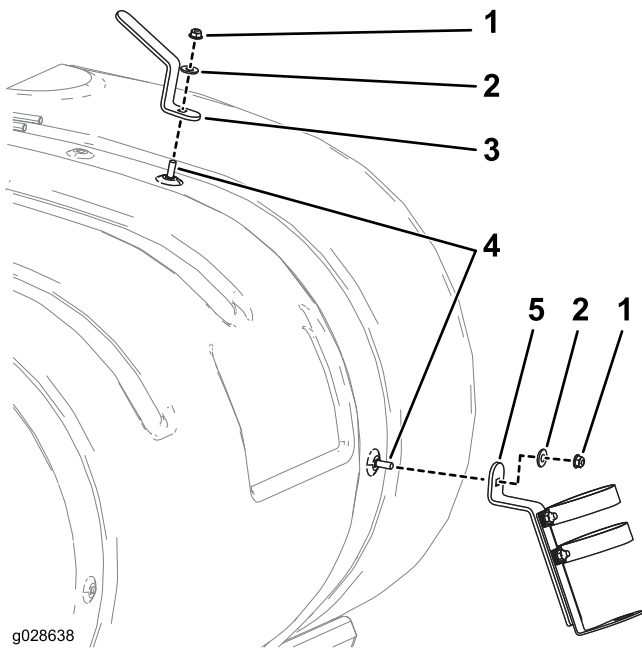


Figure 3

1. Locknut (5/16 inch)
2. Washer (3/8 inch)
3. Hose hook
4. Carriage bolt (5/16 x 3/4 inch) (2)
5. Spray-gun bracket assembly

2. Install the spray-gun bracket assembly as shown in [Figure 3](#) using a carriage bolt (5/16 x 3/4 inch), a washer (3/8 inch), and a locknut (5/16 inch).
3. Install the hose hook as shown in [Figure 3](#) using a carriage bolt (5/16 x 3/4 inch), a washer (3/8 inch), and a locknut (5/16 inch).

3

Installing the Manual Valve

Parts needed for this procedure:

1	Manual valve assembly
4	Threaded rod
8	Locknut
6	Washer
8	Jam nut

Procedure

1. Loosen, but do not remove, the bolts that secure the boom valve assembly to the right-hand mount bracket ([Figure 4](#)).

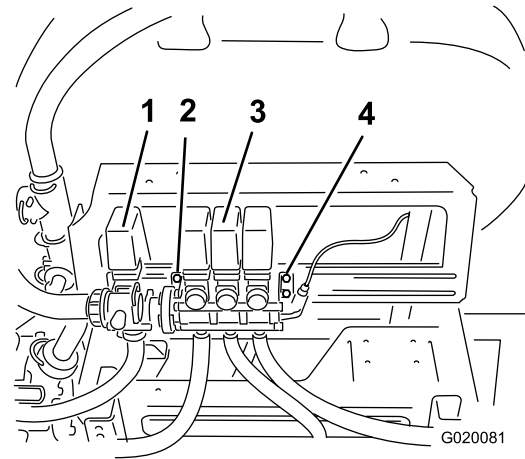


Figure 4

1. Agitation valve
2. Left-hand mount bracket
3. Bypass valve assembly
4. Right-hand mount bracket

2. Secure the boom valves together with 2 cable ties from loose parts, and remove the right-hand bracket.

Note: As an alternative to this step, you may wish to remove the boom hoses from the valves and move the entire assembly to a workbench.

3. Remove the long bolts and fasteners that secure the valve assembly ([Figure 5](#)).

Note: Discard the long bolts, but retain the washers and locknuts.

Note: The valve assembly will no longer be anchored to the machine at this point.

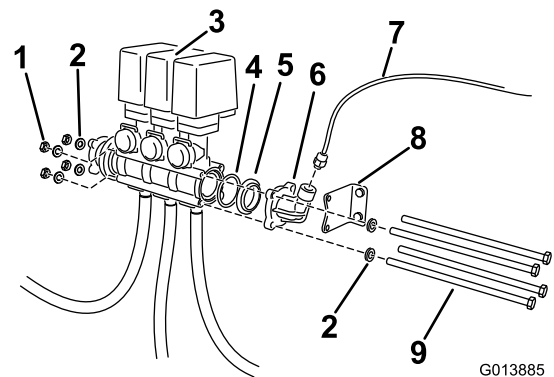


Figure 5

1. Locknut
2. Washer
3. Valve assembly
4. O-ring
5. Male to male adapter
6. Pressure gauge port
7. Red tube
8. Right-hand mount bracket
9. Long bolts, existing

4. Remove the pressure gauge port and the male to male adapter ([Figure 5](#)).

Note: Save these parts for installing the manual valve.

5. Move the right-hand mount bracket away from the existing valve assembly.

6. If the existing O-ring is not seated in the open end of the boom valve body, install it now.
7. Install the male to male adapter that you removed in step 4.
8. Insert the threaded rods through the holes in the valve bodies of the boom bypass valves, and for the 2 rods closest to the mounting rail, through the left-hand mount bracket (Figure 4 and Figure 6).

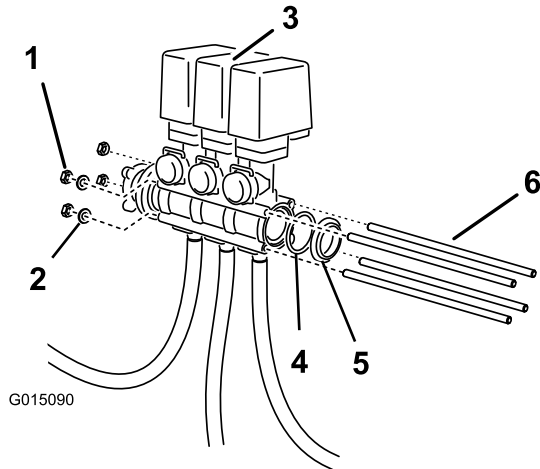


Figure 6

- | | |
|-------------------|---------------------|
| 1. Locknut (4) | 4. O-ring |
| 2. Washer (2) | 5. Adapter |
| 3. Valve assembly | 6. Threaded rod (4) |

9. Slip washers onto the rods that do not go through the left-hand mount bracket, and thread a locknut on the left-hand end of every rod (Figure 7).

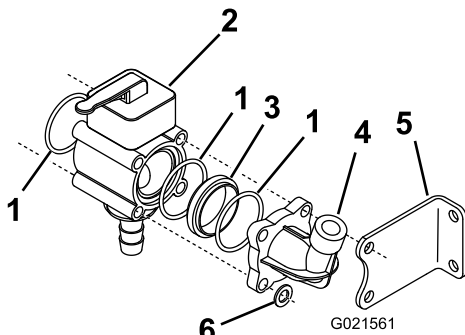


Figure 7

- | | |
|-----------------------|-----------------------------|
| 1. O-ring | 4. Elbow cap (existing) |
| 2. Manual valve | 5. Mount bracket (existing) |
| 3. Adapter (existing) | 6. Washer (existing) |

10. Pre-assemble the manual valve manifold assembly using the manual valve, an O-ring, an adapter from loose parts, an O-ring, and the pressure gauge port that you previously removed (Figure 7).

Note: You will need an O-ring from the loose parts bag.

Note: Install the elbow that you previously removed with the bend pointing upward.

11. Position the right-hand mount bracket in place.
12. Install a washer and 2 jam nuts on the right-hand end of each of the 4 threaded rods to secure the reducing adapter to the boom bypass valve assembly (Figure 7).
13. Torque all fasteners to 4.5 N-m (32–40 lb-inches).
14. Secure the bolts of the right-hand mount bracket to the mounting rail.
15. If the tee fitting is not connected to the elbow cap, install the tee fitting.

Note: Position the tee fitting so that the side port faces the tank.

- A. Remove the reducer fitting that secures the red pressure gauge tube to the elbow adapter.
- B. Install the reducer fitting that you removed in the previous step to the top port the tee fitting.
- C. Install the red pressure gauge tube.

4

Installing the Control Box

Parts needed for this procedure:

1	Control box and bracket assembly
3	Bolt (1/4 x 5/8 inch)
3	Locknut (1/4 inch)

Procedure

1. Locate the control box and bracket assembly in loose parts.
2. Install the assembly to the mount bracket using 3 bolts (1/4 x 5/8 inch) and 3 locknuts (1/4 inch) as shown in Figure 8.

5

Installing the Supply Hose

Parts needed for this procedure:

1	Hose
2	Hose clamp

Procedure

1. Slide a hose clamp over the open end of the hose and install the hose over the exposed barb in the manual valve.

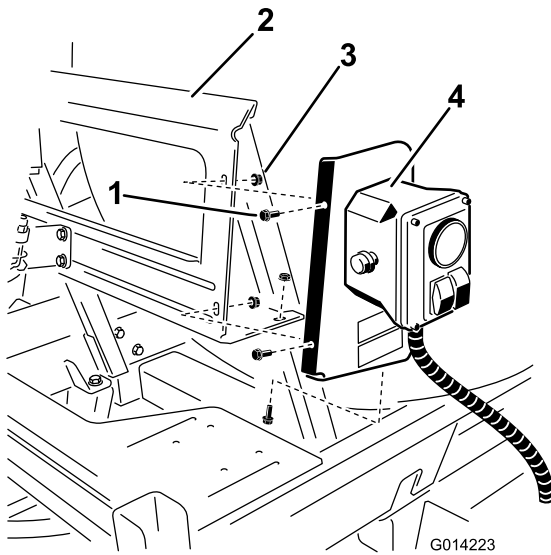


Figure 8

1. Bolt (3)
2. Mount bracket
3. Locknut (3)
4. Control box and bracket

3. Locate the red (pressure gauge) tube coming from the back of the control box and install it to the opening in the tee fitting (Figure 9).

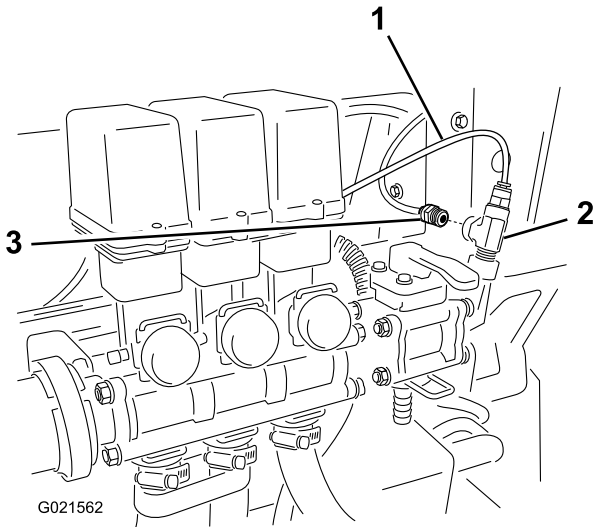


Figure 9

1. Pressure gauge tube from control box
2. Tee fitting
3. Reducer fitting

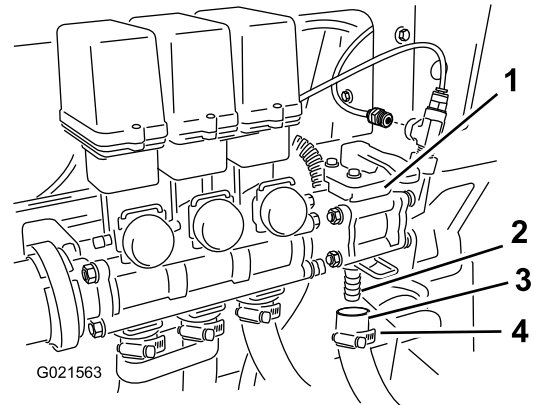


Figure 10

1. Manual valve
2. Barb
3. Hose
4. Hose clamp

2. Move the hose clamp over the barb and tighten to secure the hose to the valve assembly.

6

Connecting the Spray Hose

Parts needed for this procedure:

1	Long hose with fitting
1	Spray gun
1	Hose clamp, small

Procedure

1. Connect the free end of the long hose to the fitting on the spray gun ([Figure 11](#)).

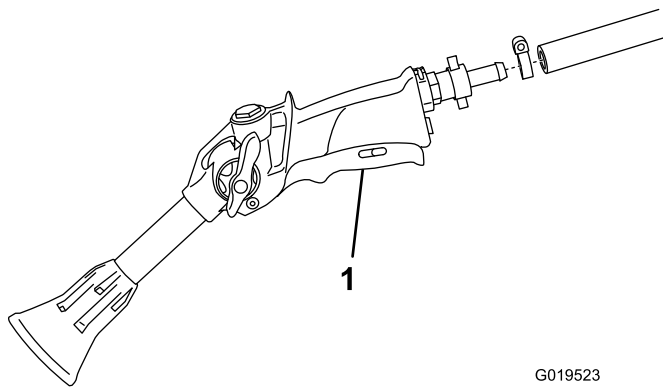


Figure 11

1. Spray gun

2. Secure the end of the hose with a small hose clamp.
3. Wrap the hose around the hooks of the tank and secure the gun as shown in [Figure 12](#).

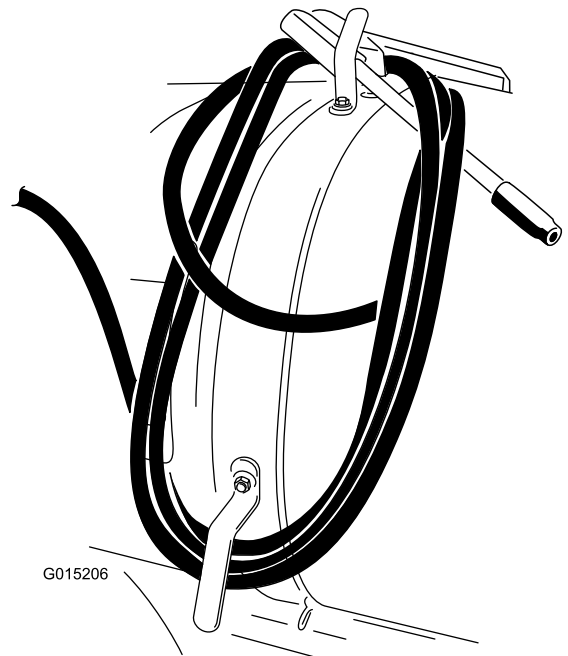


Figure 12

4. Connect the negative battery wire to the battery.

7

Installing the Electrical Harness

No Parts Required

Procedure

Locate the electrical harness coming from the control box, and connect the harness to the harness plug labeled “hose reel.”

Operation

⚠ WARNING

Fluid under pressure can penetrate skin and cause injury.

- Keep your body and hands away from nozzles that eject high pressure fluid.
- Do not aim the sprayer at any person or animal.
- Ensure that all fluid hoses and lines are in good condition and all connections and fittings are tight before applying pressure to the system.
- Use cardboard or paper to find leaks.
- Safely relieve all pressure in the system before performing any work on it.
- Get immediate medical help if fluid is injected into the skin.
- Hot liquids and chemicals can cause burns or other harm.

Turf Care Precautions while Operating in Stationary Modes

Important: Under some conditions, heat from the engine, radiator, and muffler can potentially damage the grass when operating the sprayer in a stationary mode. Stationary modes include tank agitation, hand spraying, or using a walking boom.

Use the following precautions:

- **Avoid** stationary spraying when conditions are very hot and/or dry, as turf can be more stressed during these periods.
- **Avoid** parking on the turf while stationary spraying. Park on a cart path whenever possible.
- **Minimize** the amount of time the machine is left running over any particular area of turf. Both time and temperature affect how much the grass may be damaged.
- **Set the engine speed as low as possible** to achieve the desired pressure and flow. This will minimize the heat generated and the air velocity from the cooling fan.
- **Allow heat to escape** upward from the engine compartment by raising the engine guard/seat assemblies during stationary operation rather than being forced out under the vehicle. Refer to your *Operator's Manual* for more information on raising the seat assemblies.

Note: Use a heat shield blanket underneath the vehicle during stationary operation if you desire additional heat protection. Contact an Authorized Toro Dealer to obtain a Toro heat shield blanket kit for turf sprayers.

Switching from Boom Spray Mode to Hand Spray Mode

1. Stop the machine and set the parking brake.

⚠ WARNING

Driving while using the hand sprayer can cause loss of control, resulting in injury or death. Do not operate the hand sprayer while driving.

2. Set the throttle 25 percent of the way toward the Fast position.
3. Ensure that the pump switch is on and the Pro Control™ (if applicable) is set in the manual position.
4. Ensure that the trigger lock on the spray gun is locked.
5. Lift up the lever.

Note: The level of performance experienced by the operator is dependant upon accessory pressure required, accessory speed and other adjustable variables. For most reasonable settings, attachments will meet and exceed operator requirements. Please consult your nozzle selection guide for further information.

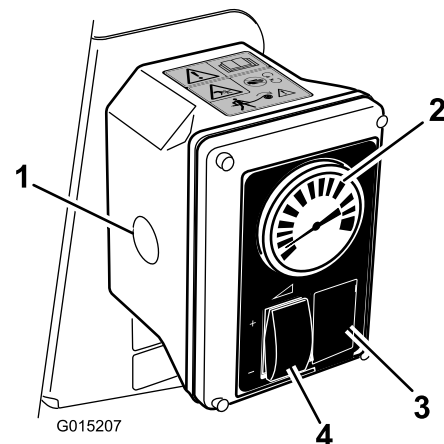


Figure 13

- | | |
|-------------------|------------------------|
| 1. Plug | 3. Plug |
| 2. Pressure gauge | 4. Rate control switch |

6. Adjust the rate control switch and the throttle to increase or decrease the pressure, as read on the pressure gauge, to the desired setting (Figure 13).

Note: Use the lowest throttle setting possible to achieve the desired pressure. This can be achieved by setting the pressure to maximum with the rate control switch and then adjusting the throttle speed until the desired pressure is obtained.

Note: The maximum recommended operating pressure of the hand spray gun kit is 150 psi.

Spraying with the Hand Sprayer

1. Remove the desired amount of hose from hose hooks.

Important: Do not pull the hose with the spray gun. Always hold the hose and pull on it directly. Pulling on the hose with the gun may break the fitting on the gun or damage the hose.

2. Release the trigger lock.
3. Direct the spray gun nozzle at the area to be sprayed and pull the trigger.
4. Release the trigger and set the trigger lock when finished.

Switching from Hand Spray Mode to Boom Spray Mode

1. Press the rate control switch to reduce the pressure.
2. Set the spray selection switch to the off position.
3. Direct the spray gun nozzle at an area where it is safe to spray, release the trigger lock, and pull the trigger until all remaining fluid is out of the hose, then set the trigger lock.
4. Wrap the hose around the hooks of the tank and secure the gun as shown in [Figure 14](#).

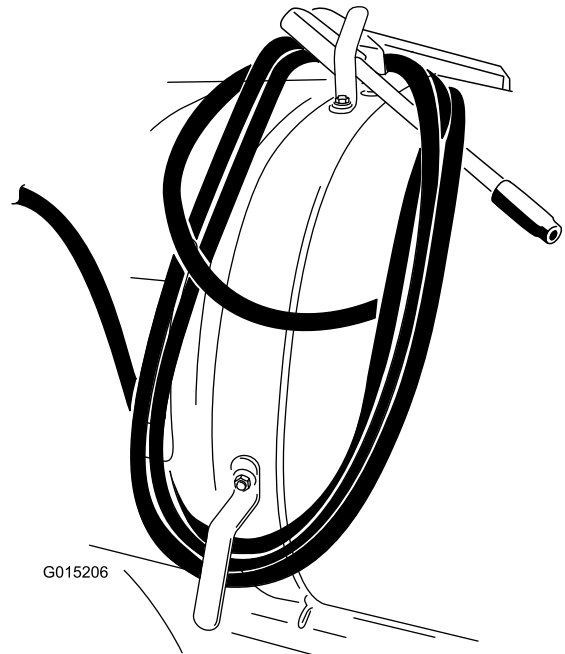


Figure 14

Declaration of Incorporation

The Toro Company, 8111 Lyndale Ave. South, Bloomington, MN, USA declares that the following unit(s) conform(s) to the directives listed, when installed in accordance with the accompanying instructions onto certain Toro models as indicated on the relevant Declarations of Conformity.

Model No.	Serial No.	Product Description	Invoice Description	General Description	Directive
41605	315000001 and Up	Hand Spray Gun Kit, Multi-Pro 5800 Turf Sprayer	HAND SPRAY GUN KIT	Turf Sprayer	2006/42/EC, 2000/14/EC

Relevant technical documentation has been compiled as required per Part B of Annex VII of 2006/42/EC.

We will undertake to transmit, in response to requests by national authorities, relevant information on this partly completed machinery. The method of transmission shall be electronic transmittal.

This machinery shall not be put into service until incorporated into approved Toro models as indicated on the associated Declaration of Conformity and in accordance with all instructions, whereby it can be declared in conformity with all relevant Directives.

Certified:



David Klis
Sr. Engineering Manager
8111 Lyndale Ave. South
Bloomington, MN 55420, USA
January 27, 2015

EU Technical Contact:

Peter Tetteroo
Toro Europe NV
B-2260 Oevel-Westerloo
Belgium

Tel. 0032 14 562960
Fax 0032 14 581911

International Distributor List

Distributor:	Country:	Phone Number:	Distributor:	Country:	Phone Number:
Agrolanc Kft	Hungary	36 27 539 640	Maquiver S.A.	Colombia	57 1 236 4079
Balama Prima Engineering Equip.	Hong Kong	852 2155 2163	Maruyama Mfg. Co. Inc.	Japan	81 3 3252 2285
B-Ray Corporation	Korea	82 32 551 2076	Mountfield a.s.	Czech Republic	420 255 704 220
Casco Sales Company	Puerto Rico	787 788 8383	Mountfield a.s.	Slovakia	420 255 704 220
Ceres S.A.	Costa Rica	506 239 1138	Munditol S.A.	Argentina	54 11 4 821 9999
CSSC Turf Equipment (pvt) Ltd.	Sri Lanka	94 11 2746100	Norma Garden	Russia	7 495 411 61 20
Cyril Johnston & Co.	Northern Ireland	44 2890 813 121	Oslinger Turf Equipment SA	Ecuador	593 4 239 6970
Cyril Johnston & Co.	Republic of Ireland	44 2890 813 121	Oy Hako Ground and Garden Ab	Finland	358 987 00733
Equiver	Mexico	52 55 539 95444	Parkland Products Ltd.	New Zealand	64 3 34 93760
Femco S.A.	Guatemala	502 442 3277	Perfetto	Poland	48 61 8 208 416
ForGarder OU	Estonia	372 384 6060	Pratoverde SRL.	Italy	39 049 9128 128
G.Y.K. Company Ltd.	Japan	81 726 325 861	Prochaska & Cie	Austria	43 1 278 5100
Geomechaniki of Athens	Greece	30 10 935 0054	RT Cohen 2004 Ltd.	Israel	972 986 17979
Golf international Turizm	Turkey	90 216 336 5993	Riversa	Spain	34 9 52 83 7500
Guandong Golden Star	China	86 20 876 51338	Lely Turfcare	Denmark	45 66 109 200
Hako Ground and Garden	Sweden	46 35 10 0000	Solvart S.A.S.	France	33 1 30 81 77 00
Hako Ground and Garden	Norway	47 22 90 7760	Spypros Stavrinides Limited	Cyprus	357 22 434131
Hayter Limited (U.K.)	United Kingdom	44 1279 723 444	Surge Systems India Limited	India	91 1 292299901
Hydroturf Int. Co Dubai	United Arab Emirates	97 14 347 9479	T-Markt Logistics Ltd.	Hungary	36 26 525 500
Hydroturf Egypt LLC	Egypt	202 519 4308	Toro Australia	Australia	61 3 9580 7355
Irrimac	Portugal	351 21 238 8260	Toro Europe NV	Belgium	32 14 562 960
Irrigation Products Int'l Pvt Ltd.	India	0091 44 2449 4387	Valtech	Morocco	212 5 3766 3636
Jean Heybroek b.v.	Netherlands	31 30 639 4611	Victus Emak	Poland	48 61 823 8369

European Privacy Notice

The Information Toro Collects

Toro Warranty Company (Toro) respects your privacy. In order to process your warranty claim and contact you in the event of a product recall, we ask you to share certain personal information with us, either directly or through your local Toro company or dealer.

The Toro warranty system is hosted on servers located within the United States where privacy law may not provide the same protection as applies in your country.

BY SHARING YOUR PERSONAL INFORMATION WITH US, YOU ARE CONSENTING TO THE PROCESSING OF YOUR PERSONAL INFORMATION AS DESCRIBED IN THIS PRIVACY NOTICE.

The Way Toro Uses Information

Toro may use your personal information to process warranty claims, to contact you in the event of a product recall and for any other purpose which we tell you about. Toro may share your information with Toro's affiliates, dealers or other business partners in connection with any of these activities. We will not sell your personal information to any other company. We reserve the right to disclose personal information in order to comply with applicable laws and with requests by the appropriate authorities, to operate our systems properly or for our own protection or that of other users.

Retention of your Personal Information

We will keep your personal information as long as we need it for the purposes for which it was originally collected or for other legitimate purposes (such as regulatory compliance), or as required by applicable law.

Toro's Commitment to Security of Your Personal Information

We take reasonable precautions in order to protect the security of your personal information. We also take steps to maintain the accuracy and current status of personal information.

Access and Correction of your Personal Information

If you would like to review or correct your personal information, please contact us by email at legal@toro.com.

Australian Consumer Law

Australian customers will find details relating to the Australian Consumer Law either inside the box or at your local Toro Dealer.



Toro General Commercial Product Warranty

A Two-Year Limited Warranty

Conditions and Products Covered

The Toro Company and its affiliate, Toro Warranty Company, pursuant to an agreement between them, jointly warrant your Toro Commercial product ("Product") to be free from defects in materials or workmanship for two years or 1500 operational hours*, whichever occurs first. This warranty is applicable to all products with the exception of Aerators (refer to separate warranty statements for these products). Where a warrantable condition exists, we will repair the Product at no cost to you including diagnostics, labor, parts, and transportation. This warranty begins on the date the Product is delivered to the original retail purchaser.

* Product equipped with an hour meter.

Instructions for Obtaining Warranty Service

You are responsible for notifying the Commercial Products Distributor or Authorized Commercial Products Dealer from whom you purchased the Product as soon as you believe a warrantable condition exists. If you need help locating a Commercial Products Distributor or Authorized Dealer, or if you have questions regarding your warranty rights or responsibilities, you may contact us at:

Toro Commercial Products Service Department
Toro Warranty Company
8111 Lyndale Avenue South
Bloomington, MN 55420-1196

952-888-8801 or 800-952-2740
E-mail: commercial.warranty@toro.com

Owner Responsibilities

As the Product owner, you are responsible for required maintenance and adjustments stated in your *Operator's Manual*. Failure to perform required maintenance and adjustments can be grounds for disallowing a warranty claim.

Items and Conditions Not Covered

Not all product failures or malfunctions that occur during the warranty period are defects in materials or workmanship. This warranty does not cover the following:

- Product failures which result from the use of non-Toro replacement parts, or from installation and use of add-on, or modified non-Toro branded accessories and products. A separate warranty may be provided by the manufacturer of these items.
- Product failures which result from failure to perform recommended maintenance and/or adjustments. Failure to properly maintain your Toro product per the Recommended Maintenance listed in the *Operator's Manual* can result in claims for warranty being denied.
- Product failures which result from operating the Product in an abusive, negligent, or reckless manner.
- Parts subject to consumption through use unless found to be defective. Examples of parts which are consumed, or used up, during normal Product operation include, but are not limited to, brake pads and linings, clutch linings, blades, reels, rollers and bearings (sealed or greasable), bed knives, spark plugs, castor wheels and bearings, tires, filters, belts, and certain sprayer components such as diaphragms, nozzles, and check valves, etc.
- Failures caused by outside influence. Conditions considered to be outside influence include, but are not limited to, weather, storage practices, contamination, use of unapproved fuels, coolants, lubricants, additives, fertilizers, water, or chemicals, etc.
- Failure or performance issues due to the use of fuels (e.g. gasoline, diesel, or biodiesel) that do not conform to their respective industry standards.

- Normal noise, vibration, wear and tear, and deterioration.
- Normal "wear and tear" includes, but is not limited to, damage to seats due to wear or abrasion, worn painted surfaces, scratched decals or windows, etc.

Parts

Parts scheduled for replacement as required maintenance are warranted for the period of time up to the scheduled replacement time for that part. Parts replaced under this warranty are covered for the duration of the original product warranty and become the property of Toro. Toro will make the final decision whether to repair any existing part or assembly or replace it. Toro may use remanufactured parts for warranty repairs.

Deep Cycle and Lithium-Ion Battery Warranty:

Deep cycle and Lithium-Ion batteries have a specified total number of kilowatt-hours they can deliver during their lifetime. Operating, recharging, and maintenance techniques can extend or reduce total battery life. As the batteries in this product are consumed, the amount of useful work between charging intervals will slowly decrease until the battery is completely worn out. Replacement of worn out batteries, due to normal consumption, is the responsibility of the product owner. Battery replacement may be required during the normal product warranty period at owner's expense. Note: (Lithium-Ion battery only): A Lithium-Ion battery has a part only prorated warranty beginning year 3 through year 5 based on the time in service and kilowatt hours used. Refer to the *Operator's Manual* for additional information.

Maintenance is at Owner's Expense

Engine tune-up, lubrication, cleaning and polishing, replacement of filters, coolant, and completing recommended maintenance are some of the normal services Toro products require that are at the owner's expense.

General Conditions

Repair by an Authorized Toro Distributor or Dealer is your sole remedy under this warranty.

Neither The Toro Company nor Toro Warranty Company is liable for indirect, incidental or consequential damages in connection with the use of the Toro Products covered by this warranty, including any cost or expense of providing substitute equipment or service during reasonable periods of malfunction or non-use pending completion of repairs under this warranty. Except for the Emissions warranty referenced below, if applicable, there is no other express warranty. All implied warranties of merchantability and fitness for use are limited to the duration of this express warranty.

Some states do not allow exclusions of incidental or consequential damages, or limitations on how long an implied warranty lasts, so the above exclusions and limitations may not apply to you. This warranty gives you specific legal rights, and you may also have other rights which vary from state to state.

Note regarding engine warranty:

The Emissions Control System on your Product may be covered by a separate warranty meeting requirements established by the U.S. Environmental Protection Agency (EPA) and/or the California Air Resources Board (CARB). The hour limitations set forth above do not apply to the Emissions Control System Warranty. Refer to the Engine Emission Control Warranty Statement supplied with your product or contained in the engine manufacturer's documentation for details.

Countries Other than the United States or Canada

Customers who have purchased Toro products exported from the United States or Canada should contact their Toro Distributor (Dealer) to obtain guarantee policies for your country, province, or state. If for any reason you are dissatisfied with your Distributor's service or have difficulty obtaining guarantee information, contact the Toro importer.