



# Full Area Flatbed

## Heavy-Duty Workman® Utility Vehicle

Model No. 07301—Serial No. 315000001 and Up

### Installation Instructions

#### ⚠ WARNING

##### CALIFORNIA Proposition 65 Warning

This product contains a chemical or chemicals known to the State of California to cause cancer, birth defects, or reproductive harm.

## Installation

### Loose Parts

Use the chart below to verify that all parts have been shipped.

Procedure	Description	Qty.	Use
<b>1</b>	Wear block Left spacer bracket Right spacer bracket Pivot tube Bolt (3/8 x 3-3/4 inches) Locknut (3/8 inch) Left pivot bracket Right pivot bracket Carriage bolt (3/8 x 3-3/4 inches) Pan head bolt Locknut	2 1 1 2 8 14 2 2 6 4 4	Install the rear pivot brackets and box spacers.
<b>2</b>	Flatbed Clevis pin Lynch pin	1 4 8	Install the flatbed.
<b>3</b>	No parts required	—	Use the bed safety support.
<b>4</b>	No parts required	—	Remove the flatbed.



# 1

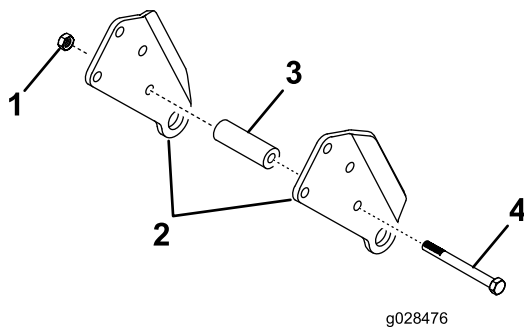
## Installing the Rear Pivot Brackets and Box Spacers

### Parts needed for this procedure:

2	Wear block
1	Left spacer bracket
1	Right spacer bracket
2	Pivot tube
8	Bolt (3/8 x 3-3/4 inches)
14	Locknut (3/8 inch)
2	Left pivot bracket
2	Right pivot bracket
6	Carriage bolt (3/8 x 3-3/4 inches)
4	Pan head bolt
4	Locknut

### Procedure

- Loosely assemble each set of rear pivot brackets together with a pivot tube, a bolt (3/8 x 3-3/4 inches), and a locknut (3/8 inch) using the holes shown in [Figure 1](#).

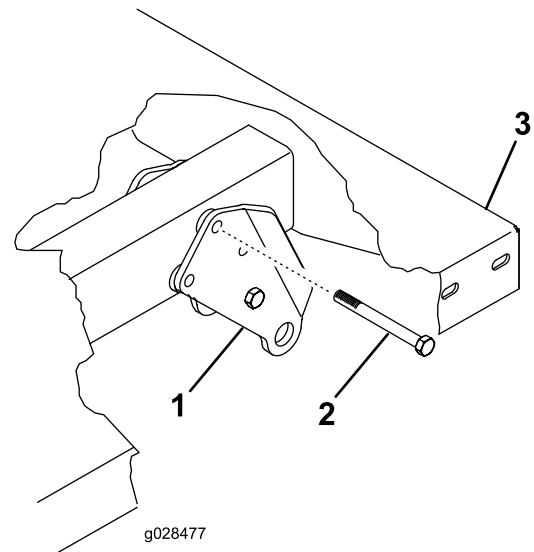


**Figure 1**

- Locknut
- Pivot brackets
- Pivot tube
- Bolt (3/8 x 3-3/4 inch)

- Loosely mount each set of rear pivot brackets to the right and left bed frame channels with 3 bolts (3/8 x 3-3/4 inches) and 3 locknuts (3/8 inch).

**Note:** Position the brackets on the flatbed as shown in [Figure 2](#).

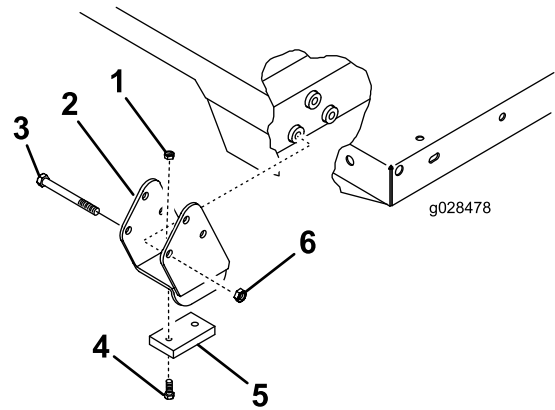


**Figure 2**

Locknuts are not shown

- Pivot bracket
- Bolt—3/8 x 3-3/4 inch (3)
- Left rear corner of the bed

- Mount a wear block to the left and right spacer brackets with 2 pan-head bolts and 2 locknuts ([Figure 3](#)).



**Figure 3**

- Locknut
- Spacer bracket
- Carriage bolt
- Pan head bolt
- Wear block
- Locknut (3/8 inch)

- Mount the spacer brackets to the front of the right and left bed frame channels with 3 carriage bolts (3/8 x 3-3/4 inches) and 3 locknuts (3/8 inch) as shown in [Figure 3](#).
- Position the brackets on the channel as shown in [Figure 3](#).

# 2

## Installing the Flatbed

### Parts needed for this procedure:

1	Flatbed
4	Clevis pin
8	Lynch pin

### Procedure

#### ⚠ CAUTION

The flatbed is heavy—approximately 94 kg (210 lb), which can injure you if you attempt to install or remove the full bed on your own.

Have 2 or 3 other people help you to install or remove the full bed.

#### ⚠ WARNING

Working under a raised bed without the proper safety support may cause the bed to fall on you, causing serious personal injury or death.

- Install a safety support from the outside of the vehicle; never from under the bed.
- Have someone assist you whenever you lift the bed or use a hoist.
- Do not work under a raised bed without the proper safety support in place.

**Note:** If you are installing bed sides on the flatbed, it is easier to install them before you install the bed on the vehicle.

**Note:** On a Workman 3000 or 4000 with a full flatbed, ensure that the rear pivot brackets are bolted to the bed frame or channel so that the lower end angles to the rear (Figure 2).

**Note:** Ensure that the spacer brackets are installed to prevent damaging the radiator cover.

1. Fully retract the lift cylinders.
2. Carefully set the bed onto the vehicle frame and align the rear bed pivot bracket holes with the holes in the rear frame channel (Figure 4).

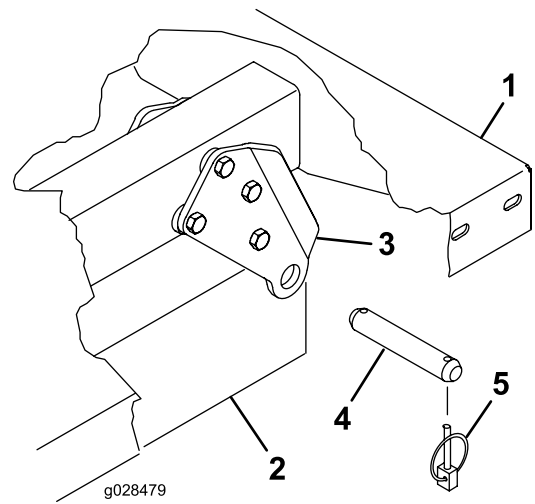


Figure 4

1. Left rear corner of the bed
2. Vehicle frame channel
3. Pivot bracket
4. Clevis pin
5. Lynch pin

3. Secure each set of pivot brackets to the frame channels with a clevis pin and 2 lynch pins (Figure 4).
4. Tighten the pivot bracket mounting bolts.
5. Lower the bed.
6. Secure each cylinder rod end to the appropriate slots in the bed mounting plates with a clevis pin and a lynch pin.
7. Insert the clevis pin from the outside of the bed with the lynch pin toward the outside (Figure 5).

**Note:** You may need to start the engine to extend or retract the cylinders to align the holes. Keep your fingers away!

**Note:** You can plug an unused slot with a bolt and a nut to prevent an assembly error.

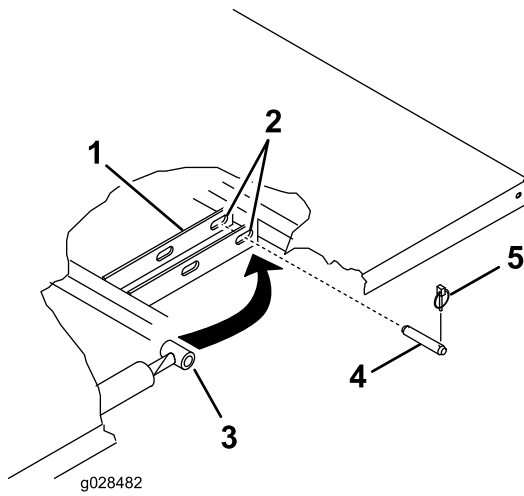
# 3

## Using the Bed Safety Support

### No Parts Required

#### Procedure

1. Raise the bed until the cylinders are fully extended.
2. Remove the bed support from the storage stud on the top of the backrest support channel on the vehicle (Figure 6).



**Figure 5**

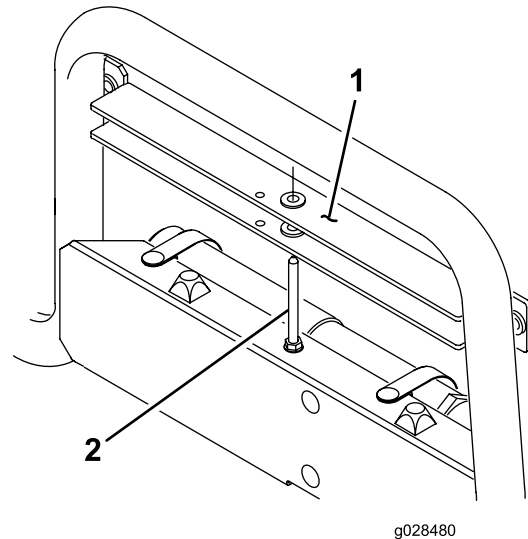
- |                       |               |
|-----------------------|---------------|
| 1. Bed mounting plate | 4. Clevis pin |
| 2. Rear slots         | 5. Lynch pin  |
| 3. Cylinder rod end   |               |

8. Start the engine and engage the hydraulic lift lever to raise the bed.
9. Release the lift lever and stop the engine.
10. Secure the raised bed with a hoist or set a block under the bed to prevent it from falling.
11. Install the lynch pins to the inside ends of the clevis pins.

**Note:** If the automatic tailgate release is installed on the bed, ensure that the front dump link rod is on the inside of the left clevis pin before you install the lynch pin.

**Note:** Once you have installed the cylinder, you can now use the safety support to prevent the bed from lowering accidentally; refer to [3 Using the Bed Safety Support \(page 4\)](#).

12. Remove the bed safety support from the cylinder and place it on the storage stud.
13. Start the engine and engage the hydraulic lift lever to lower the bed.
14. Release the lift lever and stop the engine.



**Figure 6**

- |                |                 |
|----------------|-----------------|
| 1. Bed support | 2. Storage stud |
|----------------|-----------------|

3. Push the bed support onto the cylinder rod and ensure that the support end tabs rest on the end of the cylinder barrel and on the cylinder rod end (Figure 7).

# 4

## Removing the Flatbed

### No Parts Required

### Procedure

#### ⚠ CAUTION

The flatbed is heavy—approximately 94 kg (210 lb), which can injure you if you attempt to install or remove the full bed on your own.

Have 2 or 3 other people help you to install or remove the full bed.

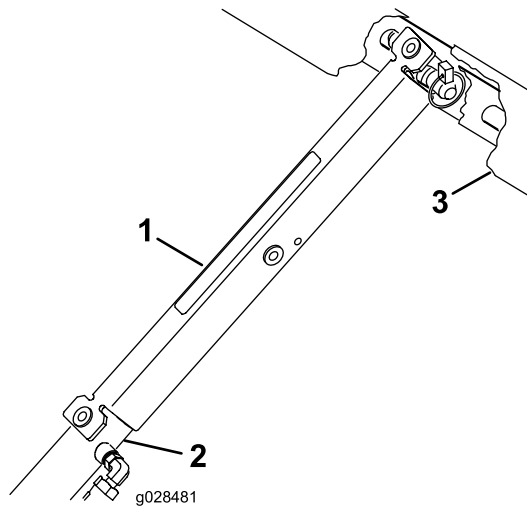


Figure 7

1. Bed support
2. Cylinder barrel
3. Bed

4. Store the bed support by removing the bed support from the cylinder and inserting it on the stud on top of the backrest support channel.

**Note:** Always install or remove the bed support from the outside of the bed.

**Note:** Do not attempt to lower the bed with the bed safety support on the cylinder.

1. Start the engine, engage the hydraulic lift lever, and lower the bed until the cylinders are loose in the slots.
2. Release the lift lever and stop the engine.
3. Remove the lynch pins from the outer ends of the cylinder rod clevis pins.
4. Remove the clevis pins that secure the cylinder rod ends to the bed-mounting plates by pushing the pins toward the inside.
5. Remove the lynch pins and the clevis pins that secure the pivot brackets to the frame channels.
6. Lift the bed off the vehicle.
7. Store the cylinders in the storage clips.
8. Engage the hydraulic lift lock lever on the vehicle to prevent extending the lift cylinders.

**Notes:**

# Declaration of Incorporation

The Toro Company, 8111 Lyndale Ave. South, Bloomington, MN, USA declares that the following unit(s) conform(s) to the directives listed, when installed in accordance with the accompanying instructions onto certain Toro models as indicated on the relevant Declarations of Conformity.

Model No.	Serial No.	Product Description	Invoice Description	General Description	Directive
07301	315000001 and Up	Workman HDX—Auto Utility Vehicle	WORKMAN HDX AUTOMATIC—INTL	Utility Vehicle Full Flatbed	2006/42/EC

Relevant technical documentation has been compiled as required per Part B of Annex VII of 2006/42/EC.

We will undertake to transmit, in response to requests by national authorities, relevant information on this partly completed machinery. The method of transmission shall be electronic transmittal.

This machinery shall not be put into service until incorporated into approved Toro models as indicated on the associated Declaration of Conformity and in accordance with all instructions, whereby it can be declared in conformity with all relevant Directives.

Certified:



David Klis  
Sr. Engineering Manager  
8111 Lyndale Ave. South  
Bloomington, MN 55420, USA  
September 26, 2013

EU Technical Contact:

Peter Tetteroo  
Toro Europe NV  
B-2260 Oevel-Westerloo  
Belgium

Tel. 0032 14 562960  
Fax 0032 14 581911



# Toro General Commercial Product Warranty

## A Two-Year Limited Warranty

### Conditions and Products Covered

The Toro Company and its affiliate, Toro Warranty Company, pursuant to an agreement between them, jointly warrant your Toro Commercial product ("Product") to be free from defects in materials or workmanship for two years or 1500 operational hours\*, whichever occurs first. This warranty is applicable to all products with the exception of Aerators (refer to separate warranty statements for these products). Where a warrantable condition exists, we will repair the Product at no cost to you including diagnostics, labor, parts, and transportation. This warranty begins on the date the Product is delivered to the original retail purchaser.

\* Product equipped with an hour meter.

### Instructions for Obtaining Warranty Service

You are responsible for notifying the Commercial Products Distributor or Authorized Commercial Products Dealer from whom you purchased the Product as soon as you believe a warrantable condition exists. If you need help locating a Commercial Products Distributor or Authorized Dealer, or if you have questions regarding your warranty rights or responsibilities, you may contact us at:

Toro Commercial Products Service Department  
Toro Warranty Company  
8111 Lyndale Avenue South  
Bloomington, MN 55420-1196  
  
952-888-8801 or 800-952-2740  
E-mail: commercial.warranty@toro.com

### Owner Responsibilities

As the Product owner, you are responsible for required maintenance and adjustments stated in your *Operator's Manual*. Failure to perform required maintenance and adjustments can be grounds for disallowing a warranty claim.

### Items and Conditions Not Covered

Not all product failures or malfunctions that occur during the warranty period are defects in materials or workmanship. This warranty does not cover the following:

- Product failures which result from the use of non-Toro replacement parts, or from installation and use of add-on, or modified non-Toro branded accessories and products. A separate warranty may be provided by the manufacturer of these items.
- Product failures which result from failure to perform recommended maintenance and/or adjustments. Failure to properly maintain your Toro product per the Recommended Maintenance listed in the *Operator's Manual* can result in claims for warranty being denied.
- Product failures which result from operating the Product in an abusive, negligent, or reckless manner.
- Parts subject to consumption through use unless found to be defective. Examples of parts which are consumed, or used up, during normal Product operation include, but are not limited to, brake pads and linings, clutch linings, blades, reels, rollers and bearings (sealed or greasable), bed knives, spark plugs, castor wheels and bearings, tires, filters, belts, and certain sprayer components such as diaphragms, nozzles, and check valves, etc.
- Failures caused by outside influence. Conditions considered to be outside influence include, but are not limited to, weather, storage practices, contamination, use of unapproved fuels, coolants, lubricants, additives, fertilizers, water, or chemicals, etc.
- Failure or performance issues due to the use of fuels (e.g. gasoline, diesel, or biodiesel) that do not conform to their respective industry standards.

- Normal noise, vibration, wear and tear, and deterioration.
- Normal "wear and tear" includes, but is not limited to, damage to seats due to wear or abrasion, worn painted surfaces, scratched decals or windows, etc.

### Parts

Parts scheduled for replacement as required maintenance are warranted for the period of time up to the scheduled replacement time for that part. Parts replaced under this warranty are covered for the duration of the original product warranty and become the property of Toro. Toro will make the final decision whether to repair any existing part or assembly or replace it. Toro may use remanufactured parts for warranty repairs.

### Deep Cycle and Lithium-Ion Battery Warranty:

Deep cycle and Lithium-Ion batteries have a specified total number of kilowatt-hours they can deliver during their lifetime. Operating, recharging, and maintenance techniques can extend or reduce total battery life. As the batteries in this product are consumed, the amount of useful work between charging intervals will slowly decrease until the battery is completely worn out. Replacement of worn out batteries, due to normal consumption, is the responsibility of the product owner. Battery replacement may be required during the normal product warranty period at owner's expense. Note: (Lithium-Ion battery only): A Lithium-Ion battery has a part only prorated warranty beginning year 3 through year 5 based on the time in service and kilowatt hours used. Refer to the *Operator's Manual* for additional information.

### Maintenance is at Owner's Expense

Engine tune-up, lubrication, cleaning and polishing, replacement of filters, coolant, and completing recommended maintenance are some of the normal services Toro products require that are at the owner's expense.

### General Conditions

Repair by an Authorized Toro Distributor or Dealer is your sole remedy under this warranty.

**Neither The Toro Company nor Toro Warranty Company is liable for indirect, incidental or consequential damages in connection with the use of the Toro Products covered by this warranty, including any cost or expense of providing substitute equipment or service during reasonable periods of malfunction or non-use pending completion of repairs under this warranty. Except for the Emissions warranty referenced below, if applicable, there is no other express warranty. All implied warranties of merchantability and fitness for use are limited to the duration of this express warranty.**

Some states do not allow exclusions of incidental or consequential damages, or limitations on how long an implied warranty lasts, so the above exclusions and limitations may not apply to you. This warranty gives you specific legal rights, and you may also have other rights which vary from state to state.

### Note regarding engine warranty:

The Emissions Control System on your Product may be covered by a separate warranty meeting requirements established by the U.S. Environmental Protection Agency (EPA) and/or the California Air Resources Board (CARB). The hour limitations set forth above do not apply to the Emissions Control System Warranty. Refer to the Engine Emission Control Warranty Statement supplied with your product or contained in the engine manufacturer's documentation for details.

### Countries Other than the United States or Canada

Customers who have purchased Toro products exported from the United States or Canada should contact their Toro Distributor (Dealer) to obtain guarantee policies for your country, province, or state. If for any reason you are dissatisfied with your Distributor's service or have difficulty obtaining guarantee information, contact the Toro importer.