



Damper Kit

GreensPro™ 1200 Greens Roller

Model No. 131-6403

Form No. 3393-780 Rev A

Installation Instructions

⚠ WARNING

CALIFORNIA Proposition 65 Warning

This product contains a chemical or chemicals known to the State of California to cause cancer, birth defects, or reproductive harm.

Installing the Kit

1. Connect the machine to a tow vehicle.
2. Park the machine on a level surface, set the parking brake on the tow vehicle, and turn off the engine of the machine.
3. Remove the mounting bolt and lift off the rear cover (Figure 1).

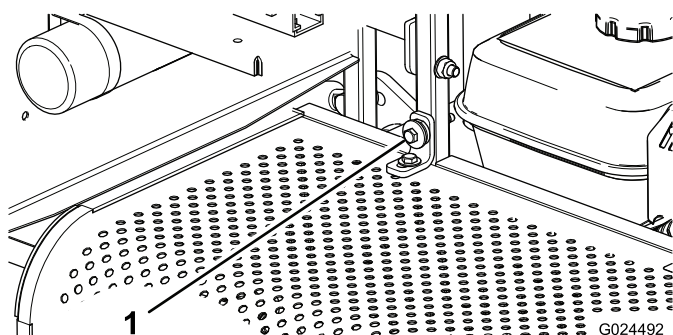


Figure 1

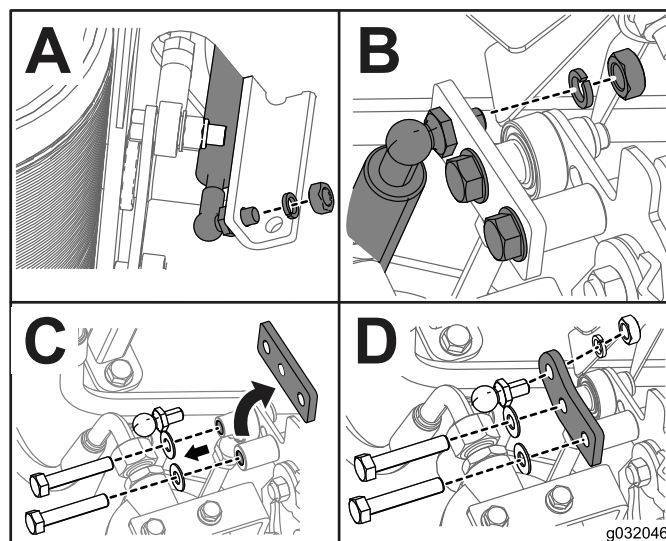


Figure 2

4. Raise the machine up off the ground to access the damper assembly. Refer to the machine's *Operators Manual*.
5. Disconnect the current damper under the machine (Box A of Figure 2).
6. Disconnect and remove the current damper from the machine (Box B of Figure 2).
7. Remove the bolts and washers from the damper plate as shown in Box B and C of Figure 2).
8. Discard the damper plate (Box C of Figure 2).
9. Install the new damper and damper plate using the hardware previously removed (Box D of Figure 2).
10. Connect the damper to the lower bracket using the hardware previously removed (Box A of Figure 2).
11. Install the rear cover.





Count on it.