



# 24 in Cordless Hedge Trimmer

Model No. 51496A—Serial No. 315000001 and Up

Model No. 51496AT—Serial No. 315000001 and Up

## Operator's Manual

Model 51496AT does not include a battery or a charger.



If you have questions or problems, call toll free 1-888-367-6631 (US), 1-888-430-1687 (Canada), or 1-800-450-9350 (Mexico) before returning this product.

## General Power Tool Safety Warnings

### ⚠ WARNING

#### CALIFORNIA

#### Proposition 65 Warning

This product contains a chemical or chemicals known to the State of California to cause cancer, birth defects, or reproductive harm.



**WARNING** Read all safety warnings and all instructions. Failure to follow the warnings and instructions may result in electric shock, fire, and/or serious injury.

Save all warnings and instructions for future reference.

The term "power tool" in all of the warnings listed below refers to your mains-operated (corded) power tool or battery-operated (cordless) power tool.

#### 1. Work area safety

- Keep work area clean and well lit.** Cluttered or dark areas invite accidents.
- Do not operate power tools in explosive atmospheres, such as in the presence of flammable liquids, gases or dust.** Power tools create sparks which may ignite the dust or fumes.
- Keep children and bystanders away while operating a power tool.** Distractions can cause you to lose control.

#### 2. Electrical safety

- Power tool plugs must match the outlet. Never modify the plug in any way. Do not use any adapter plugs with earthed (grounded) power tools.** Unmodified plugs and matching outlets will reduce risk of electric shock.
- Avoid body contact with earthed or grounded surfaces such as pipes, radiators, ranges and**

**refrigerators.** There is an increased risk of electric shock if your body is earthed or grounded.

- Do not expose power tools to rain or wet conditions.** Water entering a power tool will increase the risk of electric shock.
- Do not abuse the cord. Never use the cord for carrying, pulling or unplugging the power tool. Keep cord away from heat, oil, sharp edges or moving parts.** Damaged or entangled cords increase the risk of electric shock.
- When operating a power tool outdoors, use an extension cord suitable for outdoor use.** Use of a cord suitable for outdoor use reduces the risk of electric shock.
- If operating a power tool in a damp location is unavoidable, use a supply protected by a residual current device (RCD) in AUS or a ground fault interrupt (GFI) in the USA.** Use of an RCD or GFI reduces the risk of electric shock.

#### 3. Personal safety

- Stay alert, watch what you are doing and use common sense when operating a power tool. Do not use a power tool while you are tired or under the influence of drugs, alcohol or medication.** A moment of inattention while operating power tools may result in serious personal injury.
- Use personal protective equipment. Always wear eye protection.** Protective equipment such as dust mask, non-skid safety shoes, hard hat, or hearing protection used for appropriate conditions will reduce personal injuries.
- Prevent unintentional starting. Ensure the switch is in the off-position before connecting to power source and/or battery pack, picking up or carrying the tool. Carrying power tools with your finger on the switch or energising power tools that have the switch on invites accidents.**
- Remove any adjusting key or wrench before turning the power tool on. A wrench or a key left attached to a rotating part of the power tool may result in personal injury.**
- Do not overreach. Keep proper footing and balance at all times.** This enables better control of the power tool in unexpected situations.



- F. **Dress properly. Do not wear loose clothing or jewelry. Keep your hair, clothing and gloves away from moving parts.** *Loose clothes, jewelry, or long hair can be caught in moving parts.*
  - G. **If devices are provided for the connection of dust extraction and collection facilities, ensure these are connected and properly used.** *Use of these devices can reduce dust-related hazards.*
4. **Power tool use and care**
- A. **Do not force the power tool. Use the correct power tool for your application.** *The correct power tool will do the job better and safer at the rate for which it was designed.*
  - B. **Do not use the power tool if the switch does not turn it on and off.** *Any power tool that cannot be controlled with the switch is dangerous and must be repaired.*
  - C. **Disconnect the plug from the power source and/or the battery pack from the power tool before making any adjustments, changing accessories, or storing power tools.** *Such preventive safety measures reduce the risk of starting the power tool accidentally.*
  - D. **Store idle power tools out of the reach of children and do not allow persons unfamiliar with the power tool or these instructions to operate the power tool.** *Power tools are dangerous in the hands of untrained users.*
  - E. **Maintain power tools. Check for misalignment or binding of moving parts, breakage of parts and any other condition that may affect the power tools operation. If damaged, have the power tool repaired before use.** *Many accidents are caused by poorly maintained power tools.*
  - F. **Keep cutting tools sharp and clean.** *Properly maintained cutting tools with sharp cutting edges are less likely to bind and are easier to control.*
  - G. **Use the power tool, accessories and tool bits etc. in accordance with these instructions, taking into account the working conditions and the work to be performed..** *Use of the power tool for operations different from those intended could result in a hazardous situation.*
5. **Battery tool use and care**
- A. **Recharge only with the charger specified by the manufacturer.** *A charger that is suitable for one type of battery pack may create a risk of fire when used with another battery pack.*
  - B. **Use power tools only with specifically designated battery packs.** *Use any other battery packs may create a risk of injury and fire.*
  - C. **When battery pack is not in use, keep it away from the other metal objects, like paper clips, coins, keys, nails, screws, or other small metal objects that can make a connection from one terminal to another.** *Shorting the battery terminals together may cause burns or a fire.*
  - D. **Under abusive conditions, liquid may be ejected from the battery; avoid contact. If contact accidentally occurs, flush with water. If liquid contacts eyes, additionally seek medical help.** *Liquid ejected from the battery may cause irritation or burns.*
  - E. **Charging time will be increased if the battery is charged when the temperature is not between 41 to 104 degrees F (5 to 40 degrees C).**

## 6. Service

**Have your power tool serviced by a qualified repair person using only identical replacement parts. This will ensure that the safety of the power tool is maintained.**

## Hedge Trimmer Safety Warnings

- **Use both hands when operating the hedge trimmer. Using one hand could cause loss of control and result in serious personal injury.**
- **Keep all parts of the body away from the cutter blade. Do not remove cut material or hold material to be cut when blades are moving. Make sure the switch is off when clearing jammed material. Blades coast after turn off. A moment of inattention while operating the hedge trimmer may result in serious personal injury.**
- **Carry the hedge trimmer by the handle with the cutter blade stopped.** *Proper handling of the hedge trimmer will reduce possible personal injury from the cutter blades.*
- **Hold the power tool by insulated gripping surfaces only, because the cutter blade may contact hidden wiring or its own cord. Cutter blades contacting a "live" wire may make exposed metal parts of the power tool "live" and could give the operator an electric shock.**
- **DANGER – Keep hands away from blade.** *Contact with blade will result in serious personal injury.*

The device should not be used by persons ( including children) with reduced physical, sensory or mental capabilities, or lack of experience and knowledge, unless they receive supervision or training.

Children should be supervised to not use the appliance as a toy.

If the power cord is damaged, it must be replaced by the manufacturer, its authorized service agent, or a similarly qualified person in order to avoid hazard.

# Safety and Instructional Decals



Safety decals and instructions are easily visible to the operator and are located near any area of potential danger. Replace any decal that is damaged or lost.



131-0362



131-0364



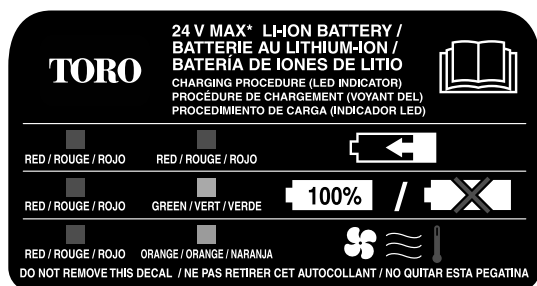
131-0363



131-0370



131-0372



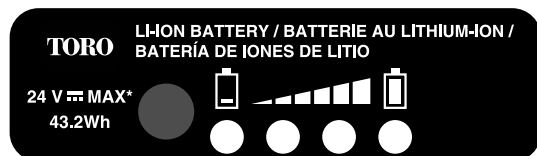
131-0369

#### CORDLESS HEDGE TRIMMER

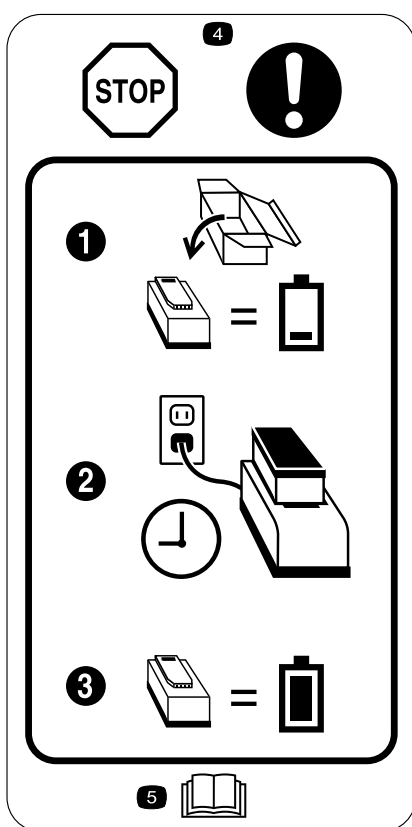
24 Vcc Máx.  
(Use Li-Ion battery: 24 Vcc Máx. 1.5 A)

Imported by: BRISAGOODS DE MONTERREY, S. A. DE C. V.  
Versalles No. 27, Colonia Juárez, Delegación Cuauhtemoc,  
México, D. F. C. P. 06600

131-0386



131-0371



125-8329

1. The battery does not come out of the box fully charged.
2. Place the battery in the battery charger.
3. Wait until the battery is fully charged before first use.
4. Stop—follow these instructions before first use.
5. Read the *Operator's Manual*.

Symbol	Name	Designation/Explanation
DC	Direct current	Type of current
A	Amperes	Current
Hz	Hertz	Frequency (cycles per second)
SPM	Strokes per minute	Speed of blade
V	Volts	Voltage

## Setup

Cut the zip-tie away from your body and remove it from the trigger handle (Figure 1).

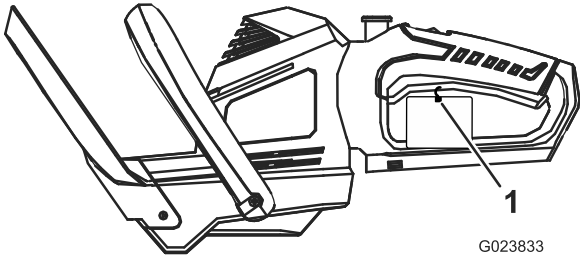


Figure 1

1. Zip-tie

## Operation

**Important:** The battery pack is not fully charged when it is purchased. Before using the hedge trimmer for the first time, refer to [Charging the Battery Pack \(page 6\)](#). Make sure to read all safety precautions. If storing for a prolonged period of time, remove the battery. When ready to use again, charge the battery pack; refer to [Charging the Battery Pack \(page 6\)](#).

## Starting the Hedge Trimmer

1. Remove the protective cover from the cutter blades (Figure 2).

### ⚠ WARNING

The hedge trimmer blades can cause cuts or amputation.

Be careful when handling the hedge trimmer with the protective cover removed.

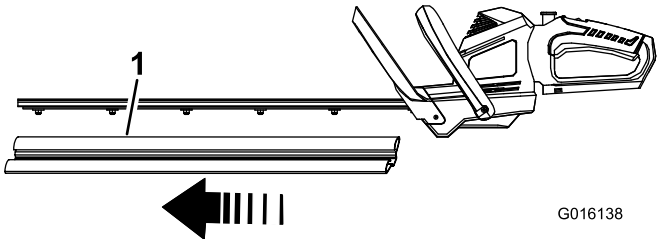


Figure 2

1. Protective cover
2. Align the tongue of the battery pack with the cavity in the handle housing (Figure 3).

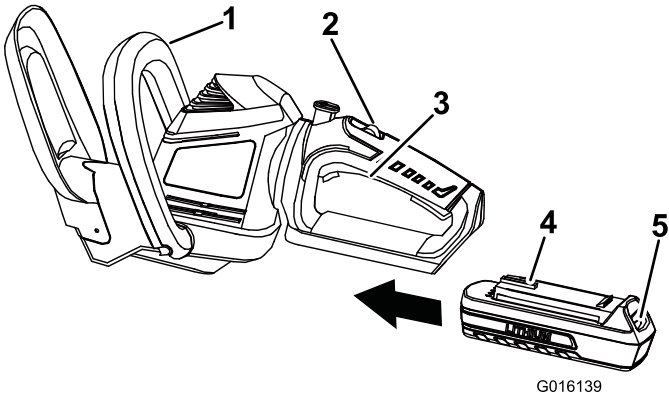
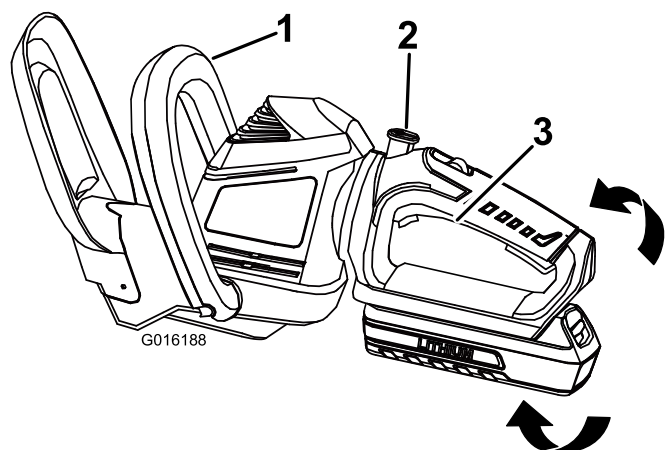


Figure 3

1. Auxiliary handle
2. Lock switch
3. Trigger
4. Tongue
5. Latch
3. Grasp the trigger handle (Figure 3).
4. Push the battery pack into the handle until the latch locks into place.
5. Place one hand on the trigger handle. Place the other hand on the auxiliary handle (Figure 3).
6. Slide the lock switch backwards, towards you, then squeeze the trigger switch to turn on the hedge trimmer (Figure 3). The trimmer will stay on as long as the trigger switch is squeezed. Lock-off switch may be released once hedge trimmer is running (Figure 3).

## Rotating the Hedge Trimmer Handle

1. Press and hold the rotational lock button.



**Figure 4**

1. Auxiliary handle
  2. Rotational lock button
  3. Handle
- 
2. Rotate the handle to the right or left depending on desired cutting direction, then release the rotational lock button to lock the handle in the desired position.

## Stopping the Hedge Trimmer

1. Release the trigger switch (Figure 3).
2. Allow at least 5 seconds for the cutting blade to stop moving.

## Charging the Battery Pack

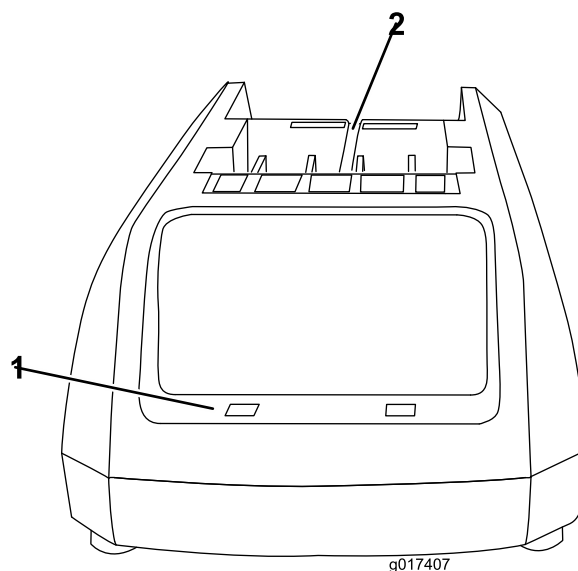
### **⚠ WARNING**

#### **CALIFORNIA** **Proposition 65 Warning**

**WARNING:** The power cord on this product contains lead, a chemical known to the State of California to cause birth defects or other reproductive harm. Wash hands after handling.

**Important:** For best results, your battery pack should be charged in a location where the temperature is more than 5° C (41° F) but less than 40° C (104° F). To reduce the risk of serious personal injury, do not store outside or in vehicles. Charging time will be increased if not charged within this range.

1. Turn the battery upside down and line up the battery terminal with the slot in the charger (Figure 5 and Figure 6).

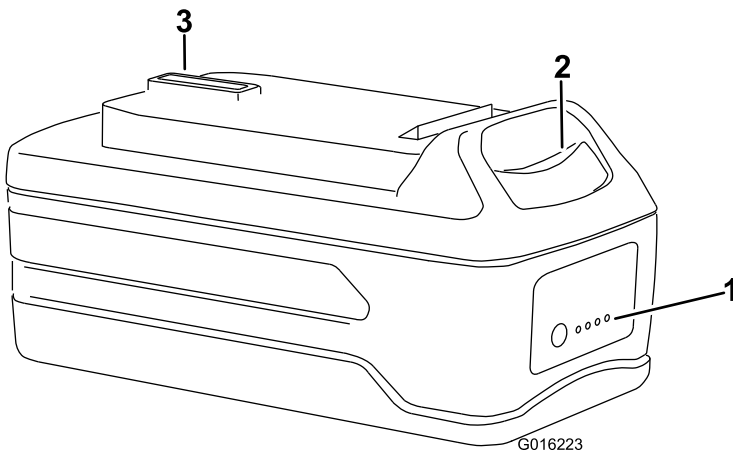


**Figure 5**

1. LED indicators
2. Insert battery here

## Operating Tips

- The unit is used for cutting in either direction in a slow, sweeping action from side to side.
- Stand so that you are stable and balanced on both feet. Do not overreach.
- Inspect and clear the area of any hidden objects.
- Never use the hedge trimmer near power lines, fencing, posts, buildings, or other immovable objects.
- Never use a blade after hitting a hard object without first inspecting it for damage. Do not use if any damage is detected.
- Never touch blades or service unit with the battery connected.
- Do not force the hedge trimmer through heavy shrubbery. This can cause the blades to bind and slow down. If the blades slow down, reduce the pace.
- Do not attempt to cut stems or twigs that are larger than .71 inches (18 mm), or those obviously too large to feed into the cutting blade. Use a hand saw or pruning saw to trim large stems.
- If blades do become jammed, stop the motor, allow the blades to stop, and remove the battery before attempting to remove the obstruction.
- If desired, you can use a string to help cut your hedge level. Decide how high you want the hedge. Stretch a piece of string along the hedge at the desired height. Trim the hedge just above the guide line of string.
- Trim the side of a hedge so that it will be slightly narrower at the top. More of the hedge will be exposed when shaped this way, and it will be more uniform.
- Wear gloves when trimming thorny or prickly growth. When trimming new growth, use a wide sweeping action, so that the stems are fed directly into the cutting blade.



**Figure 6**

1. LED indicators (level of charge)
2. Release button
3. Battery terminal

2. Slide the battery into the charger until it clicks into place.
3. To remove the battery, press down on the release button and slide the battery backwards out of the charger.
4. Refer to the table below to interpret the LED indicators on the battery charger.

LED COLOR		
Left	Right	Indicates:
Red	Red	Battery is charging
Red	Green	Fully charged
Red	Orange	Battery is too warm: Remove for approximately 30 minutes

# Maintenance

## Oiling the Trimmer Blade

**Note:** The trimmer blade should be oiled before and after each use.

1. Stop the motor and remove the battery.
2. Clean dirt and debris from the body of the hedge trimmer, using a damp cloth with a mild detergent.

**Note:** Do not use any strong detergents on the plastic housing or the handle. They can be damaged by certain aromatic oils such as pine and lemon, and by solvents such as kerosene.

3. Lay the hedge trimmer on a flat surface. Apply light weight machine oil along the edge of the top blade. If you will be using the hedge trimmer for an extended period of time, it is advisable to oil the blade during use.

**Note:** Do not oil while the hedge trimmer is running.

## Preparing the Battery Pack for Recycling

### WARNING

**Before recycling, cover the battery pack's terminals with heavy-duty adhesive tape. Do not attempt to destroy or disassemble the battery pack or remove any of its components. Lithium-ion batteries must be recycled or disposed of properly at the nearest battery recycling facility.**

## Service

Should this item need service, take the product to your Authorized Toro Service Dealer. Your Toro Dealer is specially trained to repair Toro products and will ensure that your Toro stays "All" Toro.

## Storage

- Clean all foreign material from the product.
- Store it in a well-ventilated place that is inaccessible to children.
- Keep away from corrosive agents such as garden chemicals and de-icing salts.

## Troubleshooting

Using the battery when it is hot can reduce the operating time. The battery will automatically stop working when it is overheated to prevent damage to it. Remove the battery from the charger and allow it to cool before placing it back into the trimmer.

Using the battery when there is moisture on the leads can cause the trimmer to malfunction. Allow the battery to dry or wipe it dry before placing it back into the trimmer.



**Notes:**

**Notes:**

**Notes:**

## The Toro Promise - Electric Products

### A Two-Year Full Warranty for Residential Use for the United States and Canada

The Toro Company and its affiliate, Toro Warranty Company, pursuant to an agreement between them, jointly warrant this product for two years against defects in material or workmanship when used for normal residential purposes.\*

If you think your Toro Product contains a defect in materials or workmanship, if you have questions or problems, and before returning this product call toll free:

**Trimmers:**

1-800-237-2654 (US)  
1-800-248-3258 (Canada)

**Blowers:**

1-888-367-6631 (US)  
1-888-430-1687 (Canada)

**Snowthrowers:**

1-800-808-2963 (US)  
1-800-808-3072 (Canada)

To receive a replacement or repair, at our option, return the complete unit to the seller. United States and Canada customers may return their product, with proof of purchase, to any Authorized Service Dealer. United States customers may also return their product, with proof of purchase, postage prepaid, to the Toro Service Center, 5500 SE Delaware, Ankeny, IA 50021.

This warranty covers product defects only. **Neither The Toro Company nor Toro Warranty Company is liable for indirect, incidental, or consequential damages in connection with the use of the Toro Products covered by this warranty, including any cost or expense of providing substitute equipment or service during reasonable periods of malfunction or non-use pending completion of repairs under this warranty. Some states do not allow exclusions of incidental or consequential damages, so the above exclusions may not apply to you.** This warranty gives you specific legal rights, and you may also have other rights which vary from state to state.

### Countries Other than the United States and Canada

This warranty is not valid in Mexico. Customers in Mexico, see the following page. Customers who have purchased Toro products exported from the United States or Canada should contact their Toro Distributor (Dealer) to obtain guarantee policies for your country, province, or state. If for any reason you are dissatisfied with your Distributor's service or have difficulty obtaining guarantee information, contact the Toro importer. If all other remedies fail, you may contact us at Toro Warranty Company.

### Australian Consumer Law

Australian customers will find details relating to the Australian Consumer Law either inside the box or at your local Toro Dealer.

\* Residential use means use of the product on the same lot as your home.

Part Number 374-0298 Rev. A

**BRISAGOODS DE MONTERREY S. A. DE C. V.**  
DISTRIBUIDOR MASTER EN MEXICO DE MARCA TORO LÍNEA RESIDENCIAL

**WARRANTY POLICY**

Product:

Brand:

Model:

**Conditions**

BRISAGOODS DE MONTERREY S.A. DE C.V. guarantees for a period of 2 years, that this product, including all its parts and manpower, is free from defects in material and operation, starting on the date of purchase or installation of the product, under the following conditions:

**Conditions**

1. For this warranty to be effective, the consumer must present this policy, duly stamped by the store where the product was purchased, along with the product, to the said store where the product was sold.
2. BRISAGOODS DE MONTERREY S.A. DE C.V. agrees to replace the product free of charge to the consumer and to cover any costs resulting from the application of this warranty.

**WHERE TO MAKE THE WARRANTY VALID:**

In the service centers (see list of Service Centers Annexed to this Warranty Policy) or, if you want, you can call phone at no charge 01-800-450-9350, to locate the nearest Authorized Service Center, where you can also acquire parts, components, supplies and accessories that you need.

The warranty is not valid in the following cases:

1. When the product has been used under conditions other than those considered as normal.
2. When the product has not been operated according to the provided instruction manual.
3. When the product has been modified or repaired by personnel not authorized by the national manufacturer, importer or respective responsible marketer.

---

Imported by: BRISAGOODS DE MONTERREY, S. A DE C. V

VERSALLES #27

COL. JUÁREZ

DELEGACIÓN CUAUHTEMOC

C.P. 06600

MÉXICO D.F.

MÉXICO D.F. PHONE. (55) 14-50-93-50, 55-92-23-10

Stamp of establishment

And date of purchase

**BRISAGOODS DE MONTERREY S. A. DE C. V.**  
DISTRIBUIDOR MASTER EN MEXICO DE MARCA TORO LÍNEA RESIDENCIAL

**AUTHORIZED SERVICE CENTERS**

**VERACRUZ:**

**SERVICIO TECNICO INDUSTRIAL**

PIPILA #180

COLONIA JOSE CARDEL

XALAPA, VERACRUZ

(228) 8 14 19 68

Cabrera\_osw@hotmail.com

ATENCION: DAVID BANDALA SANTIAGO

**INTERNACIONAL DEL GOLFO**

MORELOS 507B

COLONIA CENTRO

C.P. 96400

COATZACOALCO, VERACRUZ

TEL 921 212 4386

921 212 9257

internationaldelgolfo@prodigy.net.mx

ATENCION: FEDERICO SANTOS

**PULSERVER**

AVENIDA 7 #316 ENTRE LA CALLE 3 Y LA CALLE 5

COLONIA CENTRO

C.P. 94500

CORDOBA, VERACRUZ

TEL. 271 714 1241

pulserver@servicios@gmail.com

ATENCION ING. JAVIER BAEZA.

**MOTOSIERRAS PLAN DE AYALA**

INDEPENDENCIA #45

PLANDE AYALA

C.P. 92900

POZA RICA, VERACRUZ

TEL. 782 823 9661

fray\_1999@hotmail.com

ATENCION SR. ROBERTO MARTINEZ.

**PULSERVER**

AVENIDA 20 DE NOVIEMBRE #94

COLONIA CENTRO

C.P. 91170

VERACRUZ, VERACRUZ

TEL. 229 931 3334

pulserver@gmail.com

ATENCION SR. FABIAN PETRILI

---

Imported by: BRISAGOODS DE MONTERREY, S. A DE C. V

VERSALLES #27

COL. JUÁREZ

DELEGACIÓN CUAUHTEMOC

C.P. 06600

MÉXICO D.F.

MÉXICO D.F. PHONE. (55) 14-50-93-50, 55-92-23-10

## **JALISCO**

### **EQUIPO AGROFORESTAL S.A. DE C.V.**

DR. R. MICHEL #51  
COLONIA LAS CONCHAS  
GUADALAJARA, JALISCO  
C.P. 44560  
(33) 36 19 24 47  
equipoagroforestal@gmail.com  
ATENCION: JUAN CARLOS MARTINEZ

## **MORELOS**

### **AGRO Y JARDIN DE MORELOS**

PASEO CHETUMAL # 169  
COLONIA QUINTANA ROO  
C.P. 62060  
CUERNAVACA, MORELOS  
TEL 777 3101 094  
josealtelo@msn.com  
ATENCION JOSE LUIS ALONSO  
FRANCISCO JAVIER ALONSO VALLE

## **YUCATAN**

### **MOTO HERRAMIENTAS**

CALLE #71ª  
LOTE 7 POR LA 124 Y LA 126  
COLONIA MEXICO PONIENTE  
MERIDA, YUCATAN  
999 91 58 98 32  
999 3 29 56 55  
motoherramientas@hotmail.com  
ATENCION: LUCERO ARCILA KED

## **TABASCO**

### **HOSPITAL TECNICO Y SERVICIO INDUSTRIAL**

AV 16 DE SEPTIEMBRE #604  
ESQ. CON PROLONGACION P. DE LA SIERRA  
COLONIA PRIMERO DE MAYO  
VILLAHERMOSA, TABASCO  
993 5 91 75 14  
htecsi@hotmail.com  
ATENCION: MIGUEL BRISEÑO

## **MEXICO D.F.**

### **CASA Y JARDIN**

MONTE ATHOS #105  
COLONIA LOMAS DE CHAPULTEPEC  
DELEG. MIGUEL HIDALGO  
C.P. 11000  
MEXICO D.F.  
(55) 5520 1322  
Juliocastello70@hotmail.com

---

Imported by: BRISAGOODS DE MONTERREY, S. A DE C. V

VERSALLES #27

COL. JUÁREZ

DELEGACIÓN CUAUHTEMOC

C.P. 06600

MÉXICO D.F.

MÉXICO D.F. PHONE. (55) 14-50-93-50, 55-92-23-10

**ESTADO DE MEXICO:****CASA Y JARDIN**

AV. DR. JIMENEZ CANTU S/N  
ZONA COMERCIAL RANCHO SAN JUAN  
ZONA ESMERALDA  
ATIZAPAN DE ZARAGOZA  
ESTADO DE MEXICO  
(55) 5308 3664  
Juliocastello70@hotmail.com

**CASA Y JARDIN**

AV HIDALGO #100  
COL. JUAREZ  
OCOYOACAC, ESTADO DE MEXICO  
(728) 284 1575  
Juliocastello70@hotmail.com

**QUERETARO:****REPARE INC.**

JOSE MA. SOTELO 18A  
COL. VALLE ALAMEDA  
C.P. 76040  
QUERETARO, QUERETARO  
(442) 421 6258  
Zelph.mioni@gmail.com  
ATENCION: ZELPH ELI MIONI MORA

**GUANAJUATO:****MOTOSIERRAS Y BOMBAS DEL BAJIO**

HILARIO MEDINA #1101  
COL. COECILLOS  
C.P. 37260  
LEON, GUANAJUATO  
TEL (477) 763 4198  
ericka\_ramos20@hotmail.com  
ATENCION: ERIKA RAMOS

**PUEBLA, TLAXCALA:****DAVI-CONET**

CALLE METEPEC MANZANA 8 LOTE 6  
COLONIA EL REFUGIO  
C.P. 72495  
PUEBLA, PUEBLA  
servicio@daviconet.com.mx  
TEL 222 889 4025  
ATENCION ING. JUAN MANUEL CERVANTES LOPEZ.

**QUINTANA ROO:****TECNOLOGIA EN RIEGO DE MEXICO S.A DE C.V.**

CALLE 76 LOTE 001 LOCAL 1  
C.P. 77710  
SOLIDARIDAD, QUINTANA ROO  
TEL. 984 803 1098  
termsa@termsa.com

---

Imported by: BRISAGOODS DE MONTERREY, S. A DE C. V

VERSALLES #27

COL. JUÁREZ

DELEGACIÓN CUAUHTEMOC

C.P. 06600

MÉXICO D.F.

MÉXICO D.F. PHONE. (55) 14-50-93-50, 55-92-23-10