



# 12 in Cordless Trimmer

Model No. 51487A—Serial No. 315000001 and Up

Model No. 51487AT—Serial No. 315000001 and Up

## Operator's Manual

Model 51487AT does not include a battery or a charger.



If you have questions or problems, call toll free 1-888-367-6631 (US), 1-888-430-1687 (Canada), or 1-800-450-9350 (Mexico) before returning this product.

## General Safety Rules

### ⚠ WARNING

#### CALIFORNIA

#### Proposition 65 Warning

This product contains a chemical or chemicals known to the State of California to cause cancer, birth defects, or reproductive harm.

WARNING: When using electric gardening appliances, basic safety precautions should always be followed to reduce the risk of fire, electric shock, and personal injury, including the following:

#### Read all instructions.

The term "power tool" in all of the warnings refers to your mains-operated (corded) power tool or battery-operated (cordless) power tool.

#### 1. Work area safety

- Keep work area clean and well lit.** Cluttered or dark areas invite accidents
- Do not operate power tools in explosive atmospheres, such as in the presence of flammable liquids, gases or dust.** Power tools create sparks which may ignite the dust or fumes.
- Keep children and bystanders away while operating a power tool.** Distractions can cause you to lose control.

#### 2. Electrical safety

- Power tool plugs must match the outlet. Never modify the plug in any way. Do not use any adapter plugs with earthed (grounded) power tools.** Unmodified plugs and matching outlets will reduce risk of electric shock.
- Avoid body contact with earthed or grounded surfaces.** There is an increased risk of electric shock if your body is earthed or grounded.
- Do not abuse the cord. Never use the cord for carrying, pulling or unplugging the power tool.**

Keep cord away from heat, oil, sharp edges or moving parts. Damaged or entangled cords increase the risk of electric shock.

- Do not expose power tools to rain or wet conditions.** Water entering a power tool will increase the risk of electric shock.
- If operating a power tool in a damp location is unavoidable, use a supply protected by a residual current device (RCD) in AUS or a ground fault interrupt (GFI) in the USA.** Use of an RCD or GFI reduces the risk of electric shock.

#### 3. Personal safety

- Stay alert, watch what you are doing and use common sense when operating a power tool. Do not use a power tool while you are tired or under the influence of drugs, alcohol or medication.** A moment of inattention while operating power tools may result in serious personal injury.
- Use personal protective equipment. Always wear eye protection.** Protective equipment such as dust mask, non-skid safety shoes, hard hat, or hearing protection used for appropriate conditions will reduce personal injuries.
- Prevent unintentional starting. Ensure the switch is in the off-position before connecting to power source and/or battery pack, picking up or carrying the tool.** Carrying power tools with your finger on the switch or energizing power tools that have the switch on invites accidents.
- Remove any adjusting key or wrench before turning the power tool on.** A wrench or a key left attached to a rotating part of the power tool may result in personal injury.
- Do not overreach. Keep proper footing and balance at all times.** This enables better control of the power tool in unexpected situations.
- Dress properly. Do not wear loose clothing or jewelry. Keep your hair, clothing and gloves away from moving parts.** Loose clothes, jewelry, or long hair can be caught in moving parts.
- Keep hands and feet away from the cutting area.**

#### 4. Power tool use and care



- A. **Do not force the power tool. Use the correct power tool for your application.** *The correct power tool will do the job better and safer at the rate for which it was designed.*
- B. **Do not use the power tool if the switch does not turn it on and off.** *Any power tool that cannot be controlled with the switch is dangerous and must be repaired.*
- C. **Disconnect the plug from the power source and/or the battery pack from the power tool before making any adjustments, changing accessories, or storing power tools.** *Such preventive safety measures reduce the risk of starting the power tool accidentally.*
- D. **Store idle power tools out of the reach of children and do not allow persons unfamiliar with the power tool or these instructions to operate the power tool.** *Power tools are dangerous in the hands of untrained users.*
- E. **Store idle appliances indoors.** *When not in use, appliances should be stored indoors in a dry and high or locked-up place, out of the reach of children.*
- F. **Maintain power tools. Check for misalignment or binding of moving parts, breakage of parts and any other condition that may affect the power tools operation. If damaged, have the power tool repaired before use.** *Many accidents are caused by poorly maintained power tools.*
- G. **Use the power tool in accordance with these instructions and in the manner intended for the particular type of power tool, taking into account the working conditions and the work to be performed.** *Use of the power tool for operations different from those intended could result in a hazardous situation.*
- H. **Keep guards in place and in working order.**

## 5. Service

Have your power tool serviced by a qualified repair person using only identical replacement parts. *This will ensure that the safety of the power tool is maintained.*

## 6. Battery Safety

- A. Do not charge appliance in rain, or in wet locations.
- B. Do not use battery-operated appliance in the rain.
- C. Use only the following type and size battery: Toro battery model 88504 or 88506(A) and battery charger 88503(A).
- D. Remove or disconnect the battery before servicing, cleaning, or removing material from the gardening appliance.
- E. Do not dispose of the battery in a fire. The cell may explode. Check with local codes for possible special disposal instructions.
- F. Do not open or mutilate the battery. Released electrolyte is corrosive and may cause damage to the eyes or skin. It may be toxic if swallowed.
- G. Exercise care in handling batteries in order not to short the battery with conducting materials such as rings, bracelets, and keys. The battery or conductor may overheat and cause burns.
- H. Charging time will be increased if the battery is charged when the temperature is not between 41 to 104 degrees F (5 to 40 degrees C).

The device should not be used by persons (including children) with reduced physical, sensory or mental capabilities, or lack of experience and knowledge, unless they receive supervision or training.

Children should be supervised to not use the appliance as a toy.

If the power cord is damaged, it must be replaced by the manufacturer, its authorized service agent, or a similarly qualified person in order to avoid hazard.

**SAVE THESE INSTRUCTIONS FOR FUTURE USE.**

# Safety and Instructional Decals



Safety decals and instructions are easily visible to the operator and are located near any area of potential danger. Replace any decal that is damaged or lost.

Symbol	Name	Designation/Explanation
DC	Direct current	Type of current
V	Volts	Voltage

**24 V  $\equiv$  MAX\***  
 0.065" line / 1.65mm ligne / 1.65mm línea  
 \*Maximum initial voltage without workload, as rated by battery manufacturer. Under workload, nominal voltage is 21.6 V  $\equiv$   
 \*Tension initiale maximale sans charge, telle qu'indiquée par le fabricant de la batterie. Mesurée sous charge, la tension nominale est de 21.6 V  $\equiv$   
 \*Voltaje máximo inicial sin carga, según el fabricante de la batería. Bajo carga, el voltaje nominal es de 21.6 V  $\equiv$

**WARNING** TO REDUCE THE RISK OF INJURY, USER MUST READ INSTRUCTION MANUAL.  
 Do not expose to rain. Use only Toro battery model 88504 & 88506(A).

**AVERTISSEMENT** POUR RÉDUIRE LES RISQUES DE BLESSURES, LISEZ ATTENTIVEMENT LE MANUEL DE L'UTILISATEUR.  
 Ne l'exposez pas à la pluie. Utilisez uniquement avec batterie TORO 88504 & 88506(A).

**ADVERTENCIA** PARA REDUCIR EL RIESGO DE LESIONES, EL USUARIO DEBE LEER EL MANUAL DE INSTRUCCIONES.  
 No exponer a la lluvia. Utilizar únicamente baterías Toro modelos 88504 y 88506(A).

131-0358

**WARNING**  
 To reduce risk of injury to persons, remove battery pack when not in use. Use safety glasses or similar eye protection.

**AVERTISSEMENT**  
 Pour réduire les risques de blessures corporelles, retirez l'ensemble batterie quand la machine ne sert pas. Portez des lunettes de sécurité ou autres protections oculaires du même genre.

**ADVERTENCIA**  
 Para reducir el riesgo de lesiones personales, retire la batería si no está usando. Utilice gafas de seguridad o protección ocular similar.

**WARNING**  
 To reduce the risk of injury to persons, do not operate without guards in place.

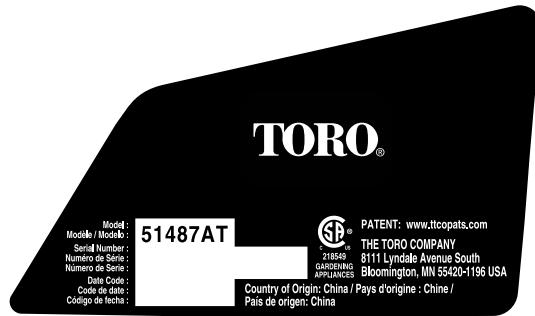
**AVERTISSEMENT**  
 Pour réduire les risques de blessures, n'utilisez jamais la machine sans ses protections.

**ADVERTENCIA**  
 Para reducir el riesgo de lesiones personales, no utilizar si no están colocados los protectores.

131-0360



131-0357



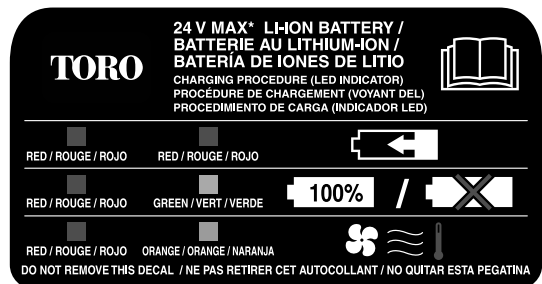
131-0376



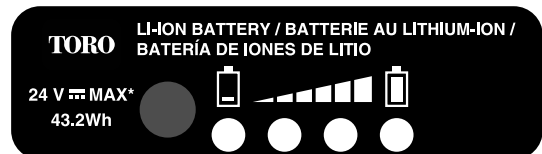
131-0370



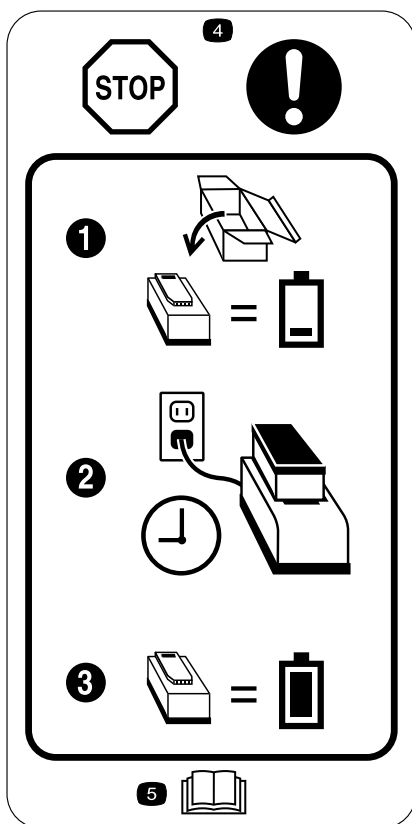
131-0372



131-0369



131-0371



125-8329

1. The battery does not come out of the box fully charged.
2. Place the battery in the battery charger.
3. Wait until the battery is fully charged before first use.
4. Stop—follow these instructions before first use.
5. Read the *Operator's Manual*.

#### CORDLESS TRIMMER

24 Vcc Máx.  
(Use Li-Ion battery: 24 Vcc Máx. 1.5 A)

Imported by: BRISAGOODS DE MONTERREY, S. A. DE C. V.  
Versalles No. 27, Colonia Juárez, Delegación Cuauhtemoc,  
México, D. F. C. P. 06600

131-0385

## Setup

### Loose Parts

Use the chart below to verify that all parts have been shipped.

Description	Qty.	Use
Screw	2	Mount the wall-mounting bracket.
Wall-mounting bracket	1	
No parts required	—	
Auxiliary handle	1	Install the auxiliary handle.
Latch	1	
Brace	1	
Guard	1	Mount the guard to the base of the trimmer.
Phillips screw	1	
Wire edge guard	1	Install the edge guard

# Mounting the Wall-Mounting Bracket

**Note:** The bracket should be mounted indoors and the trimmer should be out of the reach of children.

1. Place the bracket against the wall and mark the 2 hole locations.
2. Drill the pilot holes.
  - A. If mounting the bracket on wall board, plaster, or cement, drill 2 holes for the wall anchors (not supplied) at the marked locations.
  - B. If mounting the bracket on wood, drill 2 holes slightly smaller than the diameter of the screw threads at the marked locations.
3. Install the screws (Figure 1).
  - A. If mounting the bracket on wall board, plaster, or cement, insert the 2 wall anchors (not supplied) into the holes then thread the screws into the wall anchors.
  - B. If installing the bracket on wood, drive the 2 screws into the wall.

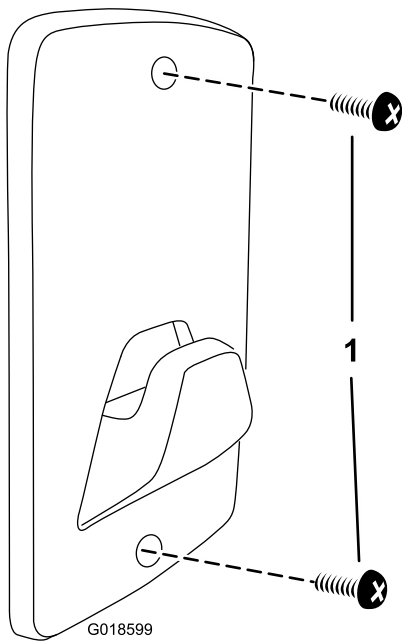


Figure 1

1. Screw

# Assembling the Trimmer

1. Slide the upper pole into the lower pole, lining up the groove in the upper pole with the groove in the lower pole, and tighten the screw until the gap between the ends of the clamp is 3 mm (1/8 inch) (Figure 2).

**Note:** Use a 10 mm wrench to tighten the screw.

**Note:** The upper pole should bottom out in the lower pole.

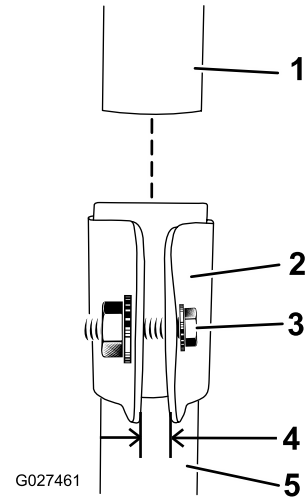


Figure 2

1. Upper pole
2. Clamp
3. Screw
4. 3 mm (1/8 inch) gap
5. Lower pole

2. Cut the cable tie away from you and remove it from the trigger handle (Figure 3).

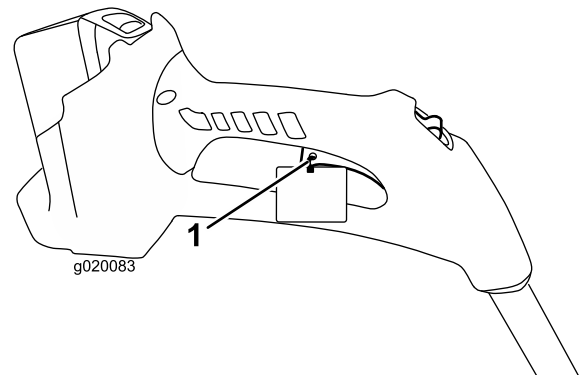
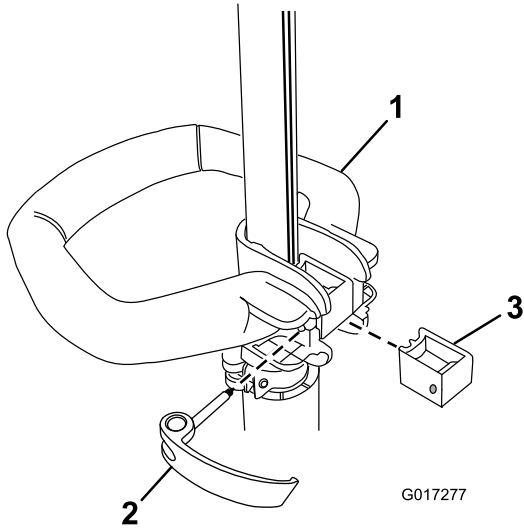


Figure 3

1. Zip-tie

## Installing the Auxiliary Handle

1. Position the auxiliary handle on the shaft of the trimmer with the smooth surface facing the operator ([Figure 4](#)).



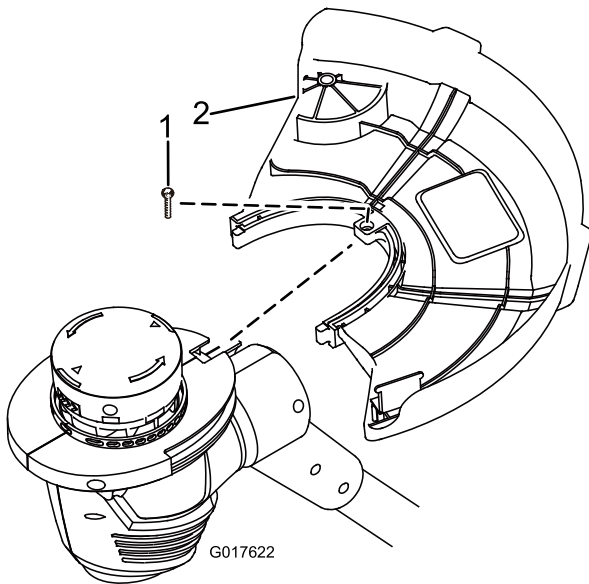
**Figure 4**

1. Auxiliary handle
2. Latch
3. Brace

2. Slide the brace into the auxiliary handle so that the brace rests in the groove along the shaft ([Figure 4](#)).
3. Slide the latch from the left through the handle and brace as shown, and tighten the latch screw with a Phillips screwdriver ([Figure 4](#)).

## Installing the Guard

1. Remove the Phillips screw taped to the guard ([Figure 5](#)).
2. Slide the guard onto the trimmer base as shown in [Figure 5](#).



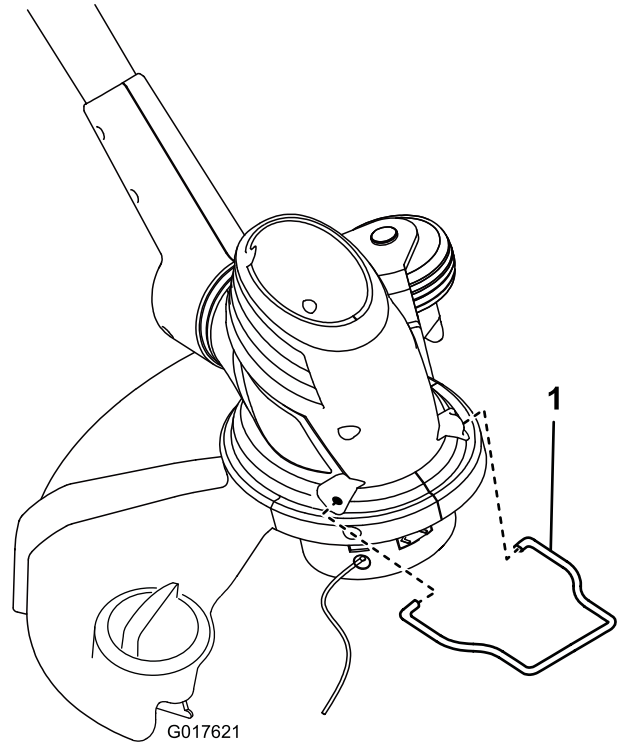
**Figure 5**

1. Phillips screw
2. Guard

3. Secure the guard using a Phillips screw.

## Installing the Edge Guard

Insert the ends of the wire edge guard into the holes in the trimmer housing, as shown in [Figure 6](#).



**Figure 6**

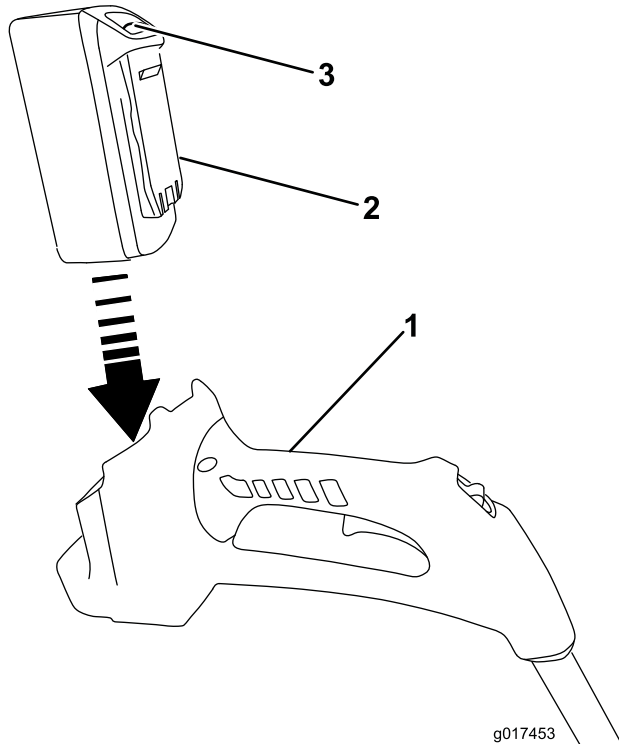
1. Wire edge guard

# Operation

**Important:** The battery pack is not fully charged when it is purchased. Before using the trimmer for the first time, refer to [Charging the Battery Pack \(page 7\)](#). Make sure to read all safety precautions. If storing for a prolonged period of time, remove the battery. When ready to use again, charge the battery pack; refer to [Charging the Battery Pack \(page 7\)](#).

## Starting the Trimmer

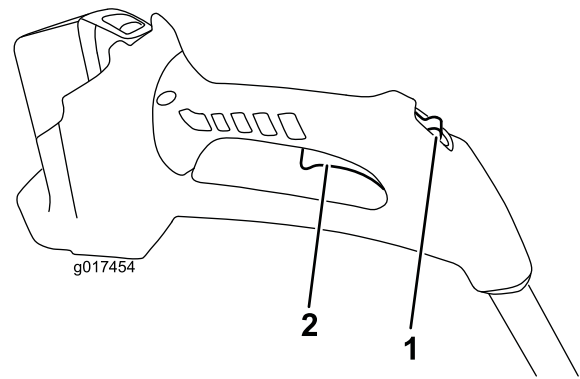
1. Align the tongue of the battery pack with the cavity in the handle housing ([Figure 7](#)).



**Figure 7**

1. Trigger handle
2. Tongue
3. Latch

2. Grasp the trigger handle ([Figure 7](#)).
3. Push the battery pack into the handle until the latch locks into place.
4. Slide the lock switch back to the On position, then squeeze the trigger ([Figure 8](#)).



**Figure 8**

1. Lock switch
2. Trigger

## Stopping the Trimmer

To stop the trimmer, release the trigger.

## Charging the Battery Pack

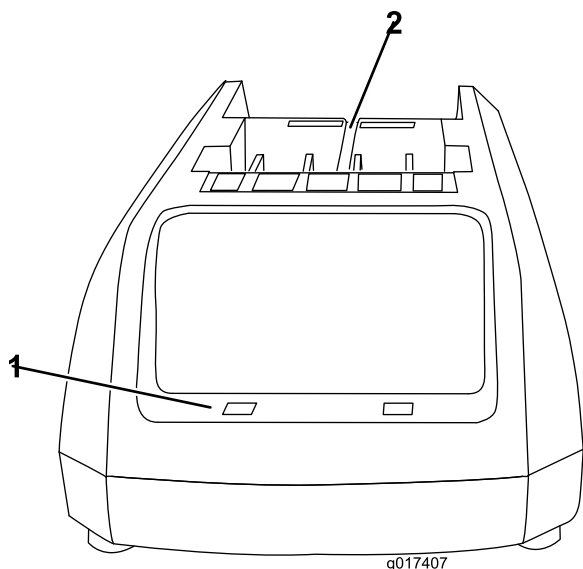
### ⚠ WARNING

#### CALIFORNIA Proposition 65 Warning

**WARNING:** The power cord on this product contains lead, a chemical known to the State of California to cause birth defects or other reproductive harm. Wash hands after handling.

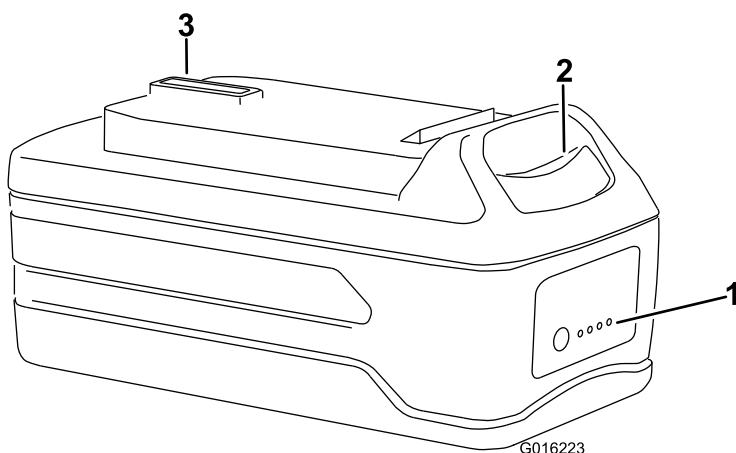
**Important:** For best results, your battery pack should be charged in a location where the temperature is more than 5 degrees C (41 degrees F) but less than 40 degrees C (104 degrees F). To reduce the risk of serious personal injury, do not store outside or in vehicles. Charging time will be increased if not charged within this range.

1. Turn the battery upside down and line up the battery terminal with the slot in the charger ([Figure 9](#) and [Figure 10](#)).



**Figure 9**

1. LED indicator (2)      2. Insert battery here



**Figure 10**

1. LED indicators (level of charge)      3. Battery terminal  
2. Release button

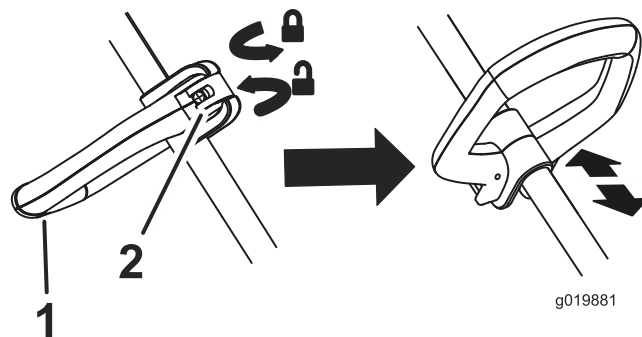
2. Slide the battery into the charger until it clicks into place.  
3. Press down on the release button and slide the battery backward out of the charger.

4. Refer to the table below to interpret the LED indicators on the battery charger.

LED COLOR		
Left	Right	Indicates:
Red	Red	Battery is charging
Red	Green	Fully charged
Red	Orange	Battery is too warm: Remove it for approximately 30 minutes

## Adjusting the Handle Height and Base Orientation

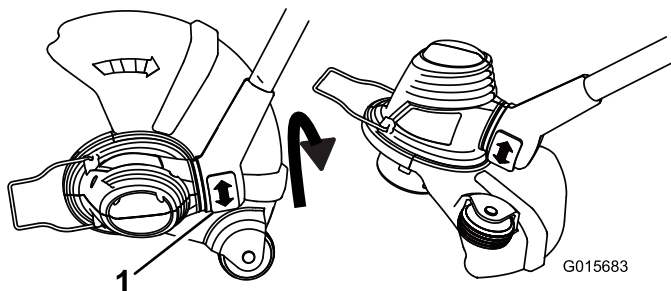
- To adjust the auxiliary handle height, release the auxiliary handle latch, slide the auxiliary handle up or down to the desired height, then secure the auxiliary handle in place by closing the auxiliary latch (Figure 11).



**Figure 11**

1. Auxiliary handle      2. Auxiliary handle latch

- To adjust the orientation of the base, press down on the rotator button located at the base of the shaft, then move the base to face the desired direction (Figure 12).



**Figure 12**

1. Rotator button



## Advancing the Line

The trimmer is equipped with an auto-feed head. **The line will advance 6 mm (1/4 inch) each time you stop and start the trimmer.** When the line reaches the blade in the deflector, it will be cut off at that length.

1. With the trimmer running, release the switch trigger.
2. Wait 2 seconds, then press the switch trigger.
3. Resume trimming.

## Advancing the Line Manually

Disconnect from the power supply, then push the button at the base of the spool retainer while pulling on the trimmer line to manually advance the line.

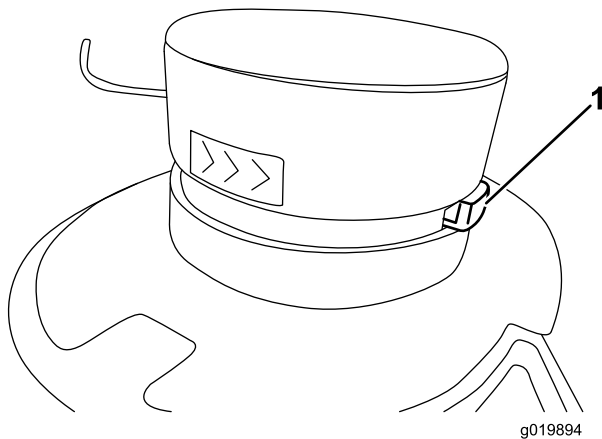


Figure 13

1. Button

## Trimming



Figure 14

## Edging

To use the trimmer as edger, press the rotator button and rotate the head as shown in [Figure 15](#).

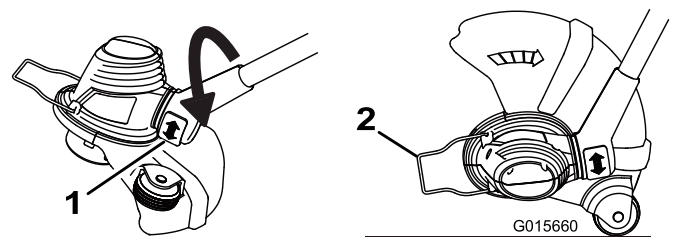


Figure 15

1. Rotator button
2. Edger guide

## Using the Power Saver Feature

Engaging the power saver feature will extend the run time of the battery by shortening the length of the trimmer line and decreasing the load on the motor.

If you are experiencing reduced battery runtime, it is recommended that you engage the power saver feature.

Push down and rotate the power saver knob (Figure 16) 180 degrees (1/2 turn) to shorten the length of the trimmer line. This reduces the power consumption of the trimmer and extends the runtime of the battery.

To resume operation in the regular mode, push down and rotate the power saver knob 180 degrees (1/2 turn).

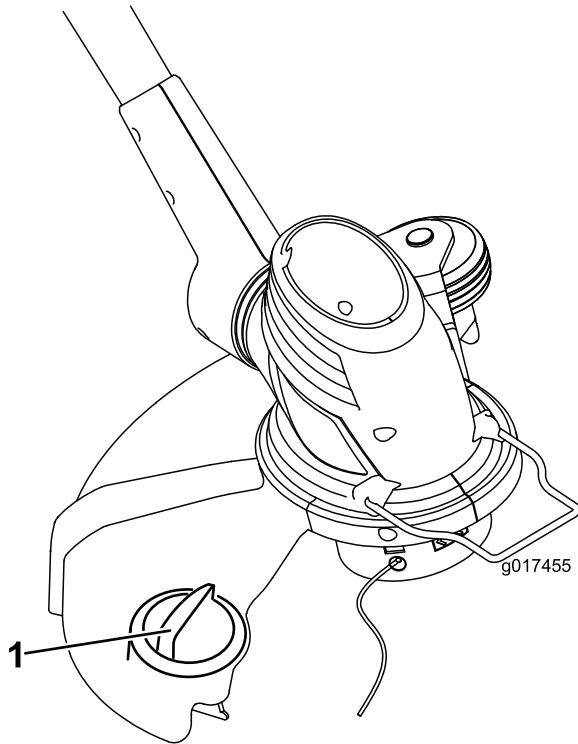


Figure 16

1. Power saver knob

## Operating Tips

- Keep the trimmer tilted toward the area being cut; this is the best cutting area.
- Tilt the trimmer so that the trimmer string is lowest on the right side.
- The trimmer cuts best when passing the unit from left to right. This will also avoid throwing debris at the operator.
- Use the tip of the string to do the cutting; do not force string head into uncut grass.
- Wire and picket fences cause extra string wear, even breakage. Stone and brick walls, curbs, and wood may wear string rapidly.
- Avoid trees and shrubs. Tree bark, wood moldings, siding, and fence posts can easily be damaged by the strings.

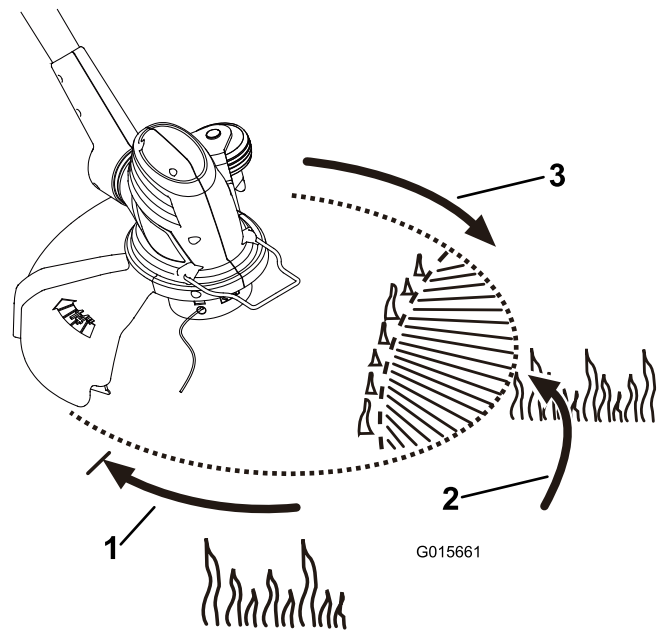


Figure 17

1. Direction of rotation
2. Ideal cutting range
3. String path

## Maintenance

After each use of the trimmer, complete the following:

1. Remove the battery from the trimmer.
2. Wipe the trimmer clean with a damp cloth. **Do not hose the trimmer down or submerge it in water.**

### ⚠ CAUTION

**The line cut-off blade on the deflector is sharp and can cut you. Do not use your hands to clean the deflector shield and blade.**

3. Wipe or scrape clean the cutting head area any time there is an accumulation of debris.
4. Check and tighten all fasteners. If any part is damaged or lost, repair or replace it.
5. Brush debris away from air intake vents on motor housing to prevent the motor from overheating.

## Replacing the Spool

Use only 1.6 mm (.065 inch) diameter monofilament string. Use original manufacturer's replacement string for best performance (Toro part number 88532(A) or 88524(A)).

**Important:** Use of a larger diameter string will cause the motor to overheat and fail.

1. Remove the battery.
2. Push in the tabs on the side of the spool retainer (Figure 18).

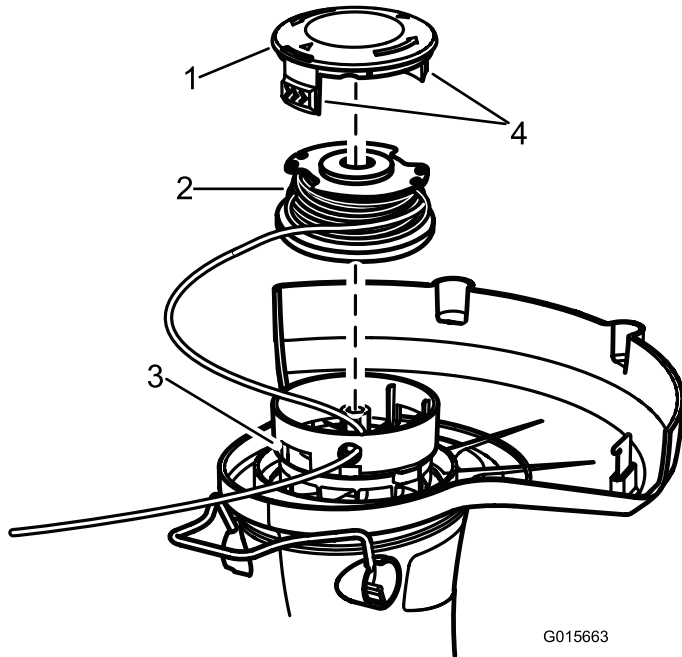


Figure 18

- |                   |          |
|-------------------|----------|
| 1. Spool retainer | 3. Slots |
| 2. Spool          | 4. Tabs  |
3. Pull the spool retainer up to remove it, and remove the spool.
  4. To install the new spool, make sure the string is captured in one of the retaining slots on the new spool. Make sure the end of the string extends approximately 152 mm (6 inches).
  5. Install the new spool so that the string aligns with the eyelet in the string head. Thread the string into the eyelet.
  6. Pull the string extending from the string head so that the string releases from the slot in the spool.
  7. Install the spool retainer by depressing tabs into slots and pushing down until the spool retainer clicks into place.

## Replacing the String

1. Remove the battery.
2. Remove the spool. See Replacing the Spool (Figure 18).

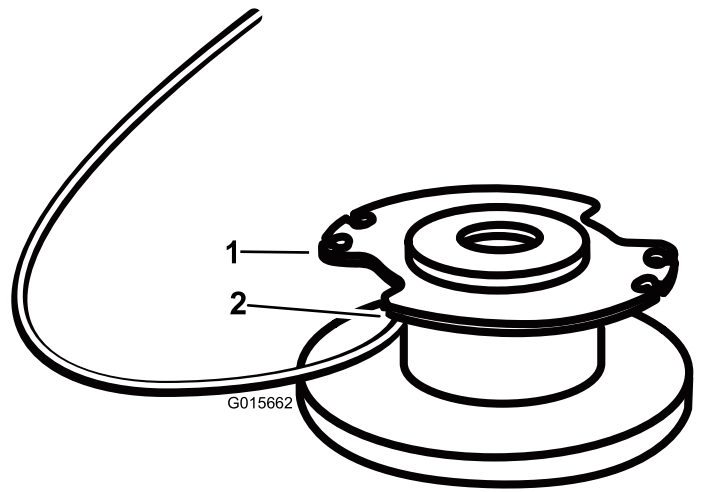


Figure 19

1. Slot in upper spool flange
2. Hole

**Note:** Remove any old string remaining on the spool.

3. The spool will accept up to 4.5 m (15 feet) of string. **Use only 1.6 mm (.065 inch) diameter monofilament string.**

**Note:** Do not use any other gauge or type of string, as this could damage the trimmer.

4. Insert the string into the anchor hole in the upper part of the spool (Figure 19). Wind the string onto the spool in the direction shown by the arrows on the spool.
5. Place the string in the slot on the upper spool flange, leaving about 152 mm (6 inches) extended beyond the slot.

**Note:** Do not overfill. After winding the string, there should be at least 6 mm (1/4 inch) between the wound string and the outside edge of the spool.

6. Replace the spool and the spool retainer. Refer to [Replacing the Spool \(page 11\)](#).

## Preparing the Battery Pack for Recycling

### ⚠ WARNING

**Before recycling, cover the battery pack's terminals with heavy-duty adhesive tape. Do not attempt to destroy or disassemble the battery pack or remove any of its components. Lithium-ion batteries must be recycled or disposed of properly at the nearest battery recycling facility.**

# Service

Should this item need service, take the product to your Authorized Toro Service Dealer. Your Toro Dealer is specially trained to repair Toro products and will ensure that your Toro stays “All” Toro.

# Storage

- Clean all foreign material from the product.
- Store it in a well-ventilated place that is inaccessible to children.
- Keep away from corrosive agents such as garden chemicals and de-icing salts.

# Troubleshooting

Using the battery when it is hot can reduce the operating time. The battery will automatically stop working when it is overheated to prevent damage to it. Remove the battery from the charger and allow it to cool before placing it back into the trimmer.

Using the battery when there is moisture on the leads can cause the trimmer to malfunction. Allow the battery to dry or wipe it dry before placing it back into the trimmer.

Using the trimmer to cut thick grass in temperatures above 32 Celsius (90 Fahrenheit) may reduce the run time. Engage the power saving feature to help increase the operating time. Refer to [Using the Power Saver Feature \(page 9\)](#).

**Notes:**

**Notes:**

**Notes:**

## The Toro Promise - Electric Products

### A Two-Year Full Warranty for Residential Use for the United States and Canada

The Toro Company and its affiliate, Toro Warranty Company, pursuant to an agreement between them, jointly warrant this product for two years against defects in material or workmanship when used for normal residential purposes.\*

If you think your Toro Product contains a defect in materials or workmanship, if you have questions or problems, and before returning this product call toll free:

**Trimmers:**

1-800-237-2654 (US)  
1-800-248-3258 (Canada)

**Blowers:**

1-888-367-6631 (US)  
1-888-430-1687 (Canada)

**Snowthrowers:**

1-800-808-2963 (US)  
1-800-808-3072 (Canada)

To receive a replacement or repair, at our option, return the complete unit to the seller. United States and Canada customers may return their product, with proof of purchase, to any Authorized Service Dealer. United States customers may also return their product, with proof of purchase, postage prepaid, to the Toro Service Center, 5500 SE Delaware, Ankeny, IA 50021.

This warranty covers product defects only. **Neither The Toro Company nor Toro Warranty Company is liable for indirect, incidental, or consequential damages in connection with the use of the Toro Products covered by this warranty, including any cost or expense of providing substitute equipment or service during reasonable periods of malfunction or non-use pending completion of repairs under this warranty. Some states do not allow exclusions of incidental or consequential damages, so the above exclusions may not apply to you.** This warranty gives you specific legal rights, and you may also have other rights which vary from state to state.

### Countries Other than the United States and Canada

This warranty is not valid in Mexico. Customers in Mexico, see the following page. Customers who have purchased Toro products exported from the United States or Canada should contact their Toro Distributor (Dealer) to obtain guarantee policies for your country, province, or state. If for any reason you are dissatisfied with your Distributor's service or have difficulty obtaining guarantee information, contact the Toro importer. If all other remedies fail, you may contact us at Toro Warranty Company.

### Australian Consumer Law

Australian customers will find details relating to the Australian Consumer Law either inside the box or at your local Toro Dealer.

\* Residential use means use of the product on the same lot as your home.

Part Number 374-0298 Rev. A



**BRISAGOODS DE MONTERREY S. A. DE C. V.**  
DISTRIBUIDOR MASTER EN MEXICO DE MARCA TORO LÍNEA RESIDENCIAL

**WARRANTY POLICY**

Product:

Brand:

Model:

**Conditions**

BRISAGOODS DE MONTERREY S.A. DE C.V. guarantees for a period of 2 years, that this product, including all its parts and manpower, is free from defects in material and operation, starting on the date of purchase or installation of the product, under the following conditions:

**Conditions**

1. For this warranty to be effective, the consumer must present this policy, duly stamped by the store where the product was purchased, along with the product, to the said store where the product was sold.
2. BRISAGOODS DE MONTERREY S.A. DE C.V. agrees to replace the product free of charge to the consumer and to cover any costs resulting from the application of this warranty.

**WHERE TO MAKE THE WARRANTY VALID:**

In the service centers (see list of Service Centers Annexed to this Warranty Policy) or, if you want, you can call phone at no charge 01-800-450-9350, to locate the nearest Authorized Service Center, where you can also acquire parts, components, supplies and accessories that you need.

The warranty is not valid in the following cases:

1. When the product has been used under conditions other than those considered as normal.
2. When the product has not been operated according to the provided instruction manual.
3. When the product has been modified or repaired by personnel not authorized by the national manufacturer, importer or respective responsible marketer.

---

Imported by: BRISAGOODS DE MONTERREY, S. A DE C. V

VERSALLES #27

COL. JUÁREZ

DELEGACIÓN CUAUHTEMOC

C.P. 06600

MÉXICO D.F.

MÉXICO D.F. PHONE. (55) 14-50-93-50, 55-92-23-10

Stamp of establishment

And date of purchase

**BRISAGOODS DE MONTERREY S. A. DE C. V.**  
DISTRIBUIDOR MASTER EN MEXICO DE MARCA TORO LÍNEA RESIDENCIAL

**AUTHORIZED SERVICE CENTERS**

**VERACRUZ:**

**SERVICIO TECNICO INDUSTRIAL**

PIPILA #180

COLONIA JOSE CARDEL

XALAPA, VERACRUZ

(228) 8 14 19 68

Cabrera\_osw@hotmail.com

ATENCION: DAVID BANDALA SANTIAGO

**INTERNACIONAL DEL GOLFO**

MORELOS 507B

COLONIA CENTRO

C.P. 96400

COATZACOALCO, VERACRUZ

TEL 921 212 4386

921 212 9257

internationaldelgolfo@prodigy.net.mx

ATENCION: FEDERICO SANTOS

**PULSERVER**

AVENIDA 7 #316 ENTRE LA CALLE 3 Y LA CALLE 5

COLONIA CENTRO

C.P. 94500

CORDOBA, VERACRUZ

TEL. 271 714 1241

pulserver@servicios@gmail.com

ATENCION ING. JAVIER BAEZA.

**MOTOSIERRAS PLAN DE AYALA**

INDEPENDENCIA #45

PLANDE AYALA

C.P. 92900

POZA RICA, VERACRUZ

TEL. 782 823 9661

fray\_1999@hotmail.com

ATENCION SR. ROBERTO MARTINEZ.

**PULSERVER**

AVENIDA 20 DE NOVIEMBRE #94

COLONIA CENTRO

C.P. 91170

VERACRUZ, VERACRUZ

TEL. 229 931 3334

pulserver@gmail.com

ATENCION SR. FABIAN PETRILI

---

Imported by: BRISAGOODS DE MONTERREY, S. A DE C. V

VERSALLES #27

COL. JUÁREZ

DELEGACIÓN CUAUHTEMOC

C.P. 06600

MÉXICO D.F.

MÉXICO D.F. PHONE. (55) 14-50-93-50, 55-92-23-10

## **JALISCO**

### **EQUIPO AGROFORESTAL S.A. DE C.V.**

DR. R. MICHEL #51  
COLONIA LAS CONCHAS  
GUADALAJARA, JALISCO  
C.P. 44560  
(33) 36 19 24 47  
equipoagroforestal@gmail.com  
ATENCION: JUAN CARLOS MARTINEZ

## **MORELOS**

### **AGRO Y JARDIN DE MORELOS**

PASEO CHETUMAL # 169  
COLONIA QUINTANA ROO  
C.P. 62060  
CUERNAVACA, MORELOS  
TEL 777 3101 094  
josealtelo@msn.com  
ATENCION JOSE LUIS ALONSO  
FRANCISCO JAVIER ALONSO VALLE

## **YUCATAN**

### **MOTO HERRAMIENTAS**

CALLE #71ª  
LOTE 7 POR LA 124 Y LA 126  
COLONIA MEXICO PONIENTE  
MERIDA, YUCATAN  
999 91 58 98 32  
999 3 29 56 55  
motoherramientas@hotmail.com  
ATENCION: LUCERO ARCILA KED

## **TABASCO**

### **HOSPITAL TECNICO Y SERVICIO INDUSTRIAL**

AV 16 DE SEPTIEMBRE #604  
ESQ. CON PROLONGACION P. DE LA SIERRA  
COLONIA PRIMERO DE MAYO  
VILLAHERMOSA, TABASCO  
993 5 91 75 14  
htecsi@hotmail.com  
ATENCION: MIGUEL BRISEÑO

## **MEXICO D.F.**

### **CASA Y JARDIN**

MONTE ATHOS #105  
COLONIA LOMAS DE CHAPULTEPEC  
DELEG. MIGUEL HIDALGO  
C.P. 11000  
MEXICO D.F.  
(55) 5520 1322  
Juliocastello70@hotmail.com

---

Imported by: BRISAGOODS DE MONTERREY, S. A DE C. V

VERSALLES #27

COL. JUÁREZ

DELEGACIÓN CUAUHTEMOC

C.P. 06600

MÉXICO D.F.

MÉXICO D.F. PHONE. (55) 14-50-93-50, 55-92-23-10

**ESTADO DE MEXICO:****CASA Y JARDIN**

AV. DR. JIMENEZ CANTU S/N  
ZONA COMERCIAL RANCHO SAN JUAN  
ZONA ESMERALDA  
ATIZAPAN DE ZARAGOZA  
ESTADO DE MEXICO  
(55) 5308 3664  
Juliocastello70@hotmail.com

**CASA Y JARDIN**

AV HIDALGO #100  
COL. JUAREZ  
OCOYOACAC, ESTADO DE MEXICO  
(728) 284 1575  
Juliocastello70@hotmail.com

**QUERETARO:****REPARE INC.**

JOSE MA. SOTELO 18A  
COL. VALLE ALAMEDA  
C.P. 76040  
QUERETARO, QUERETARO  
(442) 421 6258  
Zelph.mioni@gmail.com  
ATENCION: ZELPH ELI MIONI MORA

**GUANAJUATO:****MOTOSIERRAS Y BOMBAS DEL BAJIO**

HILARIO MEDINA #1101  
COL. COECILLOS  
C.P. 37260  
LEON, GUANAJUATO  
TEL (477) 763 4198  
ericka\_ramos20@hotmail.com  
ATENCION: ERIKA RAMOS

**PUEBLA, TLAXCALA:****DAVI-CONET**

CALLE METEPEC MANZANA 8 LOTE 6  
COLONIA EL REFUGIO  
C.P. 72495  
PUEBLA, PUEBLA  
servicio@daviconet.com.mx  
TEL 222 889 4025  
ATENCION ING. JUAN MANUEL CERVANTES LOPEZ.

**QUINTANA ROO:****TECNOLOGIA EN RIEGO DE MEXICO S.A DE C.V.**

CALLE 76 LOTE 001 LOCAL 1  
C.P. 77710  
SOLIDARIDAD, QUINTANA ROO  
TEL. 984 803 1098  
termsa@termsa.com

---

Imported by: BRISAGOODS DE MONTERREY, S. A DE C. V

VERSALLES #27

COL. JUÁREZ

DELEGACIÓN CUAUHTEMOC

C.P. 06600

MÉXICO D.F.

MÉXICO D.F. PHONE. (55) 14-50-93-50, 55-92-23-10