



Z MASTER™

Vacuum Bagger

for 52" Z222 Mower

Model No. 79433 – 790001 & Up

Operator's Manual

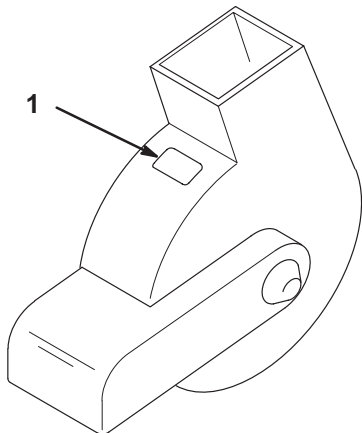
IMPORTANT: Read this manual carefully. It contains information about your safety and the safety of others. Also become familiar with the controls and their proper use before you operate the product.

Introduction

Thank you for purchasing a Toro product.

All of us at Toro want you to be completely satisfied with your new product, so feel free to contact your local Authorized Service Dealer for help with service, genuine Toro replacement parts, or other information you may require.

Whenever you contact your Authorized Service Dealer or the factory, always know the model and serial numbers of your product. These numbers will help the Service Dealer or Service Representative provide exact information about your specific product. You will find the model and serial number plate located in a unique place on the product as shown below.



1815

1. Model and Serial Number Plate

For your convenience, write the product model and serial numbers in the space below.

Model No: _____
Serial No. _____

Read this manual carefully to learn how to operate and maintain your product correctly. Reading this manual will help you and others avoid personal injury and damage to the product. Although Toro designs, produces and markets safe, state-of-the-art products, you are responsible for using the product properly and safely. You are also responsible for training persons who you allow to use the product about safe operation.

The Toro warning system in this manual identifies potential hazards and has special safety messages that help you and others avoid personal injury, even death. **DANGER**, **WARNING** and **CAUTION** are signal words used to identify the level of hazard. However, regardless of the hazard, be extremely careful.

DANGER signals an extreme hazard that will cause serious injury or death if the recommended precautions are not followed.

WARNING signals a hazard that may cause serious injury or death if the recommended precautions are not followed.

CAUTION signals a hazard that may cause minor or moderate injury if the recommended precautions are not followed.

Two other words are also used to highlight information. “Important” calls attention to special mechanical information and “Note” emphasizes general information worthy of special attention.

The left and right side of the machine is determined by sitting on the seat in the normal operator’s position.

Contents

	Page		Page
Safety and Instruction Decals	2	Operation	14
Installation	3	General Operating Instructions	14
Loose Parts	3	Emptying the Canister	15
For Optimum Performance with your		Maintenance	16
Vacuum Bagger	5	Service Interval Chart	16
Front Weight Kit Safety Requirement	5	Maintenance and Storage	16
Mower Preparation	5	Greasing the Blower Pulley Idler Arm ...	16
Installing the Blower	7	Replacing the Drive Belt	17
Installing the Canister	11	Replacing the Blower Wear Strip	17
Installing the Discharge Hose	13		

Safety and Instruction Decals



Safety decals and instructions are easily visible to the operator and are located near any area of potential danger. Replace any decal that is damaged or lost.

ON BLOWER HOUSING
(Part No. 93-1122)



**ON BLOWER
MOUNTING PLATE**
(Part No. 82-5510)



**ON BLOWER HOUSING
AND
BELT COVER**
(Part No. 79-0350)



**ON TOP OF BLOWER
HOUSING**
(Part No. 79-0360)



**ON CANISTER
SUPPORT**
(Part No. 79-3970)



Installation

Loose Parts

Note: Use the chart below to verify all parts have been shipped.

DESCRIPTION	QTY.	USE
Blower deflector	1	Install deflector to mower deck
Hex bolt – 5/16"-18 x 3/4" (19 mm)	3	
Locknut – 5/16"-18	3	
Drill template	1	Install blower to mower
Blower assembly	1	
Dual pulley	1	
V-Belt	1	
Hex bolt – 5/16"-18 x 3/4" (19 mm)	6	
Locknut – 5/16"-18	6	
Spring clip	1	Install lift assist spring
Hex bolt – 3/8"-16 x 1-1/4" (32 mm)	1	
Locknut – 3/8"-16	1	
Spring bracket assembly – welded	1	
Hex bolt – 1/4"-20 x 5/8" (16 mm)	2	
Locknut – 1/4"-20	2	
Spring lock washer – 1/4" (6 mm)	2	
Support plate	1	
Hex bolt – 5/16"-18 x 1-3/4" (44 mm)	2	
Locknut – 5/16"-18	2	
Knob	1	
Flat washer – 11/32" (9 mm)	1	
Hex nut – 5/16"-18	1	
Eyebolt – 5/16"-18	1	
Extension spring – lift assist	1	

DESCRIPTION	QTY.	USE
Belt cover bracket	1	Install belt cover and pulley shield
Hex bolt – 3/8"-16 x 1-1/4" (32 mm)	1	
Locknut – 3/8"-16	1	
Belt cover	1	
Carriage bolt – 5/16"-18 x 3/4" (19 mm)	1	
Washer – 11/32" (9 mm)	2	
Locknut – 5/16"-18	2	
Flat plate – 1" x 2-1/2" (25 mm x 63 mm)	1	
Pulley shield	1	
Bolt – 5/16"-18 x 1/2" (13 mm), thread-forming	4	
Heat shield	1	Install heat shield to bagger mount
Hex bolt – 5/16"-18 x 5/8" (16 mm)	4	
Flat washer – 11/32" (9 mm)	4	
Locknut – 5/16"-18	4	
Bagger mount	1	Install bagger mount and support bracket to frame
Hex bolt – 3/8"-16 x 2-1/4" (57 mm)	2	
Locknut – 3/8"-16	2	
Hex bolt – 1/2"-13 x 1" (25 mm)	1	
Locknut – 1/2"-13	2	
Support bracket	1	
Hex bolt – 1/2"-13 x 4" (102 mm)	1	
Hairpin cotter	1	
Canister	1	Installs into canister support and bagger mount
Top assembly	1	Install canister top assembly to canister support
Hex bolt – 3/8"-16 x 1-1/4" (32 mm)	2	
Hex bolt – 3/8"-16 x 1-3/4" (44 mm)	2	
Hex bolt – 3/8"-16 x 2-1/4" (57 mm)	2	
Locknut – 3/8"-16	12	
Extension spring	2	
Canister support	1	
Adapter	1	Install discharge hose between blower and top assembly
Hose clamp	1	
Discharge hose	1	
Seal	1	
Tie strap	1	

For Optimum Performance with your Vacuum Bagger

For optimum performance, Toro recommends that you install a High-lift Blade Kit (p/n 56-2390) and a Front Baffle Kit (p/n 68-7210) on the mower deck when you install the Vacuum Bagger.

Front Weight Kit Safety Requirement

DANGER

POTENTIAL HAZARD

- When Vacuum Bagger is attached to the tractor, without Front Weight Kit, the tractor may become unstable.

WHAT CAN HAPPEN

- Loss of traction and stability may cause loss of tractor control.

HOW TO AVOID THE HAZARD

- NEVER operate tractor, equipped with the Vacuum Bagger, unless the Front Weight Kit (p/n 81127) is installed.

IMPORTANT: The tractor requires one Front Weight Kit when equipped with a Vacuum Bagger Attachment.

The tractor requires two Front Weight Kits when equipped with both a Vacuum Bagger Attachment and a ROPS.

Note: The Front Weight Kit (part number 81127) is an accessory for the Z Master™ Tractor, and is purchased separately from the Vacuum Bagger Kit.

Mower Preparation

1. Remove the belt, nut and washer from the right-hand spindle pulley and remove the pulley from the spindle. Save the old pulley for installation when the vacuum bagger is removed. (Fig. 1).
2. Install the new dual pulley (provided with the kit) onto the right-hand spindle and belt using the existing washer and nut. Install the new pulley with the larger diameter pulley down (Fig. 1).
3. Torque the nut to 80–100 ft-lbs. (108–136 N•m).

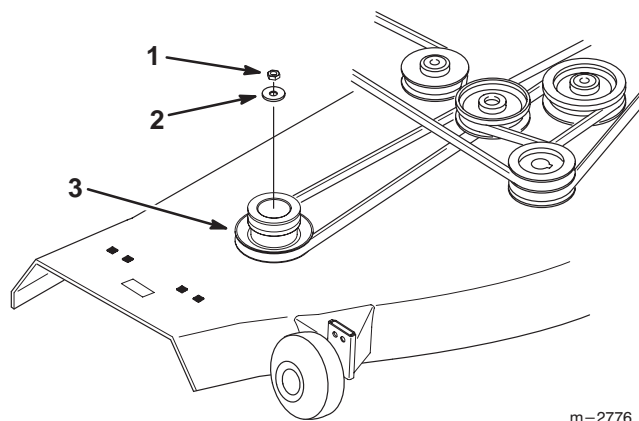


Figure 1

- | | |
|-------------------|--------------------|
| 1. Nut (reuse) | 3. New Dual Pulley |
| 2. Washer (reuse) | |

4. Remove the discharge chute from the mower and save for installation when the vacuum bagger is removed.

5. Align the square holes in the drill template with the square holes in the deck. Mark and drill six (6) 11/32" holes in the top right-hand surface of the mower deck (Fig. 2).

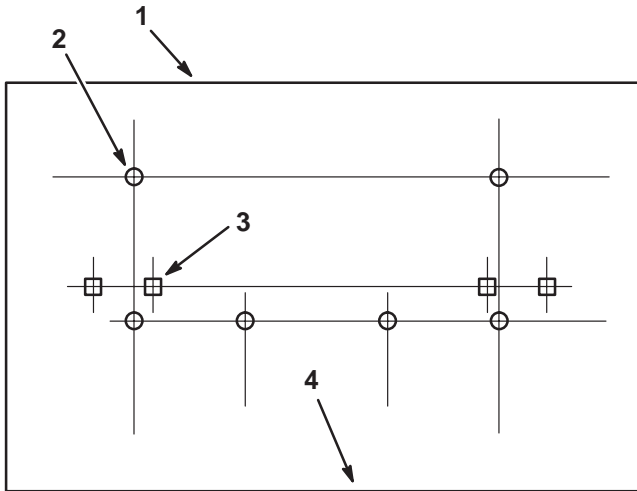


Figure 2

- | | |
|------------------------------------|------------------------------------|
| 1. Drill Template | 3. Align with square holes in deck |
| 2. Mark and drill (6) 11/32" holes | 4. Discharge Opening Side |

6. Mark the location of the lower deflector hole in the front of the mower deck and drill one (1) 11/32" hole (Fig. 3).

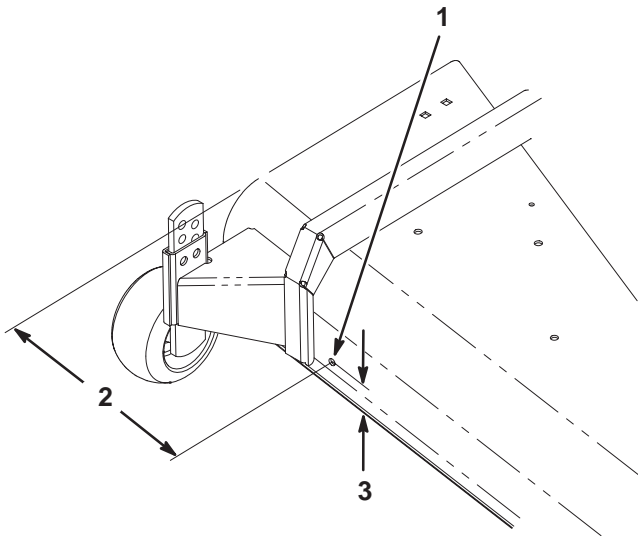
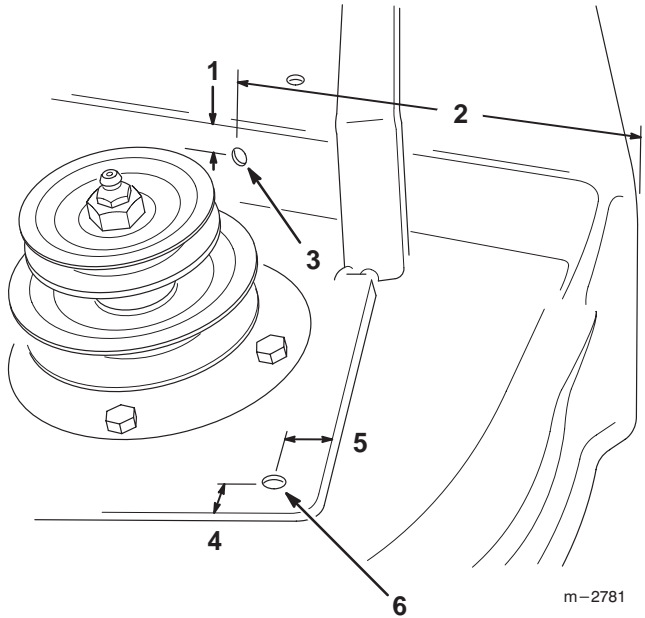


Figure 3

- | | |
|-------------------------------|--|
| 1. Mark and drill 11/32" hole | 3. 7/8" (22 mm) from lowest part of deck |
| 2. 11" (27.9 cm) | |

7. Mark the location of the deflector hole in the rear of the mower deck and drill one (1) 11/32" hole (Fig. 4).
8. Mark the location of the spring clip mounting hole, then drill the 13/32" hole in the deck (Fig. 4).



m-2781

Figure 4

- | | |
|-------------------------------|-------------------------------|
| 1. 7/8" (22 mm) | 4. 3/4" (19 mm) |
| 2. 9-1/2" (24.1 cm) | 5. 1-1/8" (29 mm) |
| 3. Mark and drill 11/32" hole | 6. Mark and drill 13/32" hole |

9. Position the deflector underneath the deck and align the front and rear deflector mounting holes with the drilled holes in the deck. Fasten the deflector to the mower deck with two (2) 5/16"-18 x 3/4" (19 mm) hex bolts and locknuts. Insert the hex bolts from the inside of the deflector (Fig. 5).
10. Using the deflector as a guide, mark and drill the one (1) remaining 11/32" deflector mounting hole in the front of the mower deck (Fig. 5).
11. Finish fastening the deflector to the mower with one (1) 5/16"-18 x 3/4" (19 mm) hex bolt and locknut (Fig. 5).

IMPORTANT: Check to make sure the right-hand mower blade does not hit the deflector. Adjust the position of the deflector if necessary to make sure it clears the blade.

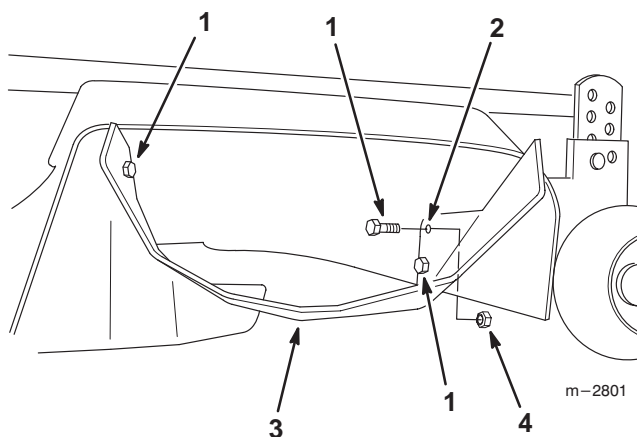


Figure 5

- | | |
|-------------------------------------|-------------------------|
| 1. 5/16"-18 x 3/4" (19 mm) Hex Bolt | 3. Deflector |
| 2. Mark and drill 11/32" hole | 4. 5/16"-18 Locknut (3) |

Installing the Blower

1. Fasten the spring clip to the deck using a 3/8"-16 x 1-1/4" (32 mm) hex bolt and locknut (Fig. 6).
2. Remove the existing fasteners from the spindle mounting hole in the deck, then fasten the belt cover bracket to the spindle hole using a 3/8"-16 x 1-1/4" (32 mm) hex bolt and locknut (Fig. 6).

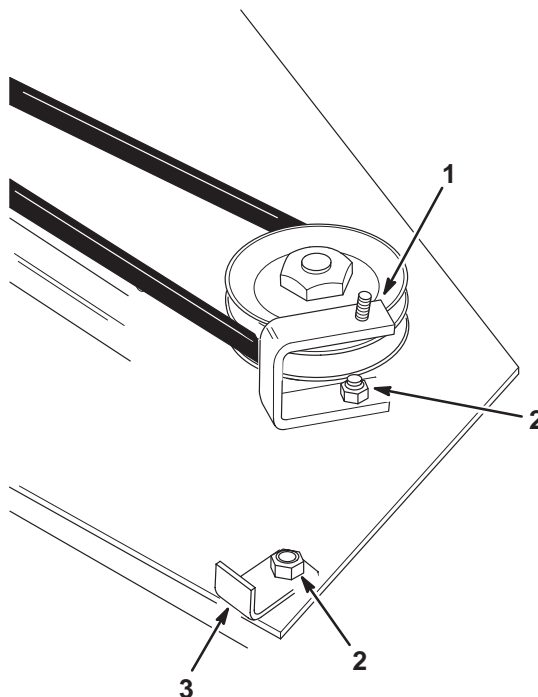


Figure 6

- | | |
|--|----------------|
| 1. Belt Cover Bracket | 3. Spring Clip |
| 2. 3/8"-16 x 1-1/4" (32 mm) Hex Bolt and Locknut | |

12. Inflate the tractor front tires to 12 psi (83 kPa), and the rear tires to 10 psi (69 kPa).

3. Install the blower assembly onto the mower deck using six (6) 5/16"-18 x 3/4" (19 mm) bolts and locknuts. Insert the hex bolts from the bottom of the deck (Fig. 7).

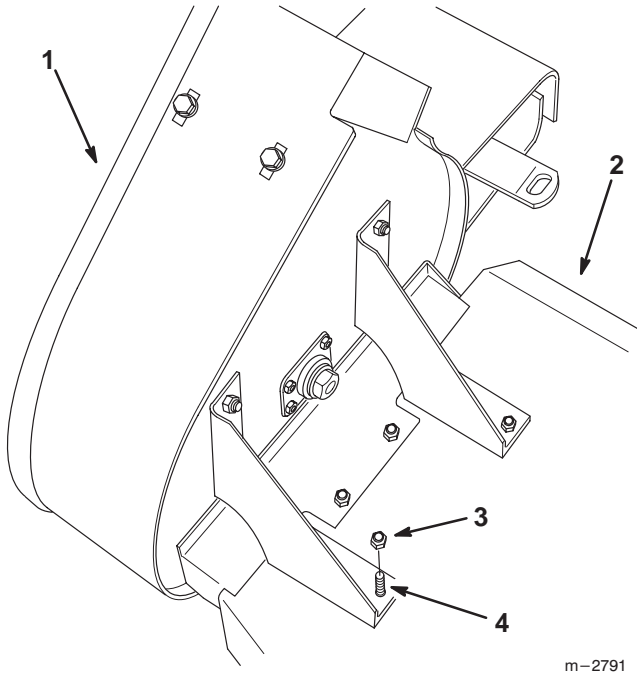


Figure 7

- | | |
|--------------------|-------------------------------------|
| 1. Blower Assembly | 4. 5/16"-18 x 3/4" (19 mm) Bolt (6) |
| 2. Mower Deck | |
| 3. Locknut (6) | |

4. Fasten the spring bracket assembly to the existing holes in the seat frame assembly using two 1/4"-20 x 5/8" (16 mm) hex bolts, spring lock washers and locknuts (Fig. 8).
5. Fasten the support plate to the bottom two holes in the spring bracket assembly using two 5/16"-18 x 1-3/4" (44 mm) hex bolts and locknuts (Fig. 8).
6. Thread a 5/16"-18 hex nut all the way onto the eyebolt to the end of the threads near the "eye" (Fig. 8).
7. Install a 11/32" (9 mm) flat washer and the knob onto the eyebolt (Fig. 8).

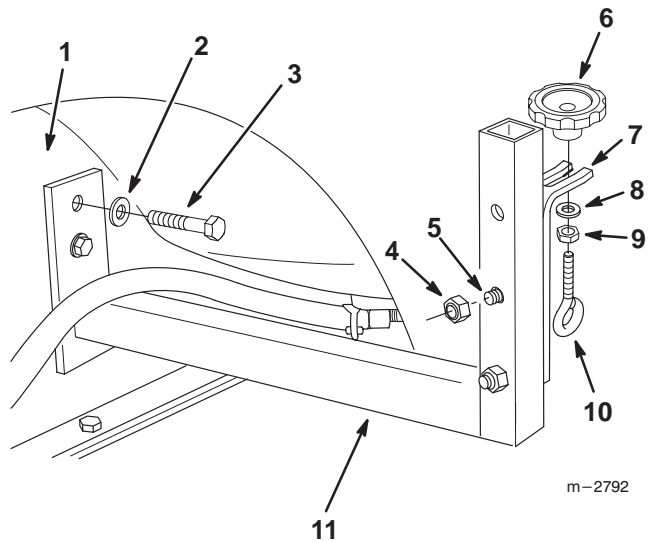
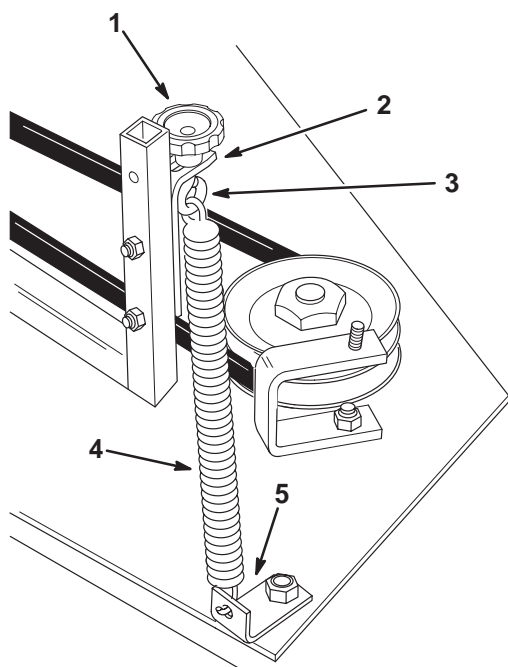


Figure 8

- | | |
|---|------------------------------|
| 1. Seat Frame Assembly | 6. Knob |
| 2. Spring Lock Washer (2) | 7. Support Plate |
| 3. 1/4"-20 x 5/8" (16 mm) Hex Bolt (2) | 8. 11/32" (9 mm) Flat Washer |
| 4. 5/16"-18 Locknut (2) | 9. 5/16"-18 Hex Nut |
| 5. 5/16"-18 x 1-3/4" (44 mm) Hex Bolt (2) | 10. 5/16"-18 Eyebolt |
| | 11. Spring Bracket Assembly |

8. Raise the mower to the highest height-of-cut.
9. Attach the spring to the eyebolt and spring clip (Fig. 9).
10. Stretch the spring by pulling up on the knob, then install the eyebolt and knob into the slot in the support plate. Make sure the 5/16"-18 hex nut and 11/32" (9 mm) flat washer on the eyebolt are below the support plate (Fig. 9).
11. Tighten the knob securely (Fig. 9).
12. Adjust the position of the spring clip on the deck if necessary so the spring is vertical (Fig. 9).



m-2808

Figure 9

- | | |
|------------------|----------------|
| 1. Knob | 4. Spring |
| 2. Support Plate | 5. Spring Clip |
| 3. Eyebolt | |

13. Install the drive belt around the right-hand mower pulley, idler pulleys and blower pulley as shown (Figs. 10 and 11).

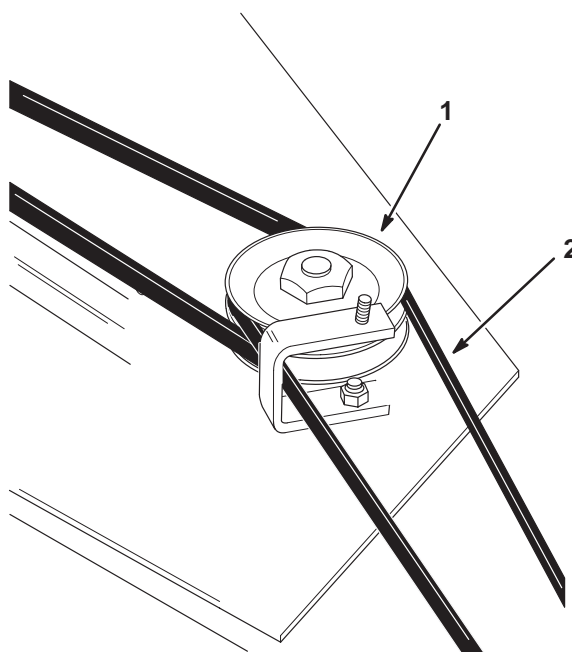
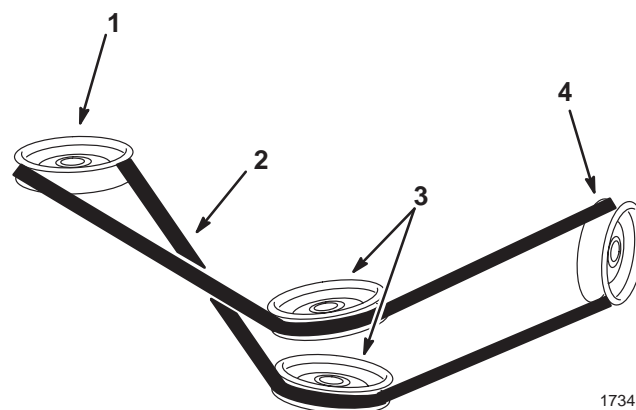


Figure 10

- | | |
|----------------------------|---------------|
| 1. Right-hand Mower Pulley | 2. Drive Belt |
|----------------------------|---------------|

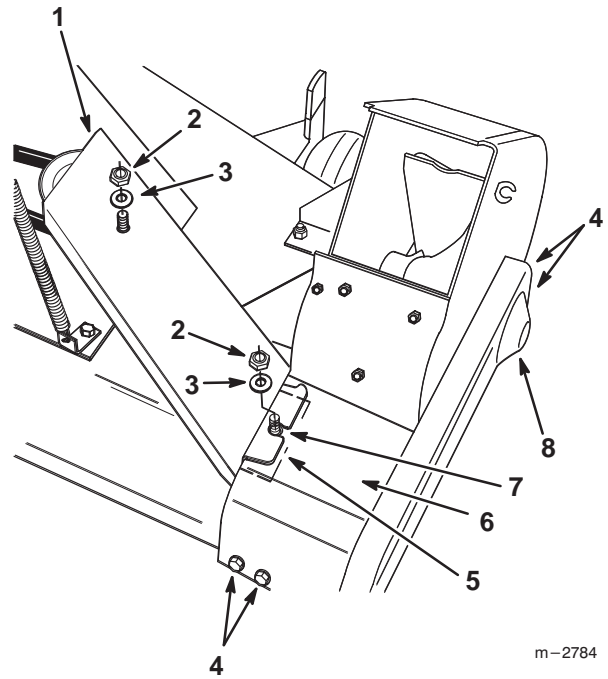


1734

Figure 11

- | | |
|----------------------------|------------------|
| 1. Right-hand Mower Pulley | 3. Idler Pulleys |
| 2. Drive Belt | 4. Blower Pulley |

14. Install the pulley shield to the blower with four (4) 5/16"-18 x 1/2" (13 mm) thread-forming bolts (Fig. 12).
15. Install a 5/16"-18 x 3/4" (19 mm) carriage bolt through the 1" x 2-1/2" (13 mm x 63 mm) flat plate. Install an 11/32" (9 mm) flat washer and locknut onto the 5/16"-18 x 3/4" (19 mm) carriage bolt. Leave the locknut finger-tight (Fig 12).
16. Position the 1" x 2-1/2" (13 mm x 63 mm) flat plate underneath the top shield with the flat washer and locknut above the top shield (Fig 12).
17. Slide the slotted end of the belt cover onto the carriage bolt in the flat plate. Make sure the end of the belt cover is above the top shield and underneath the flat washer (Fig 12).
18. Position the hole in the other end of the belt cover over the stud on the belt shield bracket. Install an 11/32" (9 mm) flat washer and 5/16"-18 locknut onto the stud. Leave the locknut finger-tight (Fig 12).
19. Push the belt cover as far toward the pulley shield as possible, then tighten the locknuts (Fig 12).



m-2784

Figure 12

- | | |
|--|---|
| 1. Belt Cover | 5. 1" x 2-1/2" (13 mm x 63 mm) Flat Plate |
| 2. 5/16"-18 Locknut | 6. Top Shield |
| 3. 11/32" Flat Washer | 7. 5/16"-18 x 3/4" (19 mm) Carriage bolt |
| 4. 5/16"-18 x 1/2" (13 mm) Thread-forming Bolt | 8. Pulley Shield |

Installing the Canister

1. Assemble the support bracket into the bagger mount with a 1/2"-13 x 4" (102 mm) bolt and locknut (Fig. 13).
2. Assemble the heat shield to the bagger mount with four (4) 5/16"-18 x 5/8" (16 mm) bolts, 11/32" (9 mm) flat washers and locknuts (Fig. 13).
3. Install the bagger mount to the tractor frame using a 1/2"-13 x 1" (25 mm) bolt and locknut through the rear hitch, and two (2) 3/8"-16 x 2-1/4" (57 mm) bolts and locknuts at the frame cross member (Fig. 13).
4. Lock the support bracket in the storage or operating position with the hairpin cotter (Fig. 13).

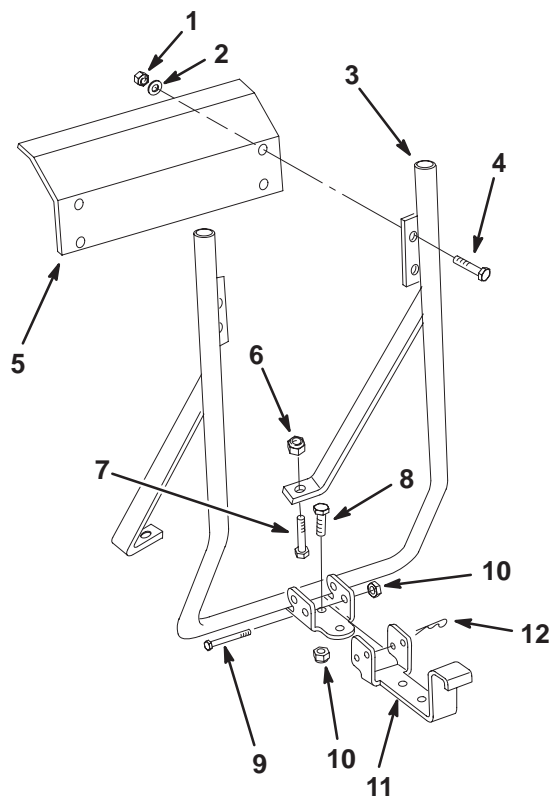


Figure 13

- | | |
|-------------------------------------|--------------------------------------|
| 1. 5/16"-18 Locknut (4) | 7. 3/8"-16 x 2-1/4" (57 mm) Bolt (2) |
| 2. 11/32" (9 mm) Flat Washer (4) | 8. 1/2"-13 x 1" (25 mm) Bolt |
| 3. Bagger Mount | 9. 1/2"-13 x 4" (102 mm) Bolt |
| 4. 5/16"-18 x 5/8" (16 mm) Bolt (4) | 10. 1/2"-13 Locknut |
| 5. Heat Shield | 11. Support Bracket |
| 6. 3/8"-16 Locknut (2) | 12. Hairpin Cotter |

5. Align the canister support over the bagger mount tubes and slide it down onto the bagger mount (Fig. 14).

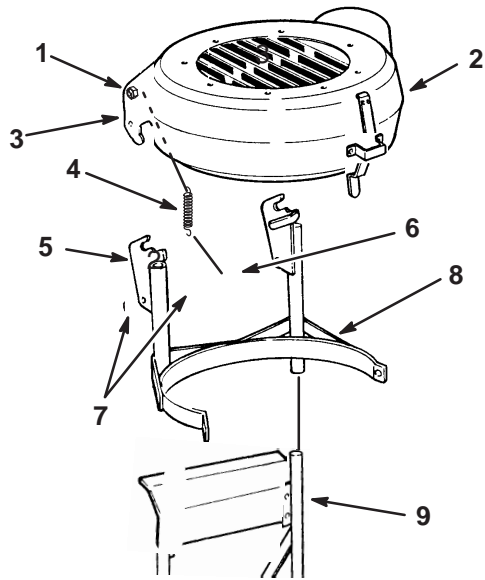


Figure 14

- | | |
|---|---|
| 1. 3/8"-16 x 1-3/4" (44 mm)
Upper Spring Anchor Bolt | 6. 3/8"-16 x 2-1/4" (57 mm)
Lower Spring Anchor Bolt |
| 2. Top Assembly | 7. Locknut |
| 3. Upper Pivot Bracket | 8. Canister Support |
| 4. Spring | 9. Bagger Mount |
| 5. Lower Pivot Bracket | |

6. Thread locknuts partway onto the 3/8"-16 x 1-3/4" (44 mm) and 3/8"-16 x 2-1/4" (57 mm) spring anchor bolts, and onto the 3/8"-16 x 1-1/4" (32 mm) top bracket pivot bolts (Fig. 15).

7. Insert the 3/8"-16 x 1-3/4" (44 mm) upper spring anchor bolts, and the 3/8"-16 x 1-1/4" (32 mm) top bracket pivot bolts into the holes in the upper pivot brackets with the heads facing toward the inside (Fig. 15).

8. Install a second (outer) locknut on each of the four bolts so it is flush with the end of the bolt (Fig. 15).

9. Tighten the inner locknuts on the 3/8"-16 x 1-1/4" (32 mm) top bracket pivot bolts to fasten the bolts to the upper pivot brackets. Leave the inner locknuts on the 3/8"-16 x 1-3/4" (44 mm) upper spring anchor bolts loose (Fig. 15).

10. Insert the 3/8"-16 x 2-1/4" (57 mm) lower spring anchor bolts into the holes in the lower pivot brackets with the heads toward the inside (Fig. 15).

11. Install a second locknut on each of the two 3/8"-16 x 2-1/4" (57 mm) lower spring anchor bolts so it is flush with the end of the bolt. Leave the inner locknuts on the lower spring anchor bolts loose (Fig. 15).

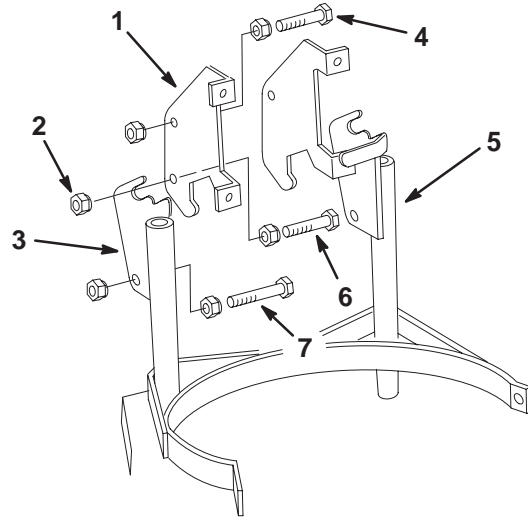


Figure 15

- | | |
|---|---|
| 1. Upper Pivot Bracket (2) | 5. Canister Support |
| 2. Locknut (12) | 6. 3/8"-16 x 1-1/4" (32 mm)
Top Bracket Pivot Bolt (2) |
| 3. Lower Pivot Bracket (2) | 7. 3/8"-16 x 2-1/4" (57 mm)
Lower Spring Anchor Bolt (2) |
| 4. 3/8"-16 x 1-3/4" (44 mm)
Upper Spring Anchor Bolt (2) | |

12. Install the upper pivot brackets and attached top assembly onto the lower pivot brackets on the canister support so the 3/8"-16 x 1-1/4" (32 mm) top bracket pivot bolts fit into the notches in the lower pivot brackets (Figs. 14 and 15).

13. Hook the springs over the bolt heads on the upper and lower spring anchor bolts on the pivot brackets (Figs. 14 and 15).

Note: You may have to thread the inner locknuts farther toward the heads on the spring anchor bolts to get the springs over the bolt heads.

14. When the springs are installed, tighten the inner locknuts on the upper and lower spring anchor bolts (Fig. 15).
15. Raise the top assembly and install the canister into the canister support. Lower the top assembly and latch it in place (Fig. 16).

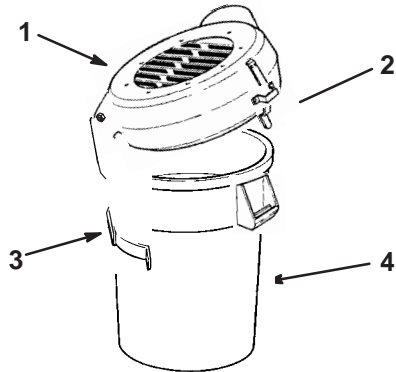


Figure 16

- | | |
|-----------------|---------------------|
| 1. Top Assembly | 3. Canister Support |
| 2. Latch | 4. Canister |

3. Slide the large opening of the seal over the top assembly inlet. Place the seam to the bottom and overlap the seal one inch onto the top assembly inlet (Fig. 18).
4. Position the tie strap in the groove in the top assembly inlet. Pull the tie strap tight to secure the seal to the top assembly, then cut off the loose end of the tie strap (Fig. 18).

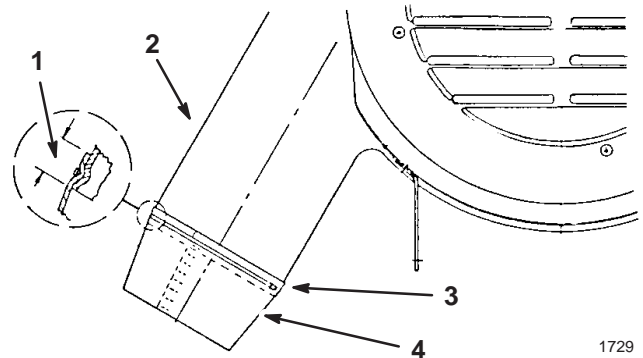


Figure 18

- | | |
|-----------------------|--------------|
| 1. 1" (25 mm) Overlap | 3. Tie Strap |
| 2. Top Assembly Inlet | 4. Seal |

Installing the Discharge Hose

1. Assemble the discharge hose onto the adapter and secure with the clamp (Fig. 17).
2. Slide the adapter onto the blower assembly and secure with the latch handle (Fig. 17).

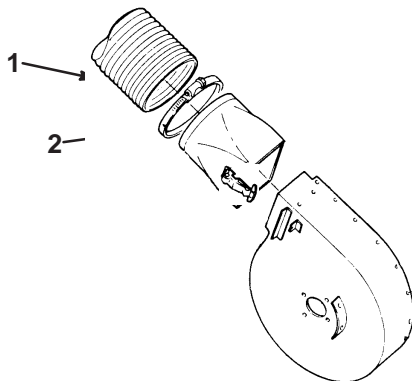


Figure 17

- | | |
|-------------------|-----------------|
| 1. Discharge Hose | 3. Adapter |
| 2. Clamp | 4. Latch Handle |

5. Fold the seal into the top assembly inlet and install the discharge hose. The seal should remain folded inside the top assembly inlet to prevent blowout (Fig. 19).

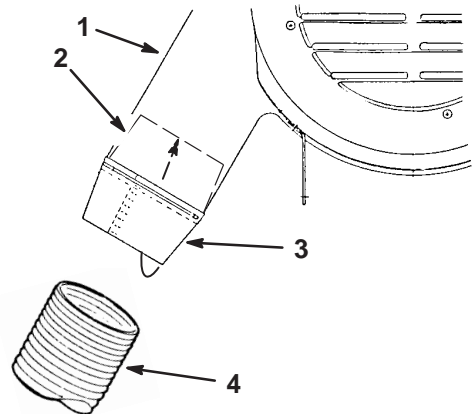


Figure 19

- | | |
|-------------------------------------|--------------------------------------|
| 1. Top Assembly Inlet | 3. Seal (outside top assembly inlet) |
| 2. Seal (inside top assembly inlet) | 4. Discharge Hose |

Operation

Become familiar with all operating instructions and safety suggestions contained in applicable Operator's Manual before attempting to operate this equipment. Never do any maintenance or repairs while the engine is running.



DANGER

POTENTIAL HAZARD

- **When Vacuum Bagger is attached to the tractor, without Front Weight Kit, the tractor may become unstable.**

WHAT CAN HAPPEN

- **Loss of traction and stability may cause loss of tractor control.**

HOW TO AVOID THE HAZARD

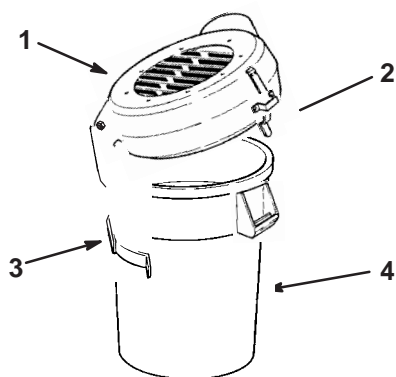
- **NEVER operate tractor, equipped with the Vacuum Bagger, unless the Front Weight Kit (p/n 81127) is installed.**

General Operating Instructions

1. Never operate the tractor with the vacuum bagger attached unless the front weight kit is installed.
2. Never remove the discharge tube while the engine is running. Debris can fly out of the discharge area and injure you.
3. With a few exceptions, operation of the machine with the vacuum bagger is similar to operation without it. Keep in mind that the machine is made longer and wider when this attachment is installed, so be sure to avoid sharp turns in confined places. Also, do not trim with the right side of the mower. Trimming with the right side of the mower can result in damage to the blower assembly.
4. The vacuum attachment is designed to operate efficiently at normal mowing speed. Due to the extra amount of power required to drive the mower and vacuum, it may be necessary to reduce the machine ground speed to keep the engine running smoothly at maximum governed RPM. When mowing uphill, it is recommended that you reduce the machine's ground speed. This will help to avoid a large power drop. When practical, set up a mowing pattern that will permit as much downhill mowing as possible.
5. Avoid stopping when mowing uphill. If it becomes necessary to stop when moving uphill, place the machine back into motion with extreme care. Sudden starts can cause a roll over or personal injury.
6. The suction action generated by the mower and vacuum is capable of picking up grass clippings, leaves, small twigs and other light debris from the lawn and depositing it in the canister. Remove larger twigs, branches, tree limbs, stones and other solid debris from the lawn before mowing to avoid damage to the mower and vacuum.
7. Small amounts of grass clippings blown out of the front of the mower during operation indicates that the canister is full.
8. If the suction action or pick-up should stop during use, disengage the mower and shut off the engine. Check for a full canister, or for a clogged blower assembly, adapter or discharge hose. Always empty the canister when full and after each use.
9. Grass canisters are not storage containers. Never leave fresh grass clippings or other organic material in the canister for any length of time. Under the right conditions, spontaneous combustion, a fire generating process which occurs without an external ignition source, can occur with this type of material and cause severe injury to you.

Emptying the Canister

1. Move the transmission levers into the neutral position, apply the parking brake and disengage the PTO. Stop the engine before leaving the operator position.
2. Open the latch and lift the top assembly to remove or look inside the canister. Remove the canister from the canister support and empty if full (Fig. 16).
3. Reinstall the canister in the canister support, then close and latch the top assembly (Fig. 16).



1811

Figure 20

- | | |
|-----------------|---------------------|
| 1. Top Assembly | 3. Canister Support |
| 2. Latch | 4. Canister |

Maintenance

Service Interval Chart

Service Operation	Each Use	8 Hours	25 Hours	Storage Service	Notes
Blower wear strip – inspect			X		Replace if necessary
Belts – check for wear/cracks				X	Replace if necessary
Blower pulley idler arm – grease		X			
Wash discharge hose and adapter	X				Replace if cracked or broken
Canister – clean	X				
Chipped Surfaces – paint				X	

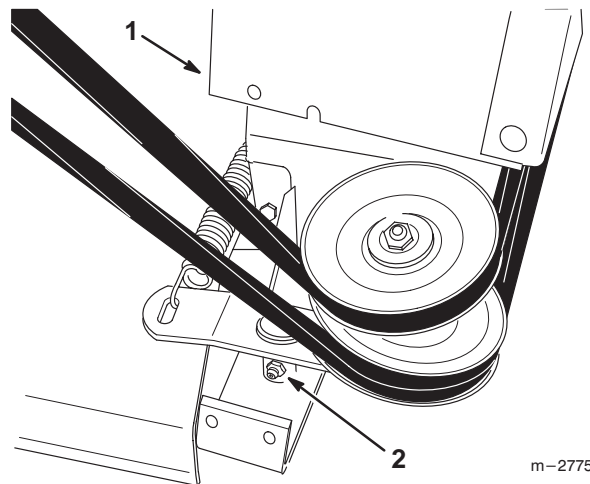
Maintenance and Storage

1. Normal maintenance of the vacuum bagger attachment is minimal. After use, remove the discharge hose and wash the hose and adapter with a garden hose. Use a mild detergent to remove stubborn dirt. Allow the parts to dry thoroughly after washing. Check the underside of the mower and the inside of the canister after use and clean as necessary. Matted grass in these areas can affect performance.
2. After the first 10 hours of operation, inspect all parts of the vacuum and all fasteners to make sure they are in good condition. Pay particular attention to the condition of the discharge hose and adapter. Replace the discharge hose or adapter if cracked or broken. Inspect the blower wear strip every 25 hours of operation. Replace the strip when it is worn thin.

IMPORTANT: Inspect the mower blades and blower impeller frequently, and whenever a blade strikes a foreign object. Replace the mower blades and blower impeller if worn or damaged.

Greasing the Blower Pulley Idler Arm

Lubricate the blower pulley idler arm every 25 operating hours with # 2 multi-purpose lithium grease. Note that the pulley shield must be removed to access the grease fitting (Fig. 21).



m-2775

Figure 21

1. Pulley Shield

2. Idler Arm Grease Fitting

Replacing the Drive Belt

1. Remove the belt covers and note the belt routing (Fig. 22).
2. Remove the worn drive belt (Fig. 22).

Note: This belt is designed specifically for this application.

3. Install the new belt and belt covers as outlined in Installing the Blower on page 7 (Fig. 22).

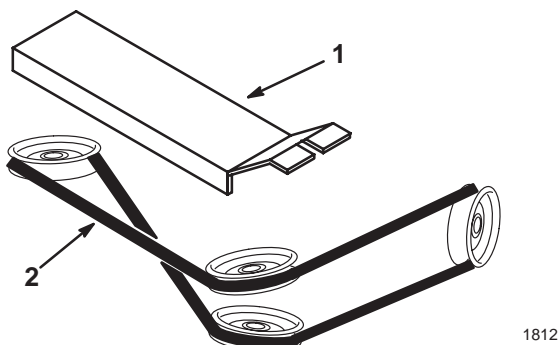


Figure 22

1. Belt Cover

2. Drive Belt

Replacing the Blower Wear Strip

1. Remove the adaptor from the blower.
2. Remove the five (5) locknuts, washers and carriage bolts and pull the wear strip from the blower (Fig. 23).
3. Clean the inside of the blower thoroughly (Fig. 23).
4. Slide the new wear strip inside the blower and install the three (3) lower carriage bolts, washers and locknuts. Make sure you install the carriage bolts with the heads inside the blower (Fig. 23).
5. Push the wear strip tight against the inside of the blower and install the two (2) upper carriage bolts, washers and locknuts. Make sure you install the carriage bolts with the heads inside the blower (Fig. 23).
6. Check that the blower impeller clears the wear strip (Fig. 23).

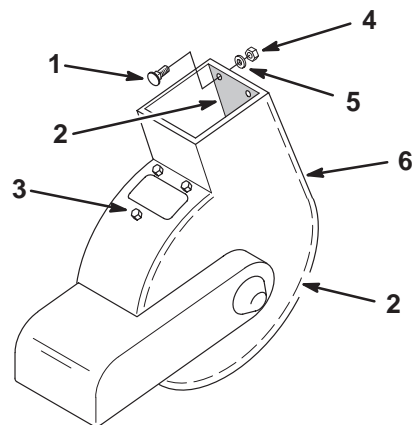


Figure 23

1. Upper Carriage Bolt (2)
2. Wear Strip
3. Lower Carriage Bolt, Washer and Locknut (3)

4. Locknut (typical)
5. Washer (typical)
6. Blower



(Z-Master)
(ProLine Mid-size)

THE TORO TOTAL COVERAGE GUARANTEE

A One Year Limited Warranty
(A Full Two-Year Warranty for Residential Use)

What Is Covered By This Express Warranty?

The Toro Company promises to repair any TORO product used for commercial, institutional, or rental purposes if defective in materials or workmanship for a period of one year from the date of purchase. The cost of parts and labor are included as well as transportation within a 15 mile radius of a TORO ProLine Service Dealer.

What Products Are Covered By This Warranty?

Products covered by this warranty include the Z-Master and ProLine Mid-size products and their cutting decks and accessories.

How About Residential Use?

TORO products used for residential use are covered by a full two-year warranty.

How Do You Get Warranty Service?

Should you feel your TORO product contains a defect in materials or workmanship, contact the dealer who sold you the product or any TORO ProLine Service Dealer. The Yellow Pages of your telephone directory is a good reference source; look under TORO Commercial Service Dealers. The Service Dealer will either arrange service at his/her dealership or recommend another authorized Service Dealer who may be more convenient. You may need proof of purchase (copy of registration card, sales receipt, etc.) for warranty validation.

If for any reason you are dissatisfied with a Service Dealer's analysis of the defect in materials or workmanship or if you need a referral to a TORO ProLine Service Dealer, please feel free to contact us at the following address:

Toro Customer Service Department
8111 Lyndale Avenue South
Bloomington, MN 55420-1196
612-888-8801
800-348-2424

What Must You Do To Keep The Warranty In Effect?

You must maintain your TORO Product by following the maintenance procedures described in the operator's manual. Such routine maintenance, whether performed by a dealer or by you, is at your expense.

What Does This Warranty Not Cover? and

How Does Your State Law Relate To This Warranty?

There is no other express warranty except as described above. This express warranty does not cover:

- Cost of regular maintenance service or parts, such as filters, fuel, lubricants, tune-up parts, blade sharpening, brake and clutch adjustments.
- Any product or part which has been altered or misused or required replacement or repair due to normal wear, accidents, or lack of proper maintenance.
- Repairs necessary due to improper fuel, contaminants in the fuel system, or failure to properly prepare the fuel system prior to any period of non-use over three months.
- Pickup and delivery charges for distances beyond a 15 mile radius from a TORO ProLine Service Dealer.

All repairs covered by this warranty must be performed by a TORO Service Dealer using Toro approved replacement parts.

Repair by a TORO Service Dealer is your sole remedy under this warranty.

The Toro Company is not liable for indirect, incidental or consequential damages in connection with the use of the TORO Products covered by this warranty, including any cost or expense of providing substitute equipment or service during reasonable periods of malfunction or non-use pending completion of repairs under this warranty. Some states do not allow exclusions of incidental or consequential damages, so the above exclusion may not apply to you.

This warranty gives you specific legal rights, and you may also have other rights which vary from state to state.

COUNTRIES OTHER THAN THE UNITED STATES OR CANADA

Customers who have purchased TORO products exported from the United States or Canada should contact their TORO Distributor (Dealer) to obtain guarantee policies for your country, province, or state. If for any reason you are dissatisfied with your Distributor's service or have difficulty obtaining guarantee information, contact the TORO importer. If all other remedies fail, you may contact us at The Toro Company.