



Hand Throttle Kit

Model 07383, 07384, 07384TC, 07386 or 07386TC Workman® HDX
Utility Vehicle

Model No. 07388

Installation Instructions

Safety

⚠ WARNING

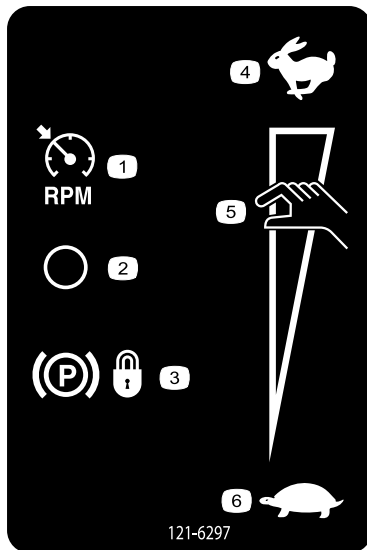
CALIFORNIA Proposition 65 Warning

This product contains a chemical or chemicals known to the State of California to cause cancer, birth defects, or reproductive harm.

Safety and Instructional Decals

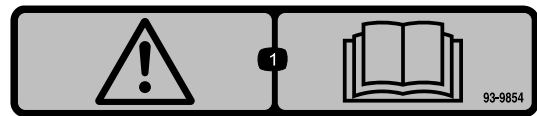


Safety decals and instructions are easily visible to the operator and are located near any area of potential danger. Replace any decal that is damaged or lost.



121-6297

- | | |
|-----------------------|------------------|
| 1. RPM gauge | 4. Fast |
| 2. Off | 5. Hand throttle |
| 3. Parking brake—lock | 6. Slow |



93-9854

1. Warning—read the *Operator's Manual*.



Installation

Loose Parts

Use the chart below to verify that all parts have been shipped.

Procedure	Description	Qty.	Use
1	No parts required	–	Prepare to install the kit
2	No parts required	–	Remove the hood.
3	No parts required	–	Remove the center console panel and seats.
4	No parts required	–	Removing the coolant tank, ROPS shield, and seat shroud.
5	Parking-brake switch Screw, hex-washer head (10–24 x 1/2 inch)	1 2	Brake Switch Installation.
6	Relay Bolt, hex-washer head (1/4 x 5/8 inch)	3 2	Relay Installation.
7	Hand-throttle bracket Flange bolt (5/16 x 1 inch) Flange nut (5/16 inch)	1 4 4	Hand-throttle bracket installation.
8	Hand throttle Bolt (10–24 x 5/8 inch) Nut, serrated (10–32) Mode switch	1 2 2 1	Electronic throttle and mode switch installation.
9	Wiring harness Cable tie	1 5	Install the wiring harness.
10	No parts required	–	Install the seat shroud, ROP shield, and coolant tank.
11	No parts required	–	Install the center console panel and seats.
12	No parts required	–	Connect the battery.
13	No parts required	–	Lower the bed.
14	No parts required	–	Install the hood.
15	No parts required	–	Test the hand throttle kit.

1

Preparing to Install the Kit

No Parts Required

Procedure

1. Move the machine to a level surface and set the parking brake.
2. For machine models with a utility bed, perform the following:
 - A. Raise the bed until the lift cylinders are fully extended; refer to the *Operator's Manual* for the machine.
 - B. Remove the bed support from the storage brackets on back of the ROPS panel ([Figure 1](#)).

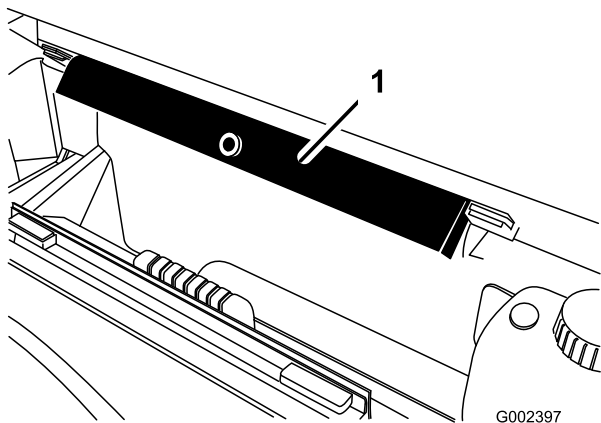


Figure 1

1. Bed Support

- C. Push the bed support onto the cylinder rod, making sure the support end tabs rest on the end of cylinder barrel and on the cylinder rod end ([Figure 2](#)).

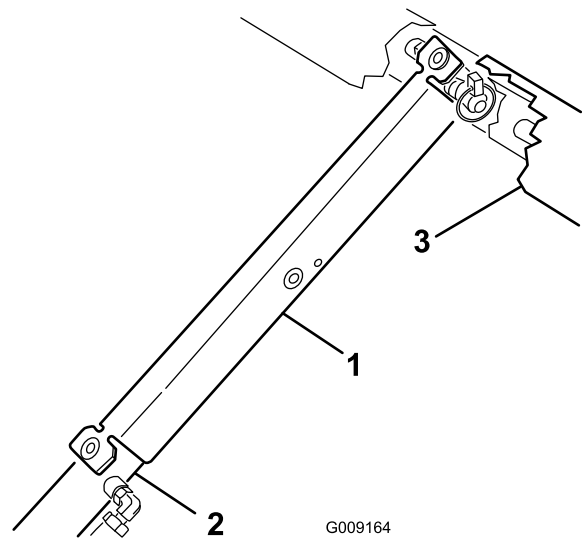


Figure 2

1. Bed support
2. Cylinder barrel
3. Bed

3. Shut off the engine, set the parking brake, and remove the key.
4. Disconnect the battery as follows:
 - A. Squeeze the battery cover to release the tabs from battery base ([Figure 3](#)).

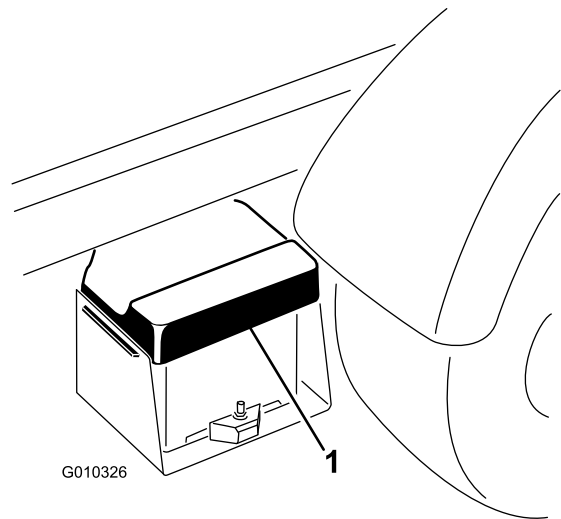


Figure 3

- B. Remove the battery cover from the battery base ([Figure 3](#)).
- C. Remove the terminal of the positive battery cable from the battery post ([Figure 4](#)).

Note: Ensure that the terminal positive battery cable does not touch the battery post.

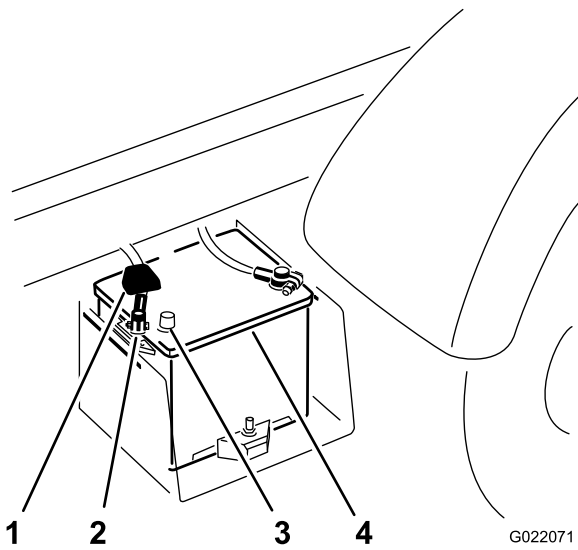


Figure 4

- | | |
|----------------------|-----------------|
| 1. Terminal cover | 3. Battery post |
| 2. Positive terminal | 4. Battery |

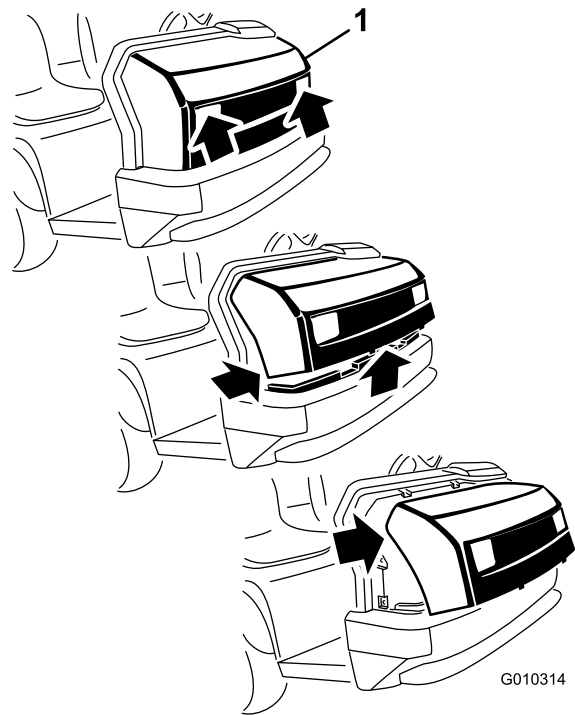


Figure 5

1. Hood
2. Pivot the bottom of the hood upward until the top mounting tabs can be pulled from the frame slots (Figure 5).
3. Pivot the top of hood forward and unplug the wire connectors from the head lights (Figure 5).
4. Remove the hood.

2

Removing the Hood

No Parts Required

Procedure

1. While grasping the hood in the headlight openings, lift up on the hood to release the lower mounting tabs from the slots in the bumper (Figure 5).

3

Removing the Center Console Panel and Seats

No Parts Required

Procedure

1. Remove the bed from the vehicle, if so equipped. Refer to the vehicle *Operator's Manual* for the removal procedure.
2. Unscrew and remove all knobs from console levers and from the gear shift lever (Figure 6).

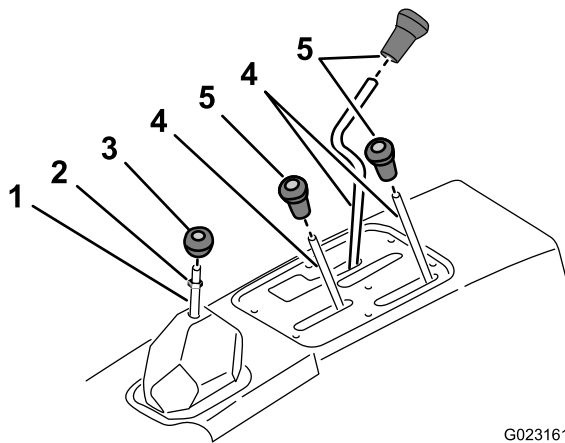


Figure 6

G023161

1. Shifter rod
2. Jam nut
3. Shifter handle
4. Control rod
5. Control knob

3. Remove the jam nut from the gear shift lever (Figure 6).
4. Remove the 6 screws securing the outside edge of the cover plate of the center console to the chassis and remove the cover plate (Figure 7).

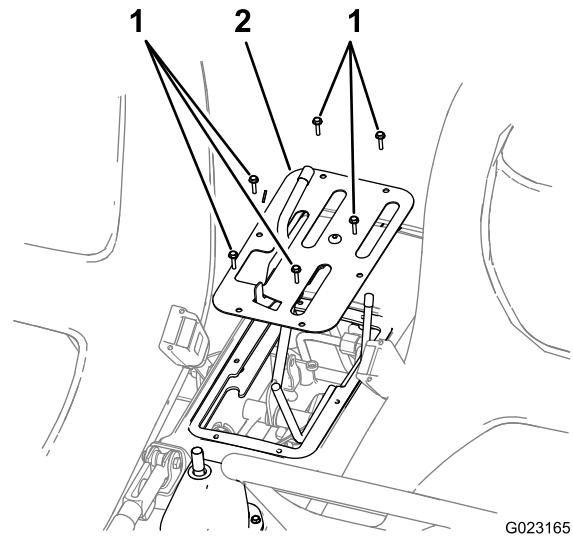


Figure 7

G023165

1. Screw
2. Cover plate

5. Remove the 8 socket-head bolts that secure the seat rails of the seat to the chassis and remove the seats (Figure 8).

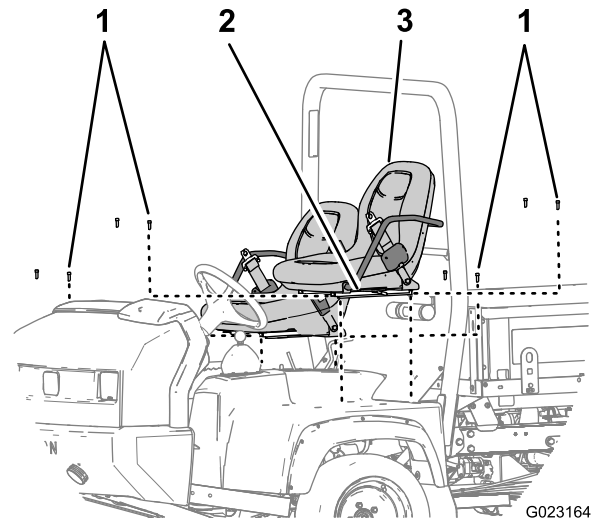


Figure 8

G023164

1. Socket-head bolts
2. Seat rail
3. Seat

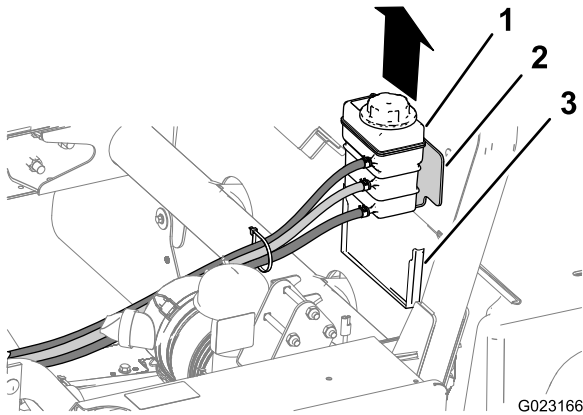
4

Removing the Coolant Tank, ROPS Shield, and Seat Shroud

No Parts Required

Removing the Coolant Tank

1. Lift the coolant tank up and out of the support bracket on the back of the ROPS shield (Figure 9).

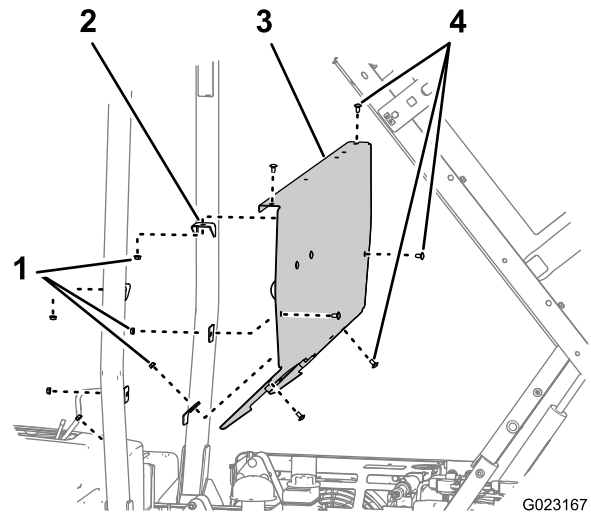


1. Coolant tank
2. Coolant-tank bracket
3. Support bracket

2. Set the coolant tank upright onto the engine/chassis.

Removing the ROPS Panel

1. Remove the 6 carriage bolts and 6 nuts that secure the ROPS panel to the mounting brackets on the ROPS bar (Figure 10).

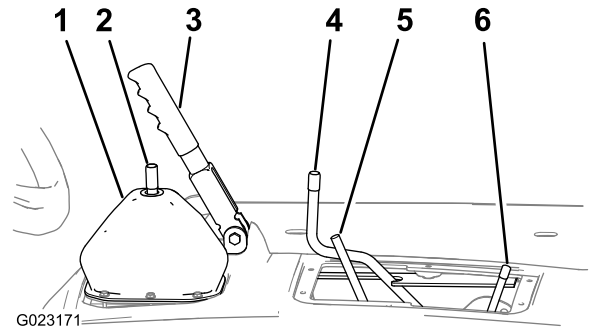


1. Nuts
2. Mounting bracket (ROPS bar)
3. ROPS panel
4. Carriage bolts

2. Remove the ROPS panel from the machine (Figure 10)

Removing the Seat Shroud

1. Ensure that the parking brake is set (Figure 11).



1. Gear selector boot
2. Rod, gear selector
3. Parking brake
4. Rod, differential lock
5. Rod, hydraulic bed lift
6. Rod, high-low range shifter

2. Move the rod for the differential lock forward and to the right (Figure 11).

- Lift the seat shroud up and remove it from the machine (Figure 12).

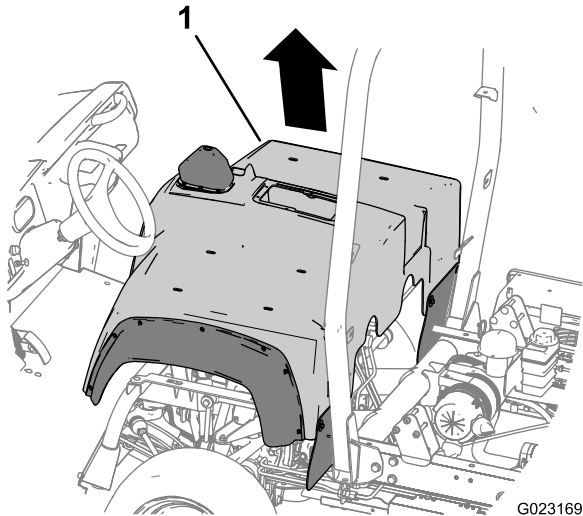
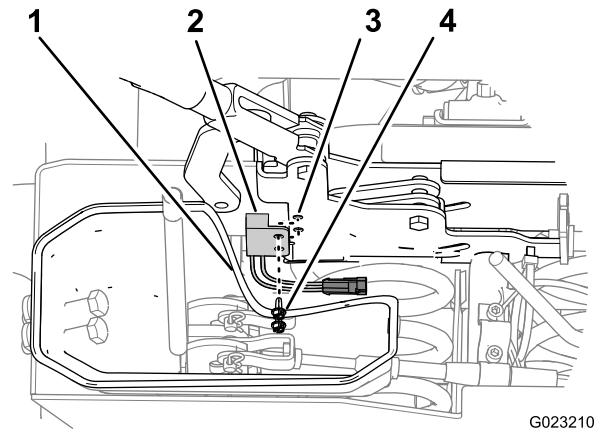


Figure 12

- Seat shroud



G023210

Figure 13

- Lower-dust boot
 - Brake switch
 - Parking brake
 - Hex-washer head screw
- Align the holes in the parking-brake switch with the holes in the left side of the parking brake (Figure 13).
 - Secure the switch to the brake with the 2 hex-washer head screws (Figure 13).

5

Installing the Parking-brake Switch

Parts needed for this procedure:

1	Parking-brake switch
2	Screw, hex-washer head (10–24 x 1/2 inch)

Procedure

- Move the lower-dust boot for the gear selector away from the left side of the parking brake assembly (Figure 13).

6

Installing the Relays

Parts needed for this procedure:

3	Relay
2	Bolt, hex-washer head (1/4 x 5/8 inch)

Procedure

- Standing in front of the machine, measure 106 mm (4-3/8 inch) left from the left face of the center-support bracket and 12.7 mm (1/2 inch) from the bottom of the dash-support tube (Figure 14).

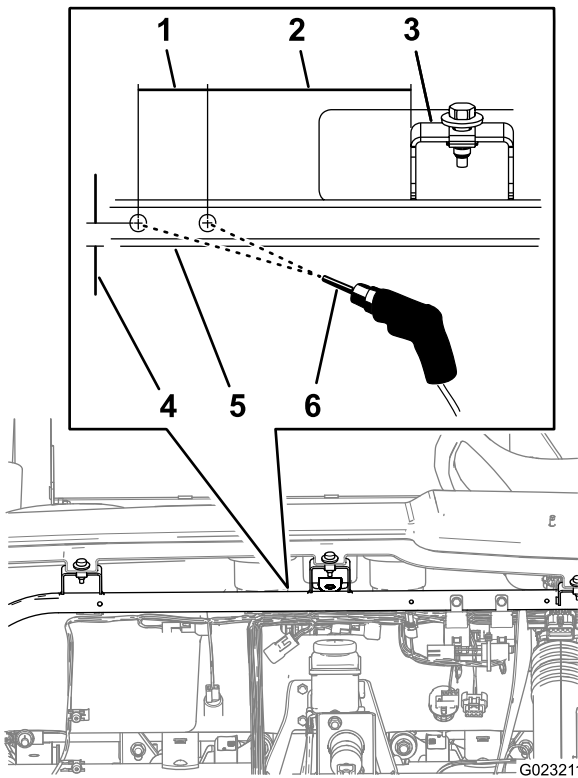


Figure 14

- | | |
|---------------------------|---------------------------------|
| 1. 38.1 mm (1-1/2 inch) | 4. 12.7 mm (1/2 inch) |
| 2. 106 mm (4-3/8 inch) | 5. Dash-support tube |
| 3. Center-support bracket | 6. Drill bit 5.5 mm (7/32 inch) |

2. Mark the location with a center punch.
3. From the center punch mark, measure left 38.1 mm (1-1/2 inch) and 12.7 mm (1/2 inch) from the bottom of the dash-support tube (Figure 14).
4. Mark the location with a center punch.
5. Drill the dash-support tube at the center-punch marks with a 5.5 mm (7/32) drill bit (Figure 14).
6. Secure a relay to the dash-support tube with the bolt (1/4 x 5/8 inch) at hole that you drilled in the right location (Figure 15).

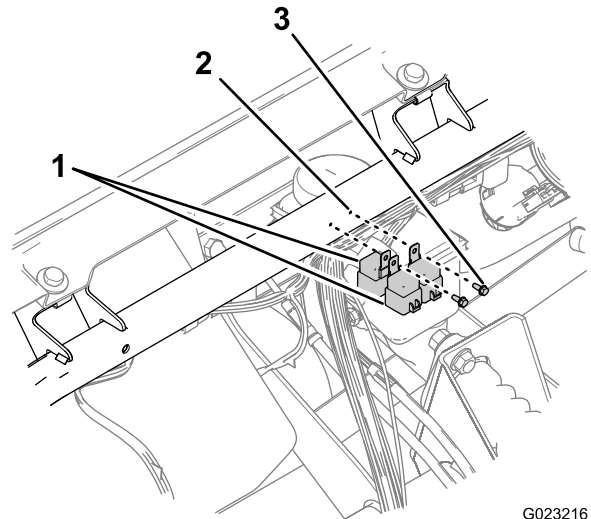


Figure 15

- | | |
|----------------------------------|--------------------------|
| 1. Relay (back-to-back location) | 3. Bolt (1/4 x 5/8 inch) |
| 2. Dash-support tube | |
7. Align 2 relays back-to-back (Figure 15).
 8. Secure the 2 relays to the dash-support tube with the bolt (1/4 x 5/8 inch) at hole that you drilled in the left location (Figure 15).

7

Installing the Hand-throttle Bracket

Parts needed for this procedure:

1	Hand-throttle bracket
4	Flange bolt (5/16 x 1 inch)
4	Flange nut (5/16 inch)

Drilling the Dash Panel

1. Remove the 3 flange bolts and 3 flange nuts that secure the dash panel at the lower center location to the dash support bracket (Figure 16).

Note: Discard the bolts and nuts.

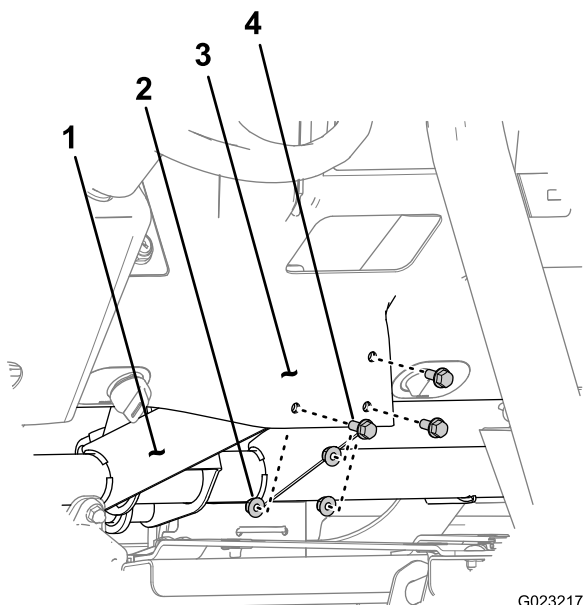


Figure 16

G023217

- | | |
|-----------------|----------------|
| 1. Dash support | 3. Dash panel |
| 2. Flange nut | 4. Flange bolt |

- Align 3 of the holes in the hand-throttle bracket with the 3 holes in the dash panel (Figure 17).

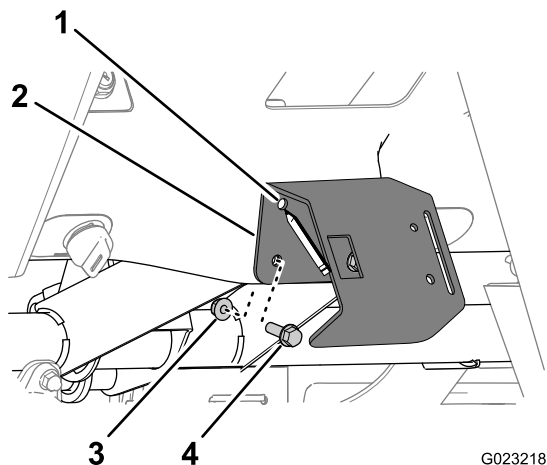


Figure 17

G023218

- | | |
|--------------------------|--------------------------------|
| 1. Bracket hole | 3. Flange nut |
| 2. Hand-throttle bracket | 4. Flange bolt (5/16 x 1 inch) |

- Secure the hand-throttle bracket to the dash panel with the 3 flange bolts (5/16 x 1 inch) and 3 flange nuts hand tight (Figure 17).

- Mark the outline of the upper-right hole in the hand-throttle bracket onto the dash panel (Figure 17).
- Remove the bolts and nuts that secure the hand throttle bracket to the dash panel and remove the bracket.
- Locate the center of the outline that you marked in step 4, and mark the location with a center punch. (Figure 18).

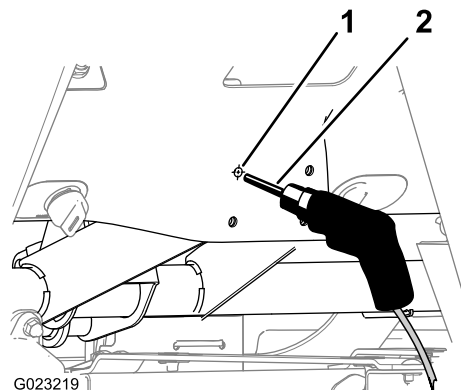


Figure 18

G023219

- | | |
|----------------------|----------------------------------|
| 1. Center punch mark | 2. Drill bit 8.5 mm (11/32 inch) |
|----------------------|----------------------------------|

- Drill a hole in the dash panel with a 8.5 mm (11/32 inch) drill bit at the center punch location (Figure 18).

Note: The dash support has a factory-drilled hole at this location.

Installing the Hand-throttle bracket

- Align the holes in the hand throttle bracket with the holes in the dash panel (Figure 17).
- Secure the hand-throttle bracket to the dash panel with the 4 flange bolts (5/16 x 1 inch) and 4 flange nuts (Figure 17).

8

Installing the Hand Throttle and Mode Switch

Parts needed for this procedure:

1	Hand throttle
2	Bolt (10–24 x 5/8 inch)
2	Nut, serrated (10–32)
1	Mode switch

Installing the Hand Throttle

1. Remove the knob (if it is installed) from the lever of the hand throttle (Figure 19).

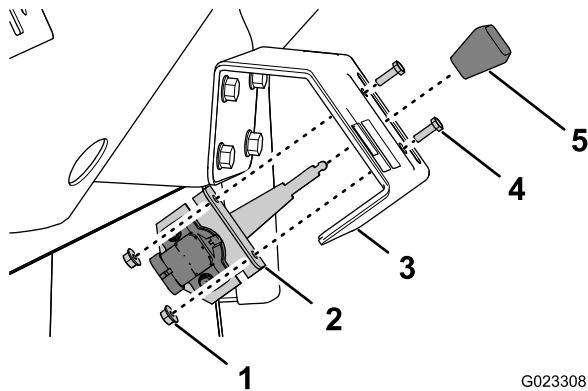


Figure 19

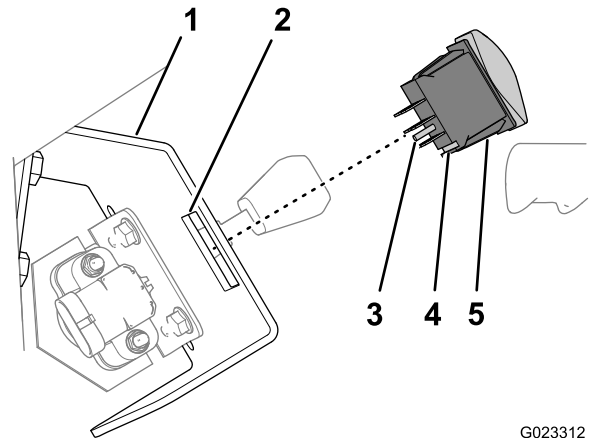
G023308

1. Nut (10–24)
2. Hand-throttle assembly
3. Hand-throttle bracket
4. Bolt (10–24 x 5/8)
5. Knob

2. Align the lever hand throttle to the slot in the hand-throttle bracket, and align the holes in the mounting bracket that is attached to the hand throttle to the hand-throttle bracket (Figure 19).
3. Secure the hand throttle to the hand-throttle bracket with the 2 bolts (10–32 x 5/8) and 2 nuts (Figure 19).

Installing the Mode Switch

1. Align the mode switch to the hand-throttle bracket with the alignment pin at the connectors and the channel in the body of the switch down (Figure 20).



G023312

Figure 20

1. Hand-throttle bracket
2. Rectangular opening
3. Alignment pin
4. Channel
5. Mode switch

2. Snap the switch into the rectangular opening in the hand-throttle bracket (Figure 20).

9

Installing the Wiring Harness

Parts needed for this procedure:

1	Wiring harness
5	Cable tie

Connecting to the Main-harness Interconnections

1. At the front of the machine and adjacent to the fuse block, locate the 8-pin and 8-socket connectors for the front and rear wiring harnesses for the machine (Figure 21).

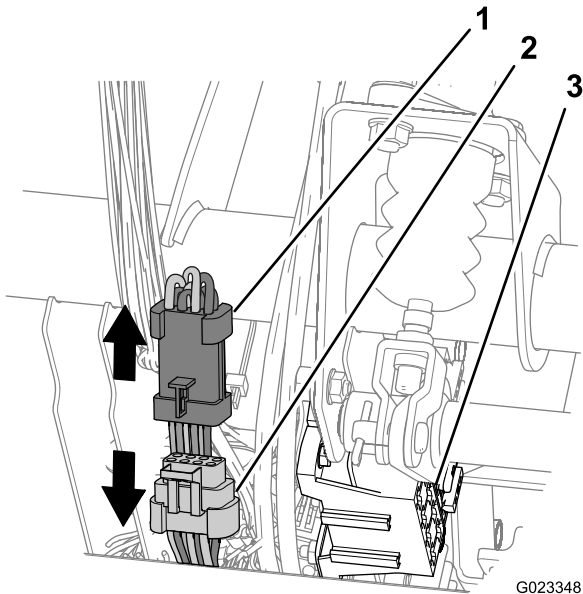


Figure 21

1. 8-pin connector (rear-wiring harness, machine)
2. 8-socket connector (forward-wiring harness, machine)
3. Fuse block

2. Disconnect the 8-pin and 8-socket connectors for the front and rear wiring harnesses (Figure 21).
3. Locate the 8-pin and 8-socket connectors located on the harness of the throttle kit (Figure 22).

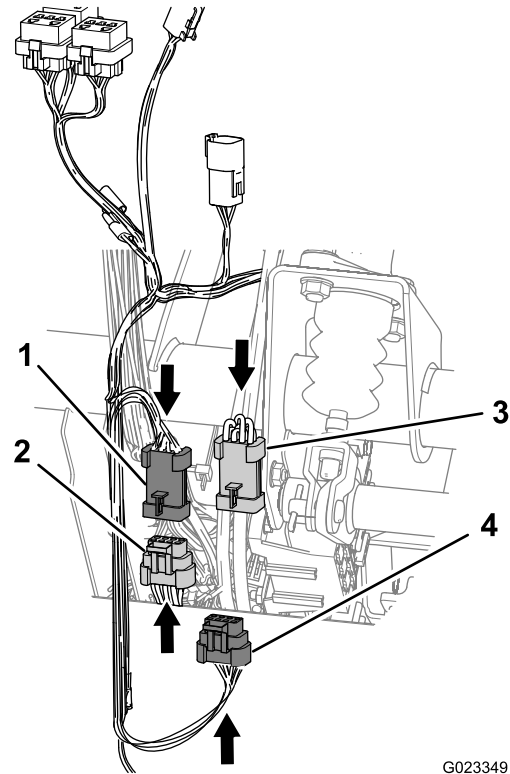


Figure 22

1. 8-pin connector (hand throttle harness)
 2. 8-socket connector (forward-wiring harness, machine)
 3. 8-pin connector (rear-wiring harness, machine)
 4. 8-socket connector (hand throttle harness)
-
4. Connect the 8-pin connector of the throttle kit harness to the 8-socket connector for the front wiring harness of the machine (Figure 22).
 5. Connect the 8-socket connector for the throttle kit harness to the 8-pin connector for the rear wiring harness of the machine (Figure 22).

Routing the Harness and Connecting the Relay Connectors

1. Route the branch of the wiring harness with the 3 connectors with 5 sockets each (Figure 23) up to the relays that you installed in 6 Installing the Relays (page 7).

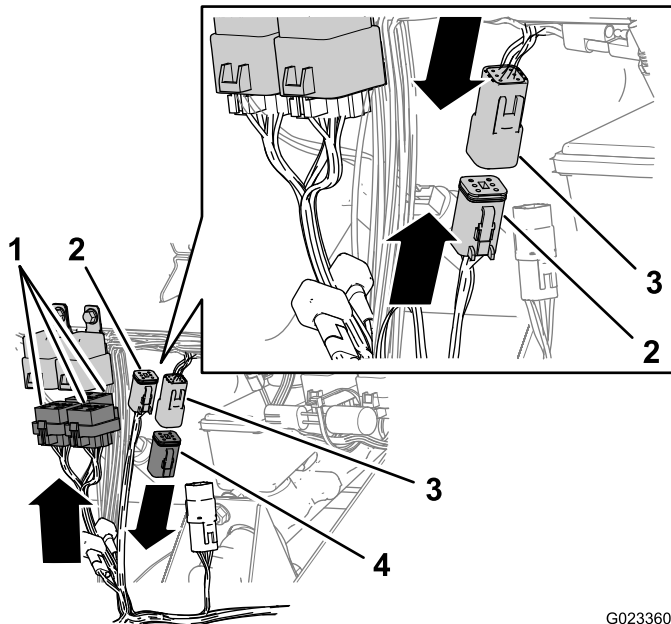


Figure 23

G023360

- | | |
|---|--|
| 1. Relay connectors (hand throttle harness, 5-socket) | 3. Hand throttle pull-up connector (hand-throttle harness, 6-socket) |
| 2. Hand throttle pull-up connector (machine harness, 6-pin) | 4. Resistor |

2. Connect the 5-socket connectors to the relays (Figure 23).

Note: The relationship between relays and the 5-socket connectors is arbitrary.

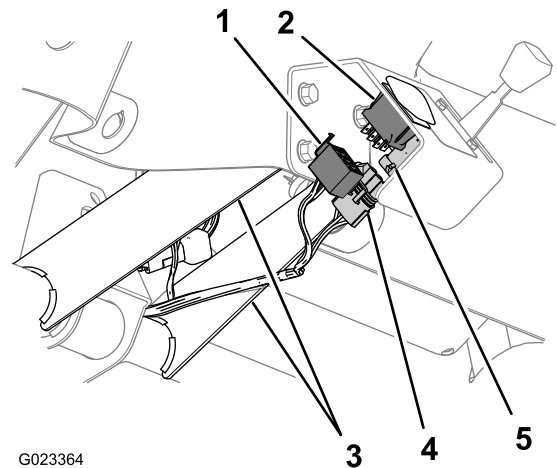
3. Remove the resistor from the 6-pin connector for the hand throttle up circuit (Figure 23).

Note: Retain the resistor and install it in the 6-pin connector if the hand throttle kit is removed from the machine.

4. Connect the 6-pin connector for the hand throttle pull-up circuit of the machine harness to the 6-socket connector of the hand throttle pull-up circuit of the hand-throttle harness (Figure 23).

Routing the Harness and Connecting the Hand Throttle and Mode Switch

1. Route the branch of the throttle kit harness between the vertical flanges of the dash support and back toward the hand throttle and mode switch (Figure 24).



G023364

Figure 24

- | | |
|---|---|
| 1. 8-socket connector (hand throttle harness) | 4. 3-socket connector (hand throttle harness) |
| 2. Mode-switch connector | 5. Hand-throttle connector |
| 3. Dash-support flanges | |

2. Connect the 3-socket connector of the throttle kit harness to the connector of the hand throttle (Figure 24).
3. Connect the 8-socket connector of the throttle kit harness to the connector of the mode switch (Figure 24).

Routing the Wiring Harness

1. Route the branch of the wiring harness of the kit with the 2-pin connector for the parking brake switch down from the main harness interconnections that you connected in steps 4 and 5 of [Connecting to the Main-harness Interconnections](#) (page 11) and along the rear-wiring harness for the machine (Figure 22).
2. Remove the 4 bolts that secure the lower cover to the machine (Figure 25).

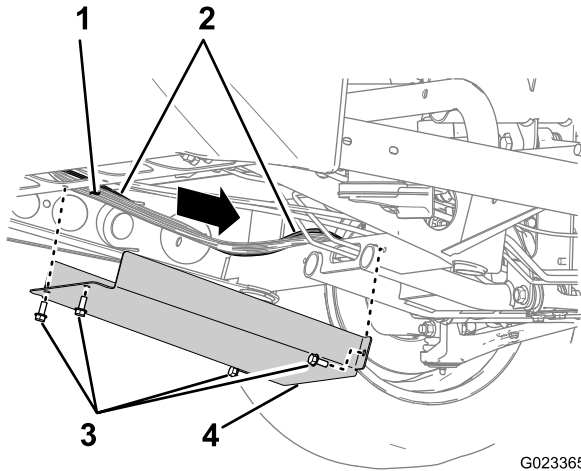


Figure 25

- | | |
|--------------------------------|----------------|
| 1. Rear-main harness (machine) | 3. Bolt |
| 2. Wiring harness (kit) | 4. Lower cover |

3. Route the wiring harness of the kit along the rear-main harness of the machine and rearward over the cross channel of the frame as shown in Figure 25.
4. Install the lower cover with the 4 bolts that you removed in step 2 (Figure 25).

5. Continue routing the wiring harness of the kit along the lower-frame tube and then up behind the upper-control arm and the rear-support channel for the seat (Figure 26, Figure 27, and Figure 28).

Note: The wiring harness of the kit will follow the rear-main harness of the machine.

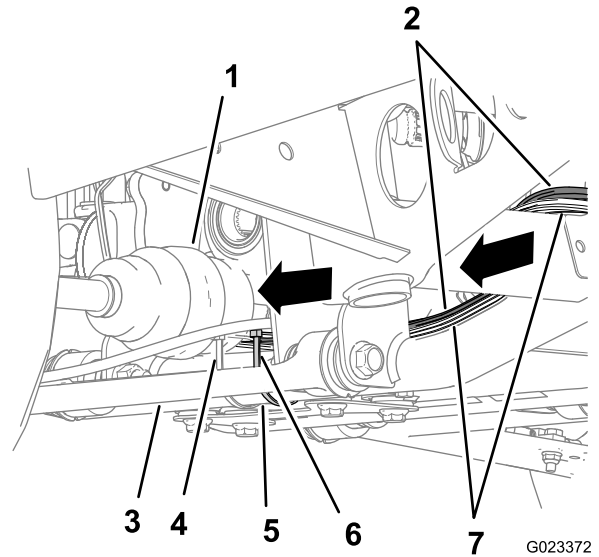


Figure 26

- | | |
|---------------------------------------|--------------------------------|
| 1. Drive shaft (4-wheel drive models) | 5. Lower-frame tube |
| 2. Wiring harness (kit) | 6. Cable tie (kit) |
| 3. Lower-control arm | 7. Rear-main harness (machine) |
| 4. Cable tie (OEM) | |

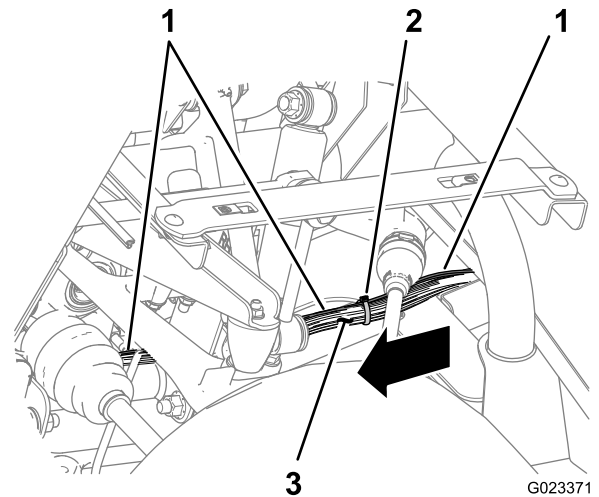


Figure 27

- | | |
|-------------------------|--------------------------------|
| 1. Wiring harness (kit) | 3. Rear-main harness (machine) |
| 2. Cable tie (kit) | |

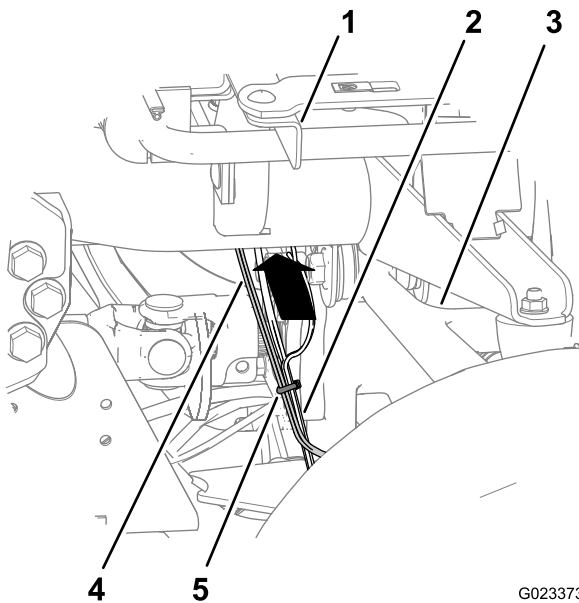


Figure 28

G023373

- | | |
|--------------------------------|-------------------------|
| 1. Seat-support channel (rear) | 4. Wiring harness (kit) |
| 2. Rear-main harness (machine) | 5. Cable tie (kit) |
| 3. Upper-control arm | |

- Secure the wiring harness of the kit to the rear-main harness with cable ties at the 2 locations shown in [Figure 27](#) and [Figure 28](#).
- Secure the wiring harness of the kit to the lower frame tube with a cable tie at the location shown in [Figure 26](#).

Connecting the Harness to the Parking-brake Switch

- Route the branch of the wiring harness for the kit with the 2-pin connector forward to the parking-brake switch ([Figure 29](#)) that you installed in [5 Installing the Parking-brake Switch](#) (page 7).

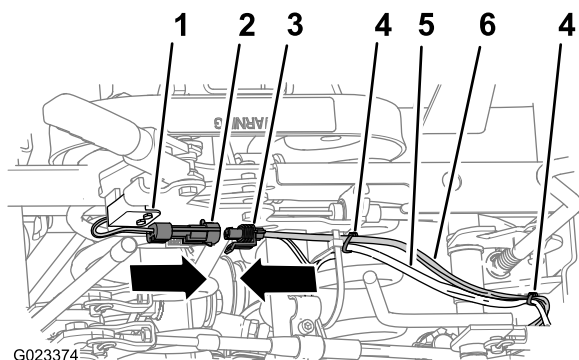


Figure 29

G023374

- | | |
|---|--------------------------------|
| 1. Parking-brake switch | 4. Cable tie (kit) |
| 2. 2-pin connector (parking-brake switch) | 5. Rear-main harness (machine) |
| 3. 2-pin socket connector (wiring harness, kit) | 6. Wiring harness (kit) |

- Connect the 2-pin socket connector of the wiring harness of the kit to the 2-pin connector of the wiring harness of the parking-brake switch ([Figure 29](#)).
- Secure the wiring harness of the kit to the rear-main harness at the 2 location shown in [Figure 29](#).

10

Installing the Seat Shroud, ROP Shield, Coolant Tank

No Parts Required

Installing the Seat Shroud

- Align the opening in the seat shroud for the parking brake with the parking brake handle.
- Align the hole in the gear selector boot with the rod for the gear selector.
- Align the opening in the seat shroud for the rods for the lift bed control, high-low range shifter, and the differential lock.
- Lower the seat shroud down.
- Align the holes in the shroud for the seat mounting with the seat support brackets of the chassis.

Installing the ROPS Shield

- Align the holes in the ROPS shield with the hole in the brackets on the ROPS bar ([Figure 10](#)).
- Secure the ROPS shield to the ROPS bar with the 6 carriage bolts and 6 nuts ([Figure 10](#)) that you removed in step 1 of [Removing the ROPS Panel](#) (page 6).

Installing the Coolant Tank

- Align the left and right flanges of the coolant-tank bracket with the coolant tank support on the ROPS shield ([Figure 9](#)).
- Lower the tank into the support until the tank is firmly seated ([Figure 9](#)).

11

Installing the Center Console Panel and Seats

No Parts Required

Procedure

1. Align the holes in the seat rails with the holes in the shroud for the seat mounting positions (Figure 8).
2. Secure the seats to the chassis with the 8 socket-head bolts (Figure 8) that you removed in step 5 of 3 Removing the Center Console Panel and Seats (page 5).
3. Torque the socket head bolts to 255 to 254 N-m (175 to 225 in-lb).
4. Align the center console panel over the control rods at the center console (Figure 7).
5. Secure the pane with the 6 screws (Figure 6) that you removed in step 4 of 3 Removing the Center Console Panel and Seats (page 5).
6. Thread the jam nut onto the gear shift lever and thread the shift knob on the shift lever (Figure 6).
7. Align the shift pattern on the knob and then tighten the jam nut.
8. Thread the 3 control knobs that you removed in step 2 of 3 Removing the Center Console Panel and Seats (page 5) onto the rods for the hydraulic bed lift, differential lock, and the high-low range shifter (Figure 6).

12

Connecting the Battery

No Parts Required

Procedure

1. Connect the positive battery cable to the battery (Figure 4).
2. Squeeze the battery cover, align the tabs to battery base, and release battery cover (Figure 3).

13

Lowering the Bed bed.

No Parts Required

Procedure

For machine models with a utility bed, perform the following:

1. Pull the bed support from the cylinder rod and remove the support (Figure 2).
2. Insert the bed support into the brackets on the back of the ROPS panel (Figure 1).
3. Lower the bed; refer to the *Operator's Manual*.

14

Installing the Hood

No Parts Required

Procedure

1. Align the bottom of the hood to the top of the bumper (Figure 5).
2. Connect the lights.
3. Insert the top mounting tabs into the frame slots (Figure 5).
4. Insert the lower mounting tabs into the pockets in the bumper (Figure 5).
5. Ensure that the hood is fully engaged in the top, sides, and bottom grooves (Figure 5).

15

Testing the Hand Throttle Kit

No Parts Required

Testing the Accessory Mode

1. Move the machine to a clear level surface.
2. Move the hand throttle to the Slow position (Figure 30).

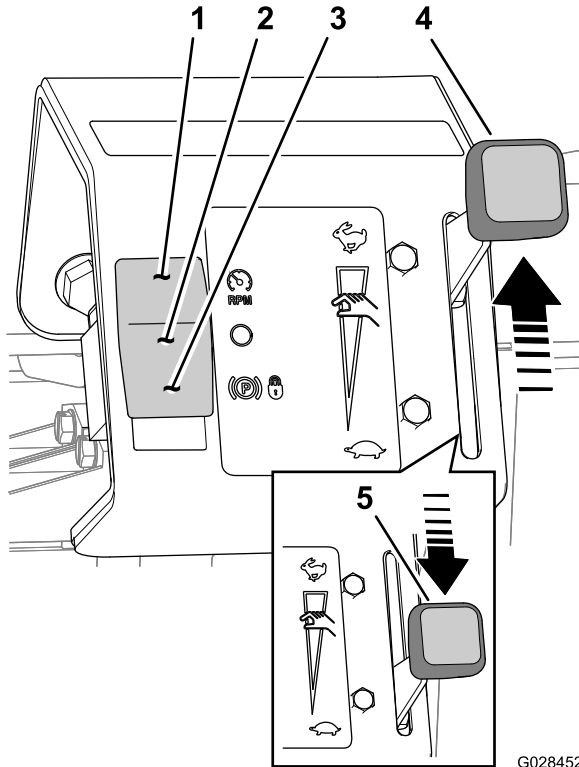


Figure 30

- | | |
|--|----------------------------------|
| 1. Mode switch (limit ground-speed position) | 4. Hand throttle (Fast position) |
| 2. Mode switch (Off position) | 5. Hand throttle (Slow position) |
| 3. Mode switch (throttle-lock position) | |

3. Press the mode switch down to the throttle-lock position (Figure 30).
4. Set the parking brake, place the gear selector in the **neutral** position, and start the machine.
5. Move the hand throttle toward the Fast position (Figure 30).

Note: The engine speed should rise.

6. Move the hand throttle to the Slow position (Figure 30).
 7. Place your foot on the service brake.
 8. Release the parking brake.
 9. Move the hand throttle toward the Fast position (Figure 30).
- Note:** The engine speed should remain at idle.
10. Set the parking brake and shut off the machine.

Testing the Normal Ground-speed Mode

1. Move the hand throttle to the Slow position (Figure 30).
 2. Press the mode switch up to the Off position (Figure 30).
 3. Set the parking brake, place the gear selector in the **neutral** position, and start the machine.
 4. Press on the throttle pedal partially.
- Note:** The engine speed should rise.
5. Release the throttle pedal.
 6. Move the hand throttle toward the Fast position (Figure 30).
- Note:** The engine speed should remain at idle.
7. Shut off the machine.

Testing the Limit Ground-speed Mode

1. Move the hand throttle to the Slow position (Figure 30).
 2. Press the mode switch up to the limit ground-speed position (Figure 30).
 3. Set the parking brake, place the gear selector in the **neutral** position, and start the machine.
 4. Press down the throttle pedal partially.
- Note:** The engine speed should remain at idle.
5. While pressing the throttle pedal, move the hand throttle toward the Fast position (Figure 30).
- Note:** The engine speed should rise.

Product Overview

Controls

Hand Throttle

The hand throttle is used in conjunction with the mode switch to limit the maximum engine speed or set a fixed engine speed (Figure 31).

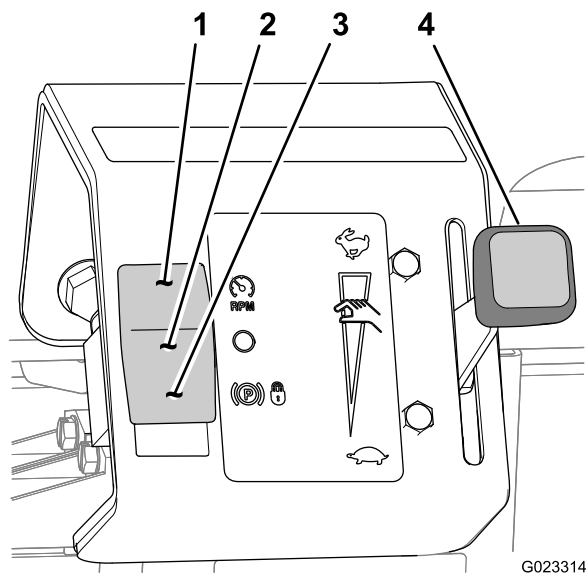


Figure 31

- | | |
|--|---|
| 1. Mode switch (limit ground-speed position) | 3. Mode switch (throttle-lock position) |
| 2. Mode switch (Off position) | 4. Hand throttle |

Mode Switch

The mode switch (Figure 31) is used to control the function of the hand throttle for the following operations:

- **Limit Ground-speed Mode** position—Use this switch position to limit the maximum travel speed of machine while performing machine-based operations.
- **Off** position—Use this switch position for normal control of the machines ground speed.
- **Accessory Mode** position—Use this switch position to control the engine speed when the machine used to power accessory equipment in a stationary position.

Operation

Using the Limit Ground-speed Mode

Setting the maximum engine speed

1. Move the machine to a clear level surface.
2. Move the hand throttle to the Slow position (Figure 31).
3. Press the mode switch up to the limit ground-speed position (Figure 31).
4. Move the gear selector to the gear for the desired ground speed.
5. Fully press down the throttle pedal.
6. Move the hand throttle toward the fast position (Figure 31) until the desired ground speed is reached.
7. Release the throttle pedal.
8. Perform the ground speed-limited task, such as applying topdressing material.

Note: To drive the machine at the maximum ground speed limit that you set, fully press down on the throttle pedal.

Using the Normal Ground-speed Mode

1. Move the machine to a clear level surface.
2. Move the hand throttle to the Slow position (Figure 31).
3. Press the mode switch up to the Off position (Figure 31).
4. Operate the machine as instructed in the *Owner's Manual*.

Using the Accessory Mode

1. Move the machine to the work site.
2. Ensure that the gear selector is in the **Neutral** position and the parking brake is set.
3. Press the mode switch down to the throttle-lock position (Figure 31).
4. Move the hand throttle to the desired engine speed (Figure 31).
5. Perform the accessory based task, such as using the tank mixing or hand sprayer operations.
6. Move the hand throttle to the Slow position (Figure 31).
7. Press the mode switch up to the Off position (Figure 31).

Troubleshooting

Accessory Operation

Problem	Possible Cause	Corrective Action
The engine is not controlled by the hand throttle when in the accessory mode.	<ol style="list-style-type: none">1. The parking brake is not set.2. The parking brake switch is damaged.	<ol style="list-style-type: none">1. Set the parking brake.2. Replace the parking brake switch.
The engine power is too low for the accessory.	<ol style="list-style-type: none">1. The hand throttle is set to a slow position.	<ol style="list-style-type: none">1. Increase the engine power by moving the hand throttle to the desired engine speed position.
The engine power is too high for the accessory.	<ol style="list-style-type: none">1. The hand throttle is set to a fast position.	<ol style="list-style-type: none">1. Decrease the engine power by moving the hand throttle to the desired engine speed position.

Ground Speed Operation

Problem	Possible Cause	Corrective Action
The machine will not accelerate to the desired speed with the throttle pedal.	<ol style="list-style-type: none">1. The hand throttle is set to a lower engine speed limit.2. The mode switch is set to the limit ground speed mode.	<ol style="list-style-type: none">1. Move the hand throttle toward the fast position until the desired ground speed is reached.2. Move the mode switch to the Off position.
The ground speed of the machine is too slow for the speed-limited task.	<ol style="list-style-type: none">1. The hand throttle is set to a slow position.	<ol style="list-style-type: none">1. Moving the hand throttle to a faster position.
The ground speed of the machine is too fast for the speed-limited task.	<ol style="list-style-type: none">1. The hand throttle is set to a fast position.	<ol style="list-style-type: none">1. Moving the hand throttle to a slower position.

Notes:



Count on it.