



Intake Hose Kit

Workman® MDX-D Utility Vehicle

Model No. 131-6689

Installation Instructions

⚠ WARNING

CALIFORNIA Proposition 65 Warning

This product contains a chemical or chemicals known to the State of California to cause cancer, birth defects, or reproductive harm.

Loose Parts

Use the chart below to verify that all parts have been shipped.

Description	Qty.	Use
No parts required	–	Prepare the machine.
No parts required	–	Remove the air-filter assembly.
Air-filter bracket	1	Install the air-filter bracket and the air filter.
Hose clamp	3	
Long hose	1	
Short hose	1	
Flange-head bolt	2	
Carriage bolt	2	
Flange nut	4	



Note: Determine the left and right sides of the machine from the normal operating position.

Preparing the Machine

1. Move the machine to a level surface, set the parking brake, turn the ignition off, and remove the key.

⚠ WARNING

If you leave the key in the ignition switch, someone could accidentally start the machine and seriously injure you or other bystanders.

Remove the key from the ignition switch before you do any maintenance.

2. Lift the lever on either side of the box and lift the box up (Figure 1).

Note: If your machine is equipped with the electric lift kit, use the electric lift controls to lift the bed.

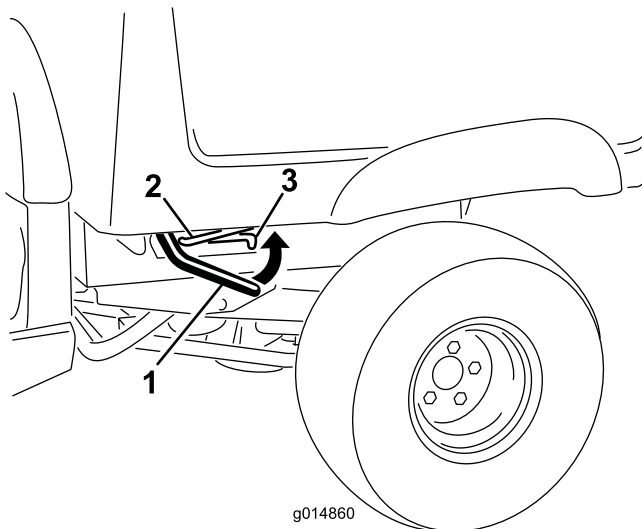


Figure 1

- | | |
|-------------|----------------|
| 1. Lever | 3. Detent slot |
| 2. Prop rod | |

3. Pull the prop rod into the detent slot, securing the box (Figure 1).

⚠ WARNING

A raised box could fall and injure persons that are working beneath it.

- Always use the prop rod to hold the box up before working under the box.
- Remove any load material from the box before raising it.

Removing the Air-Filter Assembly

1. Remove the flange nuts and the carriage bolts securing the air-filter assembly to the rear frame member of the machine.

Note: Discard the flange nuts and the carriage bolts.

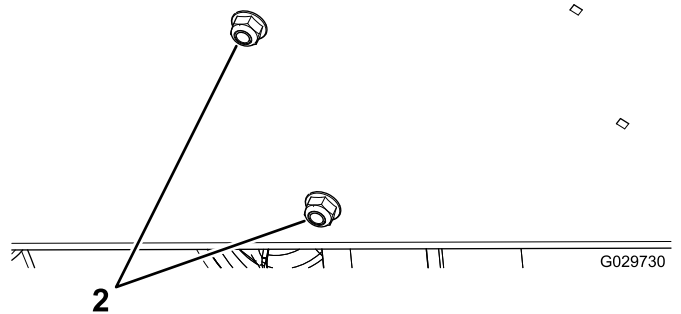
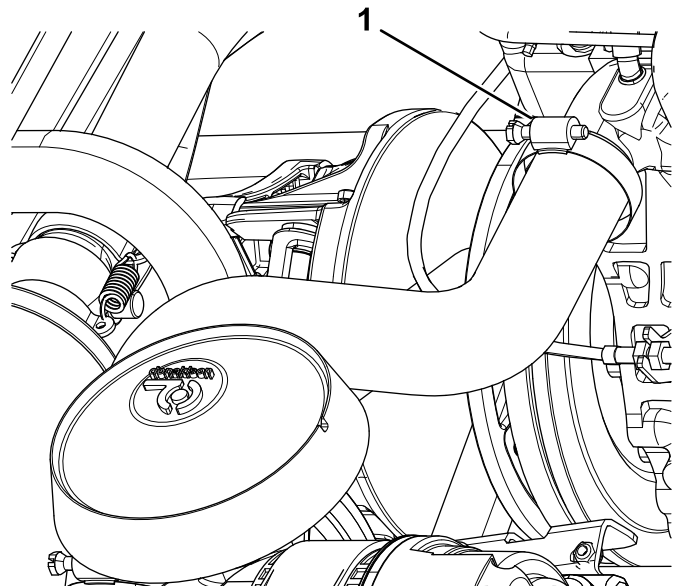


Figure 2

Some components not shown

- | | |
|---------------|----------------|
| 1. Hose clamp | 2. Flange nuts |
|---------------|----------------|
2. Loosen the hose clamp securing the intake hose to the engine.
 3. Remove the air-filter assembly, the intake hose, and the hose clamp.

Note: Retain the air-filter assembly and discard the intake hose and the hose clamp.

Installing the Air-Filter Bracket and the Air Filter

Preparing the Air Filter

Use the existing air filter.

1. Loosen the hose clamp securing the rain cap to the existing air-filter assembly (Figure 3).

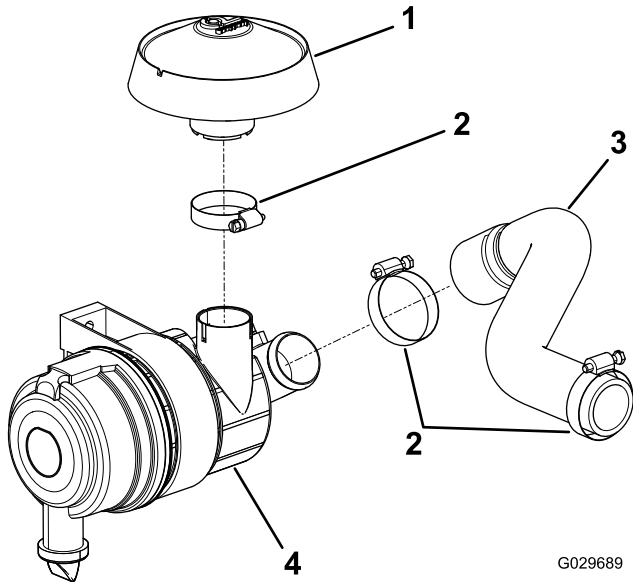


Figure 3

- | | |
|-------------------------|---------------------------------|
| 1. Rain cap (discard) | 3. Hose (discard) |
| 2. Hose clamp (discard) | 4. Air-filter assembly (retain) |

2. Remove the rain cap and the hose clamp.

Note: Discard the rain cap and the hose clamp.

3. Loosen the hose clamp securing the existing hose to the air-filter assembly (Figure 3).
4. Remove the long hose and the hose clamp.

Note: Discard the long hose and the hose clamp.

5. **Loosely** install the new long hose to the 90-degree fitting on the existing air-filter assembly with a hose clamp (Figure 4).

Note: The new orientation of air-filter housing is different than the original design.

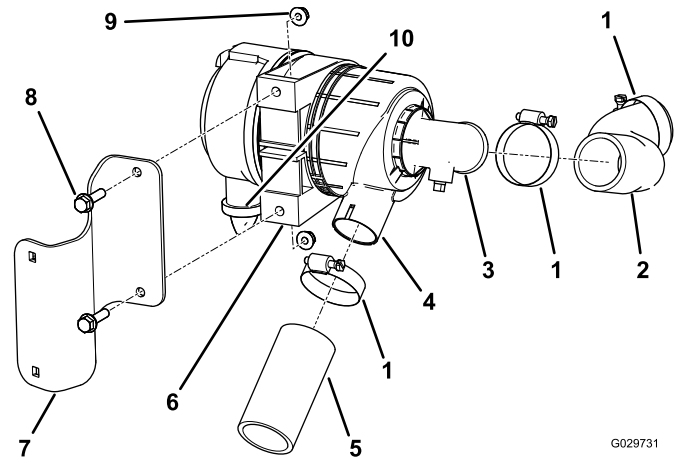


Figure 4

- | | |
|----------------------|-------------------------|
| 1. Hose clamp | 6. Mounting strap |
| 2. Long hose (new) | 7. Bracket |
| 3. 90-degree fitting | 8. Flange-head bolt (2) |
| 4. Port | 9. Flange nut (2) |
| 5. Short hose | 10. Drain valve |

6. Install the short hose to the integrated port on the air-filter housing, and secure it with a hose clamp (Figure 4).
7. Position the mounting strap on the air-filter housing as shown in Figure 4.
8. Install the bracket to the mounting strap on the air-filter housing and secure it with 2 flange-head bolts and 2 flange nuts.
9. Position the drain valve so that it points directly downward.

Installing the Air Filter

1. Install the air-filter assembly to the rear frame member of the machine with the 2 carriage bolts and 2 flange nuts ([Figure 5](#)).

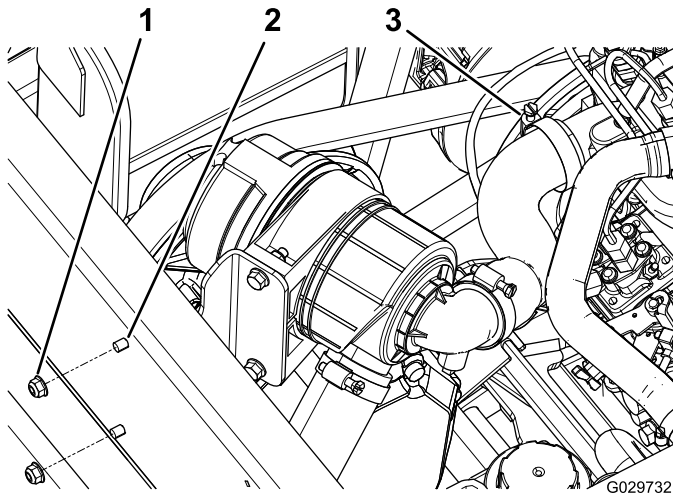


Figure 5

- | | |
|----------------------|---------------|
| 1. Flange nut (2) | 3. Hose clamp |
| 2. Carriage bolt (2) | |
-
2. Loosely install the loose end of the long hose to the engine with a hose clamp ([Figure 5](#)).
 3. Position the long hose and the angle of the port on the air-filter assembly so that there are no kinks in the hose.
 4. Tighten the hose clamps to secure the long hose to the engine and to the air-filter assembly.