



Glow Plug Kit
TR-34D Trench Roller
 Model No. 127-7527

Installation Instructions

▲ WARNING

CALIFORNIA
Proposition 65 Warning

This product contains a chemical or chemicals known to the State of California to cause cancer, birth defects, or reproductive harm.

For ambient air temperatures of 7°C (45°F) and below, the glow plug is recommended for starting the Trench Roller.

Installation

Loose Parts

Use the chart below to verify that all parts have been shipped.

Description	Qty.	Use
Glow plug	1	Install the glow plug kit.
Washers	2	
Nut	1	
Cable ties	15	
Glow-plug wiring harness	1	
Relay switch	1	
Spacer	1	
Wiring harness	1	



Installing the Glow Plug Kit

Preparing the Machine

1. Set the parking brake, open the hood panels, and remove the right-side panel; refer to the *Owner's Manual* of the machine.
2. Disconnect the battery.

Routing the Wiring Harness

1. Remove the wire connector from the rear of the ignition switch.
2. Install the non-insulated terminal of the long wire to pocket 8 of the connector (Figure 1).

Note: Ensure that the wire locks into the connector. If the wire does not lock in place, rotate the wire 180 degrees and install it into the connector.

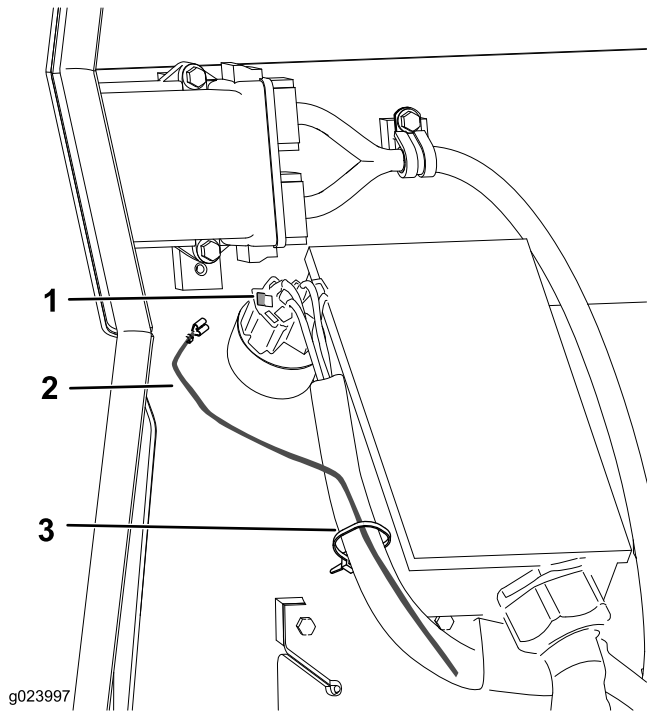


Figure 1

1. Location to install the wire into the connector
2. Wire
3. Cable tie

3. Install the wire connector to the rear of the ignition switch.
4. Route the wire from the connector along the existing wiring harness, and secure the wire to the existing wiring harness using the cable ties (Figure 1 and Figure 2).

Note: Ensure that the wire does not rub against any sharp objects.

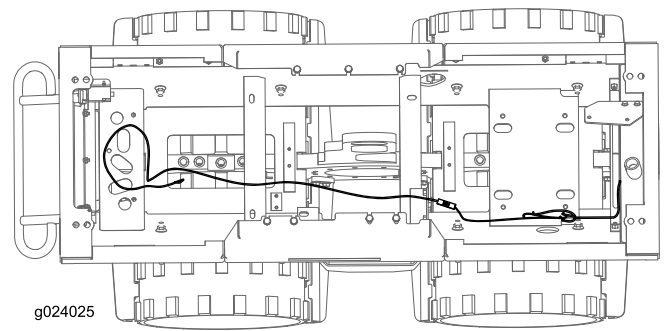


Figure 2

5. Remove the bolt on the right side of the engine (Figure 3).

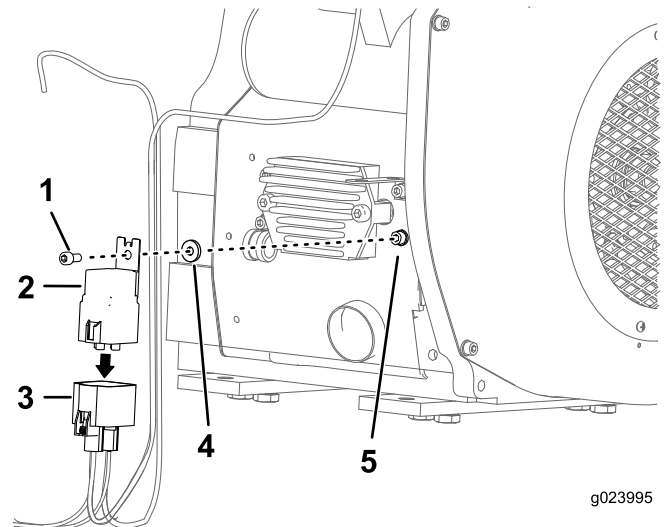


Figure 3

1. Bolt
2. Relay switch
3. Glow-plug wiring harness
4. Spacer
5. Location to install the relay switch

6. Connect the glow-plug wiring harness block to the relay switch and secure the relay switch onto the engine using the bolt previously removed and the spacer, as shown in Figure 3.
7. Remove the nut on the starter solenoid, place the shortest wire onto the bolt, and install the nut (Item 2 in Figure 4).

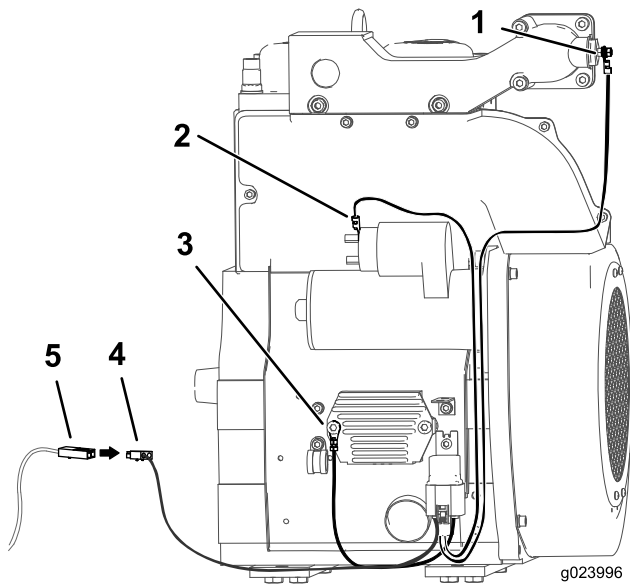


Figure 4

1. Longest wire on the glow-plug wiring harness connected to the glow plug
2. Location to install the medium wire on the glow-plug wiring harness
3. Location to install the shortest wire
4. Connector on the glow-plug wiring harness connected to the connector of the wire that is routed to the rear of the ignition switch
5. Connector on wire being routed from the ignition switch

8. Remove the nut on the voltage regulator, place the medium wire onto the bolt, and install the nut (Item 3 in [Figure 4](#)).
9. Connect the wire with the plastic connector to the wire that is routing up to the rear of the ignition switch (Item 4 in [Figure 4](#)).
10. Route the longest wire from the glow-plug wiring harness the existing wiring harness, and secure the wire to the harness using the cable ties.
11. See [Installing the Glow Plug \(page 3\)](#) to connect the longest wire to the glow plug.

Installing the Glow Plug

1. Remove the plug fitting at the front of the intake manifold of the engine ([Figure 5](#)).

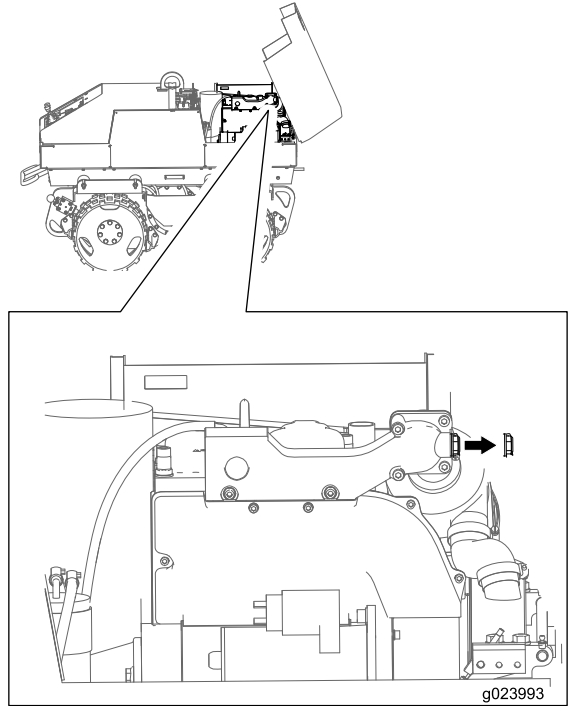


Figure 5

2. Separate the washer from the plug fitting and install it onto the pre-heater element.
3. Install the glow plug, 2 washers, the longest wire coming from the relay wiring harness and the nut as shown in [Figure 6](#).

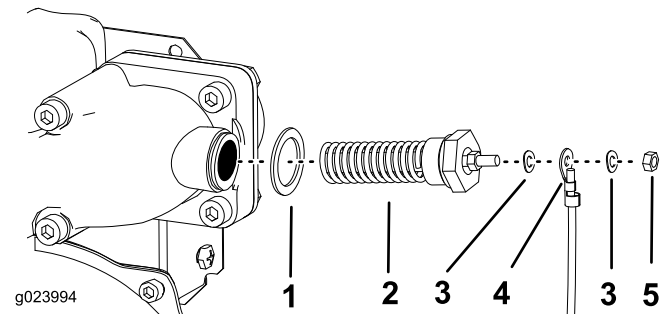


Figure 6

1. Washer (previously attached to the plug fitting)
2. Glow plug
3. Washer
4. Longest wire from the relay wiring harness
5. Nut

4. Connect the battery and close the hood.

Operation

Starting the Machine

1. Turn the key to the Run position and wait for the voltage that is displayed on the screen to drop and raise back up (Figure 7).

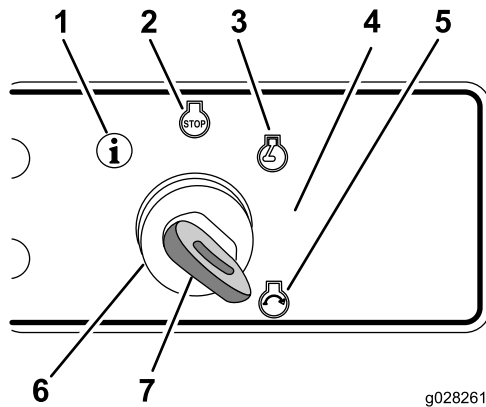


Figure 7

g028261

- | | |
|---------------------------------|---------------|
| 1. Information | 5. Start |
| 2. Off | 6. Key switch |
| 3. Run | 7. Key |
| 4. Glow-plug / preheat location | |

2. Turn and hold the key in between the Run and Start positions for 45 seconds (Figure 7).

Note: The display will shut off after 10 seconds but the preheater will continue to function.

Note: The voltage will drop to 0.5 to 1.0 volts while preheating.

3. Turn the key to the Off position then to the Run position.
4. Turn and hold the key in between the Run and Start positions for 3 to 4 seconds.
5. Turn the key to the Start position (Figure 7).

Note: The engine should crank for more than 1 second. If the engine does not crank, turn the key first to the Off position then to the Run position then to the Start position.

6. Repeat steps 1 through 5 until the engine starts but only hold the key for only 10 seconds on step 2 for consecutive trials.