

TORO®**Rear Pivot Arm Kit****Heavy-Duty Recycler®/Rear Bagger Lawn Mower**

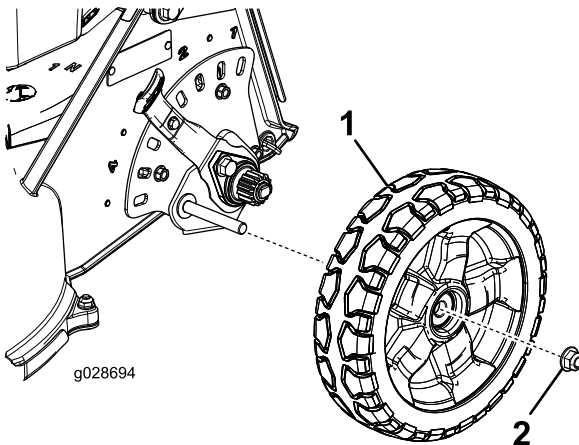
Model No. 131-5305

Installation Instructions**⚠ WARNING****CALIFORNIA
Proposition 65 Warning**

This product contains a chemical or chemicals known to the State of California to cause cancer, birth defects, or reproductive harm.

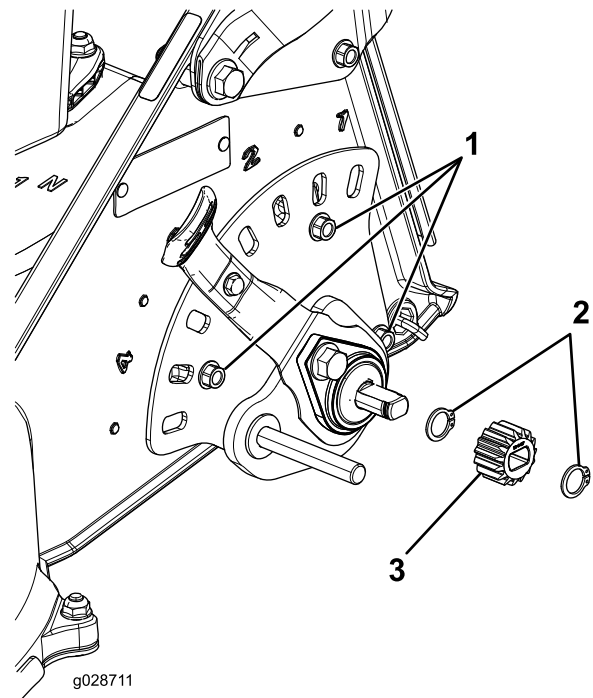
Important: Save the parts that you remove from the machine except those that you are instructed to discard.

1. Remove the flange nut and the wheel from the machine (Figure 1).

**Figure 1**

1. Wheel
2. Flange nut

2. Remove the retaining rings and the pinion gear from the machine (Figure 2).

**Figure 2**

1. Bolts (1/4 x 3/4 inch)
 2. Pinion gear
 3. Retaining rings
3. Remove the 3 bolts (1/4 x 3/4 inch) that secure the height-of-cut assembly to the machine (Figure 2).
 4. Remove the height-of-cut assembly from the machine.



5. Remove the retainer cover, retaining ring, and washer from the height-of-cut plate (Figure 3).

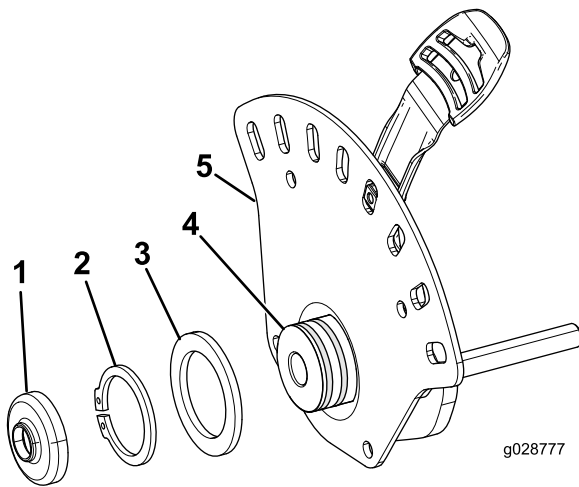


Figure 3

- | | |
|-------------------|------------------------|
| 1. Retainer cover | 4. End of retainer |
| 2. Retaining ring | 5. Height-of-cut plate |
| 3. Washer | |

6. Disassemble the remaining parts of the assembly (Figure 4).

Note: Discard the height-of-cut plate, rear pivot plate, bolt (5/16 x 3/4 inch), and Belleville washer.

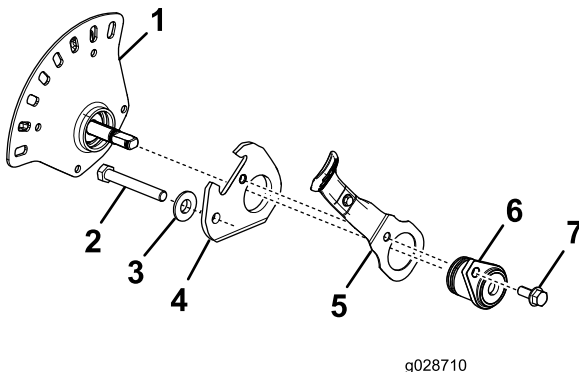


Figure 4

- | | |
|----------------------------------|-----------------------------------|
| 1. Height-of-cut plate (discard) | 5. Spring arm |
| 2. Bolt (3/8 x 2-3/4 inches) | 6. Retainer |
| 3. Belleville washer (discard) | 7. Bolt—5/16 x 3/4 inch (discard) |
| 4. Rear pivot arm (discard) | |

7. Assemble the parts for the height-of-cut assembly (Figure 5) using the height-of-cut plate, the rear pivot plate, and the bolt (5/16 x 3/4 inch) from the kit.

Note: Torque the bolt (5/16 x 3/4 inch) to 20 to 23 N-m (180 to 200 in-lb).

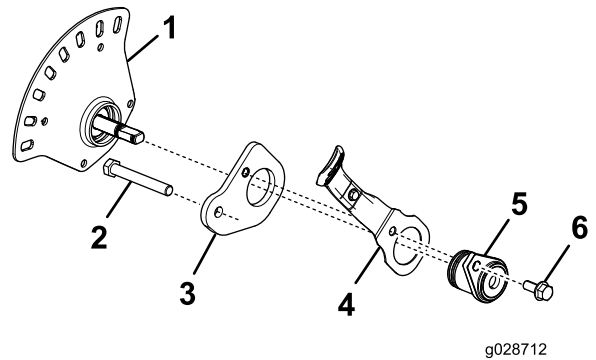


Figure 5

- | | |
|---------------------------------------|--|
| 1. Height-of-cut plate (from the kit) | 4. Spring arm |
| 2. Bolt (3/8 x 2-3/4 inches) | 5. Retainer |
| 3. Rear pivot arm (from the kit) | 6. Bolt—5/16 x 3/4 inch (from the kit) |

8. Install the washer, retaining ring, and retainer cover on the height-of-cut plate (Figure 3).
9. Install the height-of-cut assembly onto the machine with the 3 bolts (1/4 x 3/4 inch) as shown in Figure 6.

Note: Torque the bolts to 11 to 14 N-m (100 to 120 in-lb).

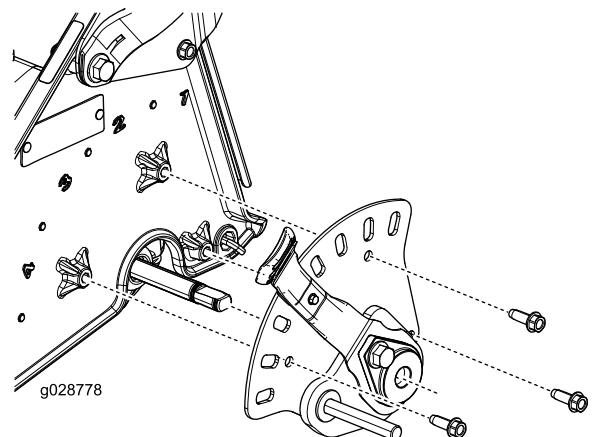


Figure 6

10. Install the pinion gear with the retaining rings (Figure 2).
11. Secure the wheel to the machine with the flange nut (Figure 1).

Note: Torque the flange nut to 28 to 45 N-m (250 to 400 in-lb).

12. Repeat this procedure for the other rear wheel assembly.