



# CE Bagger Compliance Kit

## 48in Z Master® 2000 Series Mower

Model No. 127-0339

Form No. 3394-391 Rev A

### Installation Instructions

**Note:** Determine the left and right sides of the machine from the normal operating position.

**Note:** To create a CE bagger, install this kit on the Blower and Drive Kit model 78571 and with the E-Z Vac™ Twin Soft Bagger Kit model 78569.

## Installation

### Loose Parts

Use the chart below to verify that all parts have been shipped.

Procedure	Description	Qty.	Use
<b>1</b>	No parts required	–	Prepare the mower.
<b>2</b>	No parts required	–	Remove the discharge chute.
<b>3</b>	No parts required	–	Remove the belt cover and bracket.
<b>4</b>	No parts required	–	Remove the blower kit parts.
<b>5</b>	Pulley guard Belt-cover bracket Carriage bolt (1/4 x 1) Hex-head bolt (3/8 x 1 inch) Clip nut	1 1 1 1 1	Install the deck bracket.
<b>6</b>	Shaft guard Forward guard Tensioner guard	1 1 1	Install the upper guards.
<b>7</b>	Lower guard Hex-head bolt (1/4 x 3/4 inch) Washer (1/4 x 5/8) Locknut (1/4 inch)	1 2 2 2	Install the lower guard.
<b>8</b>	Hex-head bolt (1/4 x 3/4 inch) Washer (5/16 x 3/4 inch) Washer (1/4 x 1/2 inch) Retainer	1 1 1 1	Install the belt cover.
<b>9</b>	Support rod	1	Install the support rod.



# 1

## Preparing the Mower

### No Parts Required

#### Procedure

1. Park the machine on a level surface, set the parking brake, and remove the ignition key.
2. Thoroughly clean mower deck. All debris must be removed to ensure the kit will fit properly.
3. Repair all bent or damaged areas and replace any missing parts.
4. Lower the mower deck to the lowest height-of-cut position; refer to the mower *Operator's Manual*.

# 2

## Remove the Discharge Chute

### No Parts Required

#### Removing the Discharge Chute

**Important:** Install the side-discharge chute when you remove the bagger and blower.

1. Remove the locknut, bolt, spacer, and spring that secure the side-discharge chute to the mower deck ([Figure 1](#)).

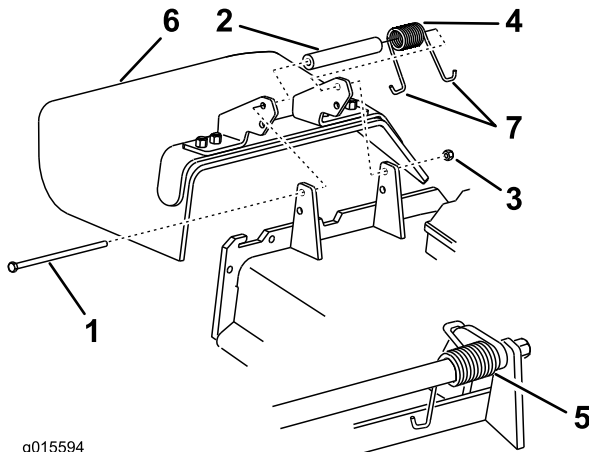


Figure 1

- |            |                         |
|------------|-------------------------|
| 1. Bolt    | 5. Spring installed     |
| 2. Spacer  | 6. Side-discharge chute |
| 3. Locknut | 7. J-hook end of spring |
| 4. Spring  |                         |

2. Remove the side discharge chute from the mower deck ([Figure 1](#)).

**Note:** Retain the chute and hardware for installation when operating the mower with the blower accessory removed.

# 3

## Removing the Belt Cover and Bracket

### No Parts Required

#### Removing the Belt Cover

Remove the belt cover as follows:

1. Loosen and remove the bottom bolt of the mower-deck curtain to release the curtain ([Figure 2](#)). Retain the bolt.

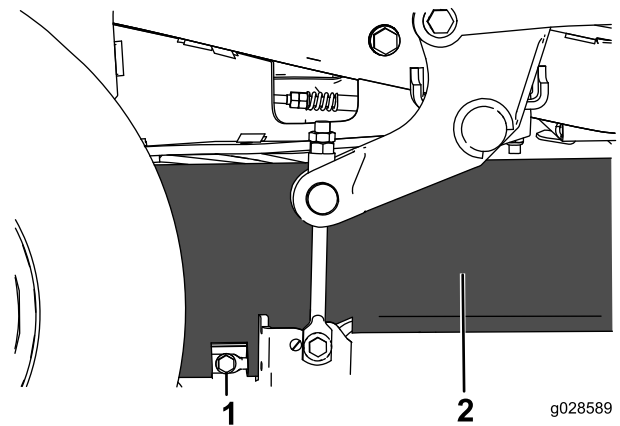
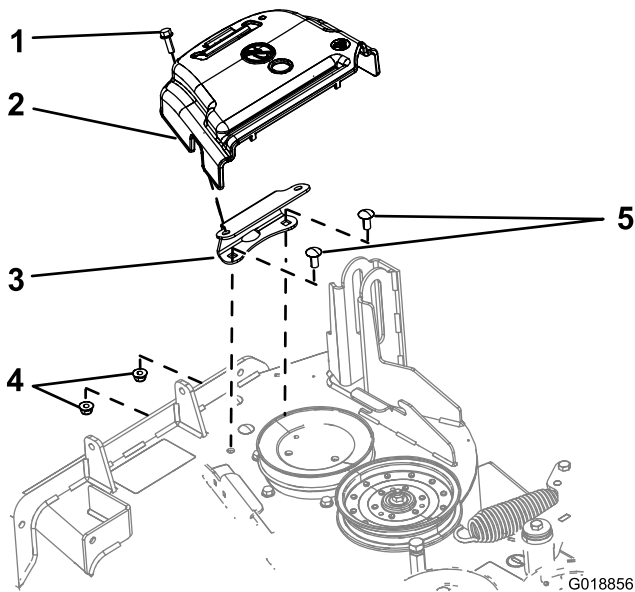


Figure 2

- |         |            |
|---------|------------|
| 1. Bolt | 2. Curtain |
|---------|------------|

2. Rotate the bolt that secures the belt cover to the counterclockwise to loosen it ([Figure 3](#)).



**Figure 3**

- |                                      |                                   |
|--------------------------------------|-----------------------------------|
| 1. Bolt (retained to the belt cover) | 4. Flange nut (3/8 inch)          |
| 2. Belt cover                        | 5. Carriage bolt (3/8 x 7/8 inch) |
| 3. Cover-mounting bracket            |                                   |

3. Remove the belt cover and bolt from the mounting bracket (Figure 3).

**Note:** Retain the belt cover and bolt for installation when operating the mower with the blower accessory removed.

## Removing the Cover Mounting Bracket

1. Remove the 2 bolts and 2 flange nuts that secure the cover mounting bracket to the deck (Figure 3).

**Note:** Retain a flange nut for installation of the kit; refer to [Installing the Pulley Guard and Belt-Cover Bracket](#) (page 5).

2. Remove the bracket.

**Note:** Retain the cover mounting bracket, bolts, and flange nut for installation when operating the mower with the blower accessory removed.

# 4

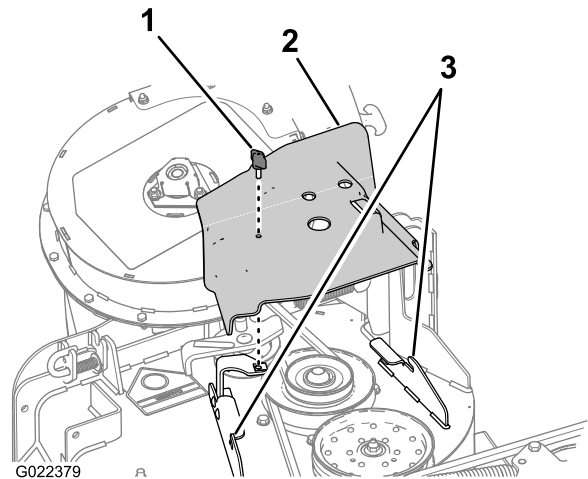
## Removing the Blower Kit Parts (If Installed)

### No Parts Required

## Removing the Belt Cover for the Blower

If the blower kit is installed on the machine, remove the belt cover installed from blower and drive kit as follows:

1. Remove the thumbscrew that secures the belt cover (Figure 4).



**Figure 4**

- |               |                      |
|---------------|----------------------|
| 1. Thumbscrew | 3. Deck flange hooks |
| 2. Belt cover |                      |

2. Move the cover outward until the edge of the cover clears the hooks in the deck flanges (Figure 4).
3. Remove the cover from the deck.

**Note:** Discard the thumbscrew.

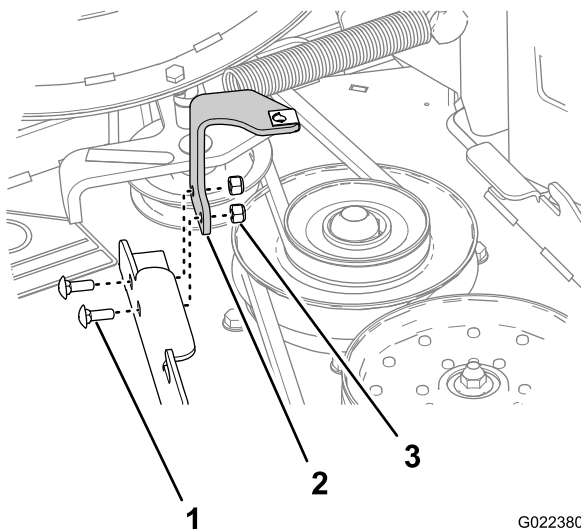
**Note:** Retain the belt cover for installation with the kit; refer to [Installing the Belt Cover](#) (page 9).

## Removing the Belt Cover Bracket

If the blower kit is installed on the machine, remove the belt cover bracket installed from the blower and drive kit as follows:

1. Remove the 2 carriage bolts (1/4 x 3/4 inch) and 2 locknuts (1/4 inch) that secure the belt cover bracket to the forward flange of the mower deck (Figure 3).

**Note:** Retain 1 carriage bolt and 2 lock nuts for installation with the kit; refer to [Installing the Pulley Guard and Belt-Cover Bracket](#) (page 5).



**Figure 5**

G022380

1. Carriage bolt (1/4 x 3/4 inch)
2. Belt cover bracket
3. Locknut

2. Remove the belt cover bracket from the mower deck (Figure 3).

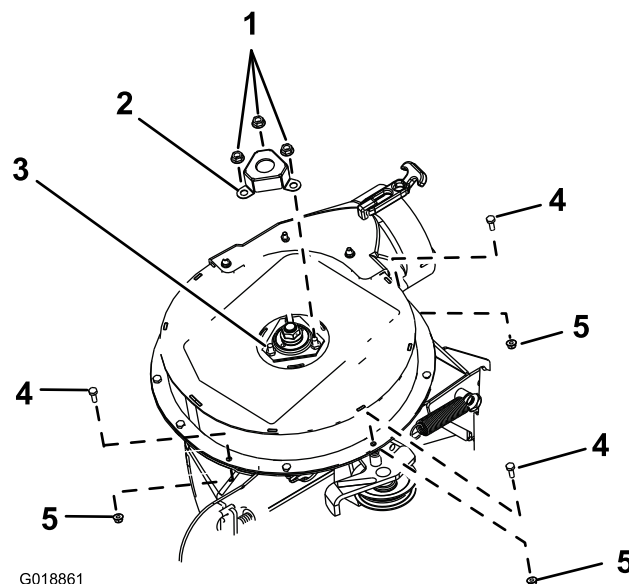
**Note:** Discard the belt cover bracket.

## Removing the Shaft Cover and Hardware

1. Remove the 3 serrated nuts that secure the shaft cover to the blower assembly (Figure 6).

**Note:** Do not loosen the bolts and nuts that secure the upper-bearing housing that are beneath the shaft cover.

**Note:** Retain the serrated nuts for the shaft guard installation; refer to [Installing the Shaft Guard](#) (page 6).



G018861

**Figure 6**

Blower Shaft Cover and Hardware Removal

1. Serrated nut (5/16 inch)
2. Shaft cover
3. Bolt and nut (upper bearing housing)
4. Hex-head bolt (1/4 x 3/4 inch)
5. Locknut (1/4 inch)

2. Remove and discard the shaft cover (Figure 6).
3. Remove the 3 hex-head bolts (1/4 x 3/4 inch) and 3 locknuts (1/4 inch) from the blower housing as shown in Figure 6.

**Note:** Retain the bolts and nuts for the guard installation; refer to [Installing the Upper Guards](#) (page 6).

# 5

## Installing the Pulley Guard and Belt-cover Bracket

### Parts needed for this procedure:

1	Pulley guard
1	Belt-cover bracket
1	Carriage bolt (1/4 x 1)
1	Hex-head bolt (3/8 x 1 inch)
1	Clip nut

## Installing the Pulley Guard and Belt-Cover Bracket

1. Align the holes of the pulley guard to the hole in the forward deflector bracket and the outboard hole in the forward deck flange (Figure 7).

**Note:** The pulley bracket wraps around the outboard edge of the deflector bracket

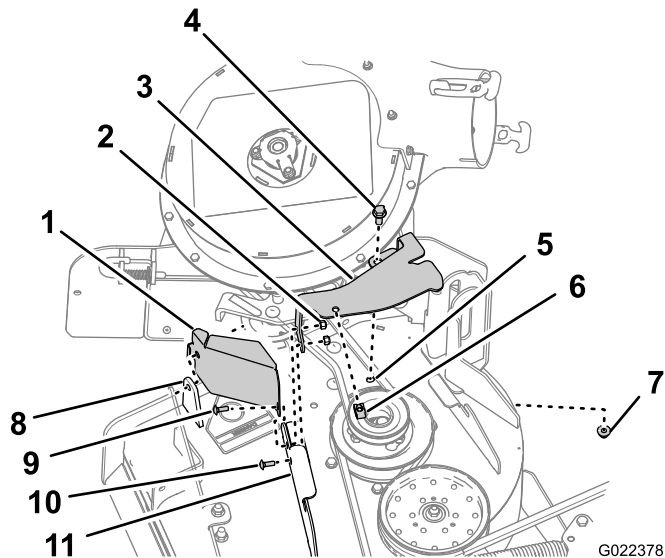


Figure 7

- |   |  |
|---|--|
| 1. Pulley guard                         | 7. Flange nut (3/8 inch)                       |
| 2. Locknut (1/4 inch, blower kit)       | 8. Deflector bracket (forward)                 |
| 3. Belt-cover bracket                   | 9. Hex-head bolt (1/4 x 1 inch, CE kit)        |
| 4. Hex-head bolt (3/8 x 1 inch, CE kit) | 10. Carriage bolt (1/4 x 3/4 inch, blower kit) |
| 5. Deck hole                            | 11. Deck flange (forward)                      |
| 6. Clip nut                             |  |

3. Secure the pulley guard and the belt cover bracket to the forward deck flange at the outboard hole with the carriage bolt (1/4 x 1 inch, CE kit) and the locknut (1/4 inch, blower kit) that you removed in step 1 of [Removing the Belt Cover Bracket \(page 3\)](#); refer to Figure 7.
4. Secure the belt cover bracket to the forward deck flange at the inboard hole with the a carriage bolt (1/4 x 3/4 inch, blower kit) and the locknut (1/4 inch, blower kit) that you removed in step 1 of [Removing the Belt Cover Bracket \(page 3\)](#); refer to Figure 7.
5. Align the hole in the rear flange of the belt-cover bracket with the hole in the deck where you removed the belt cover bracket in step 1 of [Removing the Cover Mounting Bracket \(page 3\)](#); refer to Figure 7.
6. Secure the rear flange of the belt-cover bracket to the deck with a hex-head bolt (3/8 x 1 inch) and the flange nut (3/8 inch) that you removed in step 1 of [Removing the Cover Mounting Bracket \(page 3\)](#); refer to Figure 7.
7. Align the clip nut with the hole in the top of the belt-cover bracket, and push the clip nut onto the bracket (Figure 7).

2. Align the belt-cover bracket to the holes at the rear side of the forward deck flange (Figure 7).

# 6

## Installing the Upper Guards

### Parts needed for this procedure:

1	Shaft guard
1	Forward guard
1	Tensioner guard

### Installing the Shaft Guard

1. Align the shaft guard to the 3 bolts and 3 nuts that secure the upper-bearing housing (Figure 8).

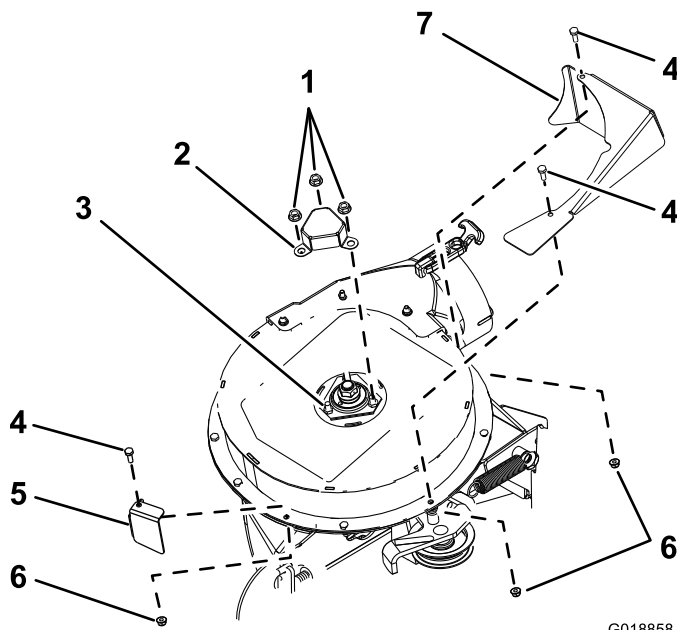


Figure 8

G018858

1. Serrated nut (5/16 inch)
2. Shaft guard
3. Bolt and nut (upper bearing housing)
4. Hex-head bolt (1/4 x 3/4 inch)
5. Forward guard
6. Locknut (1/4 inch)
7. Tensioner guard

2. Secure the shaft guard to the blower with the 3 serrated nuts that you removed in step 1 of [Removing the Shaft Cover and Hardware](#) (page 4); refer to (Figure 8).

### Installing the Upper Guards

1. Align the forward guard to the upper blower housing (Figure 8).
2. Secure the forward guard to the upper blower housing with a hex-head bolt (1/4 x 3/4 inch) and a locknut (1/4 inch) that you removed in step 3 of [Removing the Shaft Cover and Hardware](#) (page 4); refer to Figure 8).

3. Align the tensioner guard to the upper blower housing (Figure 8).
4. Secure the tensioner guard to the upper blower housing with 2 hex-head bolt (1/4 x 3/4 inch) and 2 locknut (1/4 inch) that you removed in step 3 of [Removing the Shaft Cover and Hardware](#) (page 4); refer to Figure 8.

# 7

## Installing the Lower Guard

### Parts needed for this procedure:

1	Lower guard
2	Hex-head bolt (1/4 x 3/4 inch)
2	Washer (1/4 x 5/8)
2	Locknut (1/4 inch)

### Remove the Blower

If installed remove the blower assembly from the mower deck as follows:

1. Pull the spring loaded idler pulley away from the fixed spring post, and remove the belt from the idler pulley (Figure 9).

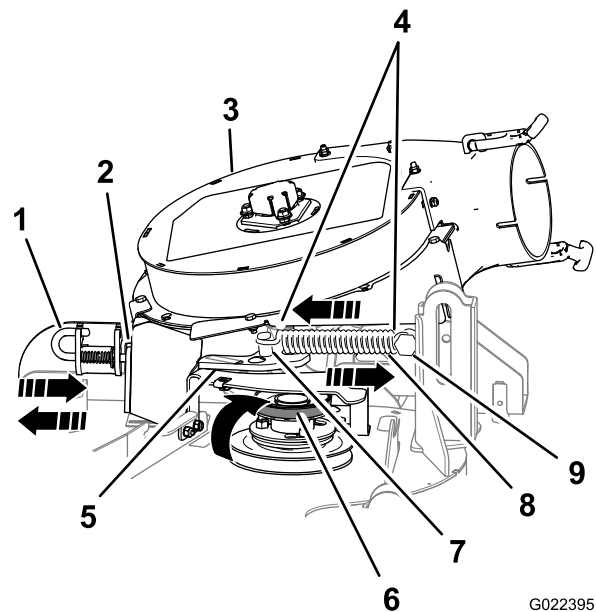
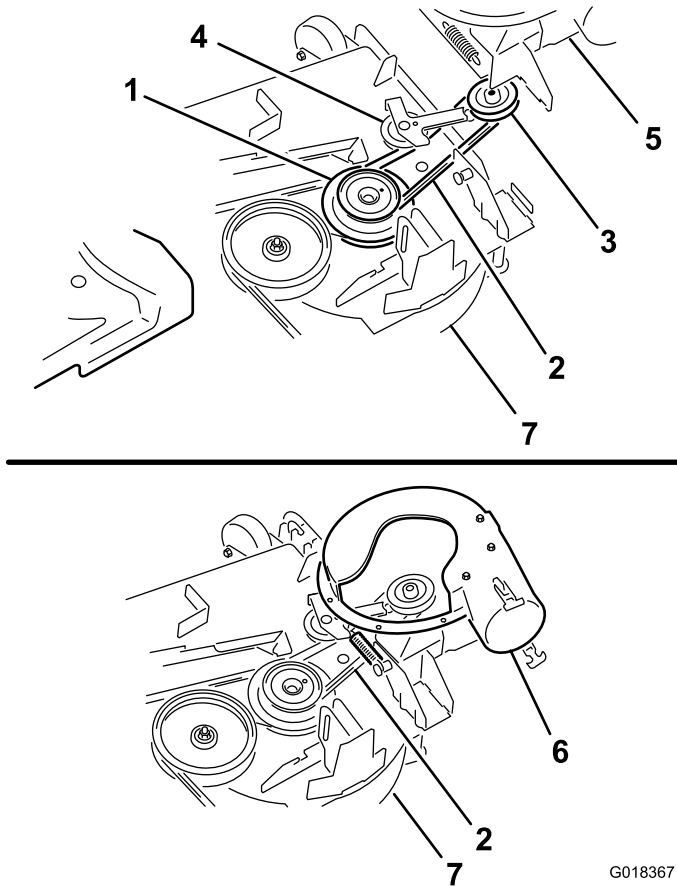


Figure 9

G022395

1. Latch pin (locking position)
2. Chute bracket
3. Blower assembly
4. Spring hook ends
5. Idler pivot bracket
6. Belt (aligned to the idler pulley)
7. Idler spring post
8. Spring
9. Fixed spring post

2. Move the idler pivot bracket toward the fixed spring post. remove the hook of the spring from the idler spring post (Figure 9).
3. Route the belt beneath the idler pulley (Figure 10).



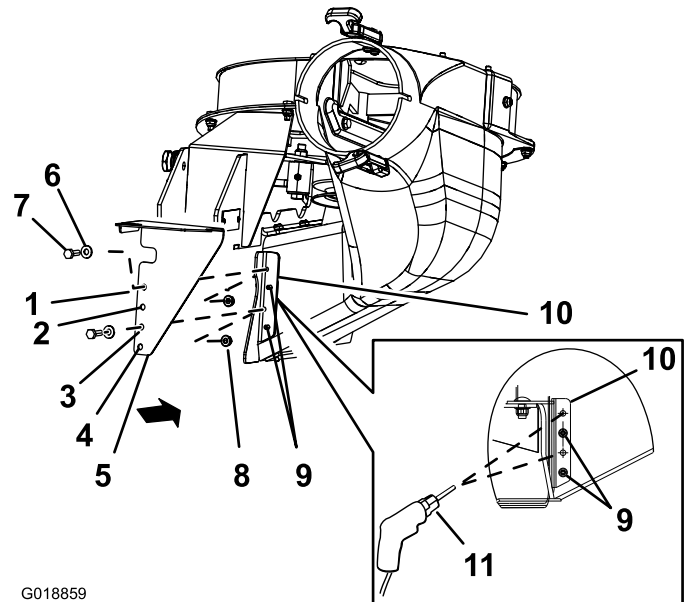
**Figure 10**

- |                         |   |
|-------------------------|---|
| 1. Drive pulley         | 5. Blower (housing repositioned for illustrative purposes)                |
| 2. Blower belt          | 6. Blower in position (housing portion removed for illustrative purposes) |
| 3. Blower pulley        | 7. Mower deck   |
| 4. Idler/tension pulley |   |

4. Remove the belt from drive pulley (Figure 10).
5. Move the blower latch pin to the open position and swing the blower outward (Figure 9).
6. Remove the blower and belt from the mower deck.

## Drilling the Mounting Holes for the Lower Guard

1. Align the lower guard to the blower-chute bracket as shown in Figure 11.



**Figure 11**

- |                |                                   |
|----------------|-----------------------------------|
| 1. Hole 1      | 7. Hex-head bolt (1/4 x 3/4 inch) |
| 2. Hole 2      | 8. Locknut (1/4 inch)             |
| 3. Hole 3      | 9. Rivet tails                    |
| 4. Hole 4      | 10. Blower-chute bracket          |
| 5. Lower guard | 11. Drill bit 7 mm (0.277 inch)   |
| 6. Washer      |                                   |

2. Align hole 2 and hole 4 of the lower guard to the rivet tails protruding through the blower-chute bracket (Figure 11).

**Note:** Ensure that the flange of the lower guard (the flange with the holes) is flat against the blower-chute bracket.

3. Mark the outline of hole 1 and hole 3 of the lower guard on the blower-chute bracket, and remove the guard (Figure 11).
4. Locate the marks on the blower-chute bracket, and center-punch the locations.
5. Drill 7 mm (0.277 inch) holes in the blower-chute bracket at the 2 center-punch marks (Figure 11).



## Installing the Lower Guard

**Note:** Install the lower guard with the blower assembly removed from the mower deck; refer to the *48in E-Z Vac™ Blower and Drive Kit Installation Instructions*.

1. Align the lower guard to the blower-chute bracket (Figure 11).
2. Align hole 2 and hole 4 of the lower guard to the rivet tails protruding through the blower-chute bracket (Figure 11).
3. Secure the lower guard to the blower with 2 hex-head bolt (1/4 x 3/4 inch), 2 washers, and 2 locknut (1/4 inch) through hole 1 and hole 4 of the guard (Figure 11).

## Installing the Blower

If you removed the blower in [Remove the Blower \(page 6\)](#), install the blower assembly to the mower deck as follows:

**Note:** Refer to the *48in, 52in, and 60in E-Z Vac™ Twin Soft Bagger Owner's Manual*.

1. Align the blower belt around the pulley of the blower (Figure 10).
2. Align the pivot pin on the blower with the pivot pin hole in the deck and lower the blower onto the deck.
3. Open the blower latch pin, close the blower to the deck, and secure the latch pin to the chute bracket (Figure 9).

**Note:** Ensure that the latch pin extends through the hole in the chute bracket and the pulley guard.

4. Temporarily route the belt beneath the idler pulley (Figure 10).
5. Route the belt around the drive pulley (Figure 10).
6. Move the idler/tension pulley toward the fixed spring post, and install the spring by aligning the spring hook on to the idler spring post (Figure 9).
7. Pull the spring loaded idler/tension pulley away from the fixed spring post, and route the belt around the idler pulley (Figure 10).

# 8

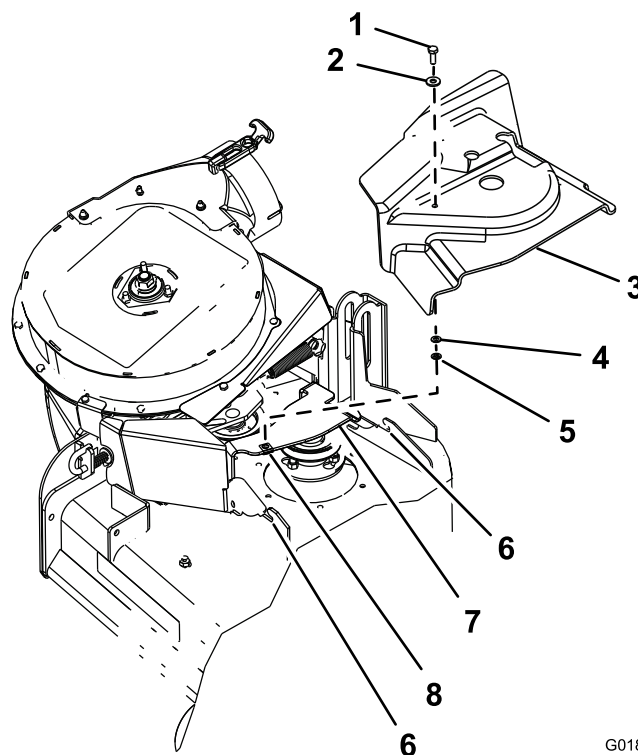
## Installing the Belt Cover

### Parts needed for this procedure:

1	Hex-head bolt (1/4 x 3/4 inch)
1	Washer (5/16 x 3/4 inch)
1	Washer (1/4 x 1/2 inch)
1	Retainer

### Installing the Belt Cover Bolt

1. Assemble the washer (5/16 x 3/4 inch) to the hex-head bolt (1/4 x 3/4 inch) as shown in Figure 12.



G018860

Figure 12

- |                                   |                       |
|-----------------------------------|-----------------------|
| 1. Hex-head bolt (1/4 x 3/4 inch) | 5. Retainer           |
| 2. Washer (5/16 x 3/4 inch)       | 6. Deck bracket notch |
| 3. Belt cover                     | 7. Belt-cover bracket |
| 4. Washer (1/4 x 1/2 inch)        | 8. Clip nut           |



2. Insert the bolt and washer through the hole in the top of the belt cover from the blower and drive kit ([Figure 12](#)).
3. From the bottom of the belt cover, assemble the washer (1/4 x 1/2 inch) and retainer over the hex-head bolt threads ([Figure 12](#)).

Ensure that the bolt head and washer are positioned flush with the upper surface of the belt cover and the washer and retainer are flush with the bottom surface of the cover.

## Installing the Belt Cover

1. Unlatch the blower and pull it out partially.
2. Align the belt cover with the notches in the deck flanges ([Figure 12](#)).
3. Align the hex-head bolt in the cover with the clip nut on the belt-cover bracket.
4. Secure the belt cover to the cover bracket with the hex-head bolt ([Figure 12](#)).
5. Open the blower latch pin, close the blower to the deck, and secure the latch pin to the chute bracket.

# 9

## Installing the Support Rod

### Parts needed for this procedure:

1	Support rod
---	-------------

### Procedure

1. Slide the existing support rod out of the mower-deck curtain ([Figure 13](#)); retain the rod for future use of the machine without the bagger.

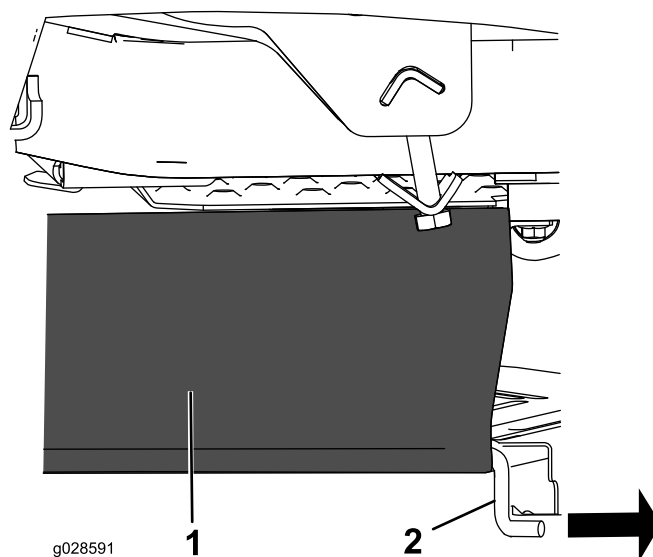


Figure 13

1. Curtain
2. Support rod

2. Insert the new support rod into the curtain ([Figure 14](#)).

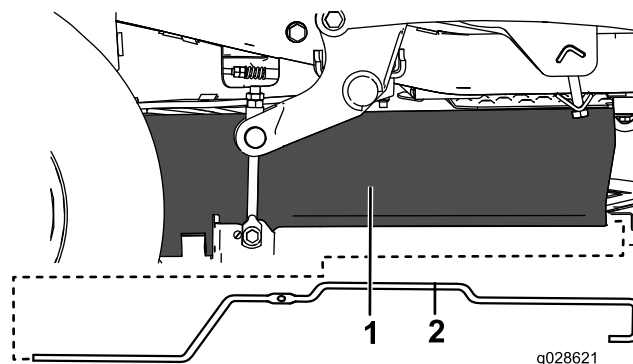


Figure 14

1. Curtain
2. Support rod

3. Secure the support rod and mower-deck curtain with the bolt you removed in [Removing the Belt Cover](#) (page 2)([Figure 2](#)).

**Notes:**

**Notes:**



**Count on it.**