



TITAN® ZX Riding Mower

Model No. 74846—Serial No. 315000001 and Up

Model No. 74848—Serial No. 315000001 and Up

Form No. 3394-403 Rev A

Setup Instructions

Setup

Loose Parts

Use the chart below to verify that all parts have been shipped.

Procedure	Description	Qty.	Use
1	No parts required	—	Connect the battery.
2	Rear hitch Bolt (5/16 x 2-1/2 inches) Locknut (5/16 inch)	1 2 2	Install the rear hitch.
3	No parts required	—	Set up the motion-control levers and the seat.
4	Rollbar Rollbar support Reinforcing bracket ROPS plates Bolt (1/2 x 3-1/2 inches) Bolt (1/2 x 4-1/2 inches) Hex locknut (1/2 inch) Flat washer (1/2 inch) Thrust washer Flange locknut (1/2 inch) Bolt (5/16 x 3-3/4 inches) Flange locknut (5/16 inch, may be pre-installed) Flat washer (5/16 inch)	1 2 2 4 10 2 8 8 4 10 2 2 2	Install the Roll Over Protection System (ROPS).
5	No parts required	—	Check the mower adjustment.
6	Ignition key Operator's Manual Engine Operator's Manual	1 1 1	Complete the setup.

Note: Determine the left and right sides of the machine from the normal operating position.



1

Connecting the Battery

No Parts Required

Procedure

1. Locate the battery and negative battery cable.
2. Remove the plastic cap from the negative battery post.
3. Remove the fasteners on the negative battery cable, and use them to secure the negative battery cable to the negative battery post (Figure 1).

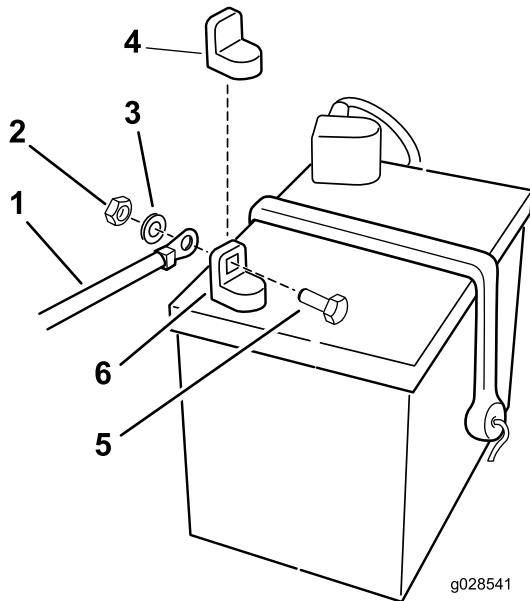


Figure 1

- | | |
|---------------------------|------------------------------|
| 1. Negative battery cable | 4. Negative battery post cap |
| 2. Nut | 5. Bolt |
| 3. Washer | 6. Negative battery post |

2

Installing the Rear Hitch

Parts needed for this procedure:

1	Rear hitch
2	Bolt (5/16 x 2-1/2 inches)
2	Locknut (5/16 inch)

Procedure

Install the bracket to the frame as shown in Figure 2 and Figure 3.

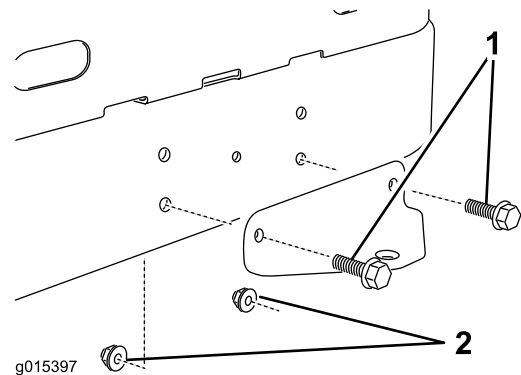


Figure 2

Before assembly

1. Bolts

2. Locknuts

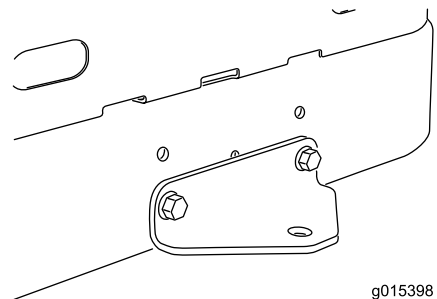


Figure 3

After assembly

3

Setting up the Motion-control Levers and the Seat

No Parts Required

Procedure

1. Locate the motion-control levers attached, but folded down on the machine.
2. Remove the upper bolt (3/8 x 1 inch) and washer; loosen the lower bolt (3/8 x 1 inch).
3. Raise the motion control levers to the upright position.
4. Align the holes in the motion-control lever with the holes in the control-arm shaft, and install the bolt and washer removed previously. Repeat this for both controls levers.

Note: Hand tighten all fasteners.

5. Setup the seat as follows ([Figure 4](#)):

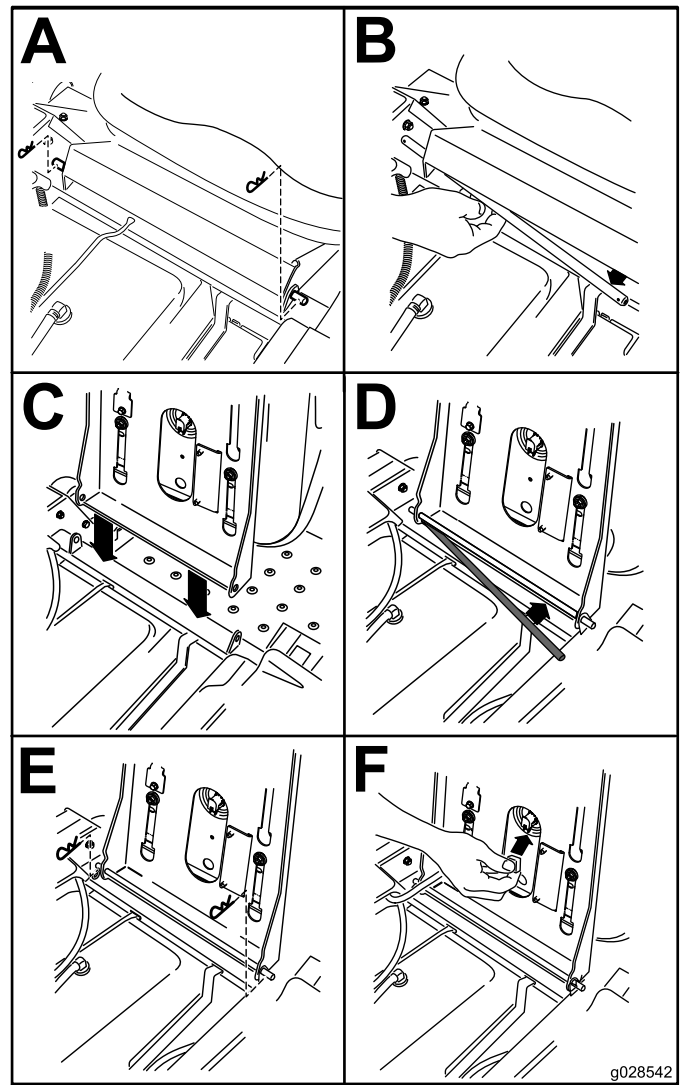


Figure 4

- A. With the motion control levers in the outward, neutral lock position, remove the hairpin cotter pins on the seat rod securing the seat to the machine.
 - B. Slide the seat rod out from the brackets and seat frame.
 - C. Rotate the seat 180 degrees and install it into the bracket you removed it from, using the rod and hairpin cotter pins removed previously.
 - D. Connect the interlock switch cable to the seat.
 - E. Lower the seat into the operating position.
6. Move the control levers back to the center position (neutral).
 7. Verify the motion control levers are properly aligned. Adjust as necessary. Tighten all fasteners.

4

Installing the Roll Over Protection System (ROPS)

Parts needed for this procedure:

1	Rollbar
2	Rollbar support
2	Reinforcing bracket
4	ROPS plates
10	Bolt (1/2 x 3-1/2 inches)
2	Bolt (1/2 x 4-1/2 inches)
8	Hex locknut (1/2 inch)
8	Flat washer (1/2 inch)
4	Thrust washer
10	Flange locknut (1/2 inch)
2	Bolt (5/16 x 3-3/4 inches)
2	Flange locknut (5/16 inch, may be pre-installed)
2	Flat washer (5/16 inch)

Installing the Rollbar Supports

Complete the following steps for both left and right rollbar supports.

1. Locate the factory installed brace attached to the frame between the engine and the rear wheel (see [Figure 5](#) and [Figure 6](#)).

Note: If preferred, the rear wheels may be removed for easier access to the brace.

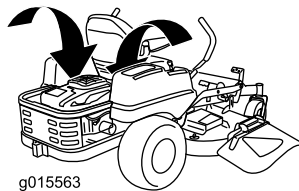


Figure 5

Location of the braces

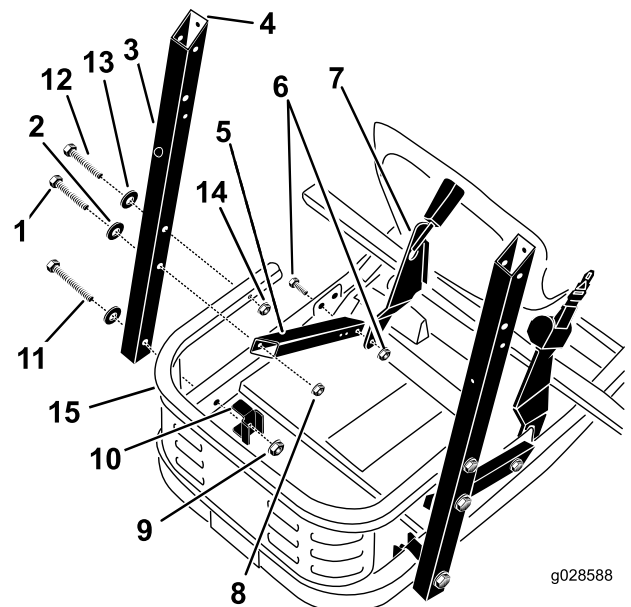


Figure 6

1. Bolt (1/2 x 3-1/2 inches) (2)
2. Thrust washer (4)
3. Rollbar support
4. Cutout faces the rear
5. Brace, existing
6. Bolt (1/2 x 1-1/4 inch) and locknut (1/2 inch), existing
7. Seat belt assembly, existing
8. Hex locknut (1/2 inch) (2)
9. Flange locknut (1/2 inch) (2)
10. Reinforcing bracket (2)
11. Bolt (1/2 x 4-1/2 inch) (2)
12. Bolt (5/16 x 3-3/4 inch) (2)
13. Flat washer (5/16 inch) (2)
14. Flange locknut (5/16 inch) (2)
15. Engine guard

2. Loosen the locknut that secures the brace to the frame. Stop when the brace swings freely ([Figure 6](#)).
3. Attach the rollbar support to the frame and the brace to the rollbar support as shown in [Figure 6](#). Leave the bolts loose enough that the parts are free to shift around.

Note: Ensure that the cutout at the top of the support tube faces the rear of the machine.

Note: Note the orientation of the reinforcing bracket.

4. Attach the rollbar support to the engine guard as shown in [Figure 6](#).

Attaching the ROPS Plates

Assemble the ROPS plates to the rollbar as shown in [Figure 7](#). Leave the bolts loose enough that the parts are free to shift around.

Note: Ensure that the locknuts are on the inside of the support tube.

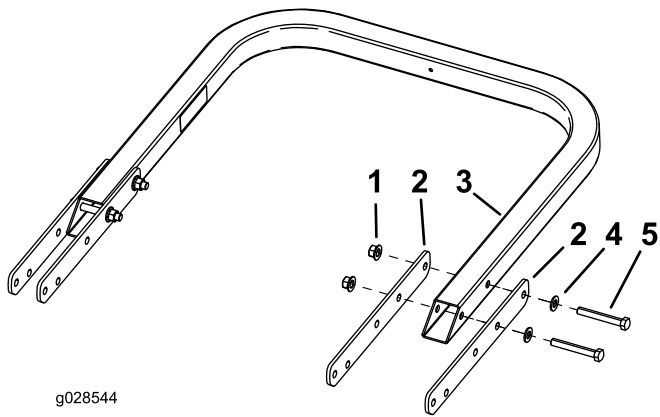


Figure 7

- | | |
|-----------------------|----------------------------------|
| 1. Flange locknut (4) | 4. Flat washer (4) |
| 2. ROPS plates (4) | 5. Bolt (1/2 x 3-1/2 inches) (4) |
| 3. Rollbar | |

Installing the Rollbar

1. Lift the rollbar with the cutouts in ends of the tube facing up and align the holes with the rollbar supports.

Note: A second person to perform the next step will be helpful.

2. Attach the rollbar to the rollbar supports as shown in Figure 8. Leave the bolts loose.

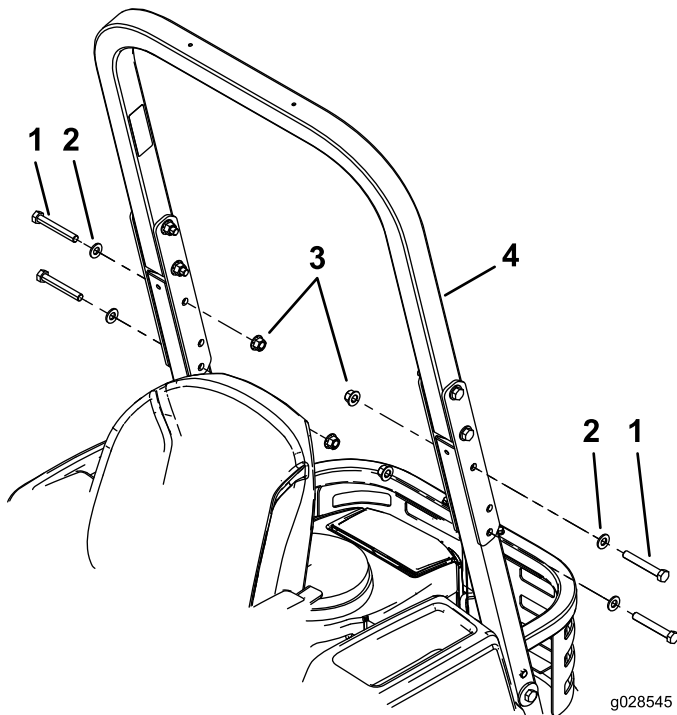


Figure 8

- | | |
|----------------------------------|-----------------------|
| 1. Bolt (1/2 x 3-1/2 inches) (4) | 3. Flange locknut (4) |
| 2. Flat washer (4) | 4. Rollbar |

Making Final Adjustments

1. Tighten the fasteners in the order specified in the following table. Figure 6, Figure 7, and Figure 8 will help identify the parts.

Sequence	Description	Torque
1	Four bolts on each side attaching the pivot brackets to the rollbar and rollbar support.	400 ± 40 in-lbs (45 ± 4 N-m)
2	Two bolts on each side attaching the rollbar support to the frame and the rollbar support to the brace.	300 ± 30 in-lbs (34 ± 3 N-m)
3	One bolt on each side attaching the braces to the machine frame.	75 ± 8 ft-lbs (102 ± 11 N-m)
4	One bolt on each side attaching the rollbar to the engine guard.	60 to 80 in-lbs. (7 to 9 N-m)

Note: Do not exceed torque specifications. Doing so may cause structural damage to the ROPS or the frame of the machine.

5

Checking the Mower Adjustment

No Parts Required

Procedure

Adjust the side-to-side level and the front-to-rear blade slope. Use the relevant procedures in the *Operator's Manual* to verify that the deck is level, and make any adjustments as necessary. Refer to the *Operator's Manual* for more information.

6

Completing the Setup

Parts needed for this procedure:

1	Ignition key
1	<i>Operator's Manual</i>
1	<i>Engine Operator's Manual</i>

Procedure

Checking the Tire Pressure

Check the front and rear tires for proper inflation; refer to Checking the Tire Pressure in the *Operator's Manual* for the recommended inflation pressure.

Checking the Side-Discharge Chute

Remove the packing restraint holding the side discharge chute up and lower the chute into place.

Checking the Engine-Oil Level

Before you start the engine and use the machine, check the oil level in the engine crankcase; refer to Checking the Oil Level in the *Operator's Manual*.

Keep all the following items with the machine:

- Ignition key
- *Operator's Manual*
- *Engine Operator's Manual*

Notes:



Count on it.