



*205 Seeder,
525 and 528 Dethatchers*

Models

- | | | |
|--------------|-------------------------|--------------------------|
| 62060 | Seeder - 5hp | : 790101 & up |
| 62061 | Dethatcher - 8hp | : 790101 & up |
| 62062 | Dethatcher - 5hp | : 790101 & up |

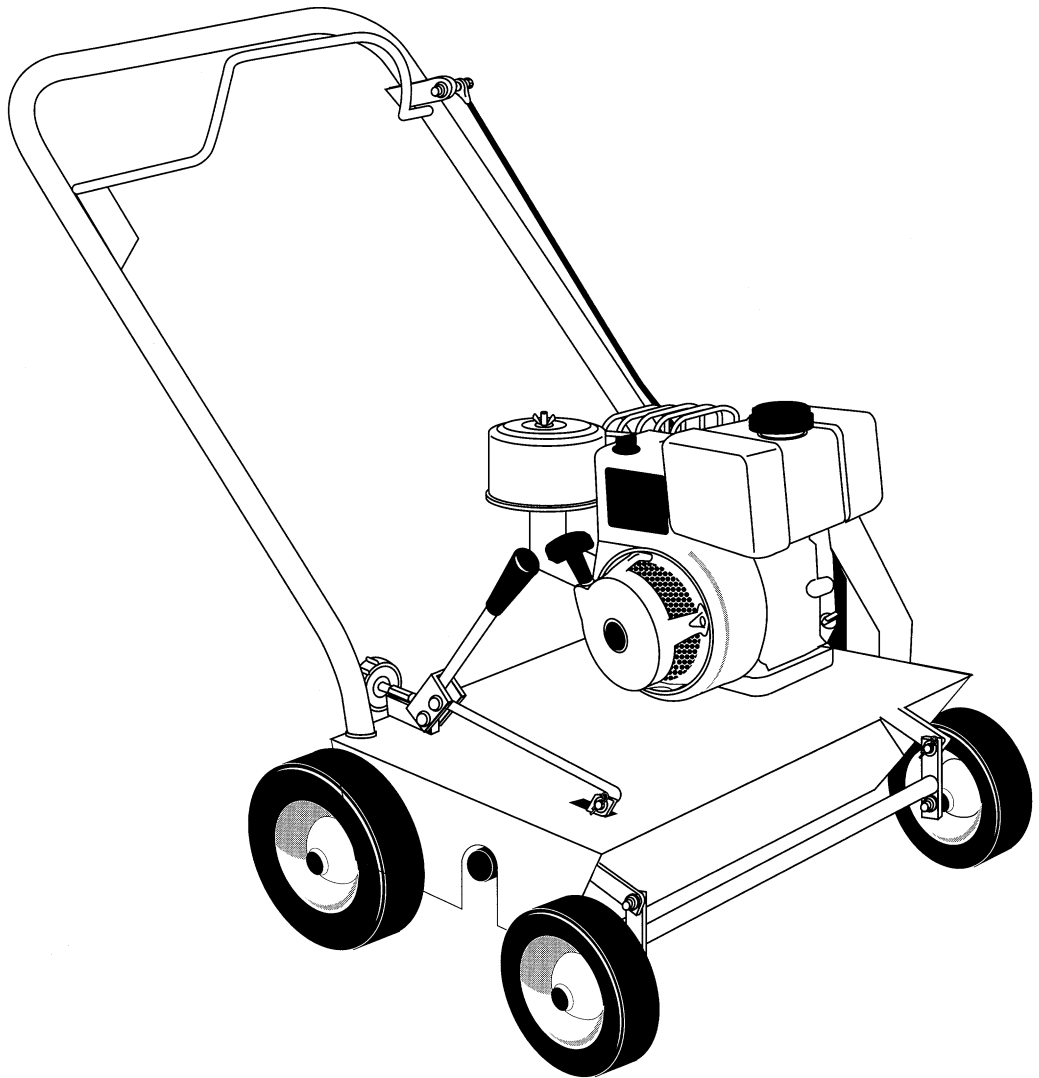


Table of Contents

| | | |
|---|---|--------------------------------|
| Section 1: Lawn Comber Specifications | Section 12: Lubrication Schedule | Section 23: Delta Blade Wear |
| Section 2: Features and Controls | Section 13: Inspection Schedule | Section 24: Drawing Delta Reel |
| Section 3: Putting Into Service | Section 14: Engine Service and Warranty | Section 25: Parts Delta Reel |
| Section 4: General Operating Instructions | Section 15: Adjusting Blade Height & Blade Wear | Section 26: Drawing 525 & 528 |
| Section 5: Warnings | Section 16: Turn Rotor End to End | Section 27: Parts 525 & 528 |
| Section 6: Blade Versatility | Section 17: To Replace Worn Blades | Section 28: Drawing 205 Seeder |
| Section 7: Before You Start | Section 18: Drive Belt Replacement | Section 29: Parts 205 Seeder |
| Section 8: Starting | Section 19: Storage | Section 30: Warranty |
| Section 9: Finishing | Section 20: Lawn Seeder Operating Instructions | Section 31: Sound Test |
| Section 10: Maintenance and Service | Section 21: General Information | Section 32: Vibration Test |
| Section 11: General Safety | Section 22: Setting the Seed Hopper | |

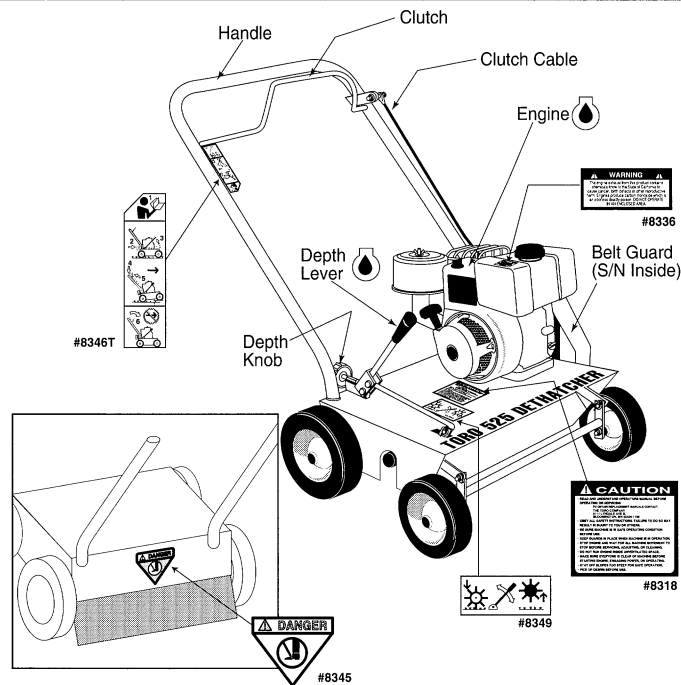
1

Specifications

| | Engine hp | Net Weight (lbs) | Shipping Weight (lbs) | Width (inches) | Height (inches) | Length (inches) |
|-----|-----------|------------------|-----------------------|----------------|-----------------|-----------------|
| 205 | 5 B&S | 175 | 189 | 27.75 | 24 | 33 |
| 525 | 5 B&S | 129 | 145 | 27 | 24 | 17.25 |
| 528 | 7 B&S | 142 | 158 | 27 | 26.5 | 17.25 |

2

Features and Controls



3

Putting Into Service

- 1) Install handle and bolt in place.
- 2) Add manufacturer's recommended oil to engine. (Refer to enclosed engine manufacturer's manual and follow starting instructions before proceeding further.)

! 3) Attach clutch cable to handle.

Caution: Be sure clutch cable is routed as shown in section 33 or 35.

- 4) Test clutch handle to insure clutch spring stretches 3/4" minimum, 1" maximum and releases freely.
- 5) The engine speed is pre-set by manufacturer. The correct speed is 3200 to 3400 RPM. Consult the engine manufacturer's manual for directions to adjust the governor and carburetor if speed is not within this range.








4

General Operating Instructions






5

Warnings

WARNING: DO NOT 

-  Do not service when running.
-  Do not use on any surface other than grass.
-  Do not operate on slopes exceeding 35%.
-  Do not place hands or feet near moving or rotating parts.
-  Do not run engine in an unventilated space.
-  Do not run engine while servicing. Remove spark plug wire before commencing any service work.
-  Do not remove guards when operating.

WARNING: DO 

-  Read all maintenance and service instructions before attempting work.
-  Read engine manufacturer operating and maintenance instructions.
-  Inspect lawn to be power raked and remove rocks, wire, string and other objects that might present a hazard before starting.
-  Identify and mark all in ground objects to be avoided, such as sprinkler heads, stakes, water valves, clothes line anchors, etc.
-  This machine is for use on grass lawns only.

6

Blade Versatility

Flail Blade

Thatch is the dense layer of clippings, roots and stems that forms between the soil and the base of the grass. As thatch builds up it prevents water, air and fertilizer from being absorbed into the soil, which causes shallow root development leading to drought susceptibility and winter kill. Excessive thatch also creates an ideal environment for insects and lawn diseases. Power raking removes this thatch layer and restores your lawn to good health.

Delta Blade

Created primarily for overseeding existing lawn. Effectively incorporates grass seed into the soil. This is an easy, reliable method for rejuvenating poor lawns. The Delta blade is also very useful as a vertical mower for cutting running stem grasses and for aerifying, to open up the soil to oxygen, water, nutrients and other chemicals. Beneficial on slopes, terraces and in high clay content soils where water runoff is a problem.

7

Before You Start

- Mow the lawn to its normal cut height.
- Allow lawn to dry. Wet conditions may cause increased damage to healthy grass plants.
- Set rake depth so that blades just touch on a flat surface like a sidewalk or drive.
- Lawns with deep thatch exceeding 3/4" may be best dethatched in two treatments (spring and fall) to avoid major shock to an old lawn.

8

Starting

- To engage clutch in heavy thatch, bear down on the handle to slightly raise the front wheels. Then engage the clutch and slowly lower the unit into the turf.
- Do a small test area at a slow walk and stop:
 - If the engine RPM drops excessively your depth is set too low.
 - If the unit pulls you forward and bounces roughly your setting is too low.

9

Finishing

- Remove all extracted thatch from the grass and compost or dispose of properly.

Other procedures to improve your lawn may include:

- Aeration
- Fertilization

General Safety

Turning & Maneuvering Your Machine

- Bear down on the handle and pivot on the rear wheels.



DO NOT operate this machine without first reading owner's manual.

CAUTION

Toro parts have been designed and specified to meet commercial operating standards for strength and durability. For reliability and preservation of design safety standards, replacements should only be made with genuine Toro parts or material of equivalent type and strength.

Special Considerations on Hills

- Warning: DO NOT operate on hills exceeding 35% grade.
- It is recommended for best uniformity that hills be power raked across the slope, not up and down the slope.
- DO NOT leave the unit sitting on a slope unattended. It has no parking brake.

CAUTION

Any modifications or additions to this equipment without written authorization from the manufacturer, will void all manufacturer's warranties.

Transporting Your Lawn Comber

- Shut off engine and allow engine to cool 2 minutes.
- Close folding handle if unit is furnished with one.
- Using two people to lift machine is recommended.
- Secure in place during transport.

12 Lubrication Schedule

| 20 hrs | 60 hrs | as req'd | store | See Section 4 |
|-------------------------------------|-------------------------------------|-------------------------------------|-------------------------------------|---|
| <input type="checkbox"/> | <input checked="" type="checkbox"/> | <input checked="" type="checkbox"/> | <input checked="" type="checkbox"/> | Engine oil (Refer to engine mfg. manual.) |
| <input checked="" type="checkbox"/> | <input type="checkbox"/> | <input checked="" type="checkbox"/> | <input checked="" type="checkbox"/> | Depth adjust screw, motor oil. |

13 Inspection Schedule

| Each Use | 20 hrs | |
|-------------------------------------|-------------------------------------|--|
| <input checked="" type="checkbox"/> | <input type="checkbox"/> | Engine oil (Refer to engine mfg. manual) |
| <input checked="" type="checkbox"/> | <input type="checkbox"/> | Clutch cable |
| <input checked="" type="checkbox"/> | <input type="checkbox"/> | Decals and warning |
| <input checked="" type="checkbox"/> | <input type="checkbox"/> | Fasteners and fittings |
| <input type="checkbox"/> | <input checked="" type="checkbox"/> | Belt wear (cracks, fraying, corners rounding) |
| <input type="checkbox"/> | <input checked="" type="checkbox"/> | Blade wear (see section 15) |
| <input type="checkbox"/> | <input checked="" type="checkbox"/> | Frame condition (rust, cracks, etc.) |
| <input checked="" type="checkbox"/> | <input type="checkbox"/> | Blade shaft spring clips (see section 16 & 18) |
| <input checked="" type="checkbox"/> | <input type="checkbox"/> | Engine air cleaner (see engine manual) |

14 Engine Service and Warranty

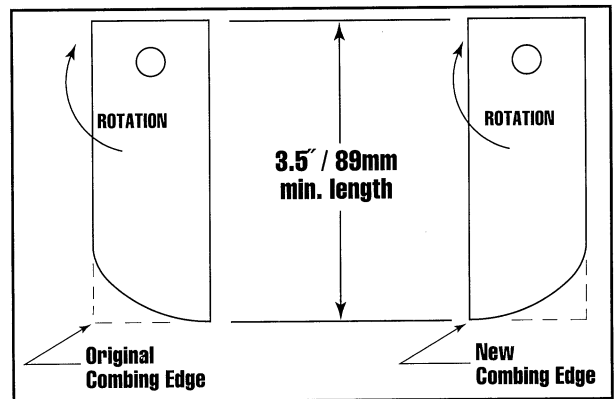
Contact your nearest engine manufacturer's authorized servicing dealer for engine service and warranty questions. Follow the engine manufacturer's maintenance instructions. Should any malfunction occur with the engine during the warranty period, take it to an Authorized Service Dealer. **DO NOT** tear down the engine, as this may void the Engine Manufacturer's Warranty.

15 Adjusting Blade Height and Blade Wear

The blades are raised and lowered by means of a height adjustment lever on the right side of the deck. The knob at the rear of this lever controls the depth. Turning the knob counter-clockwise allows the blades to go deeper. Turning the knob clockwise prevents the blades from going as deep.

After your unit has been used for some time, the blades will tend to wear on the striking edge as shown. When this happens their dethatching performance will diminish. A new combing edge may be obtained by simply rotating the entire rotor shaft assembly end for end, which will result in a new edge as shown. This process may be repeated until the blades reach their wear limits. To turn the rotor shaft end for end follow steps in section 18.

See section 23 for Delta Blade Wear.



16

Turn Rotor End to End

Refer to Section 15

- | | |
|--|--|
| 1) Disconnect spark plug. | 7) Inspect shaft, bearings, blade length, blade safety clips and spacers. |
| 2) Allow engine to cool. | 8) Rotate shaft end for end. |
| 3) Remove belt guard. | 9) Reinstall bearing bolts. |
| 4) Remove belt and pulley from rotor shaft. | 10) Reinstall pulley, ensuring pulley is flush against the bearing collar. |
| 5) Remove plastic cap from opposite end of shaft and install where pulley was located. | 11) Check pulley alignment to engine shaft pulley and adjust if necessary. |
| 6) Remove the 4 bearing bolts and drop out rotor shaft. | 12) Reinstall belt and belt guard. |

17

To Replace Worn Blades

When blades have reached the wear limits as shown in section 15, the blades should be replaced with new ones to maintain proper combing action. It is desirable to install new blade shafts, should they show any signs of wear. Blade shaft spring clips must not be reused. Use only genuine Toro replacement parts.

- | | |
|--|--|
| 1) Remove spark plug wire. | 6) Drive blade shafts out toward the center. The blades and spacers will fall off. |
| 2) Let engine cool. | 7) Install new blades, replacing rubber spacers if necessary. Refer to parts drawing for blade/spacer placement. |
| 3) Remove belt guard, belt and shaft pulley. | 8) Install new spring clips. |
| 4) Take out and dispose of spring clips that hold the shaft in position. | 9) Repeat for remaining three shafts. |
| 5) Inspect the blade shafts and replace if bent or worn. | 10) Reinstall pulley and align to engine pulley. |
| | 11) Reinstall belt and belt guard. |

18

Drive Belt Replacement

- | | |
|--|--|
| 1) Remove spark plug wire and allow engine to cool. | 5) Check engine pulley to rotor pulley alignment and adjust if necessary. |
| 2) Remove belt guard. | 6) Inspect belt idler; idler roller bearing should rotate smooth and free. Idler pivot arm should be free with no more than 0.25" side play. Replace if necessary. |
| 3) Remove old belt. | 7) Install new belt by looping over bottom pulley first, then over engine pulley. Be sure belt idler and belt keepers are outside the loop of the belt. |
| 4) Inspect pulley for wear and replace if necessary. | 8) Reinstall the belt guard and adjust belt keeper as necessary. |

19

Storage

1. Refer to engine manufacturer's instructions for engine storage information.
2. Clean machine.
3. Cover all scratches with touch up paint.
4. Lubricate according to Lubrication Schedule. (Section 12)
5. Covered or indoor storage is recommended.

21

General Information

The seed hopper is located at the front of the machine and the seed is dropped 2" spacing in front of the blades. The blades plant the seeds by slicing them into the soil. As the lawn seeder moves forward, the heavy neoprene deflector at the rear smooths the soil so the seed is covered and the area seeded is even and not torn up.

To avoid the unattractive effect of "rows" of new grass, it is recommended to overseed in one direction, then "cross-cut" at approximately 45 degrees from the first run. When you use this procedure, set the seed drop setting at 1/2 of the recommended application rate per 1,000 square feet.

The lawn seeder is not a "thatcher." Excess thatch (if present) should be removed with a thatcher before overseeding. Seed must have contact with soil (including soil cover) to germinate.

22

Setting the Seed Hopper

There is a seed application chart on the under side of the seed hopper cover. The seed adjustment dial is on the front of the seed hopper. To set the seed adjustment, loosen the thumb screw, rotate the adjusting dial to the correct setting, then tighten the thumb screw. The seed control rod is located between the handles of the seeder unit.

When the seed control lever is rotated, the adjusting dial controls how far the seed gate can open. The seed control rod allows you to turn off the flow of seed when making turns and when filling the seed hopper.

23

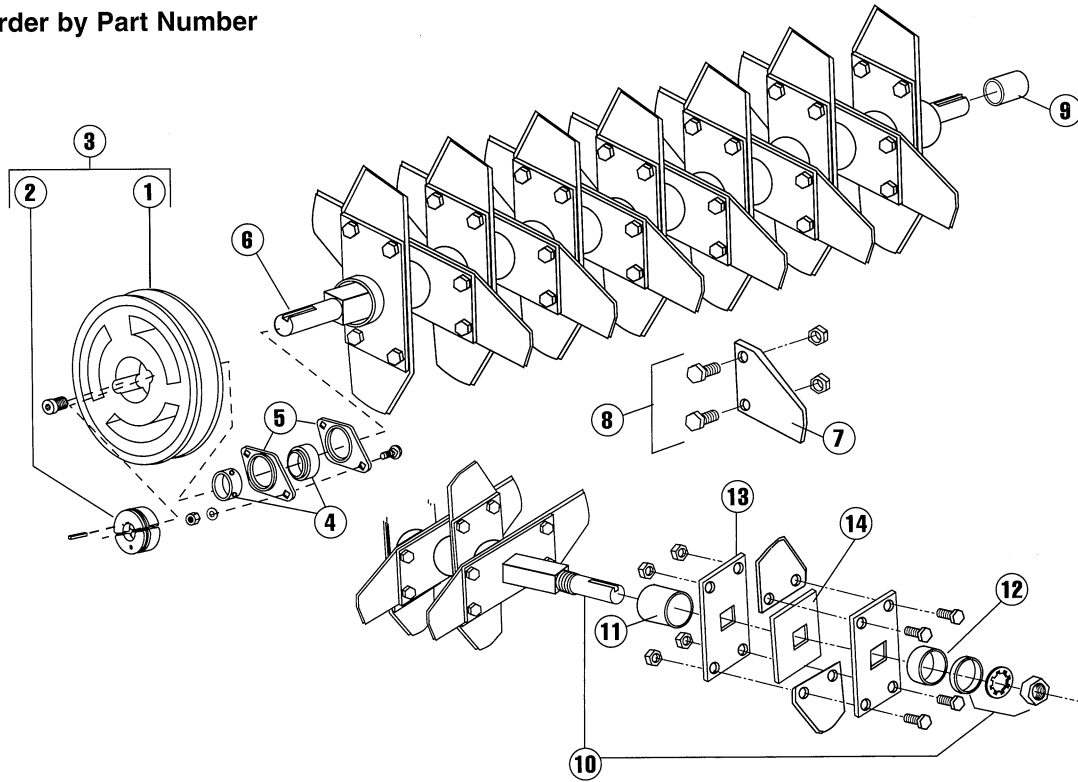
Delta Blade Wear

LAWN SEEDERS allow the rear wheels to be mounted in two separate positions.

After the Delta blade reaches 2¾" in length, remove the rear wheels and remount them to the top hole. Remember to move the rear wheels to bottom hole when mounting new blades.

Drawing Delta Reel

Please Order by Part Number



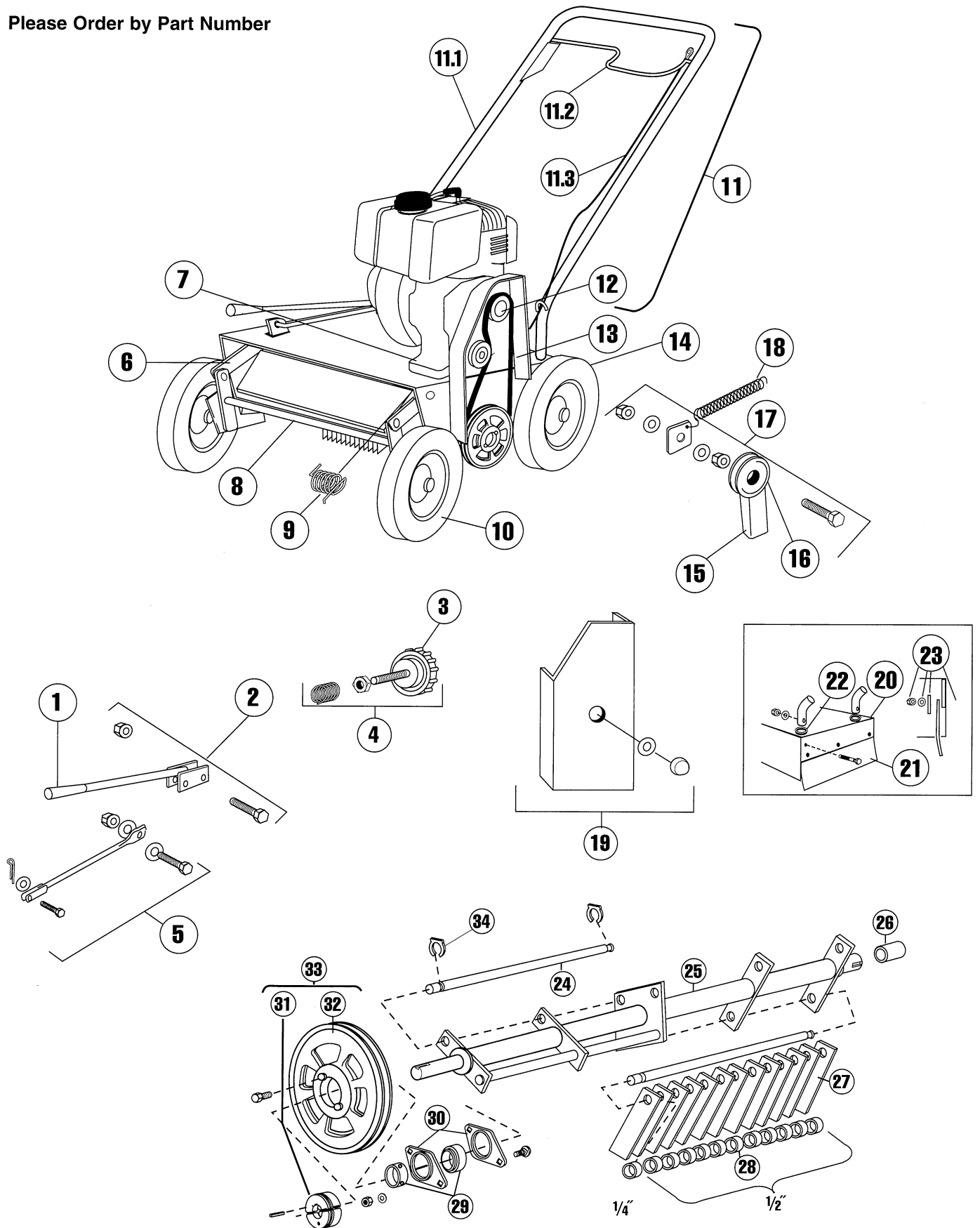
Parts Delta Reel

NOTE: Quantity refers to Quantity used in a complete machine

| Item No. | Part No. | Description | 205 |
|----------|----------|---|-----|
| 1 | T0349 | V-pulley, B-6.3" O.D. | 1 |
| 2 | T0347 | Bushing, 3/4" bore, with screws | 1 |
| 3 | T5169 | V-pulley, B-6.3" O.D. with 3/4" bushing | 1 |
| 4 | T0315 | Bearing, 3/4" with locking collar (1 each) | 2 |
| 5 | T5185 | Stamping kit for 3/4" bearing w/hardware (1 each) | 2 |
| 6 | T5049 | Delta reel assembly, without blades | 1 |
| | T5940 | Delta reel assembly complete without bearings | 1 |
| | T5942 | Delta reel assembly complete with bearings | 1 |
| 7 | T5970 | Blade, set, Delta, 20 ea. austempered | 1 |
| 8 | T5075 | Bolt kit, blade, 40 each with nuts | 1 |
| 9 | T5005 | Cap, plastic, 3/4" I.D. | 1 |
| 10 | T5061 | Shaft, Delta reel with nut and washer | 1 |
| 11 | T5064 | Spacer, carrier, steel tube (1 each) | 9 |
| 12 | T5065 | End ring, steel (1 each) | 2 |
| 13 | T5062 | Plate, blade carrier (1 each) | 20 |
| 14 | T5063 | Plate, blade spacer (1 each) | 10 |

Drawing 525 & 528 Dethatchers

Please Order by Part Number



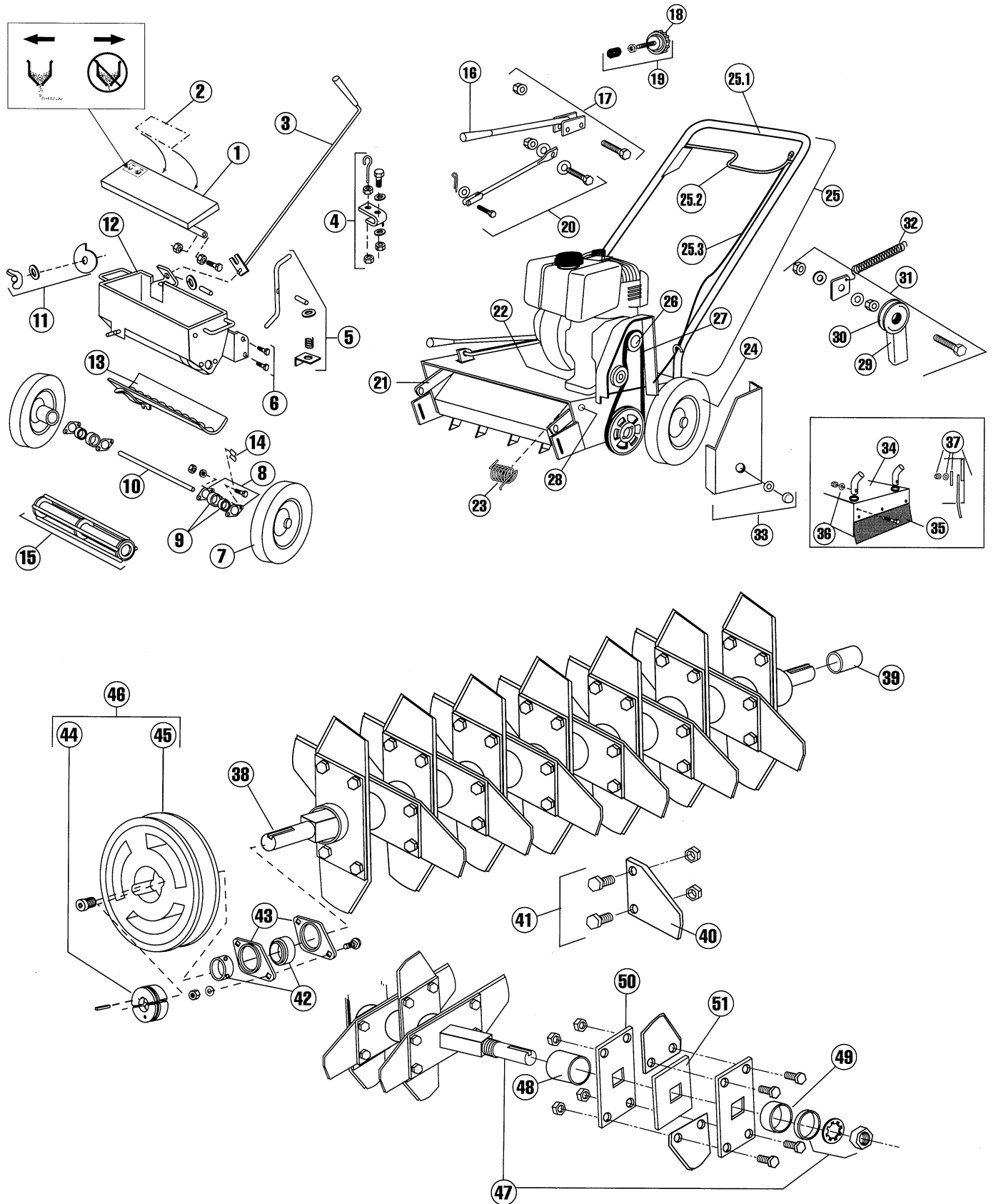
Parts 525 & 528 Dethatchers

NOTE: Quantity refers to Quantity used in a complete machine

| Item no. | Part no. | Description | 525 | 528 |
|----------|----------|---|-----|-----|
| 1 | T0026 | Knob, black plastic | 1 | 1 |
| 2 | T5145 | Lever kit, height adjustment with bolt, nut and washers | 1 | 1 |
| 3 | T5151 | Knob with screw | 1 | 1 |
| 4 | T5150 | Height adjustment kit | 1 | 1 |
| 5 | T5155 | Push rod kit with hardware | 1 | 1 |
| 6 | T5190 | Torque arm assembly, height adjustment, includes 5168 kit | 1 | 1 |
| | T5168 | Trunnion rod kit | 1 | 1 |
| 7 | T5193 | Plate, engine bolt, top (1 each) | 2 | 1 |
| | T5198 | Bolt kit engine | 1 | 1 |
| 8 | T5135 | Axle, front wheel | 1 | 1 |
| | T5164 | Pin kit, front axle, contains 2 ea. clevis pins, washers & cotter pins | 1 | 1 |
| 9 | T5154 | Spring, torsion | 1 | 1 |
| 10 | T5051 | Wheel, 8" x 1.75" semi-pneumatic, with ball bearing (1 each) | 2 | 2 |
| | T5052 | Bolt kit, wheel, front (1 each) | 2 | 2 |
| 11 | T5163 | Handle assembly, includes 5165 handle, 5171 clutch handle and 5089 clutch cable | 1 | 1 |
| 11.1 | T5165 | Handle, operator | 1 | 1 |
| 11.2 | T5171 | Clutch handle | 1 | 1 |
| 11.3 | T5089 | Clutch cable with hardware | 1 | 1 |
| 12 | T0330 | V-pulley, B-3" O.D. x ¾" bore | 1 | 1 |
| | T0331 | V-pulley, B-3" O.D. x 1" bore | | 1 |
| 13 | T0339 | V-belt, B-36" special | 1 | 1 |
| | T0340 | V-belt B-38" special | | 1 |
| | T5140 | Belt keeper kit, includes bolt, nut and washer | 1 | 1 |
| 14 | T5053 | Wheel, 10" x 2.75" semi-pneumatic with ball bearing (1 each) | 2 | 2 |
| | T5054 | Bolt kit, wheel, rear (1 each) | 2 | 2 |
| 15 | T5121 | Mounting arm, idler pulley | 1 | 1 |
| 16 | T0343 | Pulley, idler, 2¾" O.D. | 1 | 1 |
| 17 | T5027 | Pulley kit, idler includes 5121, 5129, 0343 and bolt, nuts and washers | 1 | 1 |
| 18 | T5129 | Spring, clutch rod | 1 | 1 |
| 19 | T5025 | Shield assembly, with washer and nut | 1 | 1 |
| 20 | T5110 | Housing weldment | 1 | 1 |
| 21 | T5161 | Deflector, Neoprene | 1 | 1 |
| 22 | T5167 | Bolt kit, handle | 1 | 1 |
| 23 | T5162 | Strap kit, with bolts, for deflector | 1 | 1 |
| 24 | T5002 | Shaft kit, 4 each with C clips | 1 | 1 |
| 25 | T5170 | Rotor, flail, without blades and shafts | 1 | 1 |
| | T5175 | Rotor assembly, complete without bearings | 1 | 1 |
| | T5180 | Rotor assembly, complete with bearings | 1 | 1 |
| 26 | T5005 | Cap, plastic, ¾" I.D. | 1 | 1 |
| 27 | T5001 | Blade set, flail, 52 each, ⅛" x 4" | 1 | 1 |
| | T5003 | Blade and shaft set, 5001 and 5002 in one package | 1 | 1 |
| 28 | T5004 | Spacer set, rubber, 48 each | 1 | 1 |
| 29 | T0315 | Bearing, ¾" with locking collar (1 each) | 2 | 2 |
| 30 | T5185 | Stamping kit, for ¾" bearing, with bolts, nuts and washers (1 each) | 2 | 2 |
| 31 | T0347 | Bushing, ¾" bore, with screws | 1 | 1 |
| 32 | T0349 | V-pulley, B-6.3" O.D., without bushing | 1 | 1 |
| 33 | T5169 | V-pulley, B-6.3" O.D. with ¾" bushing | 1 | 1 |
| 34 | T0351 | Retaining clip | 8 | 8 |
| | T8518 | Decal kit, 525 Dethatcher | 1 | 1 |
| | T8526 | Decal kit, 528 Dethatcher | | 1 |

*For Delta Reel Models, refer to sections 24 and 25

Please Order by Part Number



NOTE: Quantity refers to Quantity used in a complete machine

| Item no. | Part no. | Description | 205 |
|----------|----------|---|-----|
| 1 | T9117 | Cover assembly with decals and hardware | 1 |
| 2 | T9118 | Decal, seed application | 1 |
| 3 | T9213 | Control rod with knob and hardware | 1 |
| 4 | T9232 | Bracket, support with hardware for control rod | 1 |
| 5 | T9214 | Slide activator rod kit | 1 |
| 6 | T9216 | Bolt kit, seeder to unit | 1 |
| 7 | T9137 | Wheel, 10" x 1.75" fixed hub, with pin (1 each) | 2 |
| 8 | T9126 | Stamping kit, for 3/8" bearing, with bolts, nuts and washers (1 each) | 2 |
| 9 | T9127 | Bearing, 3/8" with locking collar (1 each) | 2 |
| 10 | T9125 | Axle, agitator with screw | 1 |
| 11 | T9121 | Dial, cam control with decal and nut | 1 |
| 12 | T9234 | Hopper, with decals | 1 |
| 13 | T9229 | Gate, slide | 1 |
| 14 | T9120 | Bracket, stop | 1 |
| 15 | T9130 | Agitator with screw | 1 |
| 16 | T0026 | Knob, black plastic | 1 |
| 17 | T5145 | Lever kit, height adjustment with bolt, nut and washers | 1 |
| 18 | T5151 | Knob with screw | 1 |
| 19 | T5150 | Height adjustment kit | 1 |
| 20 | T5155 | Push rod kit with hardware | 1 |
| 21 | T5190 | Torque arm assembly, height adjustment, includes 5168 kit | 1 |
| 22 | T5193 | Plate, engine bolt, top (1 each) | 2 |
| | T5198 | Bolt kit engine | 1 |
| 23 | T5154 | Spring, torsion | 1 |
| 24 | T5053 | Wheel, 10" x 1.75" semi-pneumatic, with ball bearing (1 each) | 2 |
| | T5054 | Bolt kit, wheel, rear (1 each) | 2 |
| 25 | T5163 | Handle assembly, includes 5165 handle, 5171 clutch handle and 5089 clutch cable | 1 |
| 25.1 | T5165 | Handle, operator | 1 |
| 25.2 | T5171 | Clutch handle | 1 |
| 25.3 | T5089 | Clutch cable with hardware | 1 |
| 26 | T0330 | V-pulley, B-3" O.D. x 3/4" bore | 1 |
| | T0331 | V-pulley, B-3" O.D. x 1" bore | |
| 27 | T0339 | V-belt, B-36" special | 1 |
| | T0340 | V-belt B-38" special | |
| | T5140 | Belt keeper kit, includes bolt, nut and washer | 1 |
| 28 | T5168 | Trunion rod kit | 1 |
| 29 | T5121 | Mounting arm, idler pulley | 1 |
| 30 | T0343 | Pulley, idler, 2 3/4" O.D. | 1 |
| 31 | T5027 | Pulley kit, idler includes 5121, 5129, 0343 and bolt, nuts and washers | 1 |
| 32 | T5129 | Spring, clutch rod | 1 |
| 33 | T5025 | Shield assembly, with washer and nut | 1 |
| 34 | T5110 | Housing weldment | 1 |
| 35 | T5161 | Deflector, Neoprene | 1 |
| 36 | T5167 | Bolt kit, handle | 1 |
| 37 | T5162 | Strap kit, with bolts, for deflector | 1 |
| 38 | T5049 | Delta reel assembly, without blades | 1 |
| | T5940 | Delta reel assembly complete without bearings | 1 |
| | T5942 | Delta reel assembly, complete with bearings | 1 |
| 39 | T5005 | Cap, plastic, 3/4" I.D. | 1 |
| 40 | T5970 | Blade set, Delta, 20 ea., austempered | 1 |
| 41 | T5075 | Bolt kit, blade, 40 ea. with nuts | 1 |
| 42 | T0315 | Bearing, 3/4" with locking collar (1 each) | 2 |
| 43 | T5185 | Stamping kit, for 3/4" bearing, with bolts, nuts and washers (1 each) | 2 |
| 44 | T0347 | Bushing, 3/4" bore, with screws | 1 |
| 45 | T0349 | V-pulley, B-6.3" O.D., without bushing | 1 |
| 46 | T5169 | V-pulley, B-6.3" O.D. with 3/4" bushing | 1 |
| 47 | T5061 | Shaft, Delta reel with nut and washers | 1 |
| 48 | T5064 | Spacer, carrier, steel tube (1 each) | 9 |
| 49 | T5065 | End ring, steel (1 each) | 2 |
| 50 | T5062 | Plate, blade carrier (1 each) | 20 |
| 51 | T5063 | Plate, blade spacer (1 each) | 10 |
| | T8523 | Decal kit, seeder attachment | 1 |
| | T8528 | Decal kit, seeder | 1 |

Toro Total Coverage Guarantee

A One-Year Limited Warranty (A Two-Year Full Warranty for Residential Use)

What is Covered By This Express Warranty?

The Toro Company promises to repair any TORO product used for commercial, institutional, or rental purposes if defective in materials or workmanship for a period of one year from the date of purchase. The cost of parts and labor are included, but the customer pays the transportation cost. Transportation within a 15-mile radius of a TORO ProLine Service Dealer is covered under this warranty for Riding Products, Mid-size Mowers and Turf Maintenance Equipment.

What Products Are Covered By This Warranty?

The following products and their attachments are covered by this warranty:

- Z-Master Zero Radius Tractors
- ProLine Mid-size Mowers
- Groundsmaster Riding Mowers
- ProLine Hand-held Gas Products
- Backpack Blowers
- Commercial WPM
- Turf Maintenance Equipment
- Debris Management Equipment

How About Residential Use?

TORO products used for residential use are covered by a full two-year warranty.

How Do You Get Warranty Service?

Should you feel your TORO product contains a defect in materials or workmanship, contact the dealer who sold you the product or any TORO ProLine Service Dealer. The Yellow Pages of your telephone directory is a good reference source; look under TORO Commercial Service Dealers. The Service Dealer will either arrange

service at his/her dealership or recommend another authorized Service Dealer who may be more convenient. You may need proof of purchase (copy of registration card, sales receipt, etc.) for warranty validation.

If for any reason you are dissatisfied with a Service Dealer's analysis of the defect in materials or workmanship or if you need a referral to a TORO ProLine Service Dealer, please feel free to contact us at the following address:

Toro Customer Service Department
8111 Lyndale Avenue South
Bloomington, MN 55420-1196
612-888-8801 or 800-348-2424

What Must You Do To Keep The Warranty In Effect?

You must maintain your TORO Product by following the maintenance procedures described in the operator's manual. Such routine maintenance, whether performed by a dealer or by you, is at your own expense.

What Does This Warranty Not Cover? and

How Does Your State Law Relate To This Warranty?

There is no other express warranty except as described above. This express warranty does not cover:

- Cost of regular maintenance service or parts, such as filters, fuel, lubricants, tune-up parts, blade sharpening, brake and clutch adjustments.
- Any product or part which has been altered or misused or required replacement or repair due to normal wear, accidents, or lack of proper maintenance.

- Repairs necessary due to improper fuel, contaminants in the fuel system, or failure to properly prepare the fuel system prior to any period of non-use over three months.
- Pickup and delivery charges for distances beyond a 15-mile radius from a TORO ProLine Service Dealer.

All repairs covered by this warranty must be performed by a TORO Service Dealer using Toro approved replacement parts.

The Toro Company is not liable for indirect or consequential damages in connection with the use of the TORO Products covered by this warranty, including any cost or expense of providing substitute equipment or service during reasonable periods of malfunction or non-use pending completion of repairs under this warranty. Some states do not allow exclusions of incidental or consequential damages, so the above exclusion may not apply to you.

This warranty gives you specific legal rights, and you may also have other rights which vary from state to state.

Countries other than the United States or Canada

Customers who have purchased TORO products exported from the United States or Canada should contact their TORO Distributor (Dealer) to obtain guarantee policies for your country, province, or state. If for any reason you are dissatisfied with your Distributor's service or have difficulty obtaining guarantee information, contact the TORO importer. If all other remedies fail, you may contact us at The Toro Company.

Sound

Sound Test

L_{wa}
103

Sound test conducted was in accordance with 79/113/EEC and was performed on 8 March 95 under the conditions listed.

L_{pA}
93
OPERATOR

General Condition: Partly Cloudy

Temperature: 52°F (11.1°C)

Wind Speed: 10 MPH (8kmh)

Wind Direction: S.W.

Humidity: 50%

Barometric Pressure: 29.9" Hg (759mm Hg)

Vibration

Vibration Level

1.0g

Vibration levels at the operators handles were measured in the vertical, lateral, and longitudinal directions using calibrated vibration test equipment.

Tests were performed on 6 March 95 under the conditions listed:

General Condition: Partly Cloudy

Temperature: 52°F (11.1°C)

Wind Speed: 10 MPH (8kmh)

Humidity: 50%

Barometric Pressure: 29.9" Hg (759mm Hg)

Please Fill in Your Purchase

Model Number: _____

Serial Number: _____

Purchase Date: _____



Toro

8111 Lyndale Avenue South
Bloomington, MN 55420-1196
612-888-8801, 800-348-2424