



FUEL GAUGE KIT

for Z-Master 320/325

PART NO. 98-1325

INSTALLATION
INSTRUCTIONS

Loose Parts

Note: Use the chart below to identify parts used for assembly.

DESCRIPTION	QTY.	USE
Gauge	1	Install fuel gauge
Gasket	1	
Screw 8-32 x 5/8" (16 mm)	5	

DANGER

POTENTIAL HAZARD

- In certain conditions gasoline is extremely flammable and highly explosive.

WHAT CAN HAPPEN

- A fire or explosion from gasoline can burn you, others, and cause property damage.

HOW TO AVOID THE HAZARD

- Install fuel gauge outdoors, in an open area, when the engine is cold. Wipe up any gasoline that spills.
- Do not install fuel gauge with fuel level above bottom of fuel filler neck.
- Never smoke when handling gasoline, and stay away from an open flame or where gasoline fumes may be ignited by a spark.

Install Fuel Gauge

1. Shut off engine and wait for all moving parts to stop. Remove spark plug wire(s).



CAUTION

POTENTIAL HAZARD

- If you leave the wire on the spark plug, someone could start the engine.

WHAT CAN HAPPEN

- Accidental starting of engine could seriously injure you or other bystanders.

HOW TO AVOID THE HAZARD

- Pull wire off spark plug before you do any maintenance. Also push wire aside so it does not accidentally contact spark plug.

2. Remove screws, cover plate and gasket from fuel tank opening (Fig. 1). Discard these pieces.

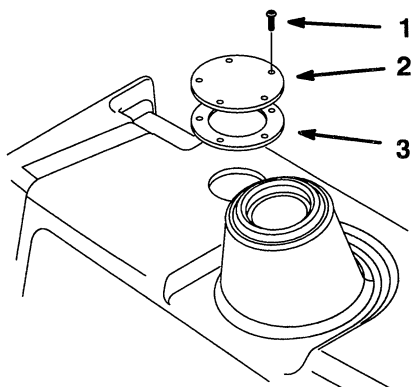


Figure 1

1. Screw
2. Plate
3. Gasket

3. Place gasket over tank opening and rotate so screw hole align with openings (Fig. 2).

Note: The holes are not equally spaced around the diameter.

4. Lower the float arm and place through the gasket and tank opening with float toward the rear of the tank (Fig. 2).
5. Align gauge, gasket and tank screw holes. Secure gauge to tank with (5) 8-32 x 5/8" (16 mm) screws (Fig. 2). Tighten screws securely.

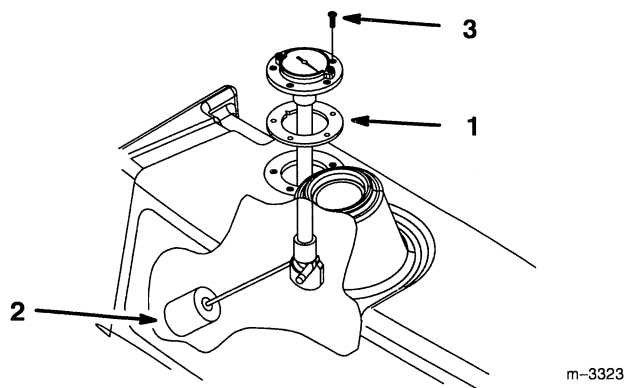


Figure 2

1. Gasket
2. Float arm
3. Screw 8-32 x 5/8" (16 mm)