



**Count on it.**

# Parts Catalog

## **Flex™ Groomer Kit**

**QAS Nail Drag for Sand Pro®/Infield Pro®  
3040 or 5040 Traction Unit**

**Model No. 08762—Serial No. 314000001 and Up**



# Ordering Replacement Parts

To order replacement parts, please supply the part number, the quantity, and the description of each part desired.

## Understanding Reference Numbers

Each identified part in an illustration has a reference number. The reference number for a part also appears in the parts list, along with other information about the part.

This catalog uses two special reference number formats, one to indicate parts in a service assembly and another to indicate the quantity of a given part in an illustration.

## Service Assembly Reference Numbers

Parts in service assemblies have reference numbers in the form a:b. The a represents the reference number of the entire service assembly and the b represents a sequential number unique to each part within the service assembly.

For example, a wheel assembly might be identified by reference number 6, the tire by 6:1, the valve by 6:2, and the wheel by 6:3. When you order the assembly identified by reference number 6, you receive all parts identified by reference numbers 6:1, 6:2, and 6:3. However, you may also order any part individually. Reference numbers of this type appear in illustration and in parts lists.

## Reference Numbers Indicating Quantity

In an illustration, if a reference number indicates more than one part, the reference number has the form nX y. The n represents the quantity of the part, the X is the multiplication symbol, and the y represents the reference number.

For example, in an illustration, the reference number 2X 37 means that two of the parts identified by reference number 37 are indicated.

# List of Abbreviations

**AR:** as required

**ASM:** assembly

**BBC:** blade brake control

**BHTF:** button head thread forming

**CARR:** carriage

**CCW:** counter clockwise

**CW:** clockwise

**DEG:** degrees

**DPA:** Dual Point Adjustment

**ECM:** electronic control module

**EXT:** external

**FH:** flat head

**GA:** gauge

**HD:** heavy-duty

**HF:** hex flange

**HH:** hex head

**HHF:** hex head flange

**HHFTF:** hex head flange thread forming

**HJ:** hex jam

**HLH:** hex lag head

**HOC:** height-of-cut

**HP:** high pressure

**HSBH:** hex socket button head

**HSFH:** hex socket flat head

**HSH:** hex socket head

**HWH:** hex washer head

**HWHTF:** hex washer head thread forming

**HYD:** hydraulic

**LH:** left hand

**LP:** low pressure

**LPG:** Liquefied Petroleum Gas

**NI:** nylon insert

**NPTF:** national pipe thread fine

**PFH:** phillips flat head

**PPH:** phillips pan head

**PPHTF:** phillips pan head thread forming

**PRH:** phillips round head

**PTH:** phillips truss head

**PTO:** power-take-off

**RH:** right hand

**ROPS:** roll-over protection system

**RRB:** rear roller brush

**SFH:** slotted fillister head

**SHH:** slotted hex head

**SHWH:** slotted hex washer head

**SPH:** slotted pan head

**SQH:** square head

**SRH:** slotted round head

**STD:** standard

**TAP:** self tapping

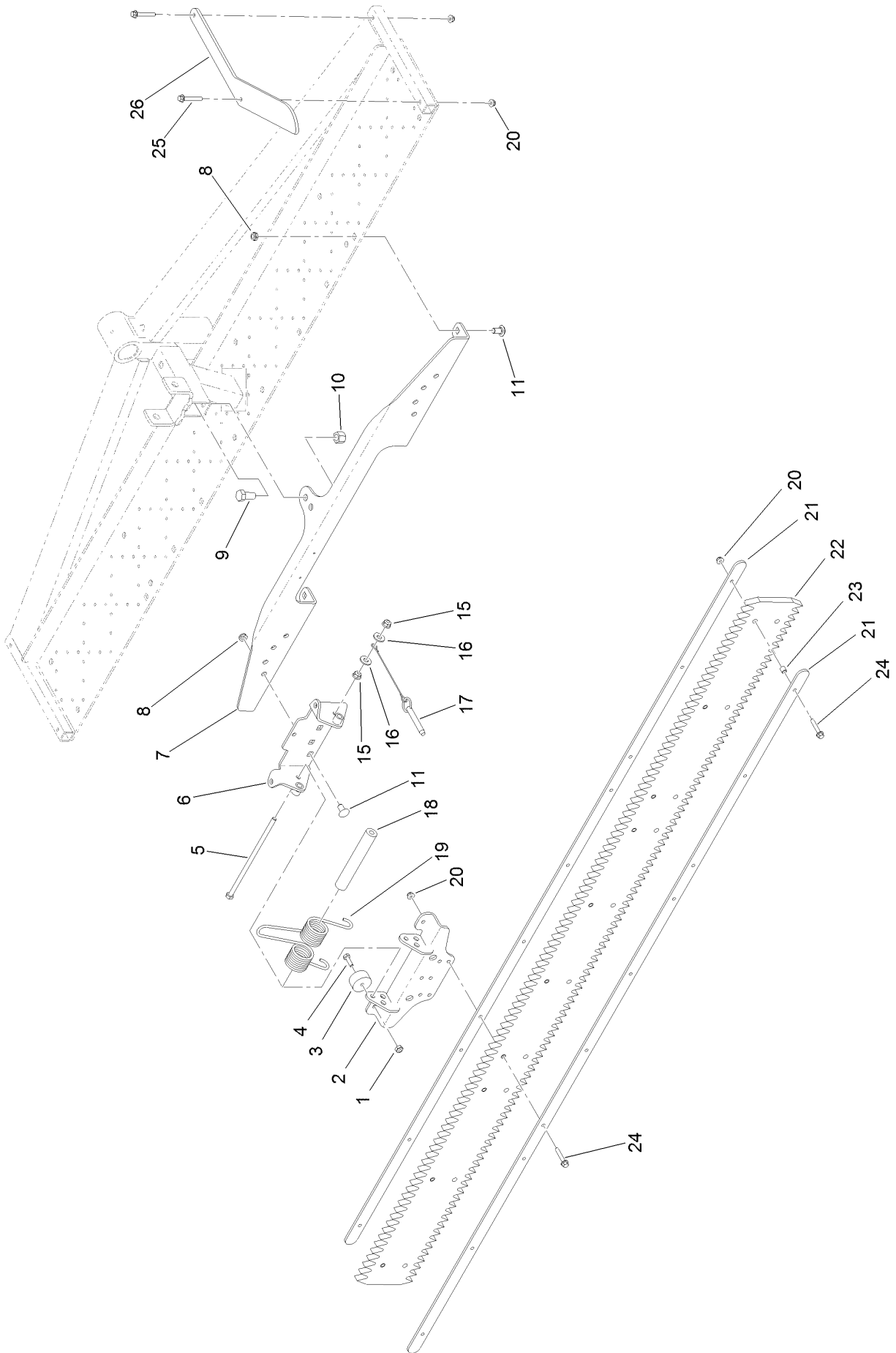
**TTH:** torx truss head

# Contents

Flex Groomer Assembly ..... 4

Attachments and Accessories ..... 6

# Flex Groomer Assembly



## Flex Groomer Assembly (continued)

<i>Ref.</i>	<i>Part Number</i>	<i>Qty.</i>	<i>Description</i>	<i>Ref.</i>	<i>Part Number</i>	<i>Qty.</i>	<i>Description</i>
1	3296-16	4	Nut-Lock, NI	16	3256-3	4	Washer-Flat
2	127-4131-03	2	Bracket-Groomer	17	130-7825	2	Pin-Clevis
3	94-4548	4	Bumper-Recessed	18	105-4622	2	Spacer
4	321-5	4	Screw-HH	19	121-2368	2	Spring-Torsion
5	112-9557	2	Screw-HH	20	104-7201	14	Nut-HF
6	130-7804-03	2	Nail Drag Bracket ASM	21	125-5145-03	2	Strap-Support, Rubber
7	121-9097-03	1	Bracket-Mount, Trowel	22	127-4123	1	Trowel-Rubber
8	3296-59	12	Nut-Lock, NI	23	130-7842	10	Spacer
9	325-4	1	Screw-HH	24	94-5781	10	Screw-HHF
10	3296-23	1	Nut-Lock, NI	25	32105-18	4	Screw-HHF
11	3231-21	12	Screw-CARR	26	130-7865-01	2	Bracket-Tattletale
15	104-8300	4	Nut-Flange, NI				

# Attachments and Accessories

For 08762 Flex Groomer Kit QAS Nail Drag for Sand Pro/Infield Pro 3040 or 5040 Traction Unit

Product Name	Model/Part
Weight Kit .....	100-6442
Magnet Pickup Kit.....	119-2827

**Notes:**



**Count on it.**