



# Pivoting Hose Reel Kit

## 2015 and After Multi-Pro 5800 Turf Sprayer

Model No. 41621—Serial No. 315000001 and Up

### Operator's Manual

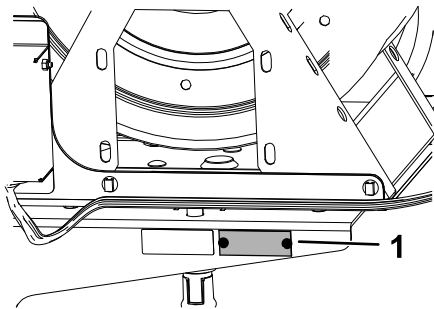
**Note:** For models built in 2014 or before, the Pivoting Hose Reel Finishing Kit is needed.

## Introduction

Read this manual carefully to learn how to operate and maintain your product properly. The information in this manual can help you and others avoid injury and product damage. Although Toro designs and produces safe products, you are responsible for operating the product properly and safely.

You may contact Toro directly at [www.Toro.com](http://www.Toro.com) for product safety and operation training materials, accessory information, help finding a dealer, or to register your product.

Whenever you need service, genuine Toro parts, or additional information, contact an Authorized Service Dealer or Toro Customer Service and have the model and serial numbers of your product ready. Figure 1 illustrates the location of the model and serial numbers on the product.



g028037

**Figure 1**

1. Model and serial number plate

Model No. \_\_\_\_\_

Serial No. \_\_\_\_\_

### ⚠ WARNING

#### CALIFORNIA

#### Proposition 65 Warning

This product contains a chemical or chemicals known to the State of California to cause cancer, birth defects, or reproductive harm.

Use of this product may cause exposure to chemicals known to the State of California to cause cancer, birth defects, or other reproductive harm.

**Note:** This product complies with all relevant European directives. For details, please see the Declaration of Incorporation (DOI) at the back of this publication. Determine the left and right sides of the machine from the normal operating position.

**Important:** PTFE tape is required for the installation of this kit.

**Important:** You will need a non-petroleum-based lubricant, such as vegetable oil, to install this kit.

## Safety

Improper use or maintenance by the operator or owner can result in injury. To reduce the potential for injury, comply with these safety instructions and always pay attention to the safety alert symbol, which means Caution, Warning, or Danger—personal safety instruction. Failure to comply with the instruction may result in personal injury or death.

Read also the safety and operation instructions in the vehicle *Operator's Manual*.

- Do not aim the hand sprayer at any person or animal. Fluids under high pressure can penetrate skin and cause severe injury, possibly resulting in amputation or death. Hot liquids and chemicals can also cause burns or injury. If any part of the body comes in contact with the spray stream, immediately consult a physician familiar with injected fluid injuries.
- Do not place your hand or any other part of your body in front of the spray nozzle.



- Do not leave the equipment under pressure when you are not present.
- Do not use the hand sprayer if the hose, trigger lock, nozzle, or any other part is damaged or missing.
- Do not use the hand sprayer if there are any leaks in any hoses, fittings, or other components.
- Do not spray near power lines.
- Do not drive while spraying with a hand sprayer.
- Wear rubber gloves, safety goggles, and a full body protective suit when spraying chemicals with the hand sprayer.
- Lightning can cause severe injury or death. If lightning is seen or thunder is heard in the area, do not operate the machine; seek shelter.

## ⚠ CAUTION

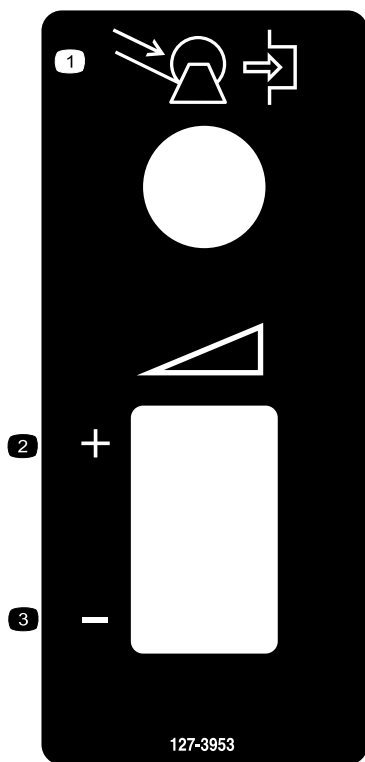
Chemicals are hazardous and can cause personal injury.

- Read the directions on the chemical labels before handling the chemicals and follow all manufacturer recommendations and precautions.
- Keep chemicals away from your skin. Should contact occur, wash the affected area thoroughly with soap and clean water.
- Wear goggles and any other protective equipment recommended by the chemical manufacturer.

## Safety and Instructional Decals



Safety decals and instructions are easily visible to the operator and are located near any area of potential danger. Replace any decal that is damaged or lost.



**127-3953**

1. To retract the hose reel, engage the button.
2. Increase spray rate
3. Decrease spray rate

# Setup

## Loose Parts

Use the chart below to verify that all parts have been shipped.

Procedure	Description	Qty.	Use
<b>1</b>	No parts required	–	Prepare the machine.
<b>2</b>	Nut (1/4-20 inch) Flange nut (5/16-18 inch) Flange nut (3/8-16 inch) Bolt (3/8-16 x 1 inch) Bolt (1/4-20 x 3/4 inch) Bolt (3/8-16 inch) Bolt (3/8-16 x 3 1/2 inch) Upper bracket Lower-bracket support Lower bracket Whiz bolt (5/16-18 x 1 inch, GR5) U-Bolt Bolt (3/8-16 x 2 1/4 inch) Reel-shelf support bracket Shoulder bolt Reel shelf frame Jam nut (5/16-18 inch) Bolt (5/16-18 x 1 inch, GR5) Pressure gauge reducer Coupler Pressure Gauge	1 5 12 5 1 2 2 1 1 1 1 1 2 1 4 1 2 2 1 1 1	Install the hose-reel frame.
<b>3</b>	Wiring harness Switch box assembly Thrust washer Snap ring Hose reel assembly Spring pin Washer (7/16 inch) Flange nut (5/16-18 inch) Bolt (5/16-18 x 1/4 inch, GR5) Washer Flange nut (3/8-16 inch) Bolt (3/8-16 inch)	1 1 1 1 1 1 4 2 2 1 4 4	Install the switch box and hose reel.

Procedure	Description	Qty.	Use
<b>4</b>	Control valve	1	Install the control valve.
	T-fitting	1	
	Hose clamp	1	
	Cable tie	3	
	R-clamp	1	
	Hose (71 inches)	1	
	Clamp	1	
	90-degree fitting	1	
	Tube coupler	1	
	Nut (1/4-20 inch)	1	
	Flange nut (3/8-16 inch)	1	
	Pressure transducer wire	1	
	Bolt (1/4-20 x 3/4 inch)	1	
<b>5</b>	Spray-gun hose with fitting	1	Connect the spray hose.
	Spray gun	1	
	Small hose clamp	1	

# 1

## Preparing the Machine

### No Parts Required

### Procedure

1. Ensure that the machine is empty of all fluids.  
**Note:** If chemicals have been used in the machine, flush the system thoroughly with clean water; refer to your vehicle *Operator's Manual* for instructions.
2. Park the machine on a flat area, set the parking brake, stop the pump, stop the engine, and remove the ignition key.
3. Disconnect the negative battery terminal from the battery.

# 2

## Installing the Hose-Reel Frame

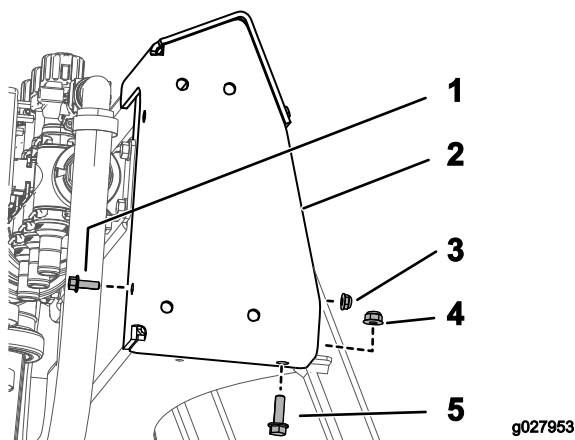
### Parts needed for this procedure:

1	Nut (1/4-20 inch)
5	Flange nut (5/16-18 inch)
12	Flange nut (3/8-16 inch)
5	Bolt (3/8-16 x 1 inch)
1	Bolt (1/4-20 x 3/4 inch)
2	Bolt (3/8-16 inch)
2	Bolt (3/8-16 x 3 1/2 inch)
1	Upper bracket
1	Lower-bracket support
1	Lower bracket
1	Whiz bolt (5/16-18 x 1 inch, GR5)
1	U-Bolt
2	Bolt (3/8-16 x 2 1/4 inch)
1	Reel-shelf support bracket
4	Shoulder bolt
1	Reel shelf frame
2	Jam nut (5/16-18 inch)
2	Bolt (5/16-18 x 1 inch, GR5)
1	Pressure gauge reducer
1	Coupler
1	Pressure Gauge

### Procedure

If the machine has a Clean Rinse Kit installed, it may be necessary to remove the rinse tank before installing the upper bracket.

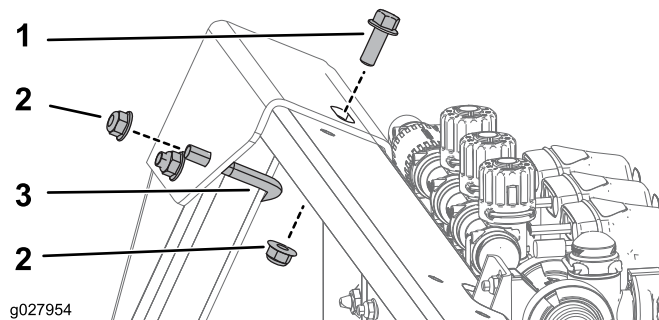
1. Mount the upper bracket using 1 bolt (1/4-20 x 3/4 inch), 1 nut (1/4-20 inch), 1 whiz bolt (5/16-18 x 1 inch, GR5), and 1 flange nut (5/16-18 inch) as shown in [Figure 2](#).



**Figure 2**

- |                             |                                      |
|-----------------------------|--------------------------------------|
| 1. Bolt (1/4-20 x 3/4 inch) | 4. Flange nut (5/16-18 inch)         |
| 2. Upper bracket            | 5. Whiz bolt (5/16-18 x 1 inch, GR5) |
| 3. Nut (1/4-20 inch)        |                                      |

- Secure the back side of the upper bracket using 1 U-bolt, 1 bolt (3/8-16 x 1 inch, GR5), and 3 flange nuts (3/8-16 inch) as shown in [Figure 3](#).

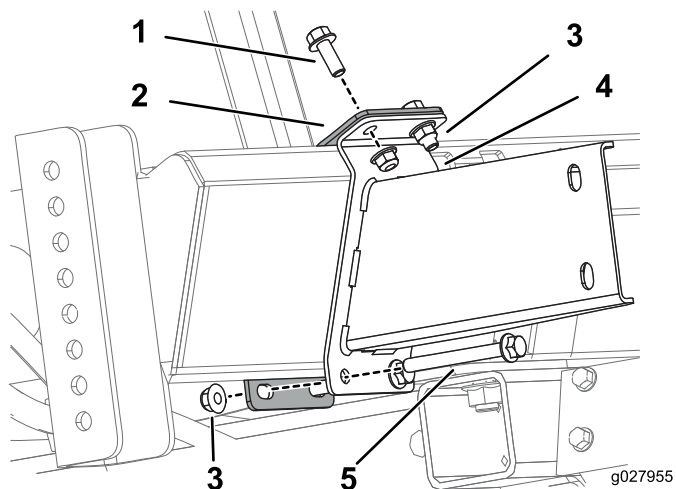


**Figure 3**

- |                                |           |
|--------------------------------|-----------|
| 1. Bolt (3/8-16 x 1 inch, GR5) | 3. U-bolt |
| 2. Flange nut (3/8-16 inch)    |           |

**Note:** If a rinse tank was removed before installing the upper bracket, install the rinse tank before proceeding to the next step.

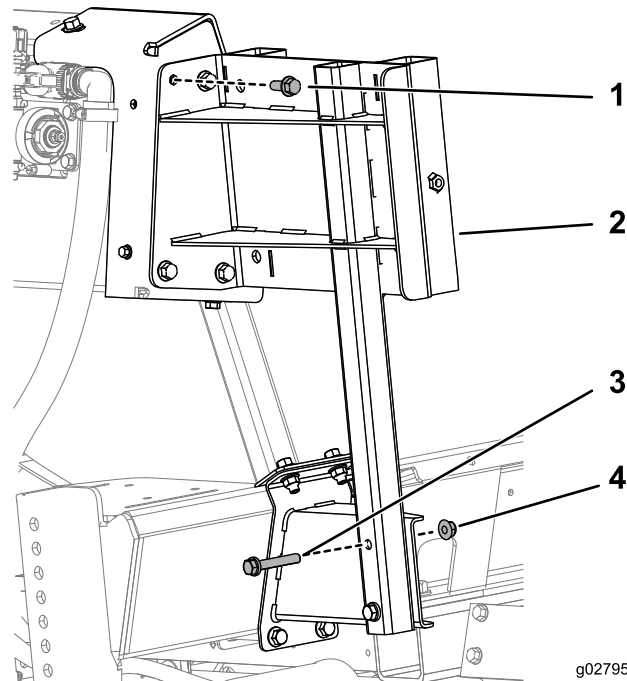
- Mount the lower bracket and lower support bracket to the frame using 2 bolts (3/8-16 inch), 2 bolts (3/8-16 x 3 1/2 inch), and 4 flange nuts (3/8-16 inch) as shown in [Figure 4](#).



**Figure 4**

- |                             |                               |
|-----------------------------|-------------------------------|
| 1. Bolt (3/8-16 inch)       | 4. Lower bracket              |
| 2. Lower support bracket    | 5. Bolt (3/8-16 x 3 1/2 inch) |
| 3. Flange nut (3/8-16 inch) |                               |

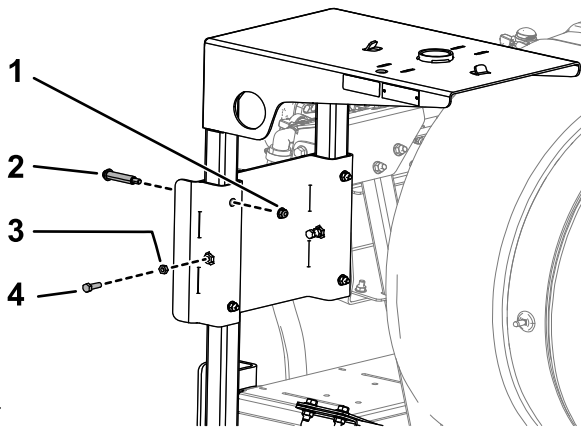
- Secure the reel-shelf support bracket to the upper and lower brackets using 4 bolts (3/8-16 x 1 inch, GR5), 2 bolts (3/8-16 x 2 1/4 inch), and 6 flange nuts (3/8-16 inch) as shown in [Figure 5](#).



**Figure 5**

- |                                |                               |
|--------------------------------|-------------------------------|
| 1. Bolt (3/8-16 x 1 inch, GR5) | 3. Bolt (3/8-16 x 2 1/4 inch) |
| 2. Reel-shelf support bracket  | 4. Flange nut (3/8-16 inch)   |

- Insert the reel shelf frame into the slots onto the reel-shelf support bracket and secure the shelf using 4 shoulder bolts, 4 flange nuts (5/16-18 inch), 2 bolts (5/16-18 x 1 inch, GR5), and 2 jam nuts (5/16-18 inch) as shown in [Figure 6](#).

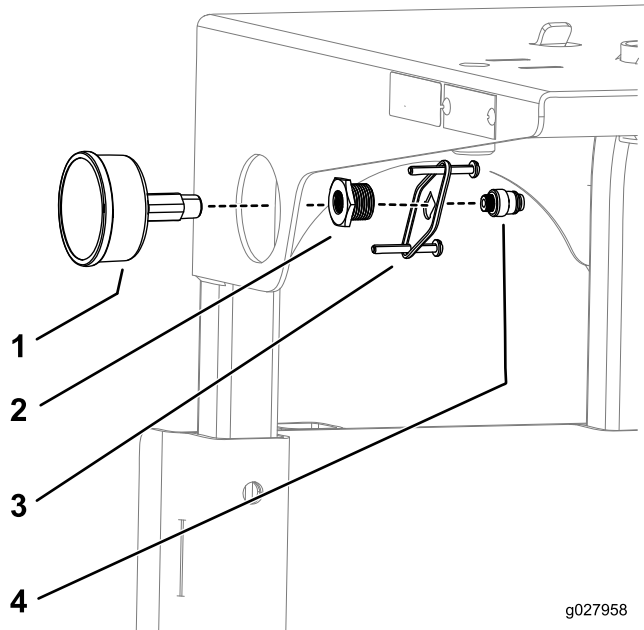


g027957

**Figure 6**

- |                              |                                 |
|------------------------------|---------------------------------|
| 1. Flange nut (5/16-18 inch) | 3. Jam nut (5/16-18 inch)       |
| 2. Shoulder bolt             | 4. Bolt (5/16-18 x 1 inch, GR5) |

6. Apply PTFE tape to the threads on the pressure gauge and install the pressure gauge assembly as shown in [Figure 7](#).



g027958

**Figure 7**

- |                           |  |
|---------------------------|--|
| 1. Pressure gauge         | 3. Pressure gauge support bracket assembly |
| 2. Pressure gauge reducer | 4. Coupler                                 |

7. Tighten the bolts on the pressure-gauge support bracket against the reel-shelf frame.

# 3

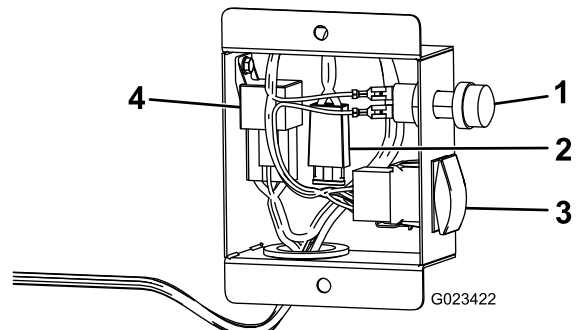
## Installing the Switch Box and Hose Reel

### Parts needed for this procedure:

1	Wiring harness
1	Switch box assembly
1	Thrust washer
1	Snap ring
1	Hose reel assembly
1	Spring pin
4	Washer (7/16 inch)
2	Flange nut (5/16-18 inch)
2	Bolt (5/16-18 x 1/4 inch, GR5)
1	Washer
4	Flange nut (3/8-16 inch)
4	Bolt (3/8-16 inch)

### Procedure

**Note:** The fuse for the hose-reel motor is located in the switch box ([Figure 8](#)).

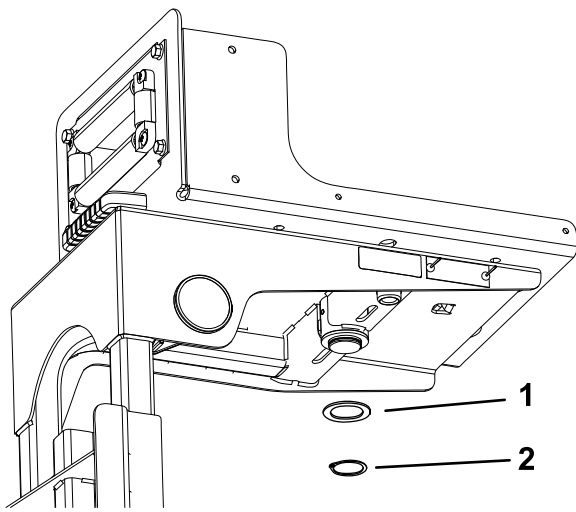


G023422

**Figure 8**

- |                     |                |
|---------------------|----------------|
| 1. Hose-reel button | 3. Rate switch |
| 2. Fuse             | 4. Power relay |

- Drop the swivel plate into the hole on the hose-reel base.
- On the underside of the hose-reel frame, attach the thrust washer and snap ring to the post on the swivel plate ([Figure 9](#)).

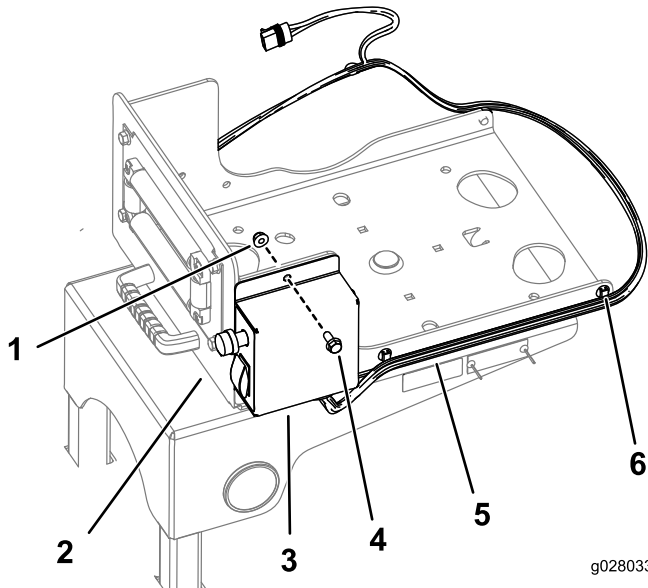


g028032

**Figure 9**

1. Thrust washer
2. Snap ring

3. Mount the switch box to the swivel plate using 2 bolts (5/16-18 x 1/4 inch, GR5) and 2 flange nuts (5/16-18 inch) as shown in [Figure 10](#).



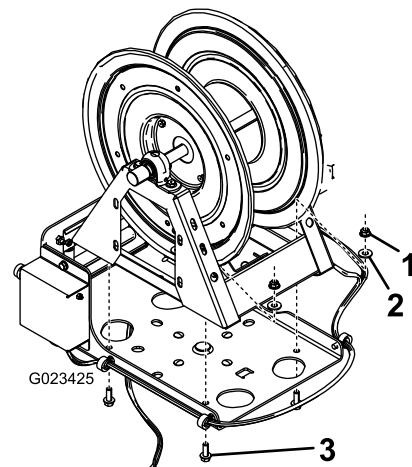
g028033

**Figure 10**

1. Flange nut
2. Swivel plate
3. Bolt
4. Switch box
5. Wiring harness
6. Wiring-harness clip

4. Secure the wiring harness to the sides of the swivel plate using the existing clips ([Figure 10](#)).
5. Secure the hose reel to the swivel plate using 4 bolts (3/8-16 inch), 4 washers (7/16 inch), and 4 flange nuts (3/8-16 inch) as shown in [Figure 11](#).

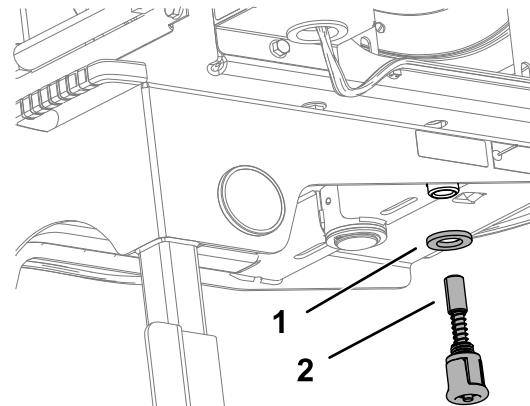
**Note:** The hose-reel motor should face away from the switch panel.



**Figure 11**

1. Flange nut (3/8-16 inch)
2. Washer (7/16 inch)
3. Bolt (3/8-16 inch)

6. Install the washer and spring pin to the underside of the hose-reel frame ([Figure 12](#)).



g028034

**Figure 12**

1. Washer
2. Spring pin

7. Connect the remaining wiring harness plugs to the motor, the main harness power, and the hose reel kit plugs.



# 4

## Installing the Control Valve

### Parts needed for this procedure:

1	Control valve
1	T-fitting
1	Hose clamp
3	Cable tie
1	R-clamp
1	Hose (71 inches)
1	Clamp
1	90-degree fitting
1	Tube coupler
1	Nut (1/4-20 inch)
1	Flange nut (3/8-16 inch)
1	Pressure transducer wire
1	Bolt (1/4-20 x 3/4 inch)

### Procedure

1. Disconnect the cap and coupler from the pressure-gauge port (Figure 13).

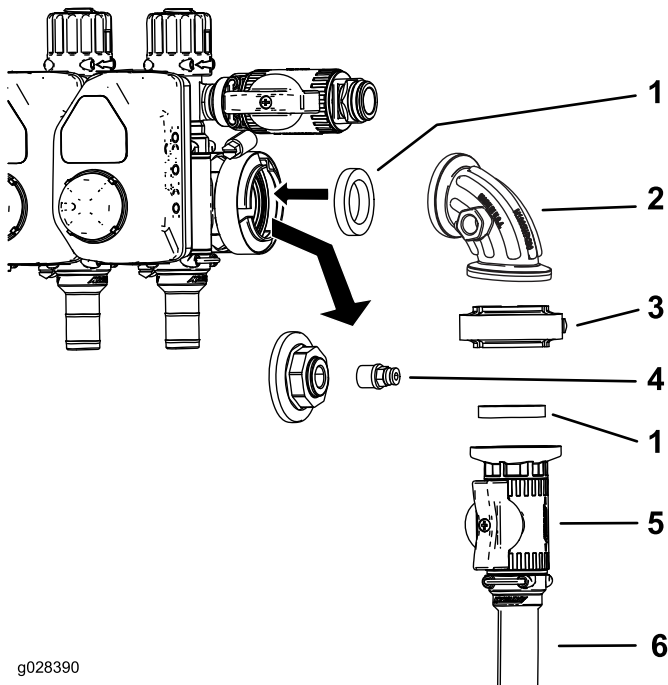


Figure 13

- |                      |                          |
|----------------------|--------------------------|
| 1. Gasket            | 4. Coupler               |
| 2. 90-degree fitting | 5. Control valve         |
| 3. Clamp             | 6. Hose-reel supply hose |

2. Install the control valve assembly as shown in Figure 13.
3. Install the coupler into the open port on the 90-degree fitting (Figure 13 and Figure 14).

**Note:** The cap can be discarded.

4. Connect the hose-reel supply hose to the control valve using a hose clamp (Figure 13).
5. Secure the hose (71 inches) to the upper bracket using a R-clamp, 1 bolt (1/4-20 x 3/4 inch), and 1 nut (1/4-20 inch) as shown in Figure 14.

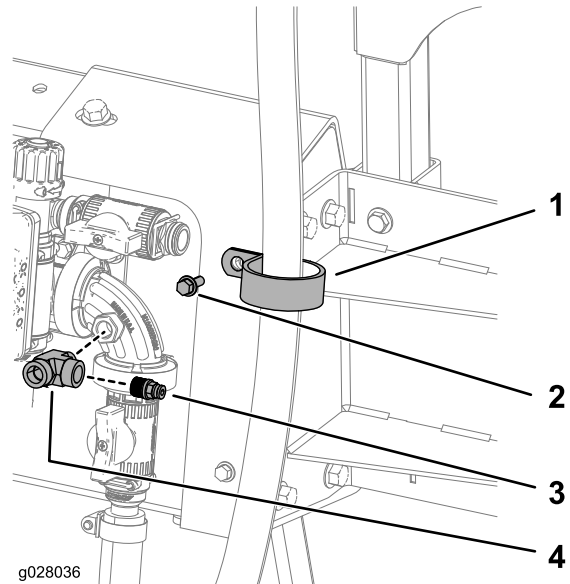


Figure 14

- |            |              |
|------------|--------------|
| 1. R-clamp | 3. Coupler   |
| 2. Bolt    | 4. T-Fitting |

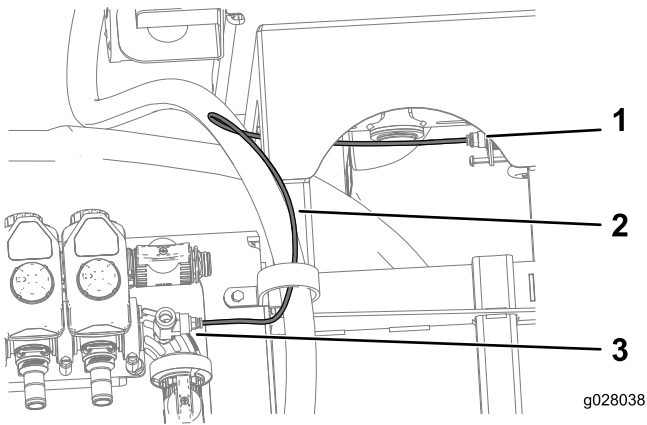
6. Apply PTFE tape to the threads on the T-fitting and connect the T-fitting to the control valve (Figure 14).
7. Apply PTFE to the threads on the coupler and connect the coupler to the T-fitting (Figure 14).
8. Connect the pressure transducer wire to the T-fitting and the valve on the pressure-gauge coupler (Figure 15).

# 5

## Connecting the Spray Hose

### Parts needed for this procedure:

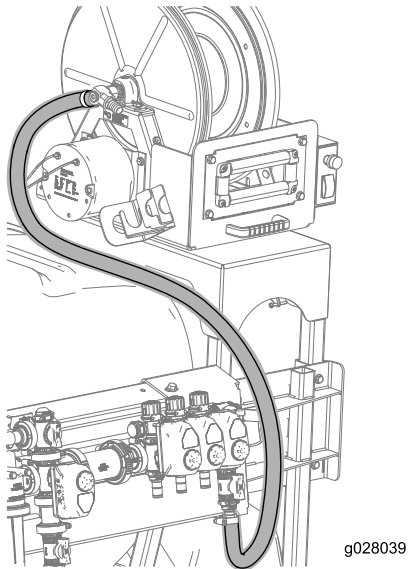
1	Spray-gun hose with fitting
1	Spray gun
1	Small hose clamp



**Figure 15**

1. Pressure-gauge coupler
2. Pressure transducer wire
3. T-fitting

9. Connect the hose (71 inches) to the hose barb on the hose reel assembly and secure the hose using a hose clamp as shown in [Figure 16](#).

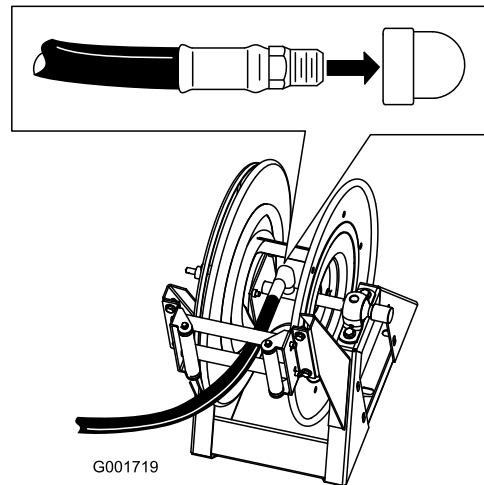


**Figure 16**

10. Secure the wiring harness to the hose-reel supply hose using 3 cable ties.

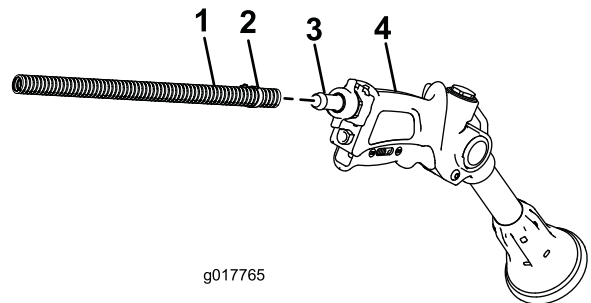
### Procedure

1. Wrap Teflon® tape around the threads of the hose fitting on the long hose, and install the fitting into the connecting tube on the reel ([Figure 17](#)).



**Figure 17**

2. Connect the free end of the long hose to the fitting on the spray gun ([Figure 18](#)).



**Figure 18**

1. Hose
2. Hose clamp
3. Barb
4. Spray gun

3. Secure the end of the hose with a small hose clamp.
4. Connect the negative battery wire to the battery.

5. Press the hose wind button, and carefully guide the hose onto the reel moving the hose from side to side to evenly distribute the hose.

### **⚠ CAUTION**

Hands, loose clothing, long hair, and jewelry could get caught in the hose and reel while rewinding and cause injury.

- Keep your hands clear of the reel and hose while it is rewinding.
- Do not wear loose clothing or jewelry and tie up long hair.

## Operation

### **⚠ WARNING**

Fluid under pressure can penetrate skin and cause injury.

- Keep your body and hands away from nozzles that eject high-pressure fluid.
- Do not aim the sprayer at any person or animal.
- Make sure that all fluid hoses and lines are in good condition and that all connections and fittings are tight before applying pressure to the system.
- Use cardboard or paper to find leaks.
- Safely relieve all pressure in the system before performing any work on it.
- Get immediate medical help if fluid is injected into skin.
- Hot liquids and chemicals can cause burns or other harm.

**Important:** Always empty and clean the sprayer immediately after each use. Failure to do so may cause the chemicals to dry or thicken in the lines, clogging the pump and other components.

Clean the spray system after **each** spraying session. To properly clean the spray system:

- Use 3 separate rinses.
- Use a minimum of 189 L (50 gallons) for each rinse.
- Use the cleaners and neutralizers as recommended by the chemical manufacturers.
- Use pure, clean water (no cleaners or neutralizers) for the **last** rinse.

## Switching from Boom-Spray Mode to Hand-Spray Mode

1. Stop the machine, turn the booms off, and set the parking brake.

### **⚠ WARNING**

Driving while using the hand sprayer can cause loss of control, resulting in injury or death. Do not operate the hand sprayer while driving.

2. At the back of the machine, ensure that the trigger lock on the spray gun is locked.
3. Flip the lever on the control valve to the Open position.
4. At the operator's position, turn the pump on.
5. Switch the master boom to the On position.

6. Set the engine to the desired speed, then engage the neutral engine-speed lock.

**Important:** Do not use a pressure setting higher than 1034 kPa (150 psi) with the hand sprayer.

## Spraying with the Hand Sprayer

1. Pull out the desired amount of hose from the reel.

**Important:** Do not pull the hose with the spray gun. Always hold the hose and pull on it directly. Pulling on the hose with the gun may break the fitting on the gun or damage the hose.

2. Release the trigger lock.
3. Direct the spray gun nozzle at the area to be sprayed and pull the trigger.
4. Release the trigger and set the trigger lock when you are finished.

## Switching from Hand-Spray Mode to Boom-Spray Mode

1. Press the rewind button on the hose reel until only a few feet of hose is out of the reel.

### **⚠ CAUTION**

Hands, loose clothing, long hair, and jewelry could get caught in the hose and reel while rewinding and cause injury.

- Keep your hands clear of the reel and hose while it is rewinding.
  - Do not wear loose clothing or jewelry and tie up long hair.
2. Flip the lever on the control valve to the Closed position.
  3. Direct the spray gun nozzle at an area where it is safe to spray, release the trigger lock, and pull the trigger until all remaining fluid is out of the hose, then set the trigger lock.
  4. Return the spray gun to the holder on the back of the reel.
  5. Return the engine to idle speed.
  6. Stop the pump.

**Important:** Ensure that you flush the spray gun with fresh clean water during your daily cleaning routine (refer to your sprayer *Operator's Manual*). Failure to properly clean the spray gun may degrade the performance and reliability of the hose reel kit and spray gun.

7. Use the rate switch to set the desired pressure.

**Notes:**

# Declaration of Incorporation

The Toro Company, 8111 Lyndale Ave. South, Bloomington, MN, USA declares that the following unit(s) conform(s) to the directives listed, when installed in accordance with the accompanying instructions onto certain Toro models as indicated on the relevant Declarations of Conformity.

Model No.	Serial No.	Product Description	Invoice Description	General Description	Directive
41621	315000001 and Up	Pivoting Hose Reel Kit, 2015 and After Multi-Pro 5800 Turf Sprayer	MP5800 PIVOTING HOSE REEL	Sprayer Accessory	2006/42/EC, 2000/14/EC

Relevant technical documentation has been compiled as required per Part B of Annex VII of 2006/42/EC.

We will undertake to transmit, in response to requests by national authorities, relevant information on this partly completed machinery. The method of transmission shall be electronic transmittal.

This machinery shall not be put into service until incorporated into approved Toro models as indicated on the associated Declaration of Conformity and in accordance with all instructions, whereby it can be declared in conformity with all relevant Directives.

Certified:



David Klis  
Sr. Engineering Manager  
8111 Lyndale Ave. South  
Bloomington, MN 55420, USA  
February 3, 2015

EU Technical Contact:

Peter Tetteroo  
Toro Europe NV  
B-2260 Oevel-Westerloo  
Belgium

Tel. 0032 14 562960  
Fax 0032 14 581911

## International Distributor List

Distributor:	Country:	Phone Number:	Distributor:	Country:	Phone Number:
Agrolanc Kft	Hungary	36 27 539 640	Maquiver S.A.	Colombia	57 1 236 4079
Balama Prima Engineering Equip.	Hong Kong	852 2155 2163	Maruyama Mfg. Co. Inc.	Japan	81 3 3252 2285
B-Ray Corporation	Korea	82 32 551 2076	Mountfield a.s.	Czech Republic	420 255 704 220
Casco Sales Company	Puerto Rico	787 788 8383	Mountfield a.s.	Slovakia	420 255 704 220
Ceres S.A.	Costa Rica	506 239 1138	Munditol S.A.	Argentina	54 11 4 821 9999
CSSC Turf Equipment (pvt) Ltd.	Sri Lanka	94 11 2746100	Norma Garden	Russia	7 495 411 61 20
Cyril Johnston & Co.	Northern Ireland	44 2890 813 121	Oslinger Turf Equipment SA	Ecuador	593 4 239 6970
Cyril Johnston & Co.	Republic of Ireland	44 2890 813 121	Oy Hako Ground and Garden Ab	Finland	358 987 00733
Equiver	Mexico	52 55 539 95444	Parkland Products Ltd.	New Zealand	64 3 34 93760
Femco S.A.	Guatemala	502 442 3277	Perfetto	Poland	48 61 8 208 416
ForGarder OU	Estonia	372 384 6060	Pratoverde SRL.	Italy	39 049 9128 128
G.Y.K. Company Ltd.	Japan	81 726 325 861	Prochaska & Cie	Austria	43 1 278 5100
Geomechaniki of Athens	Greece	30 10 935 0054	RT Cohen 2004 Ltd.	Israel	972 986 17979
Golf international Turizm	Turkey	90 216 336 5993	Riversa	Spain	34 9 52 83 7500
Guandong Golden Star	China	86 20 876 51338	Lely Turfcare	Denmark	45 66 109 200
Hako Ground and Garden	Sweden	46 35 10 0000	Solvart S.A.S.	France	33 1 30 81 77 00
Hako Ground and Garden	Norway	47 22 90 7760	Spypros Stavrinides Limited	Cyprus	357 22 434131
Hayter Limited (U.K.)	United Kingdom	44 1279 723 444	Surge Systems India Limited	India	91 1 292299901
Hydroturf Int. Co Dubai	United Arab Emirates	97 14 347 9479	T-Markt Logistics Ltd.	Hungary	36 26 525 500
Hydroturf Egypt LLC	Egypt	202 519 4308	Toro Australia	Australia	61 3 9580 7355
Irrimac	Portugal	351 21 238 8260	Toro Europe NV	Belgium	32 14 562 960
Irrigation Products Int'l Pvt Ltd.	India	0091 44 2449 4387	Valtech	Morocco	212 5 3766 3636
Jean Heybroek b.v.	Netherlands	31 30 639 4611	Victus Emak	Poland	48 61 823 8369

## European Privacy Notice

### The Information Toro Collects

Toro Warranty Company (Toro) respects your privacy. In order to process your warranty claim and contact you in the event of a product recall, we ask you to share certain personal information with us, either directly or through your local Toro company or dealer.

The Toro warranty system is hosted on servers located within the United States where privacy law may not provide the same protection as applies in your country.

BY SHARING YOUR PERSONAL INFORMATION WITH US, YOU ARE CONSENTING TO THE PROCESSING OF YOUR PERSONAL INFORMATION AS DESCRIBED IN THIS PRIVACY NOTICE.

### The Way Toro Uses Information

Toro may use your personal information to process warranty claims, to contact you in the event of a product recall and for any other purpose which we tell you about. Toro may share your information with Toro's affiliates, dealers or other business partners in connection with any of these activities. We will not sell your personal information to any other company. We reserve the right to disclose personal information in order to comply with applicable laws and with requests by the appropriate authorities, to operate our systems properly or for our own protection or that of other users.

### Retention of your Personal Information

We will keep your personal information as long as we need it for the purposes for which it was originally collected or for other legitimate purposes (such as regulatory compliance), or as required by applicable law.

### Toro's Commitment to Security of Your Personal Information

We take reasonable precautions in order to protect the security of your personal information. We also take steps to maintain the accuracy and current status of personal information.

### Access and Correction of your Personal Information

If you would like to review or correct your personal information, please contact us by email at [legal@toro.com](mailto:legal@toro.com).

## Australian Consumer Law

Australian customers will find details relating to the Australian Consumer Law either inside the box or at your local Toro Dealer.



# Toro General Commercial Product Warranty

## A Two-Year Limited Warranty

### Conditions and Products Covered

The Toro Company and its affiliate, Toro Warranty Company, pursuant to an agreement between them, jointly warrant your Toro Commercial product ("Product") to be free from defects in materials or workmanship for two years or 1500 operational hours\*, whichever occurs first. This warranty is applicable to all products with the exception of Aerators (refer to separate warranty statements for these products). Where a warrantable condition exists, we will repair the Product at no cost to you including diagnostics, labor, parts, and transportation. This warranty begins on the date the Product is delivered to the original retail purchaser.

\* Product equipped with an hour meter.

### Instructions for Obtaining Warranty Service

You are responsible for notifying the Commercial Products Distributor or Authorized Commercial Products Dealer from whom you purchased the Product as soon as you believe a warrantable condition exists. If you need help locating a Commercial Products Distributor or Authorized Dealer, or if you have questions regarding your warranty rights or responsibilities, you may contact us at:

Toro Commercial Products Service Department  
Toro Warranty Company  
8111 Lyndale Avenue South  
Bloomington, MN 55420-1196  
  
952-888-8801 or 800-952-2740  
E-mail: commercial.warranty@toro.com

### Owner Responsibilities

As the Product owner, you are responsible for required maintenance and adjustments stated in your *Operator's Manual*. Failure to perform required maintenance and adjustments can be grounds for disallowing a warranty claim.

### Items and Conditions Not Covered

Not all product failures or malfunctions that occur during the warranty period are defects in materials or workmanship. This warranty does not cover the following:

- Product failures which result from the use of non-Toro replacement parts, or from installation and use of add-on, or modified non-Toro branded accessories and products. A separate warranty may be provided by the manufacturer of these items.
- Product failures which result from failure to perform recommended maintenance and/or adjustments. Failure to properly maintain your Toro product per the Recommended Maintenance listed in the *Operator's Manual* can result in claims for warranty being denied.
- Product failures which result from operating the Product in an abusive, negligent, or reckless manner.
- Parts subject to consumption through use unless found to be defective. Examples of parts which are consumed, or used up, during normal Product operation include, but are not limited to, brake pads and linings, clutch linings, blades, reels, rollers and bearings (sealed or greasable), bed knives, spark plugs, castor wheels and bearings, tires, filters, belts, and certain sprayer components such as diaphragms, nozzles, and check valves, etc.
- Failures caused by outside influence. Conditions considered to be outside influence include, but are not limited to, weather, storage practices, contamination, use of unapproved fuels, coolants, lubricants, additives, fertilizers, water, or chemicals, etc.
- Failure or performance issues due to the use of fuels (e.g. gasoline, diesel, or biodiesel) that do not conform to their respective industry standards.

- Normal noise, vibration, wear and tear, and deterioration.
- Normal "wear and tear" includes, but is not limited to, damage to seats due to wear or abrasion, worn painted surfaces, scratched decals or windows, etc.

### Parts

Parts scheduled for replacement as required maintenance are warranted for the period of time up to the scheduled replacement time for that part. Parts replaced under this warranty are covered for the duration of the original product warranty and become the property of Toro. Toro will make the final decision whether to repair any existing part or assembly or replace it. Toro may use remanufactured parts for warranty repairs.

### Deep Cycle and Lithium-Ion Battery Warranty:

Deep cycle and Lithium-Ion batteries have a specified total number of kilowatt-hours they can deliver during their lifetime. Operating, recharging, and maintenance techniques can extend or reduce total battery life. As the batteries in this product are consumed, the amount of useful work between charging intervals will slowly decrease until the battery is completely worn out. Replacement of worn out batteries, due to normal consumption, is the responsibility of the product owner. Battery replacement may be required during the normal product warranty period at owner's expense. Note: (Lithium-Ion battery only): A Lithium-Ion battery has a part only prorated warranty beginning year 3 through year 5 based on the time in service and kilowatt hours used. Refer to the *Operator's Manual* for additional information.

### Maintenance is at Owner's Expense

Engine tune-up, lubrication, cleaning and polishing, replacement of filters, coolant, and completing recommended maintenance are some of the normal services Toro products require that are at the owner's expense.

### General Conditions

Repair by an Authorized Toro Distributor or Dealer is your sole remedy under this warranty.

**Neither The Toro Company nor Toro Warranty Company is liable for indirect, incidental or consequential damages in connection with the use of the Toro Products covered by this warranty, including any cost or expense of providing substitute equipment or service during reasonable periods of malfunction or non-use pending completion of repairs under this warranty. Except for the Emissions warranty referenced below, if applicable, there is no other express warranty. All implied warranties of merchantability and fitness for use are limited to the duration of this express warranty.**

Some states do not allow exclusions of incidental or consequential damages, or limitations on how long an implied warranty lasts, so the above exclusions and limitations may not apply to you. This warranty gives you specific legal rights, and you may also have other rights which vary from state to state.

### Note regarding engine warranty:

The Emissions Control System on your Product may be covered by a separate warranty meeting requirements established by the U.S. Environmental Protection Agency (EPA) and/or the California Air Resources Board (CARB). The hour limitations set forth above do not apply to the Emissions Control System Warranty. Refer to the Engine Emission Control Warranty Statement supplied with your product or contained in the engine manufacturer's documentation for details.

### Countries Other than the United States or Canada

Customers who have purchased Toro products exported from the United States or Canada should contact their Toro Distributor (Dealer) to obtain guarantee policies for your country, province, or state. If for any reason you are dissatisfied with your Distributor's service or have difficulty obtaining guarantee information, contact the Toro importer.