



**Count on it.**

**Parts Catalog**

**18in Walk-Behind Aerator**

Model No. 23516—Serial No. 315000001 and Up

Model No. 33516—Serial No. 315000001 and Up



# Ordering Replacement Parts

To order replacement parts, please supply the part number, the quantity, and the description of each part desired.

## Understanding Reference Numbers

Each identified part in an illustration has a reference number. The reference number for a part also appears in the parts list, along with other information about the part.

This catalog uses two special reference number formats, one to indicate parts in a service assembly and another to indicate the quantity of a given part in an illustration.

## Service Assembly Reference Numbers

Parts in service assemblies have reference numbers in the form a:b. The a represents the reference number of the entire service assembly and the b represents a sequential number unique to each part within the service assembly.

For example, a wheel assembly might be identified by reference number 6, the tire by 6:1, the valve by 6:2, and the wheel by 6:3. When you order the assembly identified by reference number 6, you receive all parts identified by reference numbers 6:1, 6:2, and 6:3. However, you may also order any part individually. Reference numbers of this type appear in illustration and in parts lists.

## Reference Numbers Indicating Quantity

In an illustration, if a reference number indicates more than one part, the reference number has the form nX y. The n represents the quantity of the part, the X is the multiplication symbol, and the y represents the reference number.

For example, in an illustration, the reference number 2X 37 means that two of the parts identified by reference number 37 are indicated.

# List of Abbreviations

**AR:** as required

**ASM:** assembly

**BBC:** blade brake control

**BHTF:** button head thread forming

**CARR:** carriage

**CCW:** counter clockwise

**CW:** clockwise

**DEG:** degrees

**DPA:** Dual Point Adjustment

**ECM:** electronic control module

**EXT:** external

**FH:** flat head

**GA:** gauge

**HD:** heavy-duty

**HF:** hex flange

**HH:** hex head

**HHF:** hex head flange

**HHFTF:** hex head flange thread forming

**HJ:** hex jam

**HLH:** hex lag head

**HOC:** height-of-cut

**HP:** high pressure

**HSBH:** hex socket button head

**HSFH:** hex socket flat head

**HSH:** hex socket head

**HWH:** hex washer head

**HWHTF:** hex washer head thread forming

**HYD:** hydraulic

**LH:** left hand

**LP:** low pressure

**LPG:** Liquefied Petroleum Gas

**NI:** nylon insert

**NPTF:** national pipe thread fine

**PFH:** phillips flat head

**PPH:** phillips pan head

**PPHTF:** phillips pan head thread forming

**PRH:** phillips round head

**PTH:** phillips truss head

**PTO:** power-take-off

**RH:** right hand

**ROPS:** roll-over protection system

**RRB:** rear roller brush

**SFH:** slotted fillister head

**SHH:** slotted hex head

**SHWH:** slotted hex washer head

**SPH:** slotted pan head

**SQH:** square head

**SRH:** slotted round head

**STD:** standard

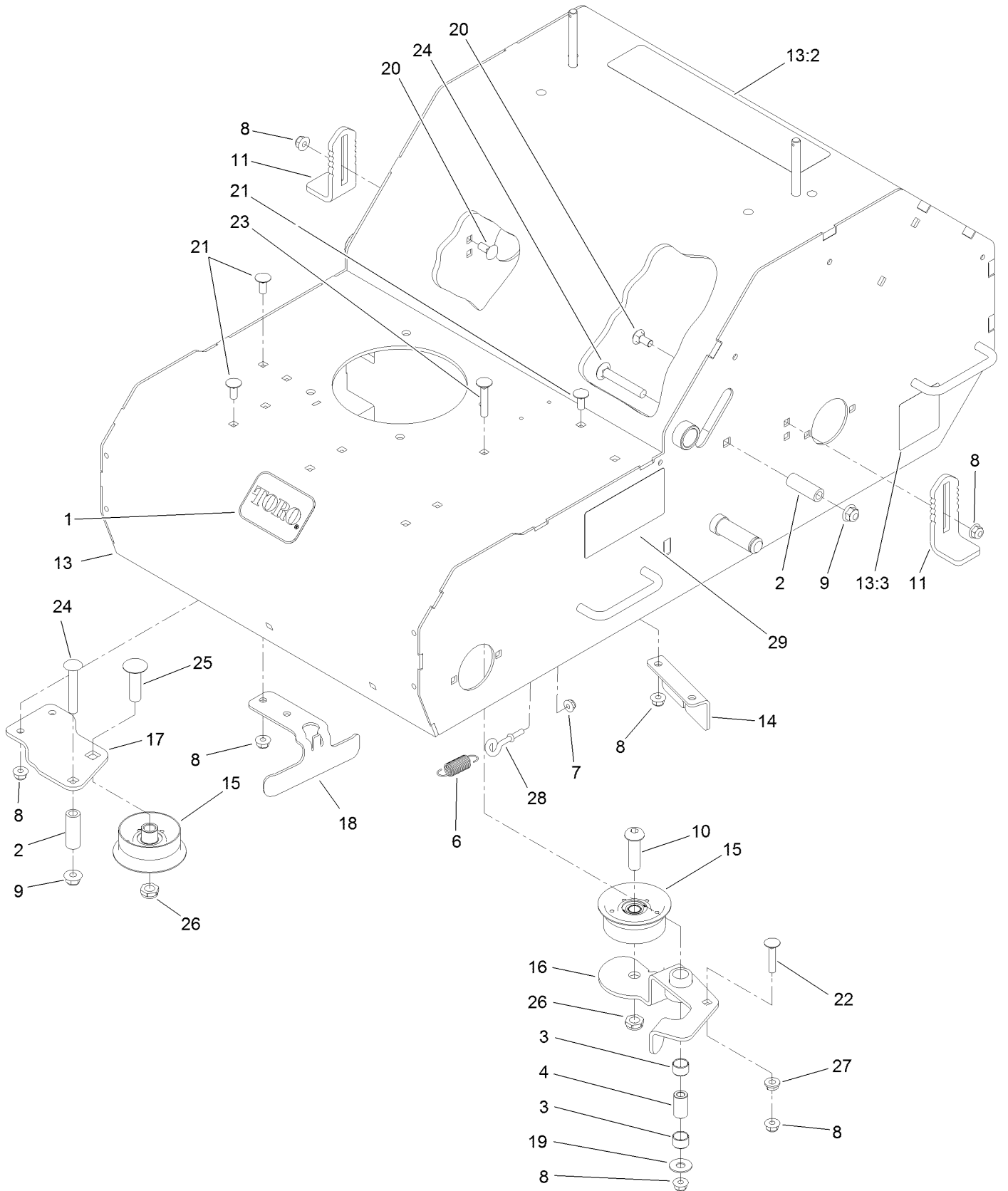
**TAP:** self tapping

**TTH:** torx truss head

# Contents

- Frame Assembly ..... 4
- Idler Sprocket and Weight Assembly ..... 6
- Engine Assembly ..... 8
- Transmission and Wheel Assembly ..... 10
- Handle Assembly ..... 12
- Wheel Assembly ..... 14
- Tine Wheel Assembly ..... 16

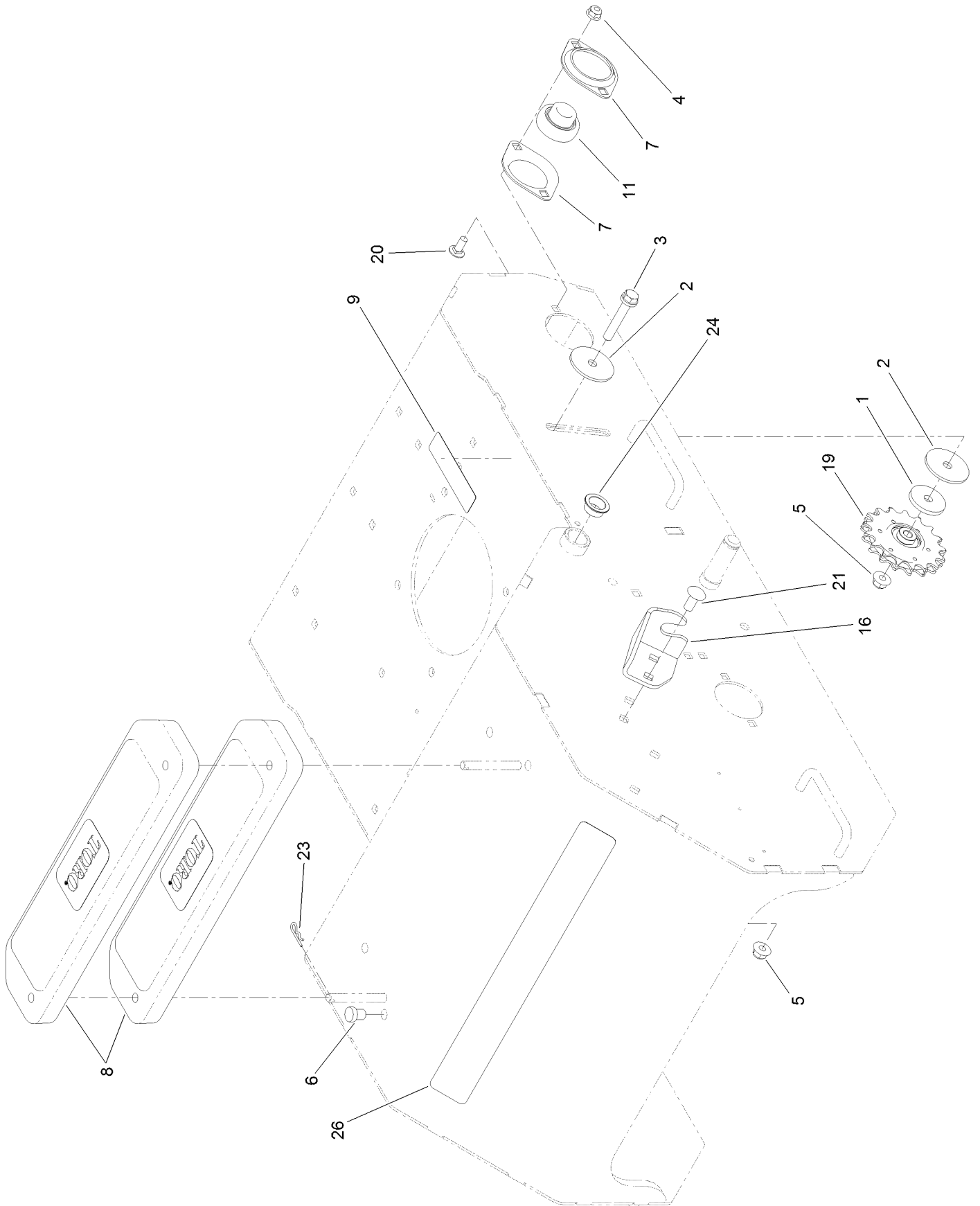
# Frame Assembly



## Frame Assembly (continued)

| <i>Ref.</i> | <i>Part Number</i> | <i>Qty.</i> | <i>Description</i>     | <i>Ref.</i> | <i>Part Number</i> | <i>Qty.</i> | <i>Description</i>    |
|-------------|--------------------|-------------|------------------------|-------------|--------------------|-------------|-----------------------|
| 1           | 70-2200            | 1           | Decal                  | 16          | 130-2128-03        | 1           | Arm-Idler             |
| 2           | 95-6448            | 3           | Spacer                 | 17          | 130-2131-03        | 1           | Bracket-Mount, Pulley |
| 3           | 103-6111           | 2           | Bearing                | 18          | 130-2132-03        | 1           | Guide-Belt            |
| 4           | 103-7108           | 1           | Bushing-Arm, Idler     | 19          | 1126               | 1           | Washer-Flat           |
| 6           | 104-0869           | 1           | Spring-Brake           | 20          | 3230-1             | 4           | Bolt-CARR             |
| 7           | 104-7201           | 1           | Nut-Flange, NI         | 21          | 3230-23            | 6           | Screw-CARR            |
| 8           | 104-8300           | 10          | Nut-Flange, NI         | 22          | 3230-4             | 1           | Screw-CARR            |
| 9           | 104-8301           | 3           | Nut-Flange, NI         | 23          | 3230-5             | 1           | Screw-CARR            |
| 10          | 108-1993           | 1           | Screw-HSBH             | 24          | 3231-44            | 3           | Screw-CARR            |
| 11          | 116-9886           | 2           | Stop-Depth             | 25          | 3233-30            | 1           | Screw-CARR            |
| 13          | 125-3855           | 1           | Frame ASM              | 26          | 3296-45            | 2           | Nut-Lock, NI          |
| 13:2        | 121-2009           | 1           | Decal-Warning, Aerator | 27          | 32128-20           | 1           | Nut-HF                |
| 13:3        | 121-6150           | 2           | Decal-Warning          | 28          | 611243             | 1           | Bolt-Eye              |
| 14          | 125-3941-03        | 1           | Bracket-Mount, Cable   | 29          | 130-2155           | 1           | Decal-Lift Lock       |
| 15          | 127-4068           | 2           | Pulley-Idler, Flat     |             |                    |             |                       |

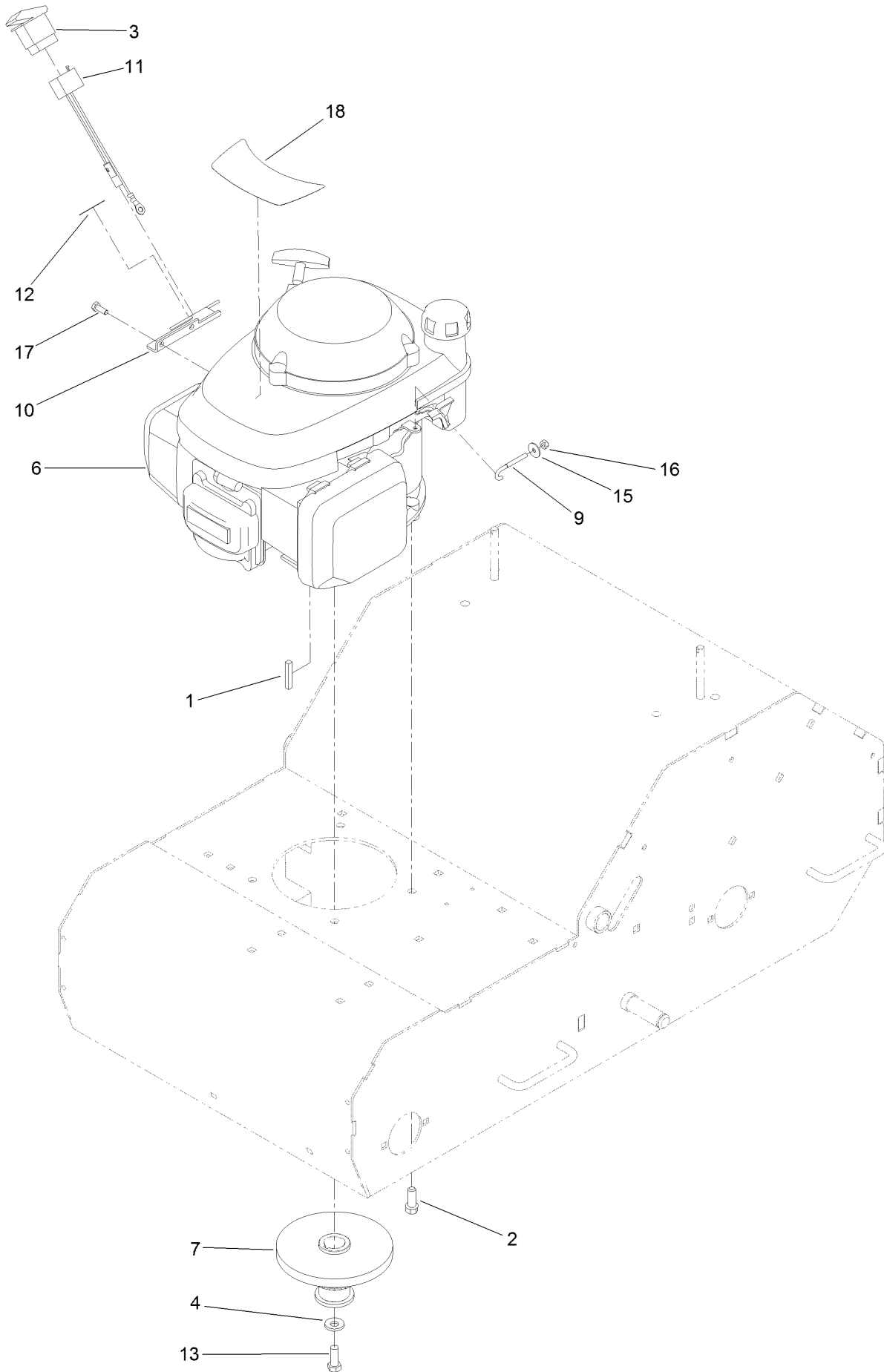
# Idler Sprocket and Weight Assembly



## Idler Sprocket and Weight Assembly (continued)

| <i>Ref.</i> | <i>Part Number</i> | <i>Qty.</i> | <i>Description</i>    | <i>Ref.</i> | <i>Part Number</i> | <i>Qty.</i> | <i>Description</i>     |
|-------------|--------------------|-------------|-----------------------|-------------|--------------------|-------------|------------------------|
| 1           | 5-1720             | 1           | Washer                | 11          | 106-8448           | 2           | Bearing-Race, Extended |
| 2           | 83-1040            | 2           | Washer-Flat           | 16          | 130-2147           | 1           | Bracket-Cable          |
| 3           | 100-2592           | 1           | Screw-HHF             | 19          | 130-2114           | 1           | Sprocket-Idler         |
| 4           | 104-8300           | 4           | Nut-Flange, NI        | 20          | 3230-23            | 4           | Screw-CARR             |
| 5           | 104-8301           | 4           | Nut-Flange, NI        | 21          | 3231-27            | 2           | Screw-CARR             |
| 6           | 105-4740           | 4           | Bumper-Rubber         | 23          | 3290-307           | 2           | Pin-Cotter             |
| 7           | 105-9714           | 4           | Flange-Bearing        | 24          | 108519             | 2           | Bushing-Bronze         |
| 8           | 112-7059-01        | 2           | Weight-Cast           | 26          | 130-2161           | 1           | Decal-Operation        |
| 9           | 117-2718           | 1           | Decal-Arrester, Spark |             |                    |             |                        |

# Engine Assembly

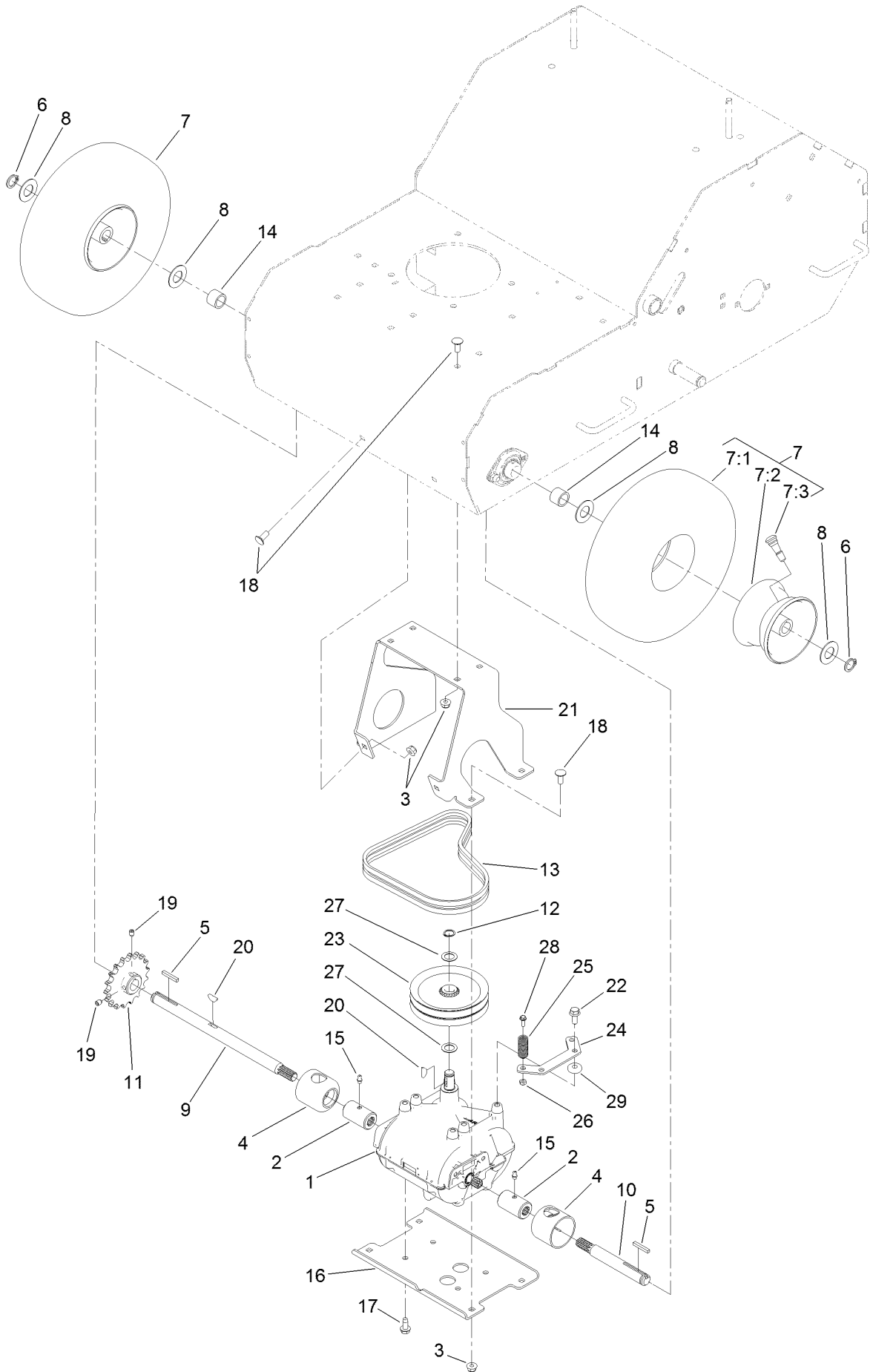




## Engine Assembly (continued)

| <i>Ref.</i> | <i>Part Number</i> | <i>Qty.</i> | <i>Description</i>            | <i>Ref.</i> | <i>Part Number</i> | <i>Qty.</i> | <i>Description</i> |
|-------------|--------------------|-------------|-------------------------------|-------------|--------------------|-------------|--------------------|
| 1           | 67-7490            | 1           | Key-Square                    | 10          | 121-6200-03        | 1           | Bracket-Switch     |
| 2           | 95-1726            | 4           | Screw-Taptite                 | 11          | 121-6201           | 1           | Harness-Wire       |
| 3           | 95-8999            | 1           | Switch                        | 12          | 121-6229           | 1           | Decal-On/Off       |
| 4           | 98-5975            | 1           | Washer-Belleville             | 13          | 3211-4             | 1           | Screw-HH           |
| 6           | 112-8771           | 1           | Engine-Honda, Gsv190La<br>A3T | 15          | 3256-61            | 1           | Washer-Flat        |
| 7           | 127-4097           | 1           | Pulley-Engine, Double         | 16          | 3296-2             | 1           | Nut-Lock, NI       |
| 9           | 121-6186           | 1           | Hook-Override                 | 17          | 33113-016          | 2           | Screw-HH           |
|             |                    |             |                               | 18          | 117-5245           | 1           | Decal-Engine       |

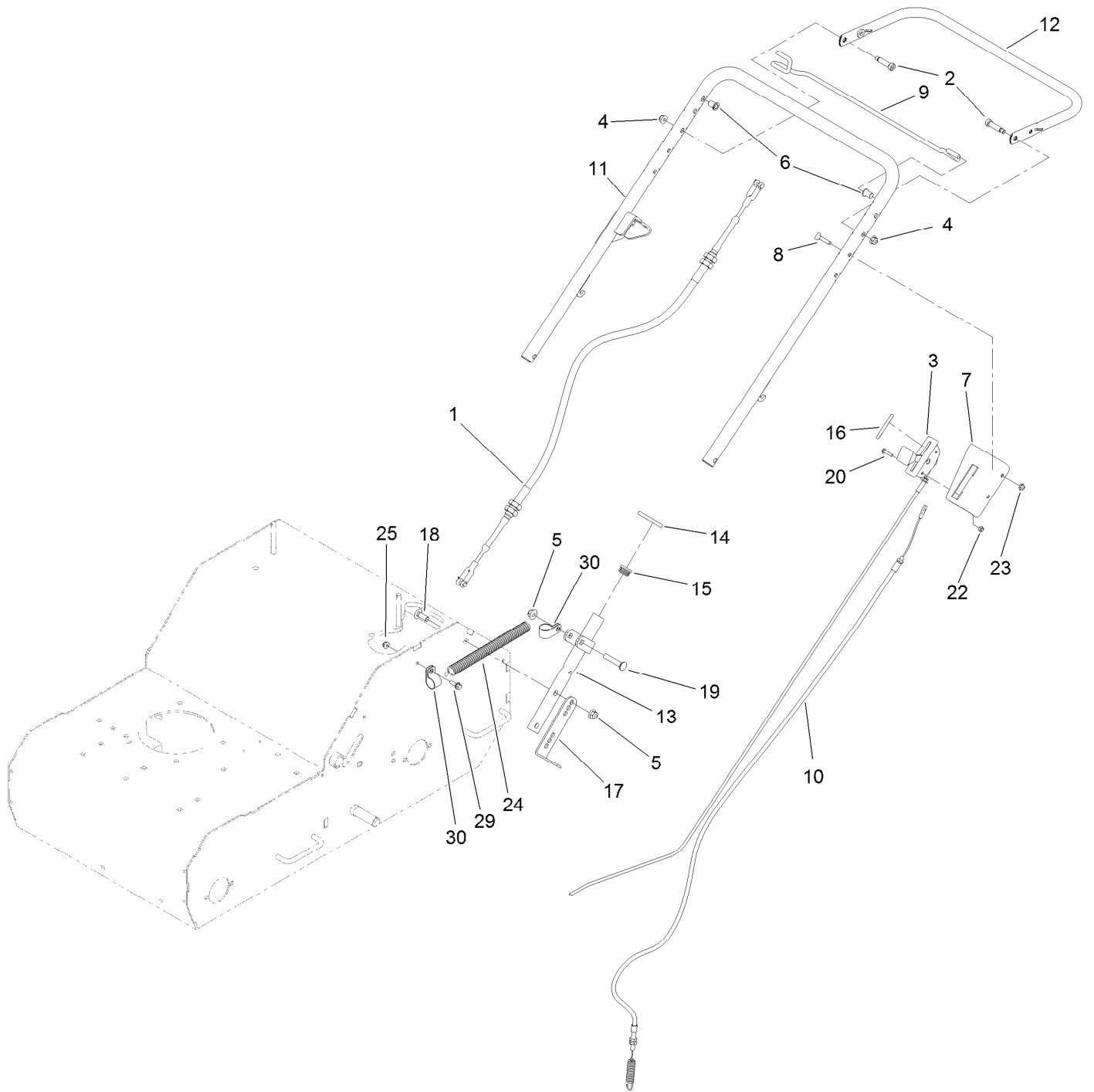
# Transmission and Wheel Assembly



## Transmission and Wheel Assembly (continued)

| <i>Ref.</i> | <i>Part Number</i> | <i>Qty.</i> | <i>Description</i>   | <i>Ref.</i> | <i>Part Number</i> | <i>Qty.</i> | <i>Description</i>             |
|-------------|--------------------|-------------|----------------------|-------------|--------------------|-------------|--------------------------------|
| 1           | 131-5740           | 1           | Transmission-Gear    | 15          | 302-19             | 2           | Fitting-Grease                 |
| 2           | 1-323680           | 2           | Coupler              | 16          | 125-3823-03        | 1           | Mount-Transmission, Lower      |
| 3           | 104-8300           | 10          | Nut-Flange, NI       | 17          | 9264964            | 4           | Screw-HWH, Thread Cut          |
| 4           | 51-4220            | 2           | Guard-Coupler        | 18          | 3230-23            | 10          | Screw-CARR                     |
| 5           | 92-2649            | 2           | Key-Square           | 19          | 3246-3             | 2           | Screw-HSH                      |
| 6           | 32120-93           | 2           | Ring-Retaining       | 20          | 3257-5             | 2           | Key-Woodruff                   |
| 7           | 120-3707           | 2           | Wheel ASM            | 21          | 125-3938-03        | 1           | Channel-Mount,<br>Transmission |
| 7:1         | 121-6081           | 1           | Tire                 | 22          | 3234-47            | 2           | Screw-HHF                      |
| 7:2         | 120-3706           | 1           | Wheel-Rim            | 23          | 127-4003           | 1           | Sheave                         |
| 7:3         | 5108               | 1           | Valve                | 24          | 130-2105-03        | 1           | Guide-Spring, Mount            |
| 8           | 3256-39            | 4           | Washer-Flat          | 25          | 127-4077           | 2           | Spring-Retainer                |
| 9           | 121-4878           | 1           | Shaft-Transmission   | 26          | 3296-2             | 2           | Nut-Lock, NI                   |
| 10          | 121-4879           | 1           | Shaft-Transmission   | 27          | 108-0015           | 2           | Washer-Flat                    |
| 11          | 130-2115           | 1           | Sprocket             | 28          | 32105-23           | 2           | Screw                          |
| 12          | 32120-64           | 1           | Ring-Snap, External  | 29          | 115-5118           | 2           | Washer                         |
| 13          | 130-2142           | 1           | Belt-V, Matched Pair |             |                    |             |                                |
| 14          | 83-0730            | 2           | Spacer-Lockup        |             |                    |             |                                |

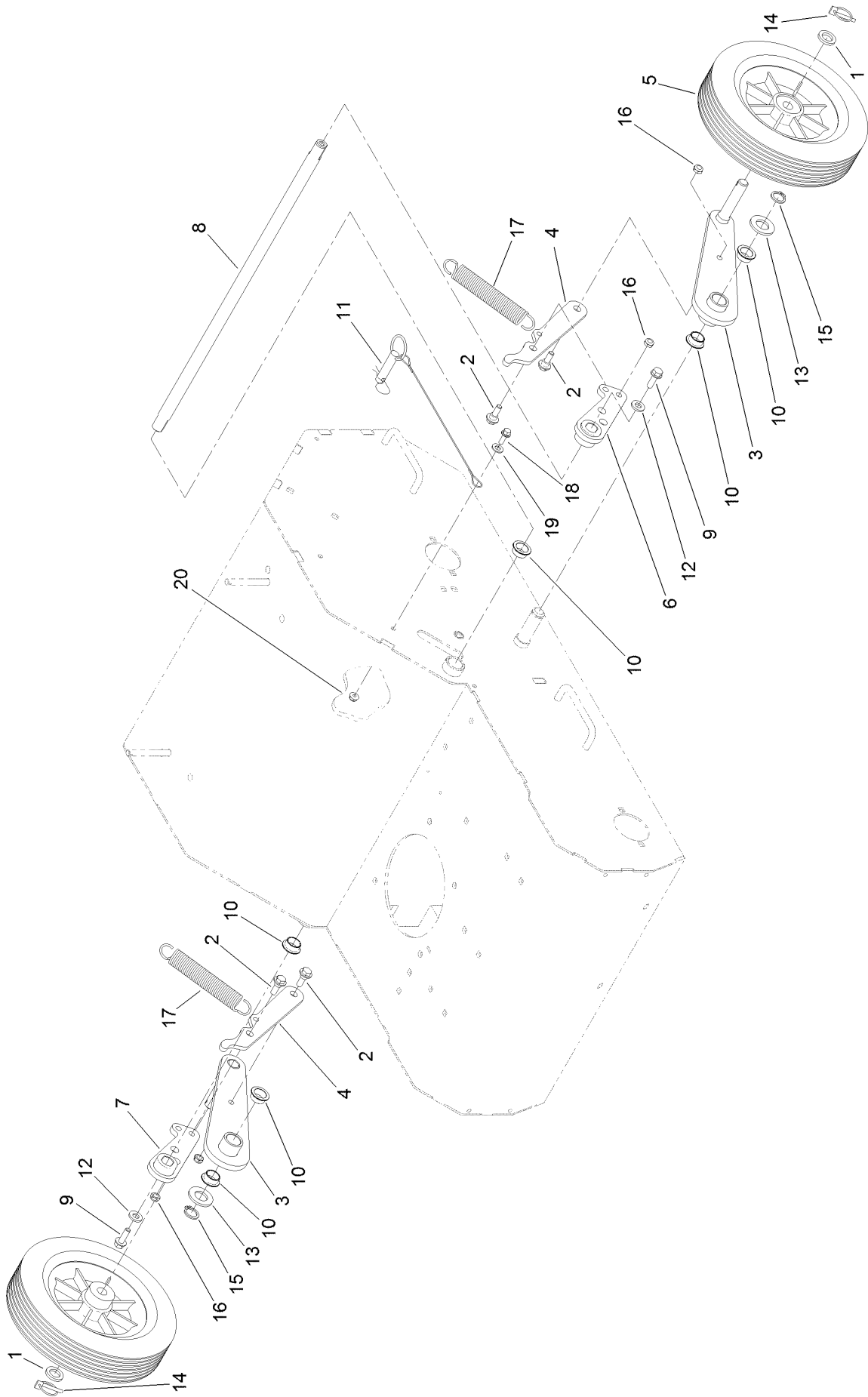
# Handle Assembly



## Handle Assembly (continued)

| <i>Ref.</i> | <i>Part Number</i> | <i>Qty.</i> | <i>Description</i> | <i>Ref.</i> | <i>Part Number</i> | <i>Qty.</i> | <i>Description</i>   |
|-------------|--------------------|-------------|--------------------|-------------|--------------------|-------------|----------------------|
| 1           | 130-2160           | 1           | Cable-Push/Pull    | 14          | 121-6202           | 2           | Ring-Handle Lock     |
| 2           | 65-9340            | 2           | Bolt-Shoulder      | 15          | 121-4870           | 2           | Plug                 |
| 3           | 130-2136           | 1           | Control-Throttle   | 16          | 121-6222           | 1           | Decal-Throttle/Choke |
| 4           | 104-8300           | 2           | Nut-Flange, NI     | 17          | 130-2150-03        | 2           | Spring-Post          |
| 5           | 104-8301           | 6           | Nut-Flange, NI     | 18          | 3231-22            | 4           | Screw-CARR           |
| 6           | 109-2713           | 2           | Bushing            | 19          | 3231-6             | 2           | Screw-CARR           |
| 7           | 127-4058-03        | 1           | Bracket-Throttle   | 20          | 106-9169           | 2           | Screw-HWH            |
| 8           | 109-8144           | 3           | Bolt-Handle        | 22          | 3296-2             | 2           | Nut-Lock, NI         |
| 9           | 130-2130           | 1           | Bail-Traction      | 23          | 3296-56            | 2           | Nut-Lock, NI         |
| 10          | 121-4860           | 1           | Cable-Idler        | 24          | 121-5799           | 1           | Conduit-Convolute    |
| 11          | 121-4862-03        | 1           | Handle             | 25          | 104-7201           | 1           | Nut-Flange, NI       |
| 12          | 130-2102-03        | 1           | Handle-Lift        | 29          | 3234-4             | 1           | Screw-HHF            |
| 13          | 121-4866-03        | 2           | Mount-Handle       | 30          | 2412-41            | 2           | Clamp                |

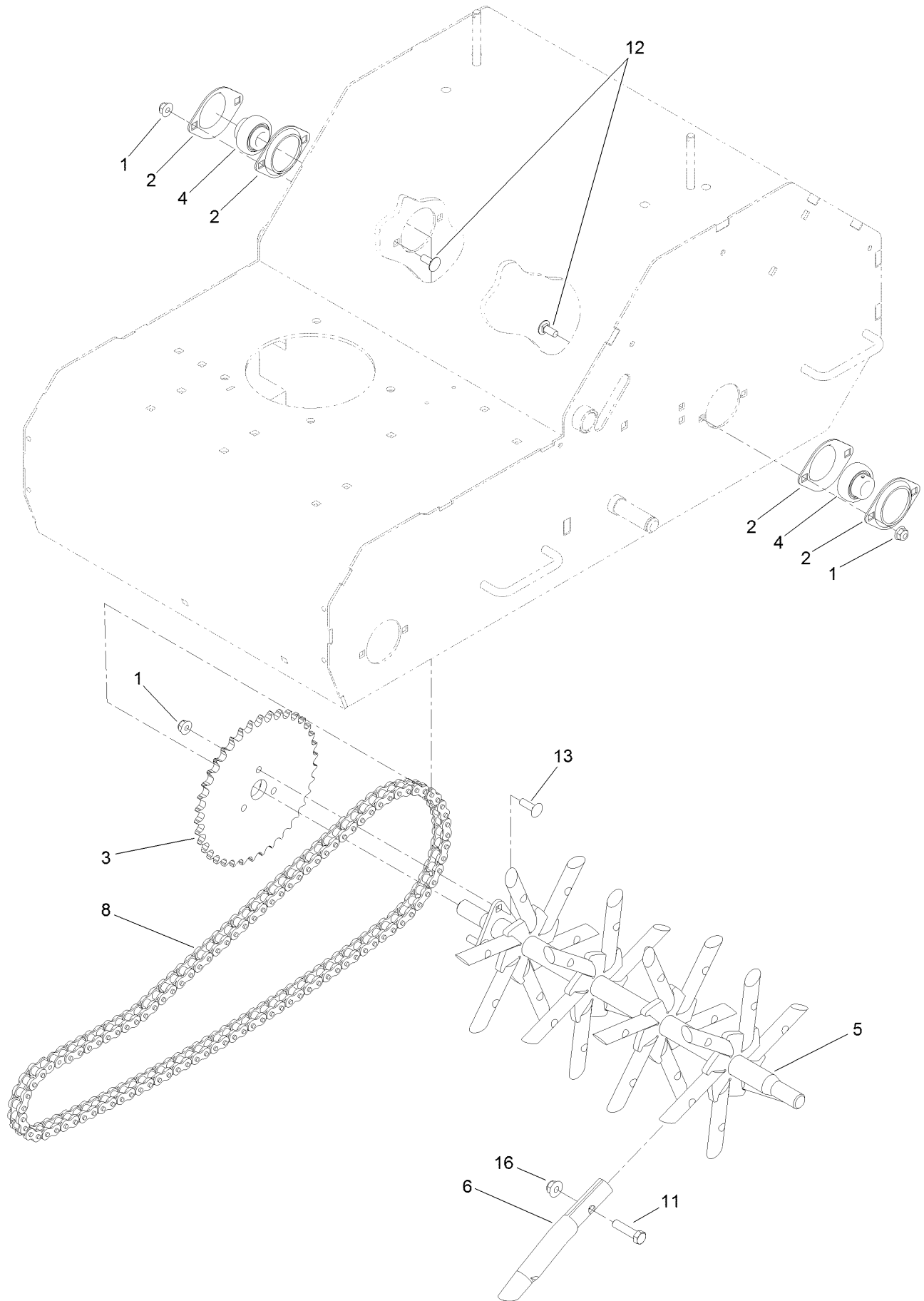
# Wheel Assembly



## Wheel Assembly (continued)

| <i>Ref.</i> | <i>Part Number</i> | <i>Qty.</i> | <i>Description</i>      | <i>Ref.</i> | <i>Part Number</i> | <i>Qty.</i> | <i>Description</i> |
|-------------|--------------------|-------------|-------------------------|-------------|--------------------|-------------|--------------------|
| 1           | 63-9710            | 2           | Spacer-Bearing          | 11          | 106-9951           | 1           | Hitch Pin ASM      |
| 2           | 116-2670           | 4           | Screw-Shoulder          | 12          | 100-4852           | 2           | Washer-Hardened    |
| 3           | 121-4886-03        | 2           | Arm-Wheel               | 13          | 3256-28            | 2           | Washer-Flat        |
| 4           | 130-2148-03        | 2           | Link-Connecting, Pinned | 14          | 3290-495           | 2           | Pin-Klik           |
| 5           | 120-3560           | 2           | Wheel-10 Inch           | 15          | 32120-93           | 2           | Ring-Retaining     |
| 6           | 130-2157-03        | 1           | Hub-Lift, LH            | 16          | 3296-47            | 4           | Nut-Lock, NI       |
| 7           | 130-2158-03        | 1           | Hub-Lift, RH            | 17          | 125-3786           | 2           | Spring-Extension   |
| 8           | 125-3856           | 1           | Shaft-Pivot             | 18          | 3234-4             | 1           | Screw-HHF          |
| 9           | 3234-17            | 2           | Screw-HHF               | 19          | 3256-23            | 1           | Washer-Flat        |
| 10          | 108519             | 4           | Bushing-Bronze          | 20          | 104-7201           | 1           | Nut-Flange, NI     |

# Tine Wheel Assembly





## Tine Wheel Assembly (continued)

| <i>Ref.</i> | <i>Part Number</i> | <i>Qty.</i> | <i>Description</i>     | <i>Ref.</i> | <i>Part Number</i> | <i>Qty.</i> | <i>Description</i> |
|-------------|--------------------|-------------|------------------------|-------------|--------------------|-------------|--------------------|
| 1           | 104-8300           | 7           | Nut-Flange, NI         | 8           | 130-2112           | 1           | Chain              |
| 2           | 105-9714           | 4           | Flange-Bearing         | 11          | 323-8              | 24          | Screw-HH           |
| 3           | 130-2116           | 1           | Sprocket               | 12          | 3230-23            | 4           | Screw-CARR         |
| 4           | 106-8448           | 2           | Bearing-Race, Extended | 13          | 3230-22            | 3           | Screw-CARR         |
| 5           | 125-3852-01        | 1           | Wheel-Tine             | 16          | 104-8301           | 24          | Nut-Flange, NI     |
| 6           | 126-2143           | 24          | Tine-Coring (3/4 Inch) |             |                    |             |                    |

**Notes:**

**Notes:**



**Count on it.**