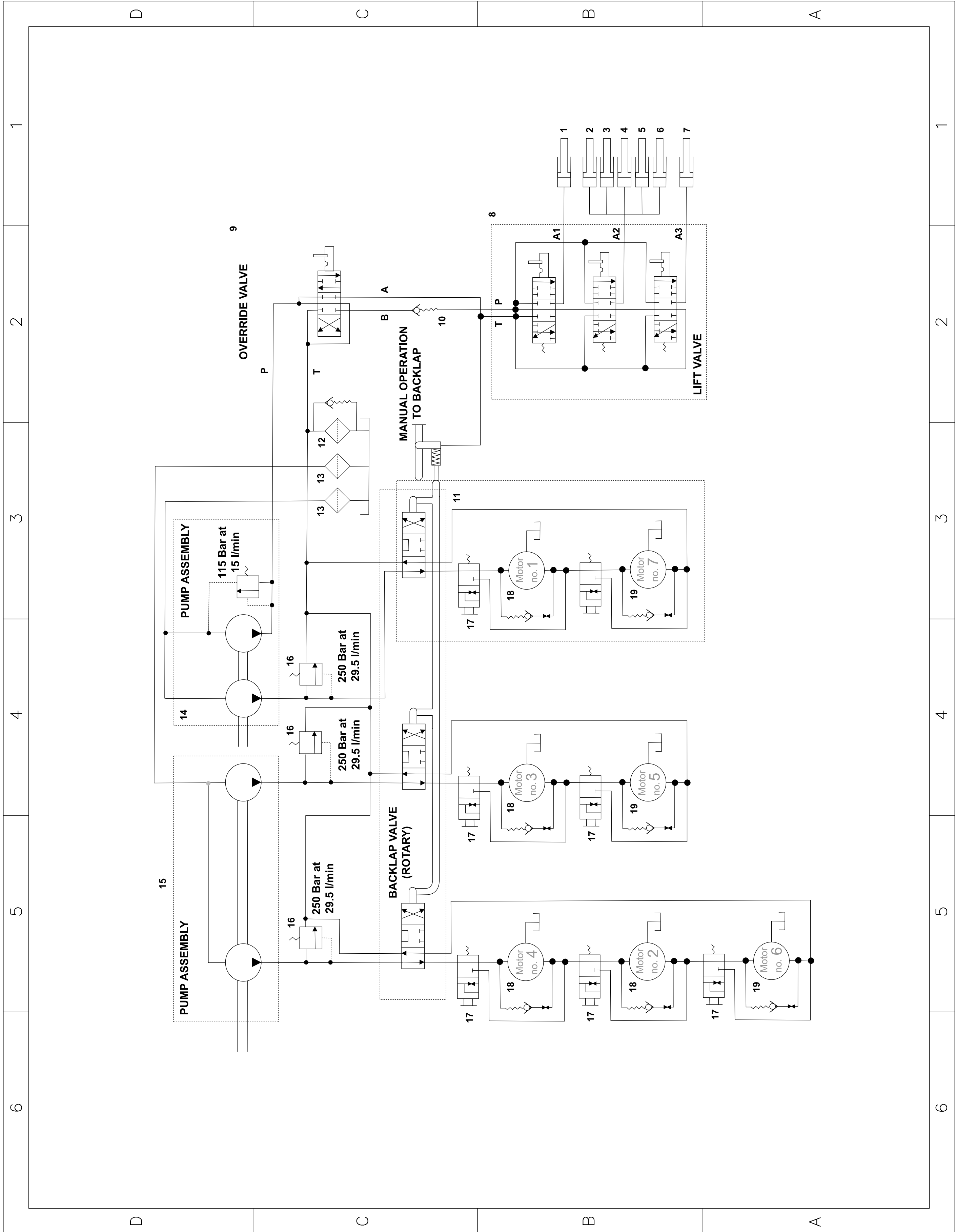




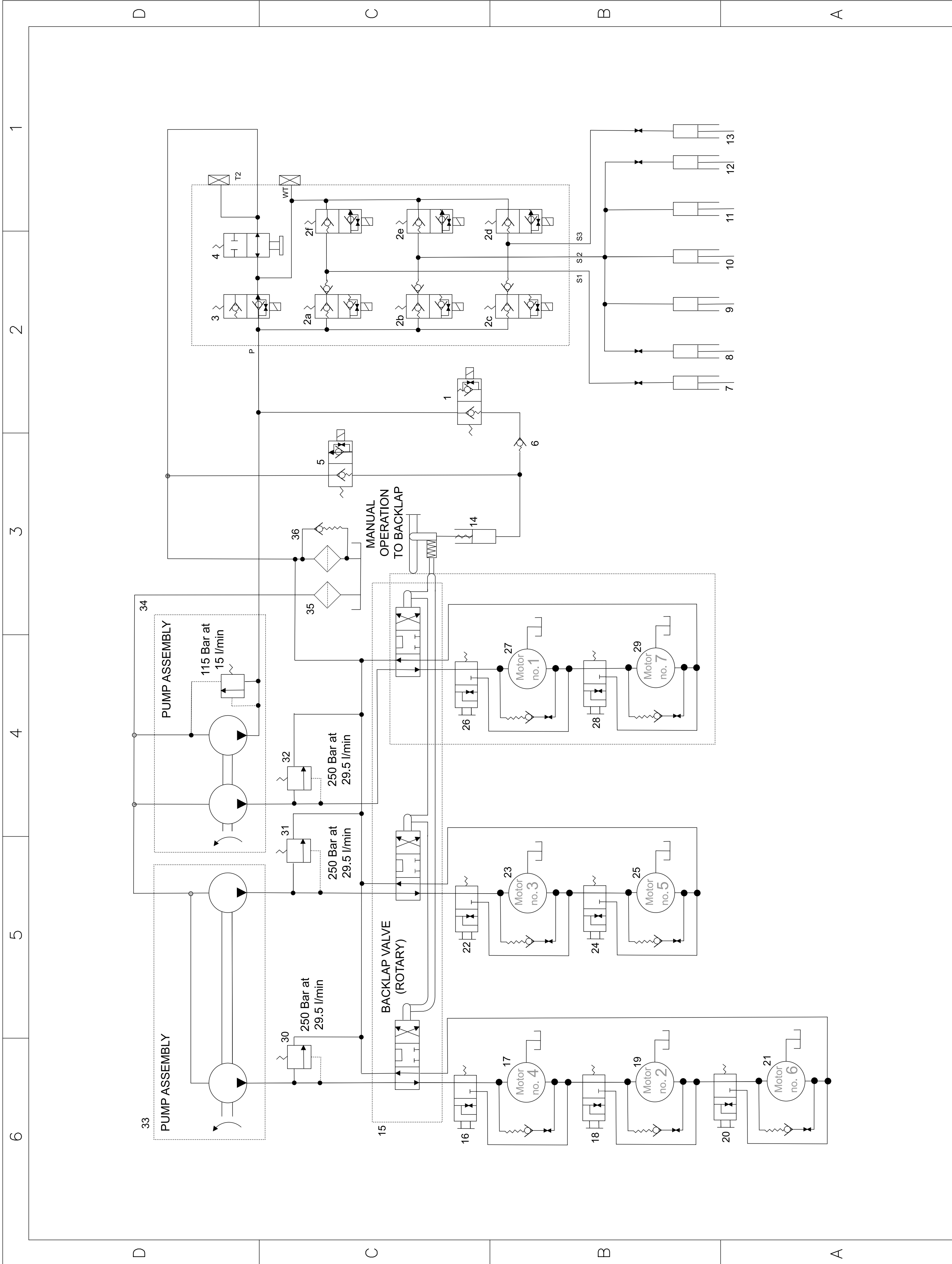
**TM7490 7-Gang Trailed Mower**  
 Model No. 02701—Serial No. 31500001 and Up

Hydraulic Schematic

Model No. 02701  
 HAY-G00976-A Rev A  
 1 of 2



- 1. Lift cylinder (66-06-001w)
- 2. Lift cylinder (74-06-012w)
- 3. Lift cylinder (63-06-001w)
- 4. Lift cylinder (74-06-058w)
- 5. Lift cylinder (63-06-001w)
- 6. Lift cylinder (74-06-012w)
- 7. Lift cylinder (66-06-001w)
- 8. Lift control valve (767603w)
- 9. Override control valve (767604w)
- 10. Check valve (65-06-303)
- 11. Rotary valve 3 bank (65-06-343w)
- 12. Return filter (65-06-482)
- 13. Suction strainer (10-06-025)
- 14. Tandem pump assembly (767601)
- 15. Tandem pump assembly (767600)
- 16. 250 bar relief-valve assembly (749611)
- 17. Diverter valve (953601)
- 18. Reel motor, left (910696)
- 19. Reel motor, right (924602)



- |   |                                    |                                   |
|---|------------------------------------|-----------------------------------|
| 1. Solenoid valve                         | 17. Hydraulic motor no. 4 (940602) | 31. Pressure relief valve 250 bar |
| 2a. Solenoid valve                        | 18. Valve, diverter                | 32. Pressure relief valve 250 bar |
| 2b. Solenoid valve                        | 19. Hydraulic motor no. 2 (940603) | 33. Tandem pump 767601            |
| 2c. Solenoid valve                        | 20. Valve, diverter                | 34. Tandem pump 767600            |
| 2d. Solenoid valve                        | 21. Hydraulic motor no. 6 (910696) | 35. Suction strainer              |
| 2e. Solenoid valve                        | 22. Valve, diverter                | 36. Return filter 65-06-482       |
| 2f. Solenoid valve                        | 23. Hydraulic motor no. 3 (940602) |                                   |
| 3. Solenoid valve                         | 24. Valve - diverter               |                                   |
| 4. Valve, manual lift override            | 25. Hydraulic motor no. 5 (910696) |                                   |
| 5. Solenoid valve                         | 26. Valve - diverter               |                                   |
| 6. Check valve                            | 27. Hydraulic motor no. 1 (940602) |                                   |
| 7. Hydraulic cylinder no. 1 (66-06-001w)  | 28. Valve - diverter               |                                   |
| 8. Hydraulic cylinder no. 2 (74-06-012w)  | 29. Hydraulic motor no. 7 (910696) |                                   |
| 9. Hydraulic cylinder no. 3 (66-06-001w)  | 30. Pressure relief valve 250 bar  |                                   |
| 10. Hydraulic cylinder no. 4 (74-06-058w) |                                    |                                   |
| 11. Hydraulic cylinder no. 5 (63-06-001w) |                                    |                                   |
| 12. Hydraulic cylinder no. 6 (74-06-012w) |                                    |                                   |
| 13. Hydraulic cylinder no. 7 (66-06-001w) |                                    |                                   |
| 14. Hydraulic cylinder, rotary valve      |                                    |                                   |
| 15. Rotary valve block                    |                                    |                                   |
| 16. Valve, diverter                       |                                    |                                   |

G031066