



Solenoid Shutoff Kit

320-D Compact Utility Loader

Model No. 131-0569

Form No. 3395-202 Rev A

Installation Instructions

⚠ WARNING

CALIFORNIA Proposition 65 Warning

This product contains a chemical or chemicals known to the State of California to cause cancer, birth defects, or reproductive harm.

Installation

Loose Parts

Use the chart below to verify that all parts have been shipped.

Procedure	Description	Qty.	Use
1	No parts required	–	Open the rear access cover.
2	No parts required	–	Remove the existing fuel-stop solenoid and speed-control plate.
3	Speed control plate Fuel stop solenoid Bolt Jumper harness	1 1 2 1	Install the kit.

1

Opening the Rear Access Cover

No Parts Required

Procedure

1. Stop the engine.
2. Remove the bolt located next to the right swell latch (Figure 1).

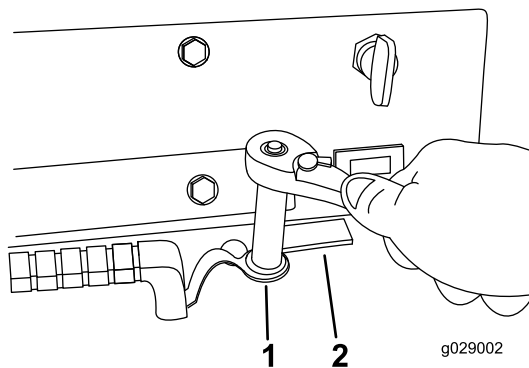


Figure 1

1. Remove this bolt.
2. Right swell latch



- Release the 2 swell latches ([Figure 2](#)).

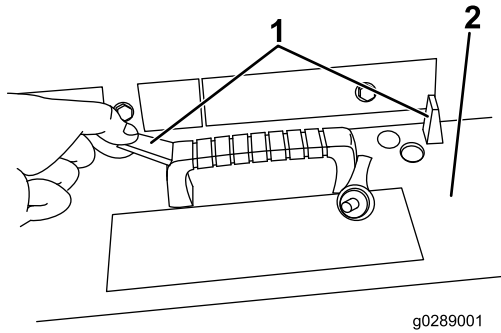


Figure 2

- Swell latch
- Rear access cover

- Grasp the handle and pull the rear access cover up and then back to swing it open.

2

Removing the Existing Fuel-Stop Solenoid and Speed-Control Plate

No Parts Required

Removing the Existing Fuel Stop

- Remove both upper and lower cotter keys securing the solenoid-stop arm to the engine-stop lever ([Figure 3](#) and [Figure 4](#)).

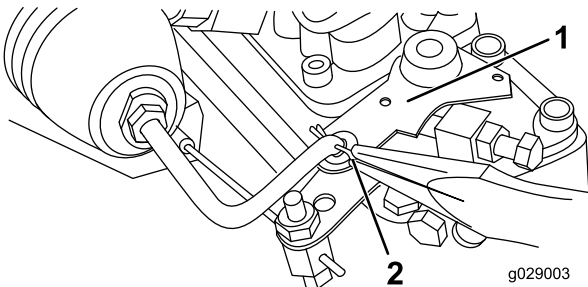


Figure 3

- Solenoid-stop arm
- Upper cotter key

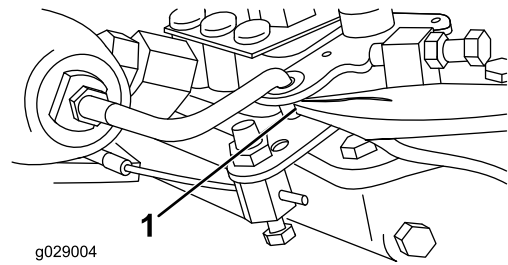


Figure 4

- Lower cotter key

- Separate the solenoid-stop arm from the engine-stop lever ([Figure 5](#)).

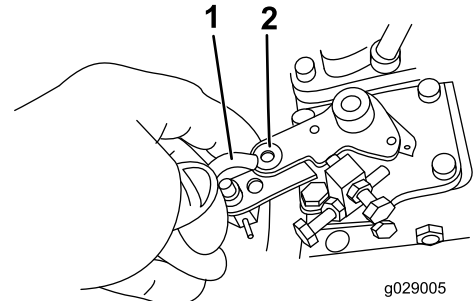


Figure 5

- Engine-stop lever
- Washer

- Discard the washer ([Figure 5](#)).
- Remove the nut securing the throttle-cable swivel to the speed-control lever ([Figure 6](#)).

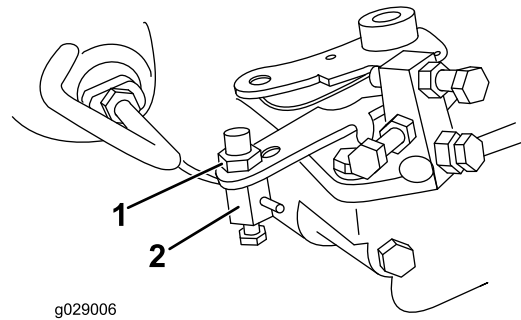


Figure 6

- Nut
- Throttle cable swivel

- Disconnect the throttle-cable swivel from the speed-control lever.

- Remove the 2 bolts and nuts securing the fuel-stop solenoid to its mount (Figure 7).

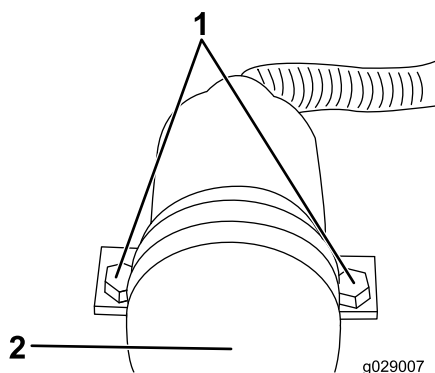


Figure 7

- Bolt
- Fuel-stop solenoid

- Unplug the fuel-stop solenoid wiring harness from the main wire harness plug connector (Figure 8).

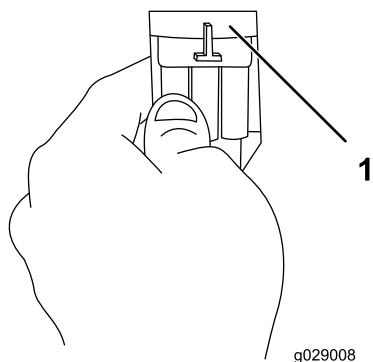


Figure 8

- Fuel-stop solenoid wire harness

- Slide the fuel-stop solenoid back and then up and out from its mounting location.

Removing the Existing Speed-Control Plate

- Remove the 4 bolts and 2 washers securing the existing speed-control plate to the engine (Figure 9).

Note: Retain the hardware. You will use them to install the replacement speed-control plate.

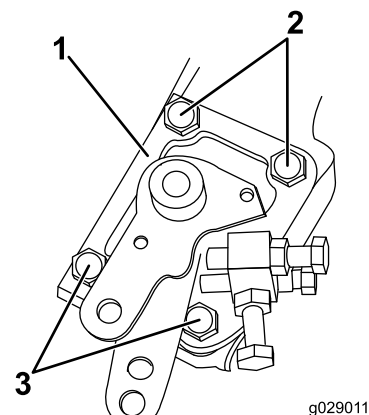


Figure 9

- Speed-control plate
- Bolt with washer
- Bolt without washer

- Pull out the speed-control plate enough to disconnect the governor spring from the governor lever (Figure 10).

CAUTION

Disconnect the governor spring from the governor lever prior to completely removing the speed control plate.

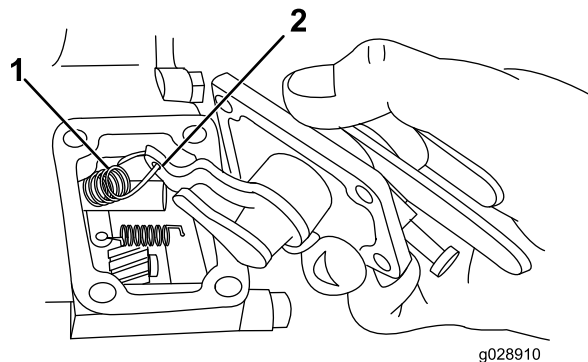


Figure 10

- Governor spring
- Governor lever
- Completely remove the speed-control plate from the engine.

3

Installing the Kit

Parts needed for this procedure:

1	Speed control plate
1	Fuel stop solenoid
2	Bolt
1	Jumper harness

Installing the New Speed-Control Plate

1. Hook the governor spring to the governor lever of the replacement speed-control plate (see [Figure 10](#)).
 2. Install the speed-control plate using the original 4 bolts and 2 washers (see [Figure 9](#)).
- Note:** Ensure the washers are installed with the bolts as shown in [Figure 9](#)
3. Torque the bolts to 8.1 N-m (6 ft-lb).

Installing the Fuel-Stop Solenoid

1. Remove the air filter cover.
2. Position the replacement fuel-stop solenoid and **loosely** secure it with 2 bolts ([Figure 11](#)).

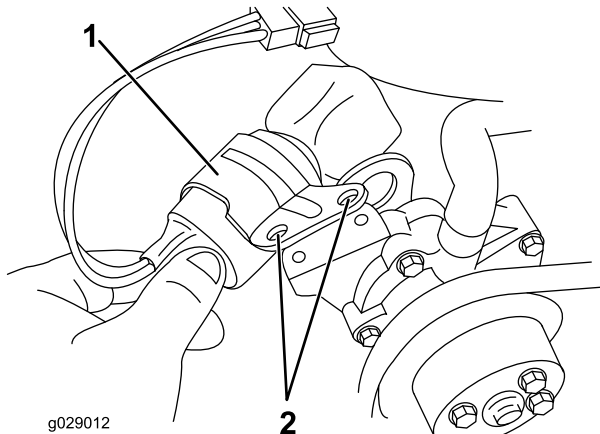


Figure 11

1. Replacement fuel-stop solenoid
2. Hole

3. Apply thread locker to the 2 bolts.

4. Connect the jumper harness to the fuel-stop solenoid plug connector ([Figure 12](#)).

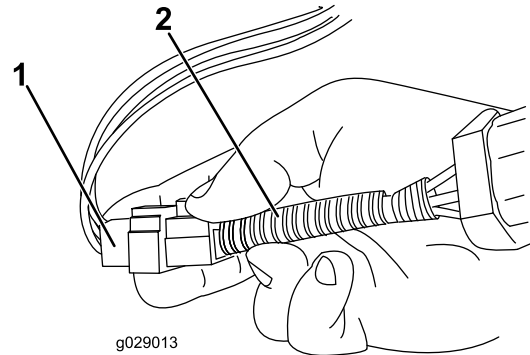


Figure 12

1. Fuel-stop solenoid plug connector
2. Jumper harness connector

5. Route the other end of the jumper harness under the radiator hose and then plug it into the main wire harness ([Figure 13](#)).

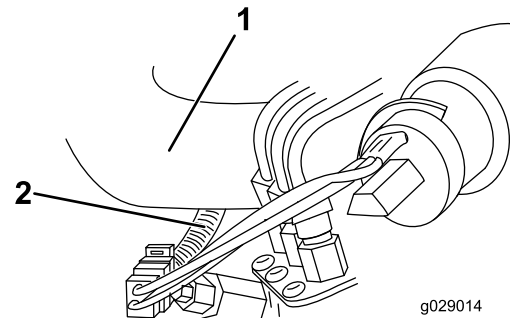


Figure 13

1. Radiator hose
2. Jumper harness

6. Position the fuel-stop solenoid so the plunger pin aligns with the engine-stop-lever hook ([Figure 14](#)).

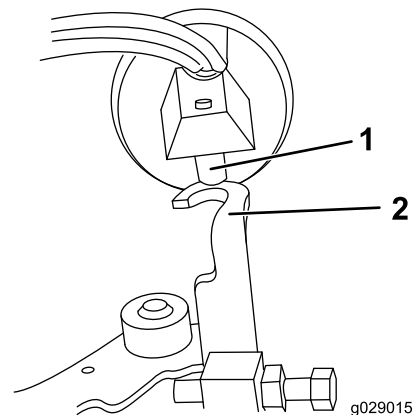


Figure 14

1. Plunger pin
2. Engine-stop-lever hook

7. Manually push the solenoid plunger away from the fuel distributor until it is fully extended from its housing (Figure 15).

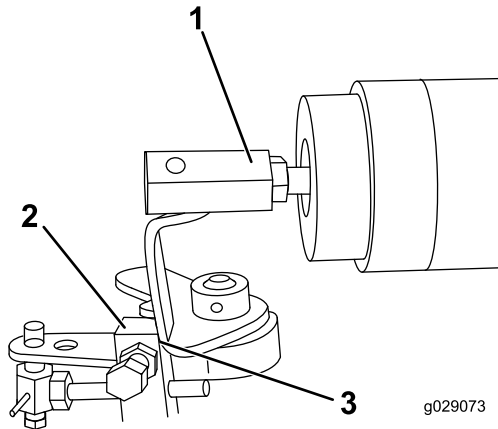


Figure 15

- | | |
|---------------------|---|
| 1. Solenoid plunger | 3. Stop lever resting against the fuel-distributor housing stop |
| 2. Fuel distributor | |

-
8. Install the ignition key and turn the switch to the ON position, but **do not start the machine**.
 9. Stop manually extending the solenoid plunger.
Note: The hold coil will keep the solenoid plunger extended electrically.
 10. With the solenoid plunger electrically extended, slide the engine stop solenoid toward the fuel distributor until the engine stop lever rests against the stop on the fuel-distributor housing (Figure 15).
 11. Hold the fuel-stop solenoid in position, apply thread locker to the 2 bolt securing the fuel-stop solenoid, and torque them to 19 N-m (14 ft-lb).
Note: Ensure that the fuel-stop solenoid is in the same position after the adjustment made in step 6.
 12. Turn the ignition key to the OFF position.
 13. Install the air filter cover.
 14. Start and run the machine to confirm proper operation.
 15. Swing the rear access cover up, seat it into place, and secure with the 2 swell latches and bolt.

Notes:

Notes:



Count on it.