



Transmission Filter Kit

RT1200 Traction Unit

Model No. 131-2813

Form No. 3395-439 Rev A

Installation Instructions

⚠ WARNING

CALIFORNIA Proposition 65 Warning

This product contains a chemical or chemicals known to the State of California to cause cancer, birth defects, or reproductive harm.

Installation

Loose Parts

Use the chart below to verify that all parts have been shipped.

Description	Qty.	Use
No parts required	—	Prepare the machine.
Filter	1	Change the transmission filter.
No parts required	—	Check the transmission filter for leaks.

Preparing the Machine

1. Park the machine on a level surface.
2. Lower all attachments, stop the engine, and remove the key.
3. Remove the right-side panel; refer to *Operator's Manual* for the machine.
4. Rotate the BATTERY-DISCONNECT switch to the Off position; refer to *Operator's Manual* for the machine.
5. Allow the machine to cool 10 to 20 minutes.

Changing the Transmission Filter

Changing the Filter

Note: You can access the transmission filter from underneath the right side of the machine, inboard of the hydraulic tank.

1. Place a drain pan under the transmission-oil filter (Figure 1).



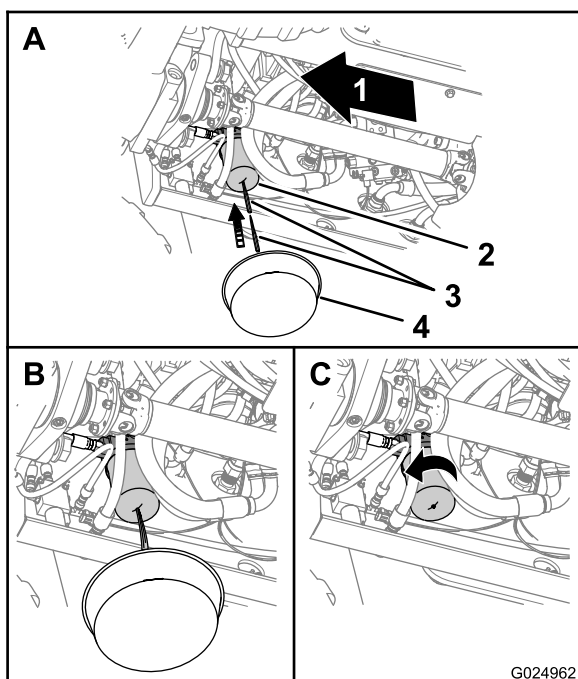


Figure 1

- | | |
|----------------------------|-----------------|
| 1. Forward | 3. Sharp object |
| 2. Transmission-oil filter | 4. Drain pan |

2. Puncture the bottom of the transmission filter, and allow the residual hydraulic fluid to drain into the drain pan ([Figure 1](#)).

Note: Use a tapered-center punch or awl to puncture the case of the filter.

3. Remove the transmission filter with a filter wrench and discard the filter ([Figure 1](#)).
4. Wipe clean the oil filter adapter at the seating surface for the filter.
5. Apply a thin layer of the specified transmission fluid onto the O-ring of the new filter; refer to [Checking the Oil Level in the Transmission](#) (page 2).
6. Install the new filter by hand and tighten the filter 1/2 to 3/4 turn after it makes contact with the filter head ([Figure 1](#)).

Important: Do not use a filter strap wrench to tighten the filter. A strap wrench can damage the filter, causing it to leak.

7. Start the engine and run it at idle for 1 minute, and check for leaks.
8. Stop the engine and remove the key.
9. Check the transmission oil level; if the level is low, add oil; refer to [Checking the Oil Level in the Transmission](#) (page 2).

Important: When you fill the transmission with oil, slowly add the oil into the transmission to avoid entraining air with the oil.

Checking the Oil Level in the Transmission

Specified transmission oil: Mobilfluid 424

Important: If you operate the machine while the level of the transmission oil is below the recommended level, you may damage the transmission and the parking brake.

1. Rotate the BATTERY-DISCONNECT switch to the On position; refer to *Operator's Manual* for the machine.
2. Start the engine and run it for 10 minutes.
3. Stop the engine and remove the ignition key.
4. Check the transmission filter and filter head for leaks.

Note: Repair all leaks before proceeding to the next step.

5. Wait 10 minutes or more and then check the transmission oil level in the sight gauge ([Figure 2](#)).

Note: The oil level should cover 1/2 to 3/4 of the sight-gauge window.

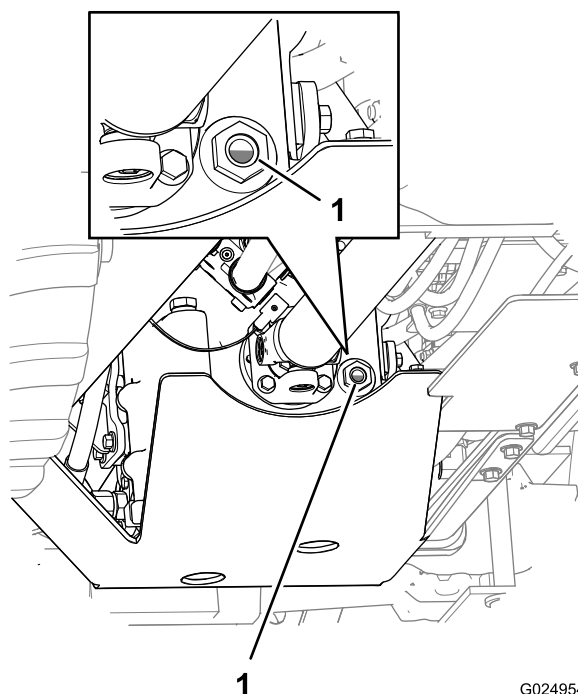


Figure 2

1. Sight gauge

6. If the oil level is low, perform the following:
 - A. Remove the fill plug from the fill port of the transmission ([Figure 3](#)).

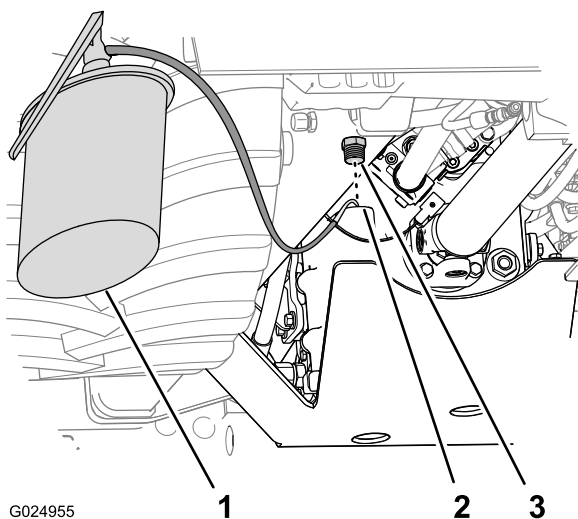


Figure 3

- | | |
|----------------------------|--------------|
| 1. Oil-servicing equipment | 3. Fill plug |
| 2. Fill port | |

- B. Clean the threads of the plug.
- C. Apply PTFE thread sealing tape to the threads of the plug.
- D. Fill the transmission with the specified oil through the fill port until the oil level covers $\frac{1}{2}$ to $\frac{3}{4}$ of the sight-gauge window (Figure 2 and Figure 3).

Important: When you fill the transmission with oil, slowly add the oil into the transmission to avoid entraining air with the oil.

- E. Install the fill plug into the fill port securely (Figure 3).
 7. Start the engine and run it for 10 minutes.
 8. Stop the engine and remove the ignition key.
 9. Wait 10 minutes and then check the transmission oil level in the sight gauge (Figure 2).
- Note:** The oil level should cover $\frac{1}{2}$ to $\frac{3}{4}$ of the sight-gauge window.
10. If the oil level is low, repeat steps 6 through 9 until the oil level covers $\frac{1}{2}$ to $\frac{3}{4}$ of the sight-gauge window.

Installing the Side Panel

Install the right-side panel; refer to *Operator's Manual* for the machine.



Count on it.