



PART NO. 92-8948

**INSTALLATION  
INSTRUCTIONS**
**SOFT TRACTION PEDAL KIT  
GROUNDMASTER 117 & PROLINE 118**

## LOOSE PARTS CHART

**Note:** Use this chart as a checklist to make sure all parts have been received. Without these parts, total set-up cannot be completed.

DESCRIPTION	QTY.	USE
Traction Plate	1	Pre-assemble Traction Plate
Bolt-5/16-18x11/2	1	
Bolt-5/16-18x11/4	1	
Nut-5/16-18	4	
Swing Arm Assembly	1	Pre-assemble Swing Arm
Bolt-5/16-18x11/4	1	
Lock Nut-5/16-18	1	
Bearing	2	
Spacer-Thick	1	
Washer	1	
Adjusting Stud	1	Install Swing Arm
Washer-5/16	2	
Washer-7/8	1	
Lock Nut-5/16	1	
Bolt-3/8-16x3	2	Install Traction Plate
Lock Washer-3/8	2	
Traction Lever	1	Install Traction Lever
Lock Nut-1/2-13	1	
Screw-6-32x11/2	2	Mount Interlock Switch
Nut-6-32	2	
Spacer	2	
Spring Bracket	1	Install Spring Bracket
Spring	1	
Nut-5/16-18	1	
	1	

# INSTRUCTIONS

## REMOVE EXISTING LINKAGE (Fig. 1)

1. Park mower on a level surface and raise cutting unit to transport position. Block carrier frame up with a jack stand.

2. Turn off ignition and remove spark plug wire(s). Disconnect battery cables and remove air filter hose.

3. Remove safety interlock switch from traction plate and move to the side. (Discard mounting hardware only).

**Note: Do not disconnect switch leads. Move switch to the side and let hang.**

4. Remove ball joint from traction lever. (Save lock nut for re-use).

**Note: Do not loosen or adjust ball joint on traction cable. Only remove from traction lever.**

5. Remove traction lever and traction plate from hydrostatic pump. (Discard lever and mounting hardware).

**Note: Save woodruff key in hydrostatic pump shaft for re-use.**

**Note: Puller may be required to remove traction lever from hydrostatic pump shaft.**

6. Loosen belt adjuster for hydrostatic drive belt for access to traction control mounting bolts. Refer to Operator's Manual—Belt Adjustment.

7. Remove traction control from hydrostatic pump. (Discard traction control and mounting hardware).

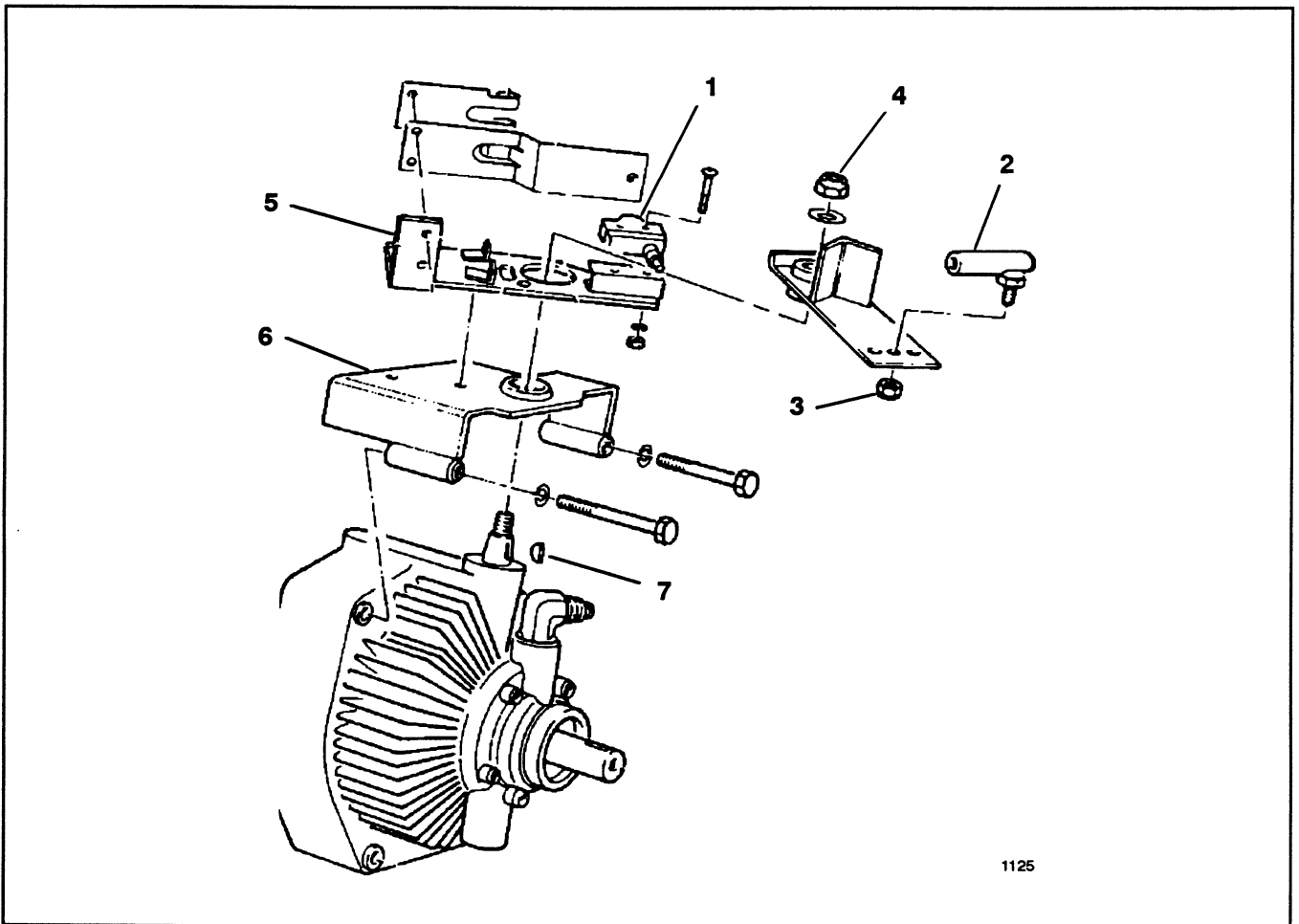


Figure 1

- 1 Safety switch
- 2 Ball joint
- 3 Lock nut

- 4 Traction lever
- 5 Traction plate

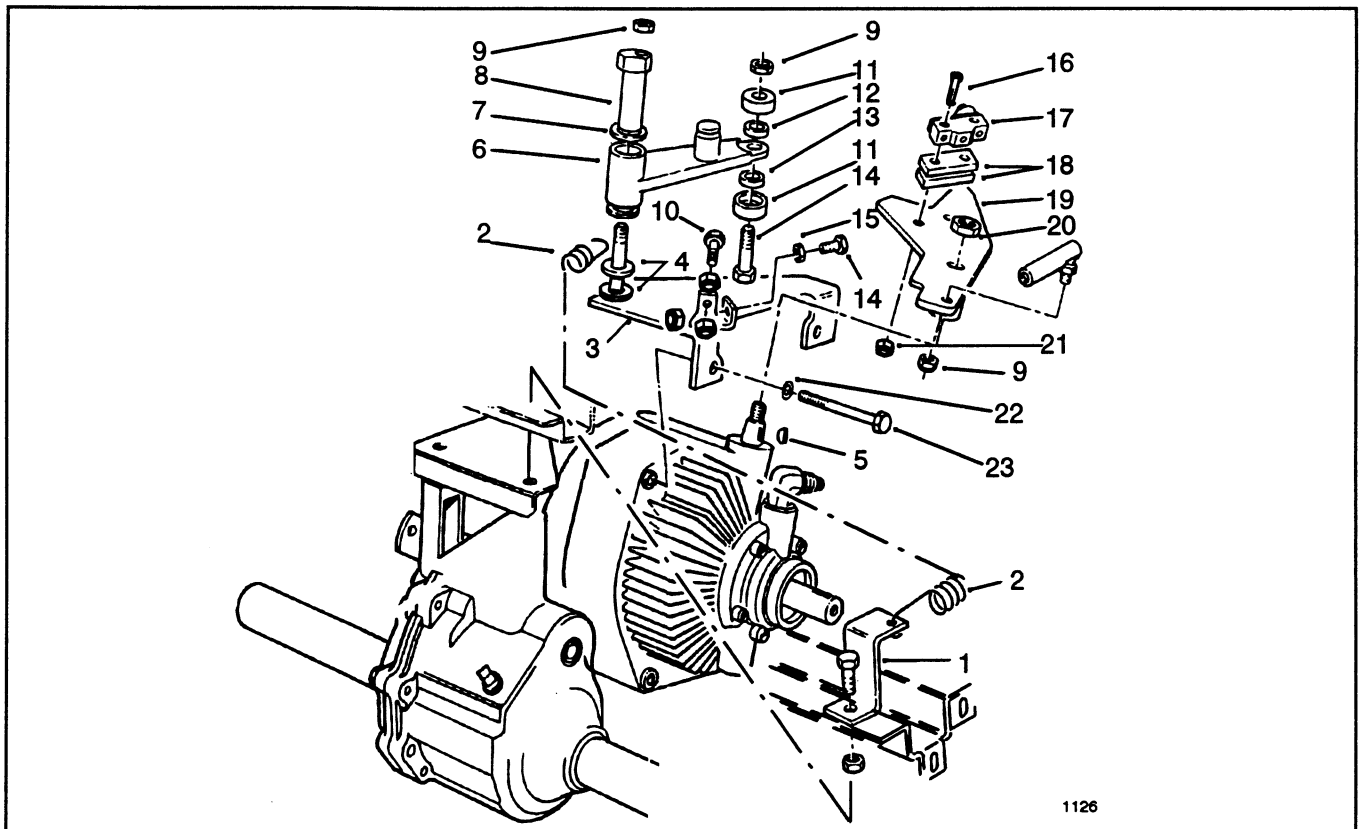
- 6 Traction control
- 7 Woodruff key

## INSTALL NEW LINKAGE (Fig. 2)

1. Pre-assemble swing arm assembly with (2) bearings located with washer and spacer (thick). Secure with 5/16-18x11/2 bolt and lock nut.
2. Pre-assemble traction plate with reverse 5/16-18x11/2 bolt and (2) nuts. Thread first nut until the end of threads, install into linkage plate and secure with second nut. Install forward 5/16-18x11/4 bolt and (2) nuts. Let nuts loose for adjustment later.
3. Slide large ID washer onto adjusting stud and instal swing arm assembly to linkage plate with adjusting stud, (2) washers, and lock nut. Let lock nut loose for adjustment later.
4. Install traction plate onto hydrostatic pump with (2) 3/8-16x3 bolts and lock washers. Torque bolts to 40-50 in.-lb. (4.5-5.6 N.m)
5. Mount interlock switch onto traction lever with (2) 6-32x11/2 screws down through switch, (2) spacers and traction lever. Secure with nuts.

**Note:** Route wires from safety interlock switch so they do not interfere with any moving linkages.

6. Check that woodruff key is in hydrostatic pump shaft and install traction lever. Secure with new lock nut. Torque nut to 80-100 ft.-lb. (108-135 N.m).
7. Secure ball joint, on traction cable, to traction lever with previously removed lock nut.
8. Remove left side bolt in frame member and install spring bracket. Secure with existing bolt and new lock nut.
9. Install return spring between spring bracket and swing arm.
10. Install and adjust belt tightener for hydrostatic drive belt. Refer to Operator's Manual for instructions.
11. Install air filter hose between carburetor and filter box.
12. Connect battery cables.



**Figure 2**

- |                      |                              |                    |
|----------------------|------------------------------|--------------------|
| 1 Spring bracket     | 9 Lock nut-5/16-18           | 17 Switch          |
| 2 Spring             | 10 Forward stop-5/16-18x11/4 | 18 Spacer          |
| 3 Traction plate     | 11 Bearing                   | 19 Traction lever  |
| 4 Washer             | 12 Spacer thick              | 20 Lock nut-1/2-13 |
| 5 Woodruff key       | 13 Spacer thin               | 21 Nut -6-32       |
| 6 Swing arm assembly | 14 Rev. stop-5/16-18x11/2    | 22 Lock washer     |
| 7 Washer             | 15 Jam nut-5/16-18           | 23 Screw-3/8-16x3  |
| 8 Adjusting stud     | 16 Screw- 6-32x11/2          |                    |

## ADJUST TRACTION LEVER STOP

1. To adjust hold traction control pedal in full forward position.
2. Thread forward stop bolt, on traction plate, until it just contacts the traction lever, then turn out one additional turn. Tighten jam nuts when adjustment is complete.
3. Check that traction lever contacts stop bolt before internal stop of hydrostatic pump.

## ADJUST FOR NEUTRAL

The machine must not creep when traction pedal is released. If it does creep, an adjustment is required.

1. Park machine on a level surface, lower cutting unit and shut engine off. Disengage the PTO and engage the parking brake.
2. Jack up front of machine until tires are off shop floor. Support machine with jack stands to prevent it from falling accidentally.
3. Loosen lock nut on adjustment cam (Fig. 3).



### WARNING

Engine must be running so transmission neutral adjustment can be performed. To guard against possible personal injury, keep hands, feet, face, and other parts of the body away from muffler, other hot parts of the engine and any rotating parts.

4. Start engine and rotate adjusting cam in either direction until wheels stop rotating. Tighten lock nut to secure adjustment.

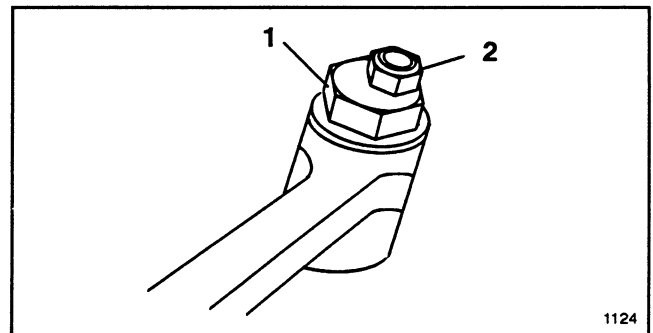


Figure 3

1 Adjusting nut

2 Lock nut

5. Move traction control pedal forward and reverse to check adjustment. Pedal should always return to neutral. Repeat adjustment, if necessary. Stop engine.