



Grass Basket Kit

For Reelmaster® 5010 Series Cutting Units with 5in and 7in Reels

Model No. 03662

Installation Instructions

Installation

Loose Parts

Use the chart below to verify that all parts have been shipped.

Procedure	Description	Qty.	Use
1	Cylinder collar	4	Install the rear lift cylinder limit kit (ordered separately).
	Bolt	4	
	Flanged locknut	8	
	Spacer	2	
	Stop bracket	2	
	Carriage bolt	4	
2	Basket guide	1	Install the basket guides and brackets.
	Basket bracket	1	
	Roll pin	1	
	Washer	1	
	Left-hand torsion-spring (gold)	1	
	Right-hand torsion-spring (black)	1	
	Basket collar	1	
	Flat washer (0.344 x 0.875)	2	
	Bolt (5/16 x 1-1/4 inch)	1	
	Bolt (5/16 x 1/2 inch)	1	
	Plastic washer	1	
3	Cut-off bar	1	Install the cut-off bar.
	Bolt (1/4 x 1-3/4 inches)	4	
	Locknut (1/4 inch)	4	
4	No parts required	—	Remove the 4 grass deflectors.
5	Flanged locknut	2	Remove the support tube (for 5-inch diameter reels only).
6	Basket assembly	1	Mount the basket assembly to the cutting unit.
7	No parts required	—	Adjust the basket position.

Important: To gain additional clearance for the rear baskets when raising the cutting units, install the Rear Lift Cylinder Limit Kit.



1

Installing the Rear Lift Cylinder Limit Kit (Ordered Separately)

Parts needed for this procedure:

4	Cylinder collar
4	Bolt
8	Flanged locknut
2	Spacer
2	Stop bracket
4	Carriage bolt

For 7-inch Diameter Reels

Note: The Rear Lift Cylinder Limit Kit (Toro part no. 110-9604) is ordered separately. Contact an Authorized Toro Dealer to order the kit.

1. Position the traction unit on a level surface, lower the lift arms/cutting units, and stop the machine. Remove the key from the ignition switch to prevent accidental starting.

Important: The Rear Lift Cylinder Limit Kit is only to be mounted on the #2 and #3 (rear) lift arm cylinders.

2. Install the cylinder collars to the extended cylinder rod with 2 bolts and 2 flange locknuts (Figure 1). Make sure the cylinder collars fit over the top of the cylinder.
3. Loosely install the stop bracket to the deflector bracket with 2 carriage bolts and 2 locknuts (Figure 1).
4. Move the stop bracket to the highest position on the bracket and tighten the flange locknuts (Figure 1).

For 5-inch Diameter Reels

Note: The Rear Lift Cylinder Limit Kit (Toro part no. 110-9604) is ordered separately. Contact an Authorized Toro Dealer to order the kit.

1. Position the traction unit on a level surface, lower the lift arms/cutting units, and stop the machine. Remove the key from the ignition switch to prevent accidental starting.

Important: The Rear Lift Cylinder Limit Kit is only to be mounted on the #2 and #3 (rear) lift arm cylinders.

2. Install the cylinder collars and the spacer to the extended cylinder rod with 2 bolts and 2 flange locknuts (Figure 1). Make sure the cylinder collars fit

over the top of the cylinder and the spacer is flush with the cylinder end.

3. Loosely install the stop bracket to the deflector bracket with 2 carriage bolts and 2 locknuts (Figure 1).
4. Move the stop bracket to the lowest position on the bracket and tighten the flange locknuts (Figure 1).

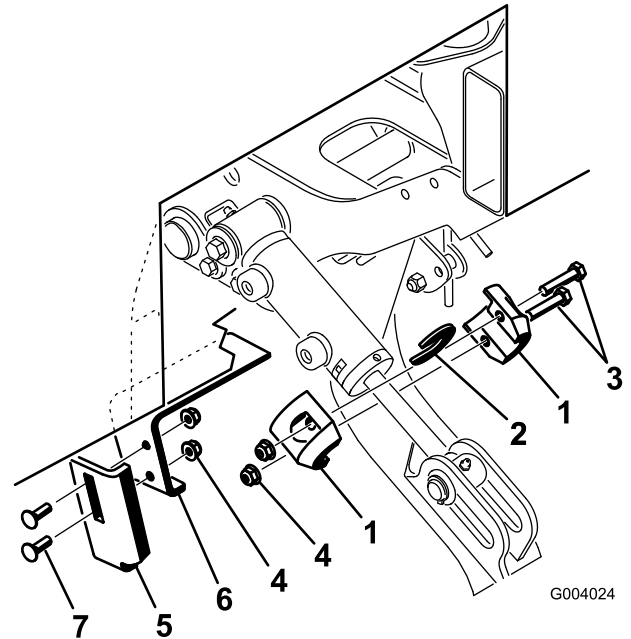


Figure 1

- | | |
|--------------------|----------------------|
| 1. Cylinder collar | 5. Stop bracket |
| 2. Spacer | 6. Deflector bracket |
| 3. Bolt | 7. Carriage bolt |
| 4. Flange locknut | |

2

Installing the Basket Guides and Brackets

Parts needed for this procedure:

1	Basket guide
1	Basket bracket
1	Roll pin
1	Washer
1	Left-hand torsion-spring (gold)
1	Right-hand torsion-spring (black)
1	Basket collar
2	Flat washer (0.344 x 0.875)
1	Bolt (5/16 x 1-1/4 inch)
1	Bolt (5/16 x 1/2 inch)
1	Plastic washer

Procedure

1. Remove the cutting units from the cartons. Assemble and adjust them according to the *Operator's Manual* for the cutting unit.
2. Use [Figure 2](#) to determine the locations where the basket guides or basket brackets must be mounted to the cutting-unit carrier-frames.

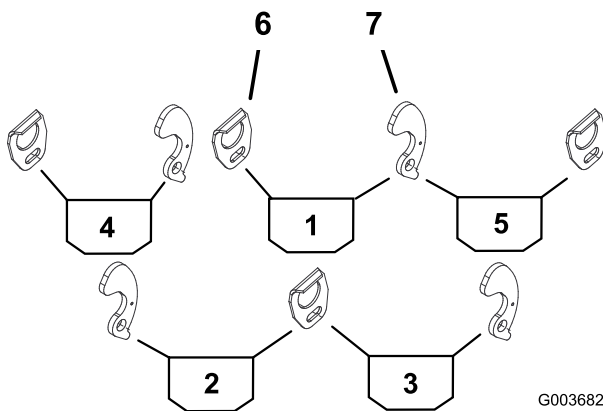


Figure 2

1. Center basket
2. Left, rear basket
3. Right, rear basket
4. Left, front basket
5. Right, front basket
6. Basket guide
7. Basket bracket

3. Mount a basket guide to the appropriate side of each cutting unit carrier frame ([Figure 2](#)) with a bolt (5/16 x

1/2 inch) and flat washer (0.344 x 0.875). Position the components as shown in [Figure 3](#).

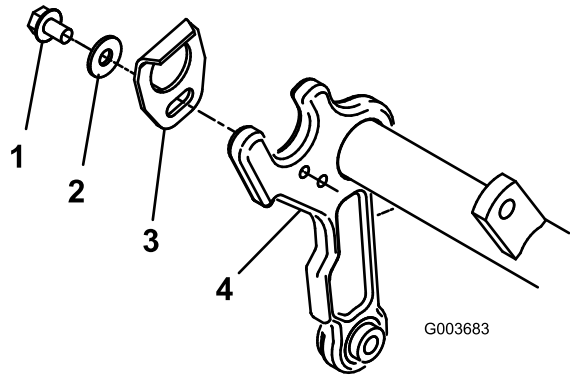


Figure 3

1. Carrier frame
2. Basket guide
3. Flat washer (0.344 x 0.875)
4. Bolt (5/16 x 1/2 inch)

4. Install a roll pin into the lower hole in the appropriate side of each cutting unit carrier frame ([Figure 4](#)). The end of the roll pin should be flush with the inner side of the carrier frame.

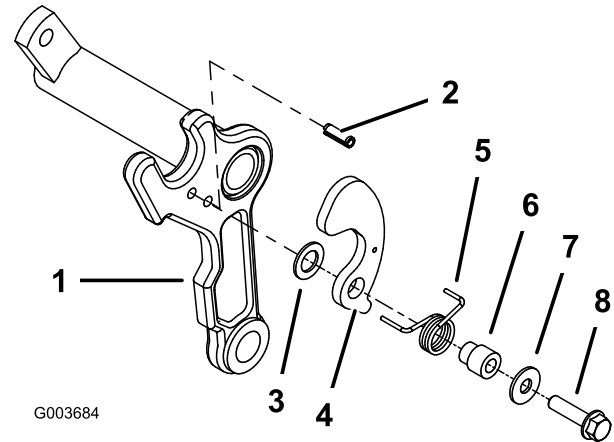


Figure 4

1. Carrier frame
2. Roll pin
3. Plastic washer
4. Basket bracket
5. Torsion spring (left hand shown)
6. Basket collar
7. Flat washer (0.344 x 0.875)
8. Bolt (5/16 x 1-1/4 inch)

5. On the same side of the carrier frame that the roll pin is installed, mount a plastic washer, basket bracket, torsion spring, basket collar, flat washer (0.344 x 0.875) and bolt (5/16 x 1-1/4 inches) ([Figure 4](#)).

Note: The plastic washer, basket bracket, and torsion spring fit onto the basket collar.

The gold torsion spring is for the left-hand side of the carrier frame and the black spring is for the right-hand side of the carrier frame. The longer leg of the spring is to be positioned around the front of the carrier frame

and the shorter, rear leg of the spring is to be inserted into the hole in the basket bracket.

6. Check if the bracket basket rotates freely.

Important: The plastic washer must be installed onto the basket collar to prevent binding.

3

Installing the Cut-off Bar

Parts needed for this procedure:

1	Cut-off bar
4	Bolt (1/4 x 1-3/4 inches)
4	Locknut (1/4 inch)

Procedure

1. Loosely mount the cut-off bar to the cutting unit frame with 4 bolts (1/4 x 1-3/4 inches) and 4 locknuts (1/4 inch) (Figure 5).

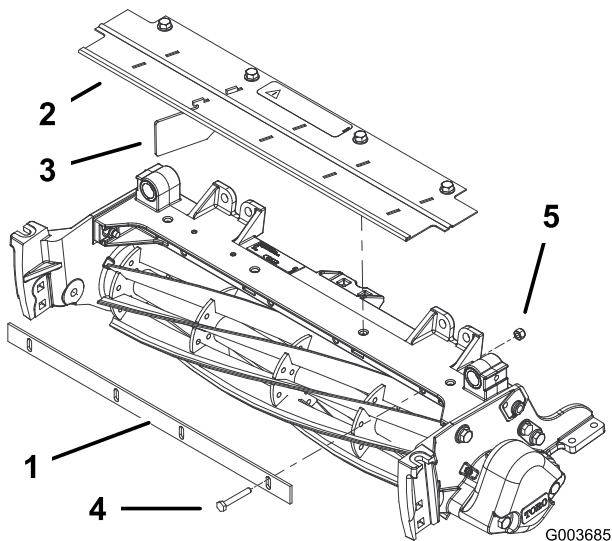


Figure 5

- | | |
|-----------------|------------------------------|
| 1. Cut-off bar | 4. Bolt (1/4 x 1-3/4 inches) |
| 2. Grass shield | 5. Locknut (1/4 inch) |
| 3. Deflector | |

2. Insert a 0.060 feeler gauge between the top of the reel and the bottom of the cut-off bar to check clearance. Make sure the bar and reel are equal distance apart across the full length of the reel.

Note: The cut-off bar must not contact the reel during operation.

3. Tighten the bolts and locknuts (Figure 5).

4

Removing the 4 Grass Deflectors

No Parts Required

Procedure

1. Remove the 4 flange-head bolts securing the front grass-shield to the cutting-unit frame (Figure 5). Remove the grass shield.
2. Remove 4 deflectors from the shield leaving only the 1 shown in Figure 5.
3. Install the grass shield.

5

Removing the Support Tube (For 5-inch Diameter Reels Only)

Parts needed for this procedure:

2	Flanged locknut
---	-----------------

Procedure

1. Unthread the 2 flange-head bolts securing the support tube and the cutting-unit carrier-frame to the cutting-unit side-plates (Figure 6). Remove the support tube.

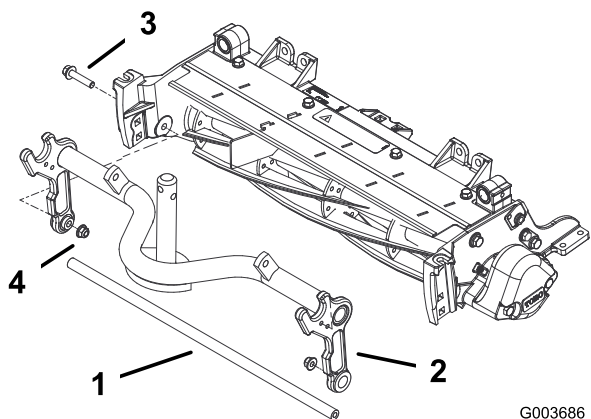
Note: Do not pull the bolts all the way out of the carrier frame.

6

Mounting the Basket Assembly to the Cutting Unit

Parts needed for this procedure:

1	Basket assembly
---	-----------------



G003686

Figure 6

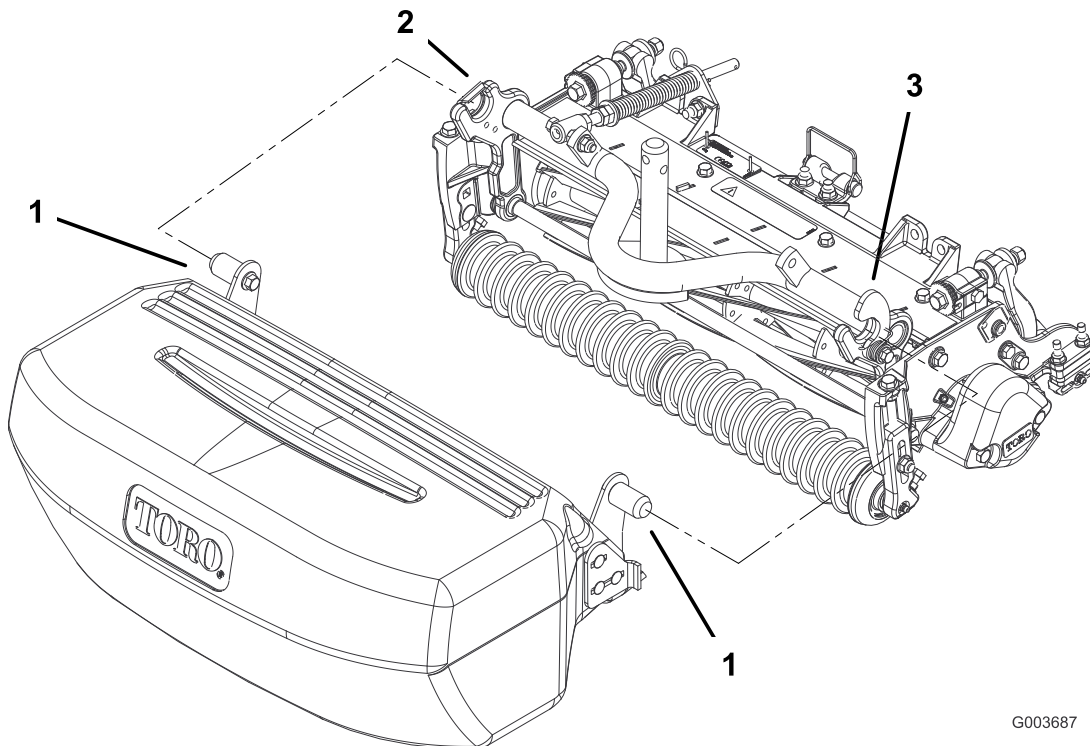
1. Support tube
2. Carrier frame
3. Flange-head bolt
4. Flanged locknut (3/8 inch)

2. Secure the carrier frame to the cutting-unit side-plates with 2 flanged locknuts (3/8 inch) (Figure 6).

Procedure

Mount a basket to each cutting-unit carrier-frame by inserting the basket-mounting pin into the basket-guide bracket and depressing the opposite mounting pin into the pivoting-basket bracket (Figure 7).

Important: Ensure that the front of the basket does not contact the reel. If there is contact, refer to [7 Adjusting the Basket Position](#) (page 6).



G003687

Figure 7

1. Basket-mounting pin
2. Basket guide
3. Pivoting-basket bracket

7

Adjusting the Basket Position

No Parts Required

Procedure

Make sure that the basket is parallel to the cutting unit with a minimum clearance of 6 mm (0.250 inches) between the lip of the basket and the reel. If an adjustment to the basket position is required, proceed as follows:

1. On each side of the basket, loosen the carriage bolt nuts securing the basket-stop brackets to the basket ([Figure 8](#)).

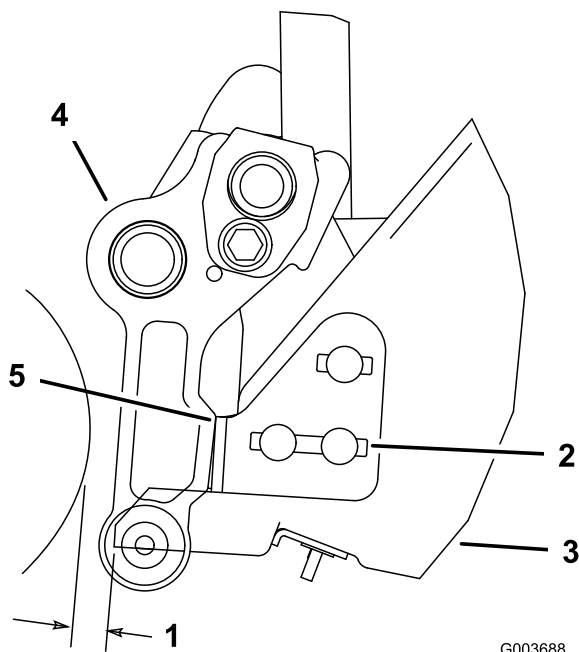


Figure 8

- | | |
|------------------------|----------------------|
| 1. 0.250 clearance | 4. Carrier-frame arm |
| 2. Basket-stop bracket | 5. Contact point |
| 3. Basket | |
-
2. Position the basket so it is parallel to the cutting unit with a minimum clearance of 6 mm (0.250 inches) between the lip of the basket and the reel ([Figure 8](#)).
 3. On each side of the basket, adjust the basket-stop brackets so they each contact a carrier-frame arm.
 4. Tighten the carriage-bolt nuts to secure the basket position.

Notes:



Count on it.