



PART NO. 94-3664

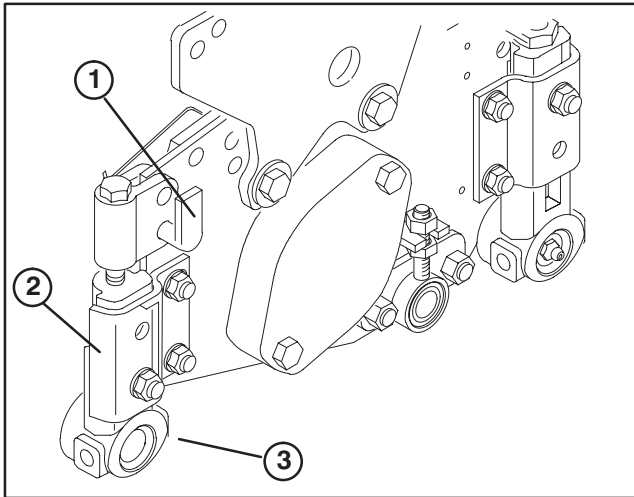
INSTALLATION  
INSTRUCTIONS

## CUTTING UNIT SKID KIT

### Reelmaster® 2300D

**Note:** When operating with skids, cutting units to be equipped with Fixed Cutting Unit Kits, Part No. 93-6915.

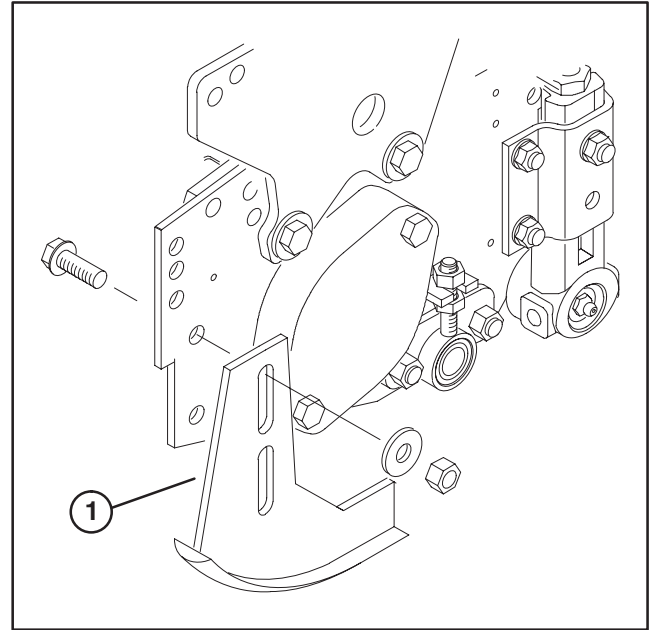
1. Remove height-of-cut pins, roller brackets and angle brackets mounted to front of each cutting unit (Fig. 1). Retain pins, fasteners and brackets for future applications.



**Figure 1**

1. Height-of-cut pin
2. Angle bracket
3. Roller bracket

2. Using flange head capscrews, washers and locknuts, supplied with kit, loosely secure a skid to the outside of each cutting unit sideplate as shown in figure 2.



**Figure 2**

1. Skid

3. **ADJUSTMENT** — Place cutting unit on a level surface. With cutting unit in desired height-of-cut and rear roller level, adjust skids so there is 1/4" clearance between the level surface and the bottom of the skids. Tighten fasteners.

**Note:** Skid height may have to be re-adjusted to match turf conditions.