



Fender Kit

Groundsmaster 7200 Series Traction Unit

Model No. 117-9170

Installation Instructions

⚠ WARNING

CALIFORNIA Proposition 65 Warning

This product contains a chemical or chemicals known to the State of California to cause cancer, birth defects, or reproductive harm.

Installation

Loose Parts

Use the chart below to verify that all parts have been shipped.

Description	Qty.	Use
Fender mount	1	Install the right fender.
Right fender	1	
Thread-forming screw (5/16 x 5/8 inch)	2	
Bolt (1/4 x 5/8 inch)	2	
Nut (1/4 inch)	2	
Left fender	1	Install the left fender.
Nut (3/8 inch)	2	
Bolt (3/8 x 3/4 inch)	2	

Preparing the Machine

1. Position a suitable floor jack under the rear bumper tube and raise the rear tires off the ground (Figure 1).

Note: Position the jack stands under the rear bumper.

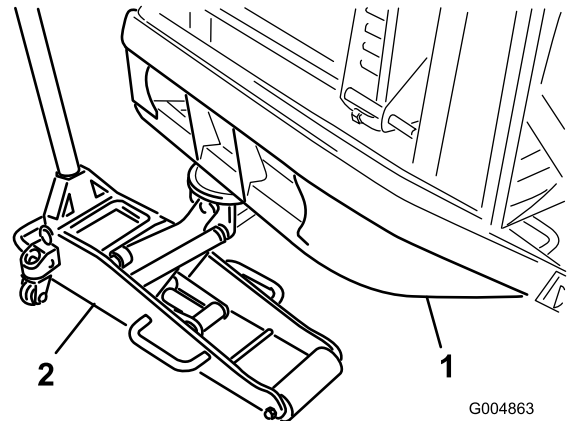


Figure 1

1. Rear bumper tube
2. Floor jack

2. Remove the rear wheels.
3. Remove all debris from the wheel-well area, including any debris caught in the brake assembly.



Installing the Right Fender

1. Remove the bolt securing the hose clamp to the frame channel on the right side of the machine (Figure 2).

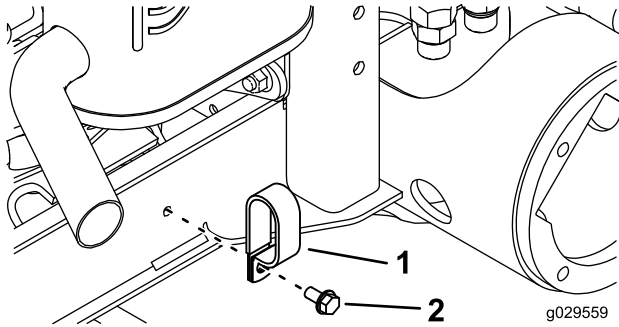


Figure 2

1. Hose clamp
2. Bolt

2. Insert the bottom of the hose clamp through the slot in the top of the fender mount (Figure 3).

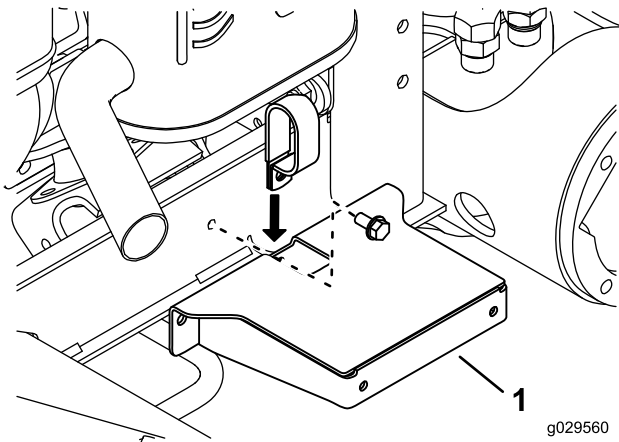


Figure 3

1. Fender mount

3. Loosely mount the hose clamp and fender mount to the frame channel with the bolt previously removed.
4. Position the frame mount horizontally on the frame channel.

5. Use the frame mount as a template to locate and mark the other 2 fender mounting holes in the frame channel (Figure 4).

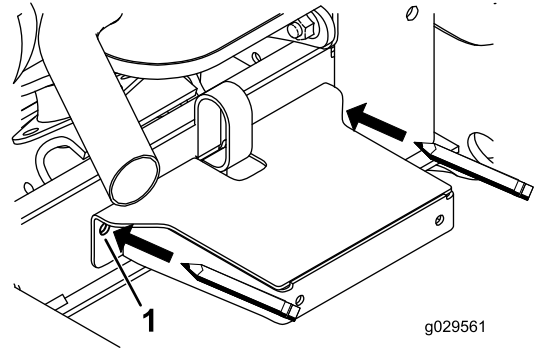


Figure 4

1. Mark here.

6. Remove the bolt and nut securing the clamp and fender mount to the frame (Figure 5).

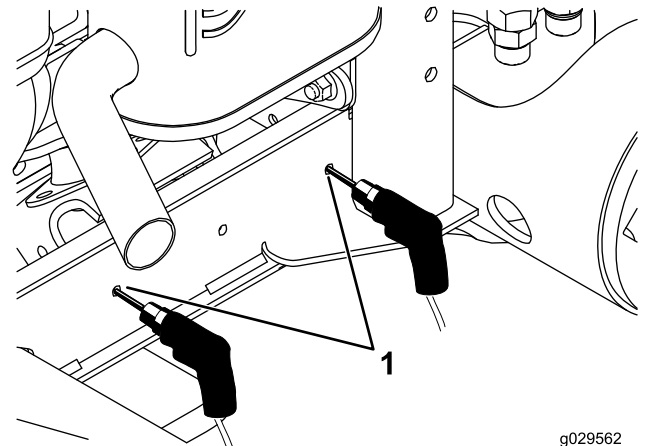


Figure 5

1. Drill here.

7. At the locations that you marked in step 5, drill 2 holes (.281-inch diameter) through the frame channel (Figure 5).
8. Loosely mount the hose clamp and fender mount to the frame channel with the hose clamp, bolt, and nut (see Figure 3).

9. Using the newly drilled holes, secure the fender mount to the frame channel with 2 thread-forming screws (5/16 x 5/8 inch) as shown in [Figure 6](#).

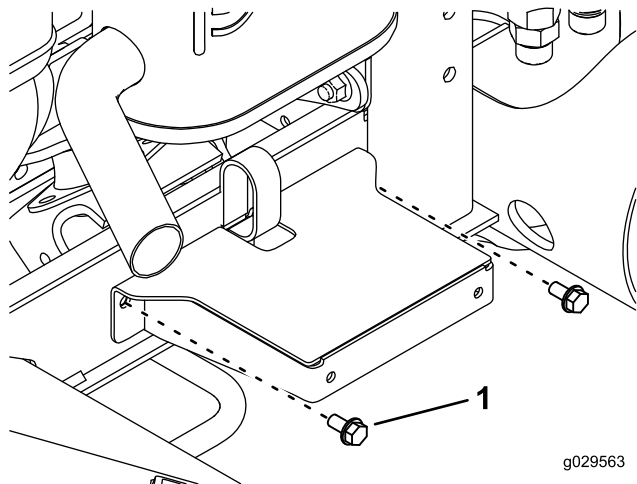


Figure 6

1. Thread-forming screw (5/16 x 5/8 inch)

10. Tighten all the fasteners.
11. Loosely mount the side of the right fender to the fender mount with 2 bolts (1/4 x 5/8 inch) and 2 nuts (1/4 inch) as shown in [Figure 7](#).

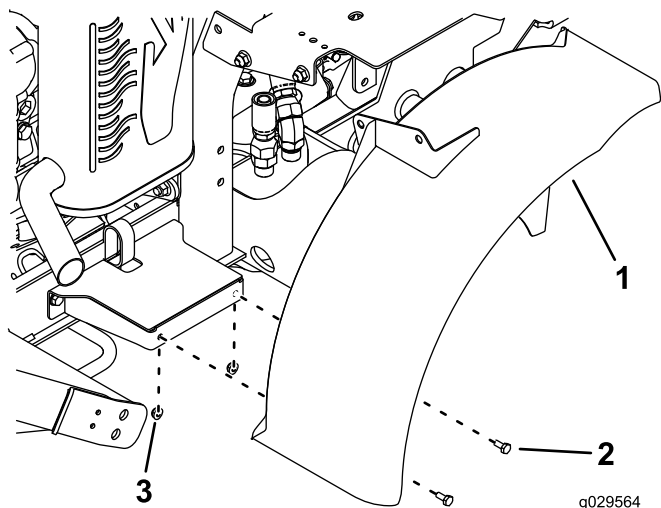


Figure 7

1. Right fender
2. Bolt (1/4 x 5/8 inch)
3. Nut (1/4 inch)

12. Loosely mount the bracket, on the top of the fender, to the fuel tank bracket with 2 bolts (3/8 x 3/4 inch) and 2 flange nuts (3/8 inch) as shown in [Figure 7](#).

Note: Make sure that the fender is not rubbing on the brake rotor and tighten the fasteners.

Installing the Left Fender

1. Disconnect the cable from the negative terminal of the battery.
2. Disconnect the cable from the positive terminal of the battery.
3. Remove the carriage bolt, washer, battery hold-down, and nut securing the battery ([Figure 8](#)).

Note: Retain the hold-down and the fasteners.

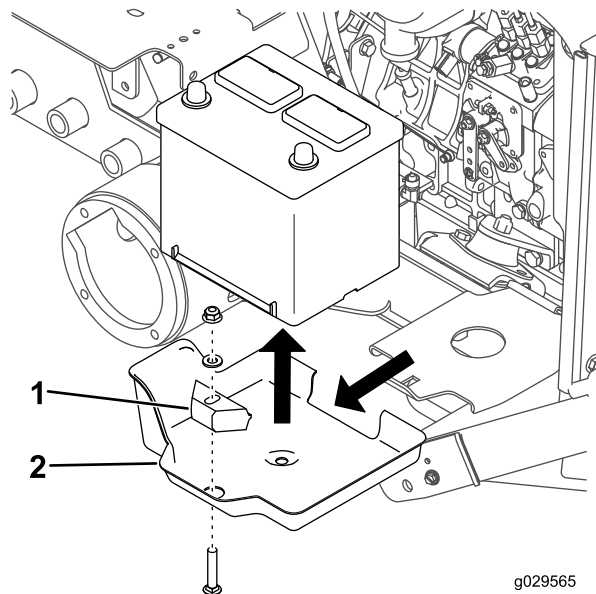


Figure 8

1. Battery hold-down
2. Battery tray

4. Remove the battery from the battery tray ([Figure 8](#)).
5. Remove the battery tray from the battery platform ([Figure 8](#)).

Note: Discard the battery tray.

6. Loosely mount the bracket on the top of the left fender to the fuel-tank bracket with 2 bolts (3/8 x 3/4 inch) and 2 nuts (3/8 inch) as shown in [Figure 9](#).

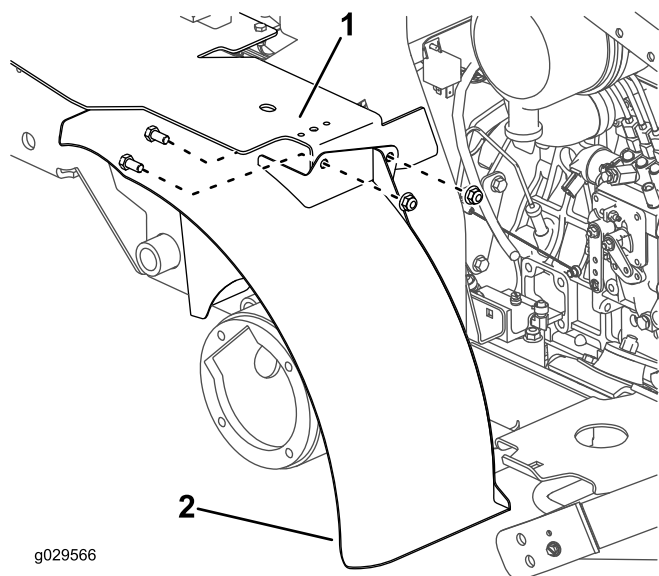


Figure 9

- | | |
|----------------------|----------------|
| 1. Fuel-tank bracket | 2. Left fender |
|----------------------|----------------|

-
7. Position the battery onto the battery platform.
 8. Loosely mount the battery to the battery platform with the carriage bolt, hold-down, washer, and nut that you previously removed ([Figure 10](#)).

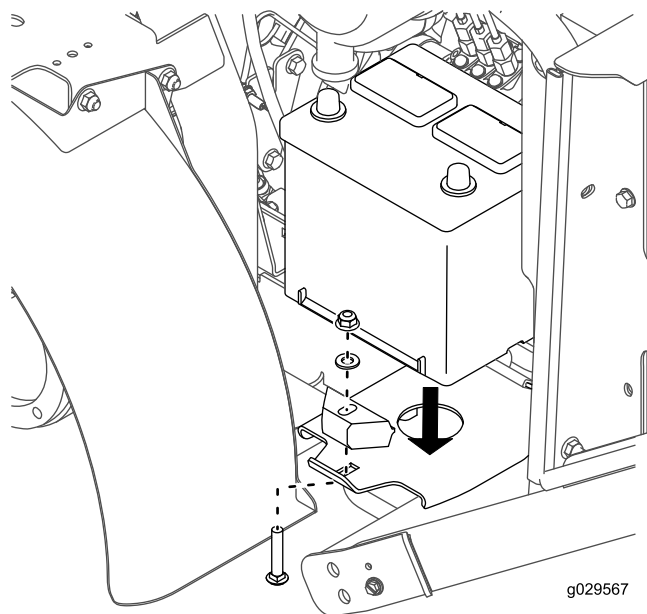


Figure 10

-
9. Tighten the fasteners.
 10. Connect the positive battery cable to the battery, and then connect the negative battery cable to the battery.
 11. Install the drive wheels.
 12. Tighten the lug nuts to 102 to 115 N-m (75 to 85 ft-lb).

13. Remove the jack stands and lower the machine.

Note: Verify that the tires do not rub on the fenders when you drive the machine.