



PART NO. 94—9100

INSTALLATION
INSTRUCTIONS
CE COMPLIANCE KIT
GREENS AERATOR®

SAFETY AND INSTRUCTION DECALS

THE FOLLOWING DECALS AND GUARDS ARE TO BE INSTALLED ON THE GREENS AERATOR®. USE THE LOCATION DESCRIPTION LISTED BELOW TO DETERMINE THE CORRECT PLACEMENT ON THE PRODUCT. BEFORE INSTALLING DECALS, REMOVE OR THOROUGHLY CLEAN THE ENGLISH DECAL, AND APPLY THE APPROPRIATE TRANSLATED LANGUAGE VERSION IN ITS PLACE (OR OVER IT).

ONLY USE DECALS THAT REPLACE EXISTING DECALS ON MACHINE.
DISCARD UNUSED DECALS.

SHOULD ANY OF THESE DECALS OR GUARDS BECOME DAMAGED OR ILLEGIBLE, REPLACE THEM IMMEDIATELY. EACH PART NUMBER IS LISTED BELOW, AND ALSO ON EACH DECAL. REPLACEMENTS MAY BE ORDERED THROUGH YOUR AUTHORIZED TORO DISTRIBUTOR.

ENGLISH PARTS DESCRIPTION	LOCATION	ENGLISH PART NO.	EUROPEAN PART NO.	QTY.
Decal C.E.	—	—	93—7252	1
Decal Danger	Coring Head Cover	59—9930	93—9884	1
Decal Refueling	Fuel Tank	27—7310	93—7822	1
Decal Shift	Air Cleaner Cover	66—9050	93—9887	1
Decal Start	Air Cleaner Cover	66—9110	93—9888	1
Decal Break—In	Fuel Tank	94—8076	93—9892	1
Decal Danger	Battery	76—1660	93—7276	1
Decal Battery Charging	Battery	—	93—6668	1
Decal Control	Control Panel	80—3910	93—9893	1
Decal Brake	Control Handle	59—9860	93—9890	1
Decal Interlock	Interlock Handle	59—9870	93—9891	2
Decal Warning	Hood Supports	—	94—2586	2

ENGLISH PARTS DESCRIPTION	LOCATION	ENGLISH PART NO.	EUROPEAN PART NO.	QTY.
Decal Warning	Hood Supports	—	94—2587	2
Decal Warning	Pulley Guard	94—9111	93—6696	1
Decal Danger	Frame Arms	67—5360	93—9883	2
Decal Danger	Coring Head Frame	67—5360	93—9883	1

INSERT DECAL LOCATION SHEETS INTO OPERATOR'S MANUAL FOR OWNER'S REFERENCE.

IMPORTANT

The weighted RMS vibration level which the hands and arms are subject to while the engine is at full throttle and the coring head is engaged is 9.0 m/s^2 .

The sound pressure level at the operator's ear when the engine is at full throttle and the coring head is engaged is 92 dbA.

The sound power level at the operator's ear when the engine is at full throttle and the coring head is engaged is 104 dbA.

MOUNT TRANSPORT SUPPORT LEVERS

With coring head in raised position, lock-up brackets may be raised or lowered by pulling up or pushing down on transport support levers.

1. Insert a transport support lever into top hole of each lock-up bracket, positioning levers as shown in figure 1. Secure each lever to bracket with a flat washer and cotter pin.

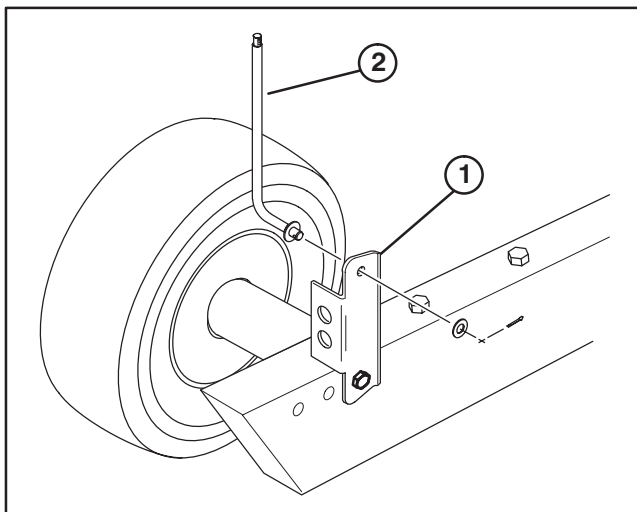


Figure 1

1. Lock-up bracket
2. Transport support lever

MOUNT HOOD SUPPORTS

1. On each side of machine, remove third capscrew from the rear, securing top of chassis guard to side rail (Fig. 2).
2. Mount a side bracket to each side rail with a flange head screw (Fig. 3).

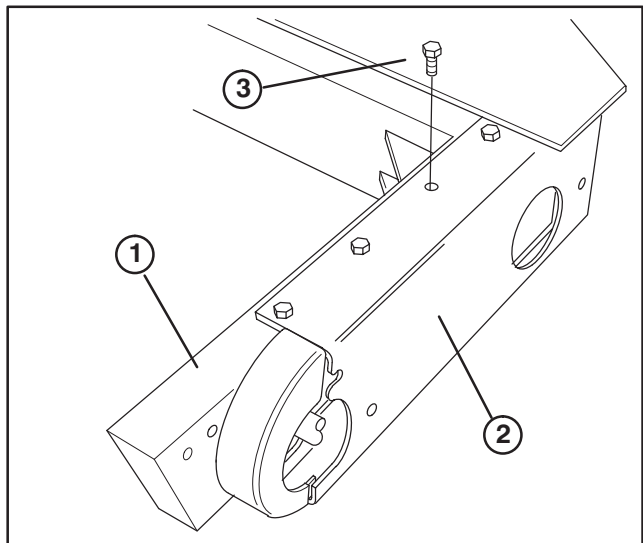


Figure 2

1. Side rail
2. Chassis guard
3. Third capscrew from rear

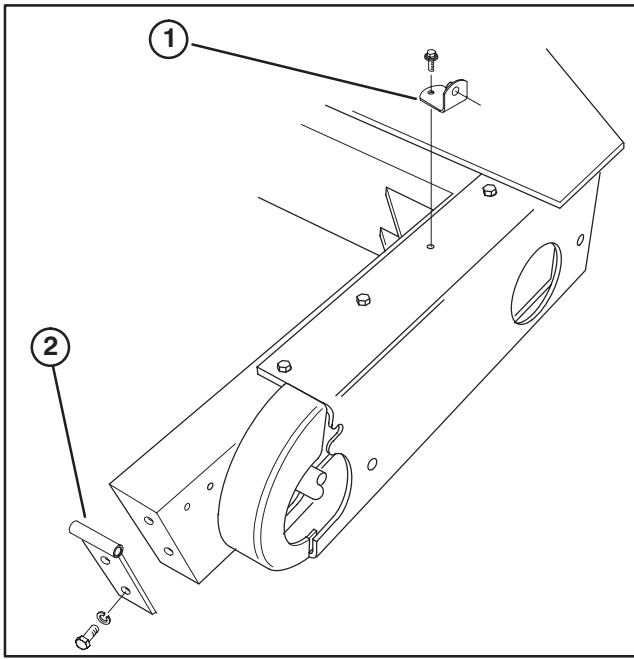


Figure 3

- 1. Side bracket
- 2. Hinge

3. Mount a hinge to each end of side rail with (2) 3/8–16 x 1" lg. capscrews and lockwashers (Fig. 3).

4. Mount the shield to inside front of R.H. hood support with (2) 5/16–18 x 3/4" lg. carriage bolts, flat washers and locknuts, as shown in figure 4.

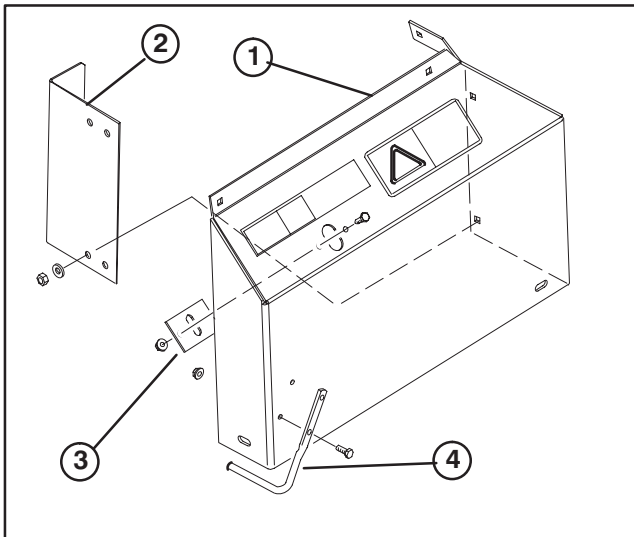


Figure 4

- 1. R.H. hood support
- 2. Shield
- 3. Retainer
- 4. Hinge rod

5. Mount a retainer under slot in top of R.H. and L.H. hood supports with (2) 1/4–20 x 3/4" lg. capscrews and flangehead capscrews (Fig. 4).

6. Position appropriate hood support (R.H. or L.H.) onto side rails, guiding transport support levers thru retainers in top of each support and hinge rods into hinges (Fig. 5). Align each hood support mounting hole with side bracket mounting hole and secure with a 3/8–16 x 3/4" lg. thread forming flange head cap screw.

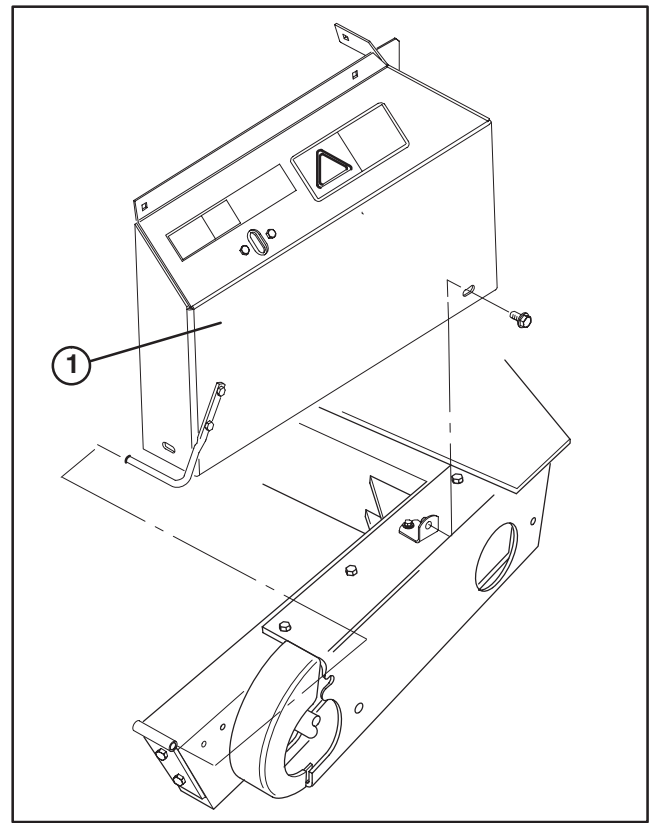


Figure 5

- 1. R.H. hood support

7. Thread a knob onto each transport support lever.

MODIFY CORING HEAD COVER

1. Remove idler pin from idler pin bracket. Remove pop rivets securing idler pin bracket to coring head cover. Retain idler pin and bracket for re-installation.

2. Using dimensions shown in figure 6, locate, mark and drill a 11/32" (8.7 mm) dia. hole in right front of coring head cover. Repeat procedure on left front of cover.

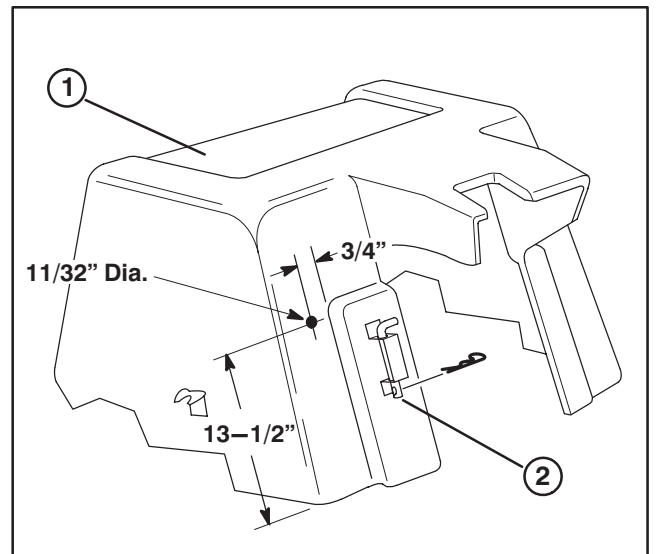


Figure 6

- 1. Coring head cover
- 2. Idler pin & bracket

3. Modify the coring head cover (Fig. 7) using the following procedure:

A. On front of cover, measure up 12" and scribe a line, "A" to "B", parallel to bottom edge. Dark line is scribed line.

B. On side of cover, scribe a line from point "B" to point on top of rear cutout, point "C".

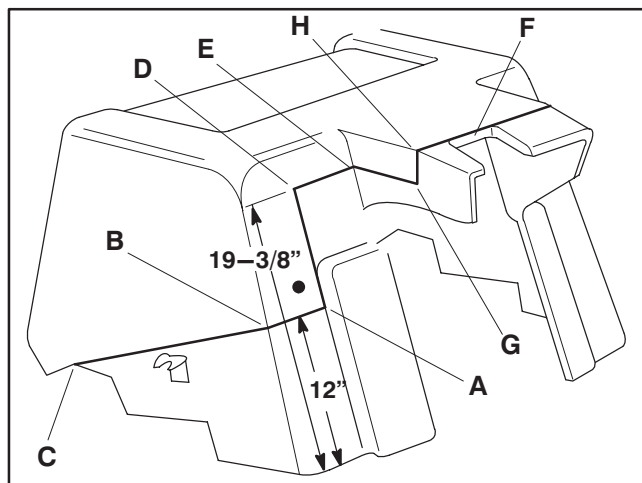


Figure 7

C. Scribe a vertical line from point "A" to point "D", which is 19-3/8" up from bottom edge.

D. At point "D", scribe a line to point "E" which is at side of front cover extension.

E. At back edge of cut-out in front extension, scribe a line parallel to front edge of extension. Line will be the full width of extension.

E. Starting at point "E", scribe a line forward, parallel to top of cover extension.

F. From edge of extension point "H", scribe a vertical line down to parallel line at point "H".

G. Repeat procedure on opposite side of cover, then trim off material at scribed line.

4. On each side of coring head cover only, measure 3-3/4" up from bottom trimmed surface and scribe a parallel line (Fig. 8).

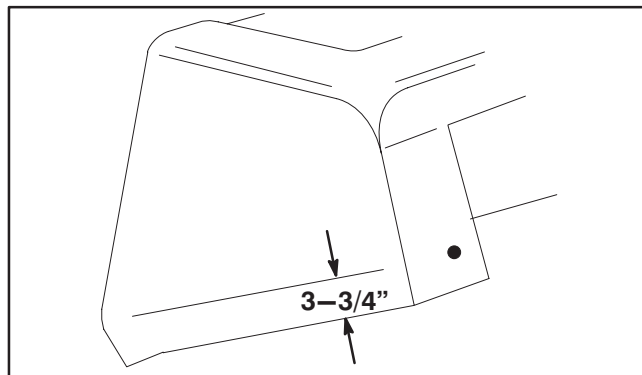


Figure 8

5. Repeat steps 2 thru 4 on left side and front of cover.

6. Place coring head cover onto machine, positioning it inside hood supports and aligning new front mounting holes with holes in hood support tabs.

7. Secure front of coring head cover to hood support tabs with (2) 5/16-18 x 3/4" lg. carriage bolts, flatwashers and locknuts.

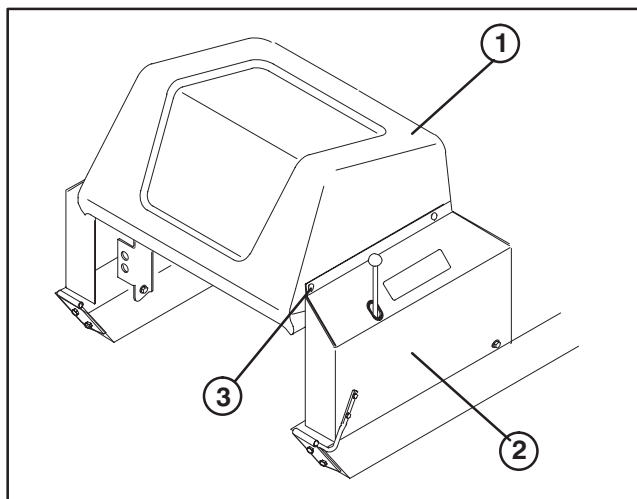


Figure 9

1. Coring head cover
2. Hood support
3. Rear mounting hole

8. Raise or lower rear of coring head cover until rear hole of each hood support is aligned with scribed lines on each side of coring head cover.

9. Using each hood support as a template, mark location of both hood support holes on sides of coring head cover.

10. Drill (2) 11/32" (8.7 mm) dia. holes at locations marked on each side of cover.

11. Secure coring head cover to hood supports with (4) 5/16-18 x 3/4" lg. carriage bolts, flatwashers and locknuts.

MOUNT COVER

1. Mount handle to top of cover with (2) self tapping screws (Fig. 10).

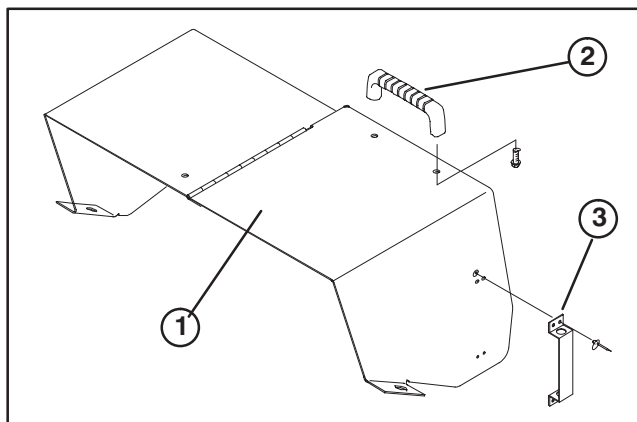


Figure 10

1. Hinged cover
2. Handle
3. Idler pin bracket

2. Mount idler pin bracket to left side of cover with (4) washers and pop rivets (Fig. 10).

3. Position hinged cover onto machine so mounting tab holes align with holes in left and right hood supports and rests on top of coring head cover (Fig. 11).

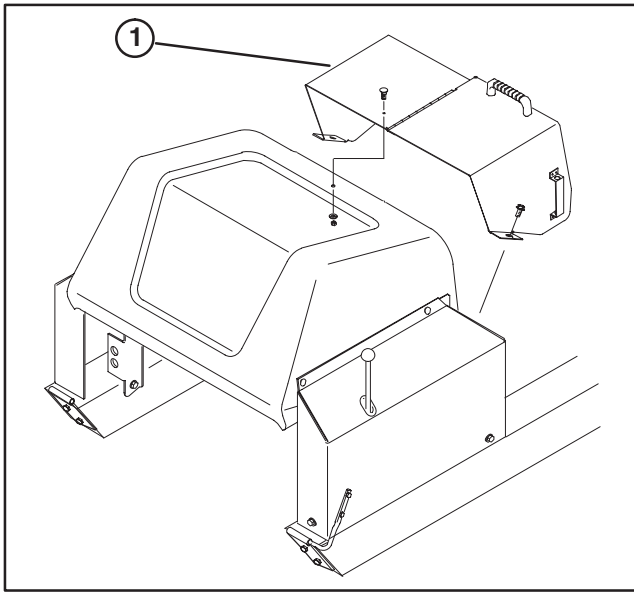


Figure 11
1. Hinged cover

4. Loosely secure hinged cover to left and right hood supports with (2) 3/8–16 x 3/4" lg. thread forming flange head capscrews.

5. Using hinged cover as a template, locate, mark and drill a 11/32" (8.7 mm) dia. hole in coring head cover (Fig. 11).

6. Secure hinged cover to coring head cover with a 5/16–18 x 3/4" carriage bolt, flatwasher and locknut (Fig. 11).

REPLACE CONTROL PANEL COVER FASTENER

1. Remove control panel cover.
2. Remove capscrew, jam nut and acorn nut used to secure front of control panel cover to frame (Fig. 12).

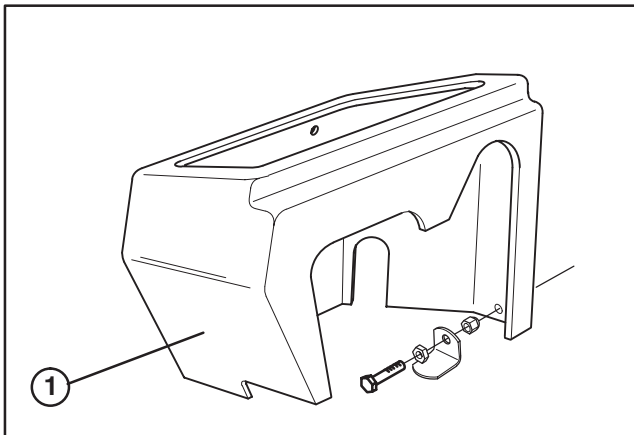


Figure 12
1. Control panel cover

3. Reinstall control panel cover on machine. Secure front of cover to frame with a capscrew, lockwasher and flatwasher (Fig. 13).

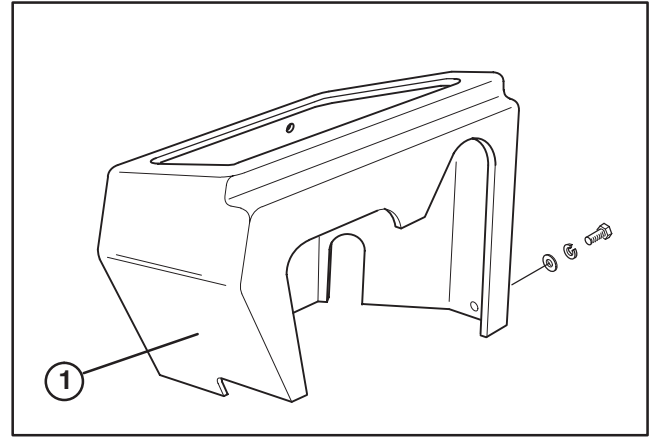


Figure 13
1. Control panel cover

REPLACE GAS CAP

1. Remove gas cap and replace with new cap.

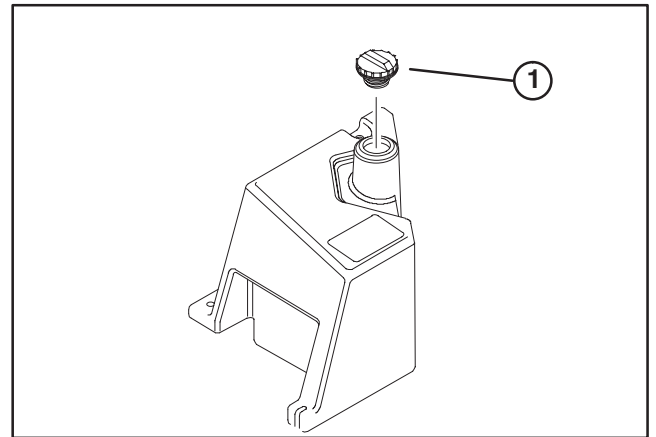


Figure 14
1. Gas cap