



Horn Kit

RT600 or RT1200 Trencher

Model No. 25409
Model No. 25409E

Installation Instructions

Note: Determine the left and right sides of the machine from the normal operating position.

Safety

⚠ WARNING

CALIFORNIA Proposition 65 Warning

This product contains a chemical or chemicals known to the State of California to cause cancer, birth defects, or reproductive harm.

Safety and Instructional Decals



Safety decals and instructions are easily visible to the operator and are located near any area of potential danger. Replace any decal that is damaged or lost.



1. Horn

Installation

Loose Parts

Use the chart below to verify that all parts have been shipped.

| Procedure | Description | Qty. | Use |
|-----------|---|-------------|------------------------------------|
| 1 | No parts required | – | Prepare the machine. |
| 2 | Wiring harness | 1 | Route the wire harness. |
| 3 | Horn Mounting bracket Thread locker | 1 1 1 | Mount the horn (RT600 units only). |



| Procedure | Description | Qty. | Use |
|-----------|-------------------|------|-------------------------------------|
| 4 | Horn | 1 | Mount the horn (RT1200 units only). |
| | Mounting bracket | 1 | |
| | Thread locker | 1 | |
| 5 | Horn switch | 1 | Install the horn switch. |
| | Decal | 1 | |
| | Cable ties | 6 | |
| 6 | No parts required | – | Test the horn function. |

1

Preparing the Machine

No Parts Required

Procedure

1. Move the machine to a level surface.
2. Set the parking brake and lower the attachments to the ground.
3. Shut off the machine and remove the key.

⚠ CAUTION

If you leave the key in the ignition switch, someone could accidentally start the engine and seriously injure you or other bystanders.

Remove the key from the ignition switch before you do any maintenance.

4. Disconnect the battery. Refer to your *Operator's Manual*.
5. Remove the right side panel and the nose panel. Refer to your *Operator's Manual*.

2

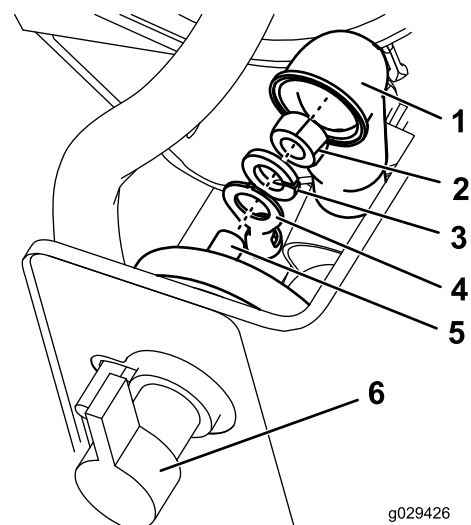
Routing the Wire Harness

Parts needed for this procedure:

| | |
|---|----------------|
| 1 | Wiring harness |
|---|----------------|

Procedure

1. Behind the battery-disconnect switch on the right side of the machine, remove 1 insulator lug, nut, and lockwasher from the positive terminal (Figure 1 or Figure 2).
2. Using the hardware removed, attach 1 ring terminal of the wiring harness to the positive terminal (Figure 1 or Figure 2).



g029426

Figure 1
RT600

- | | |
|------------------|------------------------------|
| 1. Insulator lug | 4. Ring terminal |
| 2. Nut | 5. Positive terminal |
| 3. Lockwasher | 6. Battery-disconnect switch |

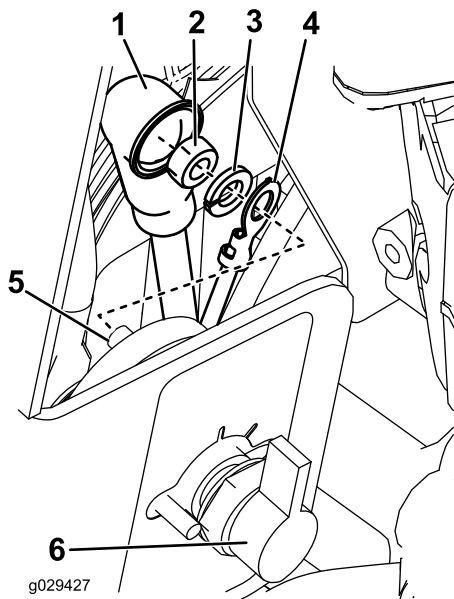


Figure 2
RT1200

- | | |
|------------------|------------------------------|
| 1. Insulator lug | 4. Ring terminal |
| 2. Nut | 5. Positive terminal |
| 3. Lockwasher | 6. Battery-disconnect switch |

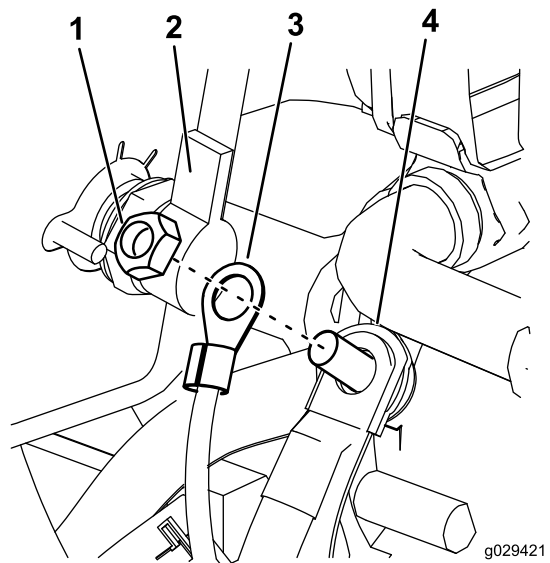


Figure 4
RT1200

- | | |
|------------------------------|------------------|
| 1. Nut | 3. Ring terminal |
| 2. Battery-disconnect switch | 4. Engine ground |

-
5. Route the wiring harness beneath the side ledge toward the nose of the machine.

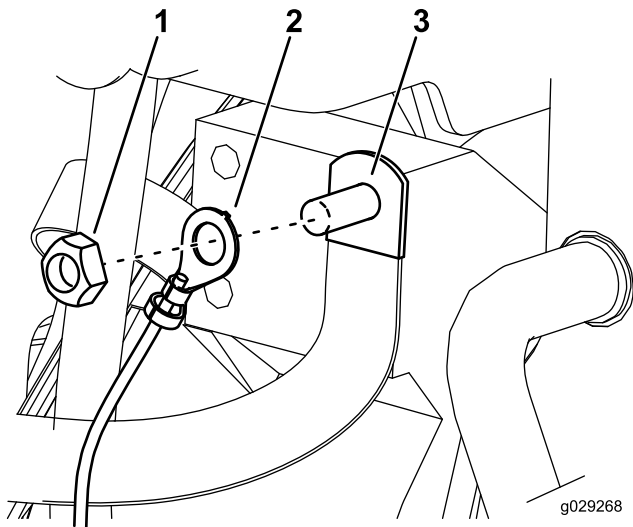


Figure 3
RT600

- | | |
|------------------|------------------|
| 1. Nut | 3. Engine ground |
| 2. Ring terminal | |

3

Mounting the Horn (RT600 Units Only)

Parts needed for this procedure:

| | |
|---|------------------|
| 1 | Horn |
| 1 | Mounting bracket |
| 1 | Thread locker |

Procedure

1. Remove the mounting strap and nut from the horn.
Note: Discard the mounting strap.
2. Apply the thread locker to the horn stud.
3. Install the horn onto the mounting bracket and torque to 7.73 to 12.8 N-m (5.7 to 9.5 ft-lb) (Figure 5).

Note: Orient the horn opening downward.

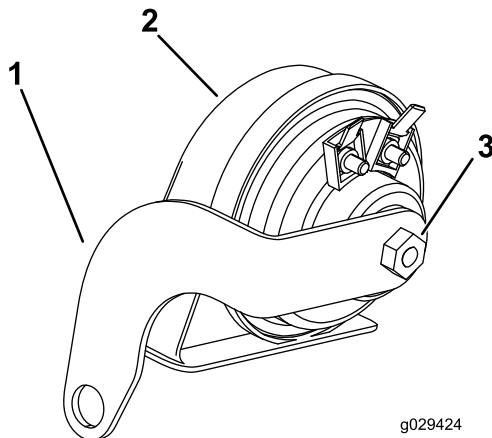


Figure 5

1. Mounting bracket
2. Horn
3. Nut

4. Remove the forward bolt from the existing bracket, and use it to install the mounting bracket (Figure 6).

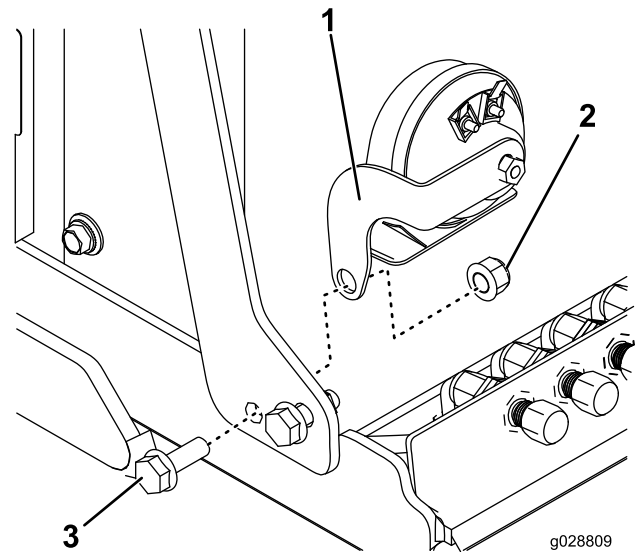


Figure 6

1. Mounting bracket
2. Bolt
3. Nut

5. Connect the wire harness to the horn posts (Figure 7).

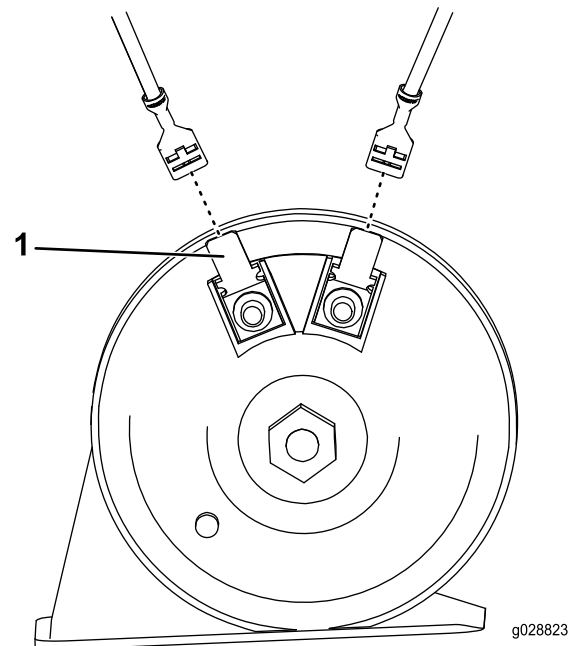


Figure 7

Mounting bracket not shown

1. Horn post

4

Mounting the Horn (RT1200 Units Only)

Parts needed for this procedure:

| | |
|---|------------------|
| 1 | Horn |
| 1 | Mounting bracket |
| 1 | Thread locker |

Procedure

1. Remove the mounting strap and nut from the horn. Discard the mounting strap.
2. Apply the thread locker to the horn stud.
3. Install the horn onto the mounting bracket and torque to 7.73 to 12.8 N-m (5.7 to 9.5 ft-lb) (Figure 8).

Note: Orient the horn opening downward.

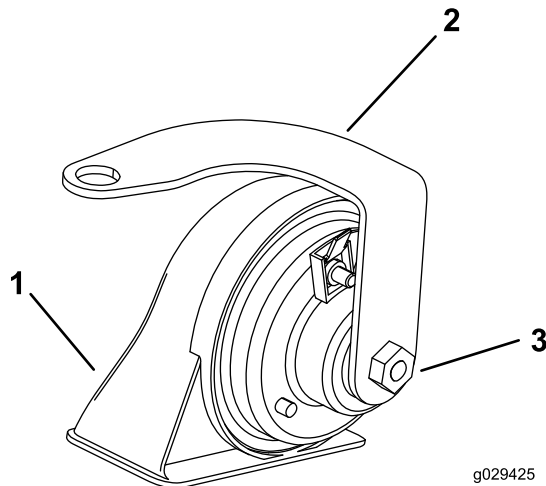


Figure 8

1. Horn
2. Mounting bracket
3. Nut

4. Remove the forward bolt from the existing bracket, and use it to install the mounting bracket (Figure 9).

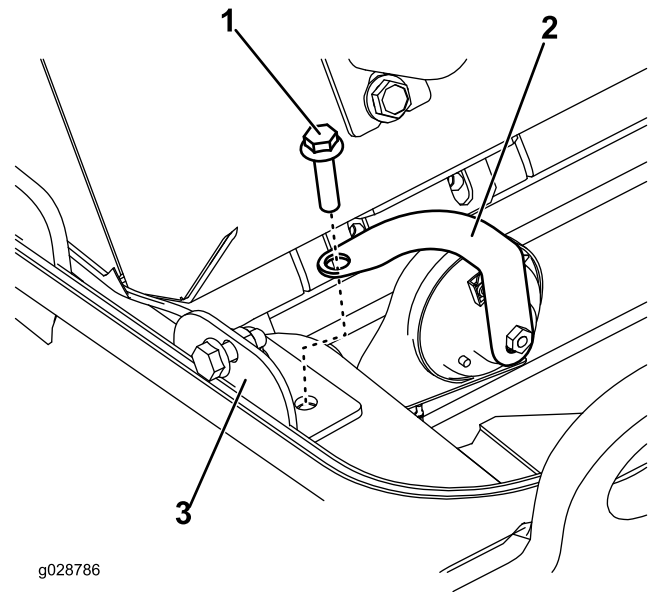


Figure 9

1. Bolt
2. Mounting bracket
3. Existing bracket

5. Connect the wiring harness to the horn posts (Figure 10).

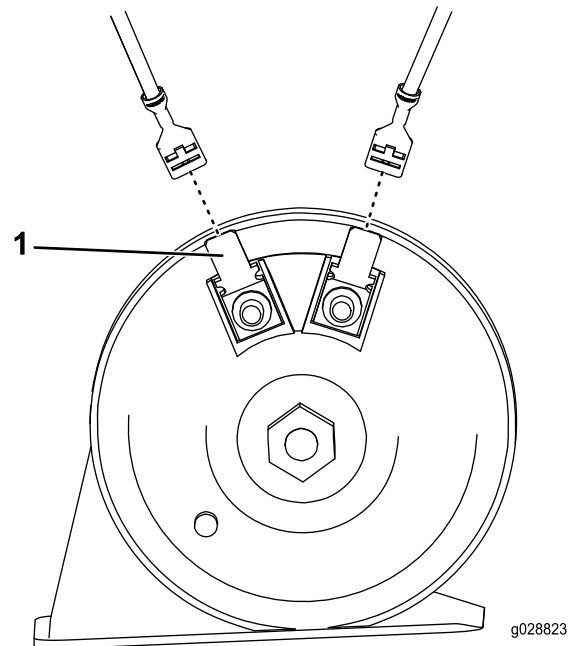


Figure 10

Mounting bracket not shown

1. Horn post

5

Installing the Horn Switch

Parts needed for this procedure:

| | |
|---|-------------|
| 1 | Horn switch |
| 1 | Decal |
| 6 | Cable ties |

Procedure

1. On the left side of the steering column, remove the plug shown in [Figure 11](#).

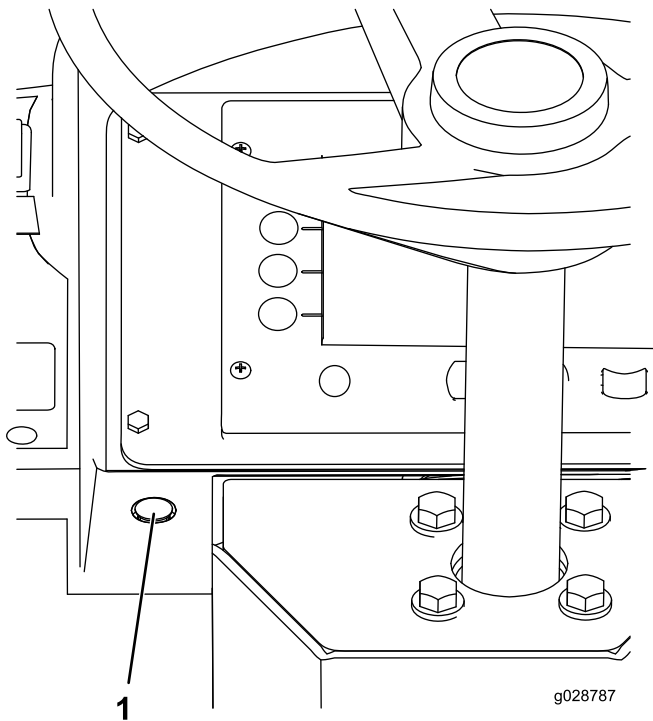


Figure 11

1. Plug

2. Remove the kick panel beneath the dashboard ([Figure 12](#)).

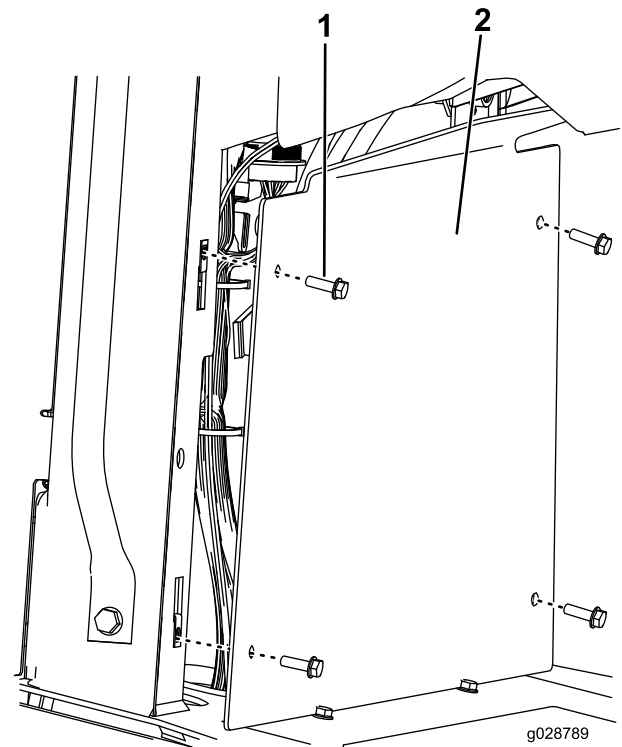


Figure 12

1. Bolt
2. Kick panel

3. Connect the wiring harness to the horn switch ([Figure 13](#)).

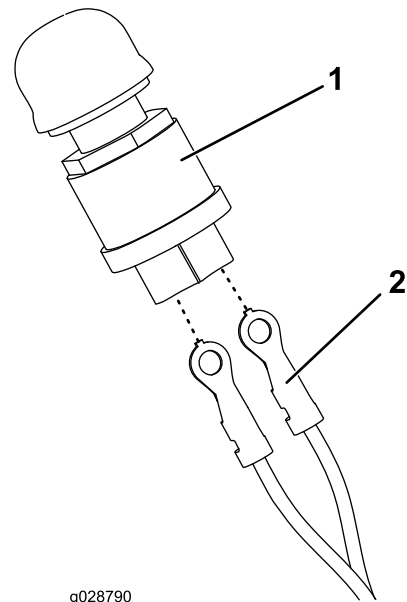


Figure 13

1. Horn switch
2. Wire harness

4. Unscrew the rubber button from the horn switch.
5. Route horn switch and wiring harness up through the dashboard to the hole in the dashboard and screw the button back onto the switch ([Figure 14](#)).

6

Testing the Horn Function

No Parts Required

Procedure

Confirm that the horn sounds when you press the horn button and stops when you release it.

Note: If the horn does not sound, ensure that the wiring harness connectors are secure.

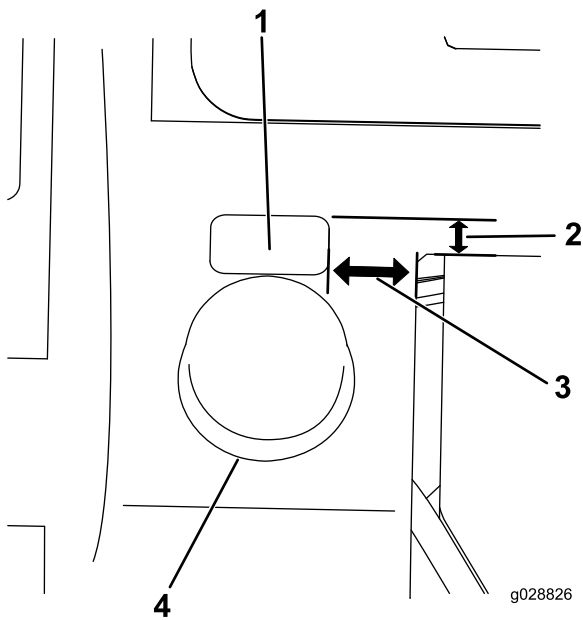


Figure 14

- | | |
|------------------------|------------------------|
| 1. Decal | 3. 1.37 cm (0.54 inch) |
| 2. 0.25 cm (0.10 inch) | 4. Rubber button |

-
6. Install the decal in the location shown in [Figure 14](#).
 7. Connect the battery. Refer to your *Operator's Manual*.
 8. Turn the main power disconnect switch and the ignition key to the On position.
 9. Secure the wiring harness to the traction unit with the cable ties. Ensure the wiring harness will not interfere with any moving parts and will not contact parts of the machine that will get hot.
 10. Install the kick panel ([Figure 12](#)).
 11. Install the right side and nose panels. Refer to your *Operator's Manual*.



Count on it.