

## Brake Linkage Kit

**PART NUMBERS: 94-9712**

**INSTALLATION  
INSTRUCTIONS**

**Note:** Keep these Instructions with your tractor Operator's Manual for future reference.

### Loose Parts

**Note:** Use the chart below to identify parts used for assembly.

DESCRIPTION	QTY.	USE
Brake pad	2	Replace transaxle brake parts.
Brake disc	1	
Brake rod	1	Assemble brake linkage.
Spring rod	1	
Brake spring	1	
Washer – 11/32" (9 mm)	3	
Cotter pin	1	
Trunnion	1	
Jam Nut – 5/16"-18 (8 mm)	2	
Brake linkage (pre-assembled see above)	–	Install brake linkage.
Washer 3/8" (9.5 mm)	1	
Cotter pin	2	
Return spring	1	
Washer 13/32" (10.5 mm)	1	
Brake stop	1	Attach brake stop to transaxle.
Bolt – 5/16"-18 x 2-1/4" (57 mm)	2	
Locknut – 5/16"-18 (8 mm)	2	

### Replace Brake Parts

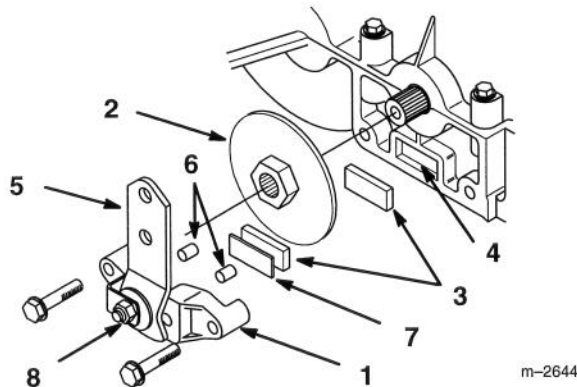
- Jack up rear of tractor and support with jack stands.
- Remove right rear wheel and clean area of transaxle around brake.
- Unhook existing brake return spring and brake spring from brake arm. Discard brake return spring.

4. Remove brake support bracket from transaxle and slide existing brake disc off shaft (Fig. 1).
5. Clean cavity for brake pad and install new brake pad in transaxle case (Fig. 1).
6. Slide new brake disc onto shaft (Fig. 1).
7. Remove brake pad from brake support bracket (Fig. 1).

**IMPORTANT: Look for metal plate behind brake pad in brake support bracket and save for re-use.**

**IMPORTANT: Check that pins in brake support bracket move freely when brake lever is moved.**

8. Place metal plate and new brake pad in brake support bracket (Fig. 1).
9. Install brake support bracket onto transaxle case.
10. Torque bracket mounting screws to 100 in.-lb. (11 N·m)

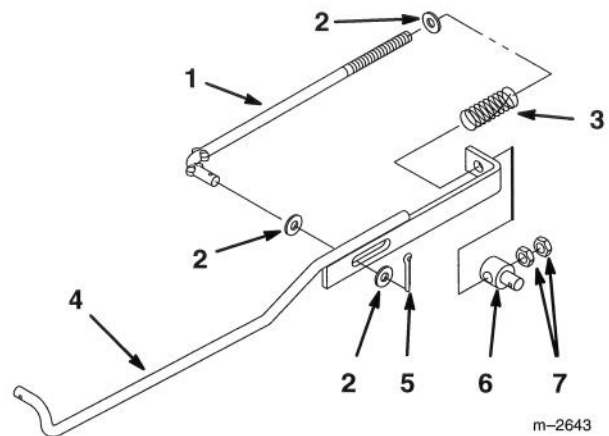


**Figure 1**

- |                          |                  |
|--------------------------|------------------|
| 1. Brake support bracket | 5. Brake arm     |
| 2. Brake disc            | 6. Pin           |
| 3. Brake pad             | 7. Metal plate   |
| 4. Cavity                | 8. Adjusting nut |

## Pre-assembly Brake Linkage

1. Slide a 11/32" (9 mm) washer and brake spring onto threaded end of spring rod (Fig. 2). Place threaded end of spring rod into hole in brake rod capturing brake spring (Fig. 2).
2. Slide a 11/32" (9 mm) washer onto formed end of spring rod, then place formed end into slot in brake rod (Fig. 2). Place second washer on formed end and secure with cotter pin (Fig. 2).
3. Slide trunnion onto threaded end of spring rod and loosely retain with (2) 5/16"-18 (8 mm) jam nuts (Fig. 2).



**Figure 2**

- |                         |                            |
|-------------------------|----------------------------|
| 1. Spring rod           | 5. Cotter pin              |
| 2. Washer 11/32" (9 mm) | 6. Trunnion                |
| 3. Brake spring         | 7. Jam nut 5/16"-18 (8 mm) |
| 4. Brake rod            |                            |

## Replace Brake Linkage

1. Remove the brake micro switch and mounting plate, next to pedal, and move to the side, out of the way (Fig. 3). Save mounting hardware.
2. Remove the right side cross shaft bracket and loosen the left side bracket so brake pedal drops down (Fig. 3). Save all mounting hardware.
3. Remove cotter pin, clevis pin and unhook existing brake spring from lower pedal hole. Discard spring and parts.
4. Remove cotter pin, clevis pin, washer and spacer from upper pedal hole. Discard parts.

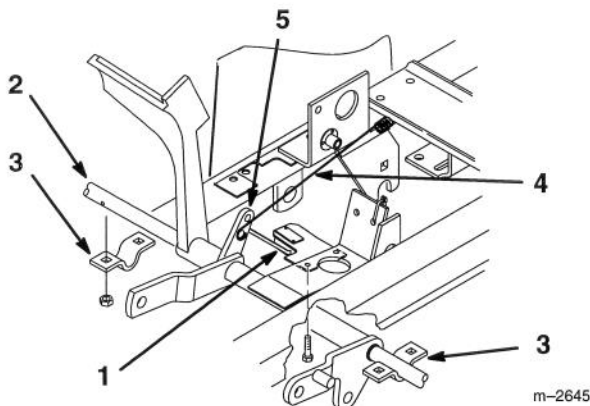


Figure 3

- |                        |  |
|------------------------|--|
| 1. Brake switch plate  | 4. Brake spring                              |
| 2. Cross shaft         | 5. Clevis pin, spacer, washer and cotter pin |
| 3. Cross shaft bracket |  |

5. Place new brake rod assembly above the lift shaft and slide formed end into brake pedal upper hole (Fig. 4). Secure with 3/8" (9.5 mm) washer and cotter pin. Put cotter pin through from front and wrap ends fully around rod (Fig. 4).

**IMPORTANT: Place cotter pin through hole from the front and wrap ends fully around rod.**

6. Check that clutch and brake pedals are located in front of pedal stops. Install right side cross shaft bracket with previously removed hardware, and tighten left side bracket (Fig. 3).

**IMPORTANT: Test clutch and brake pedals to confirm they are in front of pedal stops.**

7. Install mounting plate and micro switch, with previously removed hardware.

**IMPORTANT: Make sure arm of switch is behind pedal arm, moves freely and wires are attached.**

8. Hook open end of brake return spring around back right side of rear frame opening (Fig. 4).
9. Place trunnion through closed loop of the brake return spring (Fig. 4 & 6).
10. Stretch return spring and place trunnion into hole in brake lever (Fig. 4). Secure in place with 13/32" (10.5 mm) washer and cotter pin (Fig. 4).

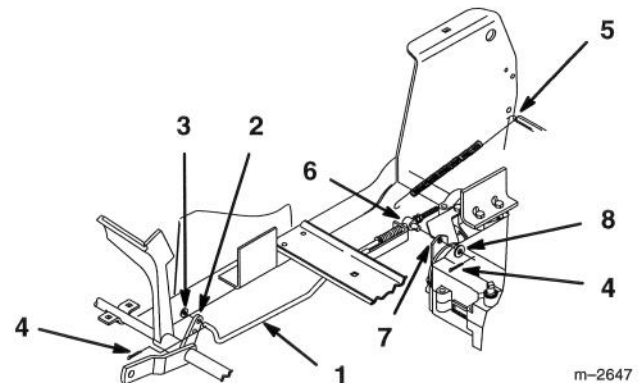


Figure 4

- |                         |                            |
|-------------------------|----------------------------|
| 1. Brake rod assembly   | 5. Return spring           |
| 2. Upper hole           | 6. Trunnion                |
| 3. Washer 3/8" (9.5 mm) | 7. Brake lever             |
| 4. Cotter pin           | 8. Washer 13/32" (10.5 mm) |

## Install Brake Stop Plate

1. Clean right side of transaxle case above axle. Align stop plate on transaxle housing and secure with (2) 5/16-18 x 2-1/4" (57 mm) bolts and 5/16" (8 mm) lock nuts (Fig. 5).

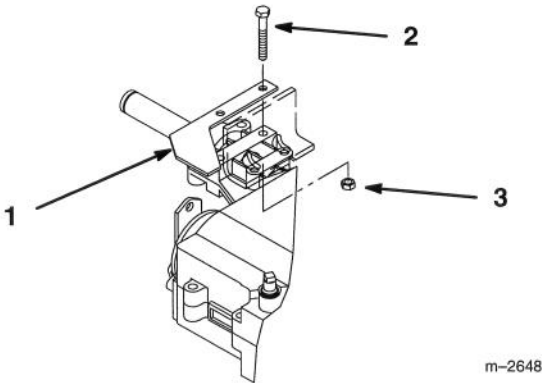


Figure 5

1. Stop plate
2. Bolt 5/16-18 x 2-1/4" (57 mm)
3. Lock nut 5/16" (8mm)

## Adjust Brake

1. With brake lever against stop plate adjust brake adjusting nut so brake disc just rotates when wheel hub is turned by hand (Fig. 6).
2. With brake pedal back against pedal stop, turn adjusting nut against trunnion until brake lever just touches stop plate. Brake pedal should begin to move brake lever before the brake spring starts to compress (Fig. 6). Tighten second jam nut to hold adjustment.

**Note:** When brake pedal is fully depressed, brake rod must not contact end of slot (Fig. 6).

3. Install rear wheel.
4. Operate tractor and test brake, parking brake and safety interlock system.

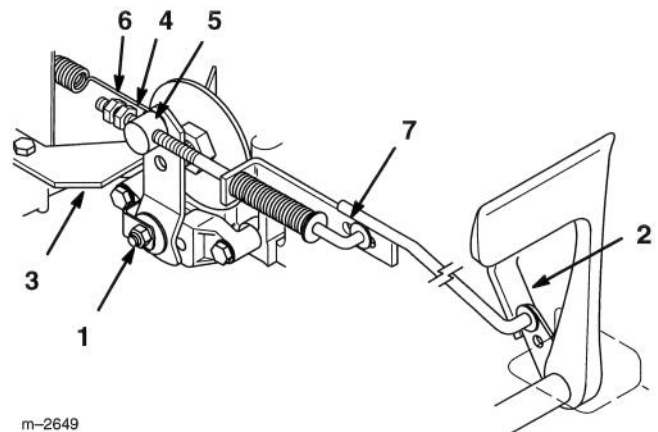


Figure 6

1. Brake adjusting nut
2. Pedal stop
3. Stop plate
4. Adjusting nut
5. Trunnion
6. Jam nut
7. End of slot