



# Manual Spray Kit

## 2015 and After Multi-Pro 5800 Turf Sprayer

Model No. 132-5570

### Installation Instructions

## Loose Parts

Use the chart below to verify that all parts have been shipped.

Description	Qty.	Use
Valve module	1	Install the valve module.
Bolt (1/4 x 5/8 inch)	2	
Washer (1/4 inch)	2	
Nut (1/4 inch)	2	
Speedometer	1	Install the speedometer.
Wiring harness	1	
Fuse (10 amp)	1	

## ⚠ WARNING

### CALIFORNIA Proposition 65 Warning

This product contains a chemical or chemicals known to the State of California to cause cancer, birth defects, or reproductive harm.

**Note:** You may need a Fuse Block Kit (Toro part number 92-2641) to provide power to the speedometer if there are no open fuse ports. Contact your Toro Distributor to purchase this kit.

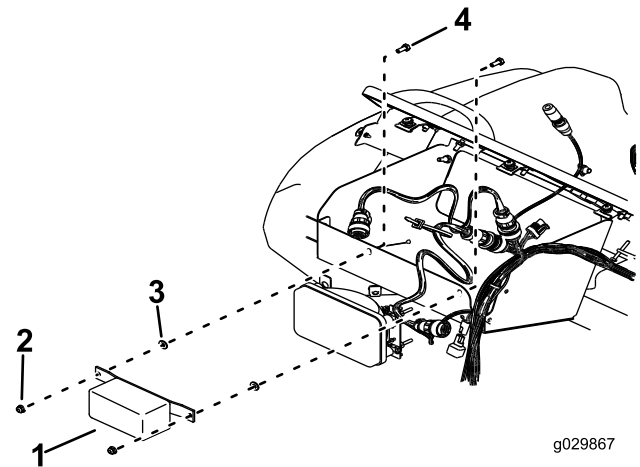
## Installing the Valve Module

1. Position the machine on a level surface, set the parking brake, turn the ignition off, and remove the key.

### ⚠ CAUTION

If you leave the key in the ignition switch, someone could accidentally start the engine and seriously injure you or other bystanders.

**Remove the key from the ignition switch before you do any maintenance.**



g029867

Figure 1

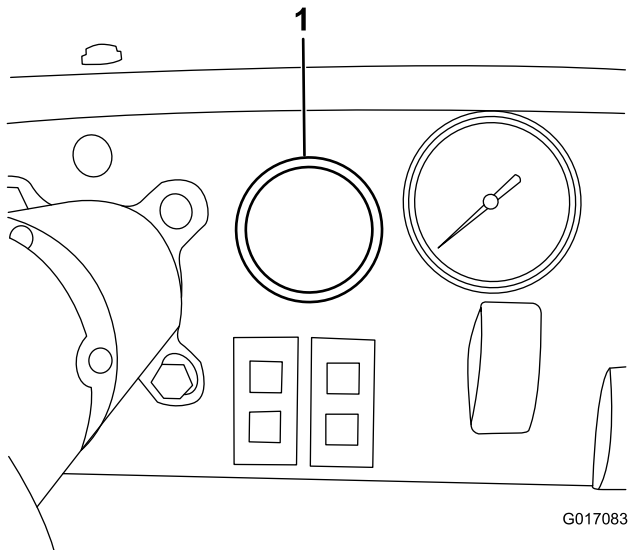
- |                 |           |
|-----------------|-----------|
| 1. Valve module | 3. Washer |
| 2. Nut          | 4. Bolt   |

2. Disconnect the negative battery terminal from the battery; refer to your *Operator's Manual*.
3. Open the hood.
4. Install the valve module to the front of the storage compartment using 2 bolts, 2 washers, and 2 nuts (Figure 1).



# Installing the Speedometer

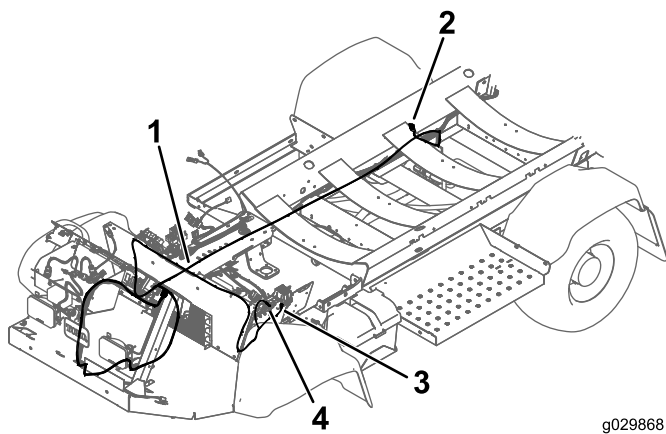
1. Remove the knock out in the dash of the machine and install the speedometer in its place [Figure 2](#).



**Figure 2**

1. Knock out

2. Connect the speedometer plug into the speedometer-wiring-harness connector.
3. Route the longer end of the speedometer wiring harness on the right side of the machine, following the main wiring harness of the machine to the right, rear tire ([Figure 3](#)).



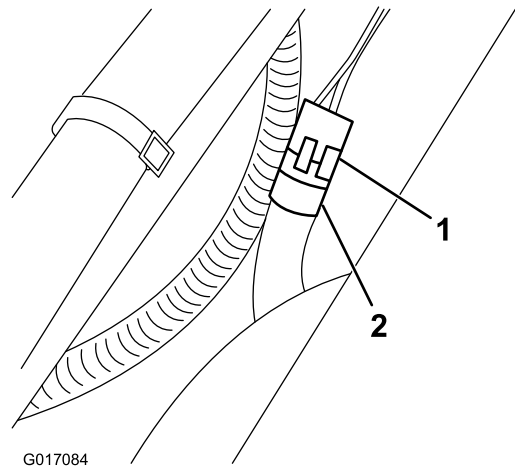
**Figure 3**

1. Speedometer wiring harness
2. Connect to the wheel-motor connector.
3. Connect to the fuse block.
4. Connect to the ground-terminal block.

4. Unplug the main wire harness from the wheel-motor connector.

5. Connect the speedometer wire harness to the wheel-motor connector using the 3-pin weather-pack connector end ([Figure 4](#)).

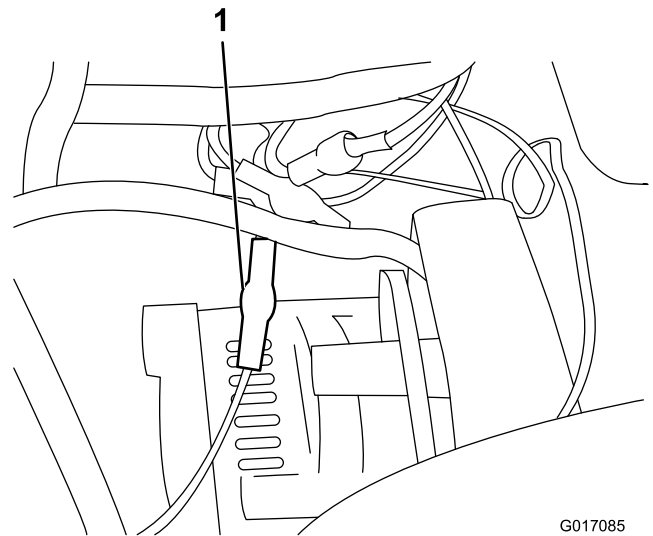
**Note:** This connection is near the rear, right fender of the vehicle.



**Figure 4**

1. Weather-pack connector
2. Wheel-motor connector

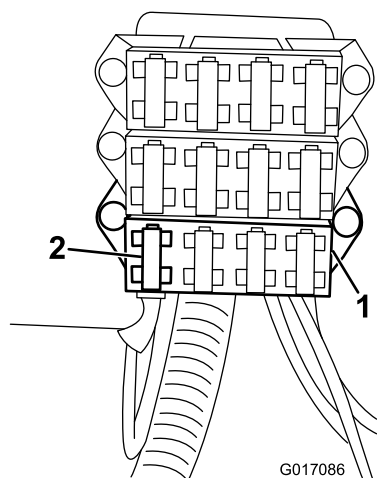
6. Secure the wiring harness to the frame.
7. Route the other end of the wire to the fuse block under the left seat ([Figure 3](#)).
8. Connect the wire to one of the available terminals from the fuse block ([Figure 5](#)).



**Figure 5**

1. Wire connected to a terminal

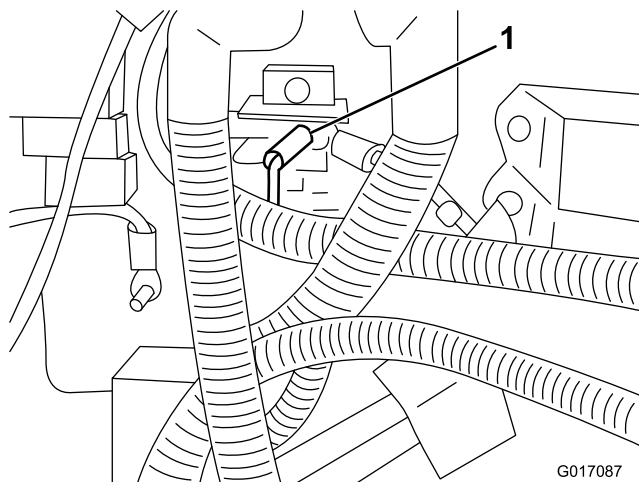
9. If no power terminals on the existing fuse block are available, install an additional fuse block (Toro part number 92-2641) and the 10-amp fuse ([Figure 6](#)).



**Figure 6**

1. Fuse block                      2. Fuse (10 amp)
- 

10. Plug in an available power terminal from the fuse block.
11. Connect the black wire with a ring terminal to the ground-terminal block ([Figure 7](#)).



**Figure 7**

1. Ring terminal on the terminal block
- 

12. If not done already, install the 10-amp fuse to the fuse block.
13. Close the hood.
14. Install the negative battery terminal to the battery.



**Count on it.**