



Count on it.

Parts Catalog

18in Straight-Shaft Gas Trimmer

Model No. 51998—Serial No. 315000001 and Up



Ordering Replacement Parts

To order replacement parts, please supply the part number, the quantity, and the description of each part desired.

Understanding Reference Numbers

Each identified part in an illustration has a reference number. The reference number for a part also appears in the parts list, along with other information about the part.

This catalog uses two special reference number formats, one to indicate parts in a service assembly and another to indicate the quantity of a given part in an illustration.

Service Assembly Reference Numbers

Parts in service assemblies have reference numbers in the form a:b. The a represents the reference number of the entire service assembly and the b represents a sequential number unique to each part within the service assembly.

For example, a wheel assembly might be identified by reference number 6, the tire by 6:1, the valve by 6:2, and the wheel by 6:3. When you order the assembly identified by reference number 6, you receive all parts identified by reference numbers 6:1, 6:2, and 6:3. However, you may also order any part individually. Reference numbers of this type appear in illustration and in parts lists.

Reference Numbers Indicating Quantity

In an illustration, if a reference number indicates more than one part, the reference number has the form nX y. The n represents the quantity of the part, the X is the multiplication symbol, and the y represents the reference number.

For example, in an illustration, the reference number 2X 37 means that two of the parts identified by reference number 37 are indicated.

List of Abbreviations

AR: as required

ASM: assembly

BBC: blade brake control

BHTF: button head thread forming

CARR: carriage

CCW: counter clockwise

CW: clockwise

DEG: degrees

DPA: Dual Point Adjustment

ECM: electronic control module

EXT: external

FH: flat head

GA: gauge

HD: heavy-duty

HF: hex flange

HH: hex head

HHF: hex head flange

HHFTF: hex head flange thread forming

HJ: hex jam

HLH: hex lag head

HOC: height-of-cut

HP: high pressure

HSBH: hex socket button head

HSFH: hex socket flat head

HSH: hex socket head

HWH: hex washer head

HWHTF: hex washer head thread forming

HYD: hydraulic

LH: left hand

LP: low pressure

LPG: Liquefied Petroleum Gas

NI: nylon insert

NPTF: national pipe thread fine

PFH: phillips flat head

PPH: phillips pan head

PPHTF: phillips pan head thread forming

PRH: phillips round head

PTH: phillips truss head

PTO: power-take-off

RH: right hand

ROPS: roll-over protection system

RRB: rear roller brush

SFH: slotted fillister head

SHH: slotted hex head

SHWH: slotted hex washer head

SPH: slotted pan head

SQH: square head

SRH: slotted round head

STD: standard

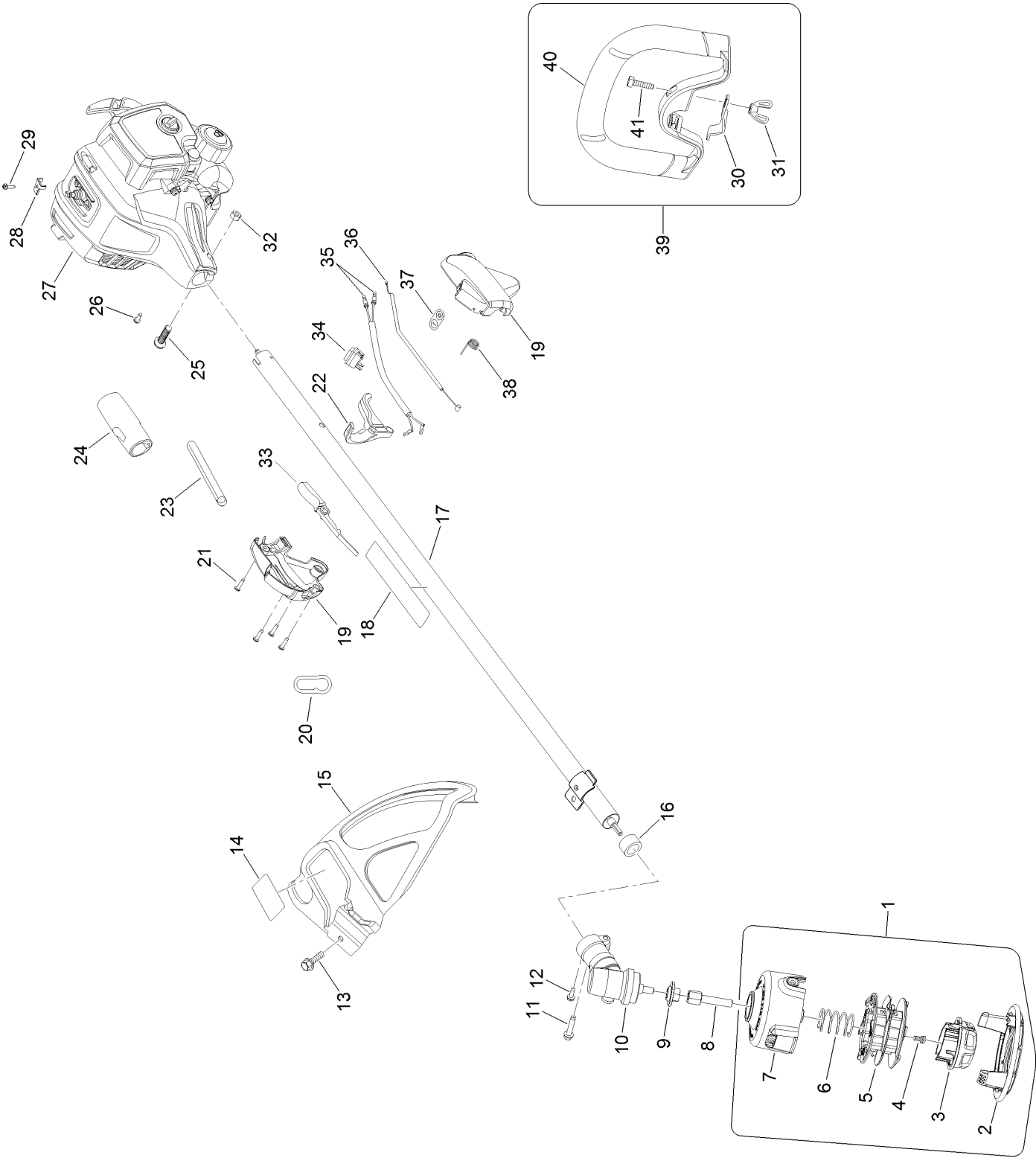
TAP: self tapping

TTH: torx truss head

Contents

Upper Shaft, Handle and Powerhead Assembly 4
Powerhead Assembly No. 308466018 6
Attachments and Accessories 8

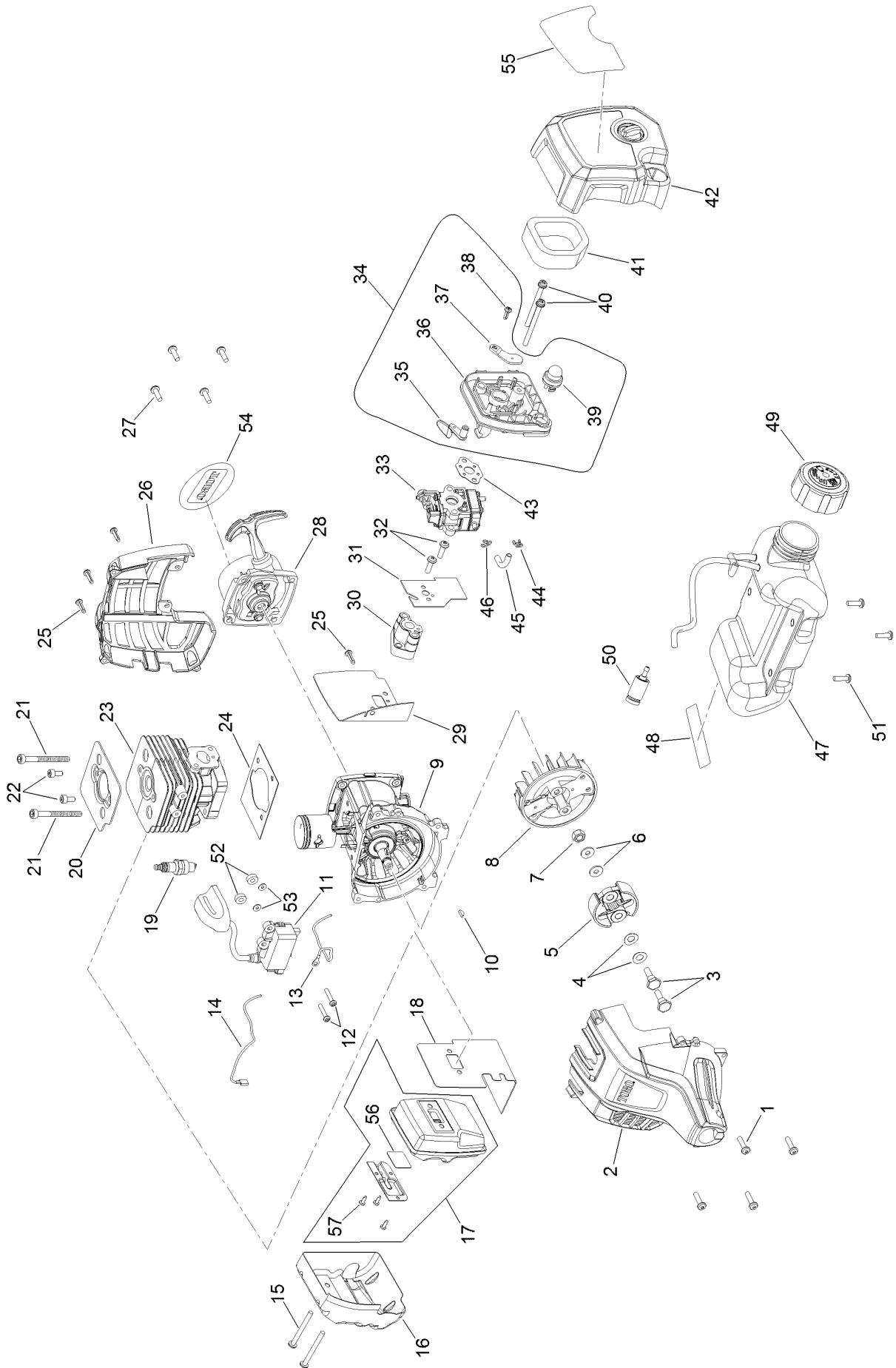
Upper Shaft, Handle and Powerhead Assembly



Upper Shaft, Handle and Powerhead Assembly (continued)

<i>Ref.</i>	<i>Part Number</i>	<i>Qty.</i>	<i>Description</i>	<i>Ref.</i>	<i>Part Number</i>	<i>Qty.</i>	<i>Description</i>
1	308923015	1	Trimmer Head ASM	20	638431001	1	Clip-Strap, Shoulder
2	518804003	1	Housing-Stringhead, Lower	21	660563002	4	Screw
3	518803003	1	Knob-Bump	22	518696017	1	Trigger
4	660649001	1	Bolt	23	518210004	1	Tube-Corrugated
5	308924001	1	Spool ASM	24	570234009	1	Grip-Shaft, Upper
6	678749001	1	Spring-Compression	25	T660697001	1	Screw
7	518800005	1	Housing-Spool, Straight Shaft	26	660925011	1	Screw
8	678019004	1	Adaptor-Head Shaft, Trimmer	27	308466018	1	Powerhead ASM
9	678011001	1	Washer-Flange	28	638133001	1	Clamp-Cable, Throttle
10	308210001	1	Gear Case ASM	29	660734001	1	Screw
11	660642001	1	Screw	30	639167001	1	Clamp-Handle, Upper Shaft
12	660641001	1	Screw	31	518949001	1	Nut-Wing
13	660738002	1	Screw-HWH	32	678029002	1	Nut-Hex
14	940627020	1	Label-Deflector, Grass	33	518695017	1	Trigger Lock
15	308473004	1	Grass Deflector ASM	34	760961005	1	Switch-On/Off
16	518367001	1	Spacer	35	308863029	1	Lead
17	308470070	1	Upper Boom ASM (Includes Item 18)	36	308225011	1	Cable-Throttle
18	940657168	1	Decal-Warning	37	940864003	1	Label-On/Stop
19	308869003	1	Control Handle ASM	38	690694002	1	Spring-Trigger
				39	308056009	1	Handle ASM
				40	526760001	1	Handle-Shaft, Upper
				41	660857001	1	Screw

Powerhead Assembly No. 308466018



Powerhead Assembly No. 308466018 (continued)

<i>Ref.</i>	<i>Part Number</i>	<i>Qty.</i>	<i>Description</i>	<i>Ref.</i>	<i>Part Number</i>	<i>Qty.</i>	<i>Description</i>
1	660344001	4	Screw-Pan HD	30	518329001	1	Insulator-Dam, Heat
2	300754031	1	Housing-Engine, Front	31	901697001	1	Gasket
3	660353001	2	Screw-Clutch	32	660344003	2	Screw-Pan HD
4	690696001	2	Washer-Curved	33	308480001	1	Carburetor ASM
5	300756007	1	Clutch ASM	34	308478004	1	Filter Housing ASM
6	690695001	2	Washer	35	590458001	1	Lever-Choke
7	690689001	1	Nut-Rotor	36	518130001	1	Plate-Carburetor
8	640574002	1	Rotor	37	590946001	1	Plate-Choke
9	300749010	1	Crankcase ASM	38	660345001	1	Screw-Pan HD
10	690688001	1	Key-Woodruff	39	300780002	1	Primer ASM
11	290178024	1	Coil Boot ASM	40	660346001	2	Screw-Pan HD
12	660349001	2	Screw-Pan HD	41	560873001	1	Element
13	290143002	1	Wire-Lead, Red	42	308890002	1	Cover ASM (Includes Item 55)
14	290143001	1	Wire-Lead, Black	43	900711003	1	Gasket-Carburetor
15	660347001	2	Screw-Pan HD	44	690699001	2	Clip-Hose
16	638027002	1	Shield-Heat	45	570373002	1	Line-Fuel, 45Mm
17	300748021	1	Muffler ASM	46	690700001	1	Clip-Hose
18	630002032	1	Gasket-Muffler	47	308675063	1	Fuel tank And Cap ASM
19	870170001	1	Spark Plug	48	940654088	1	Label-Combustion
20	630002021	1	Plate-Cylinder	49	310816005	1	Cap-Fuel
21	660342001	2	Screw-Socket Head	50	310976001	1	Filter-Fuel
22	660351002	2	Screw-Pan Head, Torx	51	660354001	3	Screw
23	640570023	1	Cylinder	52	590462001	2	Spacer
24	900709005	1	Gasket	53	690969001	2	Washer
25	660563001	4	Screw	54	940865001	1	Plate-Logo
26	591644001	1	Housing-Engine, Rear	55	940686148	1	Decal-Start
27	660351001	4	Screw-Pan HD	56	638268001	1	Screen
28	308430016	1	Recoil Starter And Starter Cup ASM	57	660870001	3	Screw-Pan HD
29	900711008	1	Gasket-Insulator				

Attachments and Accessories

For 51998 18in Straight-Shaft Gas Trimmer

Product Name

Model/Part

Spark Arrestor Kit	000998216
High Altitude Kit	120900107

Notes:

Notes:

Notes:



Count on it.