



Covered Boom Kit

Multi Pro® Turf Sprayer with Truss-Style Boom

Model No. 41602—Serial No. 315000001 and Up

Operator's Manual

Loose Parts

Use the chart below to verify that all parts have been shipped.

Procedure	Description	Qty.	Use
1	Center boom bracket (models 2014 and older)	2	Install the center boom brackets and cover.
	Boom mount plate	2	
	U-nut	4	
	Hex head screw, 3/8 x 1-1/4 inch	4	
	Model/serial number decal	1	
	Regulatory decal (119-4986)	1	
	Flange nut (3/8 inch)	4	
	Washer plate	2	
	Hex head screw, 5/16 x 1-1/4 inch	4	
	Center-boom bracket (models 2015 and newer)	2	
2	Wing-boom cover	2	Install the wing boom covers.
	Washer plate	16	
	U-nut	12	
	Hex-head bolts, 5/16 x 1-1/4 inch	12	
3	Drain-valve-mount bracket	1	Install the drain valve mount bracket.
	Carriage screw (3/8 x 1-1/4 inch)	2	
	Flange nut (5/16 inch)	2	
4	No parts required	—	Check that the boom covers have proper clearance.

Important: Air induction Flat Fan nozzles (AIC TeeJet) are recommended for use with the covered boom kit to avoid chemical buildup on the covers during application. Refer to Toro's nozzle chart for details.

Note: The Spring Upgrade Kit, Part No. 120-8508 should be installed with the Covered Boom.



1

Install the Center Boom Brackets and Cover

Parts needed for this procedure:

2	Center boom bracket (models 2014 and older)
2	Boom mount plate
4	U-nut
4	Hex head screw, 3/8 x 1-1/4 inch
1	Model/serial number decal
1	Regulatory decal (119-4986)
4	Flange nut (3/8 inch)
2	Washer plate
4	Hex head screw, 5/16 x 1-1/4 inch
2	Center-boom bracket (models 2015 and newer)

Procedure

Attach the model/serial number decal and the regulatory decal to 1 of the center boom brackets as shown in [Figure 2](#).

Note: Before applying the decals, clean the decal area and ensure that it is free of dirt, grease, or other foreign material.

For models 2014 and older:

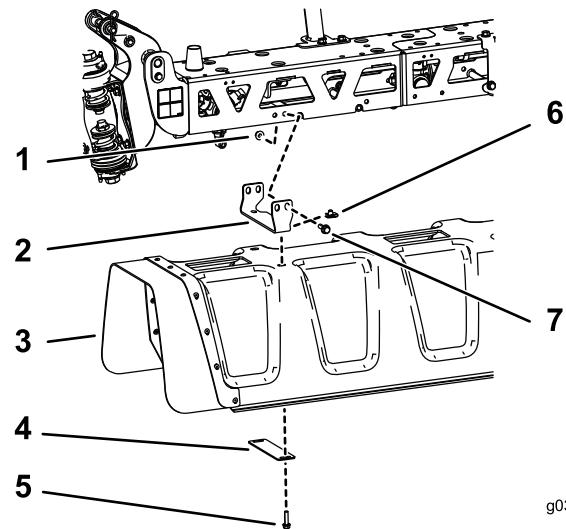
1. Install each of the 2 center brackets and boom mount plates to the center boom using 2 hex-head bolts (3/8 x 1-1/4 inch) and 2 flange nuts (3/8 inch) as shown in [Figure 2](#).

Note: When mounting the kit to a sprayer, use the holes in the center bracket to attach the kit to the unit. When mounting the kit to a Workman, use the holes in the boom mount plate to attach the kit to the unit.

2. Install the center cover assembly to the center boom brackets using 4 U-nuts 2 washer plates, and 4 hex-head bolts (5/16 x 1-1/4 inch) as shown in [Figure 2](#).

For models 2015 and newer:

1. Install the center-cover assembly to the bracket using 4 U-nuts, 2 washer plates, and 4 hex-head bolts (5/16 x 1-1/4 inch) as shown in [Figure 1](#).



g030299

Figure 1

2015 models and newer

- | | |
|--------------------------|---------------------------------------|
| 1. Flange nut (3/8 inch) | 5. Hex head screw (5/16 x 1-1/4 inch) |
| 2. Bracket | 6. U-nut |
| 3. Center-boom cover | 7. Flange nut (3/8 inch) |
| 4. Washer plate | |

2. Install each of the 2 center brackets and boom mount plates to the center boom using 2 hex-head bolts (3/8 x 1-1/4 inch) and 2 flange nuts (3/8 inch) as shown in [Figure 1](#).

2

Install the Wing Boom Covers

Parts needed for this procedure:

2	Wing-boom cover
16	Washer plate
12	U-nut
12	Hex-head bolts, 5/16 x 1-1/4 inch

Procedure

1. Orient the spray nozzles on both wing booms straight downward so that it can fit in the holes of the wing boom covers.
2. Install 1 of the wing boom covers ([Figure 2](#)) using 8 washer plates, 6 hex-head bolts (5/16 x 1-1/4 inch), and 6 U-nuts.
3. Repeat step 2 to install the other wing-boom cover.

3

Installing the Drain Valve Mount Bracket

Parts needed for this procedure:

1	Drain-valve-mount bracket
2	Carriage screw (3/8 x 1-1/4 inch)
2	Flange nut (5/16 inch)

Procedure

1. Install the drain-valve-mount bracket onto the machine with 2 carriage screws and 2 flange nuts (5/16 inch) as shown in [Figure 2](#).
2. Move the drain valve from its existing position and install it onto the mounting bracket ([Figure 2](#)) using the existing lynch pin and lanyard.

4

Checking the Clearance of the Boom Covers

No Parts Required

Procedure

Verify that the center boom cover and the wing boom covers do not bind when the booms are lowered, and adjust the covers as needed.

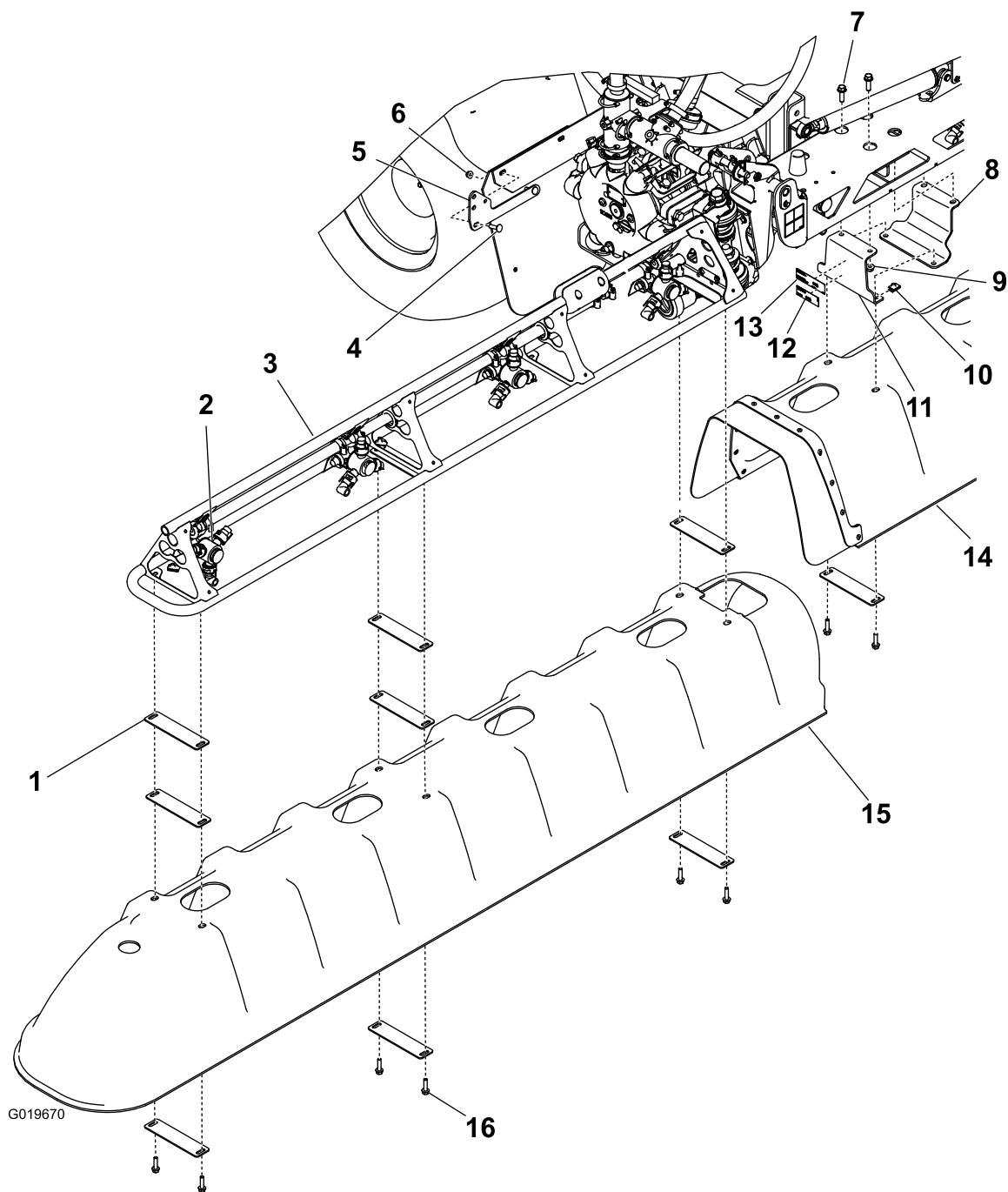


Figure 2
2014 models and older

- | | | |
|-------------------------------------|--|---|
| 1. Washer plate (18) | 7. Hex head bolt, 3/8 x 1-1/4 inch (4) | 13. Model/serial number decal |
| 2. Spray nozzle (properly oriented) | 8. Boom-mount plate (2) | 14. Center-boom cover |
| 3. Wing boom (2) | 9. Flange nut, 3/8 inch (4) | 15. Wing-boom cover (2) |
| 4. Carriage bolt (2) | 10. U-nut (16) | 16. Hex-head bolt, 5/16 x 1-1/4 inch (16) |
| 5. Drain valve mount bracket | 11. Center-boom bracket (2) | |
| 6. Flange nut, 5/16 inch (2) | 12. Regulatory decal | |