



# Rear Quick-Attach System

## 2013 and After Groundsmaster® 7200 Series Mower

Model No. 30810—Serial No. 315000001 and Up

Model No. 30812—Serial No. 315000001 and Up

### Installation Instructions

**Note:** The machine must be equipped with the Auxiliary Power Unit Kit, Toro part no. 30382.

#### ⚠ WARNING

##### CALIFORNIA Proposition 65 Warning

This product contains a chemical or chemicals known to the State of California to cause cancer, birth defects, or reproductive harm.

## Installation

### Loose Parts

Use the chart below to verify that all parts have been shipped.

Procedure	Description	Qty.	Use
<b>1</b>	No parts required	–	Prepare the machine.
<b>2</b>	Cylinder-support assembly Bolt (3/8 x 2-3/4 inches) Bolt (3/8 x 1-1/4 inches) Bolt (3/8 x 1 inch) Nut (3/8 inch) Lift-arm assembly Bolt (7/8 x 4-1/2 inches) Jam nut (7/8 inch) Spindle washer Bolt (1/2 x 1-1/2 inches) Locknut (1/2 inch) Cylinder-mount pivot pin Grease fitting	1 2 3 1 3 1 2 2 8 1 1 1 1	Install the lift-arm assembly (for Model 30810 only).
<b>3</b>	Link mount Bolt (3/8 x 1 inch) Nut (3/8 inch) Lift-arm assembly Bolt (7/8 x 4-1/2 inches) Jam nut (7/8 inch) Spindle washer Bolt (1/2 x 1-1/2 inches) Locknut (1/2 inch) Pivot pin Grease fitting	1 3 3 1 2 2 8 1 1 1 1 1	Install the lift-arm assembly (for Model 30812 only).



Procedure	Description	Qty.	Use
<b>4</b>	Tee fitting (Model 30812 only)	1	Install the hydraulic hoses.
	Hose clamp (3/8 inch)	3	
	Cable tie	4	
<b>5</b>	Relay bracket	1	Install the relays and switches (for Model 30810 only).
	Relay	6	
	Bolt (1/4 x 1/2 inch)	6	
	Nut (1/4 inch)	7	
	Bolt (1/4 x 3/4 inch)	1	
	Decal (from Auxiliary Power Unit Kit)	1	
<b>6</b>	Switch	2	Install the relays and switches (for Model 30812 only).
	Relay bracket	1	
	Relay	6	
	Bolt (1/4 x 1/2 inch)	6	
	Nut (1/4 inch)	7	
	Bolt (3/8 x 2 inches)	1	
	Washer (0.406 inch)	1	
	Nut (3/8 inch)	1	
	Bolt (1/4 x 1/2 inch)	6	
	Locknut (1/4 inch)	6	
	Decal (from Auxiliary Power Unit Kit)	1	
	Switch	2	
<b>7</b>	Wiring harness	1	Install the wiring harness.
<b>8</b>	No parts required	—	Complete installation.

# 1

## Preparing the Machine

### No Parts Required

### Procedure

1. Park the machine on a level surface, lower the cutting unit, stop the machine, engage the parking brake, and remove the key from the ignition switch.

### ⚠ CAUTION

If you leave the key in the ignition switch, someone could accidentally start the engine and seriously injure you or bystanders.

Remove the key from the ignition switch before you do any maintenance.

2. Disconnect the negative (–) battery cable from the battery.

# 2

## Installing the Lift-Arm Assembly

### Model 30810

#### Parts needed for this procedure:

1	Cylinder-support assembly
2	Bolt (3/8 x 2-3/4 inches)
3	Bolt (3/8 x 1-1/4 inches)
1	Bolt (3/8 x 1 inch)
3	Nut (3/8 inch)
1	Lift-arm assembly
2	Bolt (7/8 x 4-1/2 inches)
2	Jam nut (7/8 inch)
8	Spindle washer
1	Bolt (1/2 x 1-1/2 inches)
1	Locknut (1/2 inch)
1	Cylinder-mount pivot pin
1	Grease fitting

### Procedure

**Note:** To gain additional access during the assembly of the kit, raise the rear of the traction unit, support it with jack stands, and remove the right, rear tire.

1. Remove the existing 3 bolts and 3 nuts from the skid assembly (Figure 1).

**Note:** Retain the nuts.

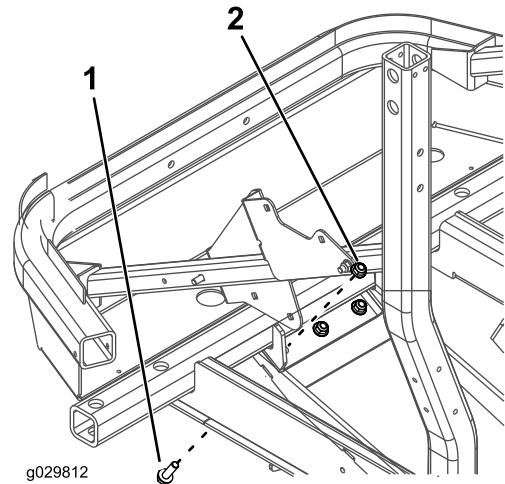


Figure 1

1. Bolt
2. Nut

2. Secure the cylinder-support assembly to the rear-bumper bracket and skid assembly with 2 bolts (3/8 x 2-3/4 inch), 3 bolts (3/8 x 1-1/4 inch), 2 nuts (3/8 inch), and the 3 existing nuts that you just removed.

**Note:** Position the cylinder-support assembly as shown in Figure 2.

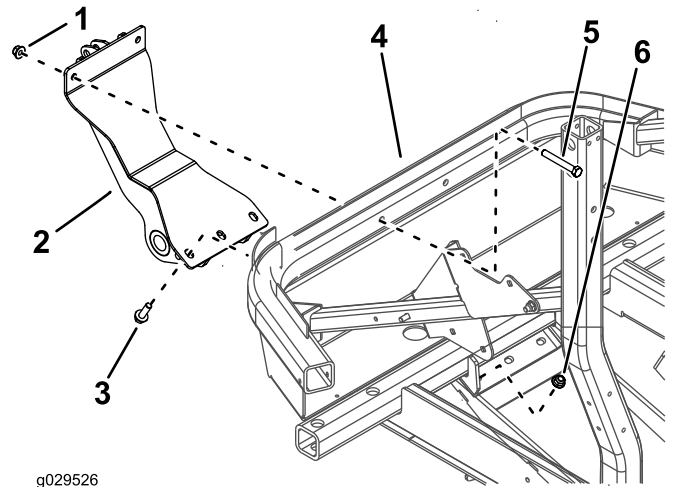
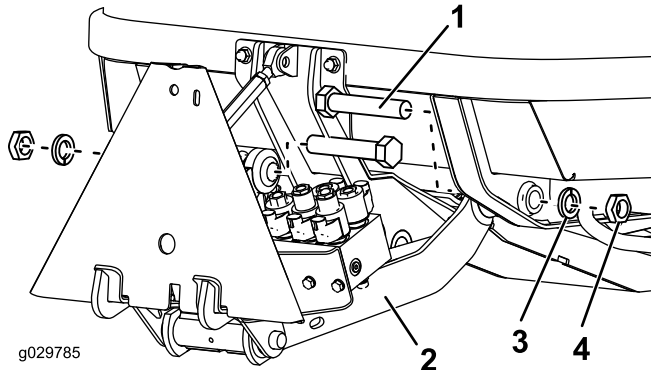


Figure 2

1. Nut (3/8 inch)
2. Cylinder-support assembly
3. Bolt (3/8 x 1-1/4 inch)
4. Rear-bumper bracket
5. Bolt (3/8 x 2-3/4 inch)
6. Existing nut

3. Mount the lift-arm assembly to the rear frame members, with 2 bolts (7/8 x 4-1/2 inch), 2 jam nuts (7/8 inch), and as many spindle washers as necessary to evenly shim between the right and left sides of the lift arm and rear frame members.

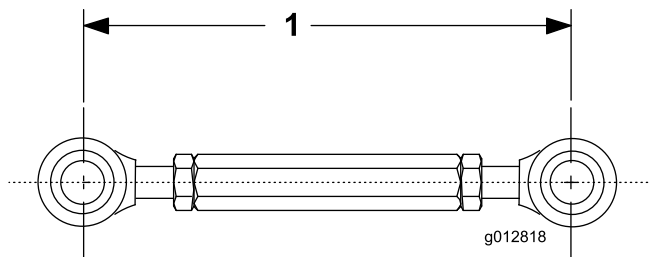
**Note:** Position the components as shown in [Figure 3](#).



**Figure 3**

- |                            |                   |
|----------------------------|-------------------|
| 1. Bolt (7/8 x 4-1/2 inch) | 3. Spindle washer |
| 2. Lift-arm assembly       | 4. Jam nut        |

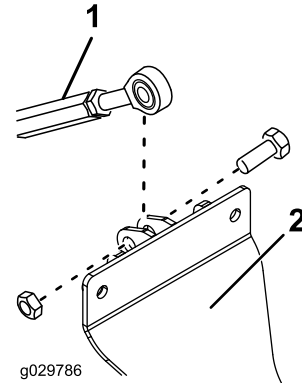
4. Torque the bolts and locknuts 518 to 648 N-m (382 to 478 ft-lb).
5. Adjust the length of the threaded link to 19 cm (7-1/2 inches) and tighten the jam nuts ([Figure 4](#)).



**Figure 4**

1. Length of threaded link—19 cm (7-1/2 inches)

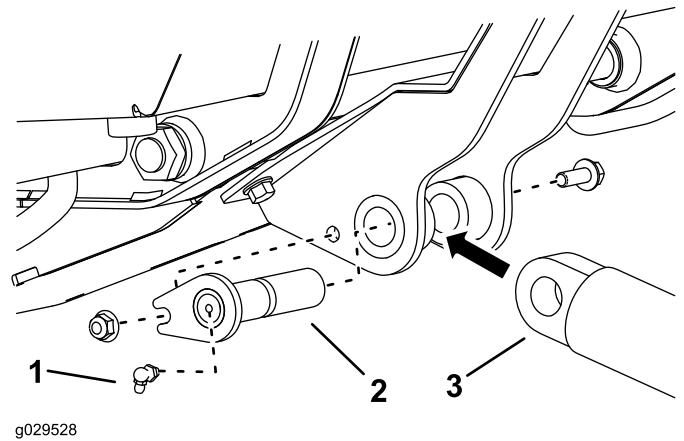
6. Secure the threaded link rod end to the cylinder-support assembly with a bolt (1/2 x 1-1/2 inch) and locknut (1/2 inch) as shown in [Figure 5](#).



**Figure 5**

- |                 |                              |
|-----------------|------------------------------|
| 1. Lift adapter | 2. Cylinder-support assembly |
|-----------------|------------------------------|

7. Mount the loose end of the hydraulic cylinder to the cylinder-support assembly with the cylinder-mount pivot pin, bolt (3/8 x 1 inch), and nut (3/8 inch) as shown in [Figure 6](#).



**Figure 6**

- |                   |  |
|-------------------|--|
| 1. Grease fitting | 3. Hydraulic cylinder (stationery end) |
| 2. Pivot pin      |  |

8. Thread a grease fitting into the end of the pivot pin as shown in [Figure 6](#).

# 3

## Installing the Lift-Arm Assembly

### Model 30812

#### Parts needed for this procedure:

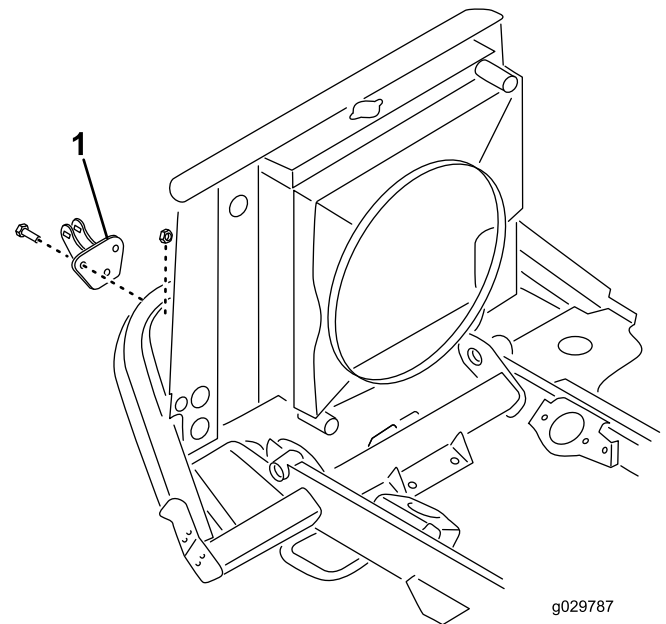
1	Link mount
3	Bolt (3/8 x 1 inch)
3	Nut (3/8 inch)
1	Lift-arm assembly
2	Bolt (7/8 x 4-1/2 inches)
2	Jam nut (7/8 inch)
8	Spindle washer
1	Bolt (1/2 x 1-1/2 inches)
1	Locknut (1/2 inch)
1	Pivot pin
1	Grease fitting

## Procedure

**Note:** To gain additional access during the assembly of the kit, raise the rear of the traction unit, support it with jack stands, and remove the right, rear tire.

1. Secure the link mount to the rear-bumper bracket with 3 bolts (3/8 x 1 inch) and 3 nuts (3/8 inch).

**Note:** Position the link mount as shown in [Figure 7](#).

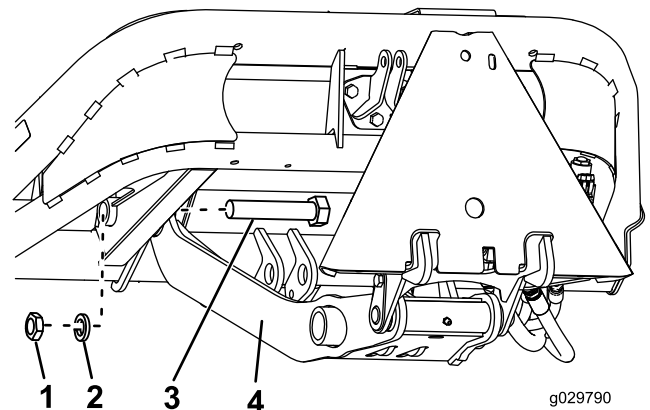


**Figure 7**

1. Link mount

2. Mount the lift-arm assembly to the rear frame members, with 2 bolts (7/8 x 4-1/2 inch), 2 jam nuts (7/8 inch), and as many spindle washers as necessary to evenly shim between the right and left sides of the lift arm and rear frame members.

**Note:** Position the components as shown in [Figure 8](#)

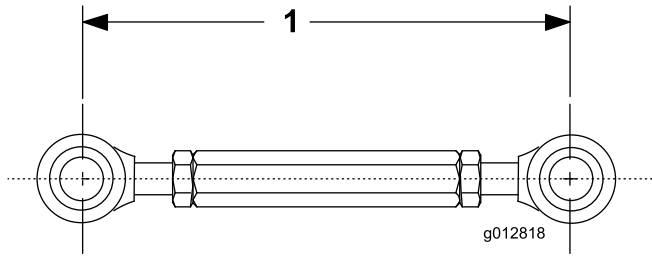


**Figure 8**

1. Jam nut (7/8 inch)
2. Spindle washer
3. Bolt (7/8 x 4-1/2 inch)
4. Lift-arm assembly

3. Torque the bolts and locknuts 518 to 648 N-m (382 to 478 ft-lb).

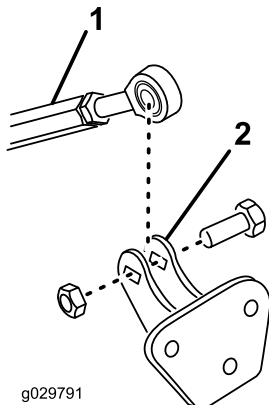
4. Adjust the length of the threaded link to 19 cm (7-1/2 inches) and tighten the jam nuts ([Figure 9](#)).



**Figure 9**

1. Length of threaded link—19 cm (7-1/2 inch)

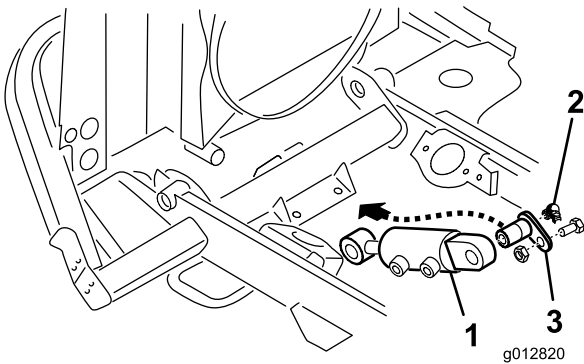
5. Secure the rod end of the threaded link to the link-support assembly with a bolt (1/2 x 1-1/2 inch) and locknut (1/2 inch) as shown in [Figure 10](#).



**Figure 10**

1. Threaded link                      2. Link-support assembly

6. Mount the stationary end of the hydraulic cylinder to the underside of the frame cross-member bracket with a pivot pin ([Figure 11](#)).

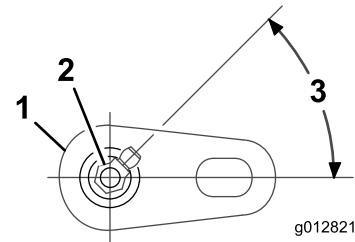


**Figure 11**

1. Hydraulic cylinder (stationary end)                      3. Pivot pin  
2. Grease fitting

7. Thread a grease fitting into the end of the pivot pin ([Figure 11](#)).

**Note:** Position the grease fitting as shown in [Figure 12](#).



**Figure 12**

1. Pivot pin                                      3. Angle of grease fitting—45 degrees  
2. Grease fitting

# 4

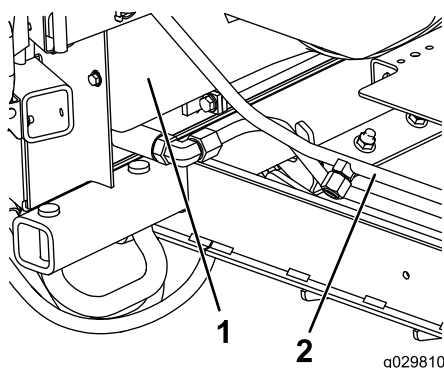
## Installing the Hydraulic Hoses

### Parts needed for this procedure:

1	Tee fitting (Model 30812 only)
3	Hose clamp (3/8 inch)
4	Cable tie

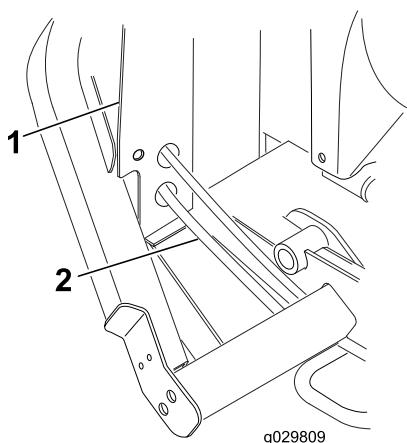
### Procedure

1. On the right side of the machine, just ahead of the radiator frame, place a drain pan under the oil-cooler-return hose (Figure 13 or Figure 14).



**Figure 13**  
Model 30810

1. Radiator frame
2. Oil-cooler-return hose

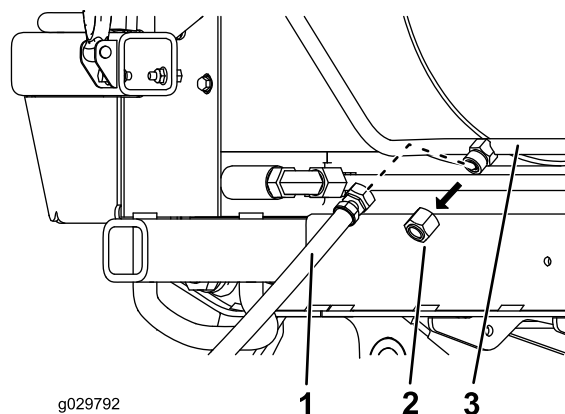


**Figure 14**  
Model 30812

1. Radiator frame
2. Oil-cooler-return hose

2. Route the short hose from the manifold to the oil-cooler-return hose location.
3. **For model 30810 only:** install the short hose to the oil-cooler hose as follows:

- A. Remove the cap from the hardline of the oil-cooler return hose (Figure 15).

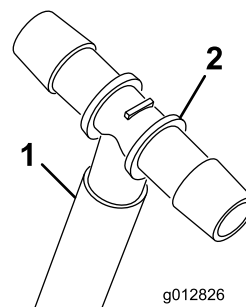


**Figure 15**

1. Short hose
2. Hardline cap
3. Oil-cooler-return hose

- B. Thread the short hose to the hardline (Figure 15).
- C. Continue to step 5.

4. **For model 30812 only:** install the short hose to the oil-cooler hose as follows:
  - A. Insert a clamp onto the short hose and then insert the tee fitting into the end of the short hose (Figure 16).

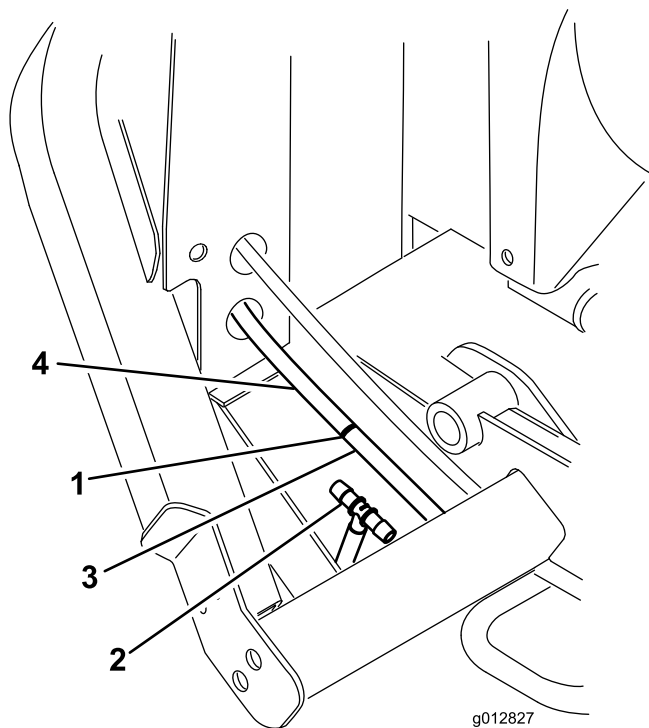


**Figure 16**

1. Short hose
2. Tee fitting

- B. Measure approximately 12.7 cm (5 inches) from the radiator frame and cut the oil-cooler-return hose (Figure 17).

**Note:** This is the hose between the deck-lift valve and the oil cooler. Hold the hose ends upward to decrease the amount of hydraulic fluid lost.

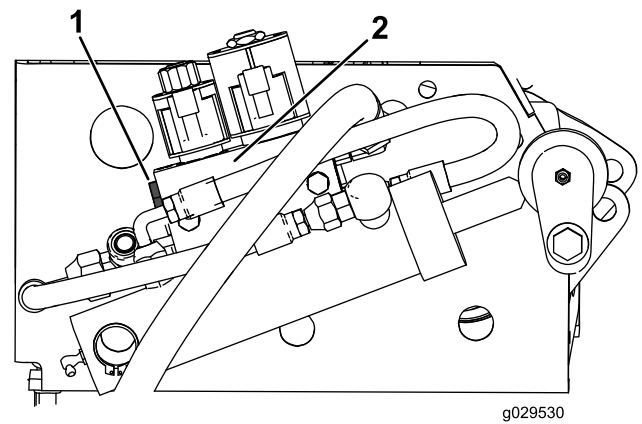


**Figure 17**

1. Cut the hose here.
2. Tee fitting
3. To the deck-lift valve
4. From the oil cooler

- C. Secure all 3 hoses to the tee fitting with hose clamps (7/8 inch).
- D. Install the short hose to the port in the oil-cooler-return hose.

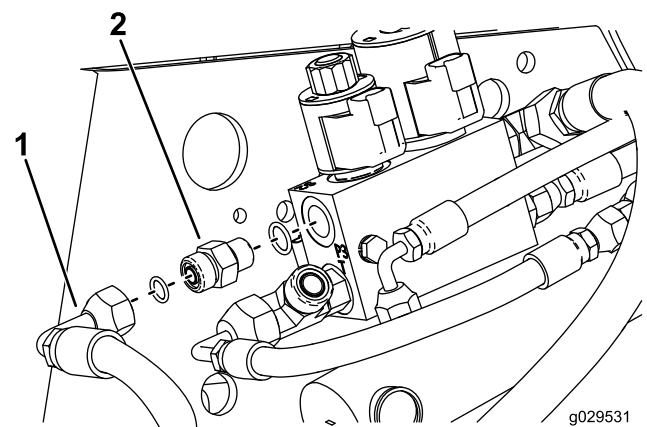
5. On the right frame, locate the deck-lift-valve assembly (Figure 18).



**Figure 18**

1. Plug
2. Valve assembly

6. Remove the plug from the left side of the valve assembly (Figure 18).
7. Thread the hydraulic valve fitting into the opening of the valve (Figure 19).



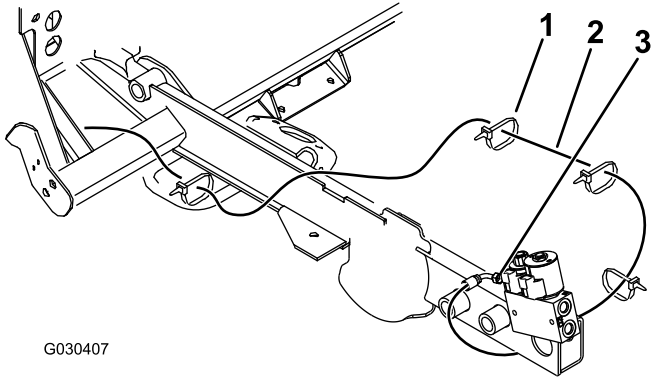
**Figure 19**

1. Hose
2. Straight fitting



8. Route the long hose under the radiator frame, over the frame cross member, and along the frame rail to the valve (Figure 20).

**Note:** The long hose will follow another hose from the transmission bay to the valve assembly.



**Figure 20**

1. Cable tie
2. Long hose
3. Valve

9. Secure the long hose with 4 cable ties (Figure 20).
10. Secure the hose fitting to the straight fitting (Figure 19).

# 5

## Installing the Relays and Switches

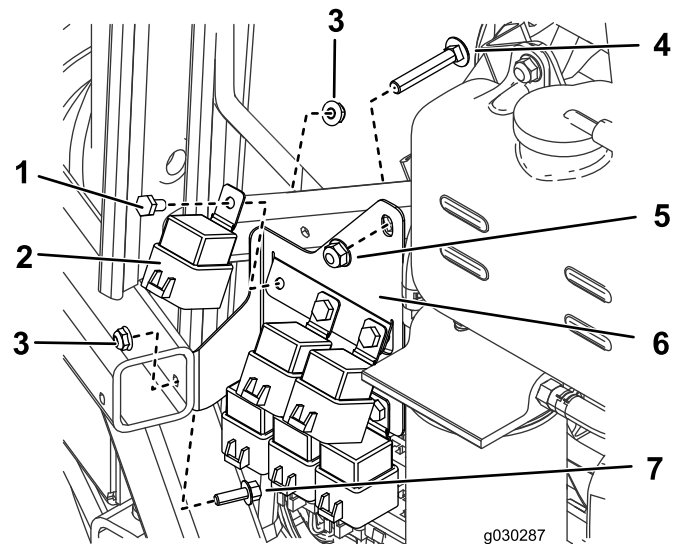
### Model 30810

#### Parts needed for this procedure:

1	Relay bracket
6	Relay
6	Bolt (1/4 x 1/2 inch)
7	Nut (1/4 inch)
1	Bolt (1/4 x 3/4 inch)
1	Decal (from Auxiliary Power Unit Kit)
2	Switch

#### Procedure

1. On the right side of the machine, mount 6 relays onto the relay bracket using 6 bolts (1/4 x 1/2 inch) and 6 nuts (1/4 inch) as shown in Figure 21.

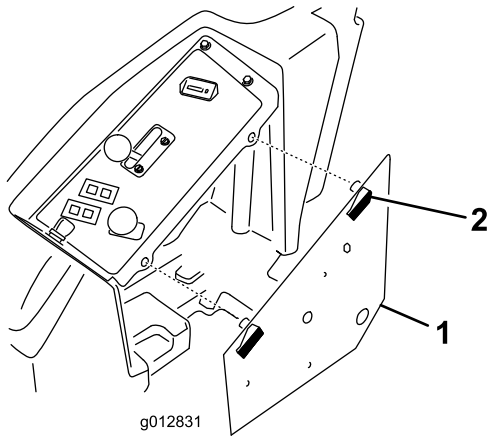


**Figure 21**

1. Bolt (1/4 x 1/2 inch)
2. Relay
3. Nut (1/4 inch)
4. Support-tube bolt
5. Support-tube nut
6. Relay bracket
7. Bolt (1/4 x 3/4 inch)

2. Remove the bolt and nut from the support tube.
3. Using a bolt (1/4 x 3/4 inch), nut (1/4 inch), and the bolt and nut that you just removed, mount the relay bracket to the machine (Figure 21).

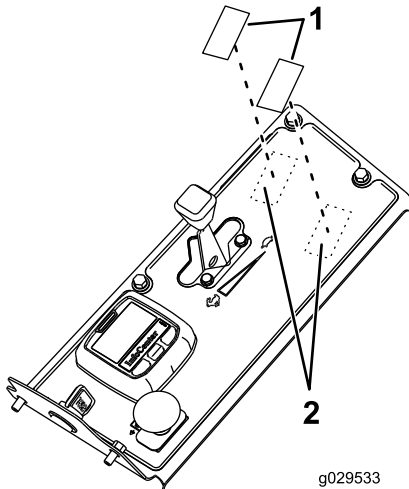
4. Unlatch the control-panel cover and move it aside (Figure 22).



**Figure 22**

1. Control panel
2. Latch

5. Locate and remove the 2 knockout plugs from the top of the control panel (Figure 23).



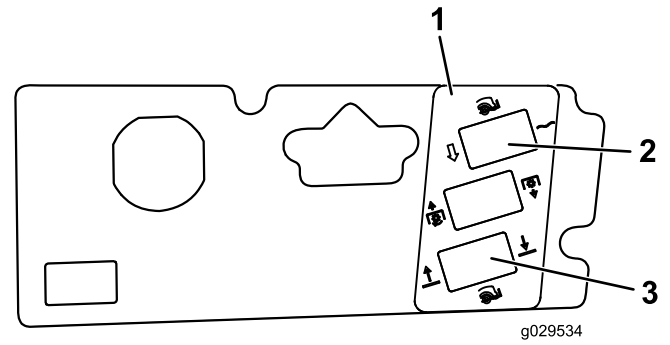
**Figure 23**

1. Knockout plugs
2. Knockout plug locations

6. Carefully cut and remove the decal material to expose the control panel holes.

**Note:** Remove only the knockout plugs and decal material for the required switches.

7. Deburr the newly exposed edges of the control panel.
8. Clean the control panel surface and affix the decal around the exposed holes (Figure 24).



**Figure 24**

1. Decal
  2. Float/power-down switch (2-position switch)
  3. Lift/lower switch (3-position switch)
9. Insert the switches into the appropriate mounting holes (Figure 24).

**Note:** Position the flat portion of the switch toward the operator.

# 6

## Installing the Relays and Switches

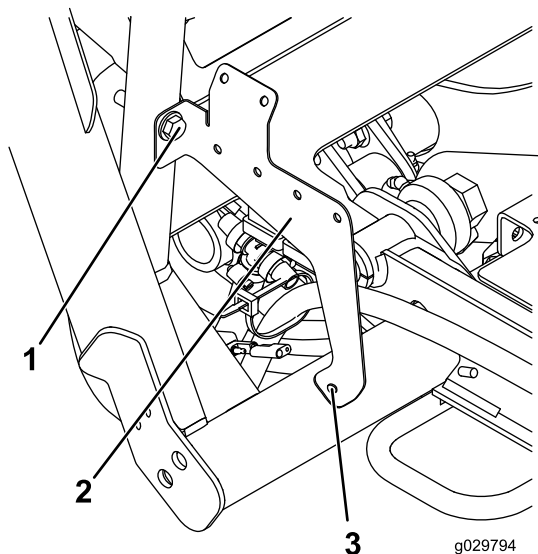
### Model 30812

#### Parts needed for this procedure:

1	Relay bracket
6	Relay
6	Bolt (1/4 x 1/2 inch)
7	Nut (1/4 inch)
1	Bolt (3/8 x 2 inches)
1	Washer (0.406 inch)
1	Nut (3/8 inch)
6	Bolt (1/4 x 1/2 inch)
6	Locknut (1/4 inch)
1	Decal (from Auxiliary Power Unit Kit)
2	Switch

#### Procedure

- Loosely mount the relay bracket to the frame using a bolt (3/8 x 2 inches), washer (0.406 inch), and nut (3/8 inch), as shown in [Figure 25](#).

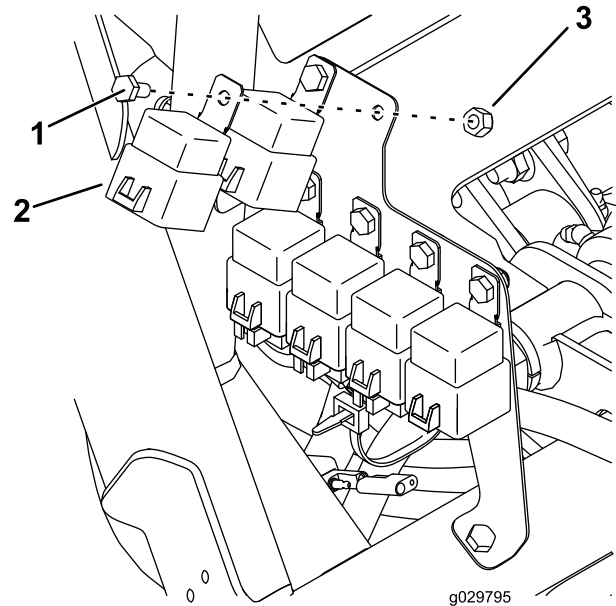


**Figure 25**

- Bolt, nut, and washer
- Relay bracket
- Mark here.

- Mark the location indicated in [Figure 25](#).

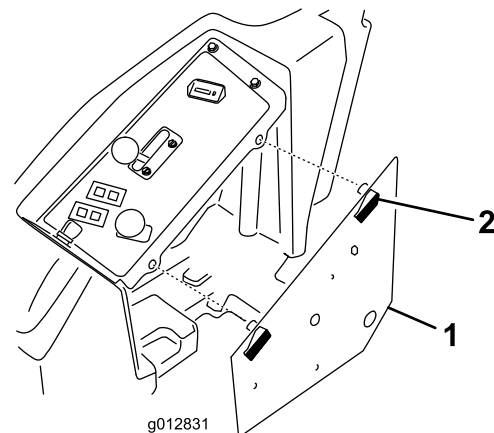
- Remove the bracket, and drill a hole (0.281 inch) through both walls of the frame in the location that you marked.
- Install the bracket with the hardware you used to loosely install the bracket and secure the bracket to the new hole with a bolt (1/4 x 2-1/2 inches) and nut (1/4 inch).
- Install the 6 relays to the bracket using 6 bolts (1/4 x 1/2 inch) and 6 locknuts (1/4 inch).



**Figure 26**

- Bolt (1/4 x 1/2 inch)
- Relay
- Locknut (1/4 inch)

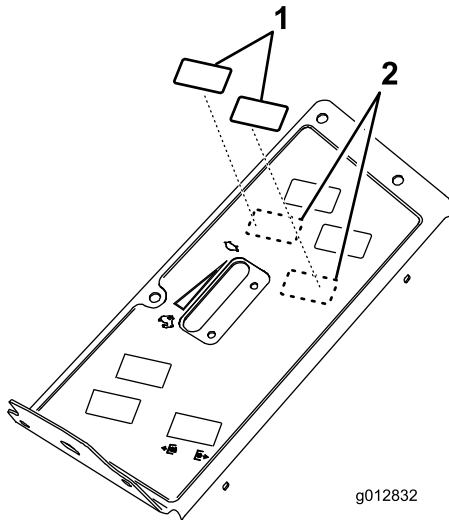
- Unlatch the control-panel cover and move it aside ([Figure 22](#)).



**Figure 27**

- Control panel
- Latch

7. Locate and remove the 2 knockout plugs from the top of the control panel (Figure 28).



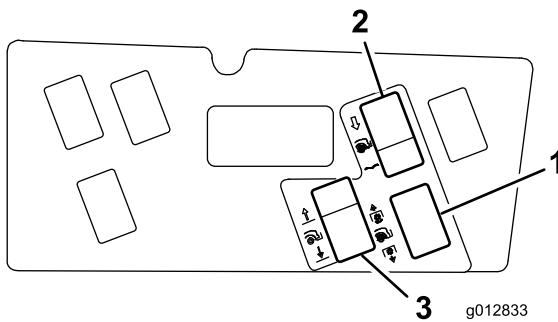
**Figure 28**

1. Knockout plugs
2. Knockout plug locations

8. Carefully cut and remove the decal material to expose the holes in the control panel.

**Note:** Remove only the knockout plugs and decal material for the required switches.

9. Deburr the newly exposed edges of the control panel.
10. Clean the control panel surface and affix the decal around the exposed holes (Figure 29).



**Figure 29**

1. Decal
2. Float/power-down switch (2-position switch)
3. Lift/lower switch (3-position switch)

11. Insert the switches into the appropriate mounting holes (Figure 29).

**Note:** Position the flat portion of the switch toward the operator.

# 7

## Installing the Wiring Harness

### Parts needed for this procedure:

1	Wiring harness
---	----------------

### Procedure

**Note:** The machine must be equipped with the Auxiliary Power Unit Kit, Toro part no. 30382.

1. Cover exposed connectors on the wiring harness with masking tape or electrical tape to keep debris out of the connectors while routing the harness.
2. Route and connect the wiring harness (Figure 30 and Figure 31) at the follows locations:

- Hydraulic-manifold connectors
- Relays (6) on the relay bracket
- Main harness connector, located under the right operator controls by the standard control module

**Note:** The main harness connector is a 2-wire Metri-pak connector (brown and tan wires)

- Deck lift in A and B

**Note:** Unplug the 2 connectors from the lift-manifold block and plug them into the wiring harness.

- Deck lift out A and B

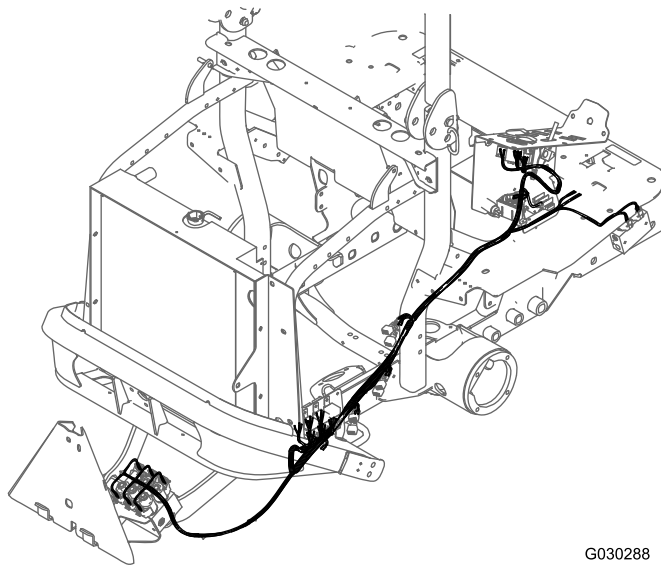
**Note:** Plug the wiring harness into the lift-block manifold where you just unplugged the 2 connectors.

- Pink power-wire connector
- Ground to the ground block
- Lift/lower switch
- Float/enable switch

3. Secure the wiring harness to the machine with cable ties.

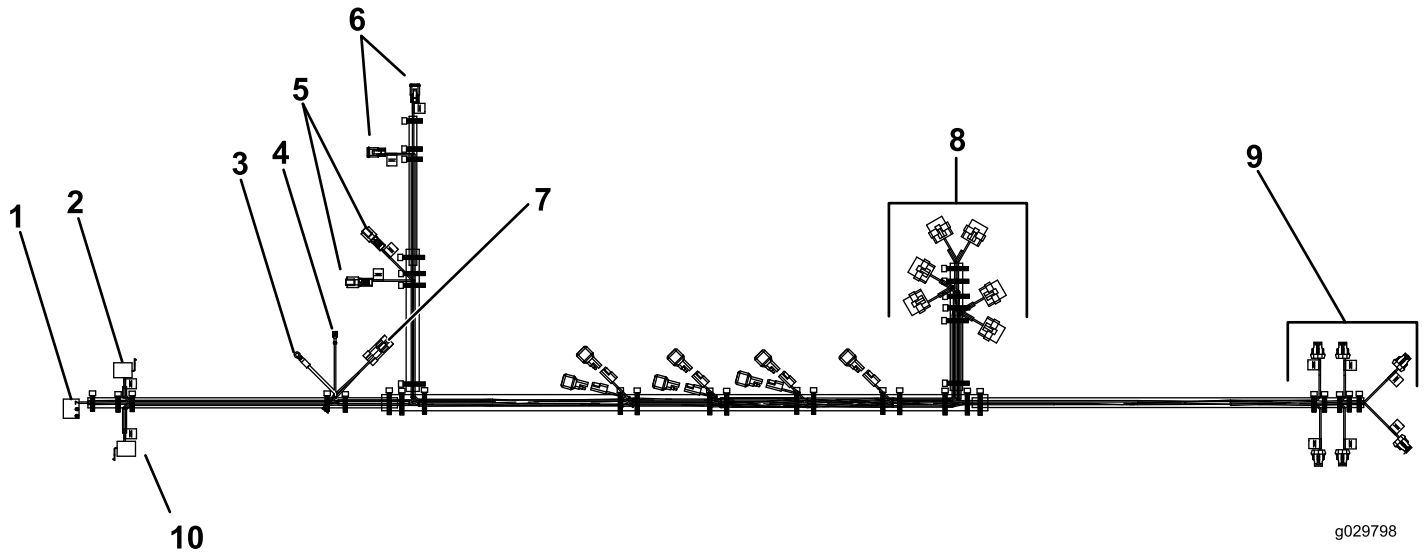
**Important:** Keep the harness away from all hot, sharp, or moving parts.

**Important:** Secure the wiring harness away from the tail pipe of the machine.



G030288

**Figure 30**



g029798

**Figure 31**

- |   |                             |
|---|-----------------------------|
| 1. Blower PTO switch (used with blower) | 6. Deck lift out (A and B)  |
| 2. Lift/lower switch                    | 7. Main wiring harness      |
| 3. Ground                               | 8. Relays (6)               |
| 4. Power                                | 9. Hydraulic manifold       |
| 5. Deck lift in (A and B)               | 10. Float/power-down switch |

# 8

## Completing Installation

### No Parts Required

### Procedure

1. Grease all the new grease fittings with Number 2 lithium-based grease.
2. Check the hydraulic fluid level and replenish as required.
3. Connect the negative (–) battery cable.
4. Start the machine and operate the rear lift. Check for leaks and replenish hydraulic fluid as necessary.

**Note:** If installed correctly, the manifold should have no electrical power when the key is in the OFF position.

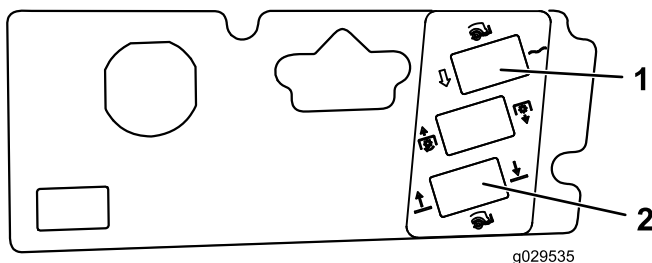
## Operation

### Lift/Lower Switch

Move the switch to the LIFT position to raise the attachment and to the LOWER position to lower the attachment (Figure 33).

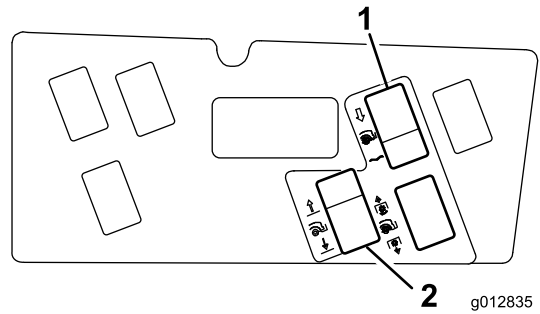
### Float/Power Down Switch

Moving the switch to the FLOAT position allows the attachment to follow the contour of the ground. Moving the switch to the POWER DOWN position adds weight from the machine to increase ground engagement force (Figure 33). Higher ground engagement force decreases the traction capacity of the machine.



**Figure 32**  
Model 30810

1. FLOAT/POWER-DOWN switch
2. LIFT/LOWER switch



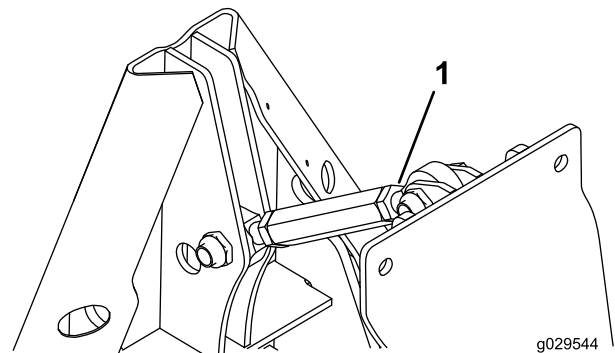
**Figure 33**  
Model 30812

1. FLOAT/POWER-DOWN switch
2. LIFT/LOWER switch

## Adjusting the Attachment Angle

To increase or decrease the engagement angle of the attachment, proceed as follows:

1. Loosen the jam nuts on the threaded link (Figure 34).
2. Rotate the hex tube until you achieve the desired angle (Figure 34).
3. Tighten the jam nut to lock the adjustment (Figure 34).
4. With the engine operating at low idle, raise the rear attachment to make sure that it does not contact the hood.



**Figure 34**

1. Threaded link

# Weight Charts for Model 30810

Use the following weight charts to determine the correct amount of front weight required for your machine.

<b>72 inch width of cut Models 30695 with 30354, 30481, or 30353 and</b>	<b>Additional Front Weight Required</b>	<b>Weight Part Number</b>	<b>Weight Description</b>	<b>Qty.</b>
Rear QAS (Model 30810) and no attachment	146 lb	125-2655-03, 125-2670, and 114-4096	Front frame weights, Weight bracket, and Suitcase weights	4 1 1
Finish Grader (Box Rake) (Model 08754)	211 lb	125-2655-03, 125-2670, and 114-4096	Front frame weights, Weight bracket, and Suitcase weights	4 1 2
Steel Drag Mat (Model 08757)	196 lb	125-2655-03, 125-2670, and 114-4096	Front frame weights, Weight bracket, and Suitcase weights	4 1 2
Tooth Rake (Model 08751)	169 lb	125-2655-03, 125-2670, and 114-4096	Front frame weights, Weight bracket, and Suitcase weights	4 1 1
Tooth rake with Spring Rake (Model 08752) attached	208 lb	125-2655-03, 125-2670, 114-4096	Front frame weights, Weight bracket, and Suitcase weights	4 1 2
Cocoa Drag Mat (Model 08758)	196 lb	125-2655-03, 125-2670, and 114-4096	Front frame weights, Weight bracket, and Suitcase weights	4 1 2
Nail Drag (Model 08781)	208 lb	125-2655-03, 125-2670, and 114-4096	Front frame weights, Weight bracket, and Suitcase weights	4 1 2
Debris Blower (Model 30393)	211 lb	125-2655-03, 125-2670, and 114-4096	Front frame weights, Weight bracket, and Suitcase weights	4 1 2
Rahn Groomer (Allied Product)	Not Approved			

<b>72 inch width of cut Models 30695 with 30354, 30481, or 30353 With hard canopy, model 30349 and</b>	<b>Additional Front Weight Required</b>	<b>Weight Part Number</b>	<b>Weight Description</b>	<b>Qty.</b>
Rear QAS (Model 30810) and no attachment	188 lb	125-2655-03, 125-2670, and 114-4096	Front frame weights, Weight bracket, and Suitcase weights	4 1 2
Finish Grader (Box Rake) (Model 08754)	253 lb	125-2655-03, 125-2670, and 114-4096	Front frame weights, Weight bracket, and Suitcase weights	4 1 3
Steel Drag Mat (Model 08757)	238 lb	125-2655-03, 125-2670, and 114-4096	Front frame weights, Weight bracket, and Suitcase weights	4 1 3
Tooth Rake (Model 08751)	211 lb	125-2655-03, 125-2670, and 114-4096	Front frame weights, Weight bracket, and Suitcase weights	4 1 2
Tooth rake with Spring Rake (Model 08752) attached	238 lb	125-2655-03, 125-2670, and 114-4096	Front frame weights, Weight bracket, and Suitcase weights	4 1 3
Cocoa Drag Mat (Model 08758)	238 lb	125-2655-03, 125-2670, and 114-4096	Front frame weights, Weight bracket, and Suitcase weights	4 1 3
Nail Drag (Model 08781)	238 lb	125-2655-03, 125-2670, and 114-4096	Front frame weights, Weight bracket, and Suitcase weights	4 1 3

Debris Blower (Model 30393)	253 lb	125-2655-03, 125-2670, and 114-4096	Front frame weights, Weight bracket, and Suitcase weights	4 1 3
Rahn Groomer (Allied Product)	Not Approved			

<b>60 or 62 inch width of cut Models 30695 with 30456 or 30457 and</b>	<b>Additional Front Weight Required</b>	<b>Weight Part Number</b>	<b>Weight Description</b>	<b>Qty.</b>
Rear QAS (Model 30810) and no attachment	146 lb	125-2655-03, 125-2670, and 114-4096	Front frame weights, Weight bracket, and Suitcase weights	4 1 1
Finish Grader (Box Rake) (Model 08754)	272 lb	125-2655-03, 125-2670, and 114-4096	Front frame weights, Weight bracket, and Suitcase weights	4 1 4
Steel Drag Mat (Model 08757)	259 lb	125-2655-03, 125-2670, and 114-4096	Front frame weights, Weight bracket, and Suitcase weights	4 1 4
Tooth Rake (Model 08751)	211 lb	125-2655-03, 125-2670, and 114-4096	Front frame weights, Weight bracket, and Suitcase weights	4 1 2
Tooth rake with Spring Rake (Model 08752) attached	252 lb	125-2655-03, 125-2670, and 114-4096	Front frame weights, Weight bracket, and Suitcase weights	4 1 3
Cocoa Drag Mat (Model 08758)	252 lb	125-2655-03, 125-2670, and 114-4096	Front frame weights, Weight bracket, and Suitcase weights	4 1 3
Nail Drag (Model 08781)	252 lb	125-2655-03, 125-2670, and 114-4096	Front frame weights, Weight bracket, and Suitcase weights	4 1 3
Debris Blower (Model 30393)	276 lb	125-2655-03, 125-2670, and 114-4096	Front frame weights, Weight bracket, and Suitcase weights	4 1 4
Rahn Groomer (Allied Product)	Not Approved			

<b>60 or 62 inch width of cut Models 30362 and 30365 With hard canopy, model 30359 and</b>	<b>Additional Front Weight Required</b>	<b>Weight Part Number</b>	<b>Weight Description</b>	<b>Qty.</b>
Rear QAS (Model 30810) and no attachment	188 lb	125-2655-03, 125-2670, and 114-4096	Front frame weights, Weight bracket, and Suitcase weights	4 1 2
Finish Grader (Box Rake) (Model 08754)	314 lb	125-2655-03, 125-2670, and 114-4096	Front frame weights, Weight bracket, and Suitcase weights	4 1 5
Steel Drag Mat (Model 08757)	301 lb	125-2655-03, 125-2670, and 114-4096	Front frame weights, Weight bracket, and Suitcase weights	4 1 5
Tooth Rake (Model 08751)	236 lb	125-2655-03, 125-2670, and 114-4096	Front frame weights, Weight bracket, and Suitcase weights	4 1 3
Tooth rake with Spring Rake (Model 08752) attached	294 lb	125-2655-03, 125-2670, and 114-4096	Front frame weights, Weight bracket, and Suitcase weights	4 1 4
Cocoa Drag Mat (Model 08758)	294 lb	125-2655-03, 125-2670, and 114-4096	Front frame weights, Weight bracket, and Suitcase weights	4 1 4
Nail Drag (Model 08781)	294 lb	125-2655-03, 125-2670, and 114-4096	Front frame weights, Weight bracket, and Suitcase weights	4 1 4



Debris Blower (Model 30393)	318 lb	125-2655-03, 125-2670, and 114-4096	Front frame weights, Weight bracket, and Suitcase weights	4 1 5
Rahn Groomer (Allied Product)	Not Approved			

## Weight Charts for Model 30812

Use the following weight charts to determine the correct amount of front weight required for your machine.

<b>72 inch width of cut Models 30495, or 30487 with 30354, 30481, or 30353 With no hard canopy, model 30349 and</b>	<b>Additional Front Weight Required</b>	<b>Weight Part Number</b>	<b>Weight Description</b>	<b>Qty.</b>
Rear QAS (Model 30812) and no attachment	0 lb	NA	—	—
Finish Grader (Box Rake) (Model 08754)	0 lb	NA	—	—
Steel Drag Mat (Model 08757)	0 lb	NA	—	—
Tooth Rake (Model 08751)	0 lb	NA	—	—
Tooth rake with Spring Rake (Model 08752) attached	0 lb	NA	—	—
Cocoa Drag Mat (Model 08758)	67 lb	125-2670 and 114-4096	Front weight bracket and 42 lb front weight	1 1
Nail Drag (Model 08781)	67 lb	125-2670 and 114-4096	Front weight bracket and 42 lb front weight	1 1
Debris Blower (Model 30393)	109 lb	125-2670 and 114-4096	Front weight bracket and 42 lb front weight	1 2
Rahn Groomer (Allied Product)	151 lb	125-2670 and 114-4096	Front weight bracket and 42 lb front weight	1 3

<b>72 inch width of cut Models 30495, or 30487 with 30354, 30481, or 30353 With hard canopy, model 30359 and</b>	<b>Additional Front Weight Required</b>	<b>Weight Part Number</b>	<b>Weight Description</b>	<b>Qty.</b>
Rear QAS (Model 30812) and no attachment	0 lb	NA	—	—
Finish Grader (Box Rake) (Model 08754)	25 lb	125-2670	Front weight bracket	1
Steel Drag Mat (Model 08757)	25 lb	125-2670	Front weight bracket	1
Tooth Rake (Model 08751)	25 lb	125-2670	Front weight bracket	1
Tooth rake with Spring Rake (Model 08752) attached	25 lb	125-2670	Front weight bracket	1 1
Cocoa Drag Mat (Model 08758)	109 lb	125-2670 and 114-4096	Front weight bracket and 42 lb front weight	1 2
Nail Drag (Model 08781)	109 lb	125-2670 and 114-4096	Front weight bracket and 42 lb front weight	1 2
Debris Blower (Model 30393)	151 lb	125-2670 and 114-4096	Front weight bracket and 42 lb front weight	1 3
Rahn Groomer (Allied Product)	Not Approved			

<b>62 inch width of cut Models 30495, or 30487 with 30456 or 30457 With no hard canopy, model 30349 and</b>	<b>Additional Front Weight Required</b>	<b>Weight Part Number</b>	<b>Weight Description</b>	<b>Qty.</b>
Rear QAS (Model 30812) and no attachment	67 lb	125-2670 and 114-4096	Front weight bracket and 42 lb front weight	1 1
Finish Grader (Box Rake) (Model 08754)	151 lb	125-2670 and 114-4096	Front weight bracket and 42 lb front weight	1 3
Steel Drag Mat (Model 08757)	151 lb	125-2670 and 114-4096	Front weight bracket and 42 lb front weight	1 3
Tooth Rake (Model 08751)	151 lb	125-2670 and 114-4096	Front weight bracket and 42 lb front weight	1 2
Tooth rake with Spring Rake (Model 08752) attached	151 lb	125-2670 and 114-4096	Front weight bracket and 42 lb front weight	1 3
Cocoa Drag Mat (Model 08758)	151 lb	125-2670 and 114-4096	Front weight bracket and 42 lb front weight	1 3
Nail Drag (Model 08781)	151 lb	125-2670 and 114-4096	Front weight bracket and 42 lb front weight	1 3
Debris Blower (Model 30393)	151 lb	125-2670 and 114-4096	Front weight bracket and 42 lb front weight	1 3
Rahn Groomer (Allied Product)	Not Approved			

<b>62 inch width of cut Models 30362 and 30365 With hard canopy, model 30359 and</b>	<b>Additional Front Weight Required</b>	<b>Weight Part Number</b>	<b>Weight Description</b>	<b>Qty.</b>
Rear QAS (Model 30812) and no attachment	109 lb	125-2670 and 114-4096	Front weight bracket and 42 lb front weight	1 2
Finish Grader (Box Rake) (Model 08754)	193 lb	125-2670 and 114-4096	Front weight bracket and 42 lb front weight	1 3
Steel Drag Mat (Model 08757)	193 lb	125-2670 and 114-4096	Front weight bracket and 42 lb front weight	1 4
Tooth Rake (Model 08751)	151 lb	125-2670 and 114-4096	Front weight bracket and 42 lb front weight	1 3
Tooth rake with Spring Rake (Model 08752) attached	193 lb	125-2670 and 114-4096	Front weight bracket and 42 lb front weight	1 4
Cocoa Drag Mat (Model 08758)	193 lb	125-2670 and 114-4096	Front weight bracket and 42 lb front weight	1 4
Nail Drag (Model 08781)	193 lb	125-2670 and 114-4096	Front weight bracket and 42 lb front weight	1 4
Debris Blower (Model 30393)	193 lb	125-2670 and 114-4096	Front weight bracket and 42 lb front weight	1 4
Rahn Groomer (Allied Product)	Not Approved			

## Operating Tips

- Read and understand the attachment *Operator's Manual* before using the machine.
- Make sure that the appropriate weight mount bracket and front weight(s) are installed for the rear attachment.
- Remove rear attachment and any loose front-end weights prior to mowing.
- Use care when operating the machine when a rear attachment is installed, because it is wider than the machine and may contact poles, fences, or trees.
- Never operate the machine near bystanders.

## Maintenance

- Lubricate the grease fittings with Number 2 lithium-based grease weekly or after every washing.
- When operating in dusty conditions, the air cleaner should be checked daily. A safety air-cleaner element is available and may be added to the existing air cleaner for additional engine protection.

**Notes:**

**Notes:**

**Notes:**

## International Distributor List

Distributor:	Country:	Phone Number:	Distributor:	Country:	Phone Number:
Agrolanc Kft	Hungary	36 27 539 640	Maquiver S.A.	Colombia	57 1 236 4079
Balama Prima Engineering Equip.	Hong Kong	852 2155 2163	Maruyama Mfg. Co. Inc.	Japan	81 3 3252 2285
B-Ray Corporation	Korea	82 32 551 2076	Mountfield a.s.	Czech Republic	420 255 704 220
Casco Sales Company	Puerto Rico	787 788 8383	Mountfield a.s.	Slovakia	420 255 704 220
Ceres S.A.	Costa Rica	506 239 1138	Munditol S.A.	Argentina	54 11 4 821 9999
CSSC Turf Equipment (pvt) Ltd.	Sri Lanka	94 11 2746100	Norma Garden	Russia	7 495 411 61 20
Cyril Johnston & Co.	Northern Ireland	44 2890 813 121	Oslinger Turf Equipment SA	Ecuador	593 4 239 6970
Cyril Johnston & Co.	Republic of Ireland	44 2890 813 121	Oy Hako Ground and Garden Ab	Finland	358 987 00733
Equiver	Mexico	52 55 539 95444	Parkland Products Ltd.	New Zealand	64 3 34 93760
Femco S.A.	Guatemala	502 442 3277	Perfetto	Poland	48 61 8 208 416
ForGarder OU	Estonia	372 384 6060	Pratoverde SRL.	Italy	39 049 9128 128
G.Y.K. Company Ltd.	Japan	81 726 325 861	Prochaska & Cie	Austria	43 1 278 5100
Geomechaniki of Athens	Greece	30 10 935 0054	RT Cohen 2004 Ltd.	Israel	972 986 17979
Golf international Turizm	Turkey	90 216 336 5993	Riversa	Spain	34 9 52 83 7500
Guandong Golden Star	China	86 20 876 51338	Lely Turfcare	Denmark	45 66 109 200
Hako Ground and Garden	Sweden	46 35 10 0000	Solvart S.A.S.	France	33 1 30 81 77 00
Hako Ground and Garden	Norway	47 22 90 7760	Spypros Stavrinides Limited	Cyprus	357 22 434131
Hayter Limited (U.K.)	United Kingdom	44 1279 723 444	Surge Systems India Limited	India	91 1 292299901
Hydroturf Int. Co Dubai	United Arab Emirates	97 14 347 9479	T-Markt Logistics Ltd.	Hungary	36 26 525 500
Hydroturf Egypt LLC	Egypt	202 519 4308	Toro Australia	Australia	61 3 9580 7355
Irrimac	Portugal	351 21 238 8260	Toro Europe NV	Belgium	32 14 562 960
Irrigation Products Int'l Pvt Ltd.	India	0091 44 2449 4387	Valtech	Morocco	212 5 3766 3636
Jean Heybroek b.v.	Netherlands	31 30 639 4611	Victus Emak	Poland	48 61 823 8369

### European Privacy Notice

#### The Information Toro Collects

Toro Warranty Company (Toro) respects your privacy. In order to process your warranty claim and contact you in the event of a product recall, we ask you to share certain personal information with us, either directly or through your local Toro company or dealer.

The Toro warranty system is hosted on servers located within the United States where privacy law may not provide the same protection as applies in your country.

BY SHARING YOUR PERSONAL INFORMATION WITH US, YOU ARE CONSENTING TO THE PROCESSING OF YOUR PERSONAL INFORMATION AS DESCRIBED IN THIS PRIVACY NOTICE.

#### The Way Toro Uses Information

Toro may use your personal information to process warranty claims, to contact you in the event of a product recall and for any other purpose which we tell you about. Toro may share your information with Toro's affiliates, dealers or other business partners in connection with any of these activities. We will not sell your personal information to any other company. We reserve the right to disclose personal information in order to comply with applicable laws and with requests by the appropriate authorities, to operate our systems properly or for our own protection or that of other users.

#### Retention of your Personal Information

We will keep your personal information as long as we need it for the purposes for which it was originally collected or for other legitimate purposes (such as regulatory compliance), or as required by applicable law.

#### Toro's Commitment to Security of Your Personal Information

We take reasonable precautions in order to protect the security of your personal information. We also take steps to maintain the accuracy and current status of personal information.

#### Access and Correction of your Personal Information

If you would like to review or correct your personal information, please contact us by email at [legal@toro.com](mailto:legal@toro.com).

### Australian Consumer Law

Australian customers will find details relating to the Australian Consumer Law either inside the box or at your local Toro Dealer.



# Toro General Commercial Product Warranty

## A Two-Year Limited Warranty

### Conditions and Products Covered

The Toro Company and its affiliate, Toro Warranty Company, pursuant to an agreement between them, jointly warrant your Toro Commercial product ("Product") to be free from defects in materials or workmanship for two years or 1500 operational hours\*, whichever occurs first. This warranty is applicable to all products with the exception of Aerators (refer to separate warranty statements for these products). Where a warrantable condition exists, we will repair the Product at no cost to you including diagnostics, labor, parts, and transportation. This warranty begins on the date the Product is delivered to the original retail purchaser.

\* Product equipped with an hour meter.

### Instructions for Obtaining Warranty Service

You are responsible for notifying the Commercial Products Distributor or Authorized Commercial Products Dealer from whom you purchased the Product as soon as you believe a warrantable condition exists. If you need help locating a Commercial Products Distributor or Authorized Dealer, or if you have questions regarding your warranty rights or responsibilities, you may contact us at:

Toro Commercial Products Service Department  
Toro Warranty Company  
8111 Lyndale Avenue South  
Bloomington, MN 55420-1196  
  
952-888-8801 or 800-952-2740  
E-mail: commercial.warranty@toro.com

### Owner Responsibilities

As the Product owner, you are responsible for required maintenance and adjustments stated in your *Operator's Manual*. Failure to perform required maintenance and adjustments can be grounds for disallowing a warranty claim.

### Items and Conditions Not Covered

Not all product failures or malfunctions that occur during the warranty period are defects in materials or workmanship. This warranty does not cover the following:

- Product failures which result from the use of non-Toro replacement parts, or from installation and use of add-on, or modified non-Toro branded accessories and products. A separate warranty may be provided by the manufacturer of these items.
- Product failures which result from failure to perform recommended maintenance and/or adjustments. Failure to properly maintain your Toro product per the Recommended Maintenance listed in the *Operator's Manual* can result in claims for warranty being denied.
- Product failures which result from operating the Product in an abusive, negligent, or reckless manner.
- Parts subject to consumption through use unless found to be defective. Examples of parts which are consumed, or used up, during normal Product operation include, but are not limited to, brake pads and linings, clutch linings, blades, reels, rollers and bearings (sealed or greasable), bed knives, spark plugs, castor wheels and bearings, tires, filters, belts, and certain sprayer components such as diaphragms, nozzles, and check valves, etc.
- Failures caused by outside influence. Conditions considered to be outside influence include, but are not limited to, weather, storage practices, contamination, use of unapproved fuels, coolants, lubricants, additives, fertilizers, water, or chemicals, etc.
- Failure or performance issues due to the use of fuels (e.g. gasoline, diesel, or biodiesel) that do not conform to their respective industry standards.

- Normal noise, vibration, wear and tear, and deterioration.
- Normal "wear and tear" includes, but is not limited to, damage to seats due to wear or abrasion, worn painted surfaces, scratched decals or windows, etc.

### Parts

Parts scheduled for replacement as required maintenance are warranted for the period of time up to the scheduled replacement time for that part. Parts replaced under this warranty are covered for the duration of the original product warranty and become the property of Toro. Toro will make the final decision whether to repair any existing part or assembly or replace it. Toro may use remanufactured parts for warranty repairs.

### Deep Cycle and Lithium-Ion Battery Warranty:

Deep cycle and Lithium-Ion batteries have a specified total number of kilowatt-hours they can deliver during their lifetime. Operating, recharging, and maintenance techniques can extend or reduce total battery life. As the batteries in this product are consumed, the amount of useful work between charging intervals will slowly decrease until the battery is completely worn out. Replacement of worn out batteries, due to normal consumption, is the responsibility of the product owner. Battery replacement may be required during the normal product warranty period at owner's expense. Note: (Lithium-Ion battery only): A Lithium-Ion battery has a part only prorated warranty beginning year 3 through year 5 based on the time in service and kilowatt hours used. Refer to the *Operator's Manual* for additional information.

### Maintenance is at Owner's Expense

Engine tune-up, lubrication, cleaning and polishing, replacement of filters, coolant, and completing recommended maintenance are some of the normal services Toro products require that are at the owner's expense.

### General Conditions

Repair by an Authorized Toro Distributor or Dealer is your sole remedy under this warranty.

**Neither The Toro Company nor Toro Warranty Company is liable for indirect, incidental or consequential damages in connection with the use of the Toro Products covered by this warranty, including any cost or expense of providing substitute equipment or service during reasonable periods of malfunction or non-use pending completion of repairs under this warranty. Except for the Emissions warranty referenced below, if applicable, there is no other express warranty. All implied warranties of merchantability and fitness for use are limited to the duration of this express warranty.**

Some states do not allow exclusions of incidental or consequential damages, or limitations on how long an implied warranty lasts, so the above exclusions and limitations may not apply to you. This warranty gives you specific legal rights, and you may also have other rights which vary from state to state.

### Note regarding engine warranty:

The Emissions Control System on your Product may be covered by a separate warranty meeting requirements established by the U.S. Environmental Protection Agency (EPA) and/or the California Air Resources Board (CARB). The hour limitations set forth above do not apply to the Emissions Control System Warranty. Refer to the Engine Emission Control Warranty Statement supplied with your product or contained in the engine manufacturer's documentation for details.

### Countries Other than the United States or Canada

Customers who have purchased Toro products exported from the United States or Canada should contact their Toro Distributor (Dealer) to obtain guarantee policies for your country, province, or state. If for any reason you are dissatisfied with your Distributor's service or have difficulty obtaining guarantee information, contact the Toro importer.