



# Ultra Sonic Boom™ Finishing Kit

## 2013 and After Multi Pro® 5800 Turf Sprayer

Model No. 130-8229

Form No. 3396-881 Rev A

### Installation Instructions

**Note:** The Ultra Sonic Boom Leveling Kit (Toro part number 41219) is required to install this kit.

**Note:** Determine the left and right sides of the machine from the normal operating position.

#### **⚠ WARNING**

##### **CALIFORNIA Proposition 65 Warning**

This product contains a chemical or chemicals known to the State of California to cause cancer, birth defects, or reproductive harm.

### Loose Parts

Use the chart below to verify that all parts have been shipped.

Procedure	Description	Qty.	Use
<b>1</b>	Valve-mount bracket	1	Install the valve-mount bracket.
	Hydraulic manifold block (ordered separately)	1	
	Hydraulic fitting (ordered separately)	4	
<b>2</b>	Mounting bracket	1	Mount the electronic controller.
	Wiring harness	1	
	Electronic controller (ordered separately)	1	
	Bolt (1/4 x 1-1/8 inch) (ordered separately)	4	
	Locknut (1/4 inch) (ordered separately)	4	



# 1

## Installing the Valve-Mount Bracket

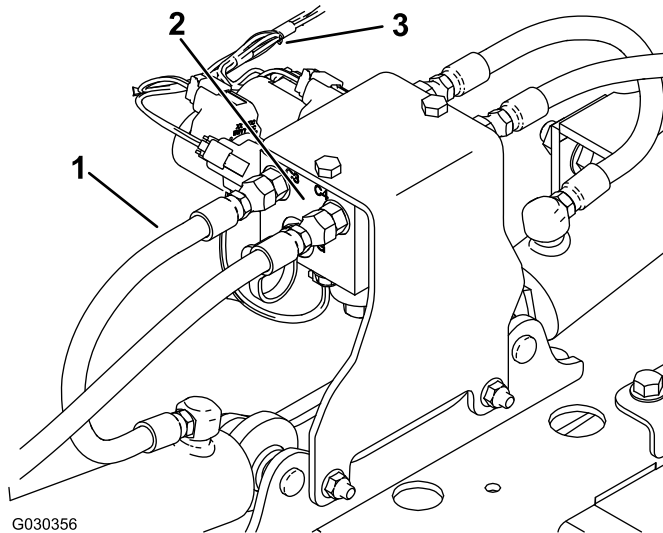
### Parts needed for this procedure:

1	Valve-mount bracket
1	Hydraulic manifold block (ordered separately)
4	Hydraulic fitting (ordered separately)

### Procedure

**Note:** You can find the hydraulic manifold block and hydraulic fittings in the Ultrasonic Boom Leveling Kit.

1. Disconnect the wiring harness from the hydraulic manifold block (Figure 1).

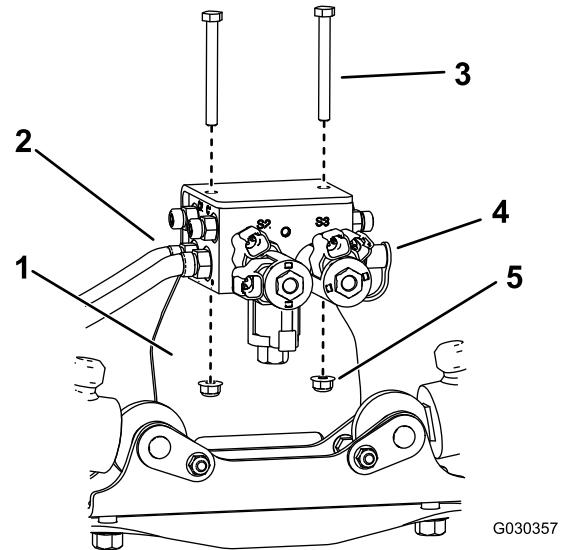


**Figure 1**

1. Hose
2. Hydraulic manifold block
3. Wiring harness

2. Label all the hoses connected to the hydraulic manifold block and disconnect them from the block (Figure 1).

3. Loosen the 2 hydraulic connectors on the right side and the gauge port on the left side of the hydraulic manifold block (Figure 2).



**Figure 2**

Front side of the hydraulic manifold block

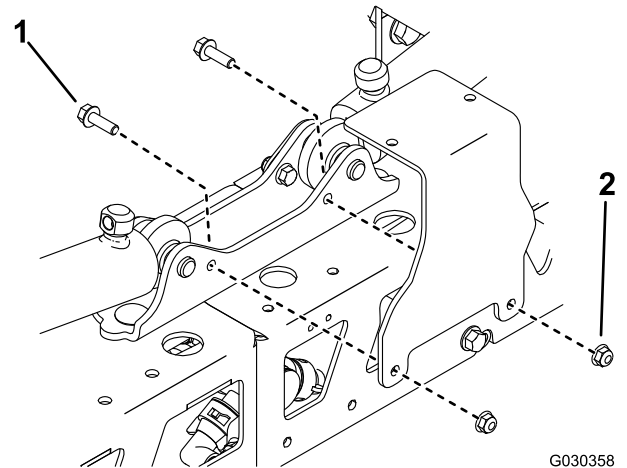
1. Mounting bracket
2. Hydraulic connector
3. Bolt (5/16 x 3 inch)
4. Gauge port
5. Nut (5/16 inch)

4. Remove the hydraulic manifold block from the mounting bracket (Figure 2).

**Note:** Retain the fasteners.

5. Remove and retain the 2 hydraulic connectors and gauge port from the hydraulic manifold (Figure 2).
6. Remove the mounting bracket from the machine (Figure 3).

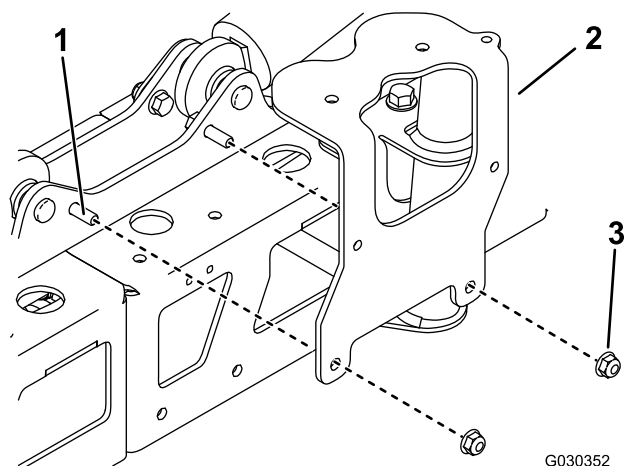
**Note:** Retain the fasteners.



**Figure 3**

1. Bolt (5/16 x 1 inch)
2. Nut (5/16 inch)

7. Install the valve-mount bracket using the 2 bolts (5/16 x 1 inch) and 2 locknuts (5/16 inch) that you previously removed (Figure 4).



**Figure 4**

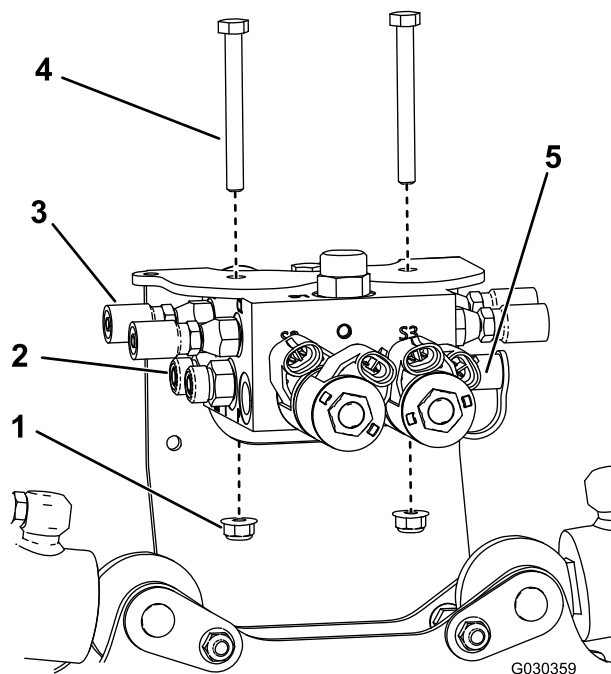
1. Bolt (5/16 x 1 inch)
2. Nut (5/16 inch)
3. Valve-mount bracket.

10. Install the new hydraulic manifold block onto the valve-mount bracket with the 2 bolts (5/16 x 3 inch) and 2 locknuts (5/16 inch) that you previously removed (Figure 5).
11. Tighten the 2 hydraulic connectors and gauge port.
12. Tighten all fittings on the hydraulic manifold block and valve-mount bracket.
13. Install the hydraulic hoses into the fittings in the corresponding ports on the hydraulic manifold block.

**Important:** Ensure that you install the hoses correctly. The hose (3/8 inch) from the return filter connects to the “T” port and the other hose (3/8 inch) connects to the “P” port. The hoses from the base end of the cylinders connect ports C1 and C3, and the hoses from the rod end of the cylinders connect to ports C2 and C4.

14. Purge the hydraulic system. Refer to the *Operator's Manual* for the machine.

8. Install the hydraulic fittings into ports C1 through C4 in the new hydraulic manifold block (Figure 5).



**Figure 5**

Front side of the hydraulic manifold block

1. Nut (5/16 inch)
2. Hydraulic connector
3. Hydraulic fitting
4. Bolt (5/16 x 3 inch)
5. Gauge port

9. Install the 2 hydraulic connectors and gauge port to the new hydraulic manifold block (Figure 5).

# 2

## Mounting the Electronic Controller

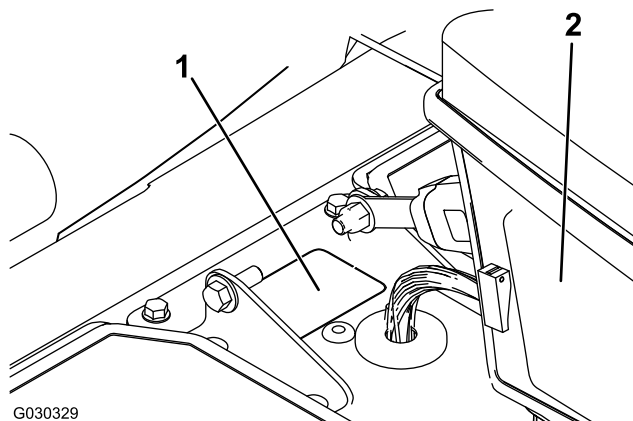
### Parts needed for this procedure:

1	Mounting bracket
1	Wiring harness
1	Electronic controller (ordered separately)
4	Bolt (1/4 x 1-1/8 inch) (ordered separately)
4	Locknut (1/4 inch) (ordered separately)

### Procedure

**Note:** You can find the electronic controller, bolts, and locknuts in the Ultrasonic Boom Leveling Kit.

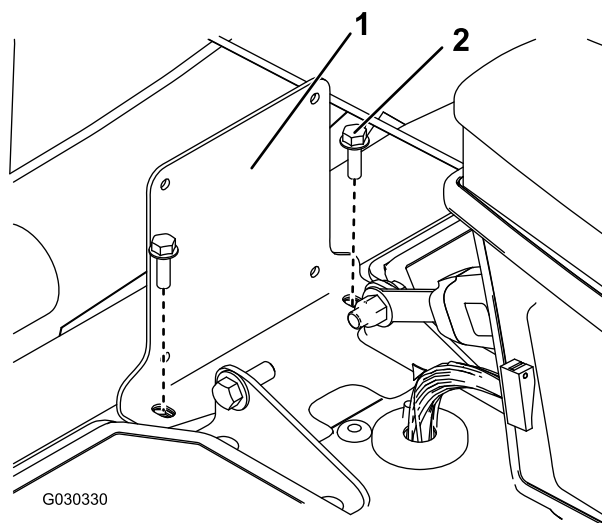
1. Behind the control console, remove the knockout plug (Figure 6).



**Figure 6**

1. Knockout plug
2. Control console

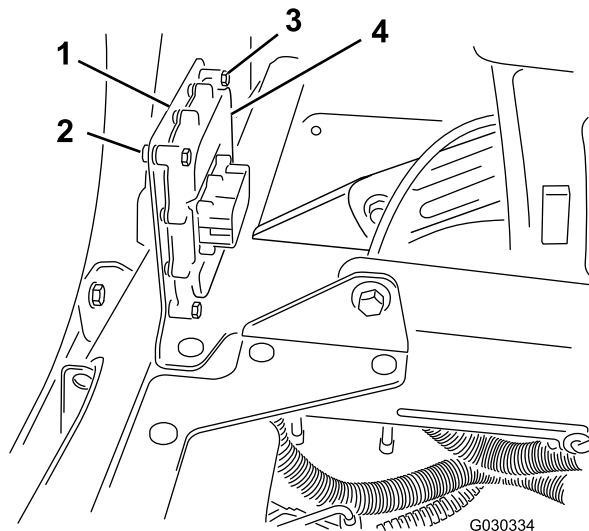
2. Remove the 2 bolts and install the mounting bracket to the machine seat frame (Figure 7).



**Figure 7**

1. Mounting bracket
2. Bolt

3. Secure the electronic controller to the mounting bracket with 4 bolts (1/4 x 1-1/8 inch) and 4 locknuts (1/4 inch) as shown in Figure 8.



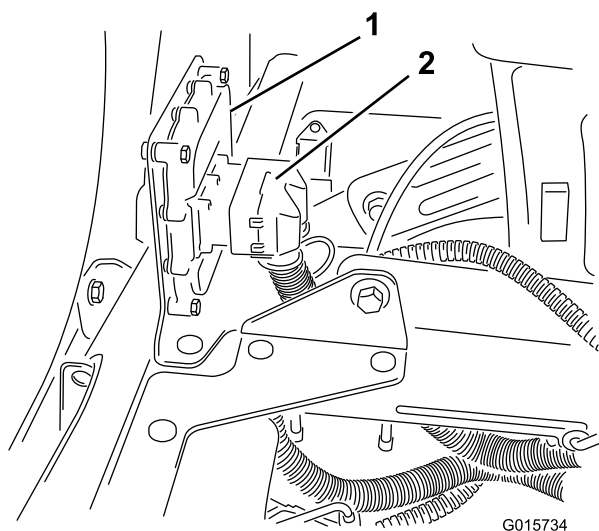
**Figure 8**

1. Mounting bracket
2. Locknut (1/4 inch)
3. Bolt (1/4 x 1-1/8 inch)
4. Electronic controller

4. Route the electronic controller terminal of the wiring harness through the knockout hole.

5. Connect the terminal of the wiring harness into the electronic controller (Figure 9).

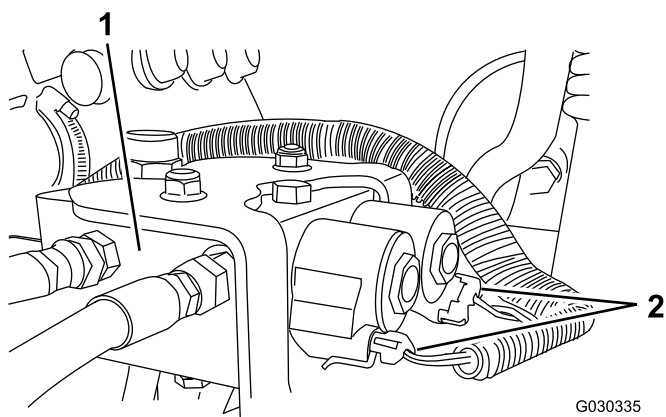
**Note:** The controller connection is keyed and can be connected in only 1 way.



**Figure 9**

1. Electronic controller
2. Wiring harness terminal

- 
6. Route the wiring harness to the hydraulic manifold.



**Figure 10**

- 
7. Continue installing the Ultra Sonic Boom Leveling Kit; refer to the *Installation Instructions* for the kit.

**Notes:**

**Notes:**



**Count on it.**