



Ultra Sonic Boom™ Finishing Kit

2013 and After Multi Pro® 1750 Turf Sprayer

Model No. 130-8227

Installation Instructions

Note: The Ultra Sonic Boom Leveling Kit (Model No. 41219) is required to install this kit.

Note: Determine the left and right sides of the machine from the normal operating position.

⚠ WARNING

CALIFORNIA Proposition 65 Warning

This product contains a chemical or chemicals known to the State of California to cause cancer, birth defects, or reproductive harm.

Use of this product may cause exposure to chemicals known to the State of California to cause cancer, birth defects, or other reproductive harm.

Loose Parts

Use the chart below to verify that all parts have been shipped.

Procedure	Description	Qty.	Use
1	No parts required	–	Prepare the machine.
2	No parts required	–	Disconnect the battery.
3	Wire harness	1	Route the wire harness.
4	Lift-manifold bracket Electronic controller cover	1 1	Install the lift-manifold bracket and cover.
5	No parts required	–	Connect the battery.



1

Preparing the Machine

No Parts Required

Procedure

1. Park the machine on a level surface.
2. Engage the parking brake.
3. Shut off the engine and remove the key.

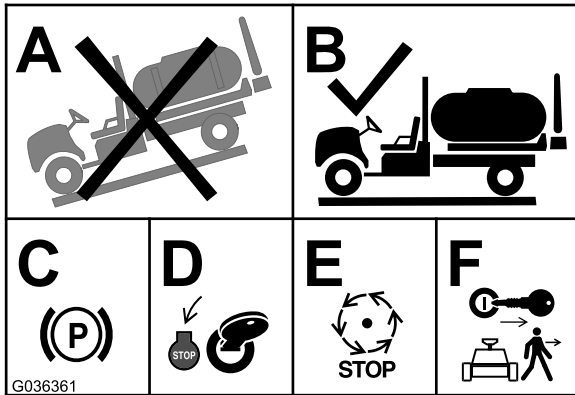


Figure 1

2

Disconnecting the Battery

No Parts Required

Procedure

⚠ WARNING

Incorrect battery cable routing could damage the sprayer and cables causing sparks. Sparks can cause the battery gasses to explode, resulting in personal injury.

Always *disconnect* the negative (black) battery cable before disconnecting the positive (red) cable.

⚠ WARNING

Battery terminals or metal tools could short against metal sprayer components causing sparks. Sparks can cause the battery gasses to explode, resulting in personal injury.

- When removing or installing the battery, do not allow the battery terminals to touch any metal parts of the sprayer.
- Do not allow metal tools to short between the battery terminals and metal parts of the sprayer.

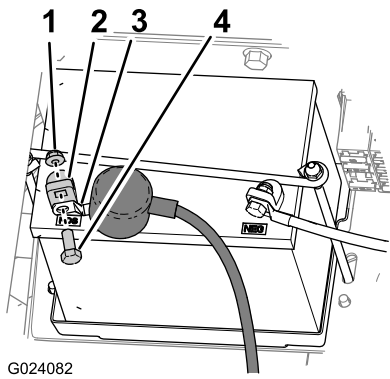
Disconnect the battery by removing the bolt and nut that secures the terminal of the positive-battery cable to the positive post of the battery (Figure 2).

Note: Ensure that the terminal of the battery cable does not touch the post.

⚠ CAUTION

If you leave the key in the ignition switch, someone could accidentally start the engine and seriously injure you or other bystanders.

Remove the key from the ignition switch before you install the kit.



G024082

g024082

Figure 2

- | | |
|-----------------|--------------------------------------|
| 1. Nut | 3. Terminal (positive-battery cable) |
| 2. Battery post | 4. Bolt |

3

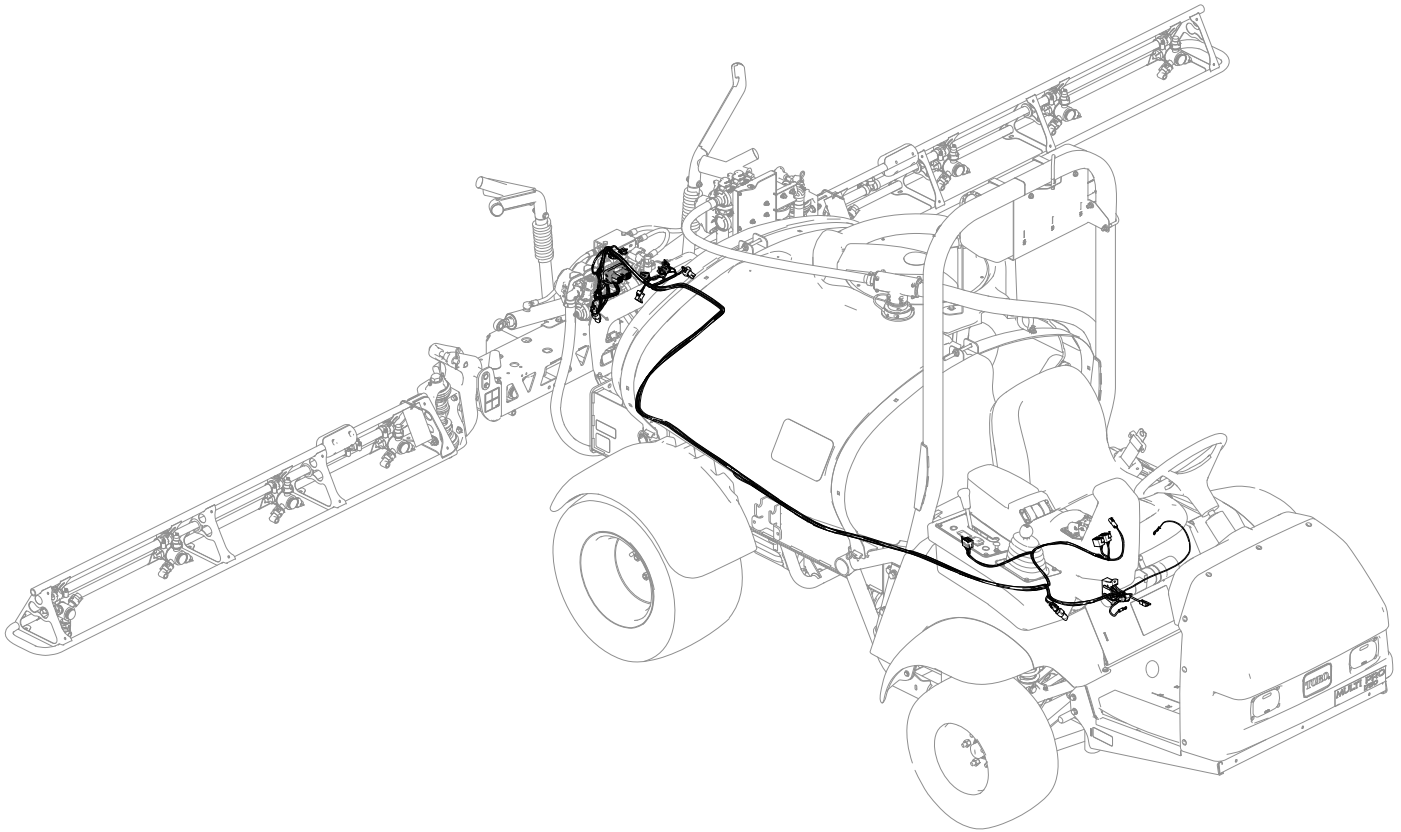
Routing the Wire Harness

Parts needed for this procedure:

1	Wire harness
---	--------------

Preparing to Route the Wire Harness

Use the following graphic as an outline of routing the wire harness to the machine ([Figure 3](#)).



g209688

Figure 3

Routing the Wire Harness to the Front of the Machine

Route the wire harness from the rear of the machine to the console as shown in [Figure 4](#).

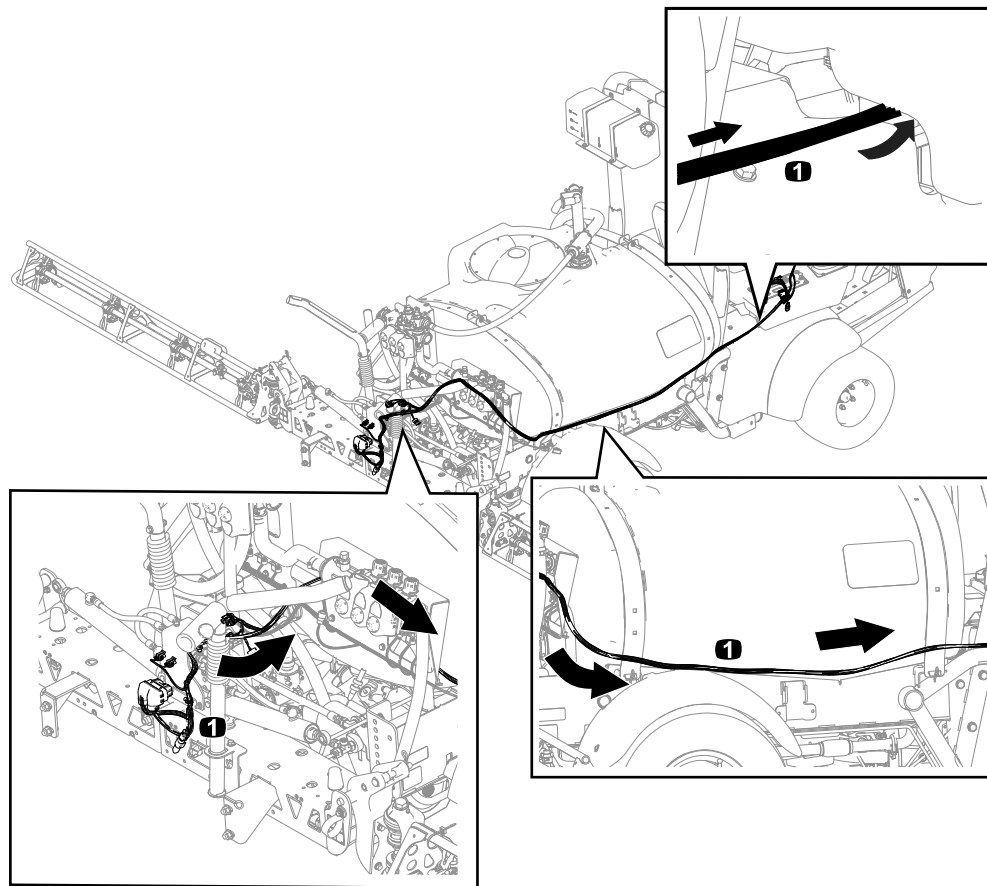


Figure 4

g208589

1. Wire harness

Installing the Switches

1. Route the 8-socket connectors through the console ([Figure 5](#)).
2. Install the ultra sonic-mode switch and the boom-lift switches; refer to the *Installation Instructions* for the ultra sonic boom leveling kit.

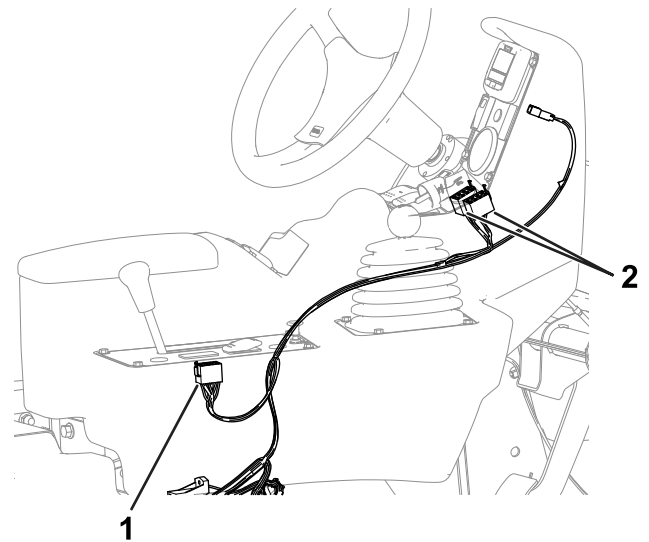


Figure 5

g210252

1. 8-socket connector—ultra sonic-mode switch
2. 8-socket connector—boom-lift switch

Installing the Wire Harness to the Fuse Block

1. Route the wire harness under the seat (Figure 6).

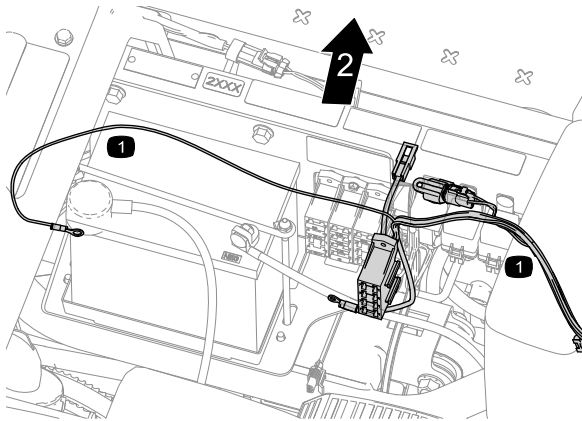


Figure 6

g210299

1. Wire harness
2. Front of the machine

2. Install the kit fuse block to the machine fuse block (Figure 7).

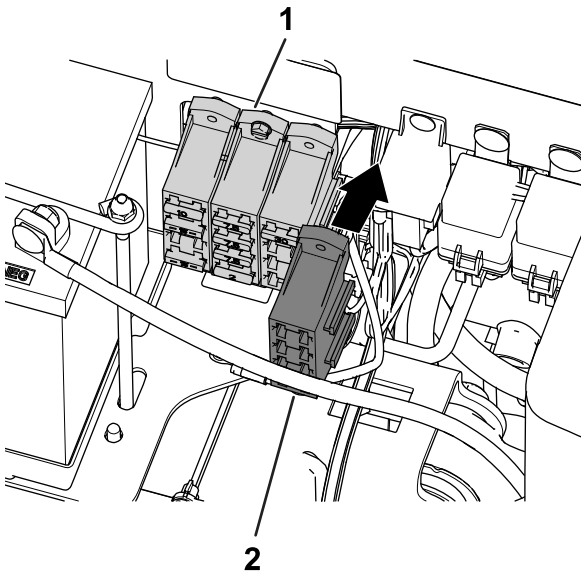


Figure 7

g208927

1. Fuse block—machine
2. Fuse block—ultra sonic boom finishing kit

3. Install the power circuit by attaching the connectors for the machine fuse block and the kit fuse block (Figure 8).

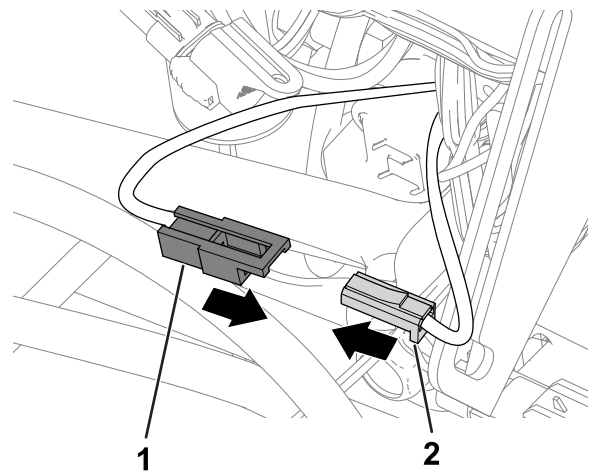


Figure 8

g210250

1. Connector—ultra sonic boom finishing kit
2. Connector—machine boom finishing kit

Installing the Wire Harness to the Terminal Block

Connect the ground wire to the terminal block (Figure 9).

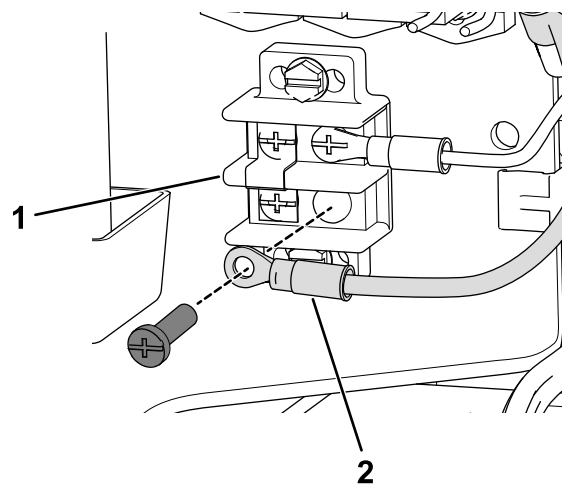


Figure 9

g208928

1. Terminal block
2. Ground wire—ultra sonic boom finishing kit wire harness

Installing the Wire Harness to the Battery

1. Route the harness to the left from the side console to the flasher module.
2. Route the harness leg with the ring terminal to the positive post of the battery (Figure 10).

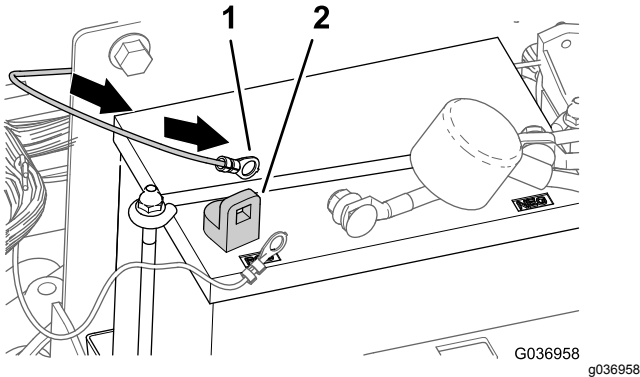


Figure 10

1. Ring terminal
2. Positive (+) battery post

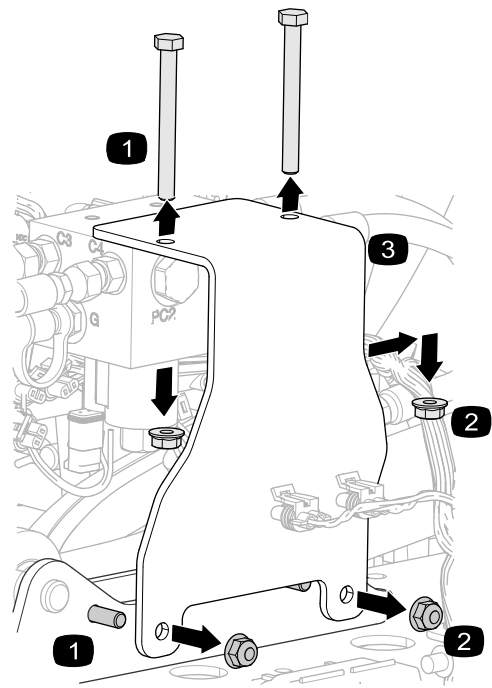


Figure 11

1. Bolt
2. Nut
3. Mounting bracket

g208941

4

Installing the Lift-Manifold Bracket and Cover

Parts needed for this procedure:

1	Lift-manifold bracket
1	Electronic controller cover

Procedure

1. Remove the nuts and bolts that secure the mounting bracket to the lift-cylinder manifold and the mount plate (Figure 11).

Retain and set aside the nuts and bolts.

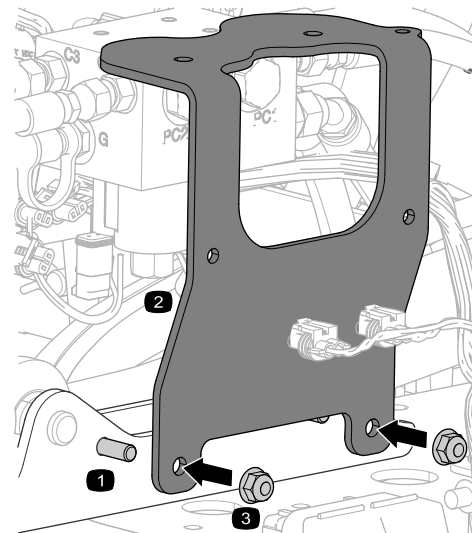


Figure 12

1. Bolt
2. Lift-manifold bracket
3. Nut

g208940

3. Torque the nuts to 1978 to 2542 N·cm (175 to 225 in·lb).
4. Secure the new lift-cylinder manifold to the lift-manifold bracket; refer to the *Installation Instructions* for the ultra sonic boom leveling kit.

5. Install the electronic controller cover; refer to the *Installation Instructions* for the ultra sonic boom leveling kit.

5

Connecting the Battery

No Parts Required

Procedure

1. Align the ring terminal for the machine wire harness, the ring terminal of the kit wire harness, and the terminal for the positive battery cable to the positive battery post (Figure 13).

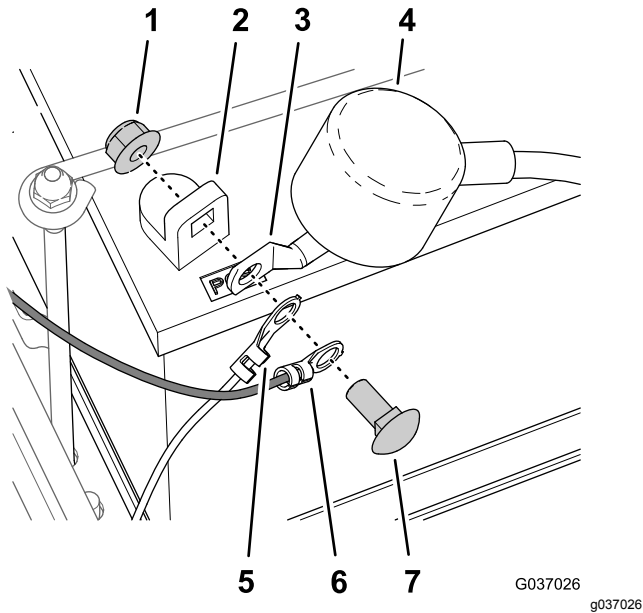


Figure 13

- | | |
|--------------------------------------|---|
| 1. Nut | 5. Ring terminal (machine wire harness) |
| 2. Positive battery post | 6. Ring terminal (kit wire harness) |
| 3. Terminal (positive battery cable) | 7. Bolt |
| 4. Insulator cover | |

2. Secure the ring terminals and battery terminal to the battery post (Figure 13) with the bolt and nut removed in [2 Disconnecting the Battery](#) (page 2).
3. Align the insulator cover over the positive battery terminal (Figure 13).



Count on it.