



Dual Function Auxiliary Hydraulics Kit

RT1200 Traction Unit

Model No. 25515

Model No. 25515E

Installation Instructions

⚠ WARNING

CALIFORNIA Proposition 65 Warning

This product contains a chemical or chemicals known to the State of California to cause cancer, birth defects, or reproductive harm.

Note: Determine the left and right sides of the machine from the normal operating position.

Loose Parts

Use the chart below to verify that all parts have been shipped.

Description	Qty.	Use
Valve-mount plate	1	Install the kit.
Solenoid valve	1	
Flat washer	3	
Hex-head bolt	3	
Hex plug	4	
Small straight fitting	1	
Large straight fitting	2	
Hex-head-flange bolt	2	

Installing the Kit

1. Move the machine to a level surface and engage the parking brake.
2. Shut off the engine, wait for all moving parts to stop, and remove the key from the switch.
3. Install the small straight fitting and the 2 large straight fittings onto the solenoid valve as shown in [Figure 1](#).

Note: The O-rings may already be installed on the fittings.

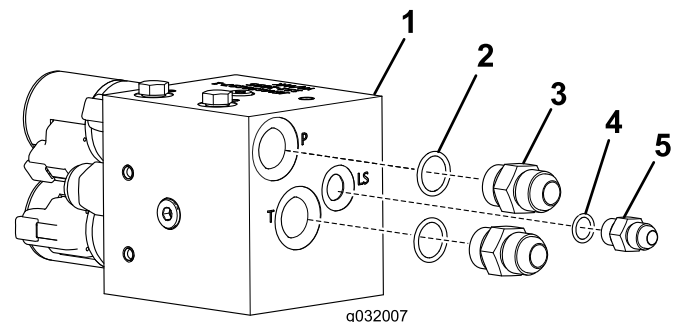


Figure 1

1. Solenoid valve
 2. Large O-ring (2)
 3. Large straight fitting (2)
 4. Small O-ring
 5. Small straight fitting
4. Torque the small straight fitting to 15 to 20 N·m (11 to 15 ft-lb) and the 2 large straight fittings to 47 to 58 N·m (35 to 43 ft-lb).
 5. Install the solenoid valve and attached fittings onto the valve-mount plate with 3 hex-head bolts and 3 flat washers ([Figure 2](#)).



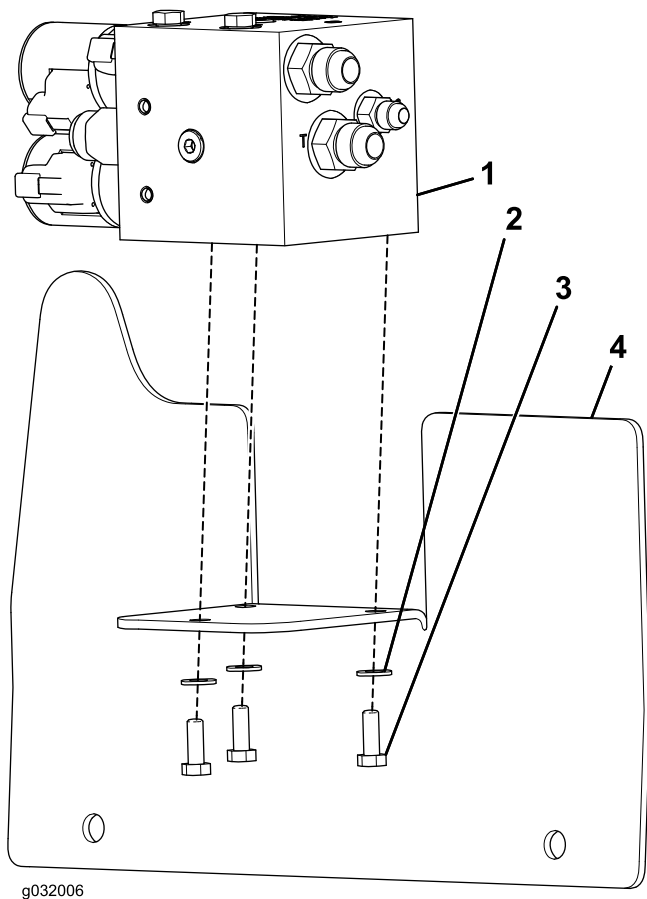


Figure 2

- | | |
|---|----------------------|
| 1. Solenoid valve and attached fittings | 3. Bolt (3) |
| 2. Flat washer (3) | 4. Valve-mount plate |

6. Remove the existing cover plate from the rear of the machine as shown in [Figure 3](#).

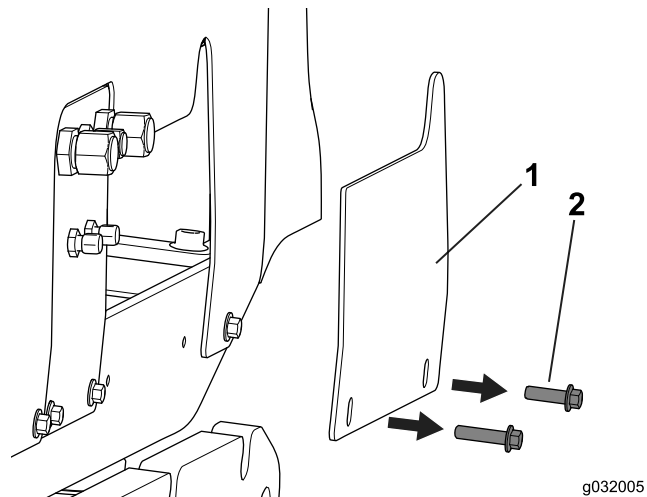


Figure 3

- | | |
|----------------|-------------|
| 1. Cover plate | 2. Bolt (2) |
|----------------|-------------|

7. Install the valve-mount plate (with the attached solenoid valve and fittings) onto the rear of the machine with the bolts that you previously removed in step 6.
8. Locate the hydraulic hoses for the kit at the rear of the machine, unbind the unconnected end of the hoses, and remove the end plugs or caps.

Note: Each hose end is labelled as to which fitting it connects.

9. Attach the hydraulic hoses to the fittings on the solenoid valve as shown in [Figure 4](#).

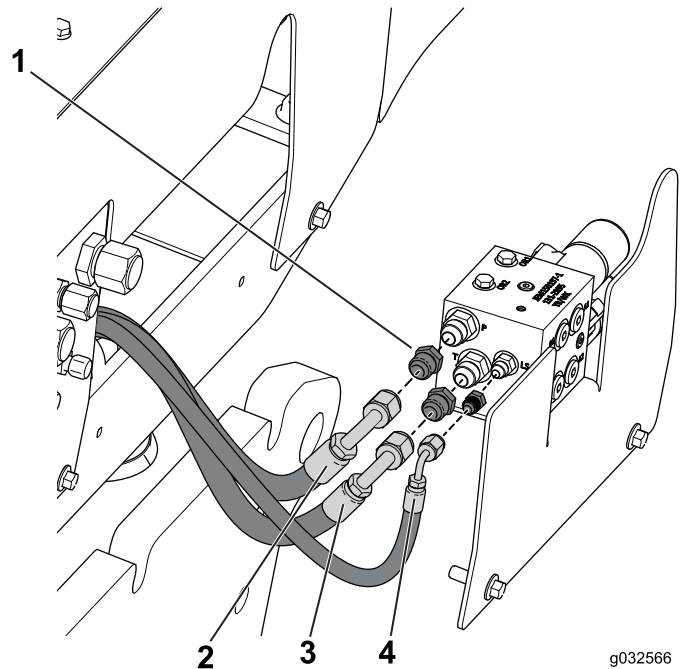


Figure 4

Valve-mount plate shown pulled away from the machine for the purpose of clarity

- | | |
|--|---|
| 1. Remove the cap (3) | 3. Hose (connect to the fitting at the T port) |
| 2. Hose (connect to the fitting at the P port) | 4. Hose (connect to the fitting at the LS port) |

10. Torque each of the hose fittings on the large straight fittings on the hoses to 58 to 72 N·m (43 to 53 ft-lb) and torque the hose fitting on the small straight fitting to 20 to 28 N·m (15 to 21 ft-lb).
11. Locate the connectors on the wire harness for the kit, unbind them, and connect them to the connectors on the solenoids as shown in [Figure 5](#).

Note: Each pair of connectors on the wire harness is labelled as to which solenoid connector they are to connect.

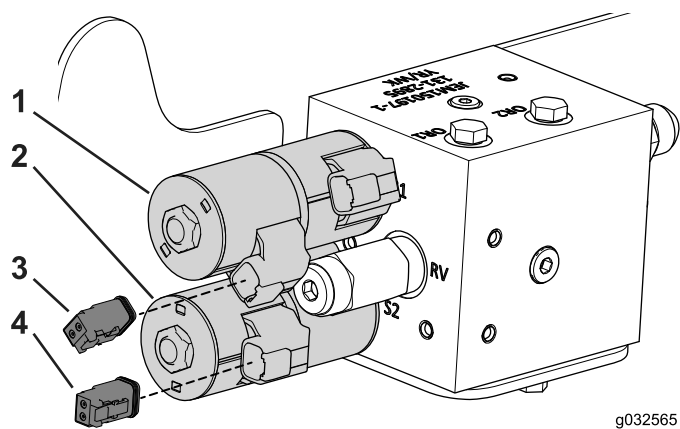


Figure 5

- | | |
|------------------|---|
| 1. Solenoid (S1) | 3. Connector on the wire harness for the connectors on S1 (2) |
| 2. Solenoid (S2) | 4. Connector on the wire harness for the connectors on S2 (2) |

-
12. Start the machine and check for hydraulic-fluid leaks around the solenoid valve and fittings.



Count on it.