



Count on it.

Parts Catalog

30in Stand-On Aerator

Model No. 39518—Serial No. 316000001 and Up



Ordering Replacement Parts

To order replacement parts, please supply the part number, the quantity, and the description of each part desired.

Understanding Reference Numbers

Each identified part in an illustration has a reference number. The reference number for a part also appears in the parts list, along with other information about the part.

This catalog uses two special reference number formats, one to indicate parts in a service assembly and another to indicate the quantity of a given part in an illustration.

Service Assembly Reference Numbers

Parts in service assemblies have reference numbers in the form a:b. The a represents the reference number of the entire service assembly and the b represents a sequential number unique to each part within the service assembly.

For example, a wheel assembly might be identified by reference number 6, the tire by 6:1, the valve by 6:2, and the wheel by 6:3. When you order the assembly identified by reference number 6, you receive all parts identified by reference numbers 6:1, 6:2, and 6:3. However, you may also order any part individually. Reference numbers of this type appear in illustration and in parts lists.

Reference Numbers Indicating Quantity

In an illustration, if a reference number indicates more than one part, the reference number has the form nX y. The n represents the quantity of the part, the X is the multiplication symbol, and the y represents the reference number.

For example, in an illustration, the reference number 2X 37 means that two of the parts identified by reference number 37 are indicated.

List of Abbreviations

AR: as required

ASM: assembly

BBC: blade brake control

BHTF: button head thread forming

CARR: carriage

CCW: counter clockwise

CW: clockwise

DEG: degrees

DPA: Dual Point Adjustment

ECM: electronic control module

EXT: external

FH: flat head

GA: gauge

HD: heavy-duty

HF: hex flange

HH: hex head

HHF: hex head flange

HHFTF: hex head flange thread forming

HJ: hex jam

HLH: hex lag head

HOC: height-of-cut

HP: high pressure

HSBH: hex socket button head

HSFH: hex socket flat head

HSH: hex socket head

HWH: hex washer head

HWHTF: hex washer head thread forming

HYD: hydraulic

LH: left hand

LP: low pressure

LPG: Liquefied Petroleum Gas

NI: nylon insert

NPTF: national pipe thread fine

PFH: phillips flat head

PPH: phillips pan head

PPHTF: phillips pan head thread forming

PRH: phillips round head

PTH: phillips truss head

PTO: power-take-off

RH: right hand

ROPS: roll-over protection system

RRB: rear roller brush

SFH: slotted fillister head

SHH: slotted hex head

SHWH: slotted hex washer head

SPH: slotted pan head

SQH: square head

SRH: slotted round head

STD: standard

TAP: self tapping

TTH: torx truss head

Contents

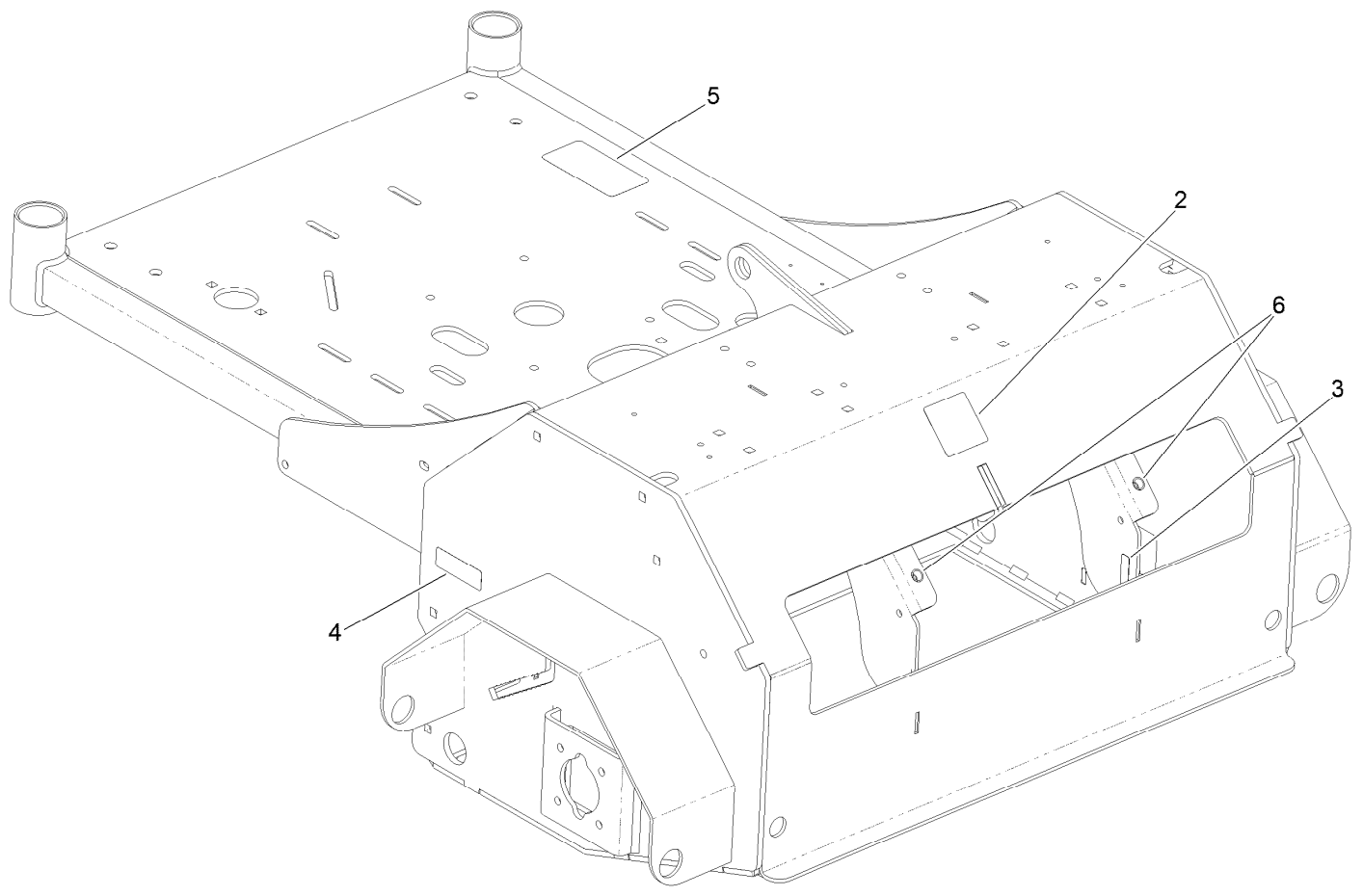
Main Frame Assembly	4
Main Frame Decal Assembly No. 116-8138	6
Caster Wheel and Fork Assembly	8
Platform Assembly No. 116-9135	10
Tower Assembly	12
Ground Drive Assembly	14
Idler Arm Assembly No. 116-9307	16
RH Transaxle Assembly No. 116-9712	18
LH Transaxle Assembly No. 116-9713	20
Axle and Bearing Assembly No. 116-9545	22
Tine Assembly	24
RH Tine Wheel Assembly No. 116-6738	26
LH Tine Wheel Assembly No. 116-6739	28
Fuel Assembly	30
Motion Control Assembly	32
Electrical Assembly	34
Auxiliary Hydraulic Assembly	36
Manifold W/Check and Relief Valve Assembly No. 116-9549	38
Hydraulic Cylinder Assembly No. 116-6969	40
Hydraulic Pump Assembly No. 116-9129	42
Engine Assembly	44

Main Frame Assembly (continued)

<i>Ref.</i>	<i>Part Number</i>	<i>Qty.</i>	<i>Description</i>	<i>Ref.</i>	<i>Part Number</i>	<i>Qty.</i>	<i>Description</i>
1	116-8138	1	Main Frame ASM	14	3234-40	4	Screw-HF
2		2	Front Caster ASM ●	18	104-8301	6	Nut-Flange, NI
3	116-6536-01	1	Weight	19	3256-24	4	Washer-Flat
4	116-9135	1	Platform ASM W/Rocker	21	126-6752	6	Screw-Thumb
5	116-7300	1	Access Cover ASM	22	614672	2	Bolt-Shoulder
5:2	121-6163	1	Decal-Tine Ground Operation (Ce)	23	1-811010	2	Plug
6	116-8258	1	Muffler Guard ASM	24	3256-6	2	Washer-Flat
6:2	115-2047	2	Decal-Surface, Hot	28	107-1865	2	R-Clamp
8	99-5107	4	Nut-Lock	29	32144-10	2	Screw-HWH
9	126-0015	2	Grommet	30	104-7050	1	Tube-Manual
10	116-6612-01	1	Guard-Chain, RH	31	104-7048	1	Cap-Housing
11	116-6611-01	1	Guard-Chain, LH	33	117-2718	1	Decal-Arrester, Spark
				34	3290-461	2	Washer-Spring

● Not serviced separately

Main Frame Decal Assembly No. 116-8138

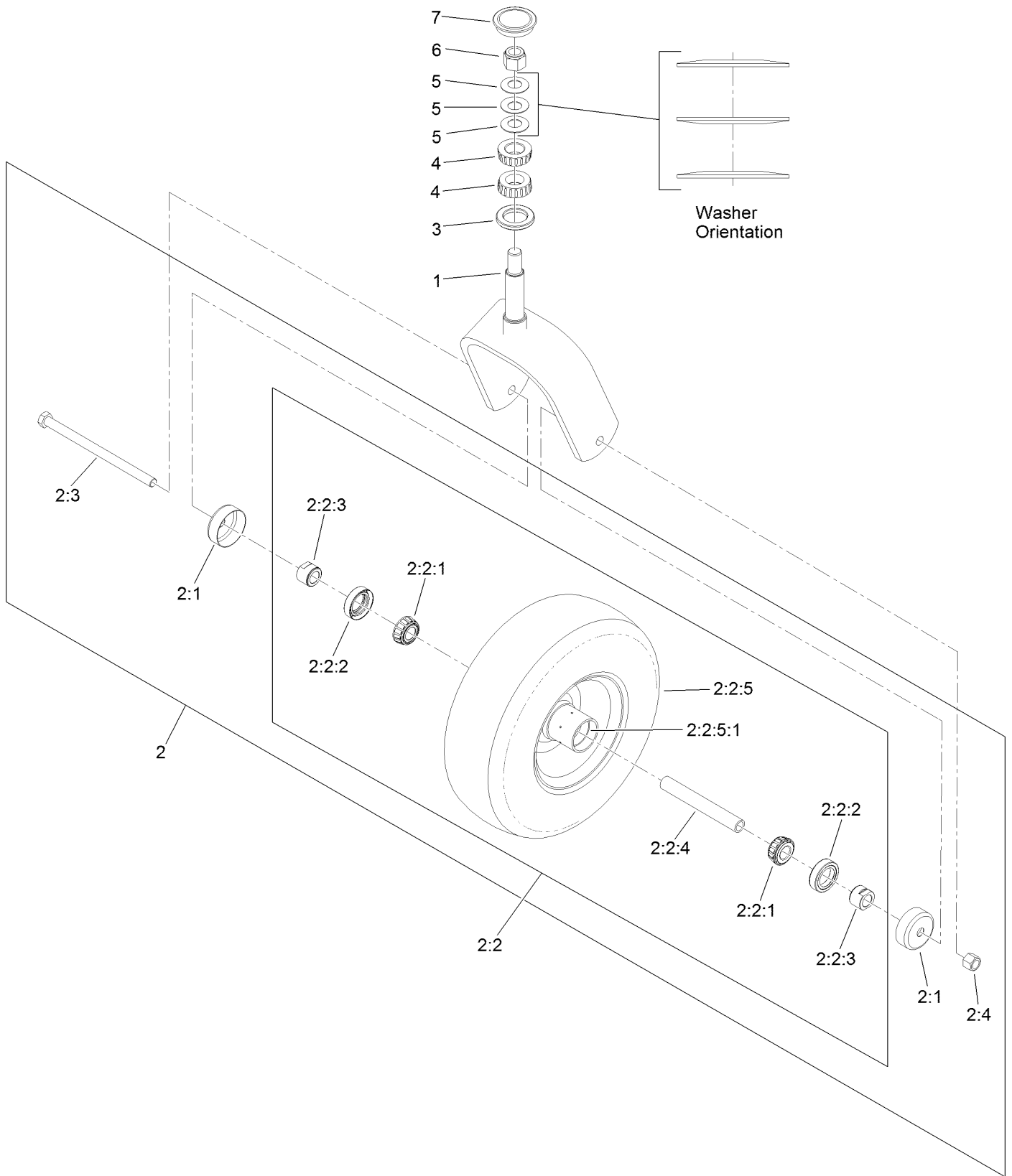


Main Frame Decal Assembly No. 116-8138 (continued)

<i>Ref.</i>	<i>Part Number</i>	<i>Qty.</i>	<i>Description</i>
2	121-6150	1	Decal-Warning
3	120-9570	1	Decal-Warning
4	121-6161	2	Decal-Danger

<i>Ref.</i>	<i>Part Number</i>	<i>Qty.</i>	<i>Description</i>
5	116-9391	1	Decal-Belt Routing
6	32148-10	2	Insert-Nut

Caster Wheel and Fork Assembly



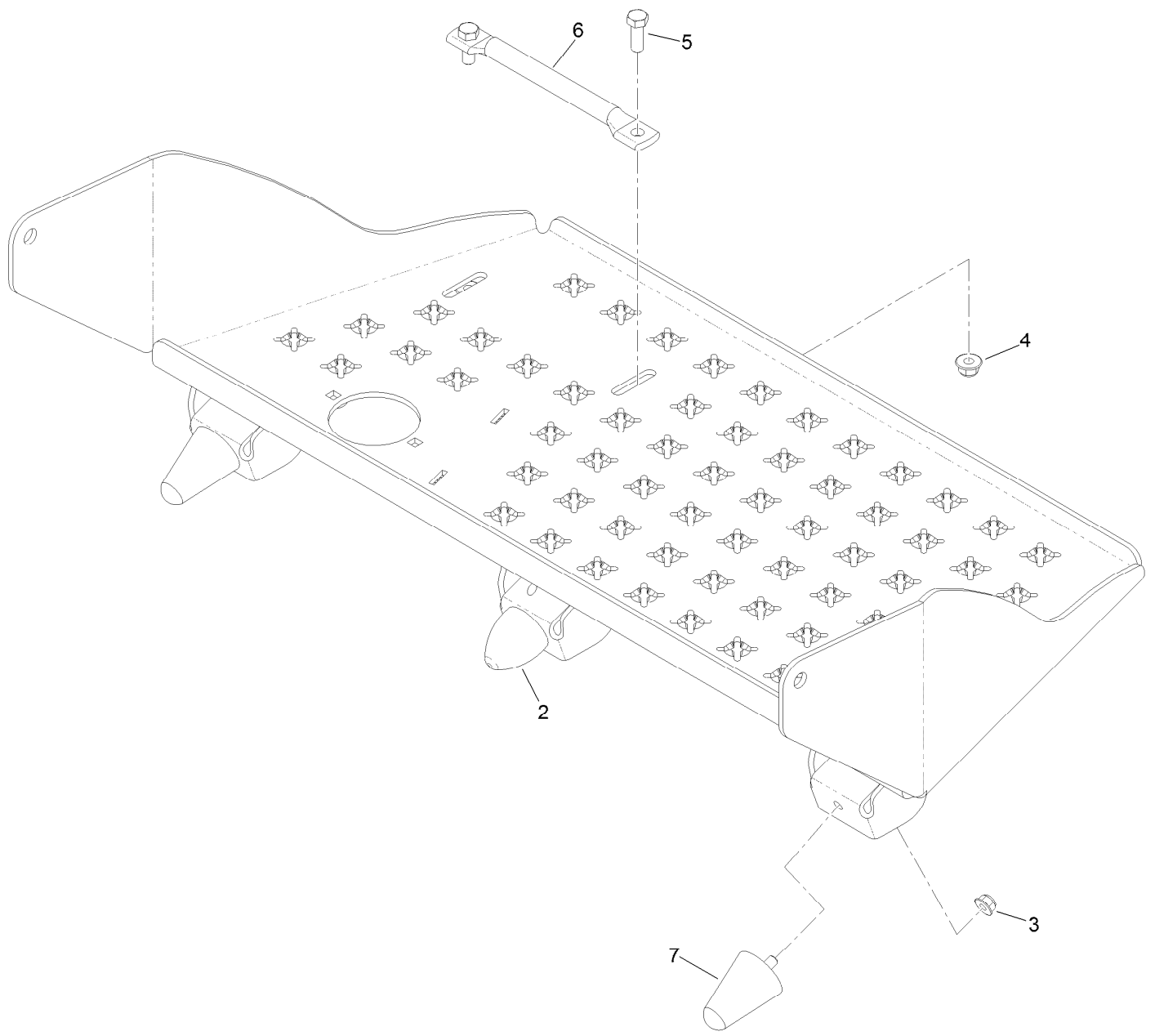
Caster Wheel and Fork Assembly (continued)

<i>Ref.</i>	<i>Part Number</i>	<i>Qty.</i>	<i>Description</i>	<i>Ref.</i>	<i>Part Number</i>	<i>Qty.</i>	<i>Description</i>
1	116-6704-01	1	Caster	2:2:5:1	1-633584	1	Bearing-Cup
2	127-9531	1	Wheel And Axle ASM	2:3	325-42	1	Screw-HH
2:1	103-2768	2	Guard-Seal	2:4	3296-23	1	Nut-Lock, NI
2:2		1	Wheel And Bearing ASM ●	3	1-543511	1	Seal-Grease
2:2:1	1-633585	2	Bearing-Cone, Taper	4	1-543509	2	Bearing-Roller, Tapered
2:2:2	103-0063	2	Seal-Caster	5	1-633508	3	Washer-Bellville
2:2:3	103-3051	2	Spacer-Nut ■	6	3296-51	1	Nut-Lock, NI
2:2:4	103-3155	1	Axle-Caster	7	103-4882	1	Cap-Grease
2:2:5		1	Wheel And Tire ASM ●				

● Not serviced separately

■ Use Pro-Lock, Nut Type (P/N 1-840022, .5ml tube) on threads.

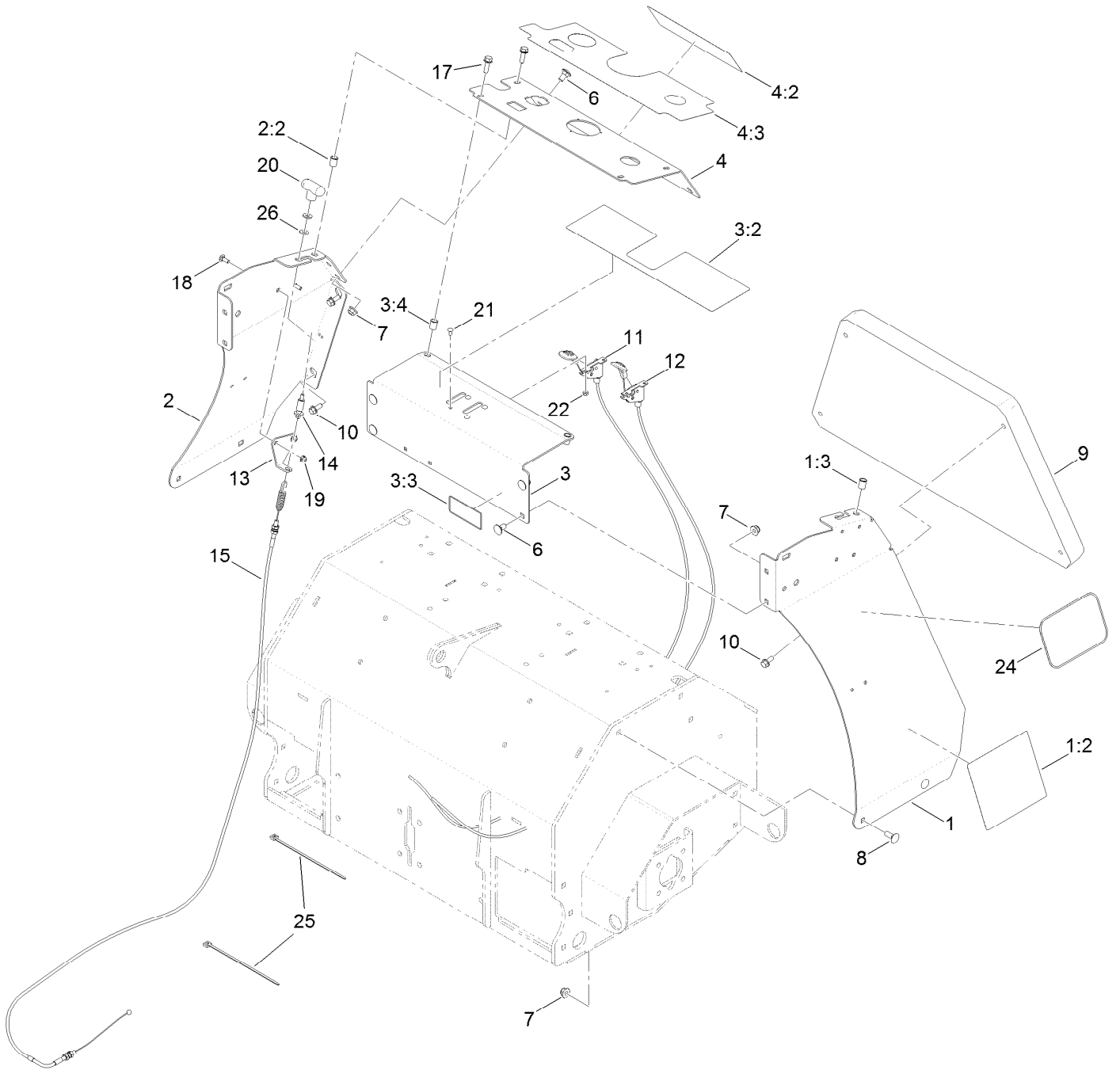
Platform Assembly No. 116-9135



Platform Assembly No. 116-9135 (continued)

<i>Ref.</i>	<i>Part Number</i>	<i>Qty.</i>	<i>Description</i>	<i>Ref.</i>	<i>Part Number</i>	<i>Qty.</i>	<i>Description</i>
2	114-1926	1	Bumper-Rubber	5	323-6	2	Screw-HH
3	104-8300	3	Nut-Flange, NI	6	116-8950-01	1	Rocker-Pedal, Foot
4	104-8301	2	Nut-Flange, NI	7	114-1925	2	Bumper-Rubber

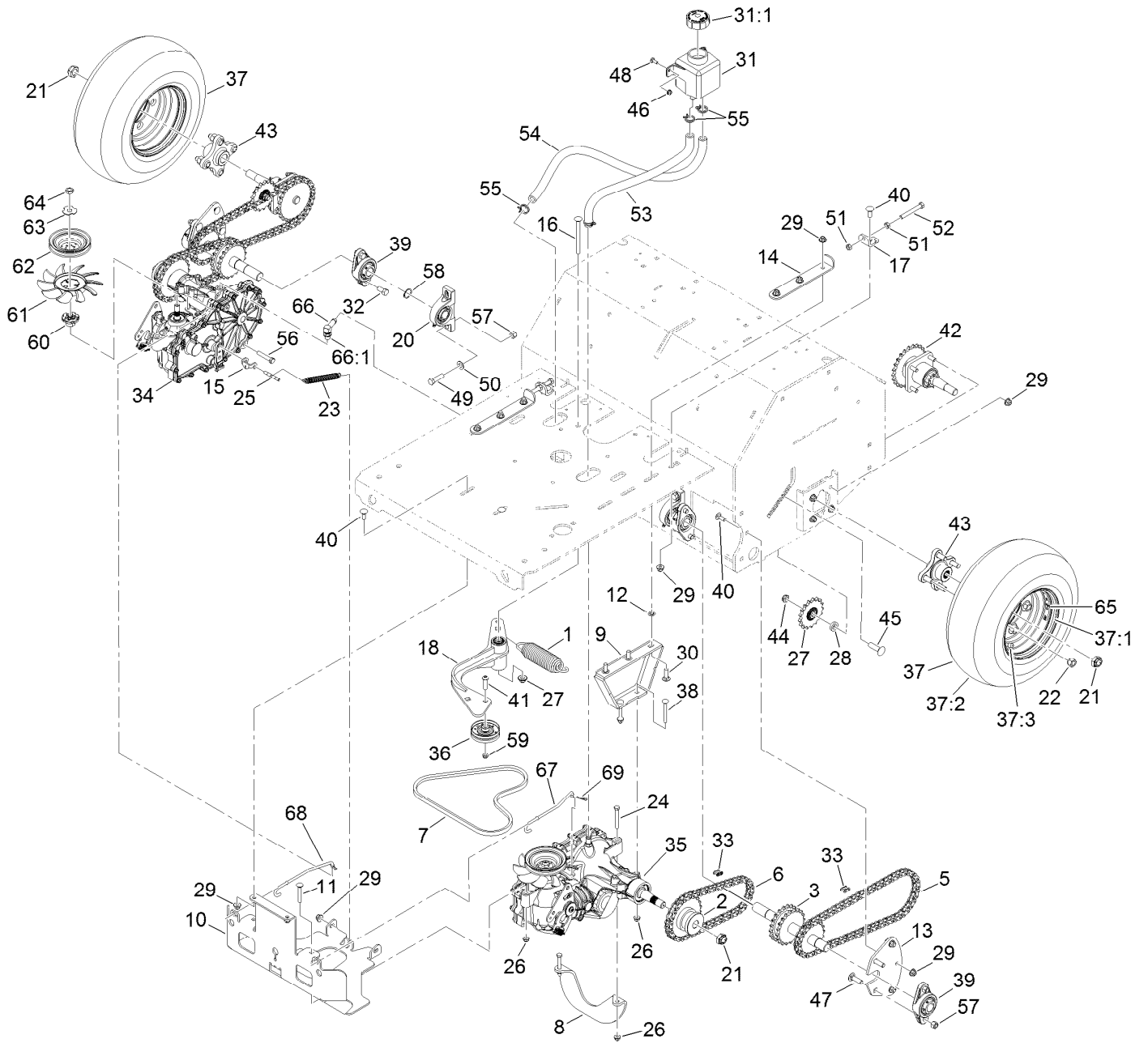
Tower Assembly



Tower Assembly (continued)

<i>Ref.</i>	<i>Part Number</i>	<i>Qty.</i>	<i>Description</i>	<i>Ref.</i>	<i>Part Number</i>	<i>Qty.</i>	<i>Description</i>
1	116-9387	1	LH Side Panel ASM	9	116-6959	1	Cushion-Black
1:2	116-9392	1	Decal-Service Aid Ce	10	3234-5	4	Screw-HHF
1:3	32148-7	1	Nut-Insert	11	109-9147	1	Control-Choke
2	116-7657	1	RH Side Panel ASM	12	109-3958	1	Control-Throttle
2:2	32148-7	1	Nut-Insert	13	116-6630	1	Bracket-Cable, Brake
3	126-3136	1	Front Console Plate ASM	14	116-7504	1	Link-Cable, Brake
3:2	121-6164	1	Decal-Warning, Control Panel	15	116-7503	1	Cable-Brake
3:3	121-6162	1	Decal-Warning, Tines	17	3234-29	4	Screw-HHF
3:4	32148-7	2	Nut-Insert	18	3229-1	2	Bolt-CARR
4	126-4529	1	Console ASM	19	104-7201	2	Nut-Flange, NI
4:2	121-6166	1	Decal-Danger	20	116-7607	1	Knob-Tee
4:3	126-4528	1	Decal-Danger, Control Panel	21	1-807513	4	Bolt-CARR
6	3231-1	6	Screw-CARR	22	3296-2	4	Nut-Lock, NI
7	104-8301	10	Nut-Flange, NI	24	62-5550	2	Decal
8	3231-2	4	Bolt-CARR	25	1-303335	2	Tie-Plastic
				26	3256-2	2	Washer-Flat

Ground Drive Assembly

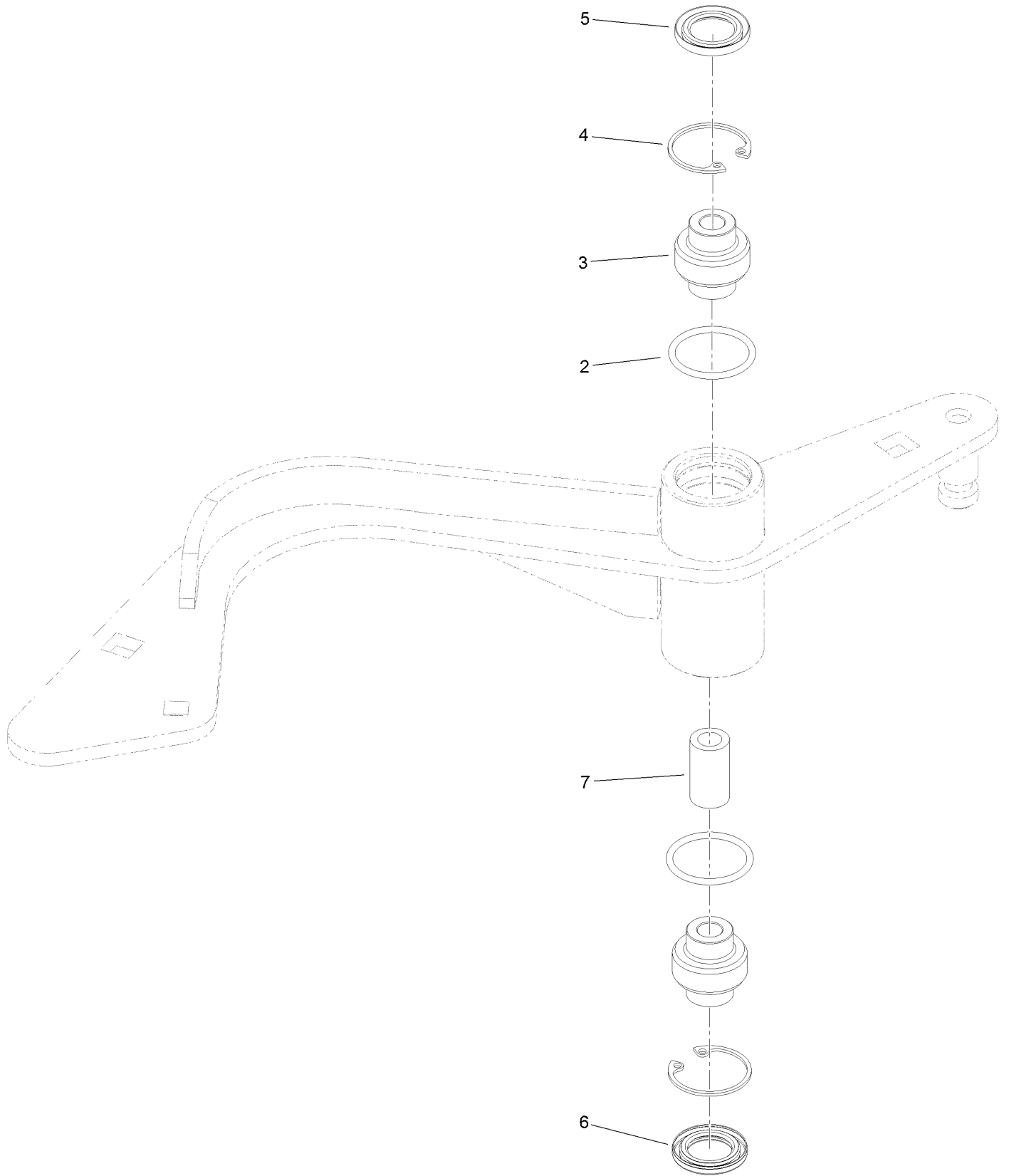


Ground Drive Assembly (continued)

<i>Ref.</i>	<i>Part Number</i>	<i>Qty.</i>	<i>Description</i>	<i>Ref.</i>	<i>Part Number</i>	<i>Qty.</i>	<i>Description</i>
1	116-6317	1	Spring-Extension	37:1	126-4266	1	Rim-Gray
2	116-9305	2	Hub-Drive, Chain	37:2	116-6978	1	Tire
3	116-9684	2	Jackshaft	37:3	232-27	1	Stem-Valve
5	116-6895	2	Chain-Roller, #50, 65 Links	38	3230-9	4	Screw-CARR
6	116-6896	2	Chain-Roller #50, 47 Pitches	39	116-6777	4	Bearing-Flange, 2 Bolt
7	116-8874	1	Belt-4L Section	40	3231-2	10	Bolt-CARR
8	116-9127-03	1	Brace-Angle	41	116-9927	1	Screw-HSBH
9	116-9710-03	2	Mount-Transmission	42	116-9545	2	Axle And Bearing ASM
10	126-5495-03	1	Guard-Transmission	43	116-3872	2	Hub-Offset
11	3230-7	2	Bolt-CARR	44	3296-45	2	Nut-Lock, NI
12	107-3154	6	Nut-Push	45	3233-14	2	Screw-CARR
13	116-6596-01	2	Plate-Jackshaft	46	104-7201	2	Nut-Flange, NI
14	116-6619	2	Plate-Adjustment, Transmission	47	3232-3	4	Bolt-CARR
				48	3229-1	2	Bolt-CARR
15	116-7597	1	Yoke-Brake, Park	49	324-6	4	Screw-HH
16	9000779	1	Bolt-CARR	50	3256-25	4	Washer-Flat
17	116-6723	2	Bracket-Hydro, Adjust	51	3217-7	4	Nut-Hex
18	116-9307	1	Idler Arm ASM	52	99-8664	2	Screw-HH
20	116-6756	2	Bearing-Pillow Block	53	116-6775	1	Hose-Hydraulic
21	116-2839	4	Nut-Lock	54	116-6776	1	Hose-Hydraulic
22	242-50	8	Nut-Lug	55	109-3322	4	Clamp-Hose
23	76-4660	1	Spring-Door	56	323-10	2	Screw-HH
24	322-12	2	Screw-HH	57	3296-48	8	Nut-Lock, NI
25	116-7596	1	Pin-Brake, Park	58	32151-29	2	Ring-Retaining
26	104-8300	8	Nut-Flange, NI	59	3296-59	1	Nut-Lock, NI
27	116-6719	2	Sprocket-Idler, 17T	60	116-9705	2	Hub-Pulley
28	104-8417	2	Washer	61	116-9706	2	Fan
29	104-8301	27	Nut-Flange, NI	62	116-9707	2	Pulley
30	3231-25	6	Bolt-CARR	63	116-9708	2	Washer-Slotted
31	109-2250	1	Vent-Tank, HYD	64	116-9714	2	Nut-HJ ●
31:1	109-3320	1	Cap-Reservoir, HYD	65	126-2054	2	Decal-Hub, Wheel
32	116-7109	4	Screw-HH	66	109-6449	1	Fitting-Elbow, 90
33	116-6897	4	Link-Connecting, #50	66:1	237-42	1	O-Ring
34	116-9712	1	RH Transaxle ASM (No Fan)	67	126-5442	1	Linkage-Bypass, LH
35	116-9713	1	LH Transaxle ASM (No Fan)	68	126-5443	1	Linkage-Bypass, RH
36	116-9715	1	Pulley-Idler	69	1-806003	2	Pin-Cotter
37	126-4267	2	Wheel And Tire ASM				

● Use Pro-Lock, Nut Type (P/N 1-840022, .5ml tube) on threads.

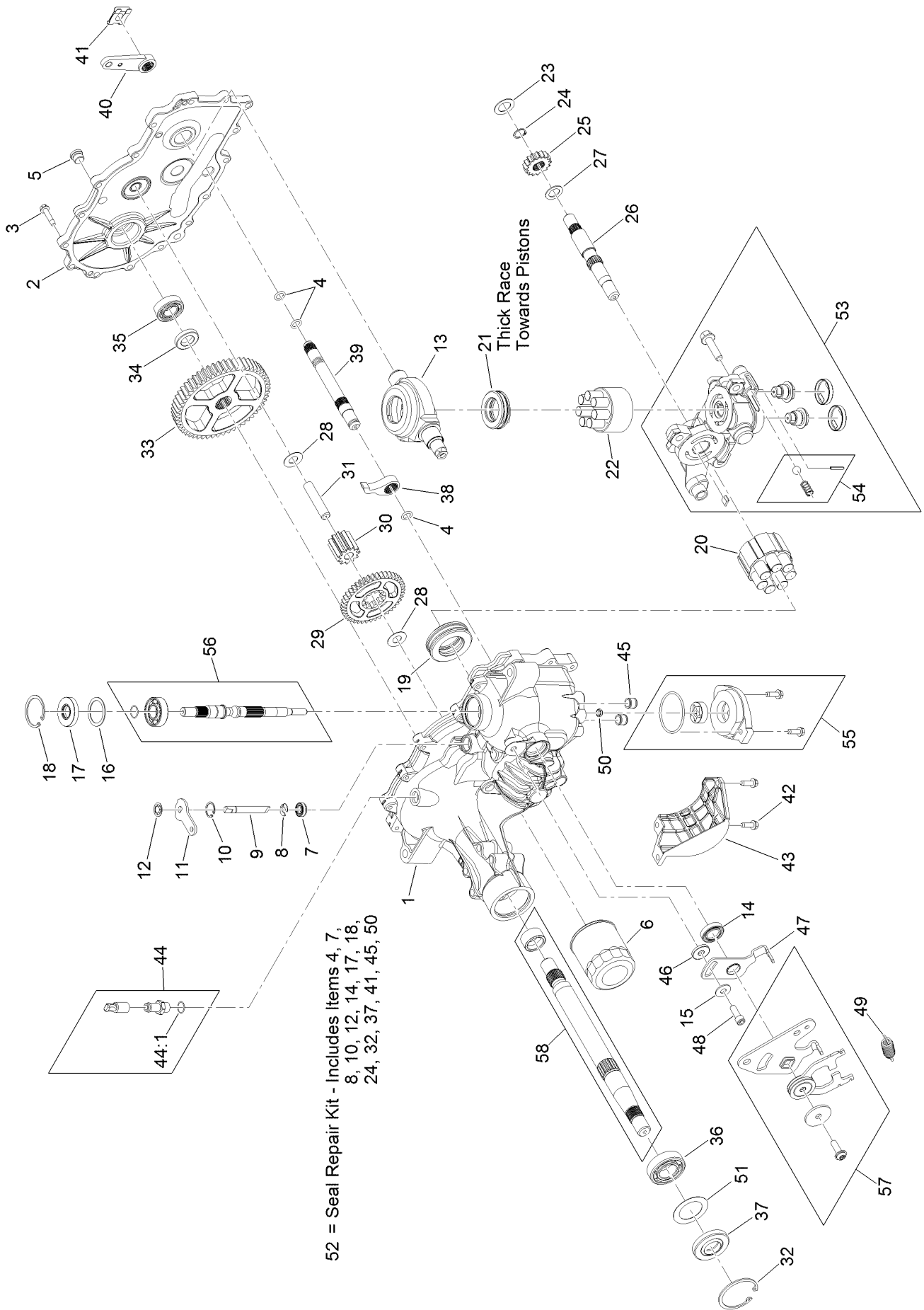
Idler Arm Assembly No. 116-9307



Idler Arm Assembly No. 116-9307 (continued)

<i>Ref.</i>	<i>Part Number</i>	<i>Qty.</i>	<i>Description</i>	<i>Ref.</i>	<i>Part Number</i>	<i>Qty.</i>	<i>Description</i>
2	106-7159	2	O-Ring	5	103-3506	1	Seal-Lip, Single
3	103-3504	2	Bearing-Spherical	6	103-3505	1	Seal-Double Lip
4	32120-10	2	Ring-Snap	7	1-603401	1	Spacer-Fender

RH Transaxle Assembly No. 116-9712



52 = Seal Repair Kit - Includes Items 4, 7,
8, 10, 12, 14, 17, 18,
24, 32, 37, 41, 45, 50

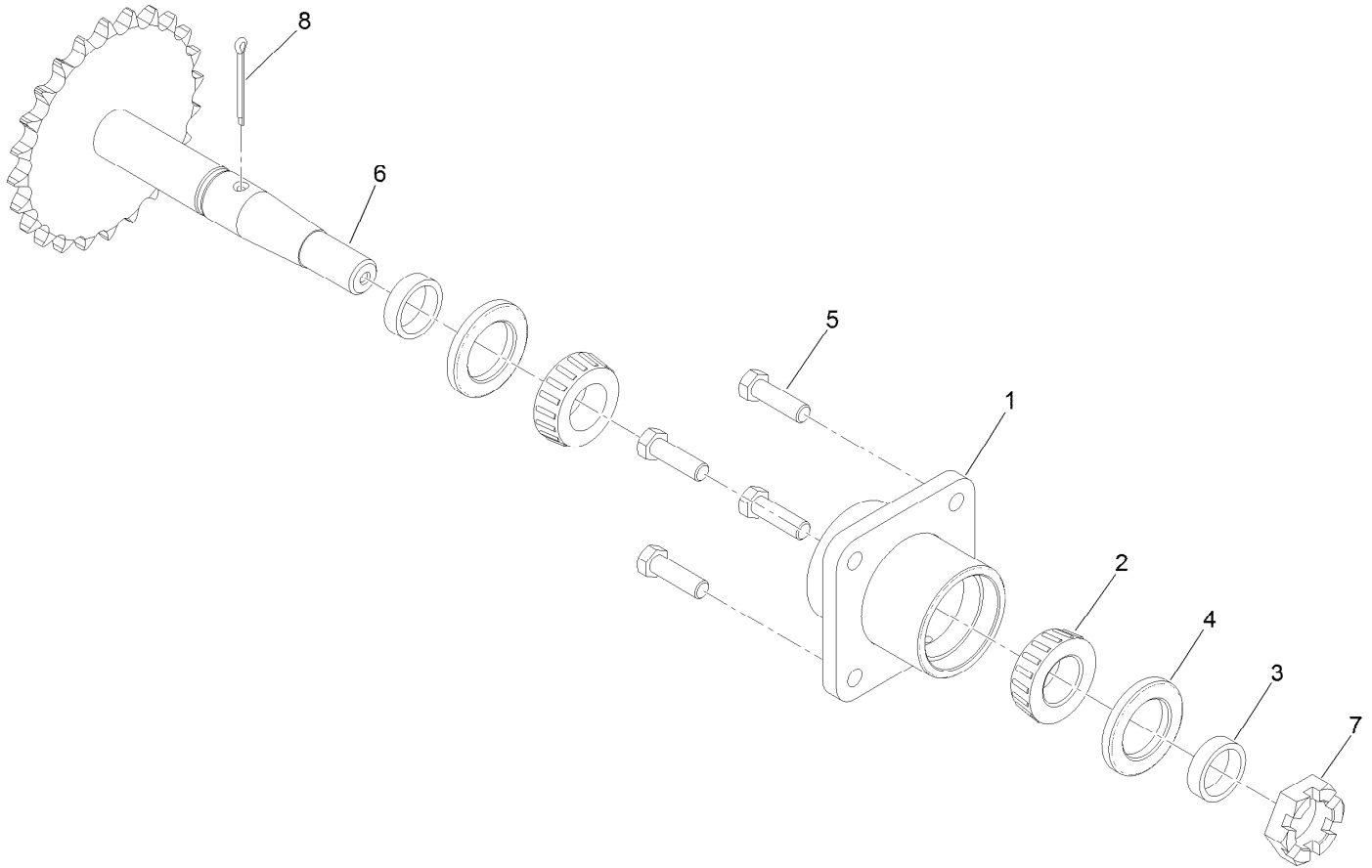
RH Transaxle Assembly No. 116-9712 (continued)

<i>Ref.</i>	<i>Part Number</i>	<i>Qty.</i>	<i>Description</i>	<i>Ref.</i>	<i>Part Number</i>	<i>Qty.</i>	<i>Description</i>
1	114-1676	1	Main Housing Kit	31	104-5329	1	Pin-Jackshaft
2	117-5358	1	Housing Side Kit	32	104-2169	1	Ring-Retaining
3	117-5359	16	Screw-HHF	33	114-1694	1	Gear-54T
4	114-1678	4	O-Ring	34	120-7975	1	Spacer
5	104-2189	1	Plug-Thread, Straight	35	126-0789	1	Bearing-Ball
6	109-3321	1	Element-Oil Filter, HYD	36	120-7976	1	Bearing-Ball
7	106-8676	1	Seal-Lip	37	104-2144	1	Seal
8	106-8677	1	Ring-Retaining, EXT	38	114-1697	1	Pawl-Brake
9	114-1685	1	Rod-Bypass	39	114-1698	1	Shaft-Brake, Inboard
10	106-8679	1	Ring-Retaining, Int	40	125-0021	1	Handle-Brake
11	106-8680	1	Arm-Bypass	41	131-0906	1	Ring-Retaining, EXT
12	106-8681	1	Ring-Retaining, EXT	42	104-2120	3	Screw
13	104-5304	1	Swashplate-Trunnion	43	120-7981	1	Guard-Filter, RH
14	104-5313	1	Seal-Lip	44	109-3278	1	Adapter-Straight
15	114-8491	1	Washer	44:1	237-42	1	O-Ring
16	104-5308	1	Spacer	45	126-3251	2	Tube-Charge
17	104-5310	1	Seal-Lip	46	114-8458	1	Spacer
18	104-5309	1	Ring-Retaining	47	114-8459	1	Arm-Neutral, Right
19	109-2865	1	Bearing-Thrust	48	106-8682	1	Screw-Sh
20	114-1689	1	Motor Cylinder Block Kit	49	115-8307	1	Spring-Extension
21	94-6922	1	Bearing-Thrust	50	131-0908	1	Seal-Gerotor
22	110-8561	1	Pump Block ASM	51	121-5745	1	Spacer
23	104-5339	1	Washer-Flat	52	109-3537	1	Seal Kit
24	104-5340	1	Ring-Retaining	53	120-7982	1	RH Center Section Charge Kit
25	126-0788	1	Gear-16T	54	114-8464	1	Charge Relief Kit
26	114-1691	1	Shaft-Motor	55	114-8465	1	Charge Kit
27	104-5360	1	Washer	56	117-5361	1	Input Shaft Kit
28	94-1933	2	Washer	57	126-2291	1	Control Arm Kit
29	125-0000	1	Gear-43T	58	114-8470	1	Axle Shaft Kit
30	120-7974	1	Gear-11T				

LH Transaxle Assembly No. 116-9713 (continued)

<i>Ref.</i>	<i>Part Number</i>	<i>Qty.</i>	<i>Description</i>	<i>Ref.</i>	<i>Part Number</i>	<i>Qty.</i>	<i>Description</i>
1	114-8471	1	Main Housing Kit	31	104-5329	1	Pin-Jackshaft
2	114-8472	1	Side Cover Kit	32	104-2169	1	Ring-Retaining
3	117-5359	16	Screw-HHF	33	114-1694	1	Gear-54T
4	114-1678	4	O-Ring	34	120-7975	1	Spacer
5	104-2189	1	Plug-Thread, Straight	35	126-0789	1	Bearing-Ball
6	109-3321	1	Element-Oil Filter, HYD	36	120-7976	1	Bearing-Ball
7	106-8676	1	Seal-Lip	37	104-2144	1	Seal
8	106-8677	1	Ring-Retaining, EXT	38	114-1697	1	Pawl-Brake
9	114-1685	1	Rod-Bypass	39	114-1698	1	Shaft-Brake, Inboard
10	106-8679	1	Ring-Retaining, Int	40	125-0021	1	Handle-Brake
11	106-8680	1	Arm-Bypass	41	131-0906	1	Ring-Retaining, EXT
12	106-8681	1	Ring-Retaining, EXT	42	104-2120	3	Screw
13	104-5304	1	Swashplate-Trunnion	43	120-7981	1	Guard-Filter, RH
14	104-5313	1	Seal-Lip	44	109-3278	1	Adapter-Straight
15	114-8491	1	Washer	44:1	237-42	1	O-Ring
16	104-5308	1	Spacer	45	114-8455	2	Tube-Connecting
17	104-5310	1	Seal-Lip	46	114-8458	1	Spacer
18	104-5309	1	Ring-Retaining	47	114-8474	1	Arm-Neutral, Left
19	109-2865	1	Bearing-Thrust	48	106-8682	1	Screw-Sh
20	114-1689	1	Motor Cylinder Block Kit	49	115-8307	1	Spring-Extension
21	94-6922	1	Bearing-Thrust	50	131-0908	1	Seal-Gerotor
22	110-8561	1	Pump Block ASM	51	121-5745	1	Spacer
23	104-5339	1	Washer-Flat	52	109-3537	1	Seal Kit
24	104-5340	1	Ring-Retaining	53	120-7980	1	LH Center Section Charge Kit
25	126-0788	1	Gear-16T	54	114-8464	1	Charge Relief Kit
26	114-1691	1	Shaft-Motor	55	114-8465	1	Charge Kit
27	104-5360	1	Washer	56	117-5361	1	Input Shaft Kit
28	94-1933	2	Washer	57	126-0790	1	Control Arm Kit
29	125-0000	1	Gear-43T	58	114-8470	1	Axle Shaft Kit
30	120-7974	1	Gear-11T				

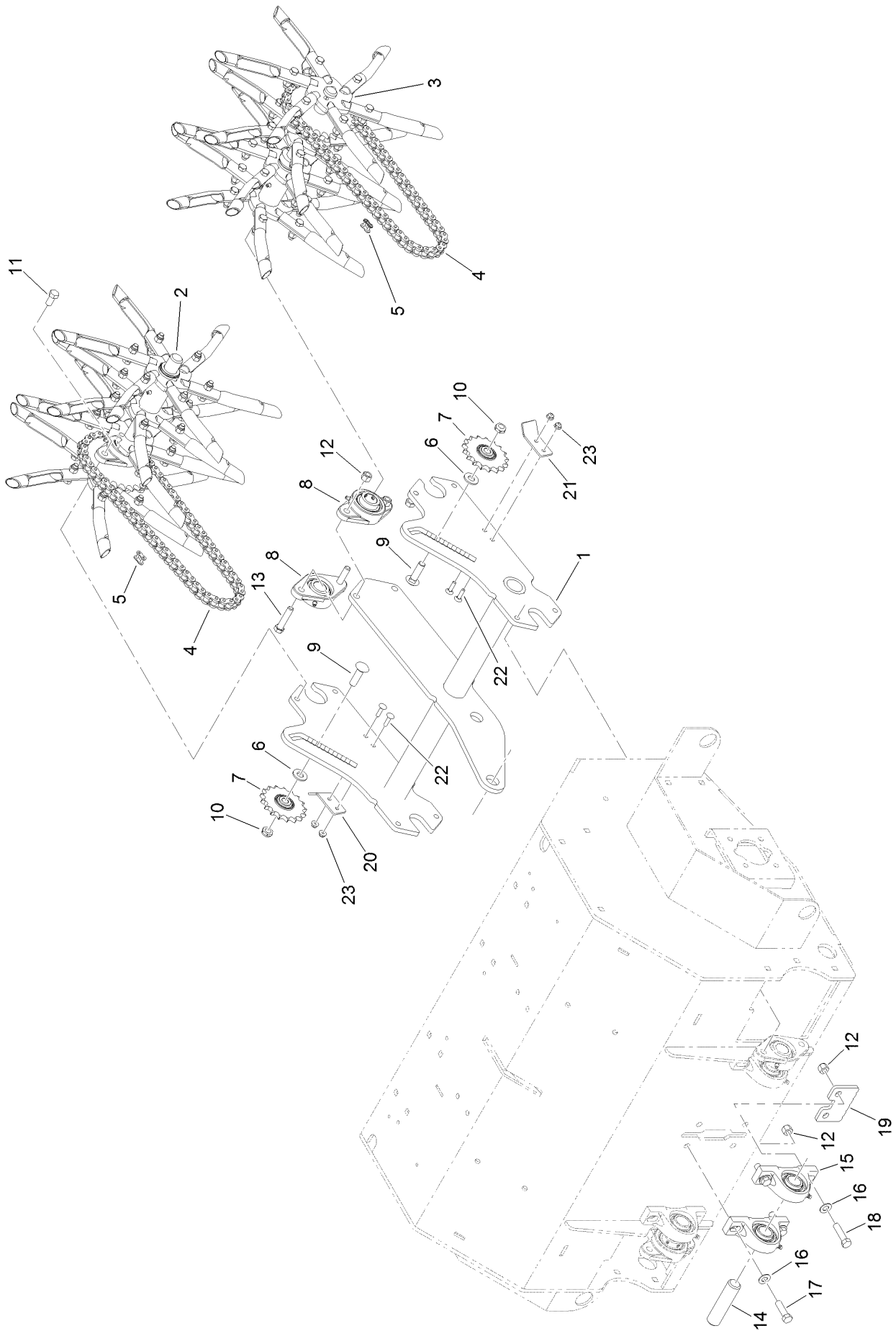
Axle and Bearing Assembly No. 116-9545



Axle and Bearing Assembly No. 116-9545 (continued)

<i>Ref.</i>	<i>Part Number</i>	<i>Qty.</i>	<i>Description</i>	<i>Ref.</i>	<i>Part Number</i>	<i>Qty.</i>	<i>Description</i>
1	116-6746-01	1	Mount-Bearing, Wheel	5	323-7	4	Screw-HH
2	1-543509	2	Bearing-Roller, Tapered	6	126-0459	1	Axle
3	116-6758	2	Spacer	7	99-3139	1	Nut
4	1-543511	2	Seal-Grease	8	1-806800	1	Pin-Cotter

Tine Assembly

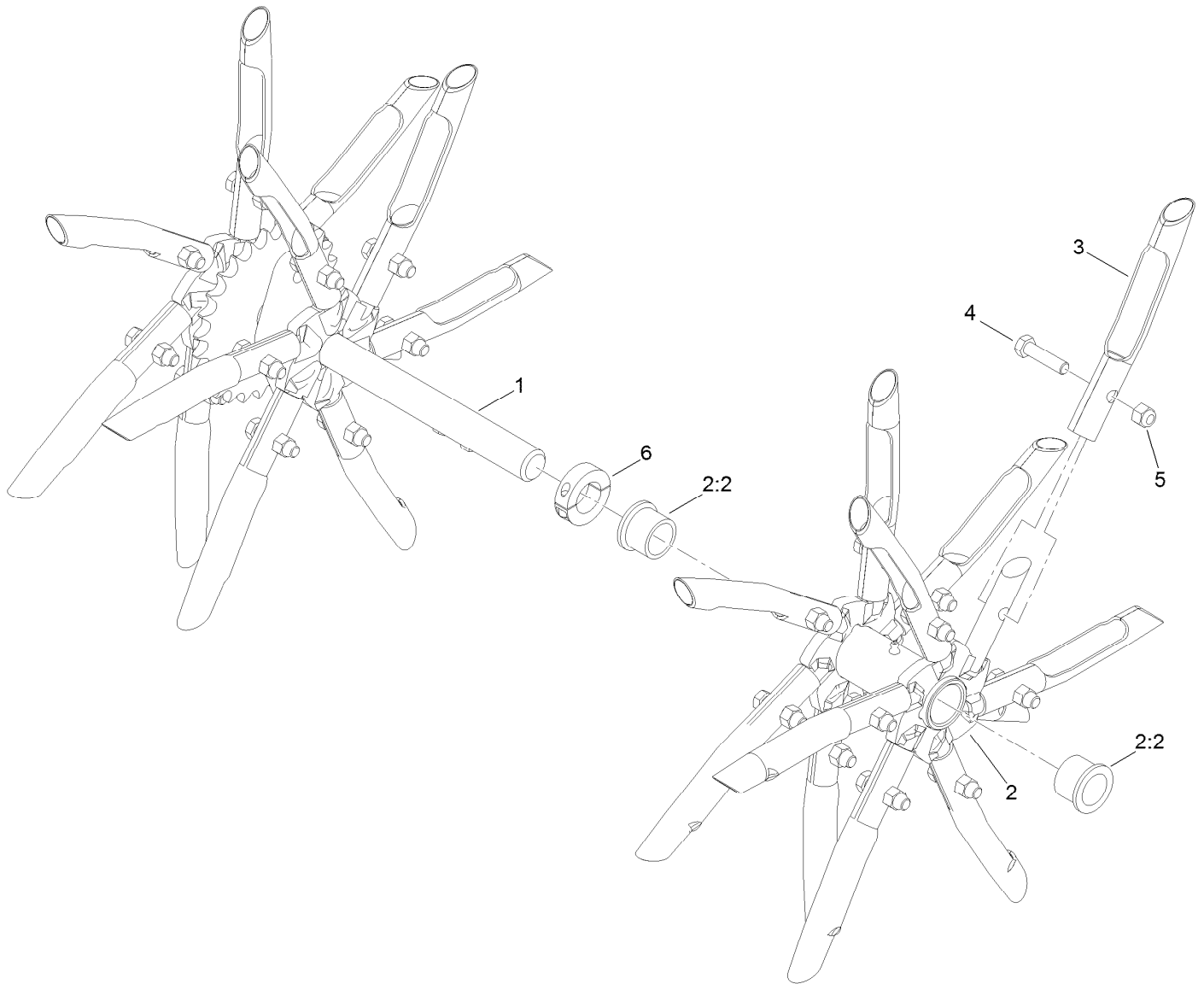


Tine Assembly (continued)

<i>Ref.</i>	<i>Part Number</i>	<i>Qty.</i>	<i>Description</i>	<i>Ref.</i>	<i>Part Number</i>	<i>Qty.</i>	<i>Description</i>
1	126-4817-03	1	Arm-Trail	13	324-8	2	Screw-HH
2	116-6738	1	RH Tine Wheel ASM	14	116-6629	1	Shaft
3	116-6739	1	LH Tine Wheel ASM	15	116-6756	2	Bearing-Pillow Block ●
4	116-6895	2	Chain-Roller, #50, 65 Links	16	3256-25	4	Washer-Flat
5	116-6897	2	Link-Connecting, #50	17	324-6	2	Screw-HH
6	87-7270	2	Washer-Thrust	18	324-7	2	Screw-HH
7	116-6719	2	Sprocket-Idler, 17T	19	116-7327-01	1	Plate-Downstop
8	116-6777	2	Bearing-Flange, 2 Bolt	20	126-4192-03	1	Guard-Chain, RH
9	3233-14	2	Screw-CARR	21	126-4193-03	1	Guard-Chain, LH
10	3296-45	2	Nut-Lock, NI	22	3229-30	4	Screw-CARR
11	116-7109	4	Screw-HH ●	23	104-7201	4	Nut-Flange, NI
12	3296-48	6	Nut-Lock, NI				

● Use Pro-Lock, Nut Type (P/N 1-840022, .5ml tube) on threads.

RH Tine Wheel Assembly No. 116-6738

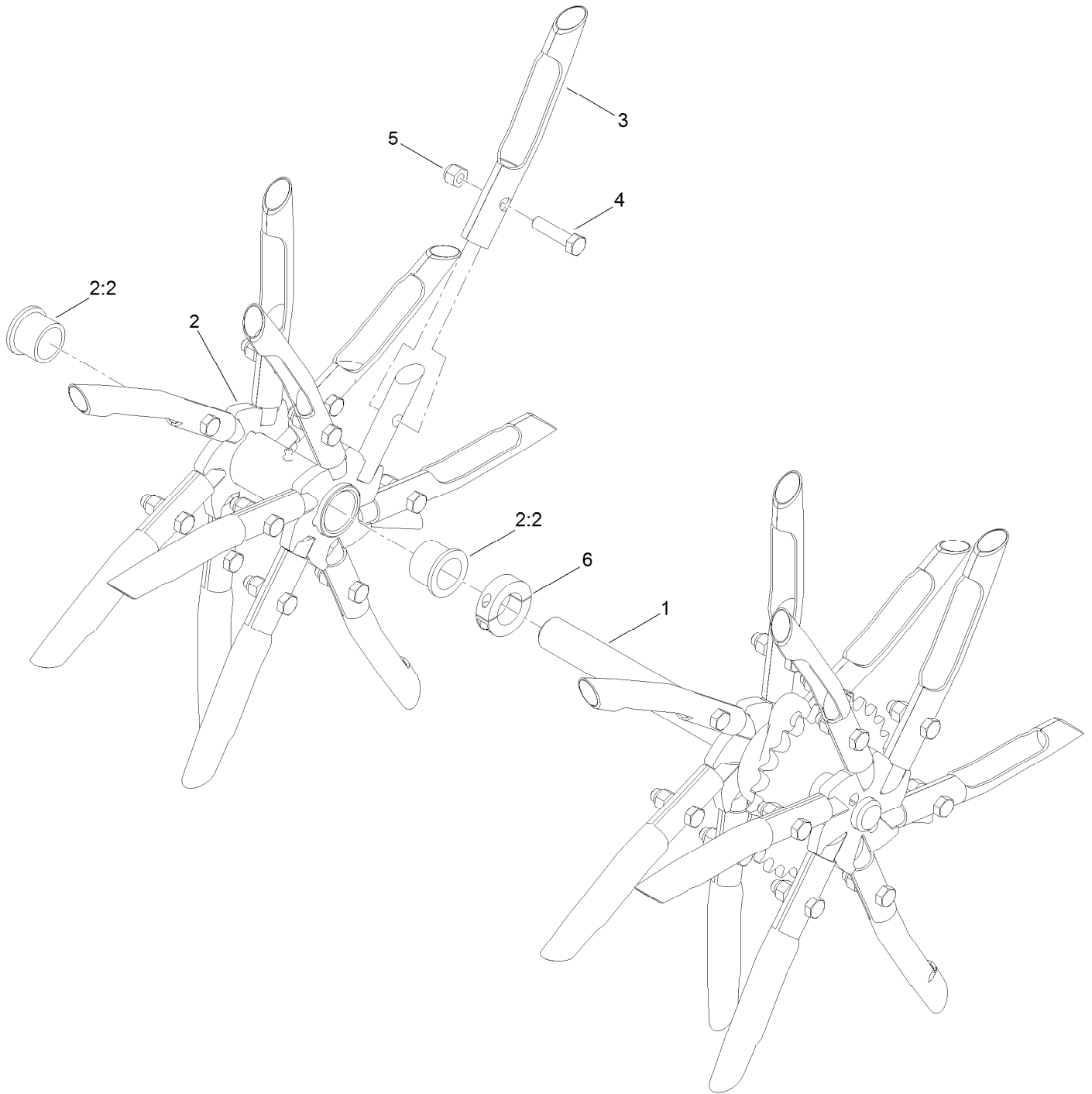


RH Tine Wheel Assembly No. 116-6738 (continued)

<i>Ref.</i>	<i>Part Number</i>	<i>Qty.</i>	<i>Description</i>	<i>Ref.</i>	<i>Part Number</i>	<i>Qty.</i>	<i>Description</i>
1	116-6727	1	Shaft-Tine, RH	4	323-8	24	Screw-HH
2	116-6731	1	Float Tine Shaft ASM	5	3296-39	24	Nut-Lock, NI
2:2	94-8949	2	Bushing-Flange	6	116-7271	1	Collar-Locking ●
3	126-2143	24	Tine-Coring (3/4 Inch)				

● Use Loctite® 243 on threads.

LH Tine Wheel Assembly No. 116-6739

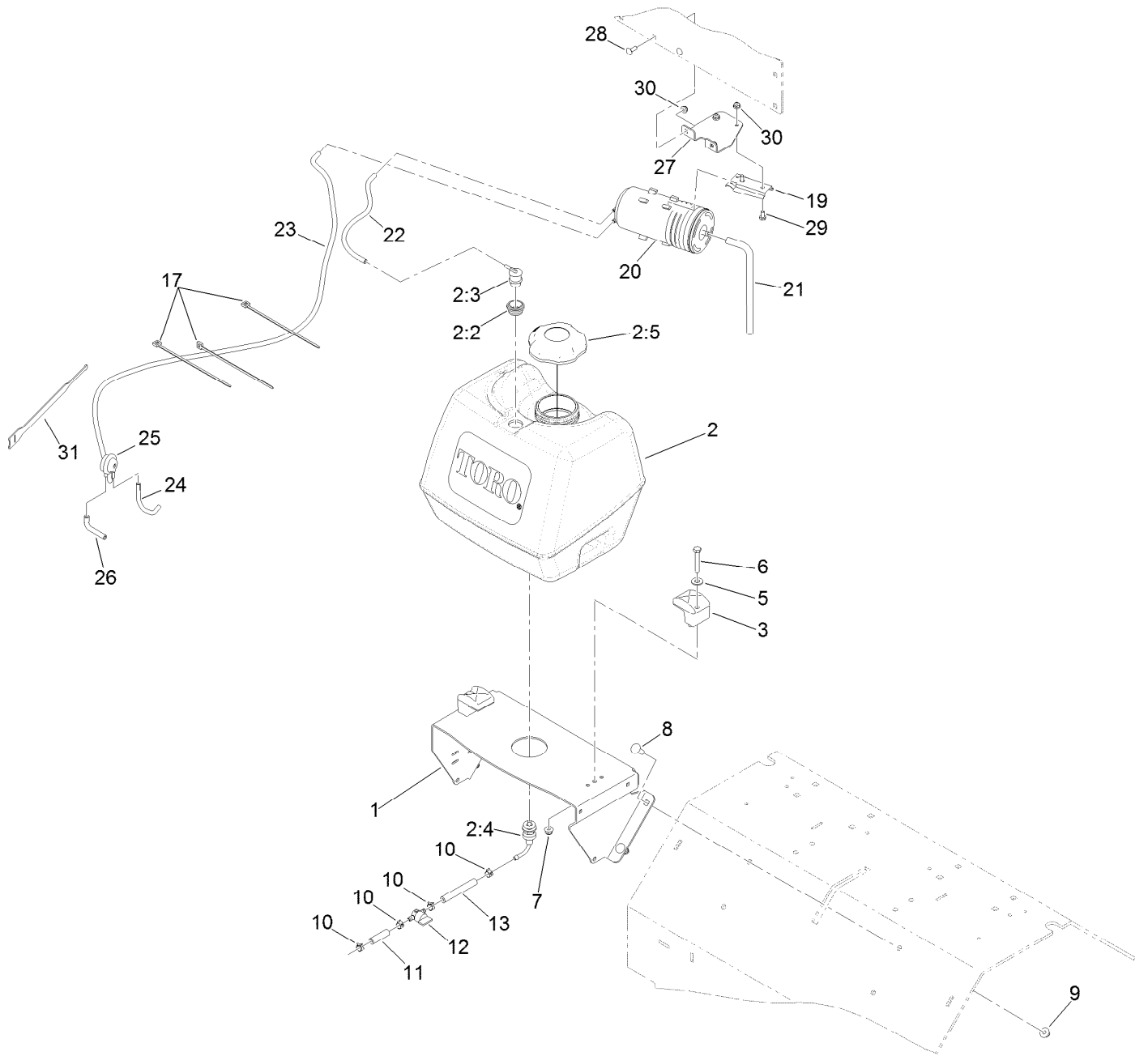


LH Tine Wheel Assembly No. 116-6739 (continued)

<i>Ref.</i>	<i>Part Number</i>	<i>Qty.</i>	<i>Description</i>	<i>Ref.</i>	<i>Part Number</i>	<i>Qty.</i>	<i>Description</i>
1	116-6728	1	Shaft-Tine, LH	4	323-8	24	Screw-HH
2	116-6731	1	Float Tine Shaft ASM	5	3296-39	24	Nut-Lock, NI
2:2	94-8949	2	Bushing-Flange	6	116-7271	1	Collar-Locking ●
3	126-2143	24	Tine-Coring (3/4 Inch)				

● Use Loctite® 243 on threads.

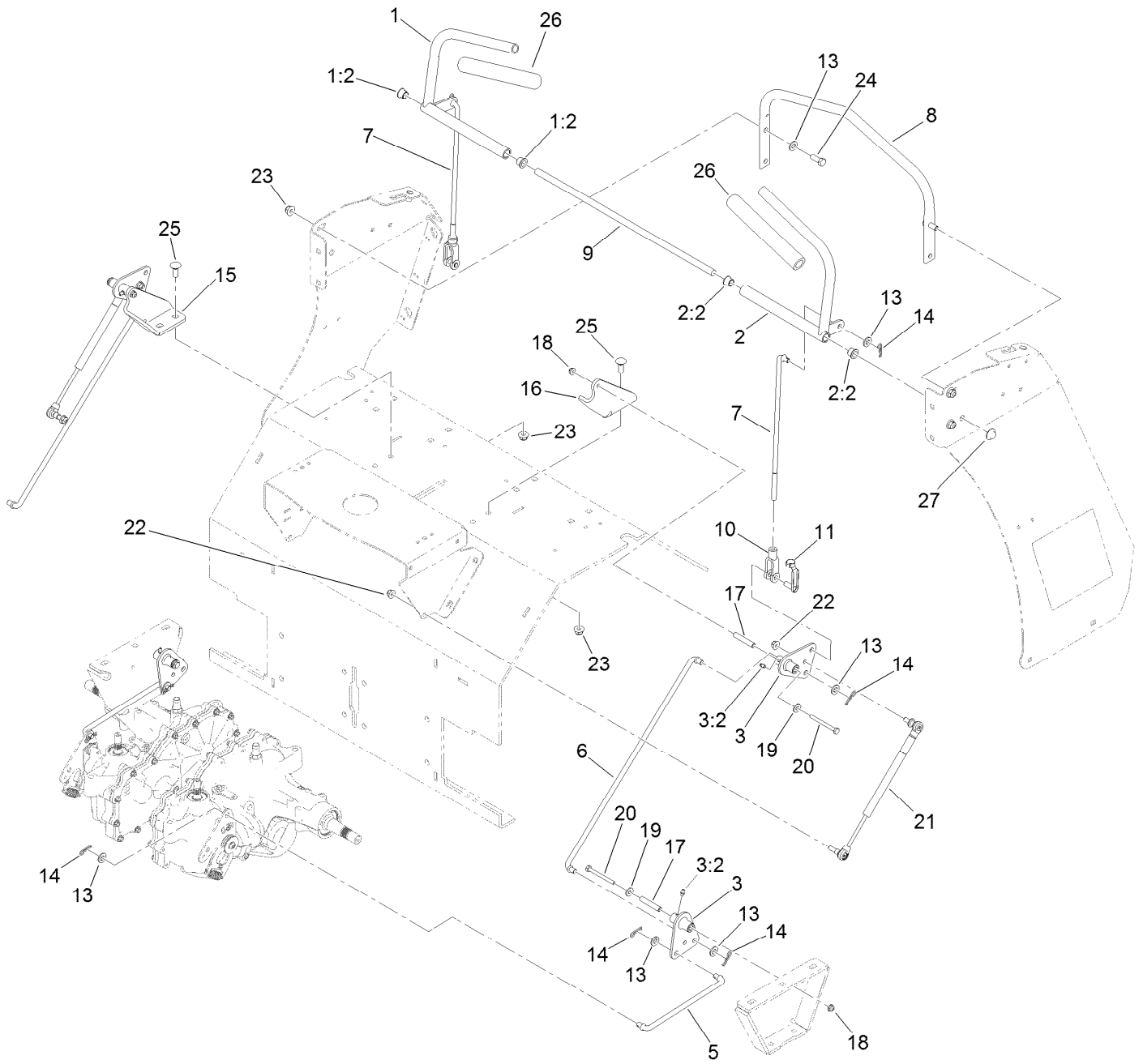
Fuel Assembly



Fuel Assembly (continued)

<i>Ref.</i>	<i>Part Number</i>	<i>Qty.</i>	<i>Description</i>	<i>Ref.</i>	<i>Part Number</i>	<i>Qty.</i>	<i>Description</i>
1	116-9541-01	1	Support-Tank, Fuel	13	105-8342	1	Hose-Fuel
2	126-1526	1	Fuel Tank ASM	17	1-303335	3	Tie-Plastic
2:2	114-0284	1	Grommet	19	114-0292	1	Bracket-Canister, Carbon
2:3	119-3547	1	Valve-Vent, Fuel	20	117-1221	1	Canister-Carbon, 800Cc
2:4	103-2605	1	Fitting-Fuel, Bulkhead	21	115-0962	1	Hose-Vent, Canister
2:5	120-5461	1	Cap-Fuel, Ratcheting	22	126-3703	1	Hose-Emissions
3	107-4543	2	Clamp	23	126-4179	1	Hose-Vent, Formed
5	3256-3	2	Washer-Flat	24	116-2394	1	Hose-Vent, Formed
6	322-10	2	Screw-HH	25	116-2232	1	Valve-Control, Vacuum
7	104-8300	2	Nut-Flange, NI	26	116-2233	1	Hose-Vent, Formed
8	3231-22	4	Screw-CARR	27	126-2991-03	1	Bracket-Mounting, Canister
9	104-8301	4	Nut-Flange, NI	28	3229-1	2	Bolt-CARR
10	2412-98	4	Clamp-Hose	29	321-2	2	Screw-HH
11	119-7856	1	Hose-Fuel	30	104-7201	4	Nut-Flange, NI
12	1-603770	1	Valve-Fuel	31	116-2469	1	Strap-Velcro, Cable Tie

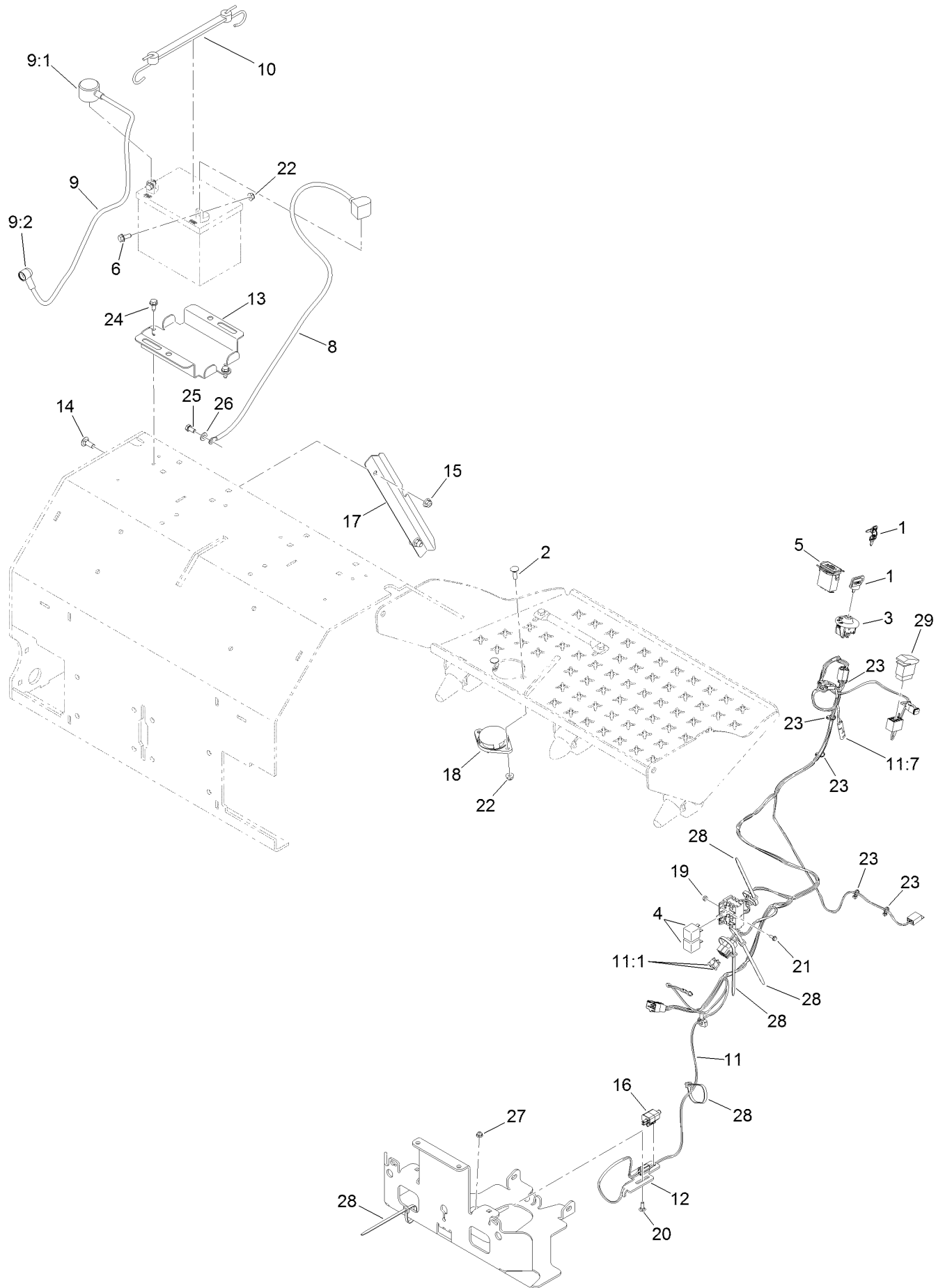
Motion Control Assembly



Motion Control Assembly (continued)

<i>Ref.</i>	<i>Part Number</i>	<i>Qty.</i>	<i>Description</i>	<i>Ref.</i>	<i>Part Number</i>	<i>Qty.</i>	<i>Description</i>
1	116-6567	1	RH Control Handle ASM	14	1-806003	10	Pin-Cotter
1:2	116-4279	2	Bearing-Flange	15	116-6576-03	1	Bracket-Pivot, RH
2	116-6566	1	LH Control Handle ASM	16	116-6577-03	1	Bracket-Pivot, LH
2:2	116-4279	2	Bearing-Flange	17	116-7224	4	Spacer
3	126-0340	4	Crank-Bell	18	104-7201	4	Nut-Flange, NI
3:2	302-19	1	Fitting-Grease	19	3256-2	4	Washer-Flat
5	116-6722	2	Link-Control, Hydro	20	321-14	4	Screw-HH
6	116-9298	2	Link-Control, Bell Crank	21	116-0027	2	Damper-Control, Motion
7	116-6730	2	Link-Control, Bell Crank	22	104-8300	4	Nut-Flange, NI
8	116-6608-03	1	Bar-Reference	23	104-8301	8	Nut-Flange, NI
9	116-6607	1	Shaft-Pivot, Control	24	323-6	4	Screw-HH
10	1-633131	2	Yoke-Linkage, Brake	25	3231-2	4	Bolt-CARR
11	103-2399	2	Pin-Spring, Clevis	26	103-8153	2	Grip-Lever, Control
13	3256-24	14	Washer-Flat	27	32112-14	2	Nut-Push

Electrical Assembly

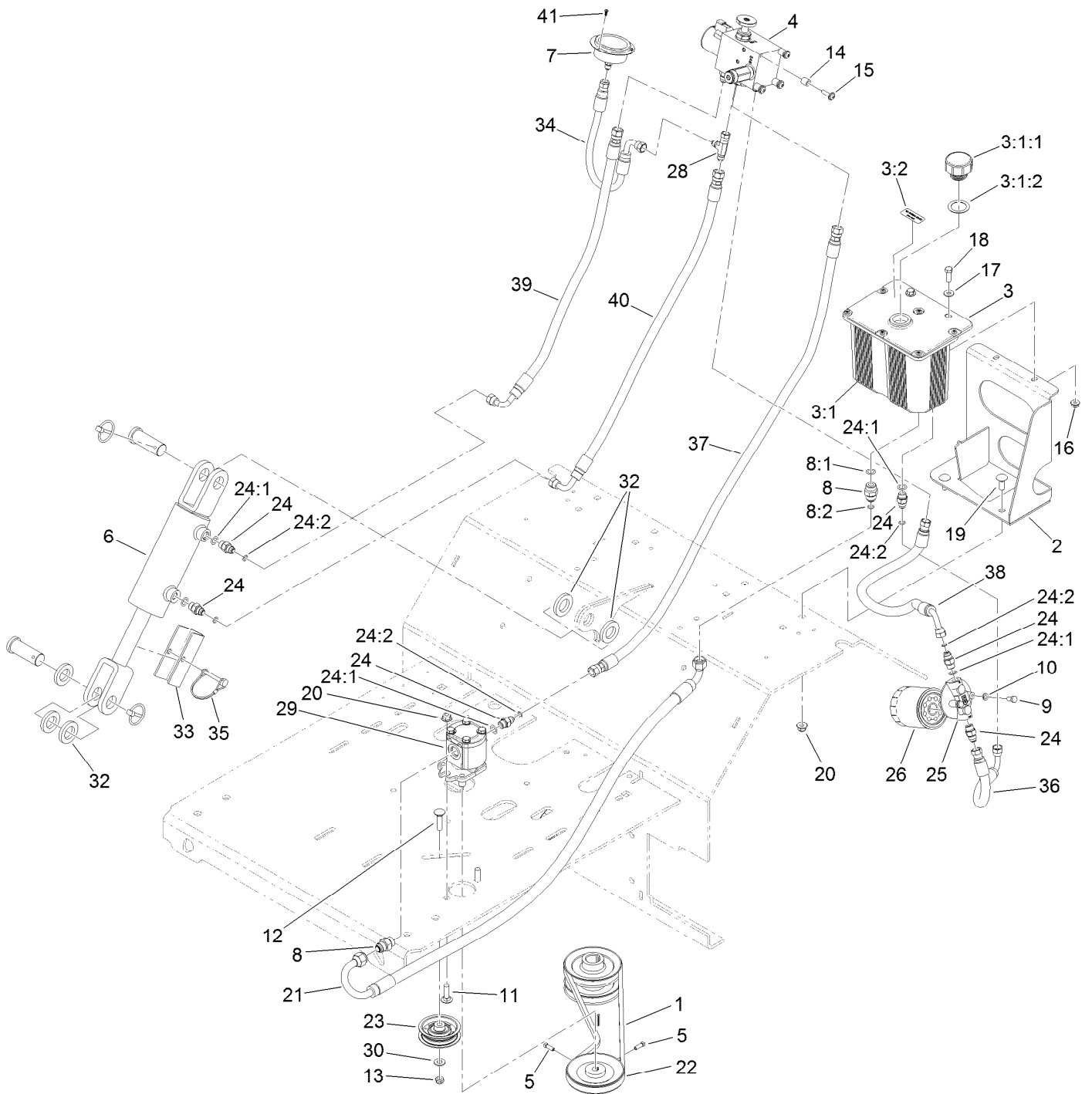


Electrical Assembly (continued)

<i>Ref.</i>	<i>Part Number</i>	<i>Qty.</i>	<i>Description</i>	<i>Ref.</i>	<i>Part Number</i>	<i>Qty.</i>	<i>Description</i>
1	1-603511	1	Keys-Ignition (Spare Pair)	14	3231-2	2	Bolt-CARR
1	63-8360	1	Key-Ignition	15	104-8301	2	Nut-Flange, NI
2	3230-2	2	Bolt-CARR	16	110-6765	1	Switch
3	117-2221	1	Switch-Ignition	17	116-9394-03	1	Guard-Harness
4	1-643275	2	Relay	18	92-6282	1	Switch-Seat
5	1-513374	1	Meter-Hour	19	3296-2	2	Nut-Lock, NI
6	3234-5	2	Screw-HHF	20	3229-1	1	Bolt-CARR
8	117-6422	1	Cable-Battery, Black	21	3290-321	2	Screw-HWH
9	109-7630	1	Positive Battery Cable ASM	22	104-8300	4	Nut-Flange, NI
9:1	109-2407	1	Insulator-Battery	23	1-303287	5	Tie-Cable
9:2	1-543393	1	Insulator-Solenoid	24	32144-70	2	Screw-HWHTF
10	104-2466	1	Holddown-Battery	25	33114-016	1	Screw-HH
11	126-4526	1	Harness-Wire ●	26	33094-00	1	Washer-Plain
11:1	1-816001	2	Fuse-Blade Type, 20 Amp	27	104-7201	1	Nut-Flange, NI
11:7	116-0053	1	Cap-Plug	28	1-303335	5	Tie-Plastic
12	116-7589	1	Mount-Switch	29	95-8999	1	Switch
13	116-9383-03	1	Bracket-Battery				

● Use dielectric grease on all unsealed connectors and terminals only. Do not apply in sealed connectors.

Auxiliary Hydraulic Assembly



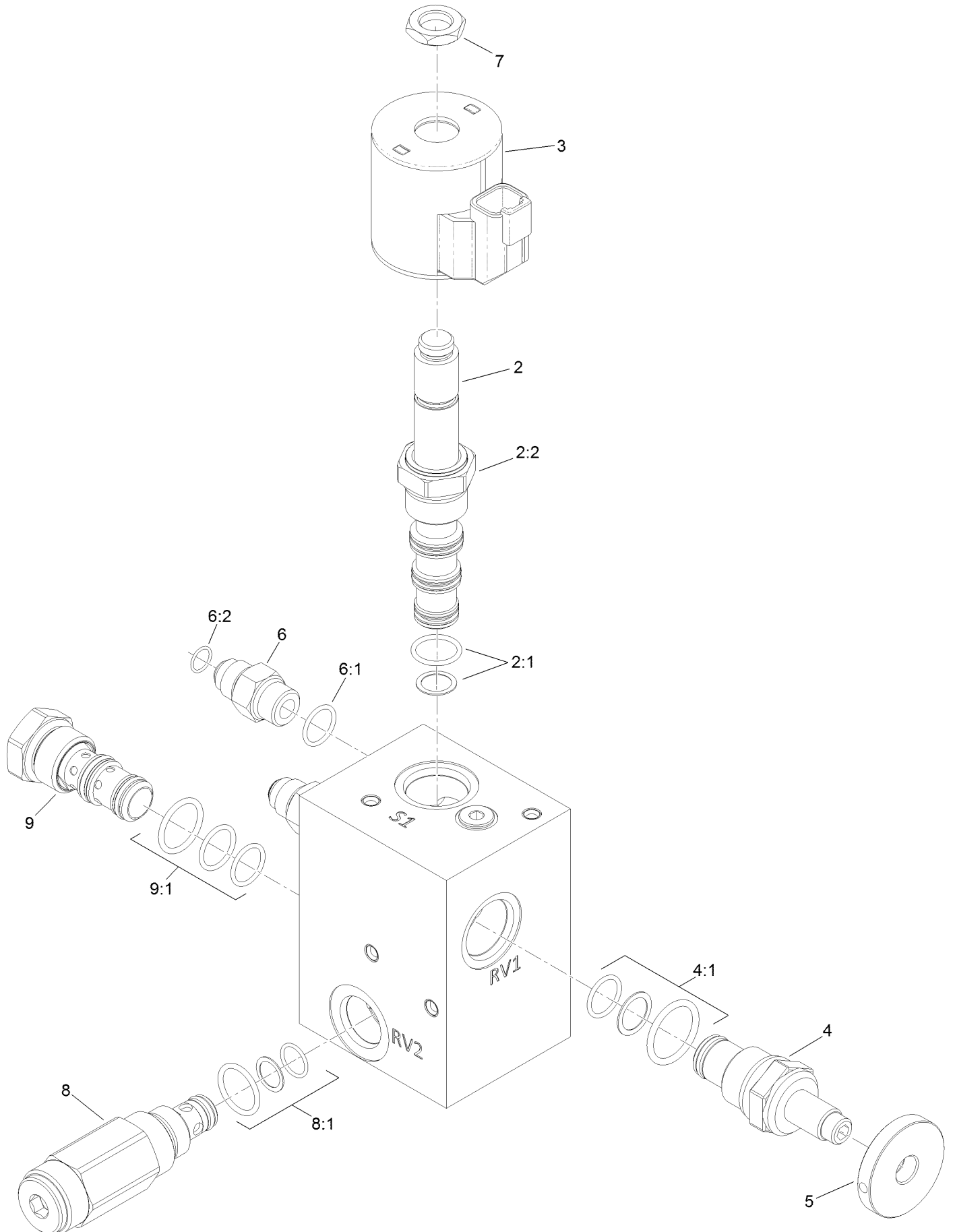
Auxiliary Hydraulic Assembly (continued)

<i>Ref.</i>	<i>Part Number</i>	<i>Qty.</i>	<i>Description</i>	<i>Ref.</i>	<i>Part Number</i>	<i>Qty.</i>	<i>Description</i>
1	116-8874	1	Belt-4L Section	19	3231-2	4	Bolt-CARR
2	116-6618-03	1	Bracket-Tank, Hydraulic	20	104-8301	6	Nut-Flange, NI
3	116-7557	1	Reservoir ASM	21	116-9309	1	Hose-Hydraulic
3:1		1	Tank-Hydraulic ●	22	116-6667	1	Pulley
3:1:1	103-1948	1	Cap-Reservoir, HYD	23	116-6760	1	Pulley-Idler, Flat
3:1:2	103-1949	1	Gasket-Cap	24	103-2156	6	Fitting-Straight
3:2	93-6686	1	Decal-Oil, HYD	24:1	1-603921	1	O-Ring
4	116-9549	1	Valve-Manifold	24:2	103-1020	1	O-Ring
5	3241-6	2	Screw-SQH ■	25	104-7836	1	Head-Filter
6	116-6969	1	HYD Cylinder ASM	26	1-633750	1	Filter-Oil, HYD
7	116-8178	1	Gauge-Pressure	28	353-877	1	Fitting-HYD, Tee
8	1-603990	2	Fitting-Straight	29	116-9129	1	Hydraulic Pump ASM
8:1	1-603920	1	O-Ring	30	3256-24	1	Washer-Flat
8:2	1-603992	1	O-Ring	32	116-6781	5	Spacer
9	321-3	2	Screw-HH	33	116-7307-01	1	Stop-Cylinder
10	1-805004	2	Washer-Lock	34	116-8180	1	Hose-Hydraulic, HP
11	3231-25	2	Bolt-CARR	35	112-2583	1	Pin-Locking
12	3231-4	1	Screw-CARR	36	116-6675	1	Hose-Hydraulic, LP
13	3296-59	1	Nut-Lock, NI	37	116-8151	1	Hose-Hydraulic
14	22-7810	4	Spacer	38	116-9308	1	Hose-Hydraulic
15	110-9361	4	Screw-PPH, Sems	39	116-6677	1	Hose-Hydraulic
16	104-8300	2	Nut-Flange, NI	40	116-6678	1	Hose-Hydraulic, HP
17	3256-2	2	Washer-Flat	41	363-8552	3	Screw-TAP
18	322-5	2	Screw-HH				

● Not serviced separately

■ Use Pro-Lock, Nut Type (P/N 1-840022, .5ml tube) on threads.

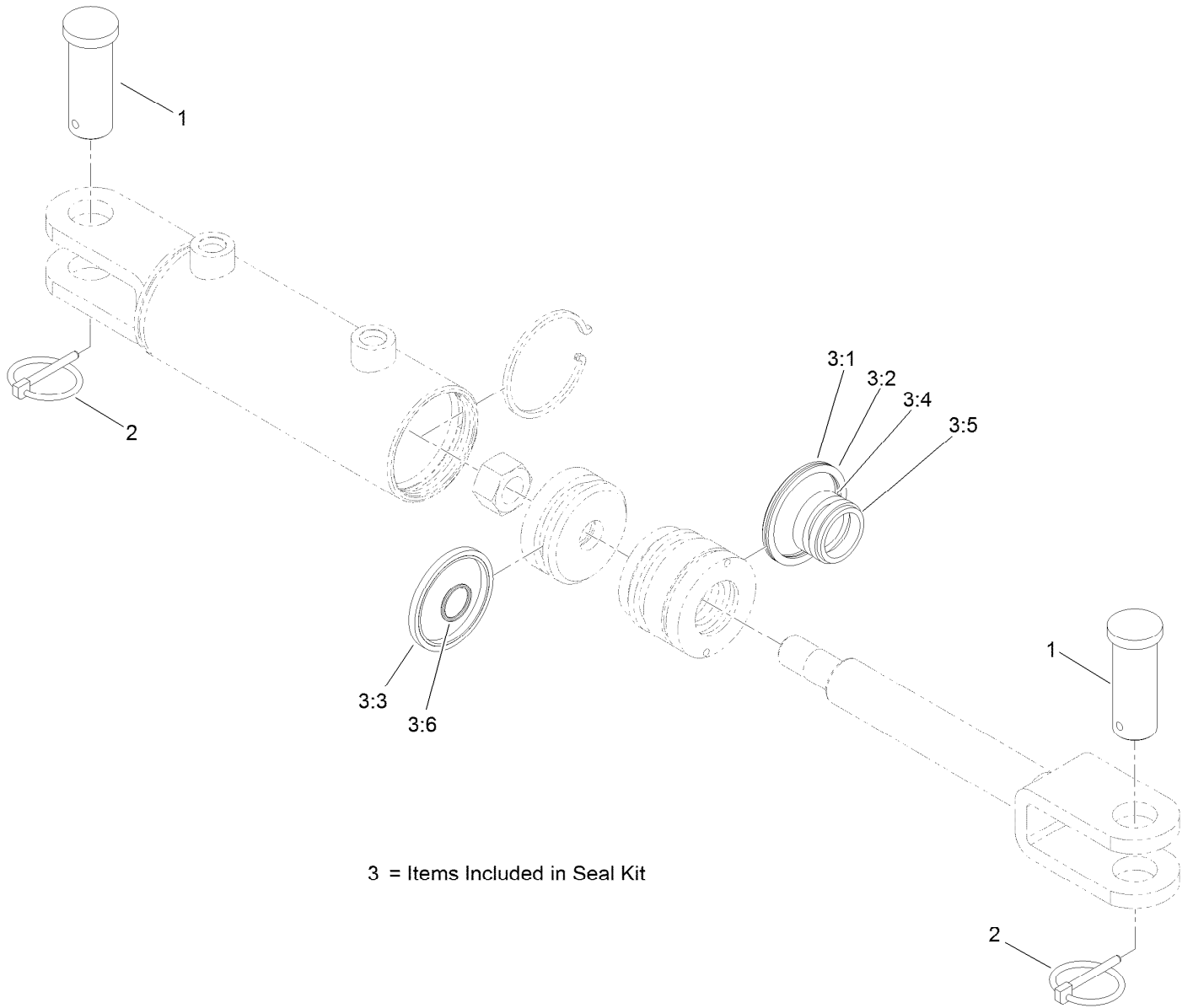
Manifold W/Check and Relief Valve Assembly No. 116-9549



Manifold W/Check and Relief Valve Assembly No. 116-9549 (continued)

<i>Ref.</i>	<i>Part Number</i>	<i>Qty.</i>	<i>Description</i>	<i>Ref.</i>	<i>Part Number</i>	<i>Qty.</i>	<i>Description</i>
2	110-8906	1	Valve-Solenoid	6:1	1-603921	1	O-Ring
2:1	110-8908	1	Spool Valve Seal Kit	6:2	103-1020	1	O-Ring
2:2	110-2634	1	Nut-Coil	7	110-2634	1	Nut-Coil
3	119-4619	1	Coil-Solenoid	8	116-9716	1	Valve-Relief
4	116-9397	1	Valve-Relief, Poppet Style	8:1	116-9717	1	Seal Kit
4:1	116-9398	1	Relief Valve Seal Kit	9	116-9718	1	Valve-Check, P O
5	116-9396	1	Knob (1.5 Dia)	9:1	116-9719	1	Seal Kit
6	103-2156	4	Fitting-Straight				

Hydraulic Cylinder Assembly No. 116-6969

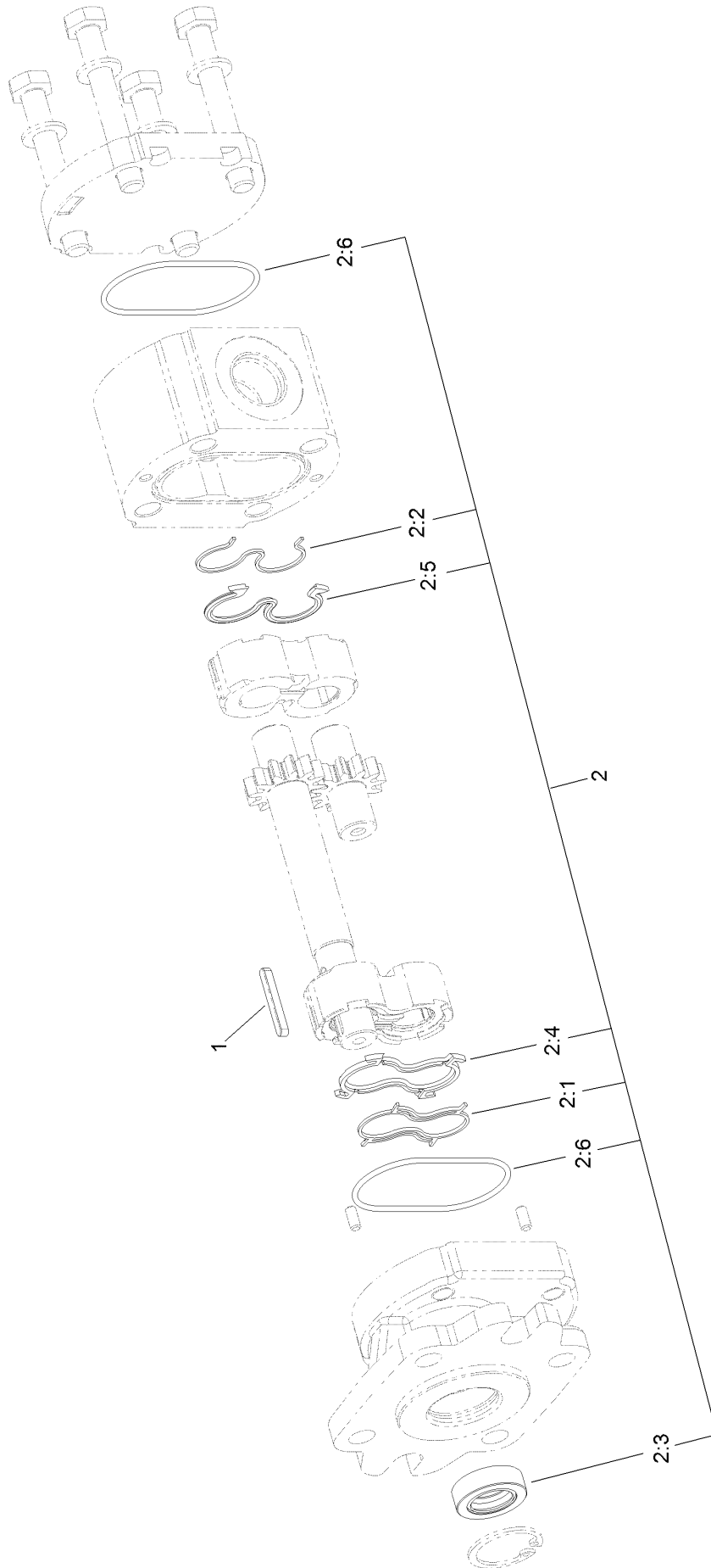


Hydraulic Cylinder Assembly No. 116-6969 (continued)

<i>Ref.</i>	<i>Part Number</i>	<i>Qty.</i>	<i>Description</i>	<i>Ref.</i>	<i>Part Number</i>	<i>Qty.</i>	<i>Description</i>
1	116-7290	2	Pin-Clevis	3:3		1	Psp Seal ●
2	92-1298	2	Pin-Lynch	3:4		1	Bs Seal ●
3	127-3234	1	Seal Kit	3:5		1	Dust Seal ●
3:1		1	O-Ring ●	3:6		1	O-Ring ●
3:2		1	Backup Ring ●				

● Not serviced separately

Hydraulic Pump Assembly No. 116-9129

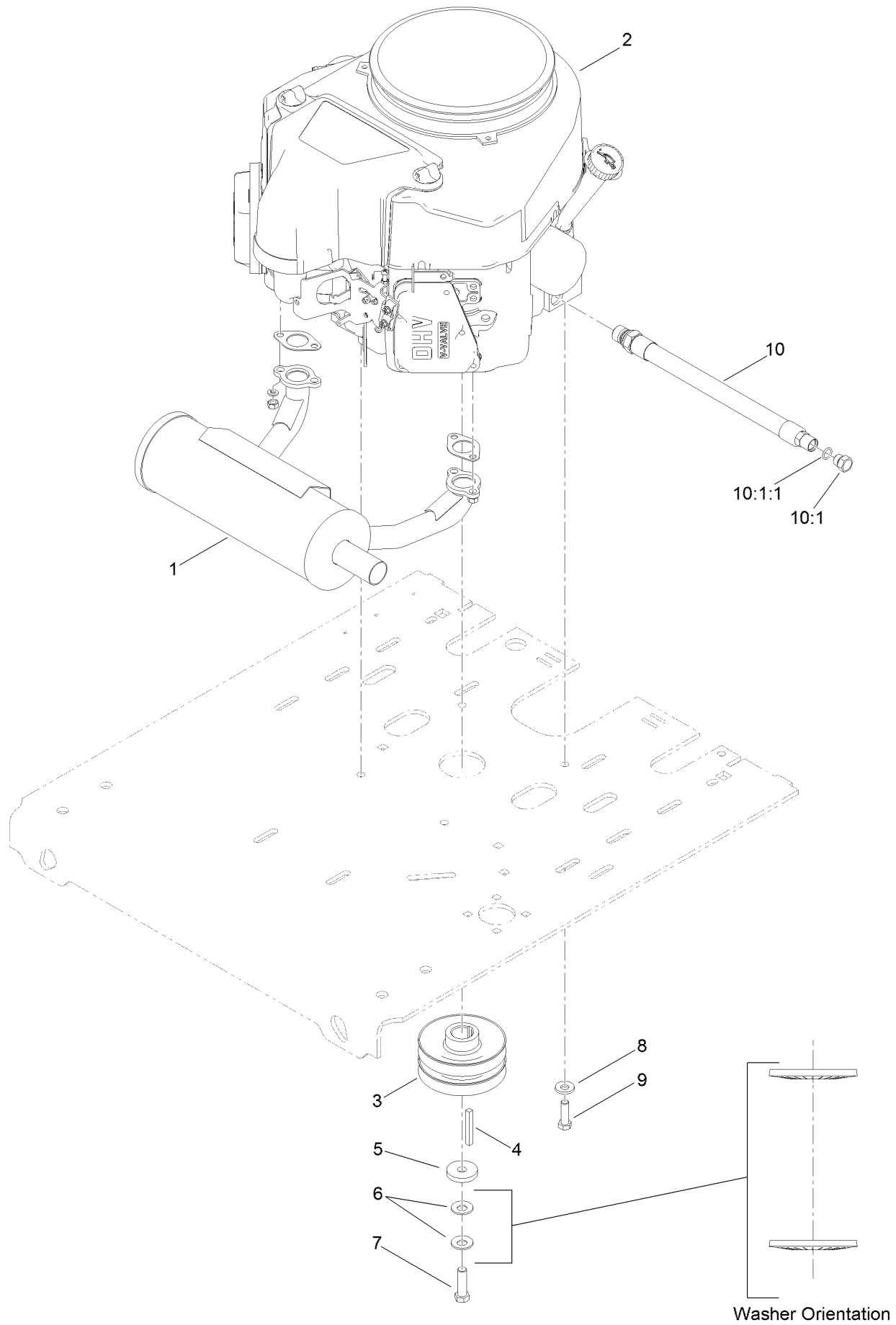


Hydraulic Pump Assembly No. 116-9129 (continued)

<i>Ref.</i>	<i>Part Number</i>	<i>Qty.</i>	<i>Description</i>	<i>Ref.</i>	<i>Part Number</i>	<i>Qty.</i>	<i>Description</i>
1	115-7855	1	Key-Square	2:3		1	Seal-Shaft ●
2	112-0199	1	Seal Kit	2:4		1	Seal-Upper ●
2:1		1	Seal-Anti Extrusion ●	2:5		1	Seal ●
2:2		1	Seal-Anti Extrusion ●	2:6		2	O-Ring ●

● Not serviced separately

Engine Assembly



Engine Assembly (continued)

<i>Ref.</i>	<i>Part Number</i>	<i>Qty.</i>	<i>Description</i>	<i>Ref.</i>	<i>Part Number</i>	<i>Qty.</i>	<i>Description</i>
1	116-3735	1	Muffler-Horizontal	7	109-9761	1	Screw-HH ♦
2		1	Engine-Kawasaki Fs481V, Es ●■	8	98-5975	4	Washer-Belleville
3	116-9709	1	Pulley	9	323-7	4	Screw-HH
4	103-4177	1	Key	10	116-4924	1	Engine Oil Drain Hose ASM ▲
5	1-543610	1	Washer-Clutch	10:1	353-508	1	Plug-HH
6	1-603610	2	Washer-Spring	10:1:1	237-42	1	O-Ring

● Not serviced separately

▲ Use a Teflon Pipe Sealant or equivalent on threads.

♦ Use Pro-Lock, Nut Type (P/N 1-840022, .5ml tube) on threads.

■ Obtain parts from www.kawpowerepc.com

Notes:

Notes:



Count on it.