



Count on it.

Parts Catalog

Golf Controller, Plastic Satellite Pedestal

Model No. Plastic Satellite



Ordering Replacement Parts

To order replacement parts, please supply the part number, the quantity, and the description of each part desired.

Understanding Reference Numbers

Each identified part in an illustration has a reference number. The reference number for a part also appears in the parts list, along with other information about the part.

This catalog uses two special reference number formats, one to indicate parts in a service assembly and another to indicate the quantity of a given part in an illustration.

Service Assembly Reference Numbers

Parts in service assemblies have reference numbers in the form a:b. The a represents the reference number of the entire service assembly and the b represents a sequential number unique to each part within the service assembly.

For example, a wheel assembly might be identified by reference number 6, the tire by 6:1, the valve by 6:2, and the wheel by 6:3. When you order the assembly identified by reference number 6, you receive all parts identified by reference numbers 6:1, 6:2, and 6:3. However, you may also order any part individually. Reference numbers of this type appear in illustration and in parts lists.

Reference Numbers Indicating Quantity

In an illustration, if a reference number indicates more than one part, the reference number has the form nX y. The n represents the quantity of the part, the X is the multiplication symbol, and the y represents the reference number.

For example, in an illustration, the reference number 2X 37 means that two of the parts identified by reference number 37 are indicated.

List of Abbreviations

AR: as required

ASM: assembly

BBC: blade brake control

BHTF: button head thread forming

CARR: carriage

CCW: counter clockwise

CW: clockwise

DEG: degrees

DPA: Dual Point Adjustment

ECM: electronic control module

EXT: external

FH: flat head

GA: gauge

HD: heavy-duty

HF: hex flange

HH: hex head

HHF: hex head flange

HHFTF: hex head flange thread forming

HJ: hex jam

HLH: hex lag head

HOC: height-of-cut

HP: high pressure

HSBH: hex socket button head

HSFH: hex socket flat head

HSH: hex socket head

HWH: hex washer head

HWHTF: hex washer head thread forming

HYD: hydraulic

LH: left hand

LP: low pressure

LPG: Liquefied Petroleum Gas

NI: nylon insert

NPTF: national pipe thread fine

PFH: phillips flat head

PPH: phillips pan head

PPHTF: phillips pan head thread forming

PRH: phillips round head

PTH: phillips truss head

PTO: power-take-off

RH: right hand

ROPS: roll-over protection system

RRB: rear roller brush

SFH: slotted fillister head

SHH: slotted hex head

SHWH: slotted hex washer head

SPH: slotted pan head

SQH: square head

SRH: slotted round head

STD: standard

TAP: self tapping

TTH: torx truss head

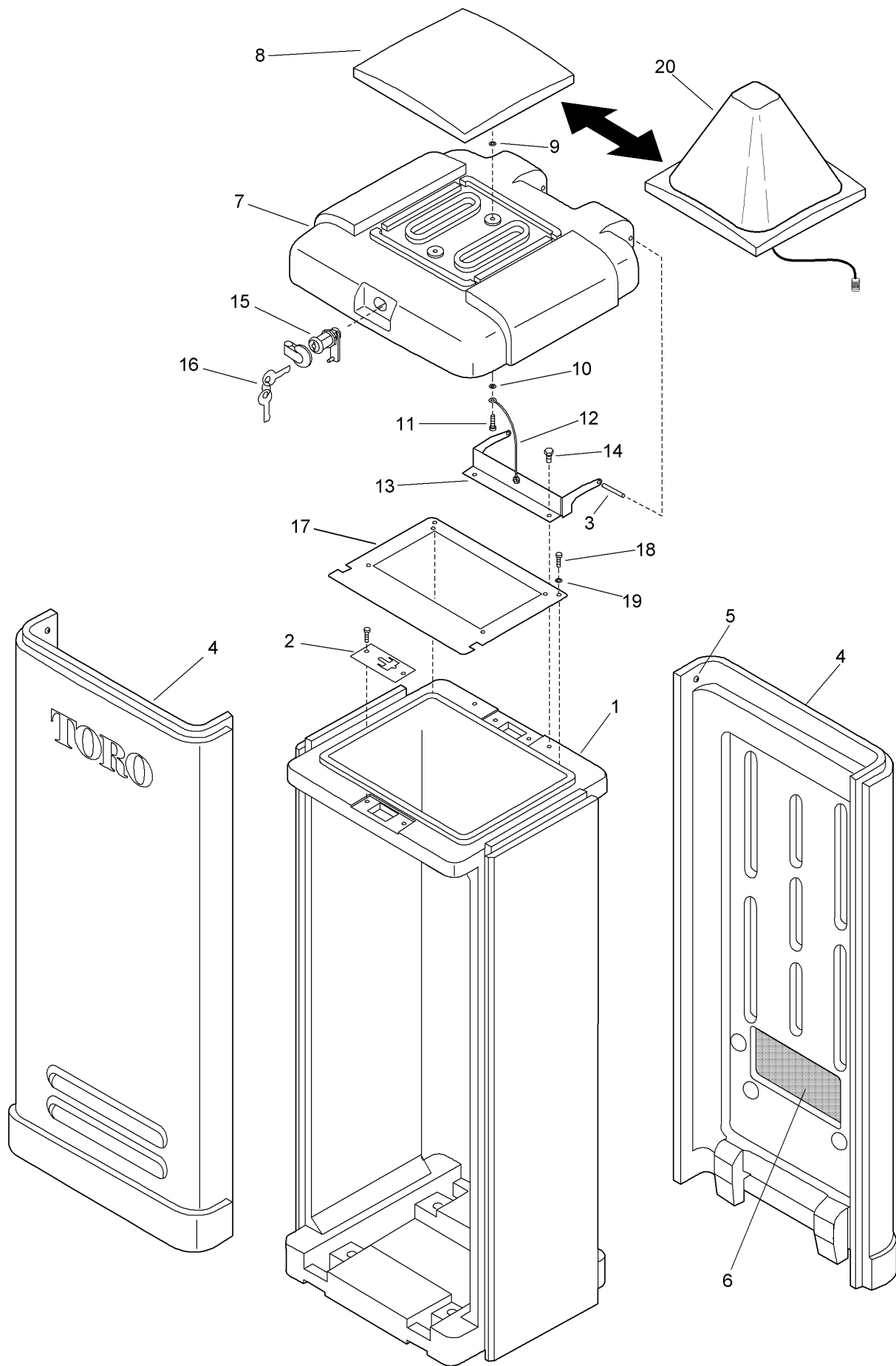
Contents

Plastic Satellite Pedestal 2006 And Earlier Models..... 4

Plastic Satellite Pedestal 2007-2010 Models..... 6

Plastic Satellite Pedestal 2011 and Later 8

Plastic Satellite Pedestal 2006 And Earlier Models



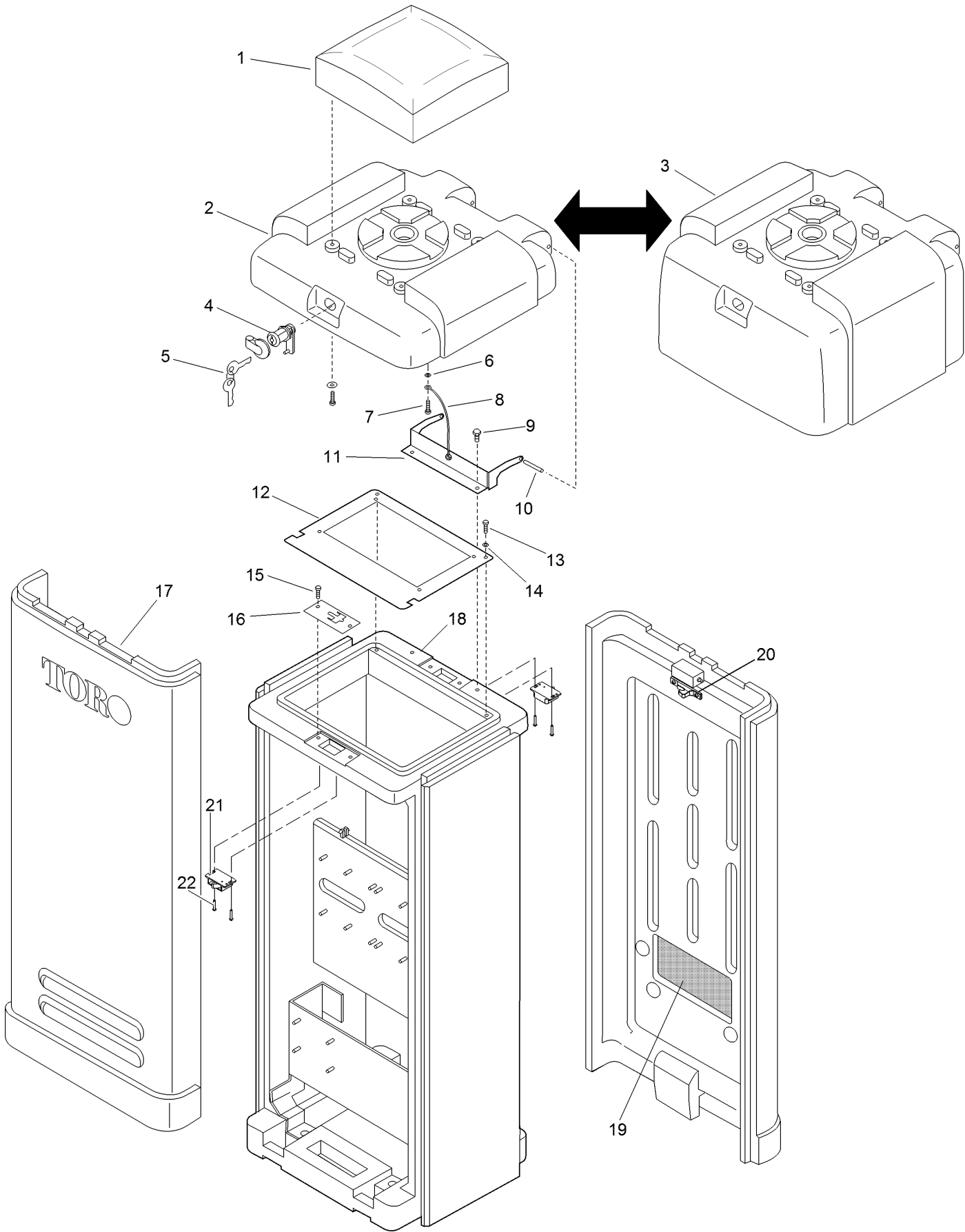
Plastic Satellite Pedestal 2006 And Earlier Models (continued)

<i>Ref.</i>	<i>Part Number</i>	<i>Qty.</i>	<i>Description</i>	<i>Ref.</i>	<i>Part Number</i>	<i>Qty.</i>	<i>Description</i>
1	89-8348	1	Base Assy., Service (Includes Items 2 & 3) ●	11	363-3438	1	Screw, #10-32 X 3/4", Sst
2	102-6155	1	Plate, Locking	12	102-3086	1	Cable, Restraining
3	363-3539	2	Pin	13	102-5915	1	Hinge, Cover
4	89-8347	1	Door Assy., Service ●	14	360-0595	2	Screw, Machine, 1/4-20 X 1/2"
5		2	Detent Latch Assy., Door ■	15	89-8346	1	Lock Kit, Service (Includes Items 15, 16 & Lock Cover) ●
6		2	Air Filter, Foam ■	16	360-0565	2	Keys, Lock (Golf #1382)
7	89-8345	1	Cover Assy., Standard, Service (Includes Items 8-16) ●	17	102-0664	1	Mounting Plate, Tm
8	89-8355	1	Vent Cap Assy., Service (Includes Items 9-11) ●	18	363-3541	2	Screw, Trim, #6
9		2	Washer, Silicone ■	19	363-3542	2	Washer, Finish, #6
10		2	Washer, Flat ■	20	102-3126		Dome Antenna Assy., Used In Vp / Ltc+ And E-Osmac (2006 And Later Models)

● SERVICE ITEMS

■ Not serviced separately

Plastic Satellite Pedestal 2007-2010 Models



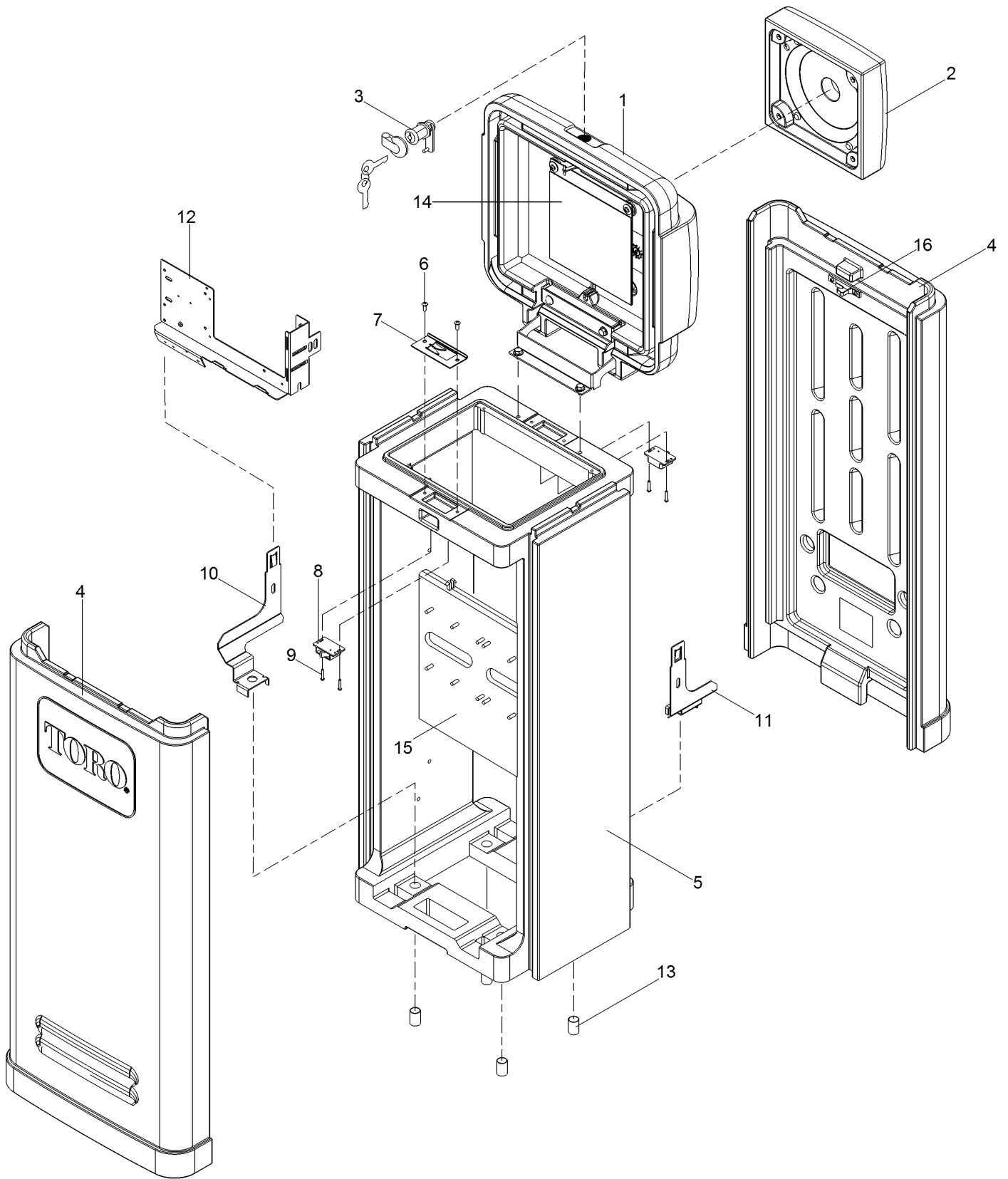
Plastic Satellite Pedestal 2007-2010 Models (continued)

<i>Ref.</i>	<i>Part Number</i>	<i>Qty.</i>	<i>Description</i>	<i>Ref.</i>	<i>Part Number</i>	<i>Qty.</i>	<i>Description</i>
1	102-4778SK	1	Cap, Vent, Green	13	363-3541	2	Screw, Trim, #6
2	102-6147SK	1	Cover, Plastic, Green (Includes Items 1-11)	14	363-3542	2	Washer, Finish, #6
3	102-6148SK	1	Cover, Plastic, Rdr	15	363-3707	2	Screw-PPH
4	89-8346	1	Lock Kit, Service ●	16	102-6155	1	Plate, Locking
5	360-0565	2	Keys, Lock	17	102-6146SK	2	Door, Plastic Pedestal, Green (Includes Items 17 And 19)
6		2	Washer, Flat ■	18	102-4775SK	1	Base, Plastic Pedestal, Green (Includes Items 15, 16 And 18)
7	363-3438	1	Screw, #10-32 X 3/4", Sst	19		2	Air Filter, Foam ■
8	102-3086	1	Cable, Restraining	20	363-9527SK	2	Keeper
9	360-0595	2	Screw, Machine, 1/4-20 X 1/2"	21	363-9526SK	2	Catch
10	363-3539	2	Pin	22	363-9529	4	Screw, #6 X 3/4
11	102-5915	1	Hinge, Cover				
12	102-0664	1	Mounting Plate, Tm				

● SERVICE ITEMS

■ Not serviced separately

Plastic Satellite Pedestal 2011 and Later



Plastic Satellite Pedestal 2011 and Later (continued)

<i>Ref.</i>	<i>Part Number</i>	<i>Qty.</i>	<i>Description</i>	<i>Ref.</i>	<i>Part Number</i>	<i>Qty.</i>	<i>Description</i>
1	118-0825SK	1	Assy., Short Cover, Green (Includes Items 2 And 3)	8	363-9526SK	2	Catch
1	118-0826SK	1	Assy., Short Cover, Desert Sand (Includes Items 2 And 3)	9	363-9529	4	Screw, #6 X 3/4", Ss
1	118-0827SK	1	Assy., Short Cover, Tree Bark (Includes Items 2 And 3)	10	102-8399SK	1	Bracket, Transformer Support, Right
2	102-4778SK	1	Ventcap, Plastic Pedestal, Green	11	102-8400SK	1	Bracket, Transformer Support, Left
2	102-6958SK	1	Ventcap, Plastic Pedestal, Desert Sand	12	102-8402SK	1	Transformer Mounting Plate
2	102-6959SK	1	Ventcap, Plastic Pedestal, Tree Bark	13	102-4774	4	Seamless Tube, Ss, 11/16" X 1.00", Rohs
3	89-8346	1	Lock Kit, Service ●	14	118-0740	1	Holder, Document
4	118-0833SK	2	Door Assy., Plastic Pedestal, Green	15	89-9931SK	1	Backplate Mounting
4	118-0834SK	2	Door Assy., Plastic Pedestal, Desert Sand	16	363-9527SK	2	Keeper
4	118-0835SK	2	Door Assy., Plastic Pedestal, Tree Bark		118-1666SK	1	Pedestal, Retrofit Kit, Green (Includes Items 1-4) ■
5	102-4775SK	1	Kit, Service, Base, Pedestal, Green		118-1667SK	1	Pedestal, Retrofit Kit, Tree Bark (Includes Items 1-4) ■
5	102-6491SK	1	Plastic Pedestal Base, Desert Sand		118-1668SK	1	Pedestal, Retrofit Kit, Desert Sand (Includes Items 1-4) ■
5	102-6483SK	1	Plastic Pedestal Base, Tree Bark		118-0828SK	1	Complete Pedestal, Green (Includes Items 1-9 And 13) ■
6	363-3707	2	Screw-PPH		118-0829SK	1	Complete Pedestal, Tree Bark (Includes Items 1-9 And 13) ■
7	102-9312	1	Plate, Pedestal Latch, Rohs		118-0830SK	1	Complete Pedestal, Desert Sand (Includes Items 1-9 And 13) ■

● SERVICE ITEMS

■ Not illustrated

Notes:

Notes:



Count on it.