


| | | | | | | | |
|--|--|---------|----------|-----------------------|------------------|---------------|---------------|
| Document No: | 380-0058 | Rev: | E | Issue Date : | 8/31/2015 | Page: | 1 of 2 |
| Title: | SERVICE PAGE, NETWORK VP SAT SERIES | | | | Originator : | Noel Macasias | |
| Confidential Property of  Riverside, California | Approx Weight: | 70 | grams | Originating Location: | | Riverside | |
| | Similar To: | | | | | Supersedes: | |
| Release/Change Authorization Number: | | 5106270 | | | | | |

W = 8.5", L = 11", H = 0.03" wt = 0.06 lbs

This is a placeholder page.

See subsequent pages for
original PDF

| REVISION SHEET | | | | | |
|----------------|---------|---|-------------------|---------|-------------|
| Rev. | ECM No. | Description of Change | Drafter | Date | Approved By |
| A | 5074204 | Release to revision A for production | Richard Keightley | 5/17/12 | John Fuller |
| B | 5076167 | Update Parts listing, Release to rev. B | Noel Macasias | 9/20/12 | John Fuller |
| C | 5080395 | Add VPe Parts, Release to rev. C | Noel Macasias | 2/27/13 | John Fuller |
| D | 5092870 | Include Service Kits, Release to rev. D | Noel Macasias | 6/6/14 | John Fuller |
| E | 5106270 | Update Part Numbers, Release to rev. E | Noel Macasias | 8/31/15 | John Fuller |
| | | | | | |
| | | | | | |
| | | | | | |



Count on it.

Parts Catalog

Network VP® and VPe Satellite

Model No. Network VP and VPe



Ordering Replacement Parts

To order replacement parts, please supply the part number, the quantity, and the description of each part desired.

Understanding Reference Numbers

Each identified part in an illustration has a reference number. The reference number for a part also appears in the parts list, along with other information about the part.

This catalog uses two special reference number formats, one to indicate parts in a service assembly and another to indicate the quantity of a given part in an illustration.

Service Assembly Reference Numbers

Parts in service assemblies have reference numbers in the form a:b. The a represents the reference number of the entire service assembly and the b represents a sequential number unique to each part within the service assembly.

For example, a wheel assembly might be identified by reference number 6, the tire by 6:1, the valve by 6:2, and the wheel by 6:3. When you order the assembly identified by reference number 6, you receive all parts identified by reference numbers 6:1, 6:2, and 6:3. However, you may also order any part individually. Reference numbers of this type appear in illustration and in parts lists.

Reference Numbers Indicating Quantity

In an illustration, if a reference number indicates more than one part, the reference number has the form nX y. The n represents the quantity of the part, the X is the multiplication symbol, and the y represents the reference number.

For example, in an illustration, the reference number 2X 37 means that two of the parts identified by reference number 37 are indicated.

List of Abbreviations

AR: as required

ASM: assembly

BBC: blade brake control

BHTF: button head thread forming

CARR: carriage

CCW: counter clockwise

CW: clockwise

DEG: degrees

DPA: Dual Point Adjustment

ECM: electronic control module

EXT: external

FH: flat head

GA: gauge

HD: heavy-duty

HF: hex flange

HH: hex head

HHF: hex head flange

HHFTF: hex head flange thread forming

HJ: hex jam

HLH: hex lag head

HOC: height-of-cut

HP: high pressure

HSBH: hex socket button head

HSFH: hex socket flat head

HSH: hex socket head

HWH: hex washer head

HWHTF: hex washer head thread forming

HYD: hydraulic

LH: left hand

LP: low pressure

LPG: Liquefied Petroleum Gas

NI: nylon insert

NPTF: national pipe thread fine

PFH: phillips flat head

PPH: phillips pan head

PPHTF: phillips pan head thread forming

PRH: phillips round head

PTH: phillips truss head

PTO: power-take-off

RH: right hand

ROPS: roll-over protection system

RRB: rear roller brush

SFH: slotted fillister head

SHH: slotted hex head

SHWH: slotted hex washer head

SPH: slotted pan head

SQH: square head

SRH: slotted round head

STD: standard

TAP: self tapping

TTH: torx truss head

Contents

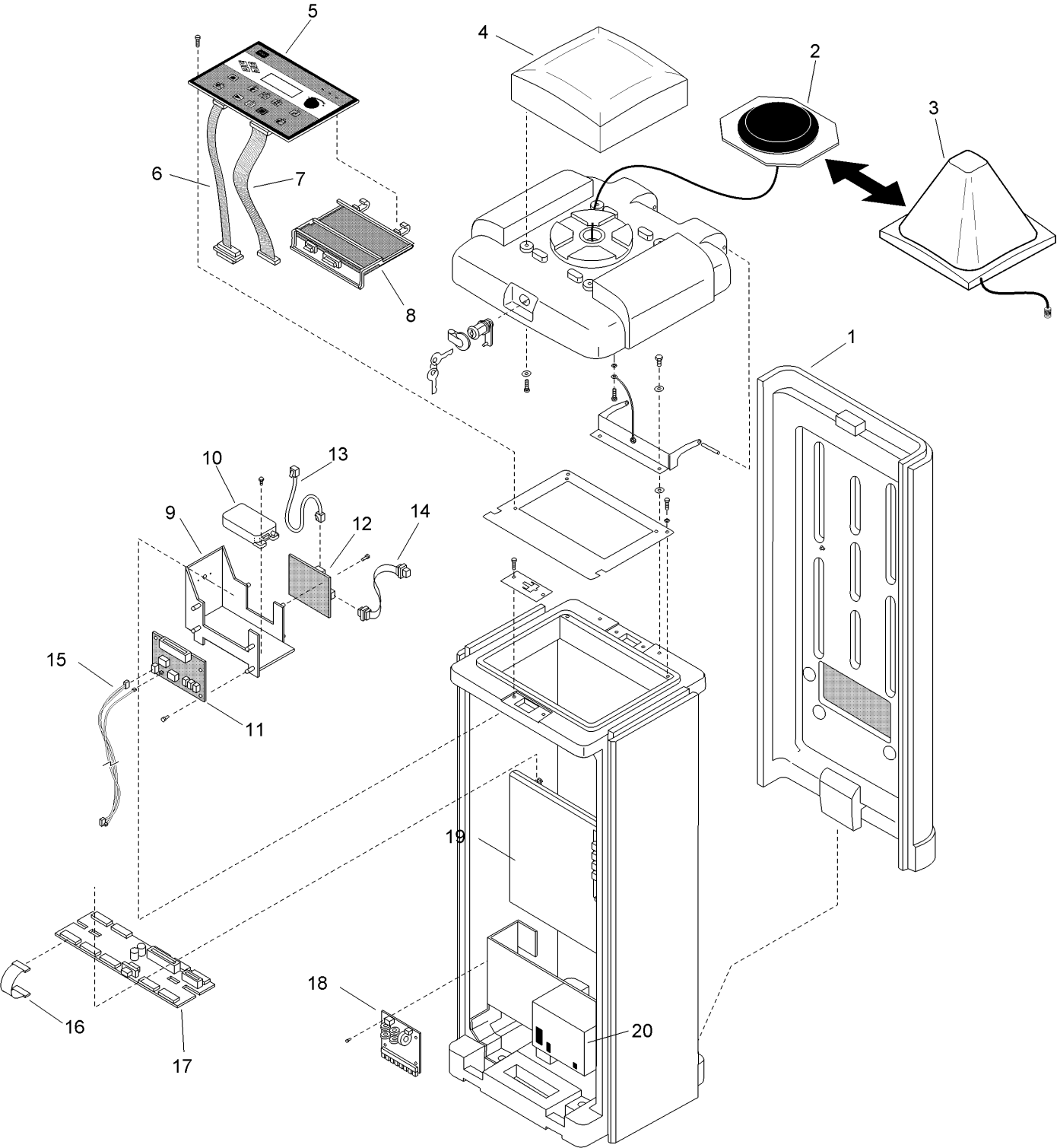
Network VP and VPE - Plastic Cabinet..... 4

Network VP and VPe - 2013 and Later 6

Network VP and VPE - Internal Components..... 8

Network VP and VPE - Power Supply..... 10

Network VP and VPE - Plastic Cabinet



Network VP and VPE - Plastic Cabinet (continued)

| Ref. | Part Number | Qty. | Description | Ref. | Part Number | Qty. | Description |
|------|-------------|------|--|------|-------------|------|---|
| 1 | | 1 | Satellite Plastic Pedestal & Components (See Plastic Cabinet Components Section) ♦ | 12 | 102-3125SK | 1 | Radio Interface Board ○ ▲ |
| 2 | | 1 | Antenna Assy., Plastic Pedestal (See Service Item 102-6808) ♦ | 13 | 363-3619SK | 1 | Rj-45 Cable Assy. ○ ▲ |
| 3 | | 1 | Dome Antenna Assy., Plastic Pedestal ♦ | 14 | 102-3257SK | 1 | Db-9 Cable Assy. ○ ▲ |
| 4 | | 1 | Cover, Satellite Lid (See Plastic Cabinet Components Section) ♦ | 15 | | | Cable Assy., Modem To Surge Board ♦ ▲ |
| 5 | 102-3497SK | 1 | Timing Mechanism (Tm), Vp Satellite | 16 | 102-0670 | | Ribbon Cable, Distribution To Output, 4" Length □ |
| 5 | 102-9738SK | 1 | Timing Mechanism, Vpe Satellite | 17 | 102-2782SK | 1 | Distribution Board |
| 6 | 102-4573SK | 1 | Cable Assy., Tm To Modem | 17 | 102-9124SK | 1 | Ltc+ To Vp Conversion Kit |
| 7 | 102-3030SK | 1 | Cable Assy., Tm To Distribution, 12" | 18 | 102-8086SK | 1 | Pcb Assy. Surge Board □ |
| 8 | 89-9026 | 1 | Standard Modem, Svc. | 19 | | | Vp And Vpe Internal Components (See Vp And Vpe Internal Components Section) ♦ |
| 9 | | 1 | Bracket, Radio Assy. ♦ ▲ | 20 | | 1 | Power Supply Assy. (See Power Supply Assy. Section) ♦ |
| 10 | 363-4638SK | 1 | Maxon Radio ▲ | | 363-4185SK | | Battery, Vp Back-Up, Service ● ■ |
| 11 | 89-7701 | 1 | Modem Assy., Universal, Service ○ ▲ | | 89-9044 | | Cable Assy. Svc., Surge To Modem & Surge To Terminal Block ● ■ |
| | | | | | 102-6808 | | Kit, Service, Antenna Assy., Plastic Pedestal ● ■ |

● SERVICE ITEMS

▲ UHF Models Only

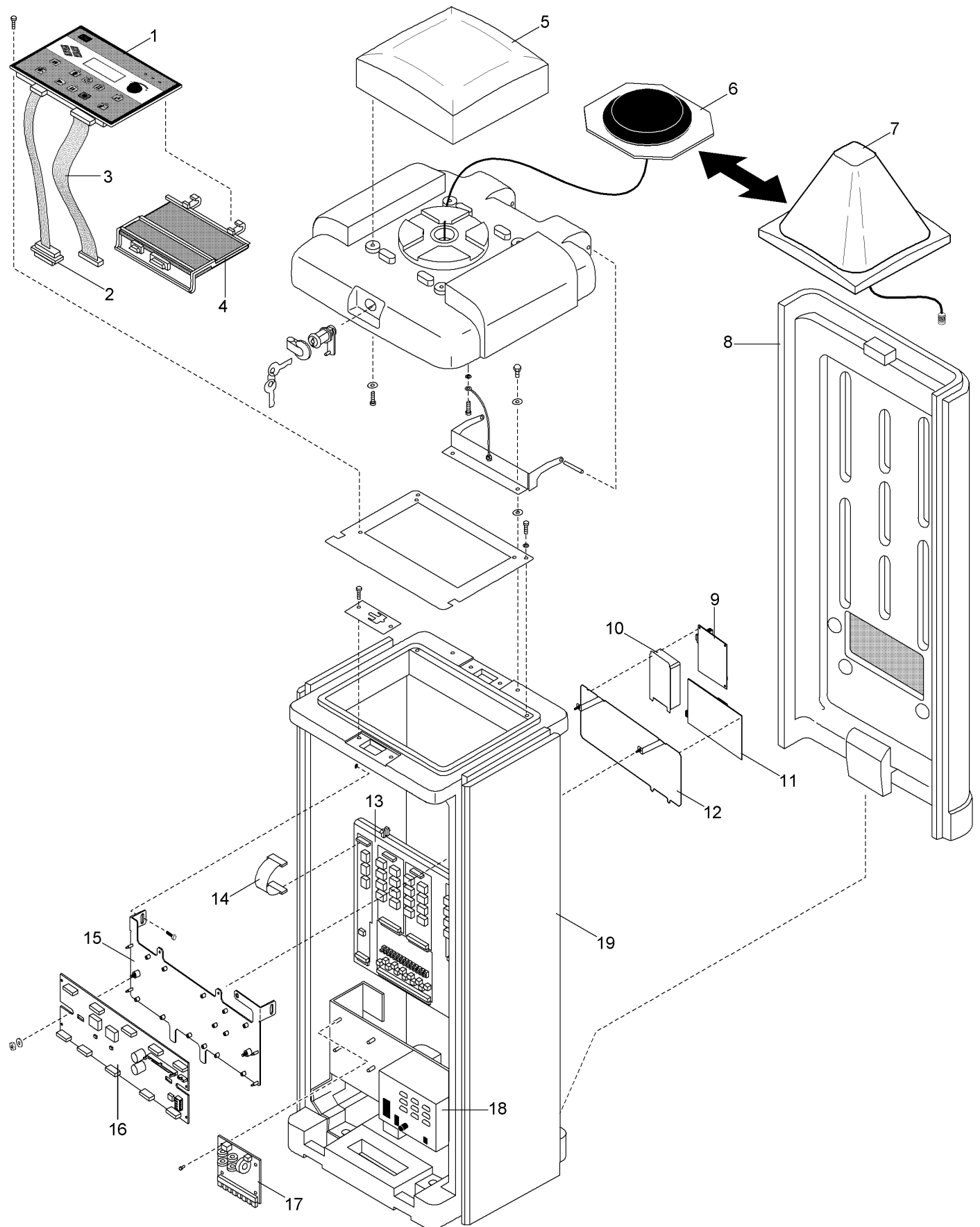
□ Quantity Varies With Model

○ Order Through Finished Goods Distribution System - Minneapolis

■ Not illustrated

♦ Not serviced separately

Network VP and VPe - 2013 and Later

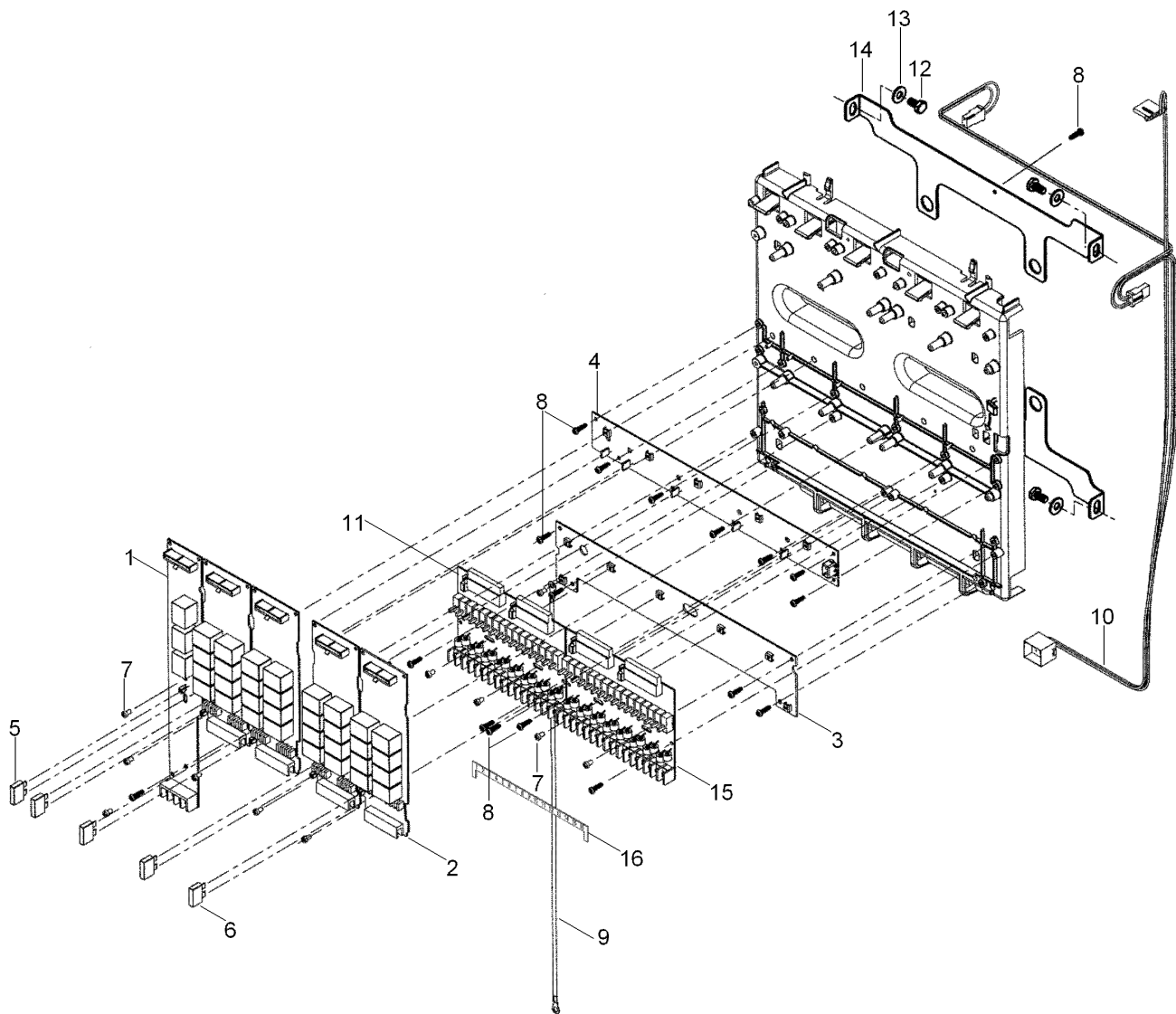


Network VP and VPe - 2013 and Later (continued)

| <i>Ref.</i> | <i>Part Number</i> | <i>Qty.</i> | <i>Description</i> | <i>Ref.</i> | <i>Part Number</i> | <i>Qty.</i> | <i>Description</i> |
|-------------|--------------------|-------------|--|-------------|--------------------|-------------|--|
| 1 | 102-3497SK | 1 | Timing Mechanism (Tm), Vp Satellite | 12 | 118-1938SK | 1 | Bracket, Radio, Vertical |
| 2 | 102-4573SK | 1 | Cable Assy., Tm To Modem | 13 | | 1 | Vp Internal Components (See Vp Internal Components Section) ● |
| 3 | 102-3030SK | 1 | Cable Assy., Tm To Distribution, 12" | 14 | 102-0670 | 5 | Ribbon Cable, Distribution To Output, 4" Length |
| 4 | 89-9026 | 1 | Standard Modem, Svc. | 14 | 118-2736 | 5 | Ribbon Cable, Distribution To Output, 12" Length |
| 4 | 364-1003 | 1 | Cable Assy., Tm To Distribution, 18" | 15 | 118-1937SK | 1 | Bracket, Power Distribution Board, Vertical |
| 5 | | 1 | Cover, Satellite Lid (See Golf Controller Plastic Pedestal Cabinet Components Section) ● | 16 | 118-2737SK | 1 | Power Distribution Board, Straight Connectors |
| 6 | 102-6808 | 1 | Kit, Service, Antenna Assy., Plastic Pedestal | 17 | 102-8086SK | 1 | Pcb Assy. Surge Board |
| 7 | | 1 | Dome Antenna Assy., Plastic Pedestal ● | 18 | | 1 | Power Supply Assy. (See Power Supply Assembly Section) ● |
| 8 | | 1 | Satellite Plastic Pedestal & Components (See Golf Controller, Plastic Pedestal Cabinet Components Section) ● | 19 | | 1 | Satellite Plastic Pedestal & Components (See Golf Controller, Plastic Pedestal Cabinet Components Section) ● |
| 9 | 102-3125SK | 1 | Radio Interface Board | | | | |
| 10 | 363-4638SK | 1 | Maxon Radio | | | | |
| 11 | 89-7701 | 1 | Modem Assy., Universal, Service | | | | |

● Not serviced separately

Network VP and VPE - Internal Components



Network VP and VPE - Internal Components (continued)

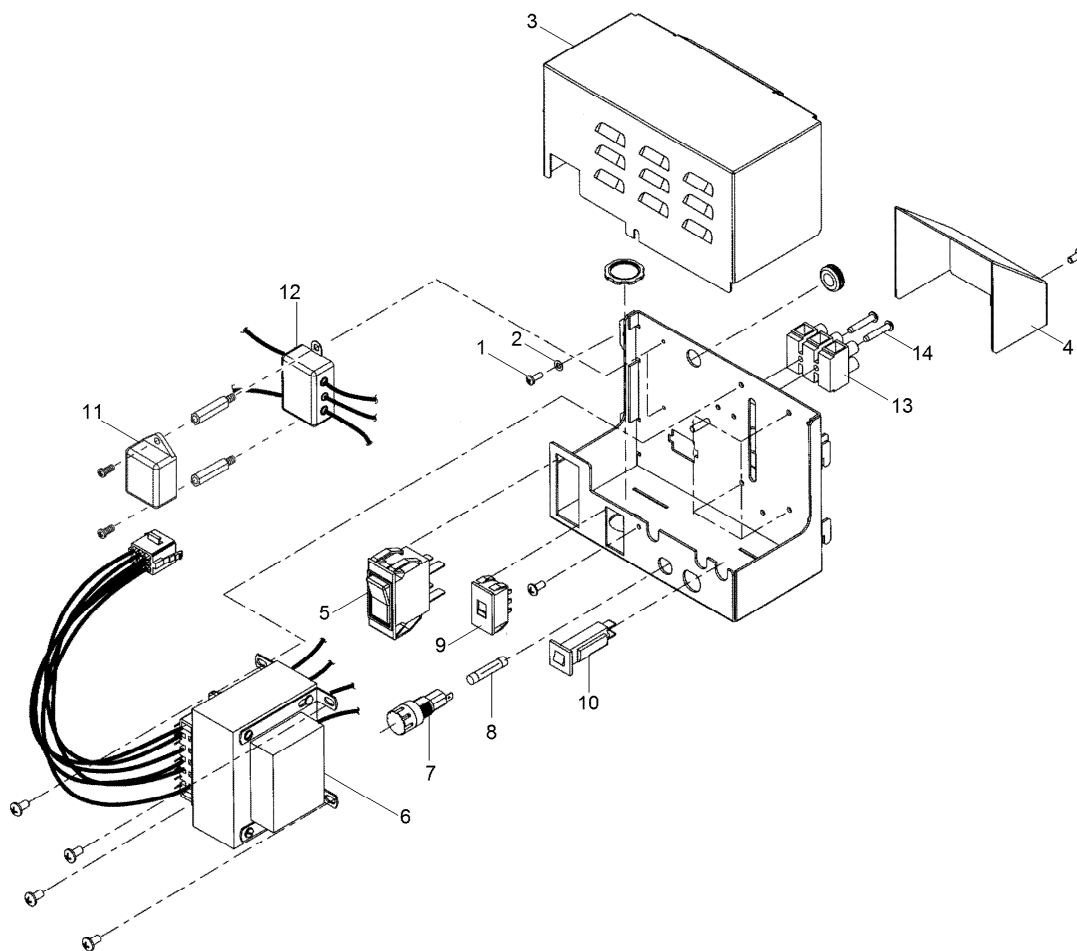
| <i>Ref.</i> | <i>Part Number</i> | <i>Qty.</i> | <i>Description</i> | <i>Ref.</i> | <i>Part Number</i> | <i>Qty.</i> | <i>Description</i> |
|-------------|--------------------|-------------|--|-------------|--------------------|-------------|---|
| 1 | 102-3015SK | 1 | Pump/Common Module Assy. (Includes Items 5, 7 And 102-0670 Ribbon Cable) ▲ ◆ | 11 | 102-0639 | | 16-Station Module Assy. (M1 Surge Upgrade) (Includes Items 7 And 8) ▲ ◆ |
| 2 | 102-0654 | | Output Module Assy., 8-Station (Includes Items 6, 7 And 102-0670 Ribbon Cable) ▲ ◆ | 11 | 102-0640 | | 16-Station Module Assy. (M2 Surge Upgrade) (Includes Items 7 And 8) ▲ ◆ |
| 3 | 102-0652 | 1 | Ground Bus Bar Pcb Assy., Service (Includes Item 8) | 11 | 102-0641 | | 16-Station Module Assy. (M3 Surge Upgrade) (Includes Items 7 And 8) ▲ ◆ |
| 4 | 102-0653 | 1 | 24 Vac Bus Bar Pcb Assy., Service (Includes Item 8) | 11 | 102-0642 | | 16-Station Module Assy. (M4 Surge Upgrade) (Includes Items 7 And 8) ▲ ◆ |
| 5 | 102-0658 | 1 | Fuse, 1.0 Amp, Fast-Blow, Service (5-Pack) | 12 | 360-0595 | 4 | Screw, Machine, 1/4-20 X 1/2" |
| 6 | 102-0657 | 4 | Fuse, 3.0 Amp, Fast-Blow, Service (5-Pack) | 13 | 360-0140 | 4 | Washer-Flat |
| 7 | 102-0671 | 11 | Screw, Machine, 6-32 X 1/4" | 14 | | 2 | Bracket, Mount Backplate ■ |
| 8 | 363-1355 | 20 | Screw, Tap, #6 | 15 | 102-4586 | | Plastic Cover, Switches ▲ |
| 9 | 102-0685 | 1 | Wire Harness Assy., Grounding | 16 | 102-5940SK | | Kit, Station Labels, Numbered, Plastic ▲ |
| 10 | 102-0686 | 1 | Wire Harness Assy., Power Supply | | | | |
| N/I | 102-0638 | | 8-Station Terminal Block (M0 Surge Level) ▲ ◆ ● | | | | |

● Not illustrated

▲ Quantity Varies With Model

◆ Order Through Finished Goods Distribution System - Minneapolis

■ Not serviced separately



Network VP and VPE - Power Supply

| Ref. | Part Number | Qty. | Description |
|------|-------------|------|---|
| 1 | 4-1063 | 2 | Screw, Tap, #6 |
| 2 | | 2 | Washer, Lock, #6 ♦ |
| 3 | 102-0646 | 1 | Cover, Power Supply |
| 4 | 102-0695 | 1 | Cover, Wire Terminal |
| 5 | 102-0666 | 1 | On/Off Switch |
| 6 | 102-0382 | 1 | Transformer Assy., Service ● |
| 6 | 102-3759 | 1 | Transformer Assy., Service (For Japanese Models Only) ● |
| 7 | 102-0649 | 1 | Fuse Holder W/Cap |
| 8 | 102-0650 | 1 | Fuse, 3.2 Amp, Slow-Blow (10-Pack) ● |
| 9 | 102-0648 | 1 | Slide Switch 115/230V |
| 10 | 102-0651 | 1 | Circuit Breaker, 4.0 Amp |
| 11 | 118-0538SK | 1 | Ttf Surge Protector |
| 12 | 102-0700 | 1 | Filter Assy., Rfi |
| 13 | 102-0667 | 1 | Terminal Block, 115/230V (Includes Item 14) ▲ |
| 14 | 360-0297 | 2 | Screw, #6 X 3/4" |
| | 102-0645 | 1 | Power Supply Assembly (Includes Items 1-14) ■ |

● SERVICE ITEMS
▲ (Includes Item 14)

■ Not illustrated
♦ Not serviced separately

Notes:



Count on it.