



Count on it.

Parts Catalog

**21in Heavy-Duty Recycler®/Rear
Bagger Lawn Mower**

Model No. 22289—Serial No. 315000001 and Up



Ordering Replacement Parts

To order replacement parts, please supply the part number, the quantity, and the description of each part desired.

Understanding Reference Numbers

Each identified part in an illustration has a reference number. The reference number for a part also appears in the parts list, along with other information about the part.

This catalog uses two special reference number formats, one to indicate parts in a service assembly and another to indicate the quantity of a given part in an illustration.

Service Assembly Reference Numbers

Parts in service assemblies have reference numbers in the form a:b. The a represents the reference number of the entire service assembly and the b represents a sequential number unique to each part within the service assembly.

For example, a wheel assembly might be identified by reference number 6, the tire by 6:1, the valve by 6:2, and the wheel by 6:3. When you order the assembly identified by reference number 6, you receive all parts identified by reference numbers 6:1, 6:2, and 6:3. However, you may also order any part individually. Reference numbers of this type appear in illustration and in parts lists.

Reference Numbers Indicating Quantity

In an illustration, if a reference number indicates more than one part, the reference number has the form nX y. The n represents the quantity of the part, the X is the multiplication symbol, and the y represents the reference number.

For example, in an illustration, the reference number 2X 37 means that two of the parts identified by reference number 37 are indicated.

List of Abbreviations

AR: as required

ASM: assembly

BBC: blade brake control

BHTF: button head thread forming

CARR: carriage

CCW: counter clockwise

CW: clockwise

DEG: degrees

DPA: Dual Point Adjustment

ECM: electronic control module

EXT: external

FH: flat head

GA: gauge

HD: heavy-duty

HF: hex flange

HH: hex head

HHF: hex head flange

HHFTF: hex head flange thread forming

HJ: hex jam

HLH: hex lag head

HOC: height-of-cut

HP: high pressure

HSBH: hex socket button head

HSFH: hex socket flat head

HSH: hex socket head

HWH: hex washer head

HWHTF: hex washer head thread forming

HYD: hydraulic

LH: left hand

LP: low pressure

LPG: Liquefied Petroleum Gas

NI: nylon insert

NPTF: national pipe thread fine

PFH: phillips flat head

PPH: phillips pan head

PPHTF: phillips pan head thread forming

PRH: phillips round head

PTH: phillips truss head

PTO: power-take-off

RH: right hand

ROPS: roll-over protection system

RRB: rear roller brush

SFH: slotted fillister head

SHH: slotted hex head

SHWH: slotted hex washer head

SPH: slotted pan head

SQH: square head

SRH: slotted round head

STD: standard

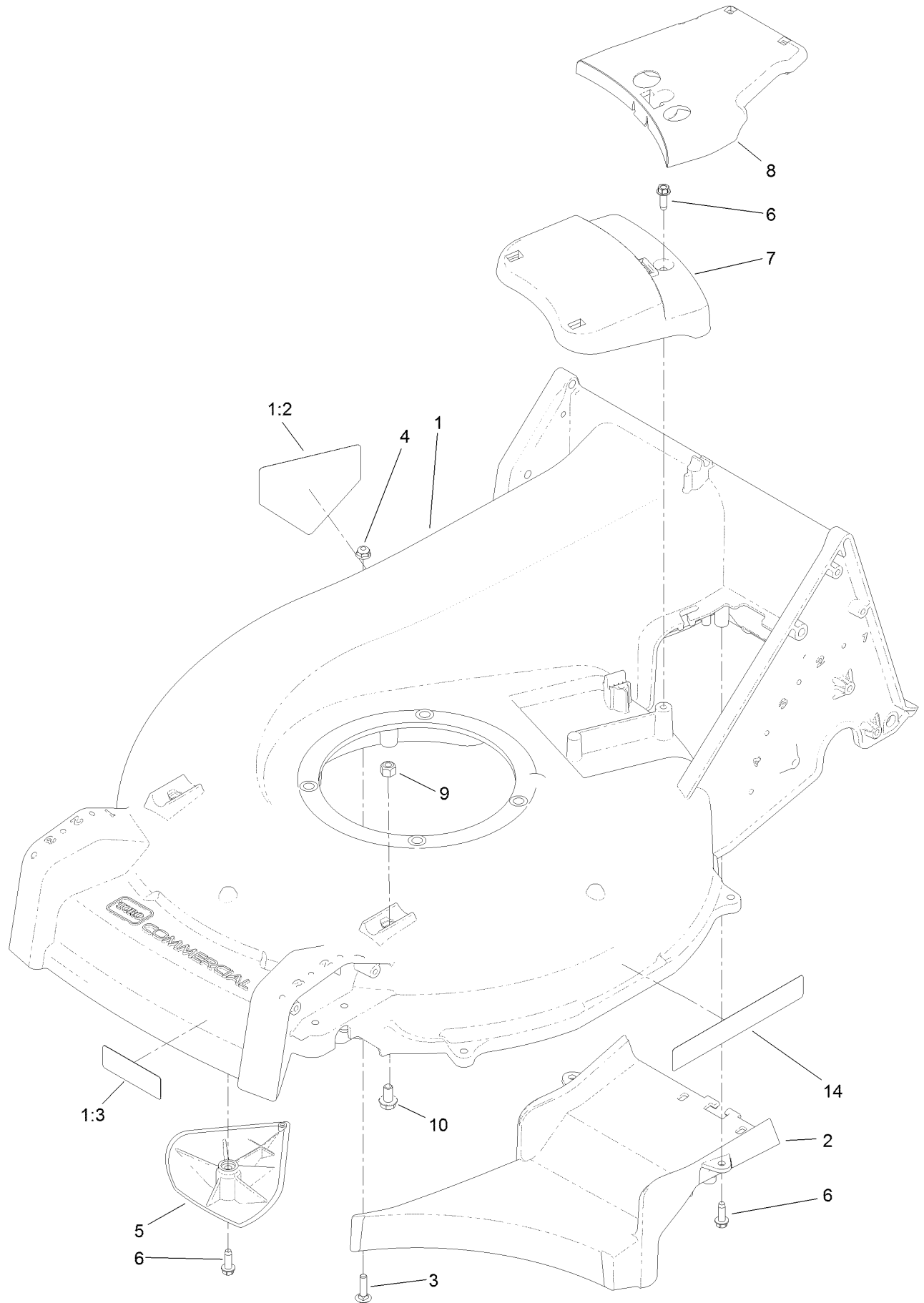
TAP: self tapping

TTH: torx truss head

Contents

Housing Assembly	4
Grass Bag Assembly	6
Engine and Blade Assembly	8
Shroud, Flywheel and Fuel Tank Assembly	10
Dipstick, Brake and Governor Arm Assembly	12
Carburetor, Muffler, Air Cleaner and Valve Cover Assembly	14
Front Wheel and Height-of-Cut and Assembly	16
Rear Wheel and Height-of-Cut Assembly	18
Handle Assembly	20
Attachments and Accessories	22

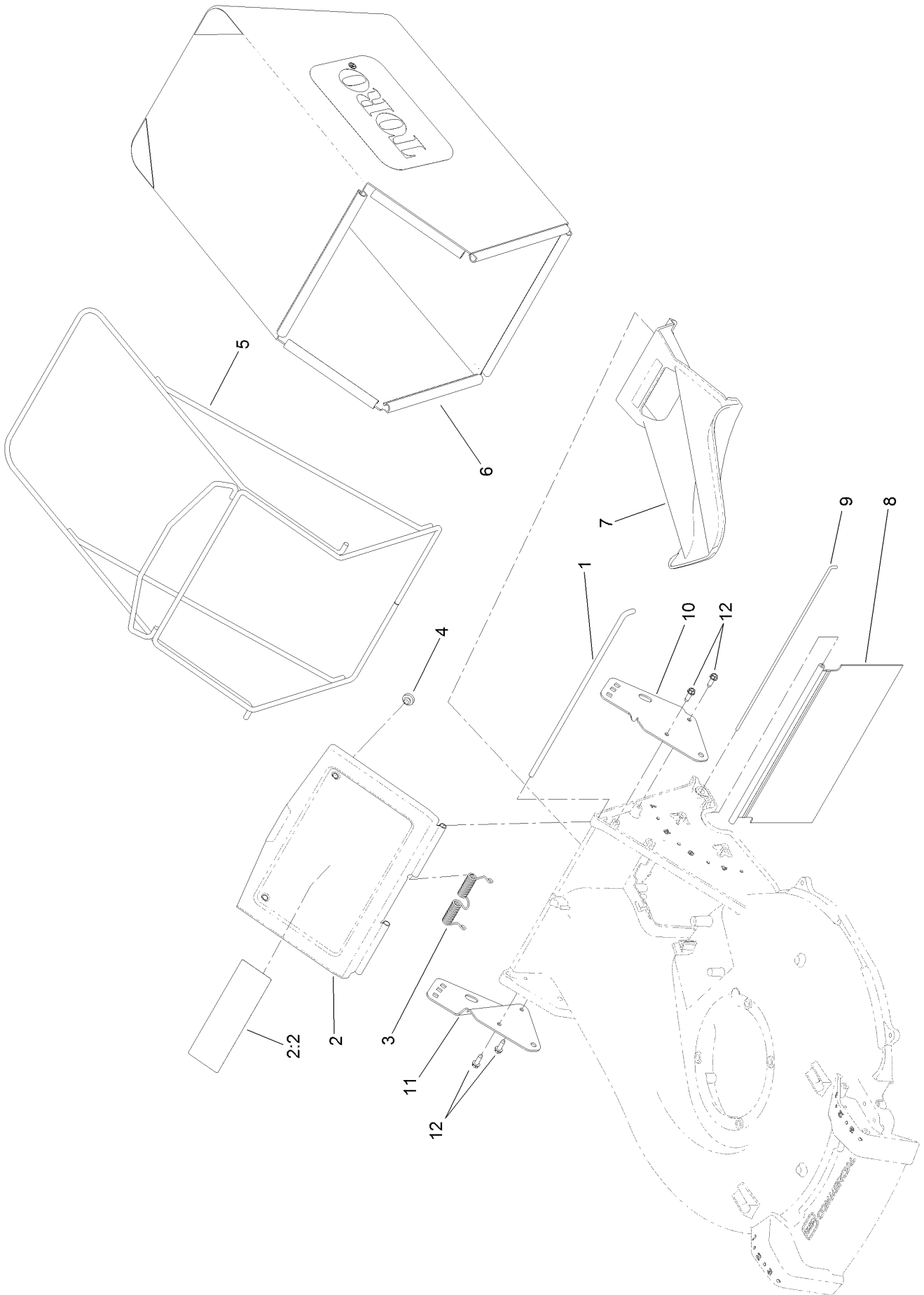
Housing Assembly



Housing Assembly (continued)

<i>Ref.</i>	<i>Part Number</i>	<i>Qty.</i>	<i>Description</i>	<i>Ref.</i>	<i>Part Number</i>	<i>Qty.</i>	<i>Description</i>
1	125-8400	1	Housing ASM	6	49-2040	5	Screw-HWHTF
1:2	94-8072	1	Decal-Danger	7	125-5038	1	Cover-Belt, Front
1:3	130-9670	1	Decal-Warning, Blade	8	125-8380	1	Cover-Belt, Rear
2	125-1002-01	1	Floor-Chute	9	3296-29	2	Nut-Lock, NI
3	3229-2	1	Screw-CARR	10	3234-7	2	Screw-HHF
4	104-7201	1	Nut-Flange, NI	14	119-2368	2	Decal-Recycler
5	125-5041	2	Kicker				

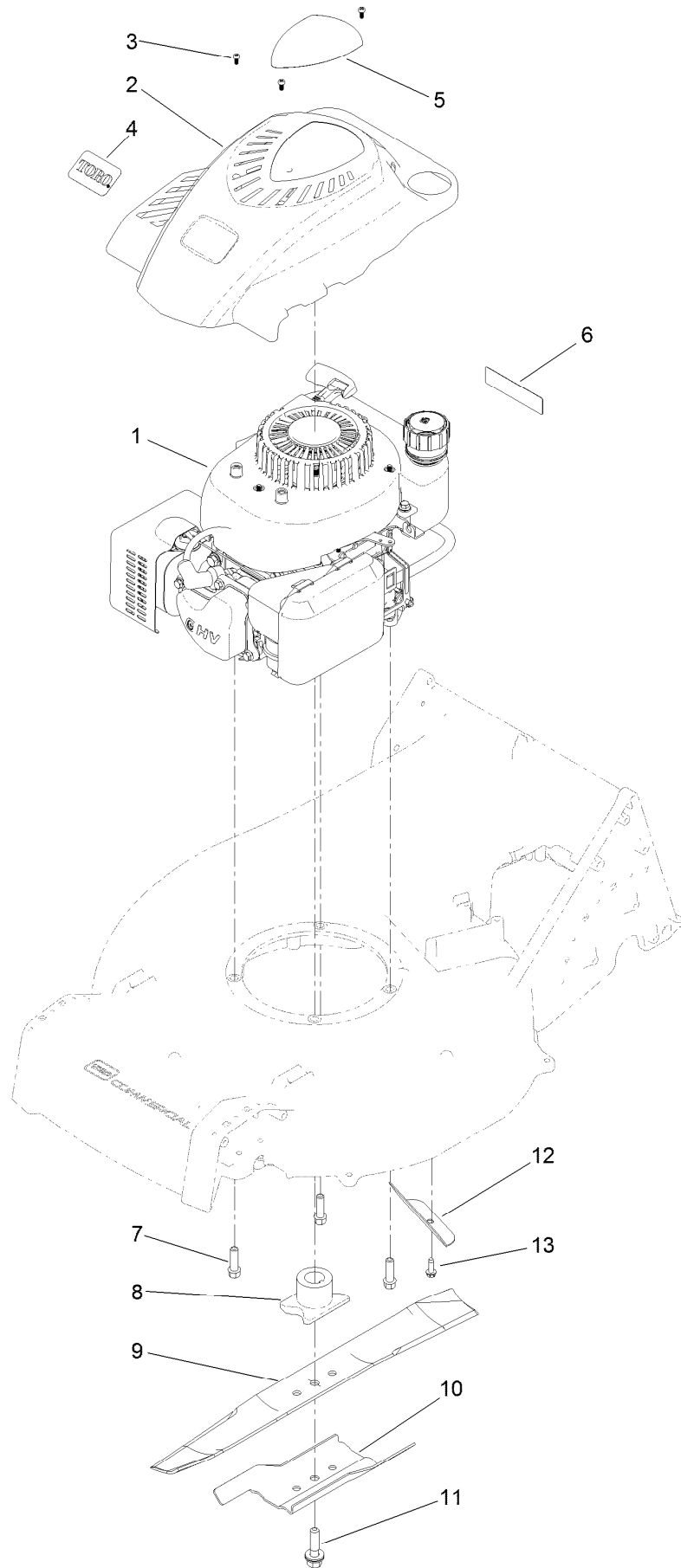
Grass Bag Assembly



Grass Bag Assembly (continued)

<i>Ref.</i>	<i>Part Number</i>	<i>Qty.</i>	<i>Description</i>	<i>Ref.</i>	<i>Part Number</i>	<i>Qty.</i>	<i>Description</i>
1	125-1017	1	Rod-Door, Bag	7	125-1008	1	Plug-Mulch
2	125-8402	1	Bag Door ASM	8	125-1007	1	Shield-Trailing
2:2	116-7583	1	Decal-Warning	9	125-8413	1	Rod-Shield, Trailing
3	125-1019	1	Spring-Torsion	10	125-1013-03	1	Bracket-Mount, LH Handle
4	1-513658	2	Bumper	11	125-1014-03	1	Bracket-Mount, RH Handle
5	121-1399-03	1	Frame-Bag	12	49-2040	4	Screw-HWHTF
6	125-1030	1	Bag-Grass				

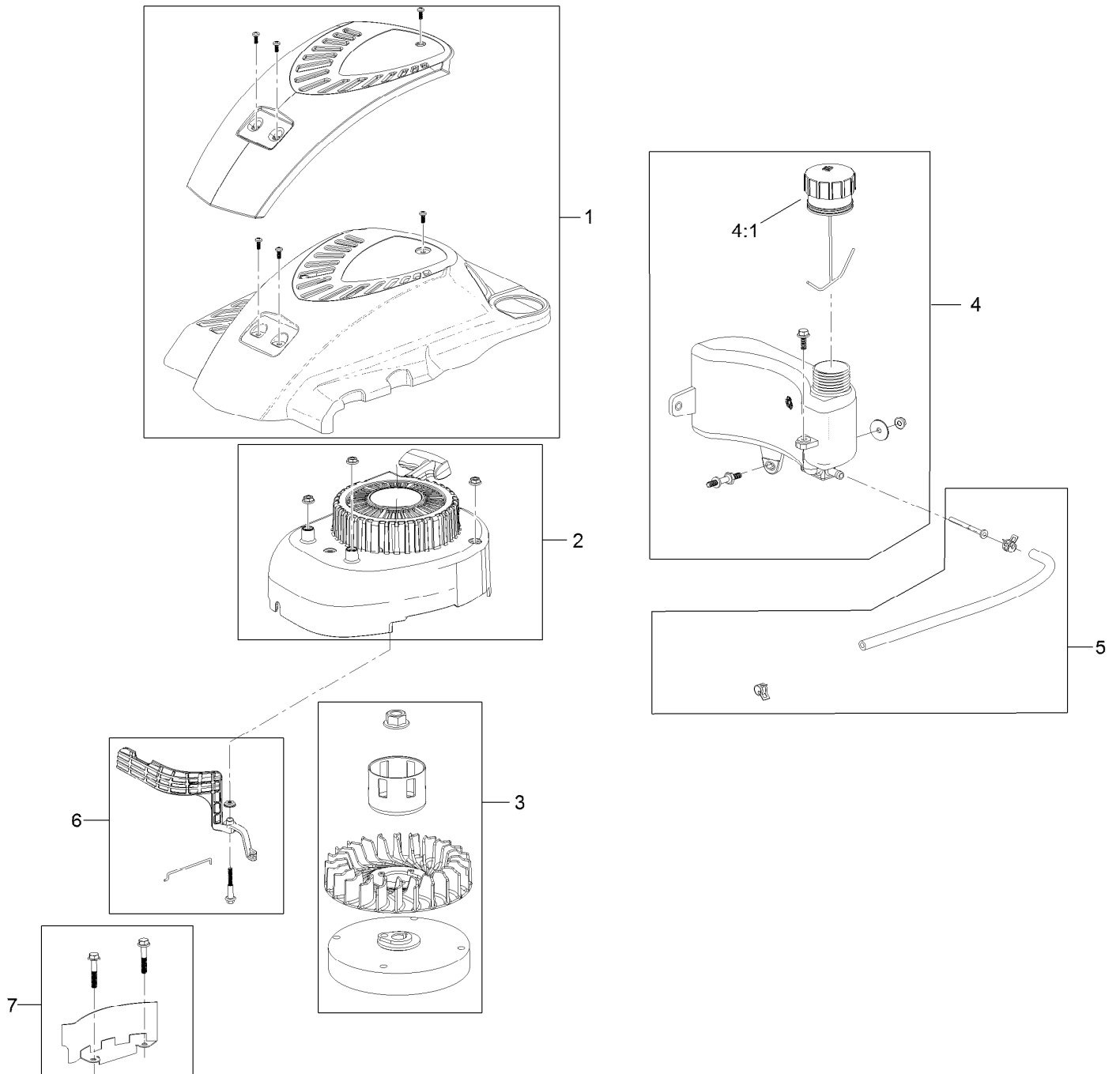
Engine and Blade Assembly



Engine and Blade Assembly (continued)

<i>Ref.</i>	<i>Part Number</i>	<i>Qty.</i>	<i>Description</i>	<i>Ref.</i>	<i>Part Number</i>	<i>Qty.</i>	<i>Description</i>
1	120-4411	1	Engine-Lc1P65Fc	8	125-1004	1	Driver-Blade
2	130-9743	1	Shroud	9	108-3762-03	1	Blade-Recycling
3	121-4155	3	Screw-PPH	10	125-1069-03	1	Accelerator-Blade
4	125-2505	1	Decal	11	125-2466	1	Bolt-Blade
5	130-9732	1	Decal-Engine	12	130-9728-03	1	Shield-Grass
6	117-2718	1	Decal-Arrester, Spark	13	49-2040	1	Screw-HWHTF
7	95-1727	3	Screw-Taptite				

Shroud, Flywheel and Fuel Tank Assembly

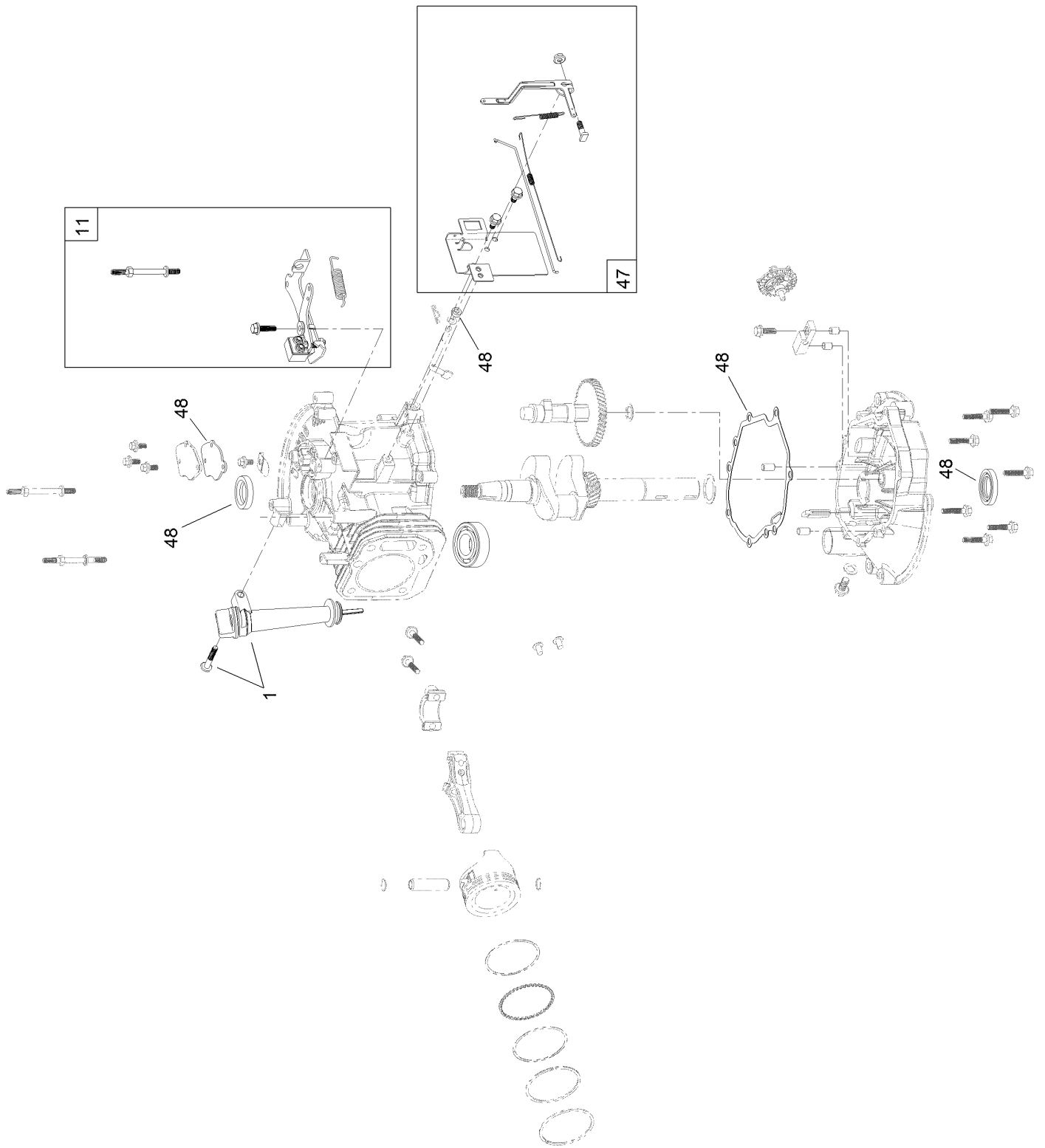


Shroud, Flywheel and Fuel Tank Assembly (continued)

<i>Ref.</i>	<i>Part Number</i>	<i>Qty.</i>	<i>Description</i>
1	119-1990	1	Shroud ASM
2	121-4160	1	Recoil And Blower Shroud Kit
3	119-1970	1	Flywheel And Fan Kit
4	121-4162	1	Fuel Tank Kit

<i>Ref.</i>	<i>Part Number</i>	<i>Qty.</i>	<i>Description</i>
4:1	121-4163	1	Cap-Fuel
5	121-4167	1	Fuel Line Kit
6	121-4168	1	Air Vane Kit
7	119-1994	1	Flywheel Shield Kit

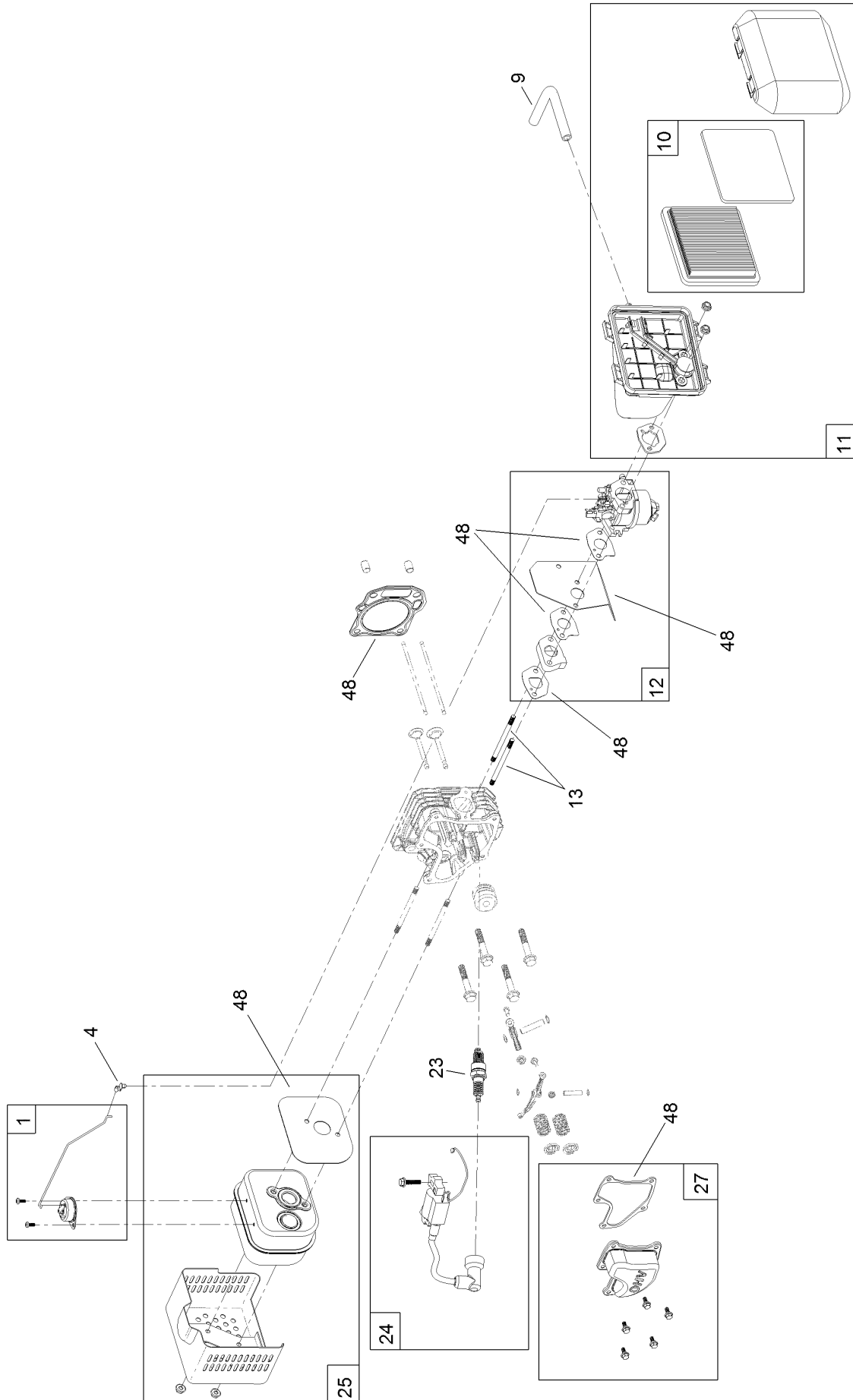
Dipstick, Brake and Governor Arm Assembly



Dipstick, Brake and Governor Arm Assembly (continued)

<i>Ref.</i>	<i>Part Number</i>	<i>Qty.</i>	<i>Description</i>	<i>Ref.</i>	<i>Part Number</i>	<i>Qty.</i>	<i>Description</i>
1	119-1903	1	Dipstick And Fill Tube Kit	47	119-1968	1	Governor Arm Kit
11	119-1991	1	Brake ASM Recoil Kit	48	121-4172	1	Seal And Gasket Kit

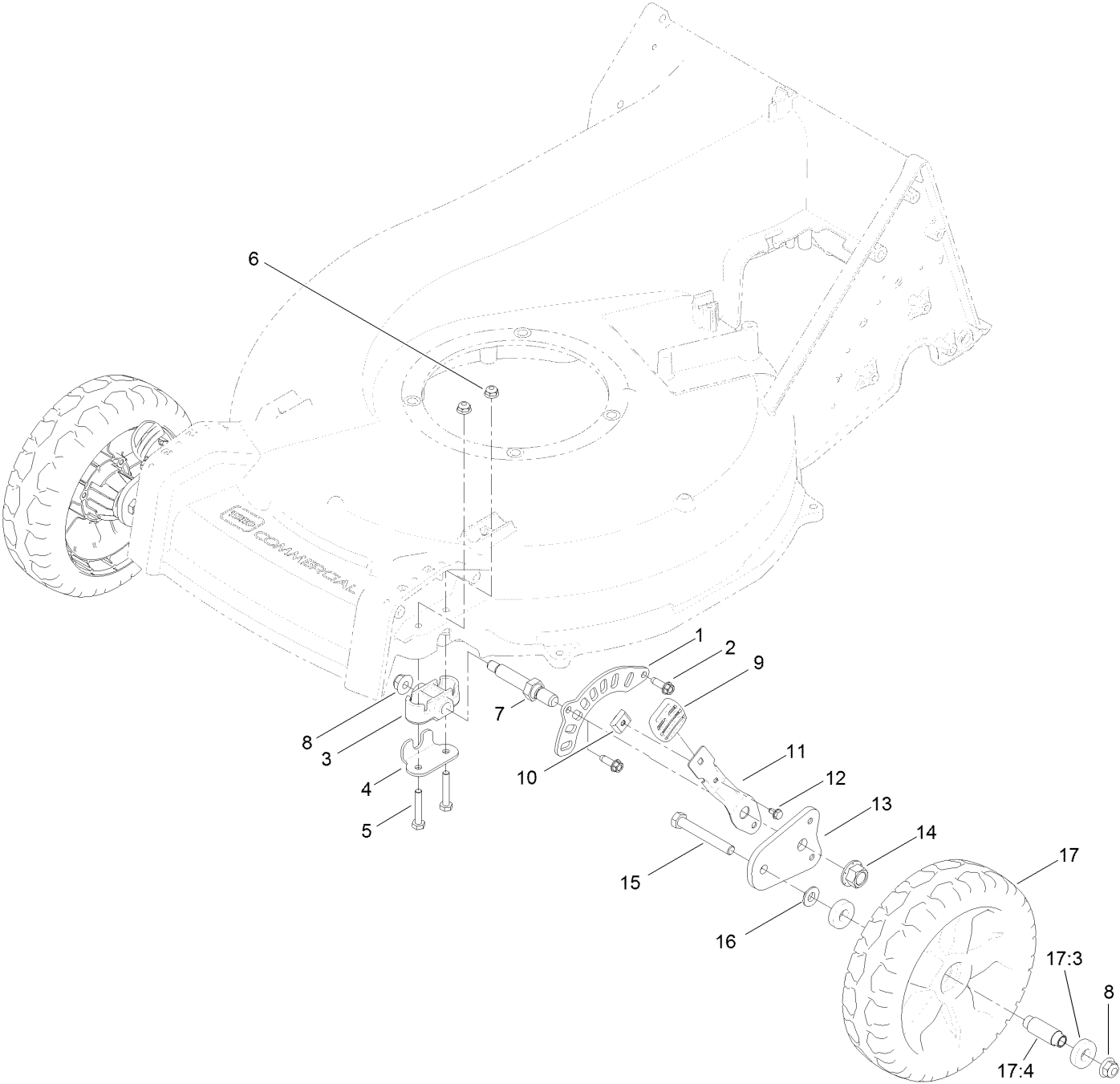
Carburetor, Muffler, Air Cleaner and Valve Cover Assembly



Carburetor, Muffler, Air Cleaner and Valve Cover Assembly (continued)

<i>Ref.</i>	<i>Part Number</i>	<i>Qty.</i>	<i>Description</i>	<i>Ref.</i>	<i>Part Number</i>	<i>Qty.</i>	<i>Description</i>
1	121-4175	1	Thermal Control Kit	13	121-0367	2	Stud-Intake
4	120-4451	1	Lock-Throttle	23	121-4199	1	Spark Plug
9	119-1902	1	Tube-Breather	24	121-4186	1	Ignition Kit
10	119-1909	1	Air Filter And Prefilter Kit	25	119-1969	1	Muffler And Shield Kit
11	121-4177	1	Air Cleaner ASM Kit	27	121-4188	1	Valve Cover Kit
12	120-4405	1	Carburetor Repair Kit	48	121-4172	1	Seal And Gasket Kit
12	121-4181	1	Carburetor Complete Kit				

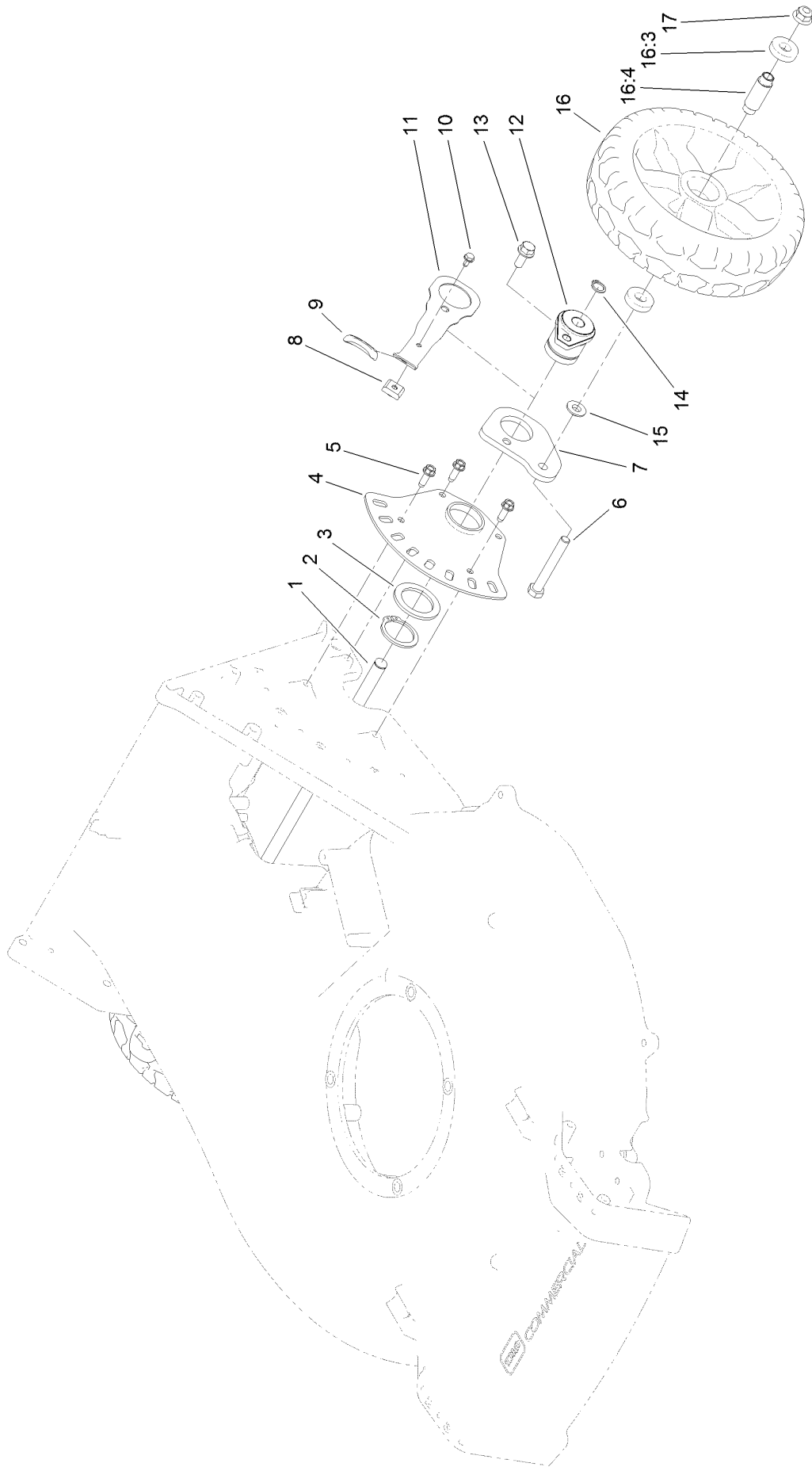
Front Wheel and Height-of-Cut and Assembly



Front Wheel and Height-of-Cut and Assembly (continued)

<i>Ref.</i>	<i>Part Number</i>	<i>Qty.</i>	<i>Description</i>	<i>Ref.</i>	<i>Part Number</i>	<i>Qty.</i>	<i>Description</i>
1	121-1439	2	Plate-HOC, Front	10	130-9690	2	Key-Arm, Spring
2	49-2040	4	Screw-HWHTF	11	121-1431-03	2	Arm-Spring
3	121-1427	2	Bushing-Axle, Front HOC	12	104-2065	2	Screw-HWH
4	121-1442	2	Retainer-Bushing, Front Axle	13	130-6420	2	Arm-Pivot, Front
5	321-9	4	Screw-HH	14	99-5107	2	Nut-Lock
6	104-7201	4	Nut-Flange, NI	15	323-13	2	Screw-HH
7	121-1428	2	Axle-Wheel	16	74-1671	2	Spacer-Cover, Wheel
8	104-8301	4	Nut-Flange, NI	17	125-1080	2	Wheel
9	125-1093	2	Knob-Lever, HOC	17:3	52-2450	2	Bearing-Wheel
				17:4	125-1077	1	Spacer

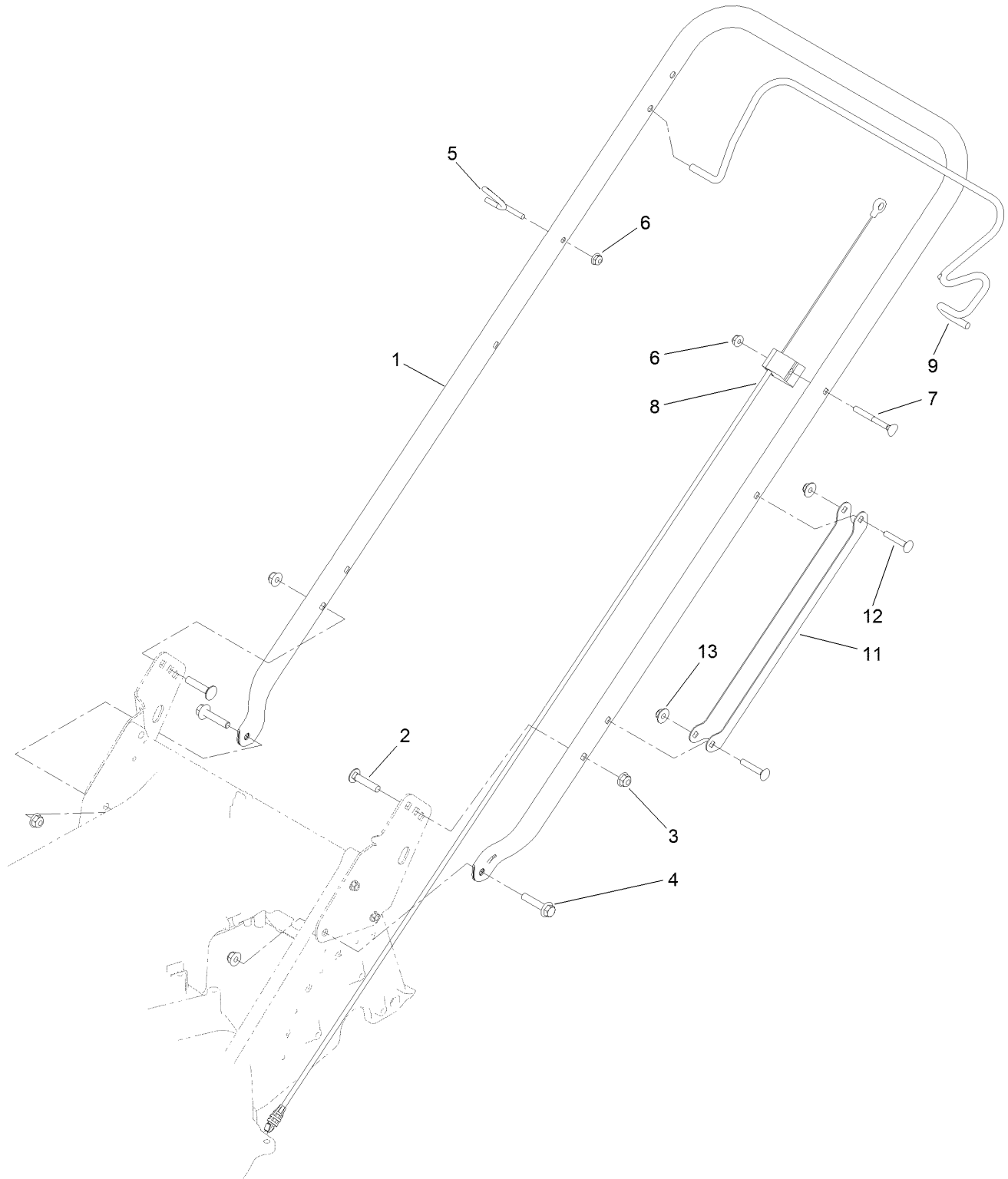
Rear Wheel and Height-of-Cut Assembly



Rear Wheel and Height-of-Cut Assembly (continued)

<i>Ref.</i>	<i>Part Number</i>	<i>Qty.</i>	<i>Description</i>	<i>Ref.</i>	<i>Part Number</i>	<i>Qty.</i>	<i>Description</i>
1	130-9727	1	Shaft-Rear, HOC	11	121-1448-03	2	Arm-Spring, Rear
2	32151-10	2	Ring-Retaining	12	130-9726	2	Retainer-Rear, HOC
3	98-1452	2	Washer-Thrust	13	130-9692	2	Screw-HWH
4	130-6422	2	Plate-HOC, Rear	14	32151-61	2	Ring-Retaining
5	49-2040	6	Screw-HWHTF	15	74-1671	2	Spacer-Cover, Wheel
6	323-13	2	Screw-HH	16	125-1080	2	Wheel
7	130-6421	2	Arm-Pivot, Rear	16:3	52-2450	2	Bearing-Wheel
8	130-9690	2	Key-Arm, Spring	16:4	125-1077	1	Spacer
9	125-1093	2	Knob-Lever, HOC	17	104-8301	2	Nut-Flange, NI
10	104-2065	2	Screw-HWH				

Handle Assembly



Handle Assembly (continued)

<i>Ref.</i>	<i>Part Number</i>	<i>Qty.</i>	<i>Description</i>	<i>Ref.</i>	<i>Part Number</i>	<i>Qty.</i>	<i>Description</i>
1	125-1015-03	1	Handle	7	92-2270	1	Screw-Handle
2	3230-4	2	Screw-CARR	8	130-9731	1	Cable-Brake
3	104-8300	4	Nut-Flange, NI	9	125-8436-03	1	Bail-Brake
4	115-1794	2	Screw-HHF	11	127-6897-03	1	Guard-Cable, Handle
5	114-2775	1	Guide-Rope	12	108-0988	2	Screw-CARR
6	104-7201	2	Nut-Flange, NI	13	114-3778	2	Nut-Lock, NI

Attachments and Accessories

For 22289 21in Heavy-Duty Recycler/Rear Bagger Lawn Mower

Product Name	Model/Part
Blade-Bagging, 21in	125-1072-03
Cup-Anti Scalp.....	125-8440
Engine Guard Kit	130-9700
Deck Side Guard Kit	130-9701

Notes:



Count on it.