



Proline

Recycler[®] /Rear Bagger

Model No. 22161 – 8900001 & Up

Parts Catalog

ORDERING REPLACEMENT PARTS

To order replacement parts, please supply: the part number, the quantity, and the description of each part desired.

Contents

Description	Page	Description	Page
Housing Assembly	1-2	Rear Wheel & Tire Assembly	9
Engine & Blade Assembly	3	Engine GTS-200	10-18
Fuel Tank Assembly	4	Toro Part Number Index	19-22
Handle Assembly	5	Maintenance	23-25
Gear Case & Rear Wheel Assembly	6		
Gear Case Assembly	7	Note:	
Grass Bag Assembly No. 98-9220	8		

Accessories

Description	Model / Parts No.	Description	Model / Parts No.
Side Discharge Kit	Model No. 59199		

Part Description Abbreviations

Part descriptions in this catalog may include the following abbreviations.

Abbreviation	Meaning	Abbreviation	Meaning
AR	as required	HWHTF	hex washer head thread forming
ASM	assembly	INC	incorporated
CARR	carriage	LH	left hand
DEG	degrees	PH	pan head
FH	flat head	PPH	Phillips pan head
GA	gauge	PTO	power take off
HF	hex flange	RH	right hand
HFV	hex flange washer	SFH	slotted fillister head
HH	hex head	SH	square head
HHF	hex head flange	SHWH	slotted hex washer head
HHST	hex head self tapping	SPH	slotted pan head
HJ	hex jam	STD	standard
HOC	height-of-cut	TAP	self tapping
HS	hex socket	TH	truss head
HSBH	hex socket button head	TTH	Torx truss head
HSFH	hex socket flat head	WH	wing head
HSR	hex socket head		
HWH	hex washer head		

Important Format Explanations

This catalog uses special formats to convey information in illustrations and parts lists. Specifically, one format is used in conjunction with service assemblies and another with quantities associated with reference numbers.

Service Assemblies

Parts within service assemblies have reference numbers in the form $X:Y$. X is the reference number of the service assembly and Y is a sequential number unique to each part within the service assembly.

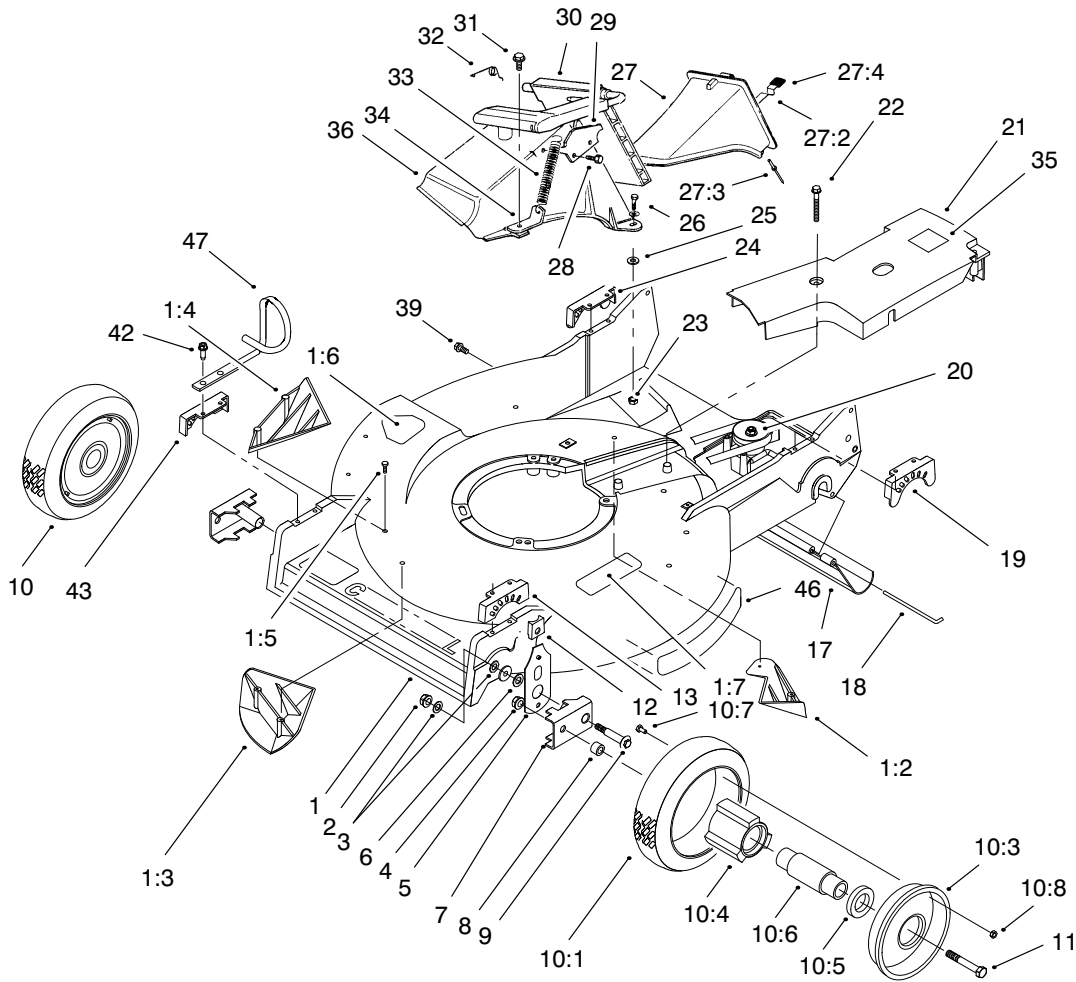
For example, a wheel assembly might be identified by reference number 6, the tire by 6:1, the valve by 6:2, and the wheel by 6:3. When you order the assembly identified by reference number 6, you receive all parts identified by reference numbers 6:1, 6:2, and 6:3. However, you may also order any part individually.

Reference numbers of this type appear in part lists and as callouts in illustrations.

Reference Numbers with Quantities

Illustrations may have a quantity in parentheses next to a reference number, in the form $X (Y)$. X is the reference number. Y in parentheses is the quantity of the part identified by the reference number.

For example, the illustration callout 4 (2) indicates that two parts are used in that instance.



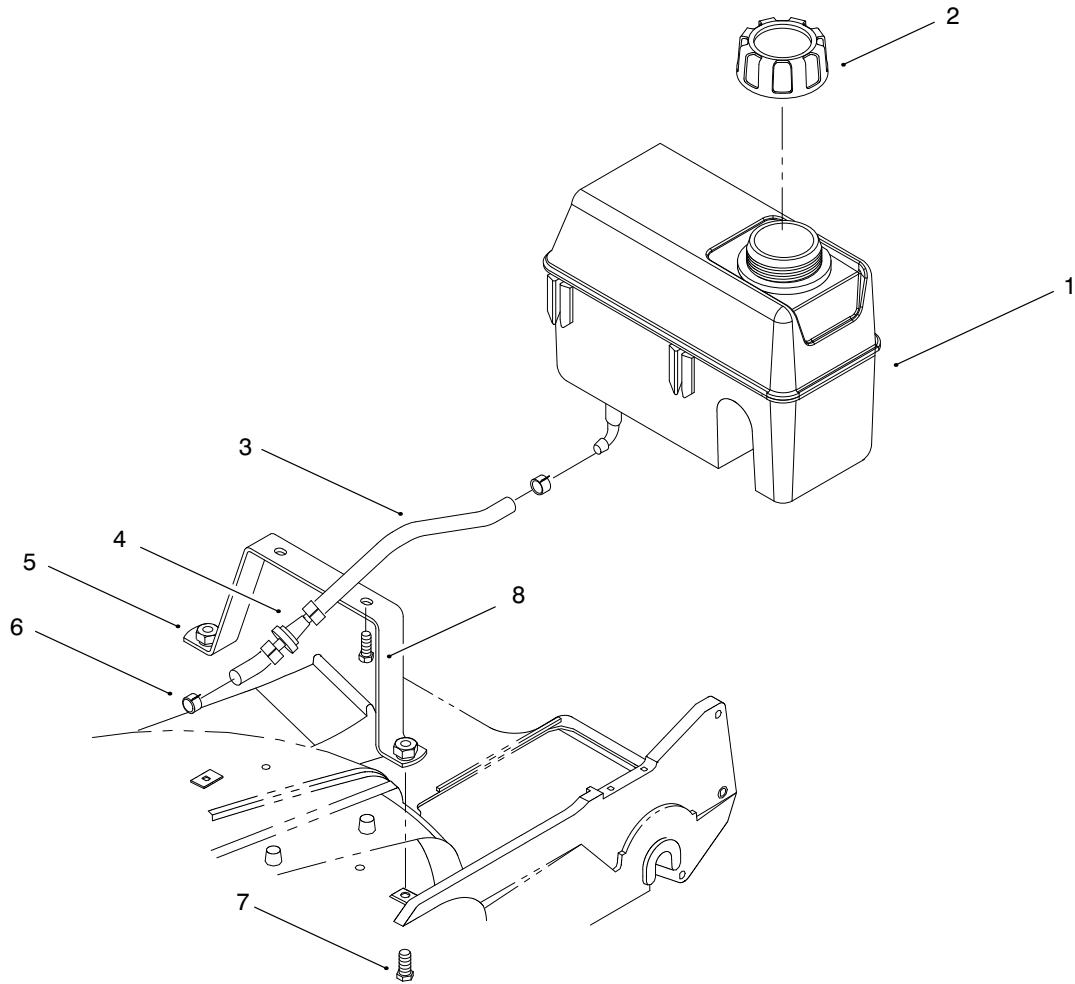
Sheet No.:2

Housing Assembly

Ref. No.	Part No.	Qty.	Description
1	98-7139	1	Housing-Commercial Mach)
1:2	92-1750	1	Plate-Kicker Rear
1:3	92-1720	1	Kicker-RH
1:4	92-1730	1	Kicker-LH
1:5	32144-111	6	Screw - PPH
1:6	39-5770	1	Decal-Danger
1:7	71-1280	1	Decal-Warning
2	3296-6	2	Nut-Lock
3	40-1940	4	Washer
4	32152-2	2	Nut-Lock HH
5	66-7560	2	ASM-Arm
6	257-3	2	Washer-Thrust
7	61-8300	2	ASM-Arm
8	52-2480	2	Spacer
9	27-6232	2	Bolt-Wheel HH
10	53-7720	2	ASM-Wheel & Tire
10:1	53-7740	2	Tire-8.00
†10:2		2	ASM-Wheel
10:3	53-7780	4	Plate-Wheel Half
10:4	52-2410	2	Hub-Bearing Support
10:5	52-2450	4	Ball Bearing
10:6	52-2440	2	Spacer-Bearing
10:7	321-2	8	Screw-HH
10:8	3296-42	8	Nut-Lock
11	323-12	2	Screw

Ref. No.	Part No.	Qty.	Description
12	25-7740	2	Knob-Arm
13	49-8760	1	Quadrant-Front
17	44-0580	1	Shield-Trailing
18	33-3208	1	Rod-Shield
19	49-8740	1	Quadrant-Rear
20	74-1860	1	ASM-Gearcase
21	98-3214	1	Cover-Belt
22	37-7260	2	Screw-TAP
23	3296-42	2	Nut-Lock
24	49-8750	1	Quadrant-Rear
25	3256-22	2	Washer-Flat
26	321-7	2	Screw-Cap
27	77-0500	1	ASM-Plug
27:2	76-4640	1	Latch Discharge Plug
27:3	3295-35	1	Rivet Solid
27:4	76-4650	1	Grip Latch
28	46-8090	2	Screw-Tapping
29	93-3154	1	Plate-Latch
30	93-7351	1	ASM-Door
31	46-6811	1	Screw-HWH
32	80-3770	1	Retainer-Door
33	76-4660	1	Spring-Extension
34	71-9350	1	Spring-Bracket
35	52-2620	1	Label-Grease
36	82-9152	1	Chute-Discharge
39	46-6810	1	Screw HWH

† Included in a service kit or in an assembly

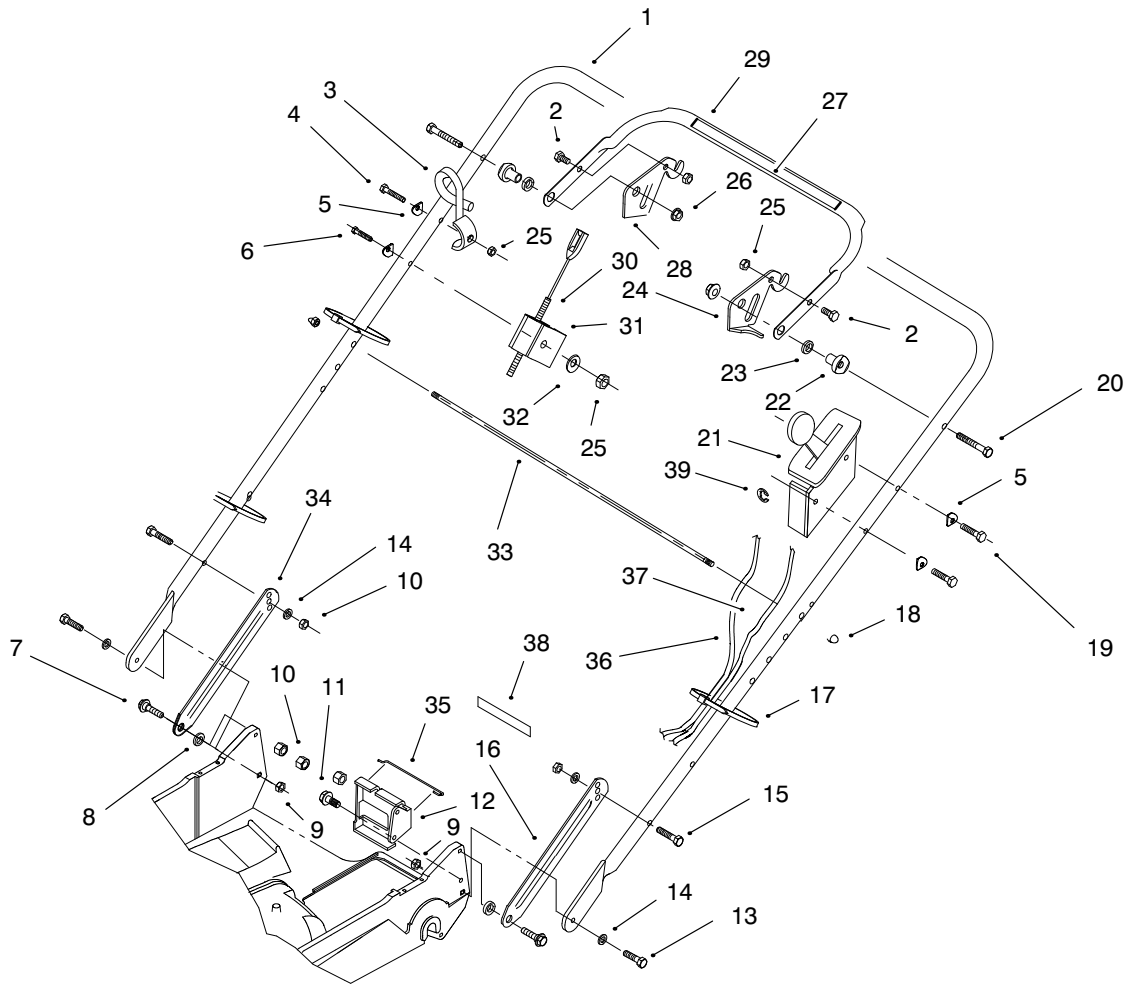


Sheet No.:4

Fuel Tank Assembly

Ref. No.	Part No.	Qty.	Description
1	93-3166	1	Tank-Gas
2	55-3570	1	Cap-Fuel
3	51-3210	2	Fuel Line
4	71-9280	1	Filter-Fuel
5	84-9170	1	Wa-Base
6	2412-95	4	Clamp
7	323-6	2	Screw-HH
8	46-8091	2	Screw-Tapping

Ref. No.	Part No.	Qty.	Description

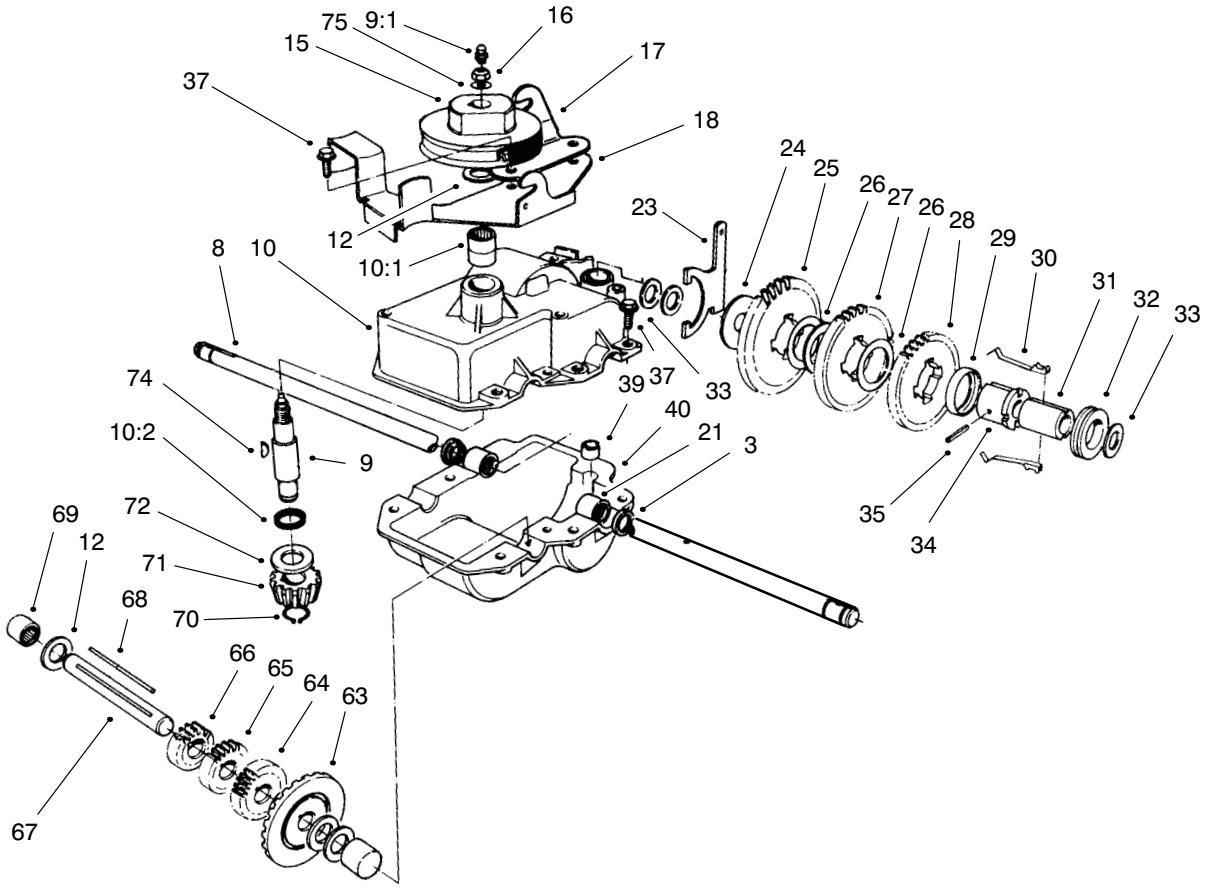


Sheet No.:5

Handle Assembly

Ref. No.	Part No.	Qty.	Description
1	98-2000	1	Handle
2	321-4	2	Screw-HH
3	46-8081	1	Guide-Rope
4	321-9	1	Screw-HH
5	3-7501	4	Washer-Curved
6	321-15	1	Screw-HH
7	27-7210	2	Screw-Shoulder
8	3-3287	2	Spacer
9	3296-47	2	Nut-Lock
10	3296-29	4	Nut-Lock
11	32144-70	1	Screw-TAP
12	74-1741	1	Bracket-Adjust
13	322-6	2	Screw-HH
14	3290-456	4	Washer-Lock
15	322-7	2	Screw-HH
16	84-8361	1	Latch-Handle
17	3290-378	3	Tie-Cable
18	32111-7	2	Nut-Cap
19	321-13	2	Screw-HH
20	322-11	2	Screw-HH
21	98-2001	1	Bracket-Throttle Control
22	49-1630	2	Spacer-Support
23	256-276	2	Spacer-Nylon
24	66-5350	1	Lever-Control
25	3296-42	4	Nut-Lock

Ref. No.	Part No.	Qty.	Description
26	3296-58	2	Nut-Flange
27	98-7116	1	Decal-Control
28	77-5270	1	Lever-Control
29	61-8270	1	Bar-Control
30	93-3661	1	Cable-Brake
31	46-6980	1	Support-Cable
32	3256-22	1	Washer-Flat
33	48-2810	1	Rod-Support
34	84-8401	1	Latch-Handle
35	46-7030	1	Retainer-Cable
36	74-1791	1	Cable-Traction
37	98-2047	1	Cable-Throttle
38	74-1970	1	Decal-Drive
39	32151-86	2	Ring-E



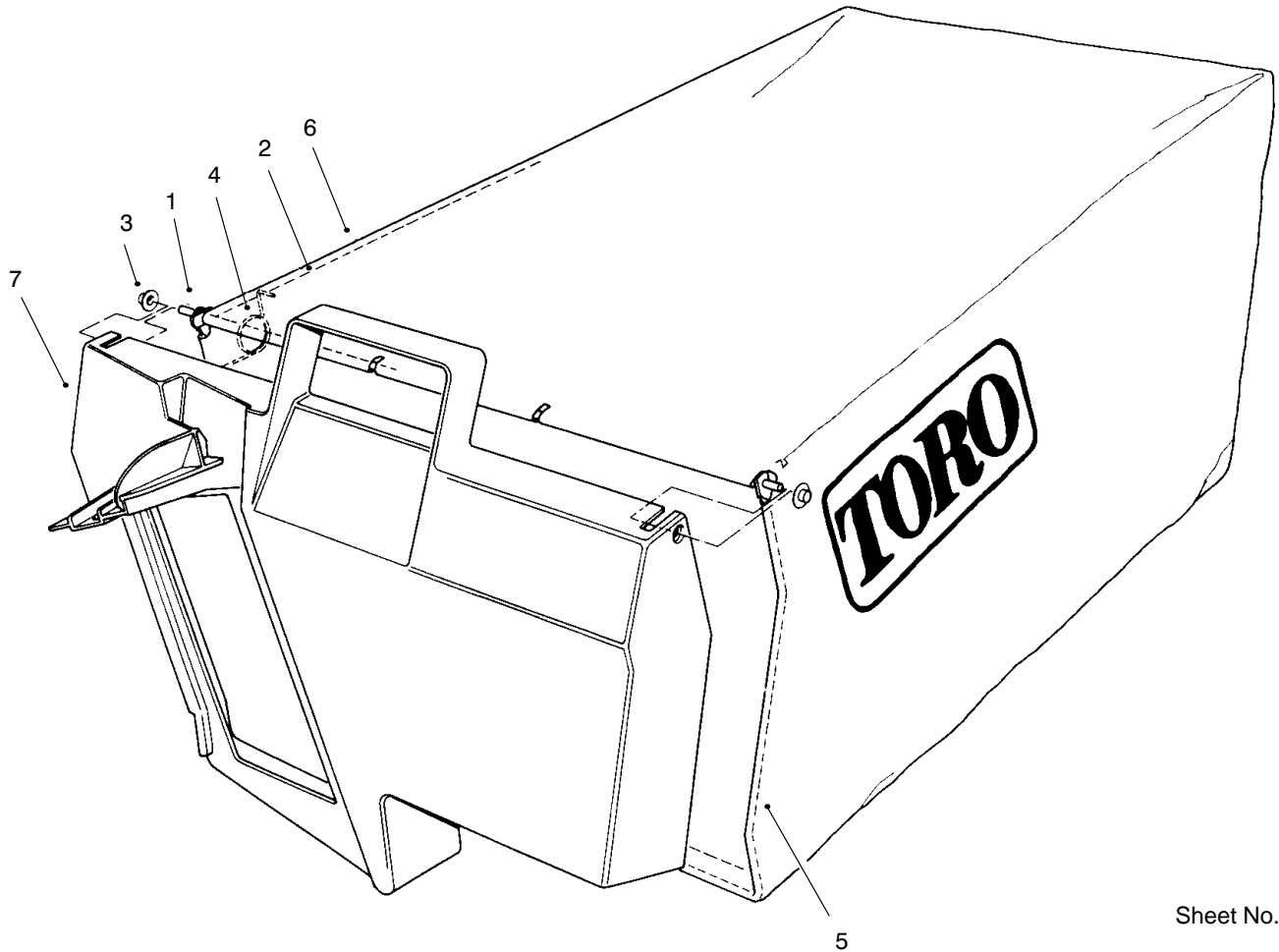
Sheet No.:100

Gear Case Assembly

Ref. No.	Part No.	Qty.	Description
3	48-2060	2	Bearing-Needle
8	74-1890	1	Shaft-Output
9	13-5149	1	Shaft-Input
9:1	302-63	1	Fitting-Grease
10	13-9739	1	Upper Case Assembly
10:1	47-7270	2	Bearing-Needle
10:2	47-7260	1	Seal
12	36-4792	4	Washer-Thrust
15	39-6740	1	Pulley
16	3296-5	1	Nut-Lock
17	74-1750	1	Bracket-Traction Engage
18	49-8461	1	Bracket-Guide Belt
21	47-6730	2	Seal
23	60-8870	1	Yoke-Shift
24	29-9690	1	Washer-Flat
25	46-3560	1	Gear-52t
26	36-4770	3	Spacer-Gear
27	29-9271	1	Gear-42t
28	42-4740	1	Gear-38t
29	55-8020	1	Retainer-Key
30	29-9330	2	Key-Shift
31	39-6720	1	Sleeve
32	29-9340	1	Collar-Shift
33	36-4780	3	Washer-Flat
34	55-8010	1	Sleeve-Gear

Ref. No.	Part No.	Qty.	Description
35	3285-19	1	Pin-Groove
37	49-2040	6	Screw-Self Tapping
39	29-9570	1	Bushing-Yoke
40	74-1920	1	Case-Lower
63	74-1760	1	Gear-Bevel
64	39-6650	1	Gear-18t
65	46-3550	1	Gear-14t
66	46-3540	1	Gear-12t
67	53-7950	1	Shaft-Intermediate
68	39-7842	1	Key-Square
69	252-103	2	Bearing-Closed
*70	32151-57	1	Ring-Retaining
71	39-6660	1	Pinion-bevel
72	47-2910	1	Washer-Thrust
74	3257-1	2	Key-Woodruff
75	3256-45	1	Washer-Flat
*	74-1861	1	Gear Case Assembly Complete

* Not illustrated



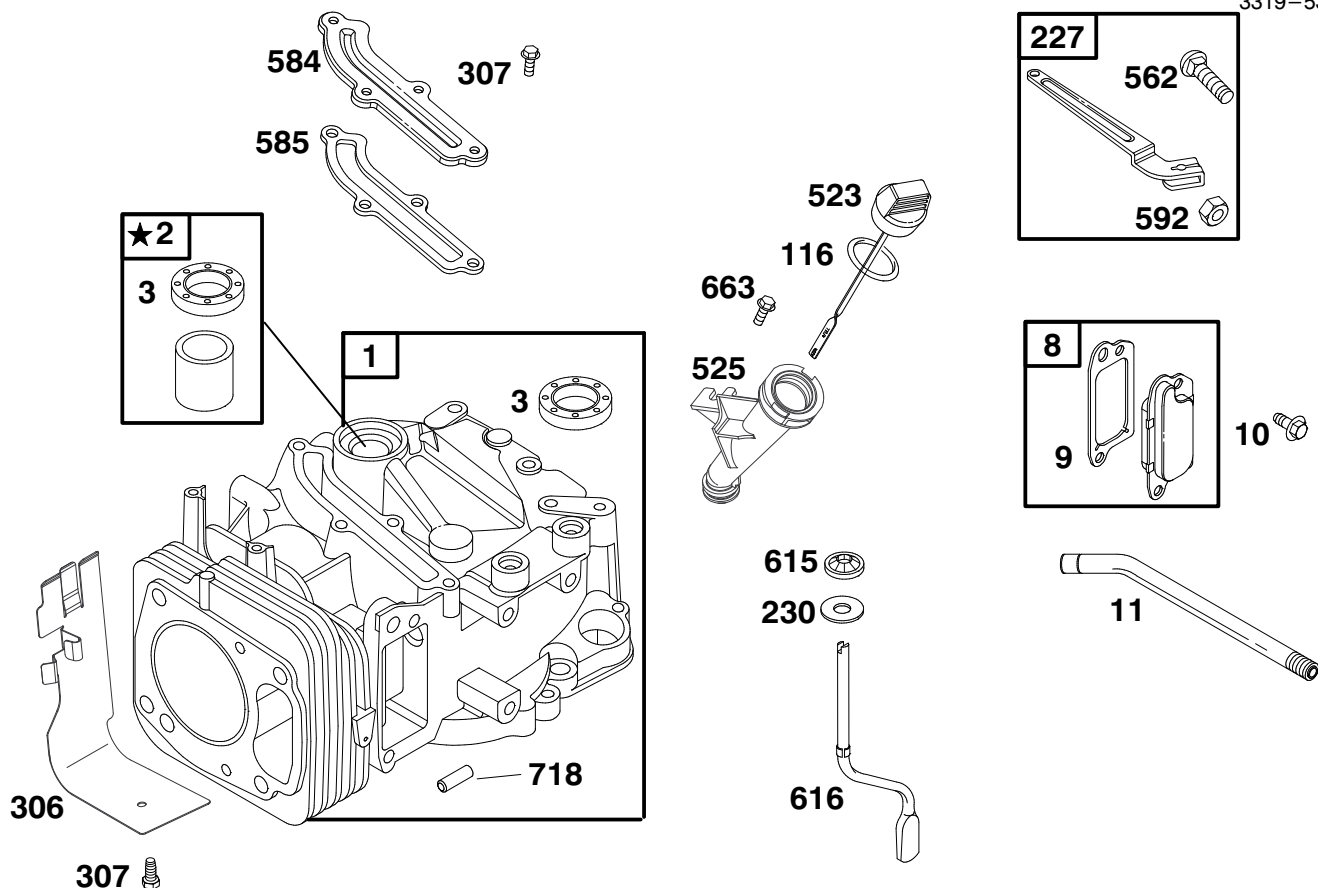
Sheet No.:300

Grass Bag Assembly No. 98-9220

Ref. No.	Part No.	Qty.	Description
*0	98-9220	1	Grass Bag-Proline
1	33-4820	1	Hinge-Door
2	42-4030	1	Frame-Bag
3	3290-422	2	Nut-Push
4	36-6910	2	Spring
5	42-4020	1	Frame-Bag
6	98-9222	1	Bag-Grass
7	48-2840	1	Door-Bag

Ref. No.	Part No.	Qty.	Description

* Not illustrated



★ REQUIRES SPECIAL TOOLS TO INSTALL. SEE REPAIR INSTRUCTION MANUAL.

Assemblies include all parts shown in frames.

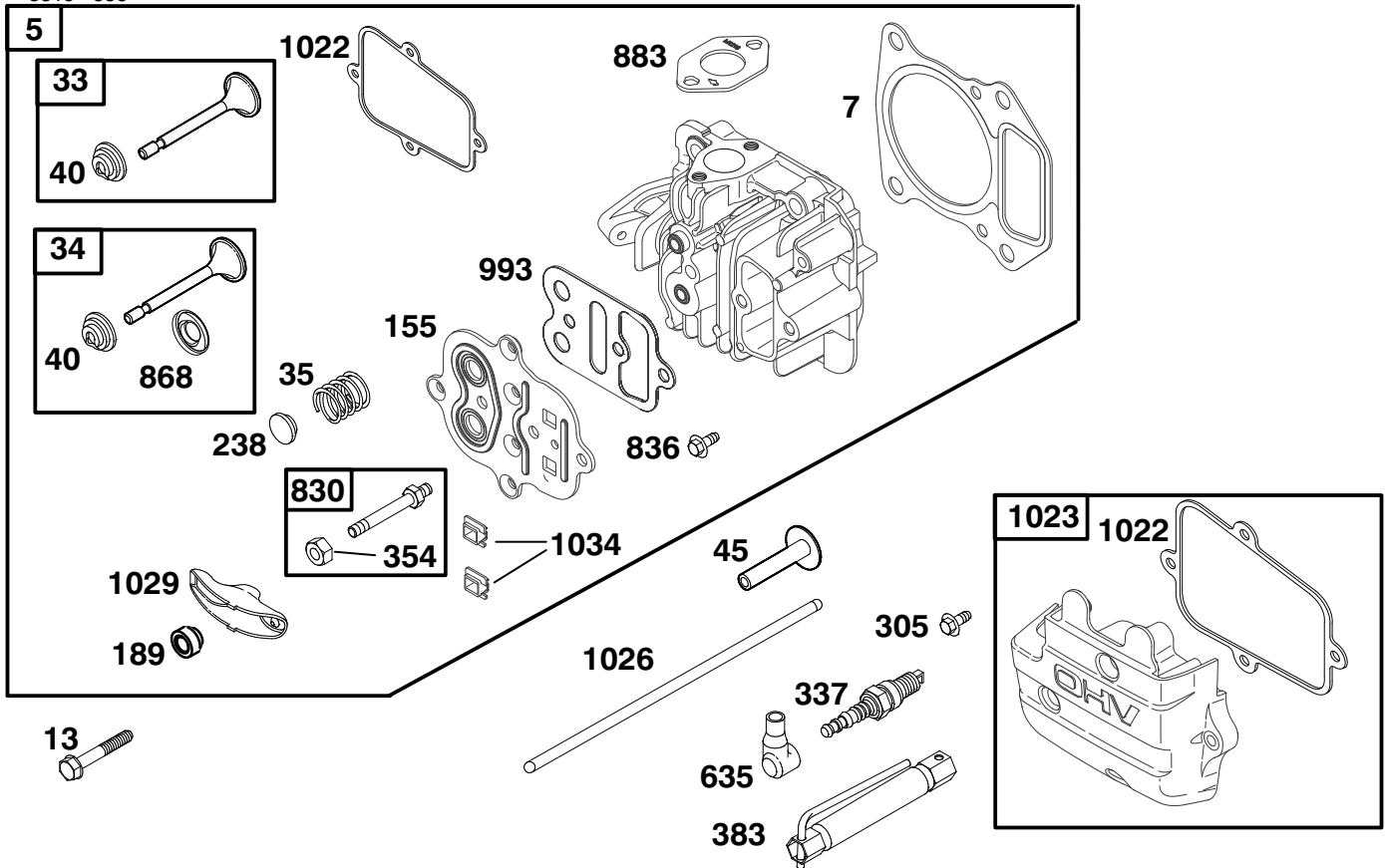
ENGINE GTS-200

Ref. No.	Part No.	Description	No. Used
1	99-0900	Cylinder Assembly	1
2	99-0911	Bushing	1
★3	99-0912	Seal - Oil	1
8	77-9260	Breather Assy.	1
†★9	99-0913	Gasket - Breather	1
10	99-0914	Screw - Hex.	1
11	99-0915	Tube - Breather	1
★116	99-0916	Seal - O Ring	1
227	99-0917	Lever Assembly - Gov.	1
230	99-0918	Washer - Gov. Crank	1
306	99-0919	Shield - Cylinder	1

Ref. No.	Part No.	Description	No. Used
307	99-0920	Screw - Hex.	1
523	77-7260	Dipstick	1
525	99-0906	Tube - Oil Filler	1
562	99-0921	Screw - Hex.	1
584	99-0922	Baffle - Cylinder	1
★585	99-0923	Gasket - Breather	1
592	99-0924	Nut - Hex.	1
615	99-0925	Fastener	1
616	99-0926	Crank - Governor	1
663	99-0927	Screw - Hex.	1
718	99-0928	Dowel - Sleeve	1

★ Included in Gasket Set - Part No. 99-0902

† Included in Valve Overhaul Gasket Set - Part No. 99-0904



Assemblies include all parts shown in frames.

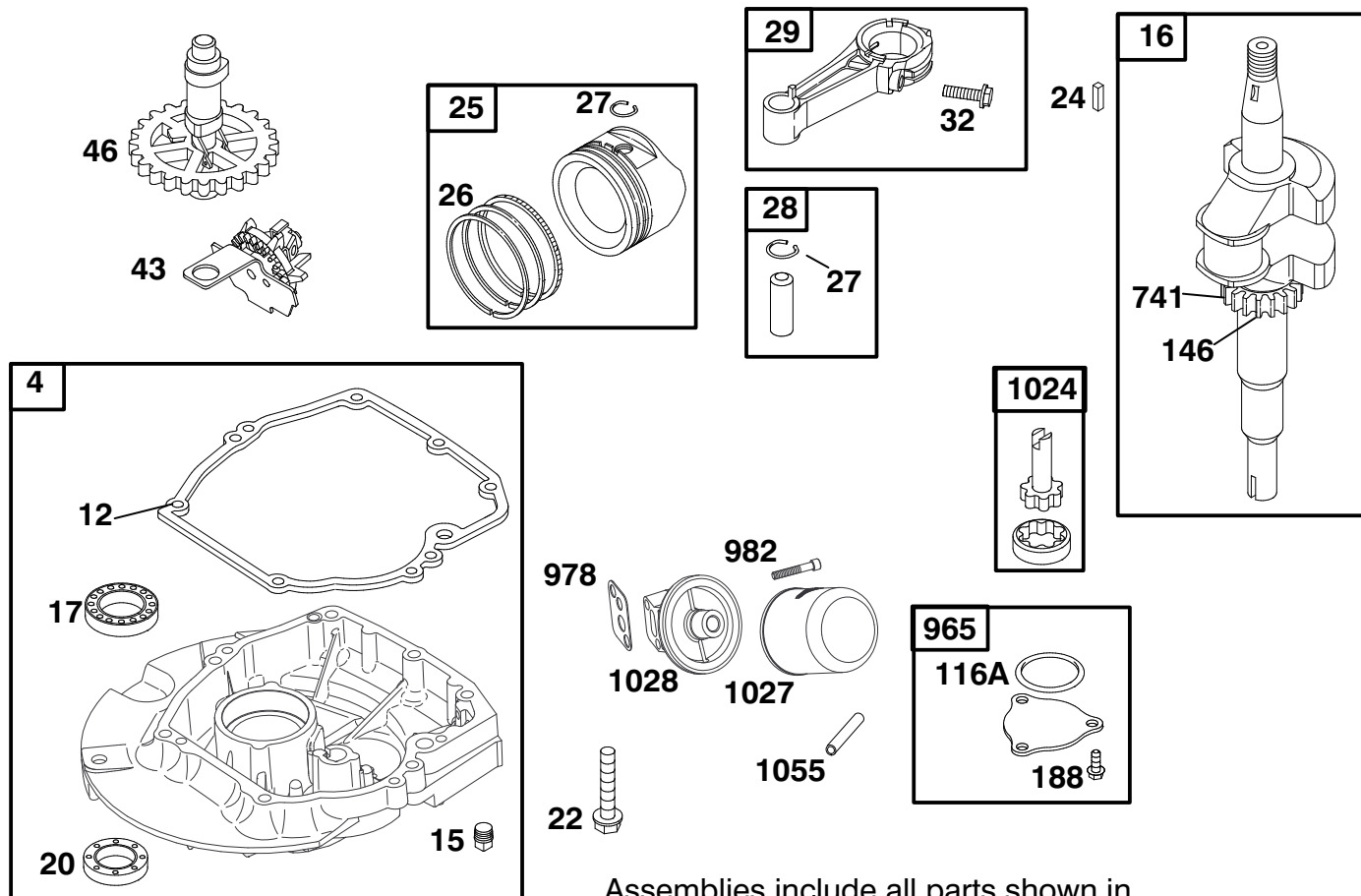
ENGINE GTS-200

Ref. No.	Part No.	Description	No. Used
5	99-0929	Head - Cylinder	1
†★7	99-0930	Gasket - Cylinder Head	1
13	99-0931	Screw - Hex.	1
33	99-0932	Valve - Exhaust	1
34	99-0933	Valve - Intake	1
35	99-0934	Spring - Valve	1
40	99-0935	Retainer - Valve Spring	1
45	99-0936	Tappet - Valve	1
155	99-0938	Plate - Cylinder Head	1
189	99-0939	Ball - Rocker Arm	1
238	99-0940	Cap - Valve	1
305	99-0942	Screw - Hex.	1
337	99-0943	Plug - Spark	1
354		Nut - Hex. (Sold in Kit Only).	1

Ref. No.	Part No.	Description	No. Used
383	99-0944	Wrench - Spark Plug	1
635	77-9190	Elbow - Spark Plug	1
830	99-0945	Stud - Rocker Arm	1
836	99-0941	Screw - Hex.	1
†★868	99-0946	Seal - Valve	1
†★883	99-0947	Gasket - Exhaust	1
†★993	99-0948	Gasket - Plate	1
†★1022	99-0907	Gasket - Rocker Cover	1
1023	98-9211	Cover - Rocker	1
1026	99-0949	Rod - Push	1
1029	99-0950	Arm - Rocker	1
1034	99-0951	Guide - Push Rod	1

★ Included in Gasket Set - Part No. 99-0902

† Included in Valve Overhaul Gasket Set - Part No. 99-0904



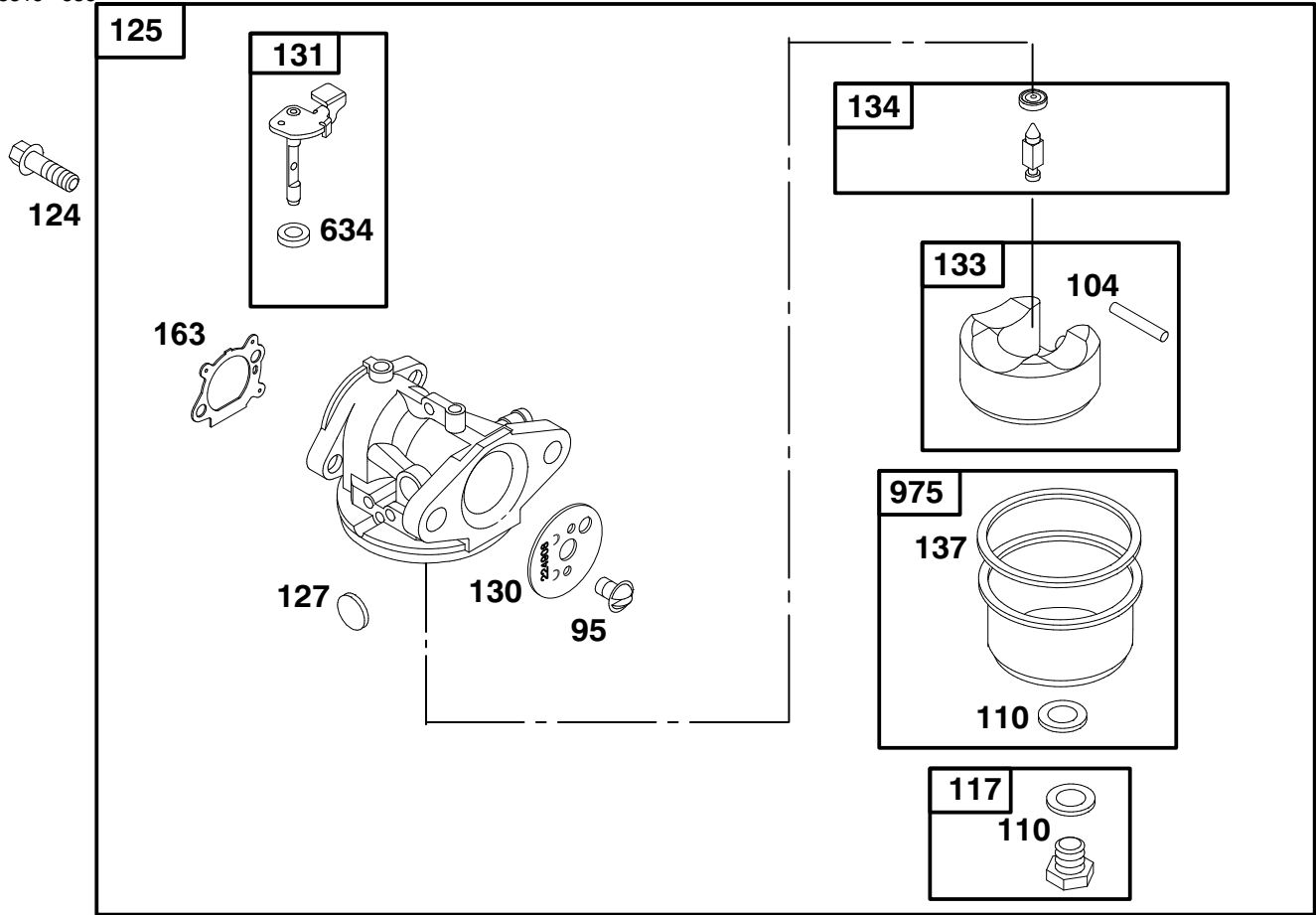
Assemblies include all parts shown in frames.

ENGINE GTS-200

Ref. No.	Part No.	Description	No. Used
4	99-0980	Sump - Engine	1
★12	99-0953	Gasket - Crankcase	1
15	99-0954	Plug - Oil Drain	1
16	98-9214	Crankshaft	1
17	99-1031	Bearing - Ball	1
★20	99-0955	Seal - Oil	1
22	99-0956	Screw - Hex. Note: 99-1040 Screw - Hex. (One (1) Used in Hole Nearest Breather)	1
24	99-0957	Key - Flywheel	1
25	99-0958	Piston Assy. (Standard)	1
26	99-0959	Ring Set (Standard)	1
27	99-0960	Lock - Piston Pin	1
28	99-0961	Pin - Piston (Standard)	1

Ref. No.	Part No.	Description	No. Used
29	99-0962	Rod - Connecting	1
32	99-0963	Screw - Connecting Rod	1
43	99-0937	Governor/Oil Slinger	1
46	99-0965	Gear - Cam	1
116A	99-1032	Seal - O-Ring	1
146	99-0966	Key - Timing	1
188	99-1033	Screw - Hex.	1
741	99-0967	Gear - Timing	1
965	99-1034	Cover - Oil Pump	1
978	99-1035	Gasket - Adapter	1
982	99-1036	Screw - Soc. Hd.	1
1024	99-1037	Pump - Oil	1
1027	98-9217	Filter - Oil	1
1028	99-1038	Adapter - Oil Filter	1
1055	99-1039	Tube - Oil Pump	1

★ Included in Gasket Set - Part No. 99-0902



Assemblies include all parts shown in frames.

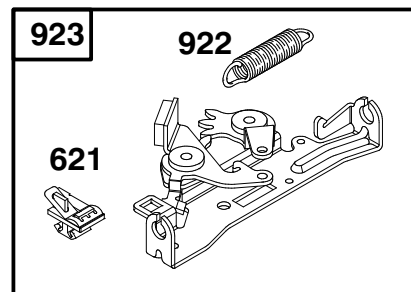
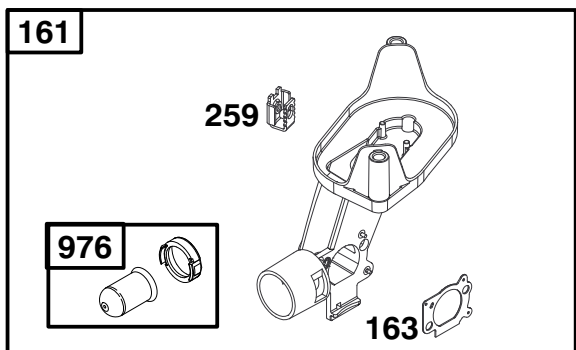
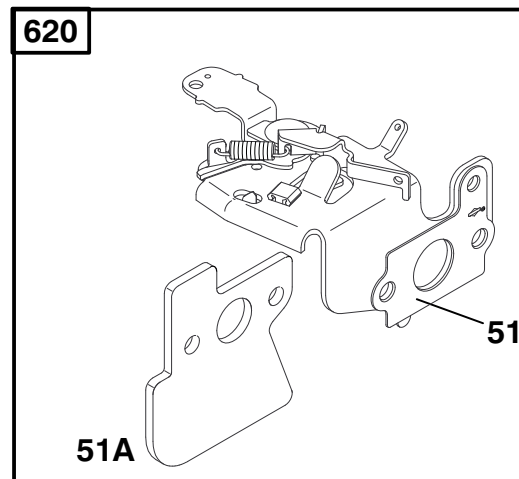
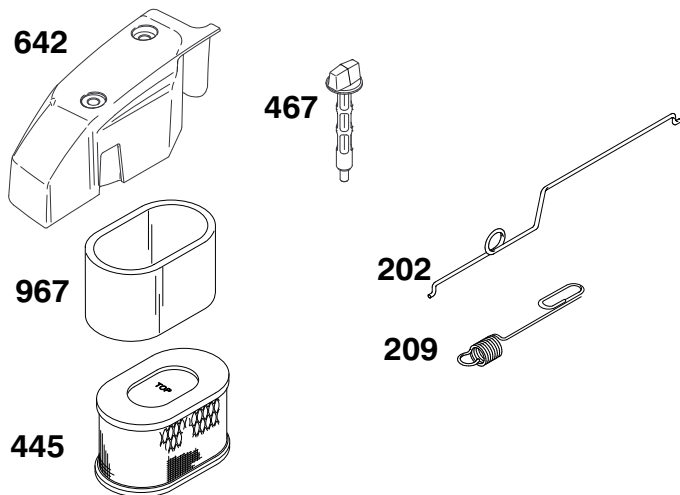
ENGINE GTS-200

Ref. No.	Part No.	Description	No. Used
95	99-0969	Screw - Slotted	1
●104	99-0970	Pin - Float Hinge	1
◆110		Washer - Bowl (Sold in Kit Only)	1
117	99-0971	Jet - Main (Std.) Note: 99-1041 Jet - Main (High Altitude)	1
124	99-0972	Screw - Shoulder	1
125	99-0973	Carburetor	1
●127		Plug - Welch (Sold in Kit Only).	1

Ref. No.	Part No.	Description	No. Used
130	99-0974	Valve - Throttle	1
131	99-0975	Shaft - Throttle	1
133	77-8170	Float - Carburetor	1
●134	77-8110	Valve - Needle	1
◆137		Gasket - Bowl (Sold in Kit Only).	1
◆★163	99-0976	Gasket - Air Cleaner	1
◆634		Washer - Foam (Sold in Kit Only).	1
975	99-0977	Bowl - Float	1

- Included in Carburetor Kit - Part No. 99-0901
- ◆ Included in Carburetor Gasket Set - Part No. 99-0903

- ★ Included in Gasket Set - Part No. 99-0902



Assemblies include all parts shown in frames.

ENGINE GTS-200

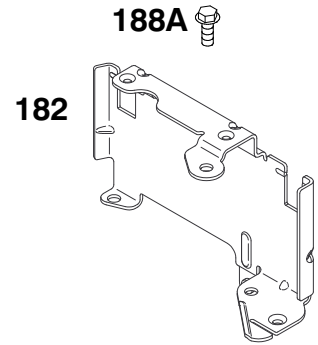
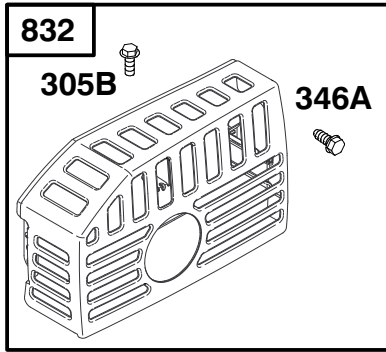
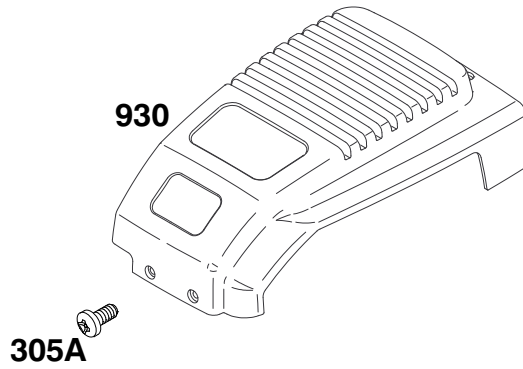
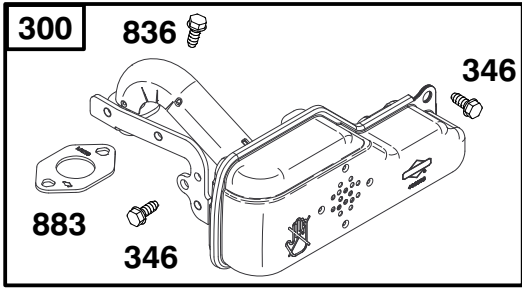
Ref. No.	Part No.	Description	No. Used
51	99-0968	Gasket - Intake	1
51A	99-0978	Gasket - Intake	1
161	99-0979	Base - Air Cleaner/Primer	1
◆◆★163	99-0976	Gasket - Air Cleaner	1
202	99-0981	Link - Governor	1
209	99-0982	Spring - Governor	1
258	99-0983	Screw - Hex.	1
259	99-0984	Grommet	1
445	98-9212	Filter - Air	1

Ref. No.	Part No.	Description	No. Used
467	98-9208	Knob	1
620	99-0985	Bracket - Control	1
621	99-0986	Switch - Stop	1
642	98-9207	Cover - Air Cleaner	1
922	99-0987	Spring - Brake	1
923	99-0988	Brake Assembly	1
967	99-0989	Filter - Air	1
971	99-0990	Screw - Hex.	1
976	99-0991	Primer - Carburetor	1

◆ Included in Carburetor Kit - Part No. 99-0901

◆◆ Included in Carburetor Gasket Set - Part No. 99-0903

★ Included in Gasket Set - Part No. 99-0902



Assemblies include all parts shown in frames.

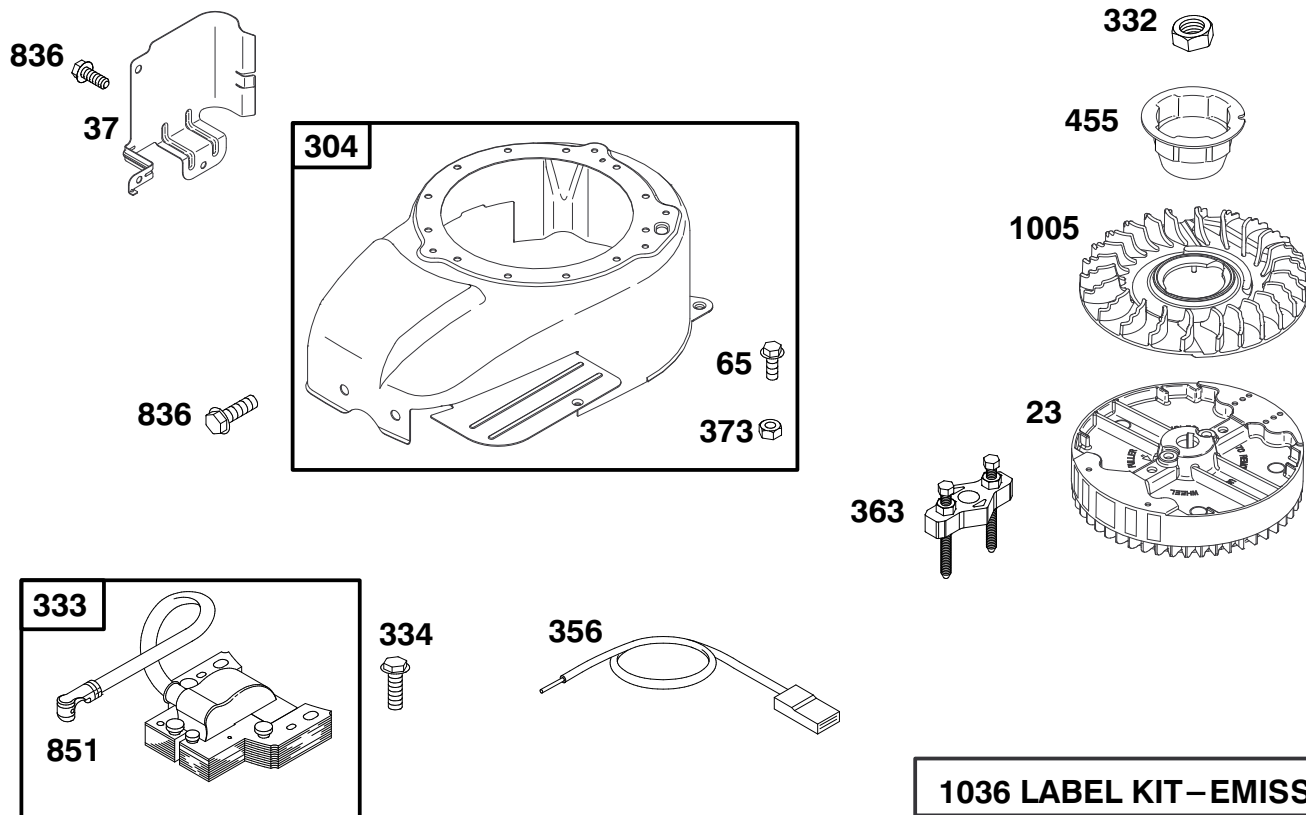
ENGINE GTS-200

Ref. No.	Part No.	Description	No. Used
182	98-9205	Bracket - Tank Mounting	1
188A	98-9202	Screw - Hex.	1
300	99-0995	Muffler - Exhaust	1
305A	98-9204	Screw - Hex.	1
305B	99-0998	Screw - Hex.	1
346	99-1047	Screw - Hex.	1

Ref. No.	Part No.	Description	No. Used
346A	99-0999	Screw - Hex.	1
832	98-9206	Guard - Muffler	1
836	99-0941	Screw - Hex.	1
†★883	99-0947	Gasket - Exhaust	1
930	98-9203	Guard - Rewind	1

★ Included in Gasket Set - Part No. 99-0902

† Included in Valve Overhaul Gasket Set - Part No. 99-0904

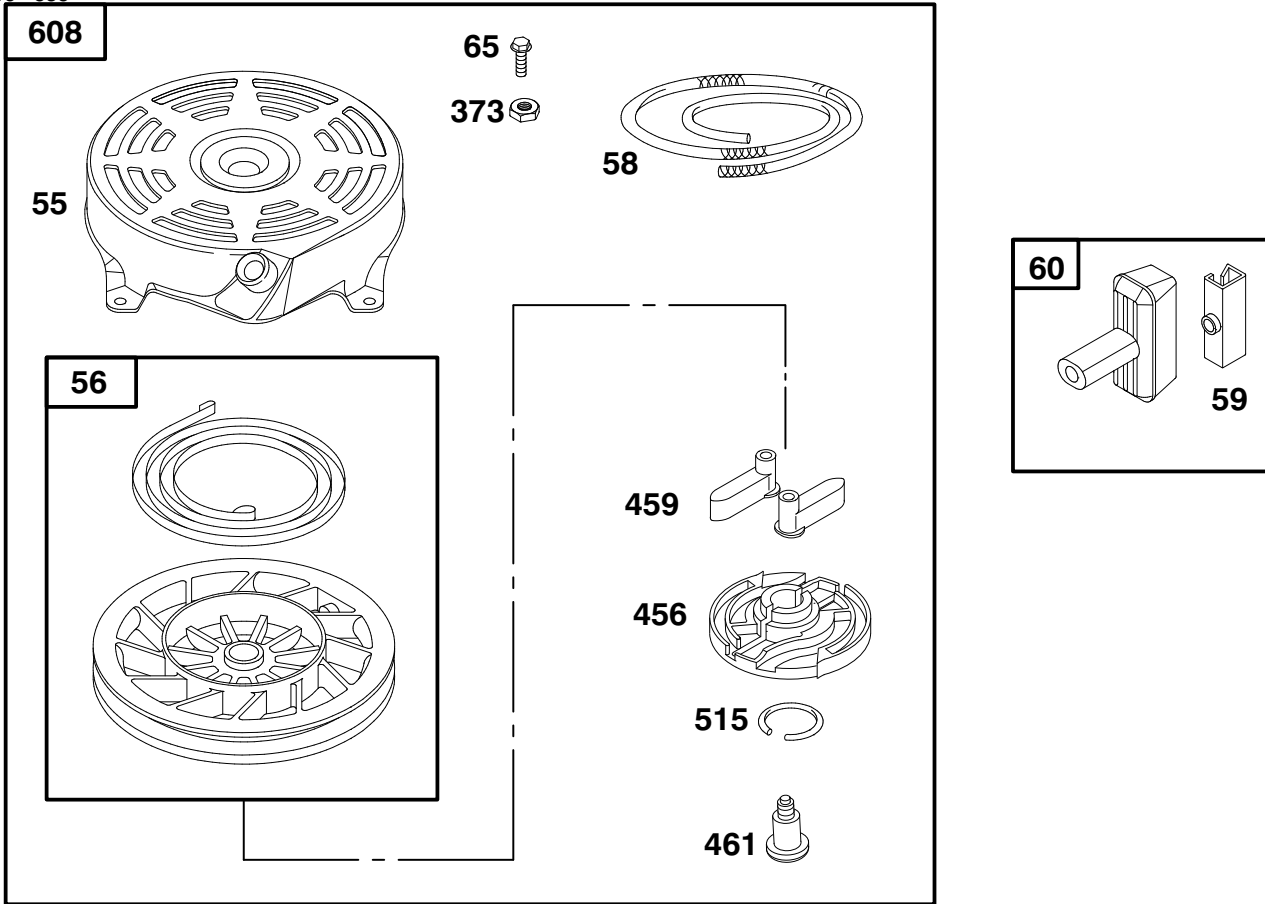


Assemblies include all parts shown in frames.

ENGINE GTS-200

Ref. No.	Part No.	Description	No. Used
23	99-1001	Flywheel	1
37	99-1013	Guard - Flywheel	1
65	99-1002	Screw - Hex.	1
304	99-1003	Housing - Blower	1
332	99-1004	Nut - Flywheel	1
333	99-1005	Armature - Magneto	1
334	99-1006	Screw - Hex.	1
356	99-1007	Wire - Stop	1

Ref. No.	Part No.	Description	No. Used
363	99-1008	Puller - Flywheel	1
373	99-1009	Nut - Hex.	1
455	99-1010	Cup - Flywheel	1
836	99-0941	Screw - Hex.	1
851	77-9450	Terminal - Cable	1
1005	99-1015	Fan - Flywheel	1
1036	99-1016	Label Kit - Emission	1

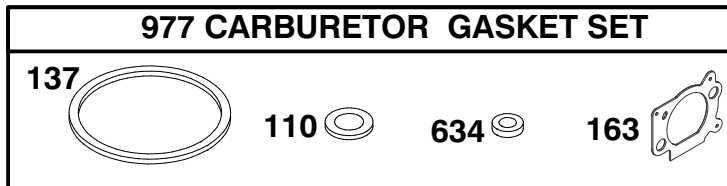
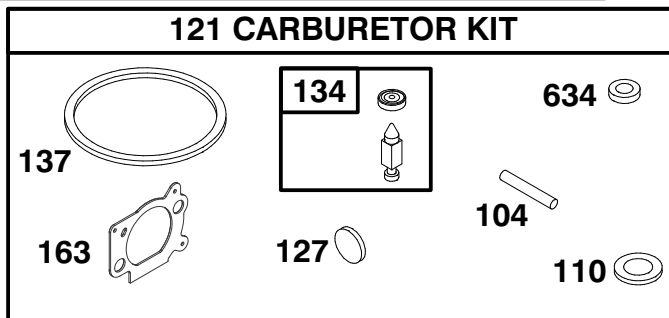
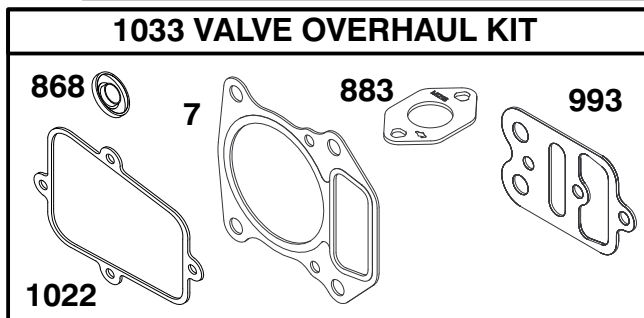
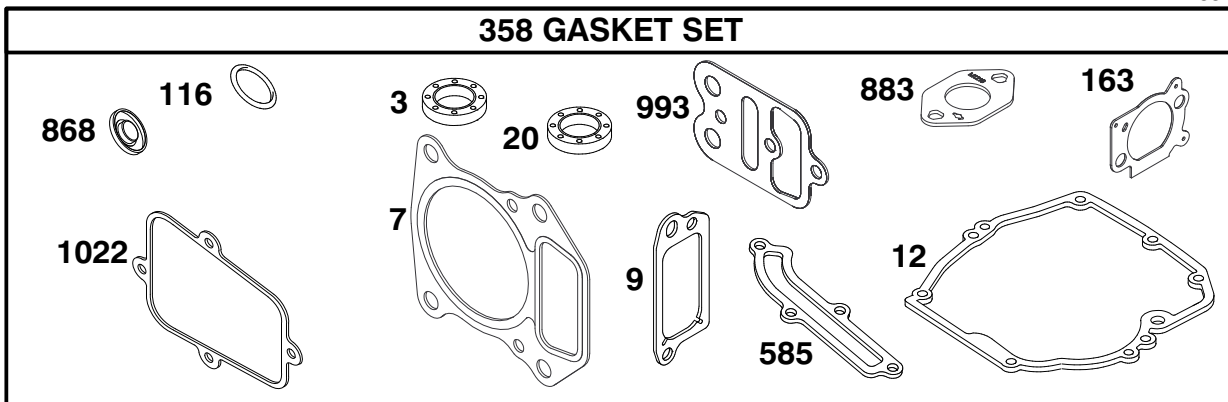


Assemblies include all parts shown in frames.

ENGINE GTS-200

Ref. No.	Part No.	Description	No. Used
55	99-1048	Housing - Rewind Starter	1
56	94-1657	Pulley - Starter	1
58	94-1668	Rope - Starter	1
59	77-7210	Insert - Starter Grip	1
60	77-8520	Grip - Starter Rope	1
65	99-1002	Screw - Hex.	1

Ref. No.	Part No.	Description	No. Used
373	99-1009	Nut - Hex.	1
456	94-1659	Retainer - Spring	1
459	94-1654	Pawl - Ratchet	1
461	94-1600	Screw - Shoulder	1
515	94-1655	Spring - Friction	1
608	98-9215	Starter - Rewind	1



Assemblies include all parts shown in frames.

ENGINE GTS-200

Ref. No.	Part No.	Description	No. Used
★3	99-0912	Seal - Oil	1
†★7	99-0930	Gasket - Cylinder Head	1
†★9	99-0913	Gasket - Breather	1
★12	99-0953	Gasket - Crankcase	1
★20	99-0955	Seal - Oil	1
●104	99-0970	Pin - Float Hinge	1
●◆110		Washer - Bowl (Sold in Kit Only).	1
★116	99-0916	Seal - O Ring	1
121	99-0901	Carburetor Kit	1
●127		Plug - Welch (Sold in Kit Only).	1
●134	77-8110	Valve - Needle	1
●◆137		Gasket - Bowl (Sold in Kit Only).	1

Ref. No.	Part No.	Description	No. Used
●◆★163	99-0976	Gasket - Air Cleaner	1
358	99-0902	Gasket Set	1
★585	99-0923	Gasket - Breather	1
●◆634		Washer - Foam (Sold in Kit Only).	1
†★868	99-0946	Seal - Valve	1
†★883	99-0947	Gasket - Exhaust	1
977	99-0903	Gasket Set - Carburetor	1
†★993	99-0948	Gasket - Plate	1
†★1022	99-0907	Gasket - Rocker Cover	1
1033	99-0904	Gasket Set - Valve Overhaul	1

★ Included in Gasket Set - Part No. 99-0902

† Included in Valve Overhaul Gasket Set - Part No. 99-0904

◆ Included in Carburetor Gasket Set - Part No. 99-0903

● Included in Carburetor Kit - Part No. 99-0901

Toro Part Number Index

Part No.	Page No.	Ref. No.	Qty.	Description
612066	6	13	2	Key-Pinion
3-3287	5	8	2	Spacer
3-7501	5	5	4	Washer-Curved
13-5149	7	9	1	Shaft-Input
13-9739	7	10	1	Upper Case Assembly
25-7740	1	12	2	Knob-Arm
25-7740	6	18	2	Knob-Arm
26-0670	3	10	1	Bolt-Blade
27-6232	1	9	2	Bolt-Wheel HH
27-6300	3	8	1	Key-Square
27-7210	5	7	2	Screw-Shoulder
29-9271	7	27	1	Gear-42t
29-9330	7	30	2	Key-Shift
29-9340	7	32	1	Collar-Shift
29-9570	7	39	1	Bushing-Yoke
29-9690	7	24	1	Washer-Flat
33-3208	1	18	1	Rod-Shield
33-4820	8	1	1	Hinge-Door
36-4770	7	26	3	Spacer-Gear
36-4780	7	33	3	Washer-Flat
36-4792	7	12	4	Washer-Thrust
36-6910	8	4	2	Spring
36-8070	6	1	1	"v" Belt
37-7260	1	22	2	Screw-TAP
39-5770	1	1:6	1	Decal-Danger
39-6650	7	64	1	Gear-18t
39-6720	7	31	1	Sleeve
39-6740	7	15	1	Pulley
39-7842	7	68	1	Key-Square
39-9160	6	7	2	Pinion
39-9650	6	12	2	Spring
40-1940	1	3	4	Washer
42-4020	8	5	1	Frame-Bag
42-4030	8	2	1	Frame-Bag
42-4740	7	28	1	Gear-38t
44-0580	1	17	1	Shield-Trailing
46-3540	7	66	1	Gear-12t
46-3550	7	65	1	Gear-14t
46-3560	7	25	1	Gear-52t
46-6810	1	39	1	Screw HWH
46-6811	1	31	1	Screw-HWH
46-6980	5	31	1	Support-Cable
46-7030	5	35	1	Retainer-Cable
46-7910	3	18	1	Pulley-Driver
46-8081	5	3	1	Guide-Rope
46-8090	1	28	2	Screw-Tapping
46-8091	4	8	2	Screw-Tapping
47-2910	7	72	1	Washer-Thrust
47-6730	7	21	2	Seal
47-6730	6	16:5	2	Seal-Oil
47-7260	7	10:2	1	Seal
47-7270	7	10:1	2	Bearing-Needle
48-2060	6	16:3	2	Bearing-Needle
48-2060	7	3	2	Bearing-Needle
48-2170	6	4	2	Cap-End
48-2810	5	33	1	Rod-Support
48-2840	8	7	1	Door-Bag
49-1630	5	22	2	Spacer-Support
49-2040	2	42	8	Screw-HH
49-2040	7	37	6	Screw-Self Tapping
49-7700	6	15	2	Washer-Thrust
49-8461	7	18	1	Bracket-Guide Belt

*Not Illustrated

Toro Part Number Index (cont.)

Part No.	Page No.	Ref. No.	Qty.	Description
49-8740	1	19	1	Quadrant-Rear
49-8750	1	24	1	Quadrant-Rear
49-8760	1	13	1	Quadrant-Front
49-8770	2	43	1	Quadrant-Front
51-3210	4	3	2	Fuel Line
52-2450	9	2:3	4	Bearing-Wheel
52-2170	3	14	1	Wa-Retainer
52-2190	3	9	1	Spacer-Retainer
52-2410	1	10:4	2	Hub-Bearing Support
52-2410	9	2:2	2	Hub-Bearing Support
52-2440	1	10:6	2	Spacer-Bearing
52-2440	9	2:4	2	Spacer-Bearing
52-2450	1	10:5	4	Ball Bearing
52-2450	6	16:2	2	Ball Bearing
52-2480	1	8	2	Spacer
52-2620	1	35	1	Label-Grease
53-7720	1	10	2	ASM-Wheel & Tire
53-7740	1	10:1	2	Tire-8.00
53-7740	9	1	2	Tire-8.00
53-7780	1	10:3	4	Plate-Wheel Half
53-7780	9	2:1	2	Plate-Wheel Half
53-7950	7	67	1	Shaft-Intermediate
55-3570	4	2	1	Cap-Fuel
55-8010	7	34	1	Sleeve-Gear
55-8020	7	29	1	Retainer-Key
60-8870	7	23	1	Yoke-Shift
61-8270	5	29	1	Bar-Control
61-8300	1	7	2	ASM-Arm
62-3830	6	6	2	Washer-Thrust
65-5860	3	17	1	ASM-Protector
66-5350	5	24	1	Lever-Control
66-7560	1	5	2	ASM-Arm
66-7561	6	17	2	ASM-Arm
71-1280	1	1:7	1	Decal-Warning
71-9280	4	4	1	Filter-Fuel
71-9350	1	34	1	Spring-Bracket
74-1640	6	8	2	Cover-Wheel
74-1650	6	11	2	Spacer-Cover
74-1720	6	9	2	ASM-Wheel & Tire
74-1741	5	12	1	Bracket-Adjust
74-1750	7	17	1	Bracket-Traction Engage
74-1760	7	63	1	Gear-Bevel
74-1791	5	36	1	Cable-Traction
74-1810	6	3	2	Washer-Thrust
74-1851	6	16	2	ASM-Arm
74-1860	1	20	1	ASM-Gearcase
74-1861	7	*	1	Gear Case Assembly Complete
74-1890	7	8	1	Shaft-Output
74-1920	7	40	1	Case-Lower
74-1960	6	19	1	Lever-Shift
74-1970	5	38	1	Decal-Drive
76-4640	1	27:2	1	Latch Discharge Plug
76-4650	1	27:4	1	Grip Latch
76-4660	1	33	1	Spring-Extension
77-0500	1	27	1	ASM-Plug
77-5270	5	28	1	Lever-Control
80-3770	1	32	1	Retainer-Door
82-9152	1	36	1	Chute-Discharge
84-4960	3	6	1	Decal-Proline
84-8361	5	16	1	Latch-Handle
84-8401	5	34	1	Latch-Handle
84-9170	4	5	1	Wa-Base

*Not Illustrated

Toro Part Number Index (cont.)

Part No.	Page No.	Ref. No.	Qty.	Description
91-2256	3	13	1	Blade-Generation II
92-1599	3	12	1	Stiffener-Blade
92-1720	1	1:3	1	Kicker-RH
92-1730	1	1:4	1	Kicker-LH
92-1750	1	1:2	1	Plate-Kicker Rear
92-4957	9	2:7	2	ASM-Wheel Half & Gear
92-6316	6	16:7	2	Fitting-Grease
92-7988	2	46	1	Decal-Recycler
93-3154	1	29	1	Plate-Latch
93-3166	4	1	1	Tank-Gas
93-3661	5	30	1	Cable-Brake
93-7351	1	30	1	ASM-Door
93-8470	3	3	1	Screw-Clamp
98-2000	5	1	1	Handle
98-2001	5	21	1	Bracket-Throttle Control
98-2002	3	5	1	Decal-Engine
98-2047	5	37	1	Cable-Throttle
98-3214	1	21	1	Cover-Belt
98-7116	5	27	1	Decal-Control
98-7139	1	1	1	Housing-Commercial(Mach)
98-9220	8	0	1	Grass Bag-Proline
98-9222	8	6	1	Bag-Grass
98-9227	2	47	1	Guard-Primer
2210-249	3	4	1	Clamp-Casing
2210-316	3	2	1	Rope-Stop
2412-95	4	6	4	Clamp
252-103	7	69	2	Bearing-Closed
256-276	5	23	2	Spacer-Nylon
257-3	1	6	2	Washer-Thrust
302-63	7	9:1	1	Fitting-Grease
321-2	1	10:7	8	Screw-HH
321-2	9	2:5	8	Screw-HH
321-4	5	2	2	Screw-HH
321-7	1	26	2	Screw-Cap
321-9	5	4	1	Screw-HH
321-13	5	19	2	Screw-HH
321-15	5	6	1	Screw-HH
322-6	5	13	2	Screw-HH
322-7	5	15	2	Screw-HH
322-11	5	20	2	Screw-HH
323-6	4	7	2	Screw-HH
323-12	1	11	2	Screw
323-13	6	10	2	Screw-HH
3253-22	3	11	1	Washer-Lock
3254-6	3	16	3	Washer-Lock Int
3256-22	1	25	2	Washer-Flat
3256-22	5	32	1	Washer-Flat
3256-45	7	75	1	Washer-Flat
3257-1	7	74	2	Key-Woodruff
3285-19	7	35	1	Pin-Groove
3290-378	5	17	3	Tie-Cable
3290-422	8	3	2	Nut-Push
3290-456	5	14	4	Washer-Lock
3295-35	1	27:3	1	Rivet Solid
3296-5	7	16	1	Nut-Lock
3296-6	1	2	2	Nut-Lock
3296-29	5	10	4	Nut-Lock
3296-42	1	10:8	8	Nut-Lock
3296-42	1	23	2	Nut-Lock
3296-42	5	25	4	Nut-Lock
3296-42	9	2:6	8	Nut-Lock
3296-47	5	9	2	Nut-Lock

*Not Illustrated

Toro Part Number Index (cont.)

Part No.	Page No.	Ref. No.	Qty.	Description
3296-58	5	26	2	Nut-Flange
32111-7	5	18	2	Nut-Cap
32121-99	6	20	1	Pin-Roll
32144-70	3	15	3	Screw-TAP
32144-70	5	11	1	Screw-TAP
32144-102	3	7	3	Screw
32144-111	1	1:5	6	Screw - PPH
32151-36	6	2	2	Ring-Retaining Ext
32151-57	7	70		Ring-Retaining
32151-68	6	14	4	Ring-Klip
32151-86	5	39	2	Ring-E
32152-2	1	4	2	Nut-Lock HH
32152-2	6	5	2	Nut-Lock HH

